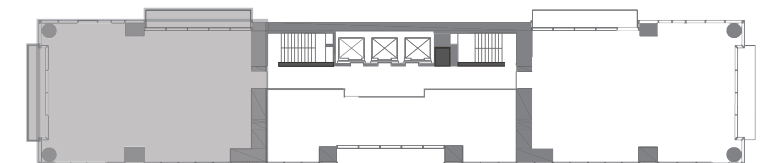


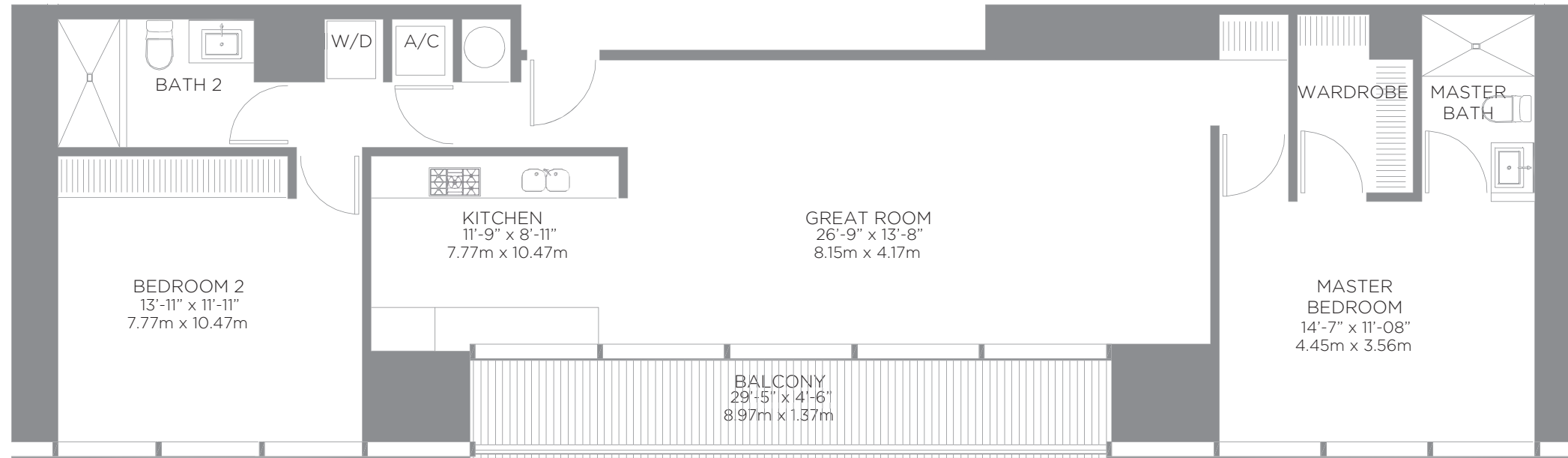
Typical Area	2,271 Sq. Ft.	210.90 m2
Terrace A:	144 Sq. Ft.	13.40 m2
Terrace B:	125 Sq. Ft.	12.60 m2
Total Area:	2,540 Sq. Ft.	236.90 m2

Floor Plan C



This floor plan represents the typical floor plan for the residence type indicated above and contains some unique design features, including uncommonly wide demising and exterior walls, which result in significant discrepancies between the two forms of measurements described below. The above stated square footages and dimensions are based on measurements to the exterior boundaries of the exterior walls and the centerline of atypically wide interior demising walls between units and inordinately vary from the square footages and dimensions that would be determined by using the description and definition of the "Unit" set forth in the Declaration (which generally only includes the interior airspace between the perimeter walls and excludes interior structural components and other common elements). This method used herein is provided to allow a prospective buyer to compare the Units with units in other condominium projects. The area of the Unit, as determined in accordance with the defined unit boundaries set forth in the Declaration, is + or - 2,148 sq. ft. for units types A and C, and + or - 1,108 sq. ft. for unit B. Note that measurements of rooms set forth on this floor plan are generally taken at the greatest points of each given room (as if the room were a perfect rectangle), without regard for any cutouts, soffits or other variations. Accordingly, the area of the actual room will be smaller than the product obtained by multiplying the stated length times width. All stated square footages, dimensions, specifications and other measurements reflected herein are based on preliminary pre-construction plans, which are subject to change and will not necessarily accurately reflect the final plans and specifications for the development.



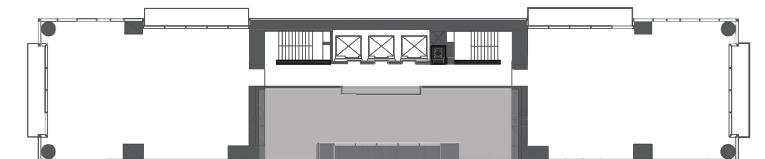


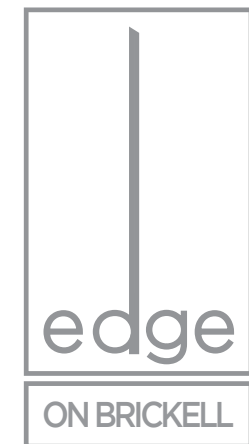
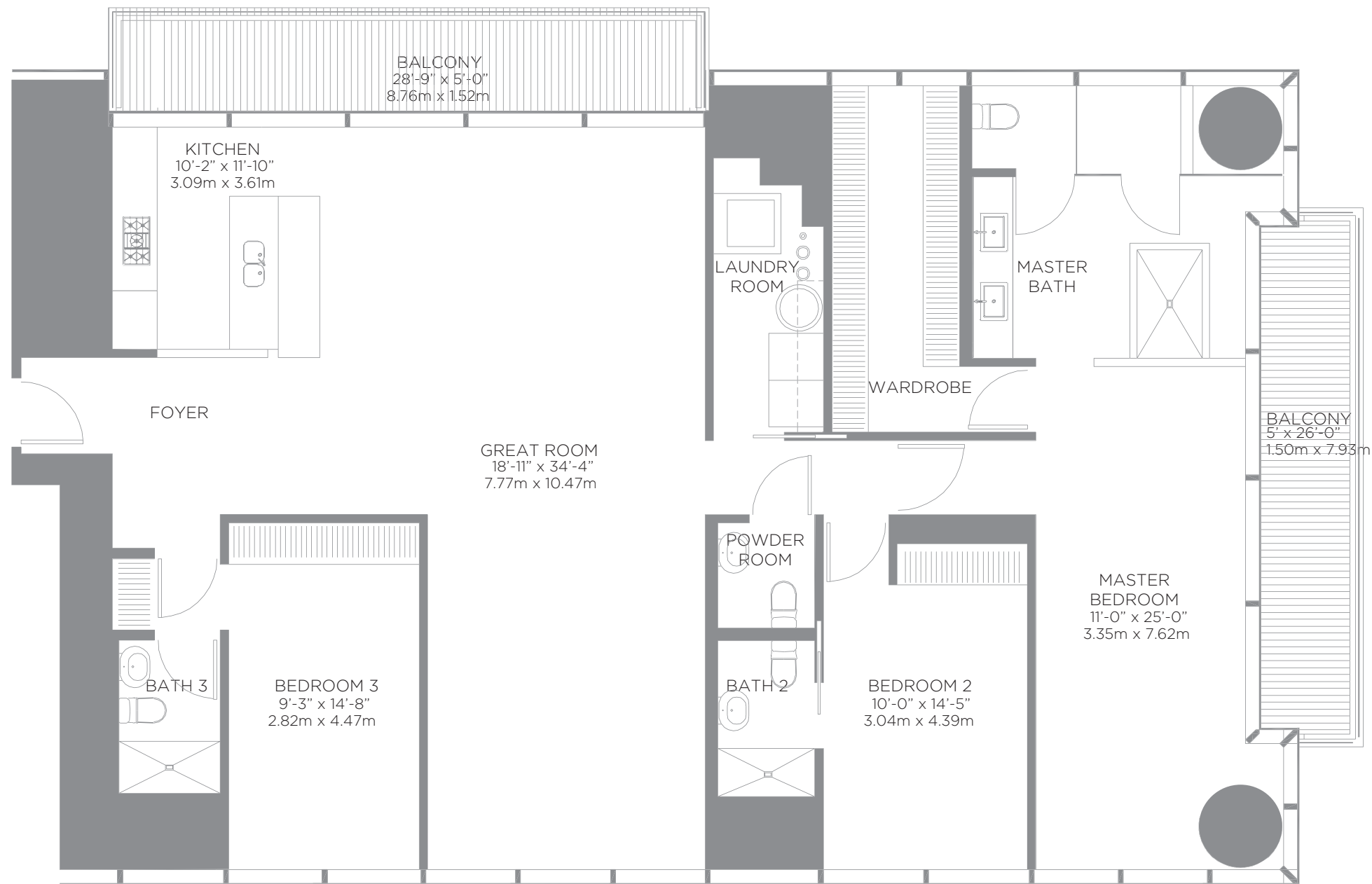
Floor Plan B

Typical Area	1,321 Sq. Ft.	122.72 m2
Terrace A:	137 Sq. Ft.	13.40 m2
Total Area:	1,458 Sq. Ft.	136.12 m2



This floor plan represents the typical floor plan for the residence type indicated above and contains some unique design features, including uncommonly wide demising and exterior walls, which result in significant discrepancies between the two forms of measurements described below. The above stated square footages and dimensions are based on measurements to the exterior boundaries of the exterior walls and the centerline of atypically wide interior demising walls between units and inordinately vary from the square footages and dimensions that would be determined by using the description and definition of the "Unit" set forth in the Declaration (which generally only includes the interior airspace between the perimeter walls and excludes interior structural components and other common elements). This method used herein is provided to allow a prospective buyer to compare the Units with units in other condominium projects. The area of the Unit, as determined in accordance with the defined unit boundaries set forth in the Declaration, is + or - 2,148 sq. ft. for units types A and C, and + or - 1,108 sq. ft for unit B. Note that measurements of rooms set forth on this floor plan are generally taken at the greatest points of each given room (as if the room were a perfect rectangle), without regard for any cutouts, soffits or other variations. Accordingly, the area of the actual room will be smaller than the product obtained by multiplying the stated length times width. All stated square footages, dimensions, specifications and other measurements reflected herein are based on preliminary pre-construction plans, which are subject to change and will not necessarily accurately reflect the final plans and specifications for the development.





Typical Area	2,271 Sq. Ft.	210.90 m ²
Terrace A:	144 Sq. Ft.	13.40 m ²
Terrace B:	125 Sq. Ft.	12.60 m ²
Total Area:	2,540 Sq. Ft.	236.90 m²

Floor Plan C



This floor plan represents the typical floor plan for the residence type indicated above and contains some unique design features, including uncommonly wide demising and exterior walls, which result in significant discrepancies between the two forms of measurements described below. The above stated square footages and dimensions are based on measurements to the exterior boundaries of the exterior walls and the centerline of atypically wide interior demising walls between units and inordinately vary from the square footages and dimensions that would be determined by using the description and definition of the "Unit" set forth in the Declaration (which generally only includes the interior airspace between the perimeter walls and excludes interior structural components and other common elements). This method used herein is provided to allow a prospective buyer to compare the Units with units in other condominium projects. The area of the Unit, as determined in accordance with the defined unit boundaries set forth in the Declaration, is + or - 2,148 sq. ft. for units types A and C, and + or - 1,108 sq. ft. for unit B. Note that measurements of rooms set forth on this floor plan are generally taken at the greatest points of each given room (as if the room were a perfect rectangle), without regard for any cutouts, soffits or other variations. Accordingly, the area of the actual room will be smaller than the product obtained by multiplying the stated length times width. All stated square footages, dimensions, specifications and other measurements reflected herein are based on preliminary pre-construction plans, which are subject to change and will not necessarily accurately reflect the final plans and specifications for the development.

