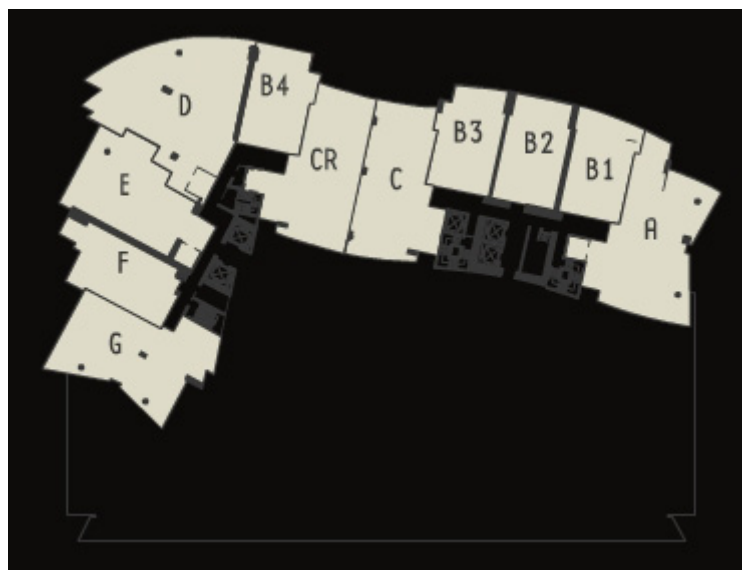


FLAT



TOWER



PENTHOUSE



TOWNHOUSE

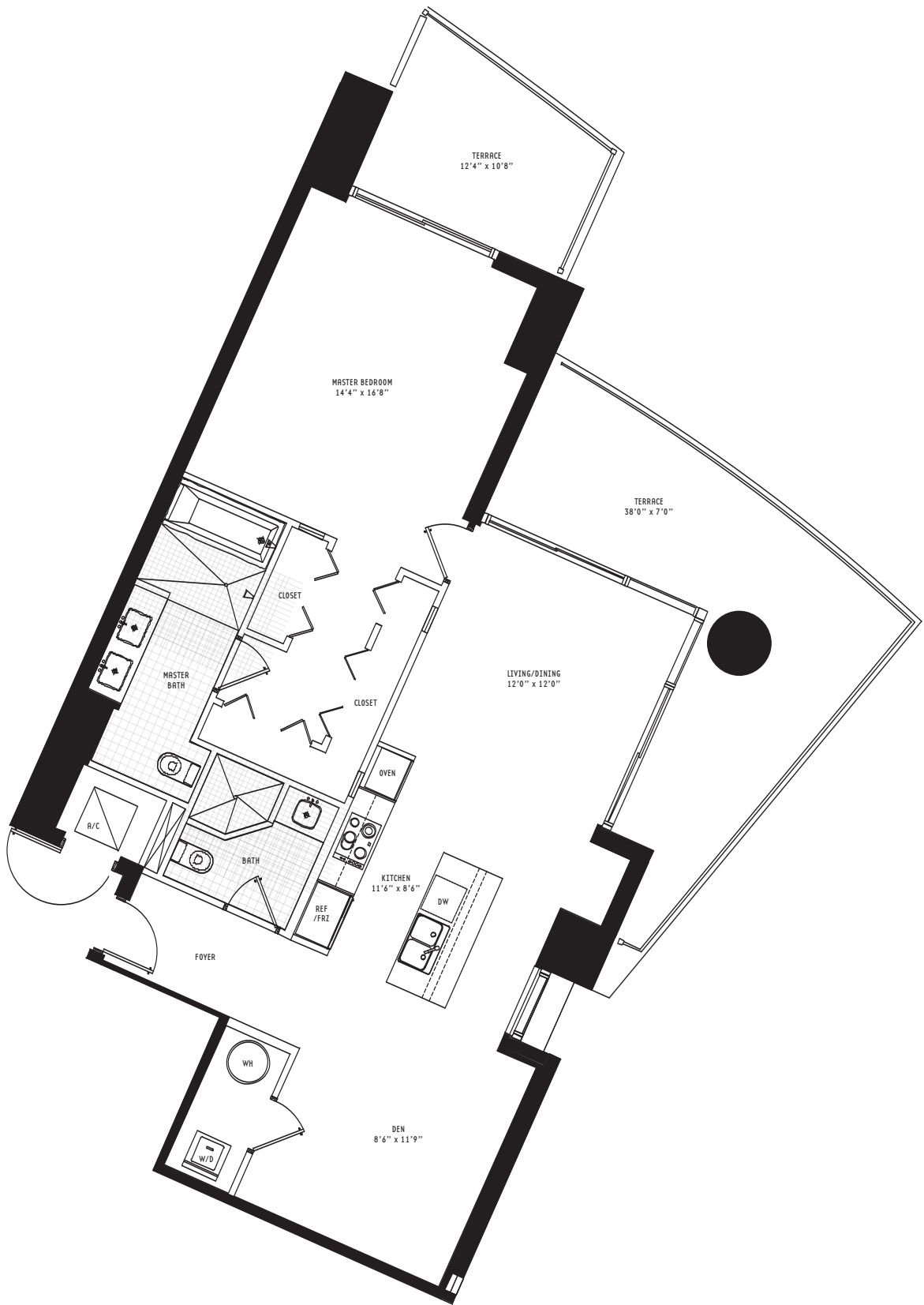


FLAT A 1 Bedroom + • 1.5 Bath

All dimensions are approximate and all floor plans and development plans are subject to change by the developer without notice. Stated dimensions are measured to the exterior boundaries of the exterior walls and the centerline of interior demising walls and in fact vary from the dimensions that would be determined by using the description and definition of the "Unit" set forth in the Declaration (which generally only includes the interior airspace between the perimeter walls and excludes interior structural components).

Interior	1,186 sq ft	110.2 m ²
Terrace	382 sq ft	35.5 m ²
Total area	1,568 sq ft	145.7 m ²

305.530.0200 900BiscayneBay.com BISCAYNE  BAY



FLAT B1 1 Bedroom • 2 Bath

All dimensions are approximate and all floor plans and development plans are subject to change by the developer without notice. Stated dimensions are measured to the exterior boundaries of the exterior walls and the centerline of interior demising walls and in fact vary from the dimensions that would be determined by using the description and definition of the "Unit" set forth in the Declaration (which generally only includes the interior airspace between the perimeter walls and excludes interior structural components).

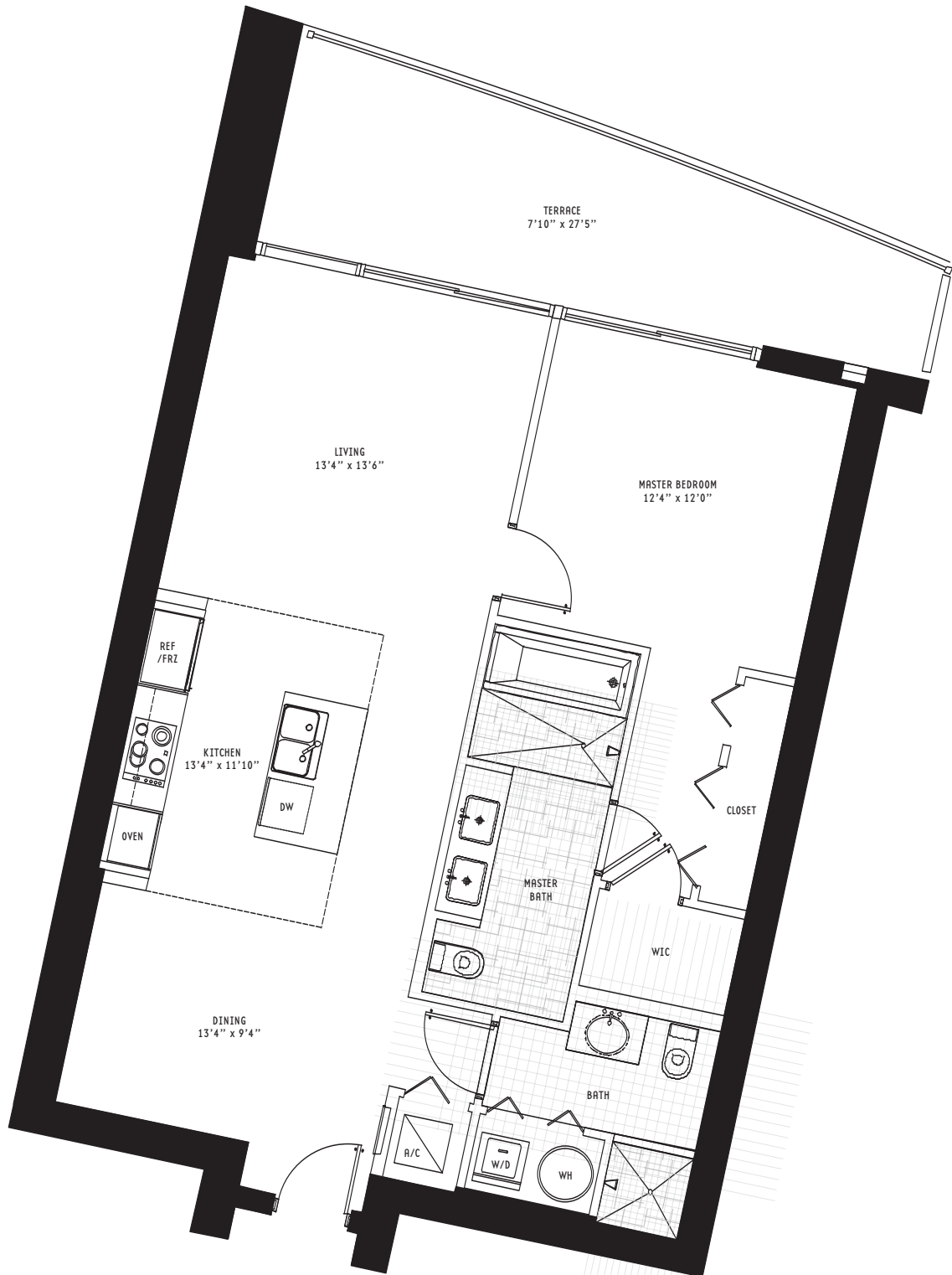
Interior	998 sq ft	92.7 m ²
Terrace	221 sq ft	20.5 m ²
Total area	1,219 sq ft	113.2 m ²

305.530.0200 900BiscayneBay.com

BISCAYNE



BAY



facci^învestments

FLAT B2 1 Bedroom • 2 Bath

All dimensions are approximate and all floor plans and development plans are subject to change by the developer without notice. Stated dimensions are measured to the exterior boundaries of the exterior walls and the centerline of interior demising walls and in fact vary from the dimensions that would be determined by using the description and definition of the "Unit" set forth in the Declaration (which generally only includes the interior airspace between the perimeter walls and excludes interior structural components).

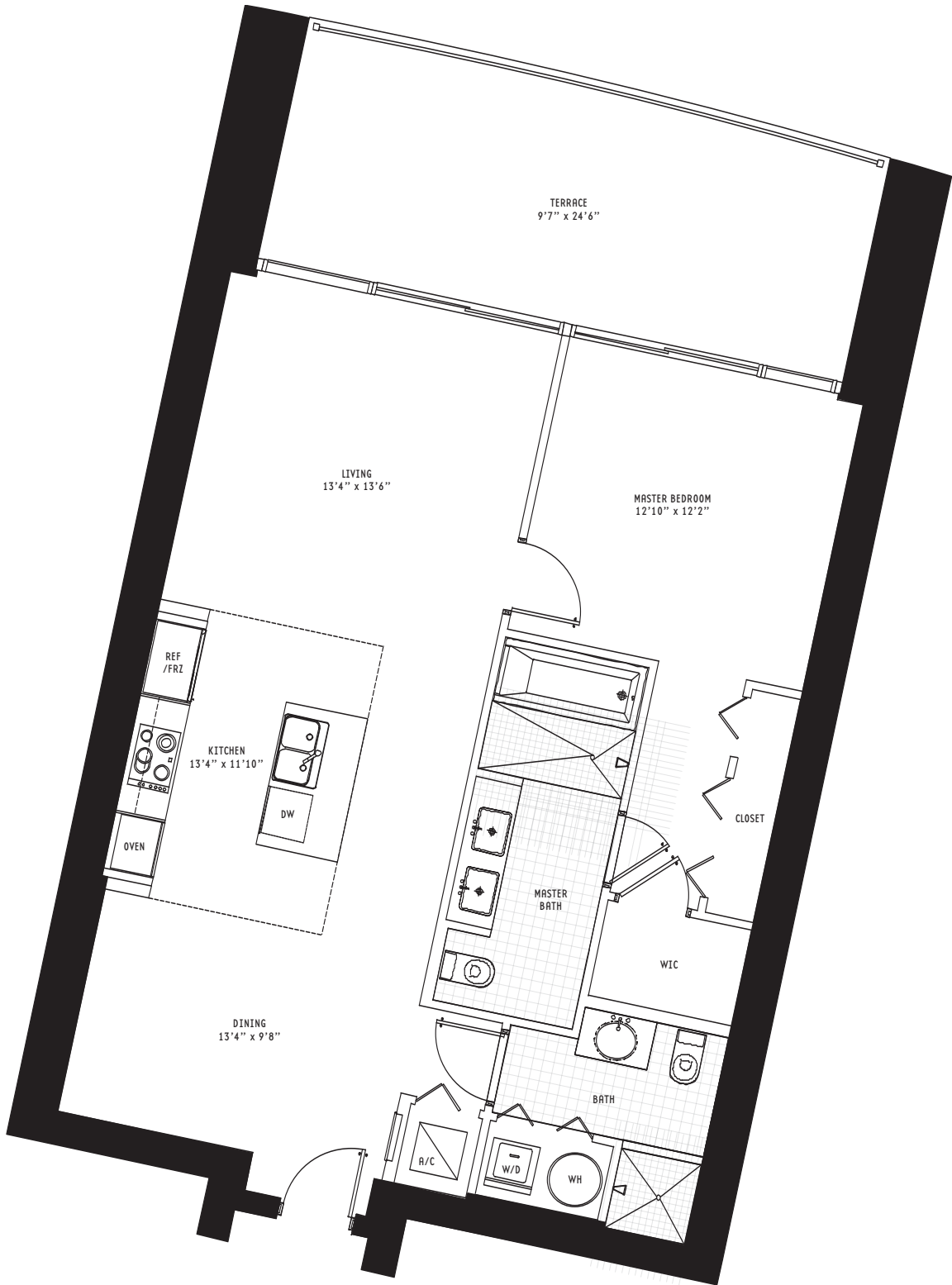
Interior	1,015 sq ft	94.3 m ²
Terrace	242 sq ft	22.5 m ²
Total area	1,257 sq ft	116.8 m ²

305.530.0200 900BiscayneBay.com

BISCAYNE



BAY



facci^învestments

FLAT B3 1 Bedroom • 1.5 Bath

All dimensions are approximate and all floor plans and development plans are subject to change by the developer without notice. Stated dimensions are measured to the exterior boundaries of the exterior walls and the centerline of interior demising walls and in fact vary from the dimensions that would be determined by using the description and definition of the "Unit" set forth in the Declaration (which generally only includes the interior airspace between the perimeter walls and excludes interior structural components).

Interior	1,015 sq ft	94.3 m ²
Terrace	209 sq ft	19.4 m ²
Total area	1,224 sq ft	113.7 m ²

305.530.0200 900BiscayneBay.com

BISCAYNE



BAY



facci^învestments

UNIT A 2 Bedroom + Den • 3.5 Bath

All dimensions are approximate and all floor plans and development plans are subject to change by the developer without notice. Stated dimensions are measured to the exterior boundaries of the exterior walls and the centerline of interior demising walls and in fact vary from the dimensions that would be determined by using the description and definition of the "Unit" set forth in the Declaration (which generally only includes the interior airspace between the perimeter walls and excludes interior structural components).

Interior	1,796 sq ft	166.8 m ²
Terrace	802 sq ft	74.6 m ²
Total area	2,598 sq ft	241.4 m ²

305.530.0200 900BiscayneBay.com

BISCAYNE

900

BAY



facci^învestments

UNIT B1 1 Bedroom + Den • 2 Bath

All dimensions are approximate and all floor plans and development plans are subject to change by the developer without notice. Stated dimensions are measured to the exterior boundaries of the exterior walls and the centerline of interior demising walls and in fact vary from the dimensions that would be determined by using the description and definition of the "Unit" set forth in the Declaration (which generally only includes the interior airspace between the perimeter walls and excludes interior structural components).

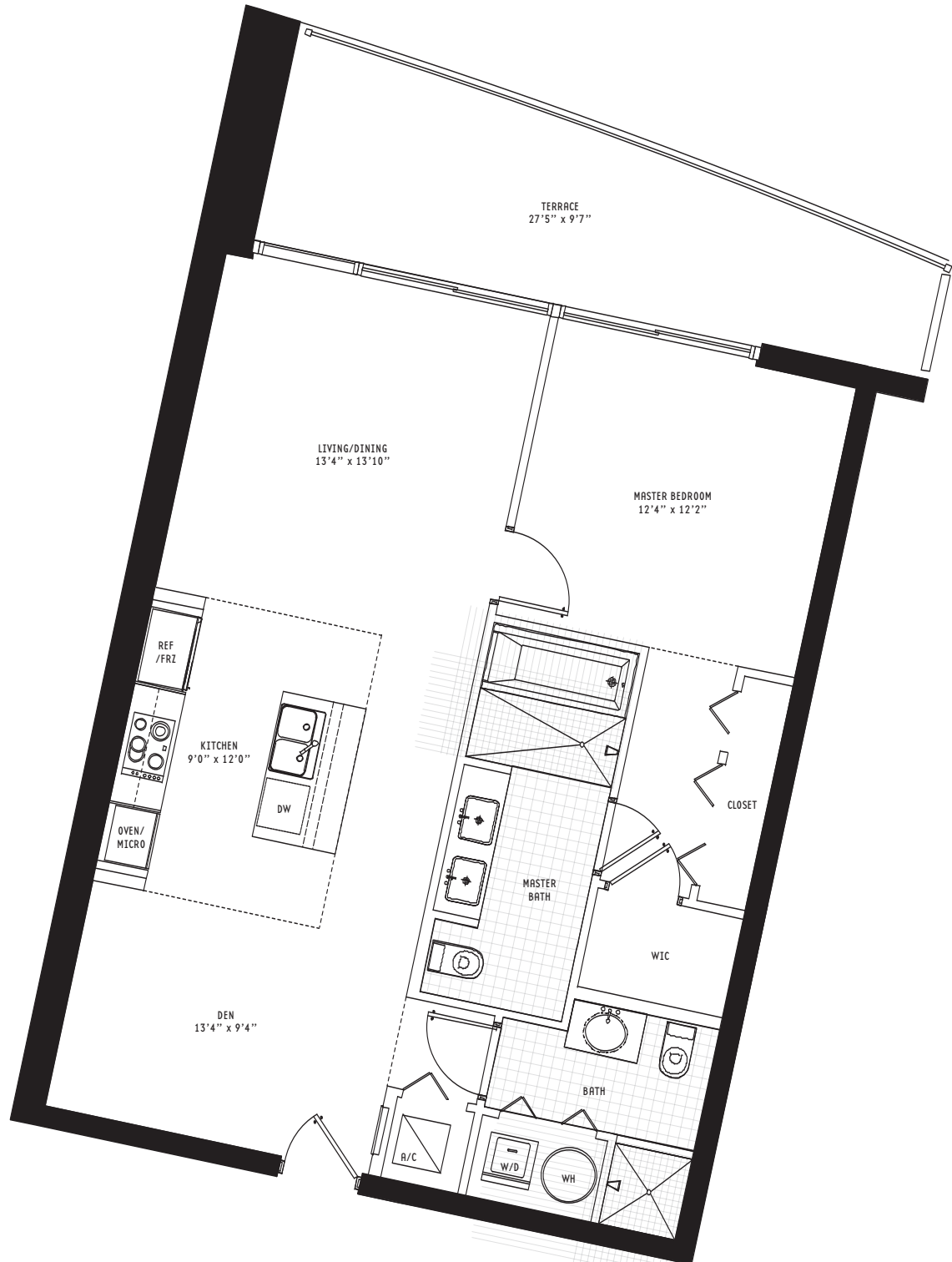
Interior	1,006 sq ft	93.4 m ²
Terrace	200 sq ft	18.6 m ²
Total area	1,206 sq ft	112.0 m ²

305.530.0200 900BiscayneBay.com

BISCAYNE



BAY



facci^învestments

UNIT B2 1 Bedroom + Den • 2 Bath

All dimensions are approximate and all floor plans and development plans are subject to change by the developer without notice. Stated dimensions are measured to the exterior boundaries of the exterior walls and the centerline of interior demising walls and in fact vary from the dimensions that would be determined by using the description and definition of the "Unit" set forth in the Declaration (which generally only includes the interior airspace between the perimeter walls and excludes interior structural components).

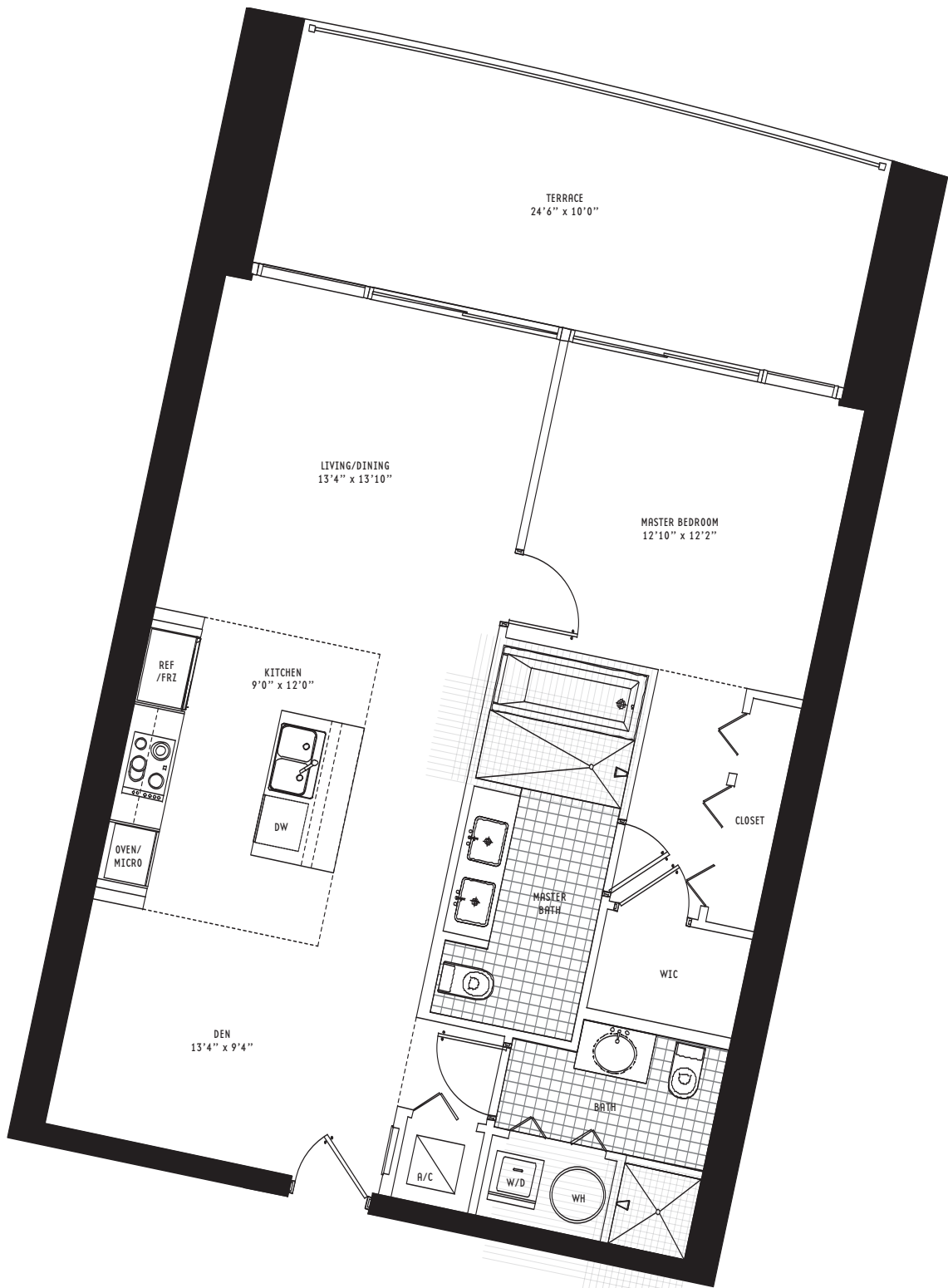
Interior	1,023 sq ft	95.0 m ²
Terrace	243 sq ft	22.6 m ²
Total area	1,266 sq ft	117.6 m ²

305.530.0200 900BiscayneBay.com

BISCAYNE



BAY



facci^învestments

UNIT B3 1 Bedroom + Den • 2 Bath

All dimensions are approximate and all floor plans and development plans are subject to change by the developer without notice. Stated dimensions are measured to the exterior boundaries of the exterior walls and the centerline of interior demising walls and in fact vary from the dimensions that would be determined by using the description and definition of the "Unit" set forth in the Declaration (which generally only includes the interior airspace between the perimeter walls and excludes interior structural components).

Interior	1,042 sq ft	96.8 m ²
Terrace	209 sq ft	19.4 m ²
Total area	1,251 sq ft	116.2 m ²

305.530.0200 900BiscayneBay.com

BISCAYNE



BAY



facci^învestments

UNIT B4 1 Bedroom + Den • 2 Bath

All dimensions are approximate and all floor plans and development plans are subject to change by the developer without notice. Stated dimensions are measured to the exterior boundaries of the exterior walls and the centerline of interior demising walls and in fact vary from the dimensions that would be determined by using the description and definition of the "Unit" set forth in the Declaration (which generally only includes the interior airspace between the perimeter walls and excludes interior structural components).

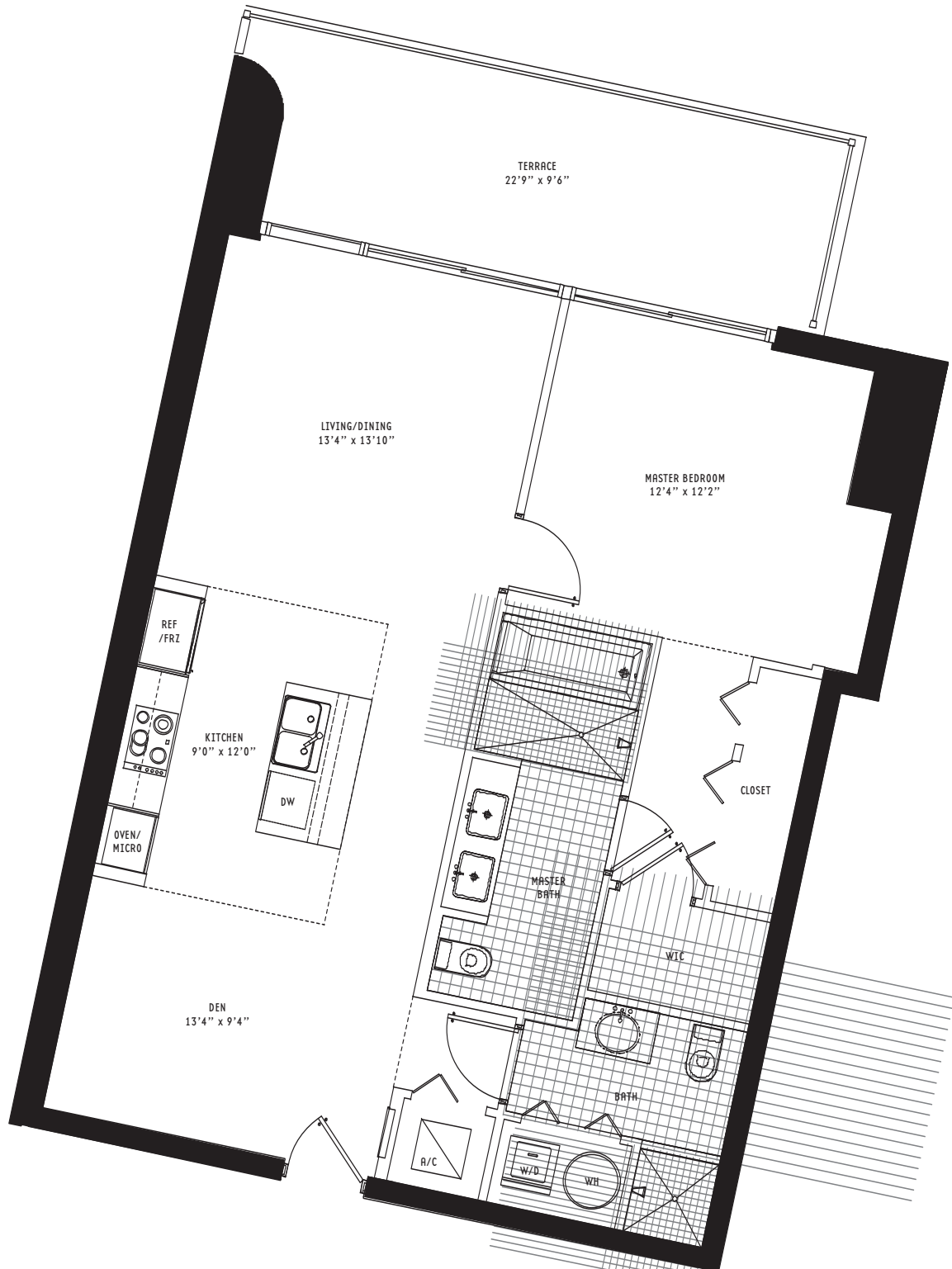
Interior	1,042 sq ft	96.8 m ²
Terrace	192 sq ft	17.9 m ²
Total area	1,234 sq ft	114.7 m ²

305.530.0200 900BiscayneBay.com

BISCAYNE



BAY



facci^învestments

UNIT C 2 Bedroom + Den • 3 Bath

All dimensions are approximate and all floor plans and development plans are subject to change by the developer without notice. Stated dimensions are measured to the exterior boundaries of the exterior walls and the centerline of interior demising walls and in fact vary from the dimensions that would be determined by using the description and definition of the "Unit" set forth in the Declaration (which generally only includes the interior airspace between the perimeter walls and excludes interior structural components).

Interior	1,712 sq ft	159.0 m ²
Terrace	445 sq ft	41.4 m ²
Total area	2,157 sq ft	200.4 m ²

305.530.0200 900BiscayneBay.com

BISCAYNE

900

BAY



facci^învestments

UNIT CR 2 Bedroom + Den • 3 Bath

All dimensions are approximate and all floor plans and development plans are subject to change by the developer without notice. Stated dimensions are measured to the exterior boundaries of the exterior walls and the centerline of interior demising walls and in fact vary from the dimensions that would be determined by using the description and definition of the "Unit" set forth in the Declaration (which generally only includes the interior airspace between the perimeter walls and excludes interior structural components).

Interior	1,712 sq ft	159.0 m ²
Terrace	445 sq ft	41.4 m ²
Total area	2,157 sq ft	200.4 m ²

305.530.0200 900BiscayneBay.com

BISCAYNE

900

BAY



facci^învestments

UNIT D 3 Bedroom + Den • 4 Bath

All dimensions are approximate and all floor plans and development plans are subject to change by the developer without notice. Stated dimensions are measured to the exterior boundaries of the exterior walls and the centerline of interior demising walls and in fact vary from the dimensions that would be determined by using the description and definition of the "Unit" set forth in the Declaration (which generally only includes the interior airspace between the perimeter walls and excludes interior structural components).

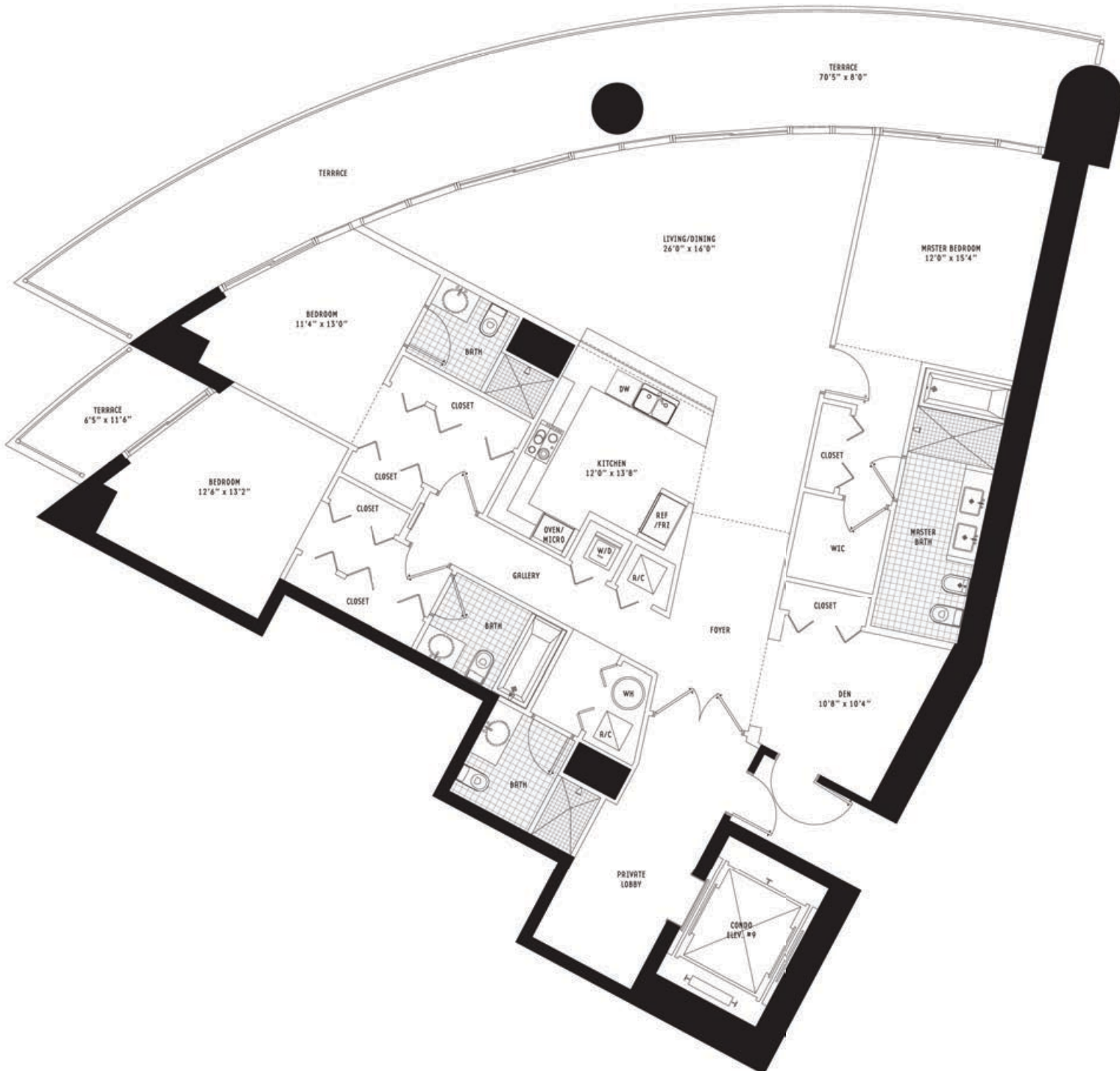
Interior	2,335 sq ft	216.9 m ²
Terrace	639 sq ft	59.4 m ²
Total area	2,974 sq ft	276.3 m ²

305.530.0200 900BiscayneBay.com

BISCAYNE

900

BAY



facci^în investments

UNIT E 2 Bedroom + Den • 3 Bath

All dimensions are approximate and all floor plans and development plans are subject to change by the developer without notice. Stated dimensions are measured to the exterior boundaries of the exterior walls and the centerline of interior demising walls and in fact vary from the dimensions that would be determined by using the description and definition of the "Unit" set forth in the Declaration (which generally only includes the interior airspace between the perimeter walls and excludes interior structural components).

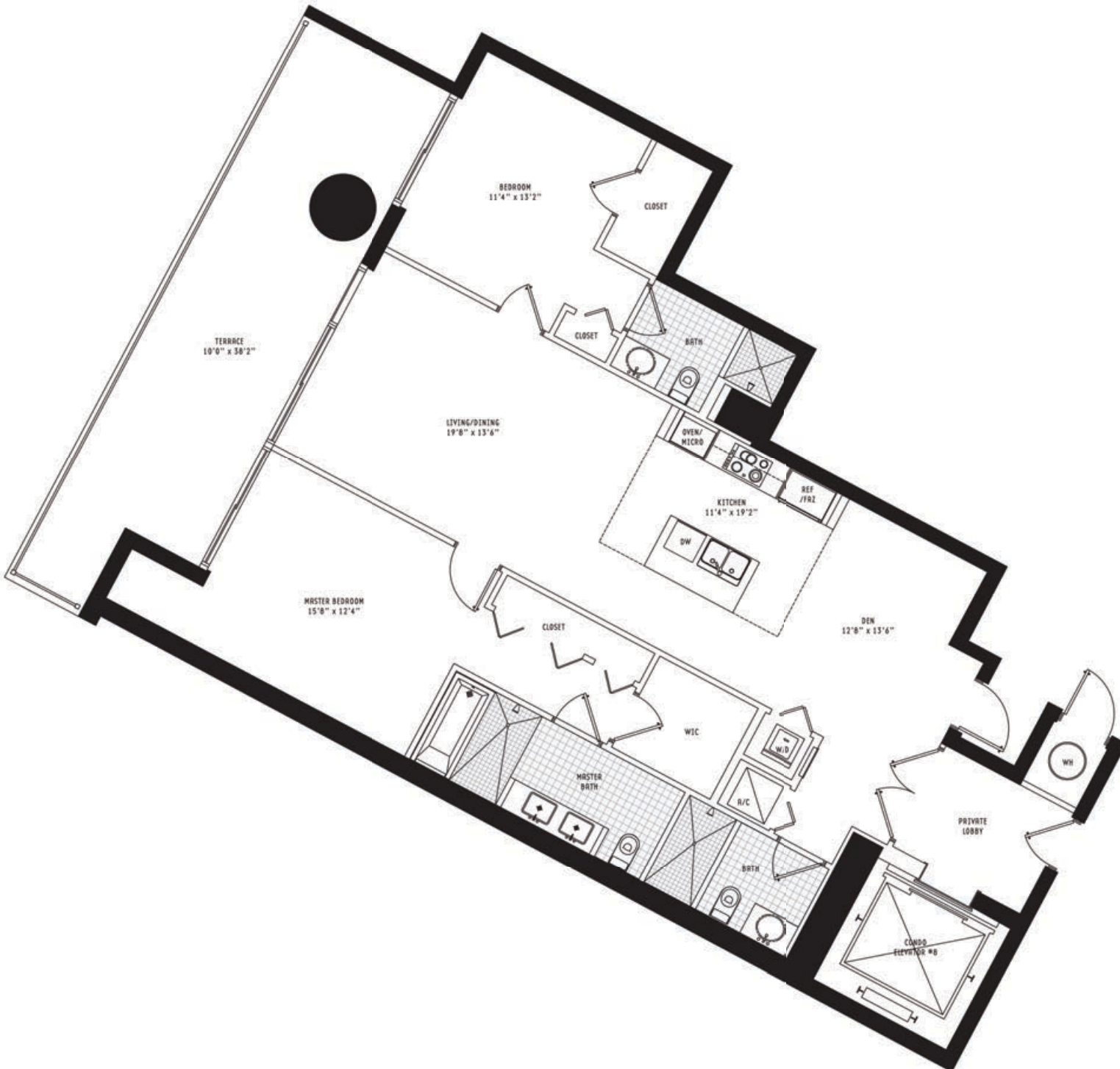
Interior	1,576 sq ft	146.4 m ²
Terrace	351 sq ft	32.6 m ²
Total area	1,927 sq ft	178.0 m ²

305.530.0200 900BiscayneBay.com

BISCAYNE

900

BAY



facci^învestments

UNIT F 1 Bedroom + Den • 2 Bath

All dimensions are approximate and all floor plans and development plans are subject to change by the developer without notice. Stated dimensions are measured to the exterior boundaries of the exterior walls and the centerline of interior demising walls and in fact vary from the dimensions that would be determined by using the description and definition of the "Unit" set forth in the Declaration (which generally only includes the interior airspace between the perimeter walls and excludes interior structural components).

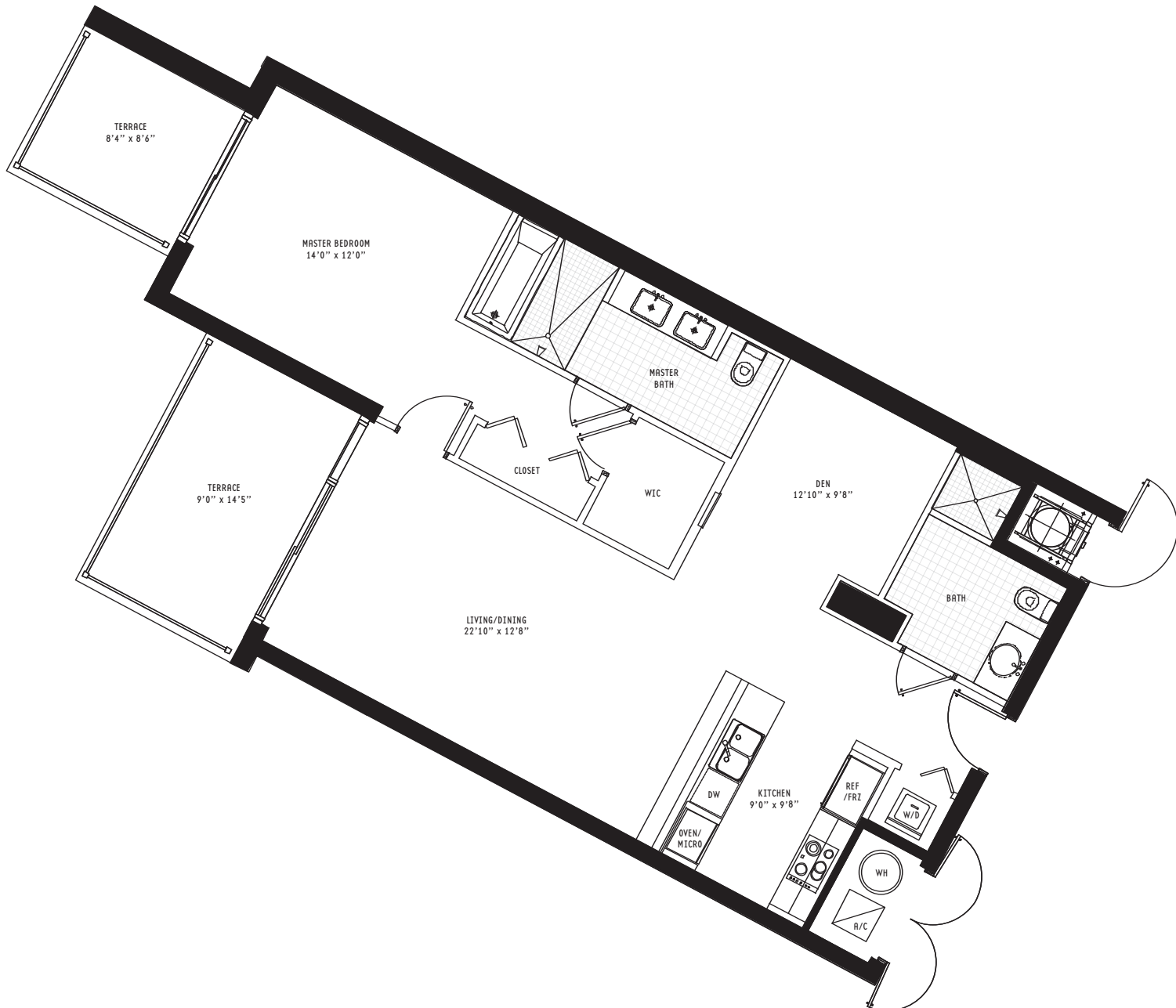
Interior	1,140 sq ft	105.9 m ²
Terrace	209 sq ft	19.4 m ²
Total area	1,349 sq ft	125.3 m ²

305.530.0200 900BiscayneBay.com

BISCAYNE



BAY



facci^hinvestments

UNIT G 2 Bedroom + Den • 2.5 Bath

All dimensions are approximate and all floor plans and development plans are subject to change by the developer without notice. Stated dimensions are measured to the exterior boundaries of the exterior walls and the centerline of interior demising walls and in fact vary from the dimensions that would be determined by using the description and definition of the "Unit" set forth in the Declaration (which generally only includes the interior airspace between the perimeter walls and excludes interior structural components).

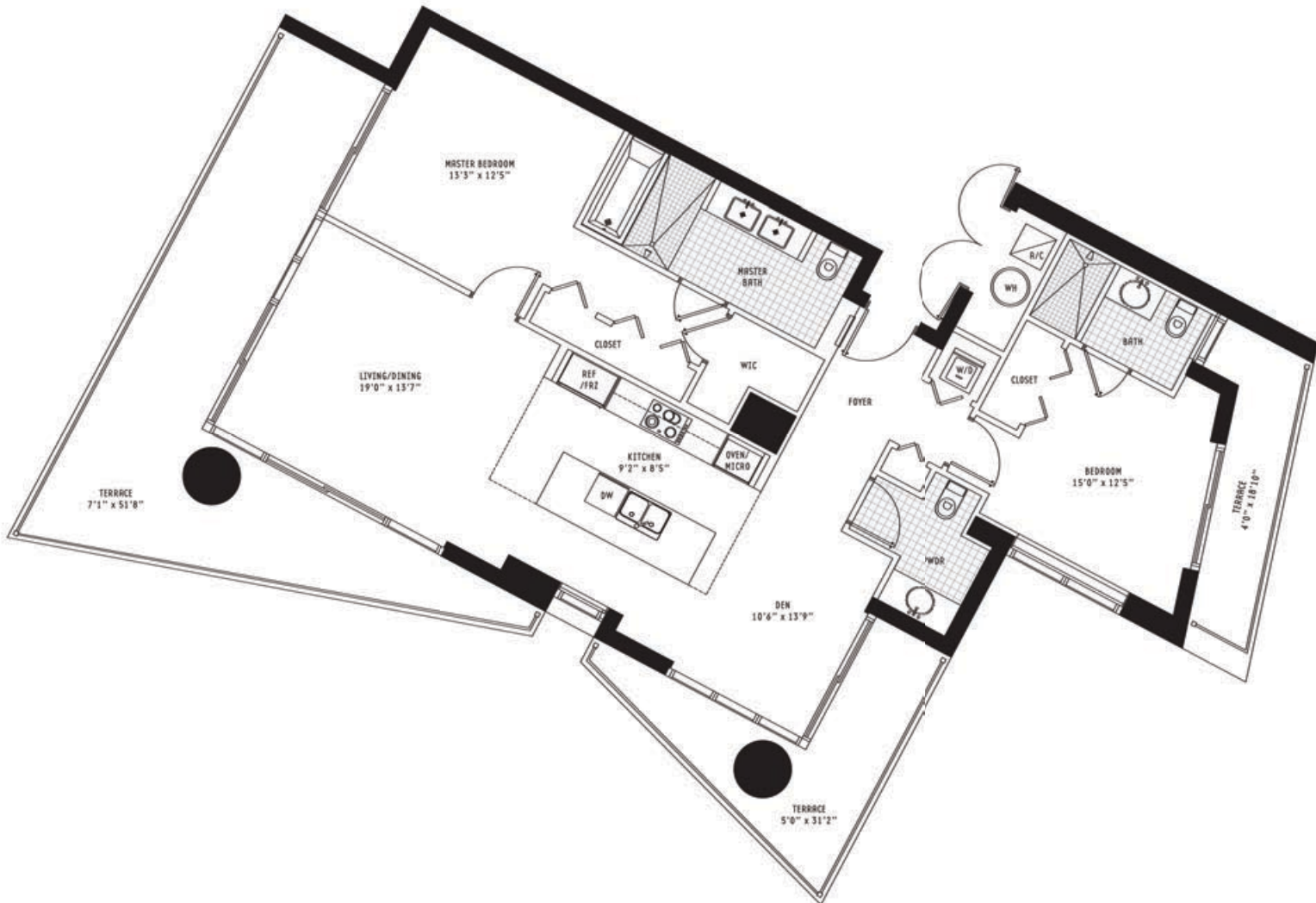
Interior	1,355 sq ft	125.9 m ²
Terrace	572 sq ft	53.0 m ²
Total area	1,927 sq ft	178.9 m ²

305.530.0200 900BiscayneBay.com

BISCAYNE



BAY



facciñinvestments

PENTHOUSE A 3 Bedroom + Den • 4.5 Bath

All dimensions are approximate and all floor plans and development plans are subject to change by the developer without notice. Stated dimensions are measured to the exterior boundaries of the exterior walls and the centerline of interior demising walls and in fact vary from the dimensions that would be determined by using the description and definition of the "Unit" set forth in the Declaration (which generally only includes the interior airspace between the perimeter walls and excludes interior structural components).

Interior	3,493 sq ft	324.5 m ²
Terrace	1,225 sq ft	113.9 m ²
Total area	4,718 sq ft	438.4 m ²

305.530.0200 900BiscayneBay.com

BISCAYNE

900

RAY



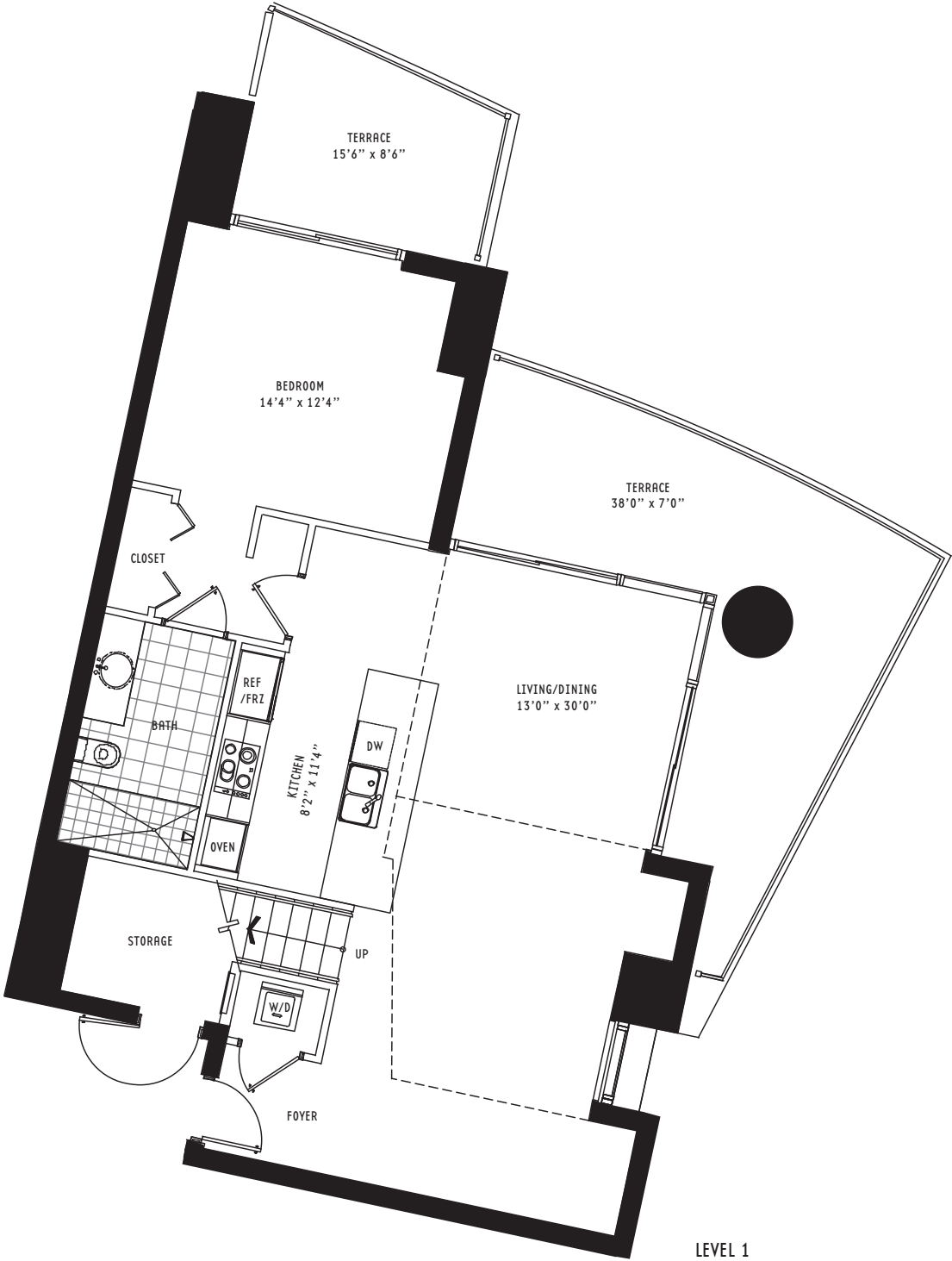
facciainvestments

TOWNHOME A2 Bedroom + Den • 3 Bath

All dimensions are approximate and all floor plans and development plans are subject to change by the developer without notice. Stated dimensions are measured to the exterior boundaries of the exterior walls and the centerline of interior demising walls and in fact vary from the dimensions that would be determined by using the description and definition of the "Unit" set forth in the Declaration (which generally only includes the interior airspace between the perimeter walls and excludes interior structural components).

Interior	1,982 sq ft	184.3 m ²
Terrace	527 sq ft	49.0 m ²
Total area	2,509 sq ft	233.3 m ²

305.530.0200900BiscayneBay.comBISCAYNE900BAY



TOWNHOME A 2 Bedroom + Den • 3 Bath

All dimensions are approximate and all floor plans and development plans are subject to change by the developer without notice. Stated dimensions are measured to the exterior boundaries of the exterior walls and the centerline of interior demising walls and in fact vary from the dimensions that would be determined by using the description and definition of the "Unit" set forth in the Declaration (which generally only includes the interior airspace between the perimeter walls and excludes interior structural components).

Interior	1,982 sq ft	184.3 m ²
Terrace	527 sq ft	49.0 m ²
Total area	2,509 sq ft	233.3 m ²

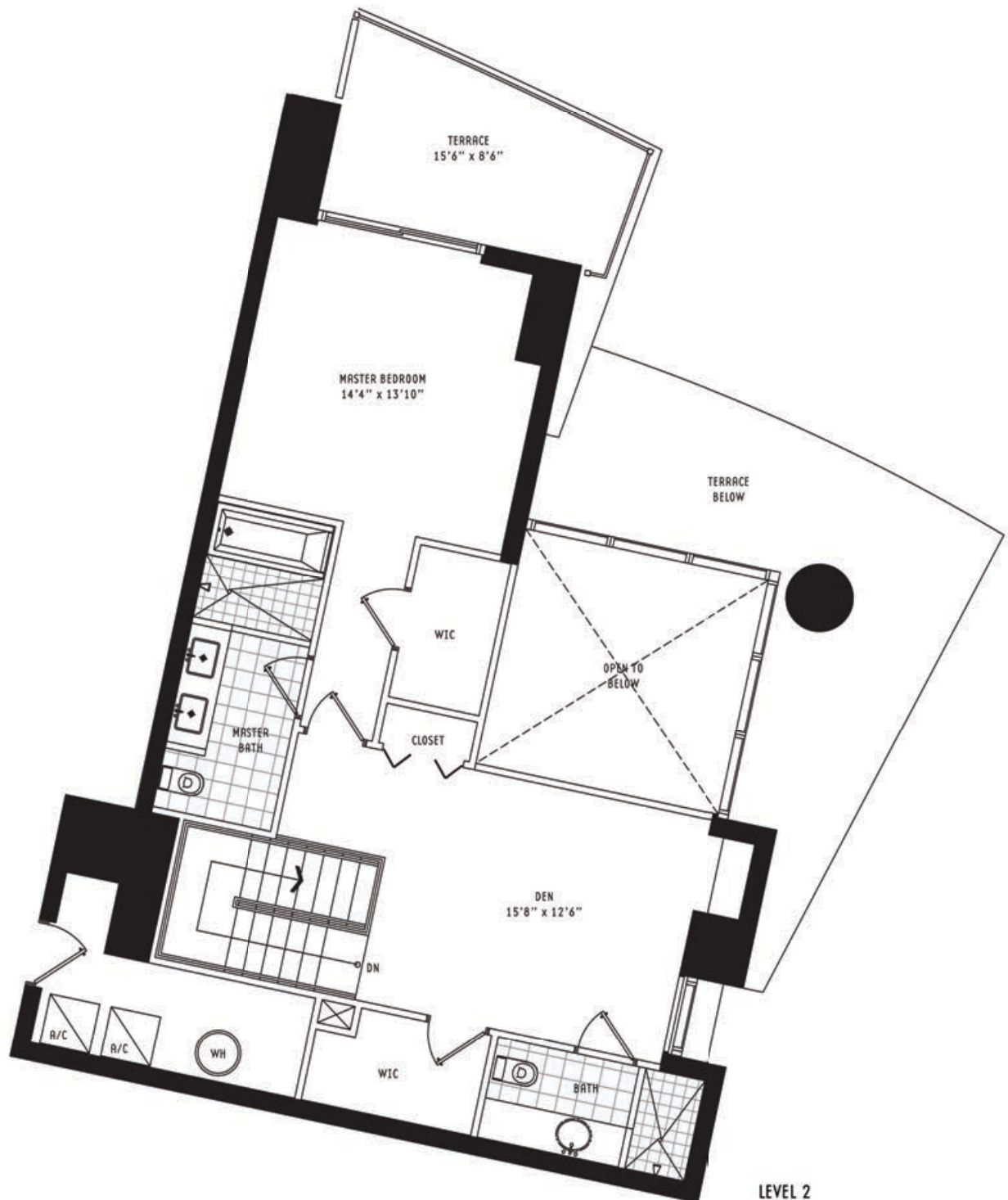
305.530.0200

900BiscayneBay.com

BISCAYNE

900

BAY



facci^învestments

TOWNHOME B1 2 Bedroom + Den • 3 Bath

All dimensions are approximate and all floor plans and development plans are subject to change by the developer without notice. Stated dimensions are measured to the exterior boundaries of the exterior walls and the centerline of interior demising walls and in fact vary from the dimensions that would be determined by using the description and definition of the "Unit" set forth in the Declaration (which generally only includes the interior airspace between the perimeter walls and excludes interior structural components).

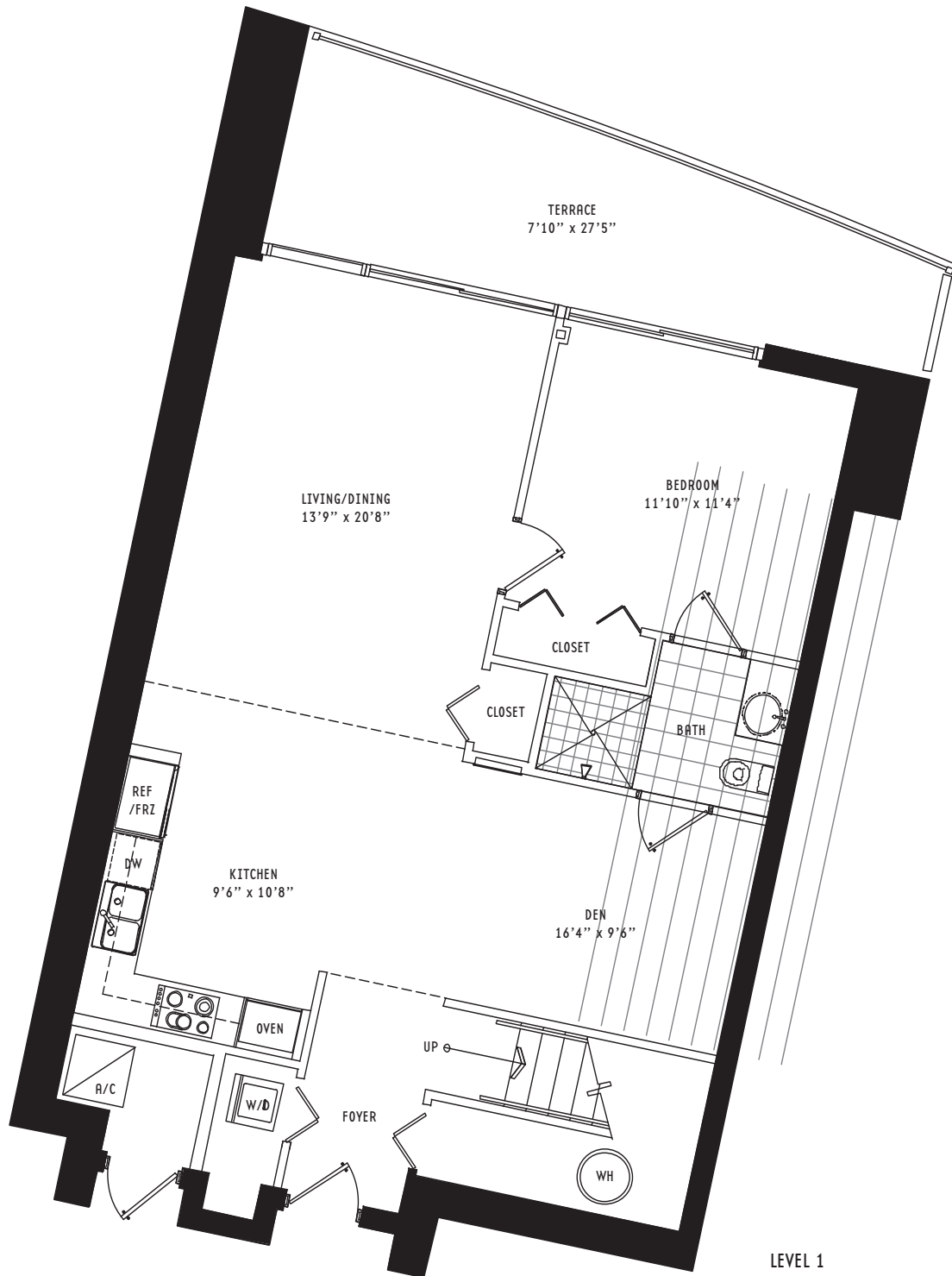
Interior	1,694 sq ft	157.5 m ²
Terrace	295 sq ft	27.4 m ²
Total area	1,989 sq ft	184.9 m ²

305.530.0200 900BiscayneBay.com

BISCAYNE



BAY



facci^învestments

TOWNHOME B2 2 Bedroom + Den • 3 Bath

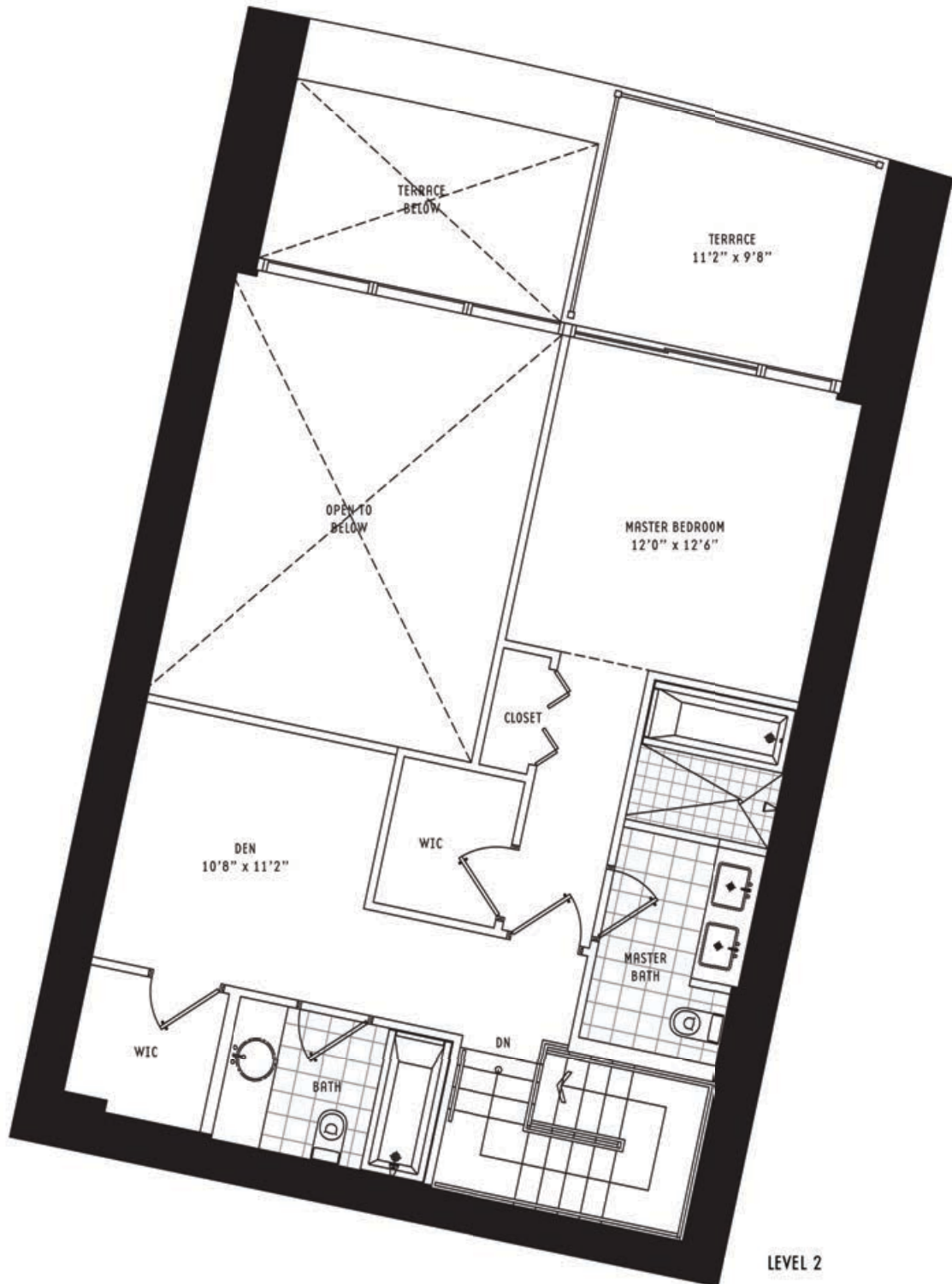
All dimensions are approximate and all floor plans and development plans are subject to change by the developer without notice. Stated dimensions are measured to the exterior boundaries of the exterior walls and the centerline of interior demising walls and in fact vary from the dimensions that would be determined by using the description and definition of the "Unit" set forth in the Declaration (which generally only includes the interior airspace between the perimeter walls and excludes interior structural components).

Interior	1,737 sq ft	161.5 m ²
Terrace	353 sq ft	32.8 m ²
Total area	2,090 sq ft	194.3 m²

305.530.0200 900BiscayneBay.com

BISCAYNE

900 BAY



facci^învestments

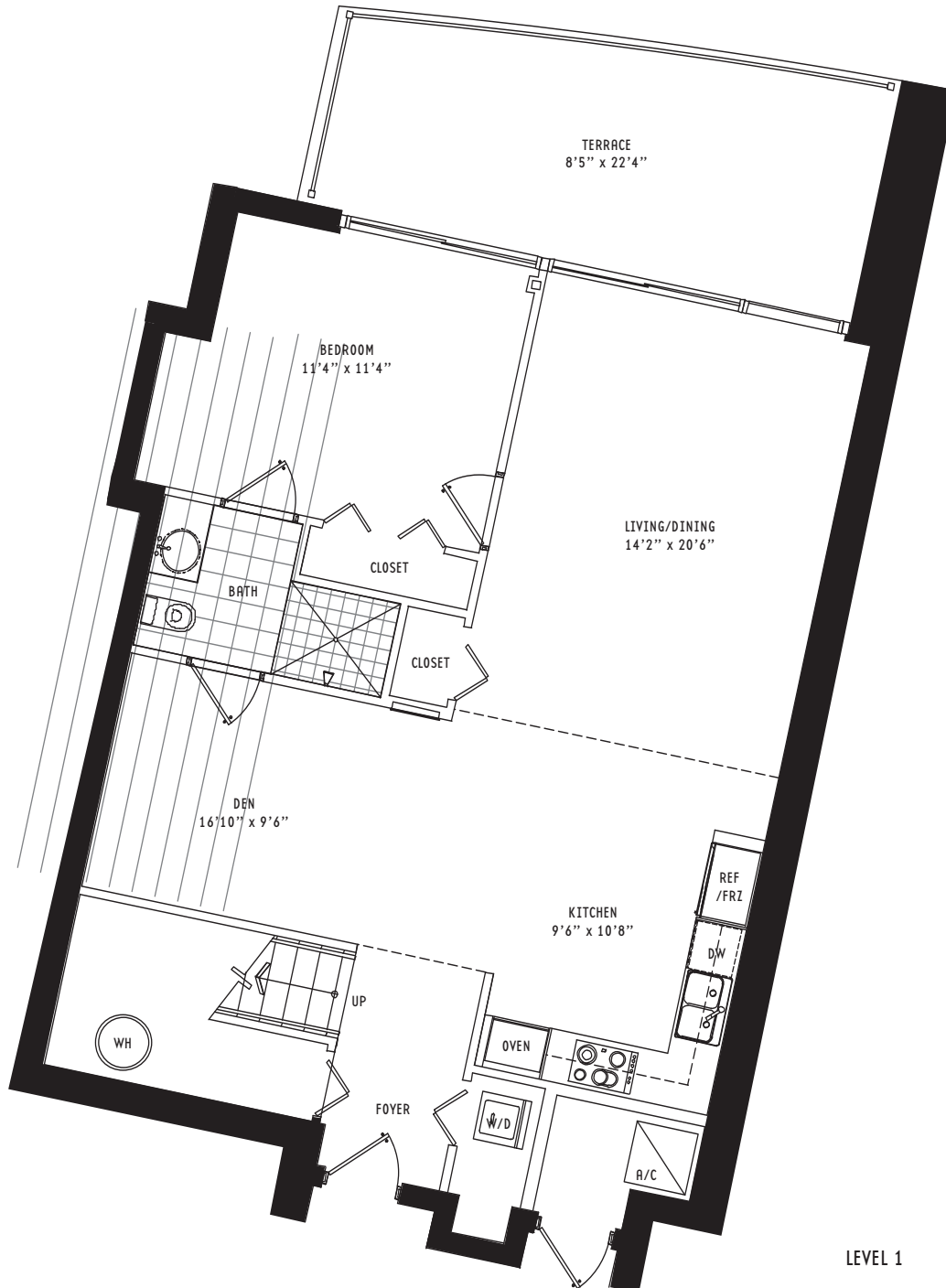
TOWNHOME B3 2 Bedroom + Den • 3 Bath

All dimensions are approximate and all floor plans and development plans are subject to change by the developer without notice. Stated dimensions are measured to the exterior boundaries of the exterior walls and the centerline of interior demising walls and in fact vary from the dimensions that would be determined by using the description and definition of the "Unit" set forth in the Declaration (which generally only includes the interior airspace between the perimeter walls and excludes interior structural components).

Interior	1,768 sq ft	164.4 m ²
Terrace	296 sq ft	27.5 m ²
Total area	2,064 sq ft	191.9 m ²

305.530.0200 900BiscayneBay.com

BISCAYNE



LEVEL 1

facci^învestments

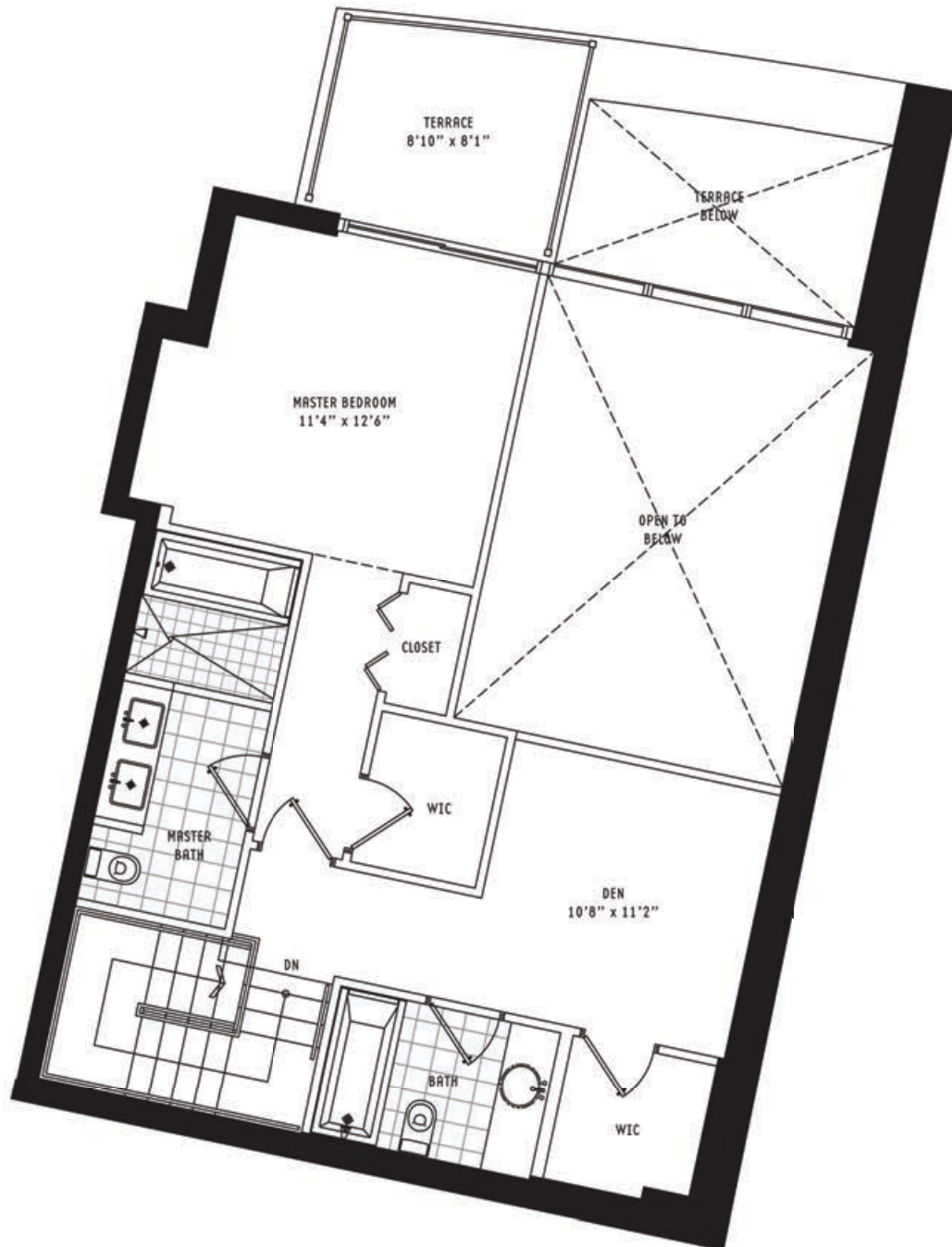
TOWNHOME B3 2 Bedroom + Den • 3 Bath

All dimensions are approximate and all floor plans and development plans are subject to change by the developer without notice. Stated dimensions are measured to the exterior boundaries of the exterior walls and the centerline of interior demising walls and in fact vary from the dimensions that would be determined by using the description and definition of the "Unit" set forth in the Declaration (which generally only includes the interior airspace between the perimeter walls and excludes interior structural components).

Interior	1,768 sq ft	164.4 m ²
Terrace	296 sq ft	27.5 m ²
Total area	2,064 sq ft	191.9 m ²

305.530.0200 900BiscayneBay.com

BISCAYNE 900 BAY



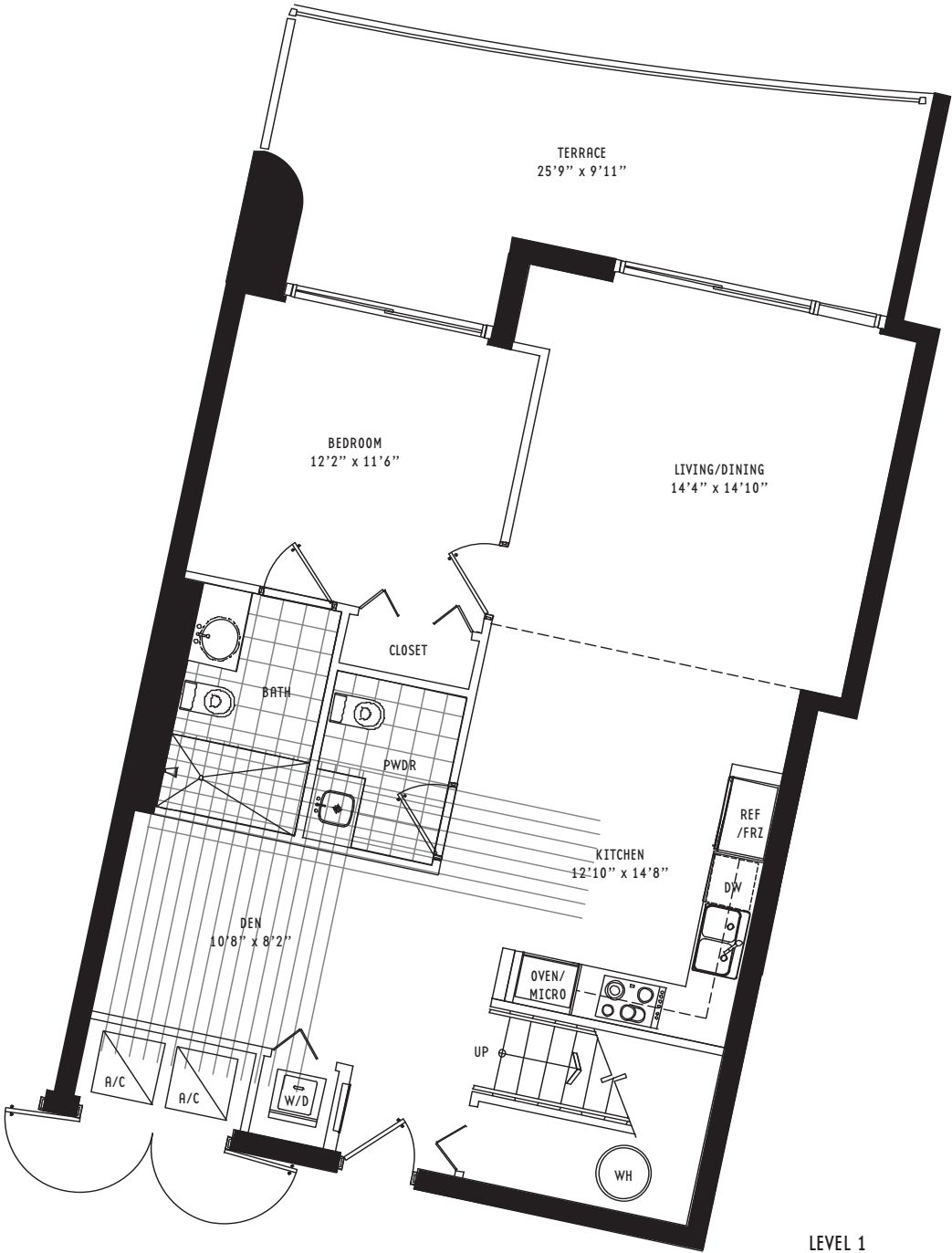
LEVEL 2

TOWNHOME C2 Bedroom + Den • 2.5 Bath

All dimensions are approximate and all floor plans and development plans are subject to change by the developer without notice. Stated dimensions are measured to the exterior boundaries of the exterior walls and the centerline of interior demising walls and in fact vary from the dimensions that would be determined by using the description and definition of the "Unit" set forth in the Declaration (which generally only includes the interior airspace between the perimeter walls and excludes interior structural components).

Interior	1,711 sq ft	159.1 m ²
Terrace	365 sq ft	33.9 m ²
Total area	2,076 sq ft	193.0 m ²

305.530.0200900BiscayneBay.comBISCAYNE



LEVEL 1

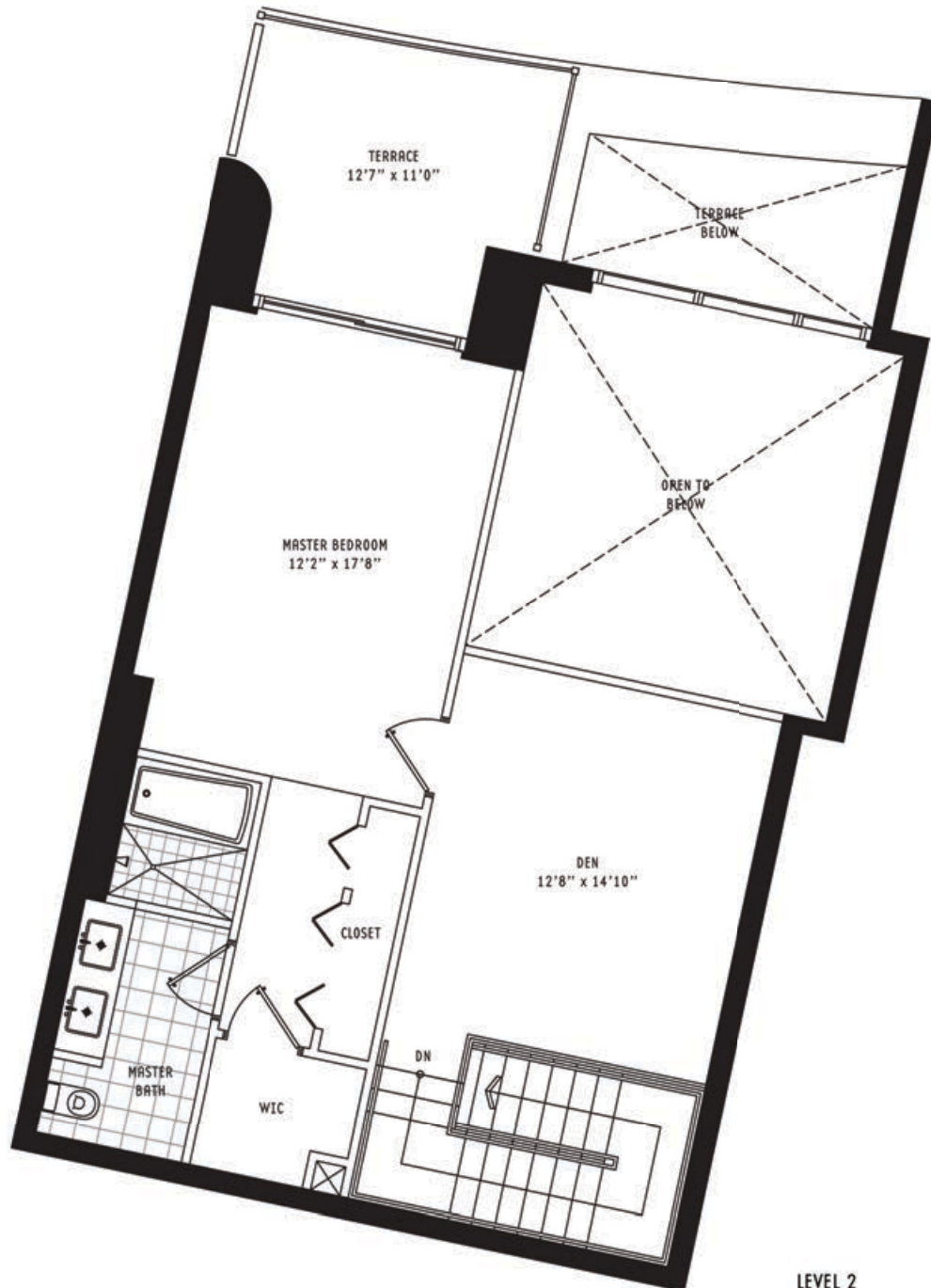
TOWNHOME C 2 Bedroom + Den • 2.5 Bath

All dimensions are approximate and all floor plans and development plans are subject to change by the developer without notice. Stated dimensions are measured to the exterior boundaries of the exterior walls and the centerline of interior demising walls and in fact vary from the dimensions that would be determined by using the description and definition of the "Unit" set forth in the Declaration (which generally only includes the interior airspace between the perimeter walls and excludes interior structural components).

Interior	1,711 sq ft	159.1 m ²
Terrace	365 sq ft	33.9 m ²
Total area	2,076 sq ft	193.0 m ²

305.530.0200 900BiscayneBay.com

BISCAYNE 900 BAY



LEVEL 2

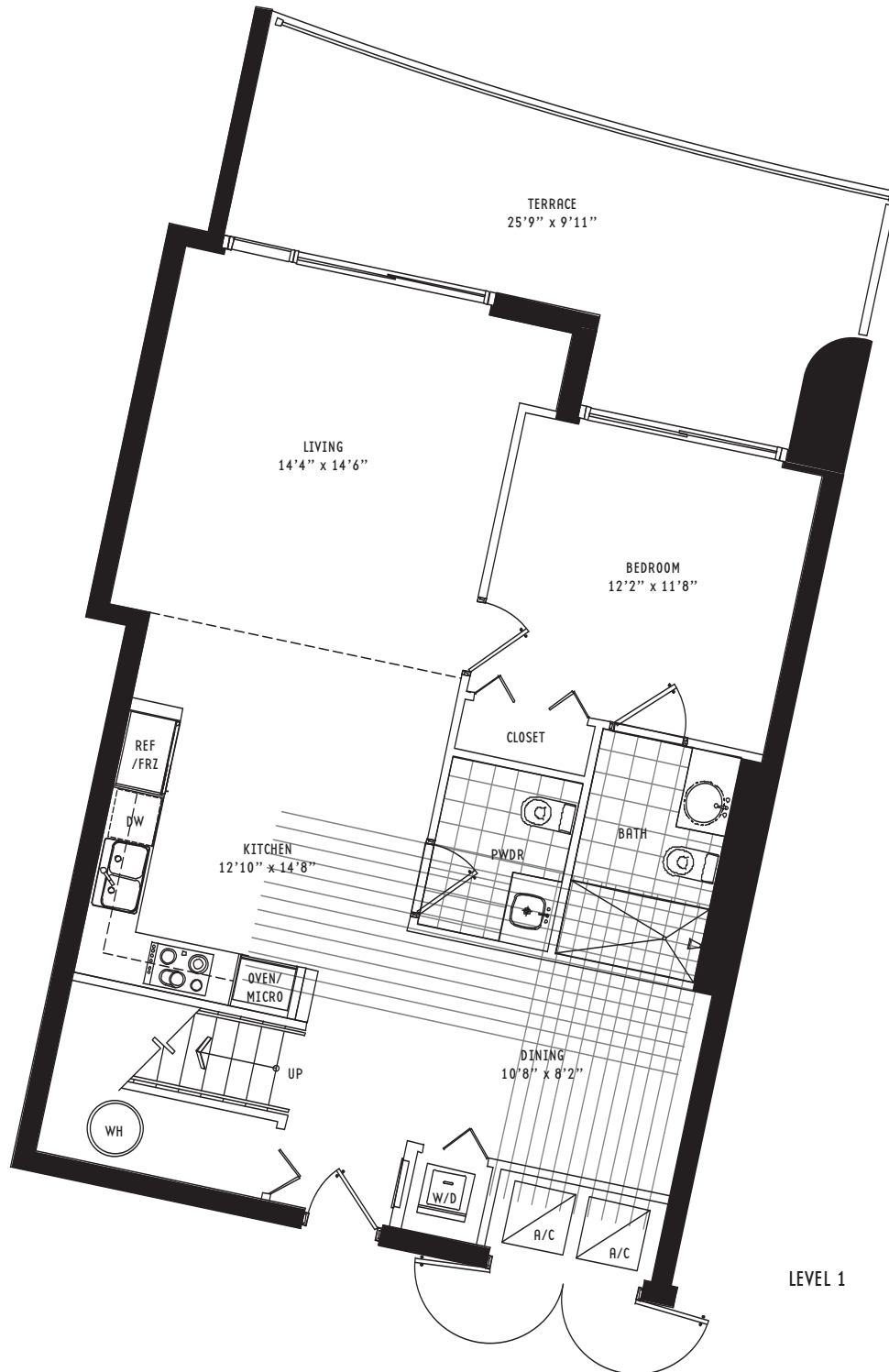
TOWNHOME CR 2 Bedroom + Den • 2.5 Bath

All dimensions are approximate and all floor plans and development plans are subject to change by the developer without notice. Stated dimensions are measured to the exterior boundaries of the exterior walls and the centerline of interior demising walls and in fact vary from the dimensions that would be determined by using the description and definition of the "Unit" set forth in the Declaration (which generally only includes the interior airspace between the perimeter walls and excludes interior structural components).

Interior	1,711 sq ft	159.1 m ²
Terrace	365 sq ft	33.9 m ²
Total area	2,076 sq ft	193.0 m ²

305.530.0200 900BiscayneBay.com

BISCAYNE



LEVEL 1

facci^învestments

TOWNHOME CR 2 Bedroom + Den • 2.5 Bath

All dimensions are approximate and all floor plans and development plans are subject to change by the developer without notice. Stated dimensions are measured to the exterior boundaries of the exterior walls and the centerline of interior demising walls and in fact vary from the dimensions that would be determined by using the description and definition of the "Unit" set forth in the Declaration (which generally only includes the interior airspace between the perimeter walls and excludes interior structural components).

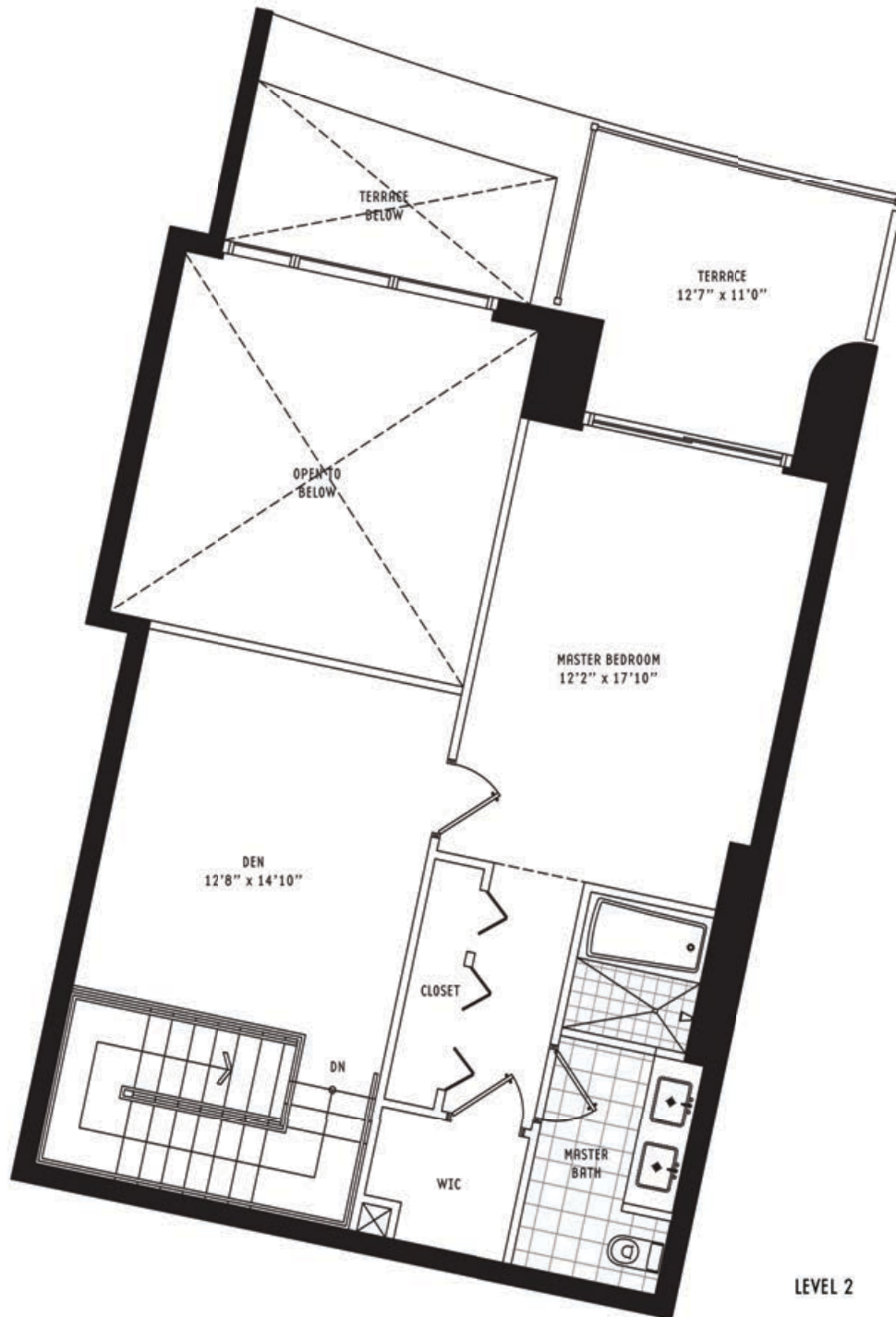
Interior	1,711 sq ft	159.1 m ²
Terrace	365 sq ft	33.9 m ²
Total area	2,076 sq ft	193.0 m ²

305.530.0200 900BiscayneBay.com

BISCAYNE

900

BAY



LEVEL 2

facci^învestments