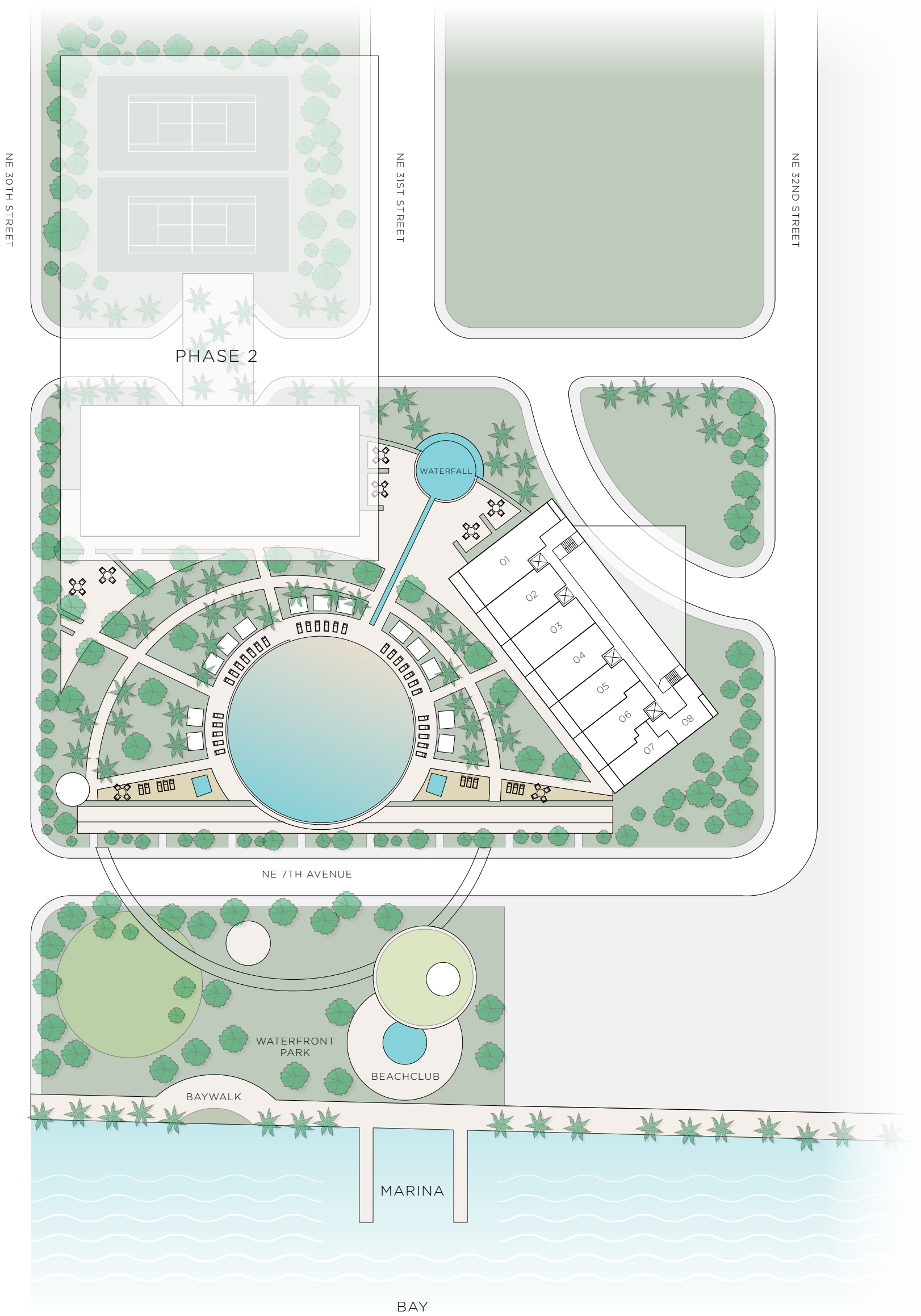


PARAISO BAY

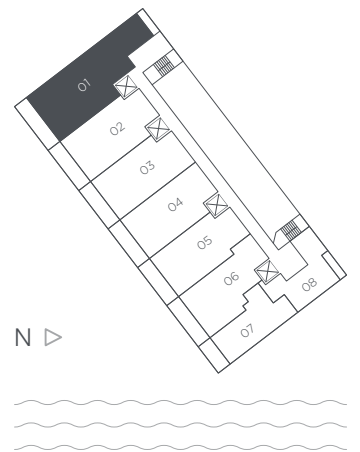
RESIDENCES FLOORPLANS



SITE PLAN




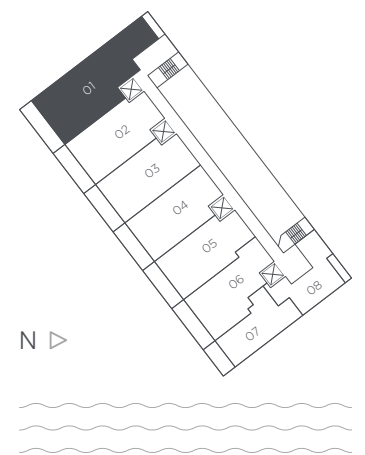
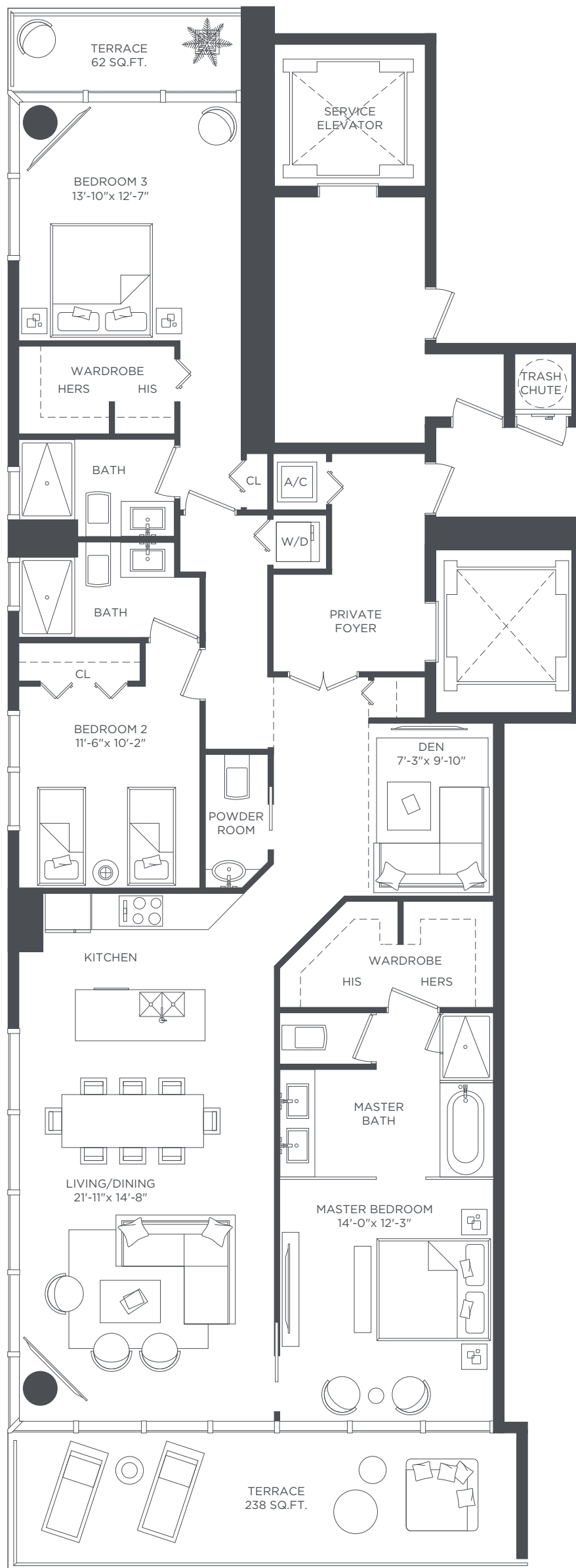
Stated dimensions are measured to the exterior boundaries of the exterior walls and the centerline of interior demising walls and in fact vary from the dimensions that would be determined by using the description and definition of the "Unit" set forth in the Declaration (which generally only includes the interior airspace between the perimeter walls and excludes interior structural components). For your reference, the area of the Unit, determined in accordance with those defined unit boundaries, is + or - 1,914 sq. ft. for units 01, is + or - 1,694 sq. ft. for units 01 Mod, is + or - 935 sq. ft. for units 02, is + or - 1,161 sq. ft. for units 02 Mod, is + or - 1,179 sq. ft. for units 03, is + or - 1,184 sq. ft. for units 04, is + or - 1,129 sq. ft. for units 05, is + or - 1,058 sq. ft. for units 06, is + or - 918 sq. ft. for units 07, is + or - 743 sq. ft. for units 08. Note that measurements of rooms set forth on this floor plan are generally taken at the greatest points of each given room (as if the room were a perfect rectangle), without regard for any cutouts. Accordingly, the area of the actual room will typically be smaller than the product obtained by multiplying the stated length times width. All dimensions are approximate and may vary with actual construction, and all floor plans and development plans are subject to change.



RESIDENCE 01
 LEVELS 28 TO 49
 4 BEDROOMS 4 1/2 BATHS + DEN

A/C INTERIOR AREA	2,246 SQ.FT.	208.66 SQ.M.
TERRACE AREA	300 SQ.FT.	27.87 SQ.M.
TOTAL RESIDENCE	2,546 SQ.FT.	236.53 SQ.M.

 Stated dimensions are measured to the exterior boundaries of the exterior walls and the centerline of interior demising walls and in fact vary from the dimensions that would be determined by using the description and definition of the "Unit" set forth in the Declaration (which generally only includes the interior airspace between the perimeter walls and excludes interior structural components). For your reference, the area of the Unit, determined in accordance with those defined unit boundaries, is + or - 1,914 sq. ft. for units 01. Note that measurements of rooms set forth on this floor plan are generally taken at the greatest points of each given room (as if the room were a perfect rectangle), without regard for any cutouts. Accordingly, the area of the actual room will typically be smaller than the product obtained by multiplying the stated length times width. All dimensions are approximate and may vary with actual construction, and all floor plans and development plans are subject to change.

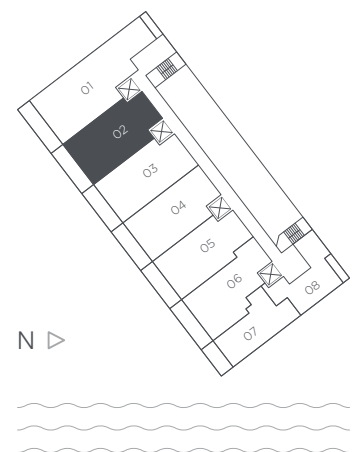
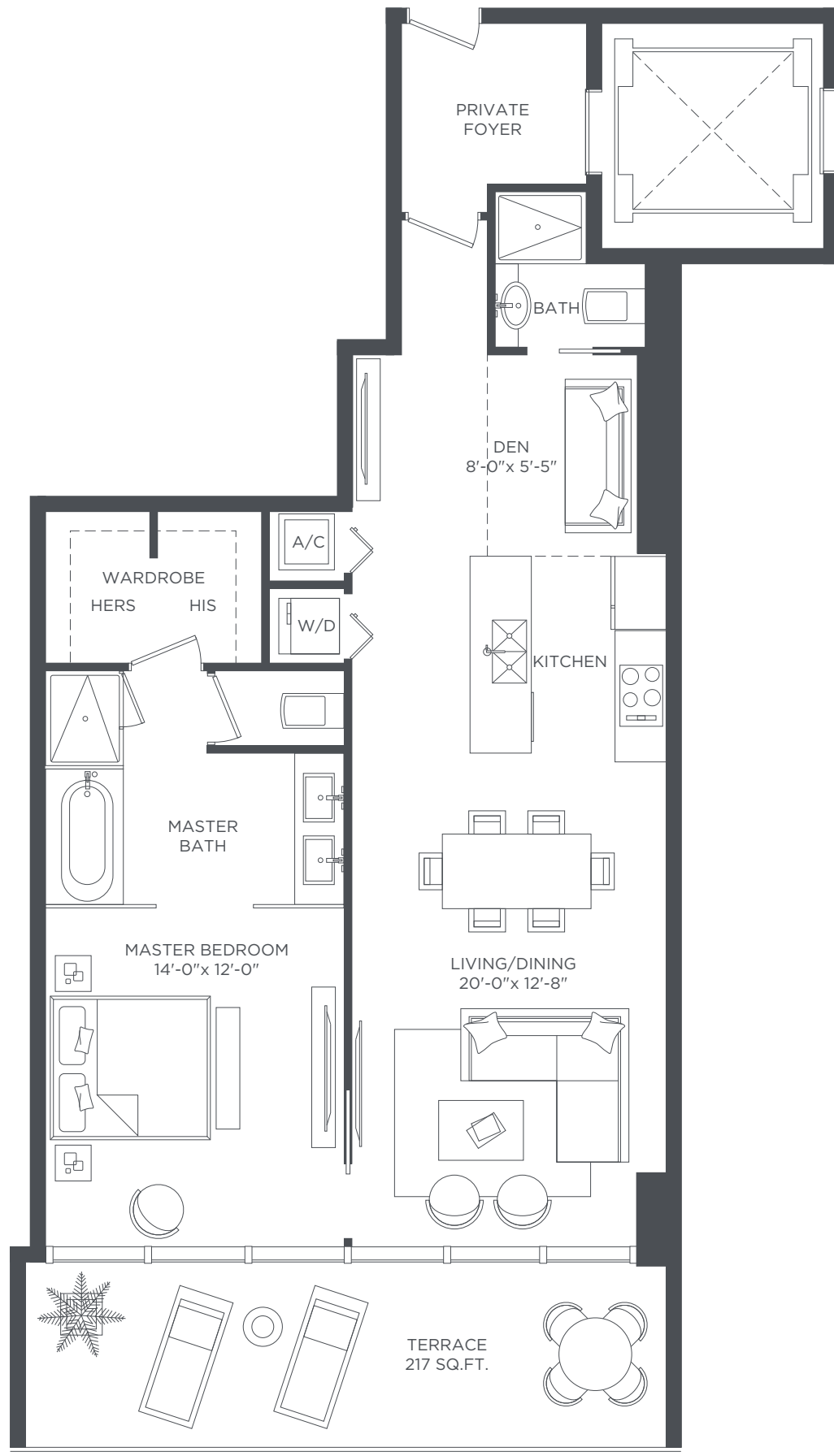


RESIDENCE 01 MOD
 LEVELS 4 TO 27
 3 BEDROOMS 3 1/2 BATHS + DEN

A/C INTERIOR AREA	1,930 SQ.FT.	179.30 SQ.M.
TERRACE AREA	300 SQ.FT.	27.87 SQ.M.
TOTAL RESIDENCE	2,230 SQ.FT.	207.17 SQ.M.



Stated dimensions are measured to the exterior boundaries of the exterior walls and the centerline of interior demising walls and in fact vary from the dimensions that would be determined by using the description and definition of the "Unit" set forth in the Declaration (which generally only includes the interior airspace between the perimeter walls and excludes interior structural components). For your reference, the area of the Unit, determined in accordance with those defined unit boundaries, is + or - 1,694 sq. ft. for units 01 Mod Note that measurements of rooms set forth on this floor plan are generally taken at the greatest points of each given room (as if the room were a perfect rectangle), without regard for any cutouts. Accordingly, the area of the actual room will typically be smaller than the product obtained by multiplying the stated length times width. All dimensions are approximate and may vary with actual construction, and all floor plans and development plans are subject to change.

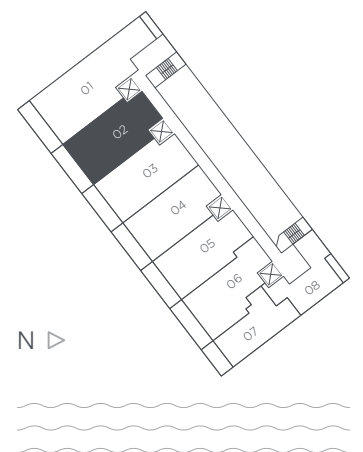
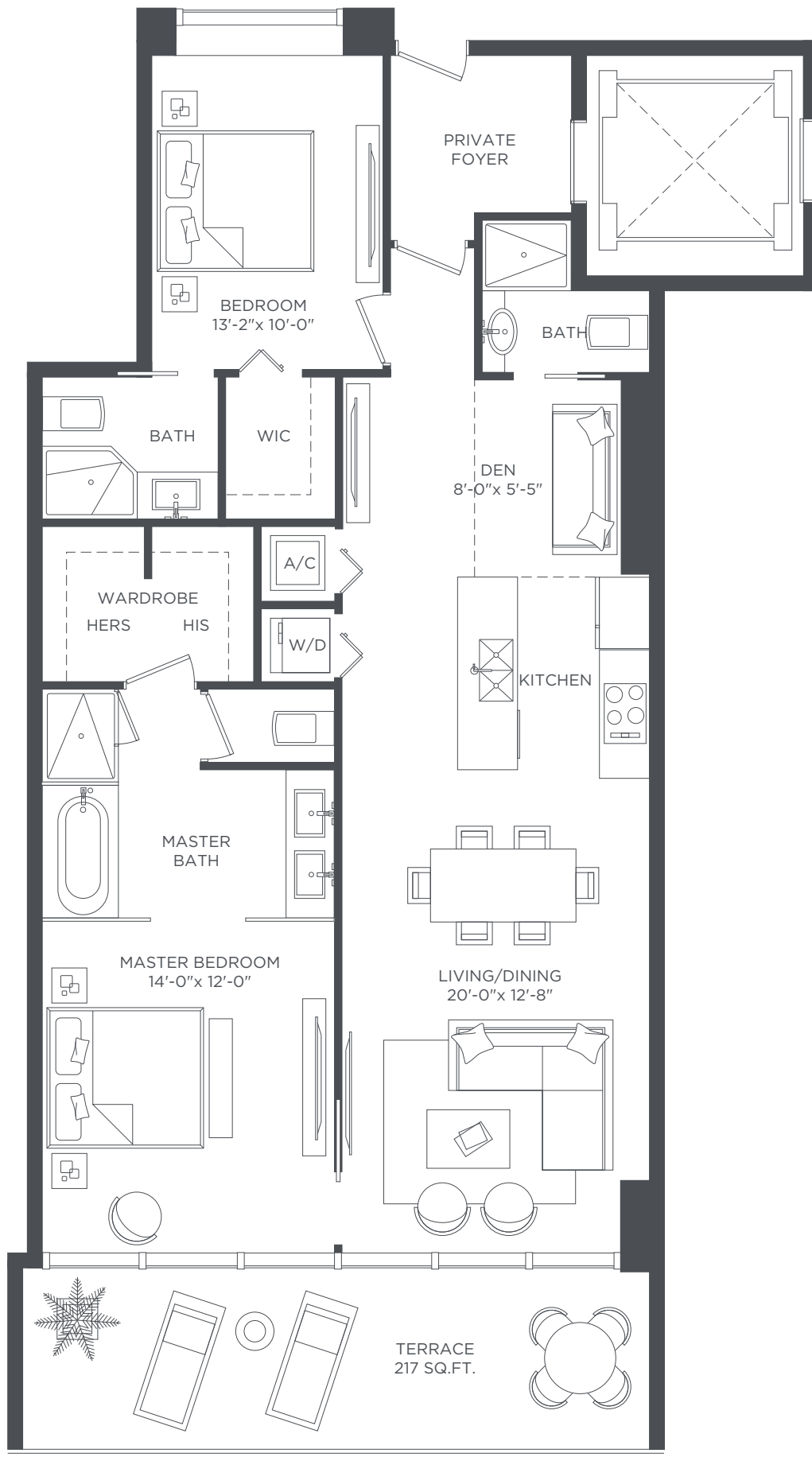


RESIDENCE 02
 LEVELS 28 TO 49
 1 BEDROOM 2 BATHS + DEN

A/C INTERIOR AREA	1,062 SQ.FT.	98.66 SQ.M.
TERRACE AREA	217 SQ.FT.	20.16 SQ.M.
TOTAL RESIDENCE	1,279 SQ.FT.	118.82 SQ.M.



Stated dimensions are measured to the exterior boundaries of the exterior walls and the centerline of interior demising walls and in fact vary from the dimensions that would be determined by using the description and definition of the "Unit" set forth in the Declaration (which generally only includes the interior airspace between the perimeter walls and excludes interior structural components). For your reference, the area of the Unit, determined in accordance with those defined unit boundaries, is + or - 935 sq. ft. for units 02. Note that measurements of rooms set forth on this floor plan are generally taken at the greatest points of each given room (as if the room were a perfect rectangle), without regard for any cutouts. Accordingly, the area of the actual room will typically be smaller than the product obtained by multiplying the stated length times width. All dimensions are approximate and may vary with actual construction, and all floor plans and development plans are subject to change.

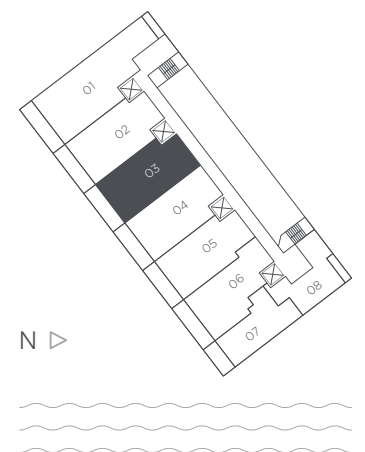
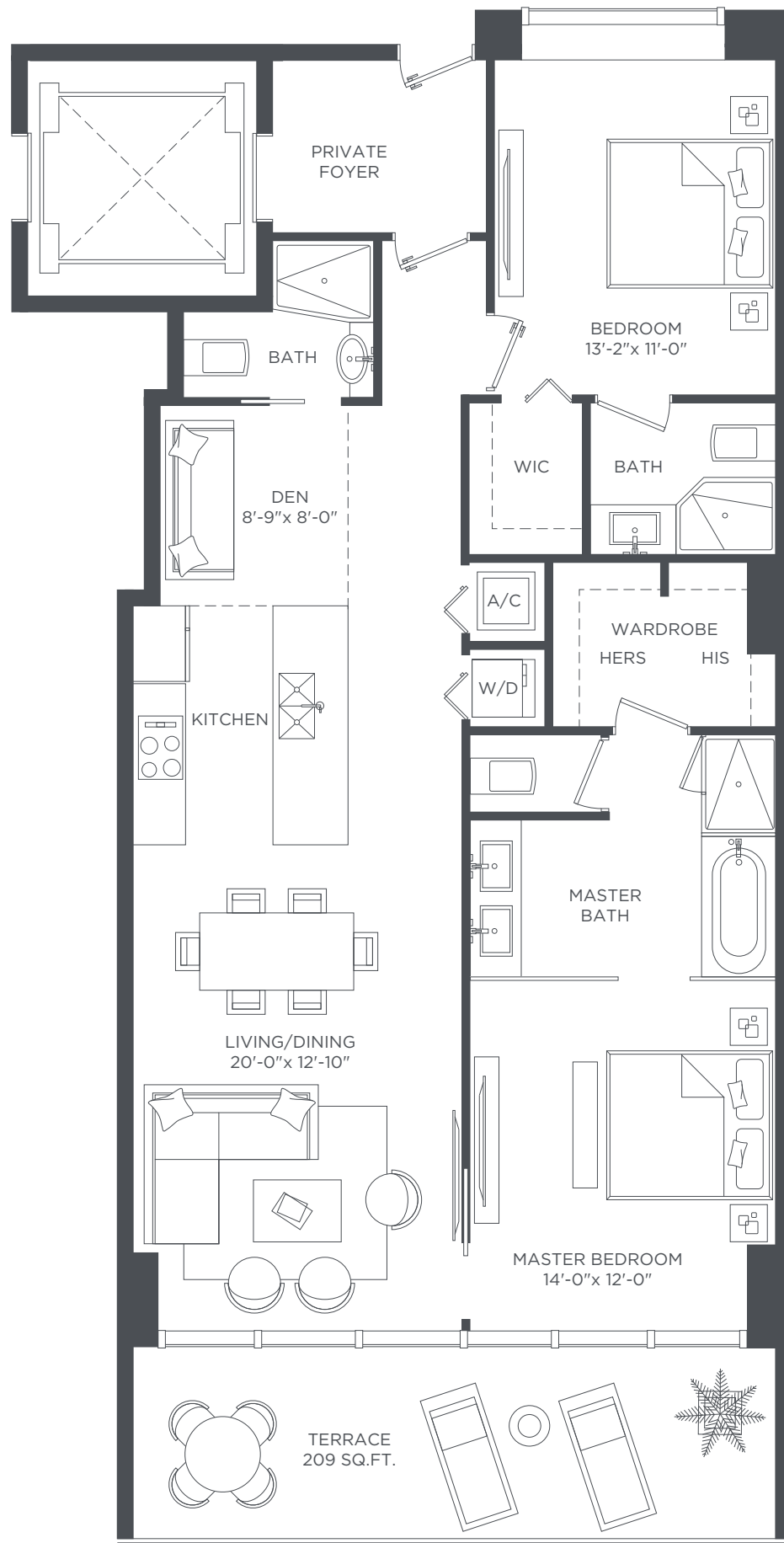


RESIDENCE 02 MOD
 LEVELS 4 TO 27
 2 BEDROOMS 3 BATHS + DEN

A/C INTERIOR AREA	1,378 SQ.FT.	128.02 SQ.M.
TERRACE AREA	217 SQ.FT.	20.16 SQ.M.
TOTAL RESIDENCE	1,595 SQ.FT.	148.18 SQ.M.



Stated dimensions are measured to the exterior boundaries of the exterior walls and the centerline of interior demising walls and in fact vary from the dimensions that would be determined by using the description and definition of the "Unit" set forth in the Declaration (which generally only includes the interior airspace between the perimeter walls and excludes interior structural components). For your reference, the area of the Unit, determined in accordance with those defined unit boundaries, is + or - 1,161 sq. ft. for units 02 Mod Note that measurements of rooms set forth on this floor plan are generally taken at the greatest points of each given room (as if the room were a perfect rectangle), without regard for any cutouts. Accordingly, the area of the actual room will typically be smaller than the product obtained by multiplying the stated length times width. All dimensions are approximate and may vary with actual construction, and all floor plans and development plans are subject to change.



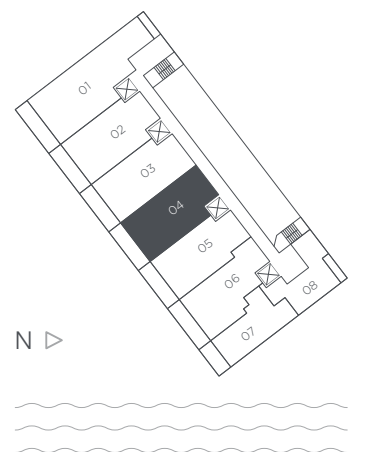
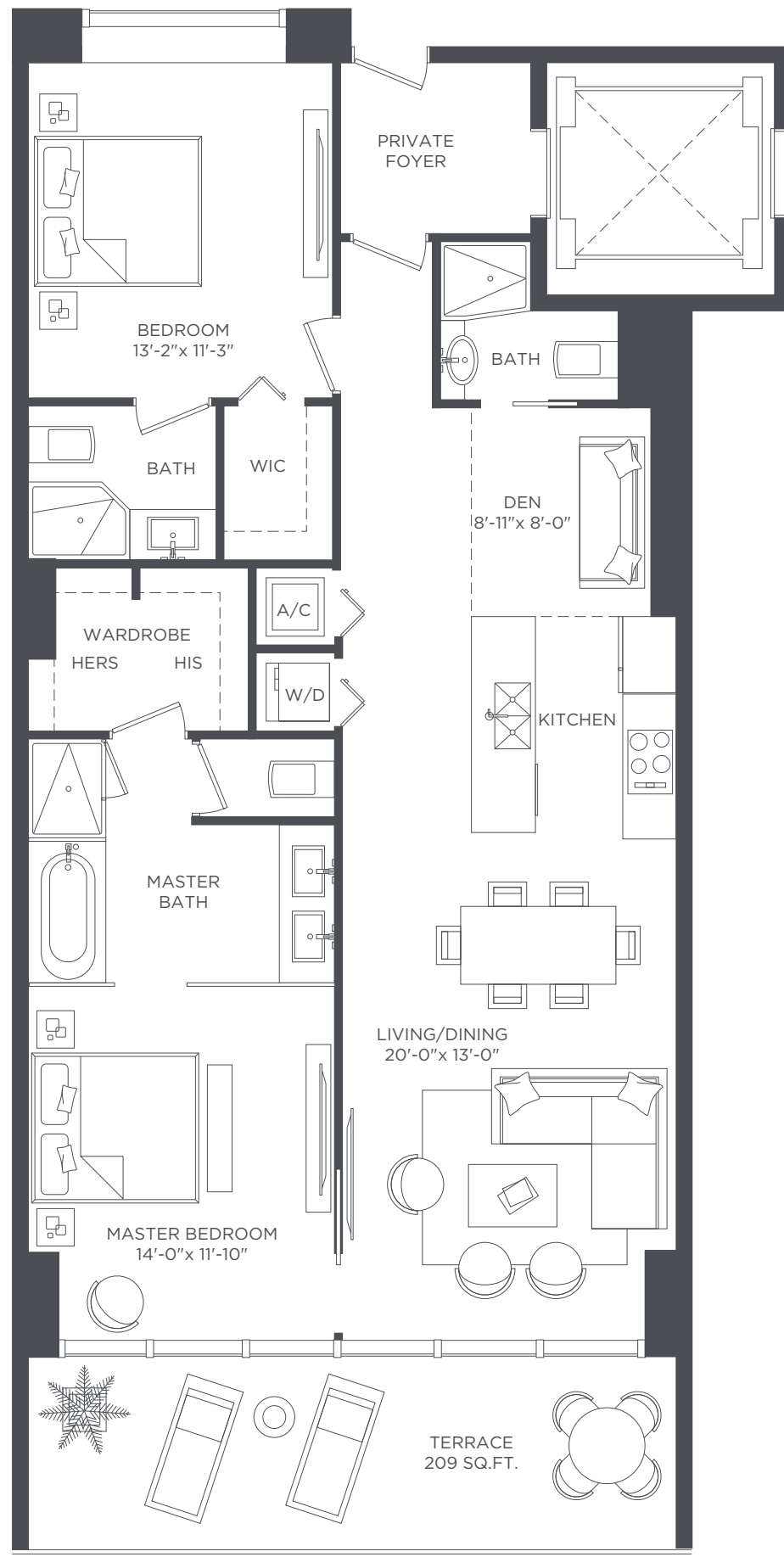
RESIDENCE 03

2 BEDROOMS 3 BATHS + DEN

A/C INTERIOR AREA	1,301 SQ.FT.	120.86 SQ.M.
TERRACE AREA	209 SQ.FT.	19.41 SQ.M.
TOTAL RESIDENCE	1,510 SQ.FT.	140.27 SQ.M.



Stated dimensions are measured to the exterior boundaries of the exterior walls and the centerline of interior demising walls and in fact vary from the dimensions that would be determined by using the description and definition of the "Unit" set forth in the Declaration (which generally only includes the interior airspace between the perimeter walls and excludes interior structural components). For your reference, the area of the Unit, determined in accordance with those defined unit boundaries, is + or - 1,179 sq. ft. for units 03. Note that measurements of rooms set forth on this floor plan are generally taken at the greatest points of each given room (as if the room were a perfect rectangle), without regard for any cutouts. Accordingly, the area of the actual room will typically be smaller than the product obtained by multiplying the stated length times width. All dimensions are approximate and may vary with actual construction, and all floor plans and development plans are subject to change.



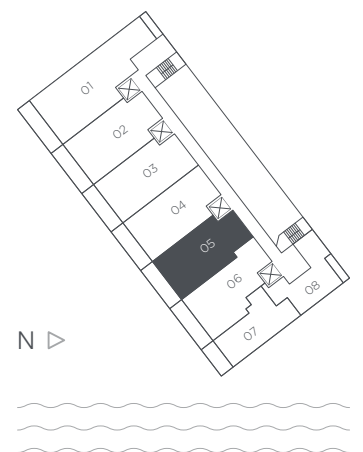
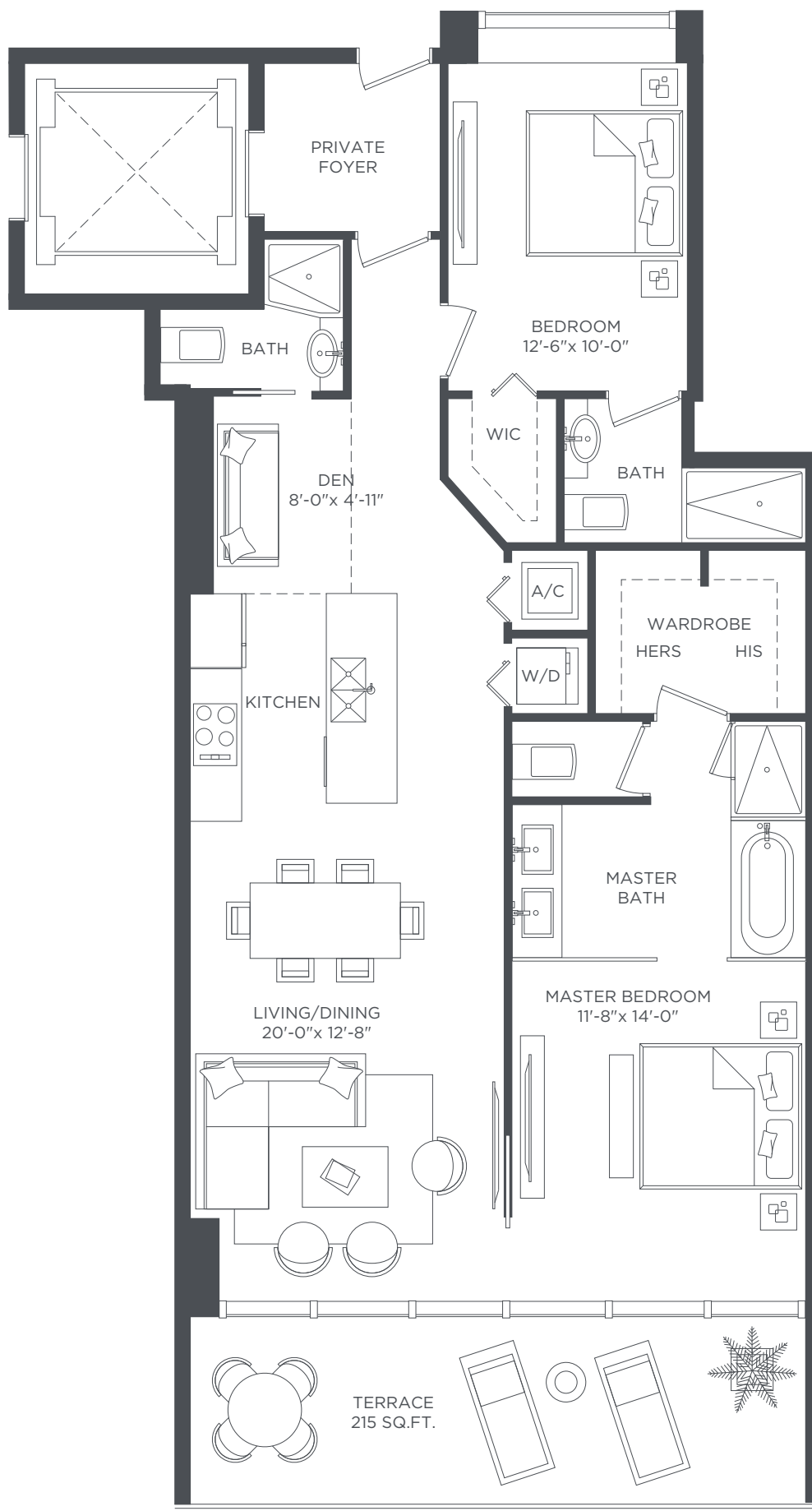
RESIDENCE 04

2 BEDROOMS 3 BATHS + DEN

A/C INTERIOR AREA	1,301 SQ.FT.	120.86 SQ.M.
TERRACE AREA	209 SQ.FT.	19.41 SQ.M.
TOTAL RESIDENCE	1,510 SQ.FT.	140.27 SQ.M.



Stated dimensions are measured to the exterior boundaries of the exterior walls and the centerline of interior demising walls and in fact vary from the dimensions that would be determined by using the description and definition of the "Unit" set forth in the Declaration (which generally only includes the interior airspace between the perimeter walls and excludes interior structural components). For your reference, the area of the Unit, determined in accordance with those defined unit boundaries, is + or - 1,184 sq. ft. for units 04. Note that measurements of rooms set forth on this floor plan are generally taken at the greatest points of each given room (as if the room were a perfect rectangle), without regard for any cutouts. Accordingly, the area of the actual room will typically be smaller than the product obtained by multiplying the stated length times width. All dimensions are approximate and may vary with actual construction, and all floor plans and development plans are subject to change.



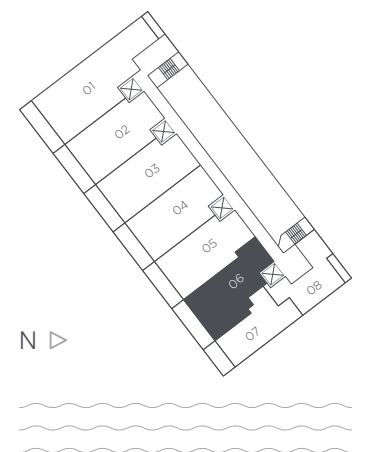
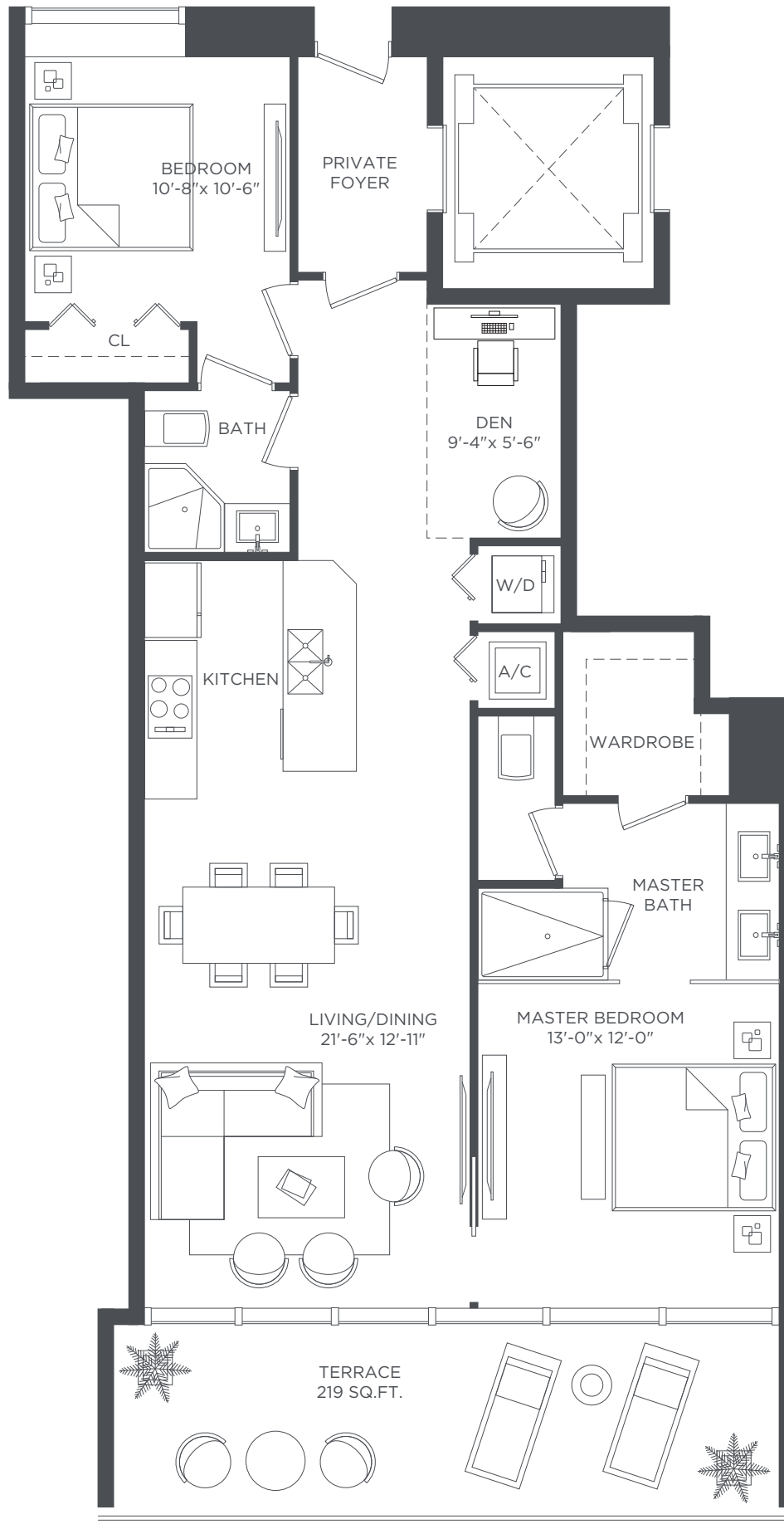
RESIDENCE 05

2 BEDROOMS 3 BATHS + DEN

A/C INTERIOR AREA	1,322 SQ.FT.	122.81 SQ.M.
TERRACE AREA	215 SQ.FT.	19.97 SQ.M.
TOTAL RESIDENCE	1,537 SQ.FT.	142.78 SQ.M.



Stated dimensions are measured to the exterior boundaries of the exterior walls and the centerline of interior demising walls and in fact vary from the dimensions that would be determined by using the description and definition of the "Unit" set forth in the Declaration (which generally only includes the interior airspace between the perimeter walls and excludes interior structural components). For your reference, the area of the Unit, determined in accordance with those defined unit boundaries, is + or - 1,129 sq. ft. for units 05. Note that measurements of rooms set forth on this floor plan are generally taken at the greatest points of each given room (as if the room were a perfect rectangle), without regard for any cutouts. Accordingly, the area of the actual room will typically be smaller than the product obtained by multiplying the stated length times width. All dimensions are approximate and may vary with actual construction, and all floor plans and development plans are subject to change.



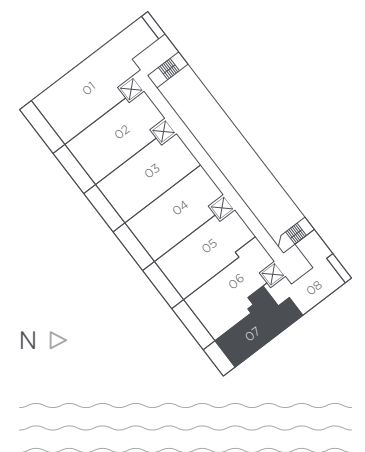
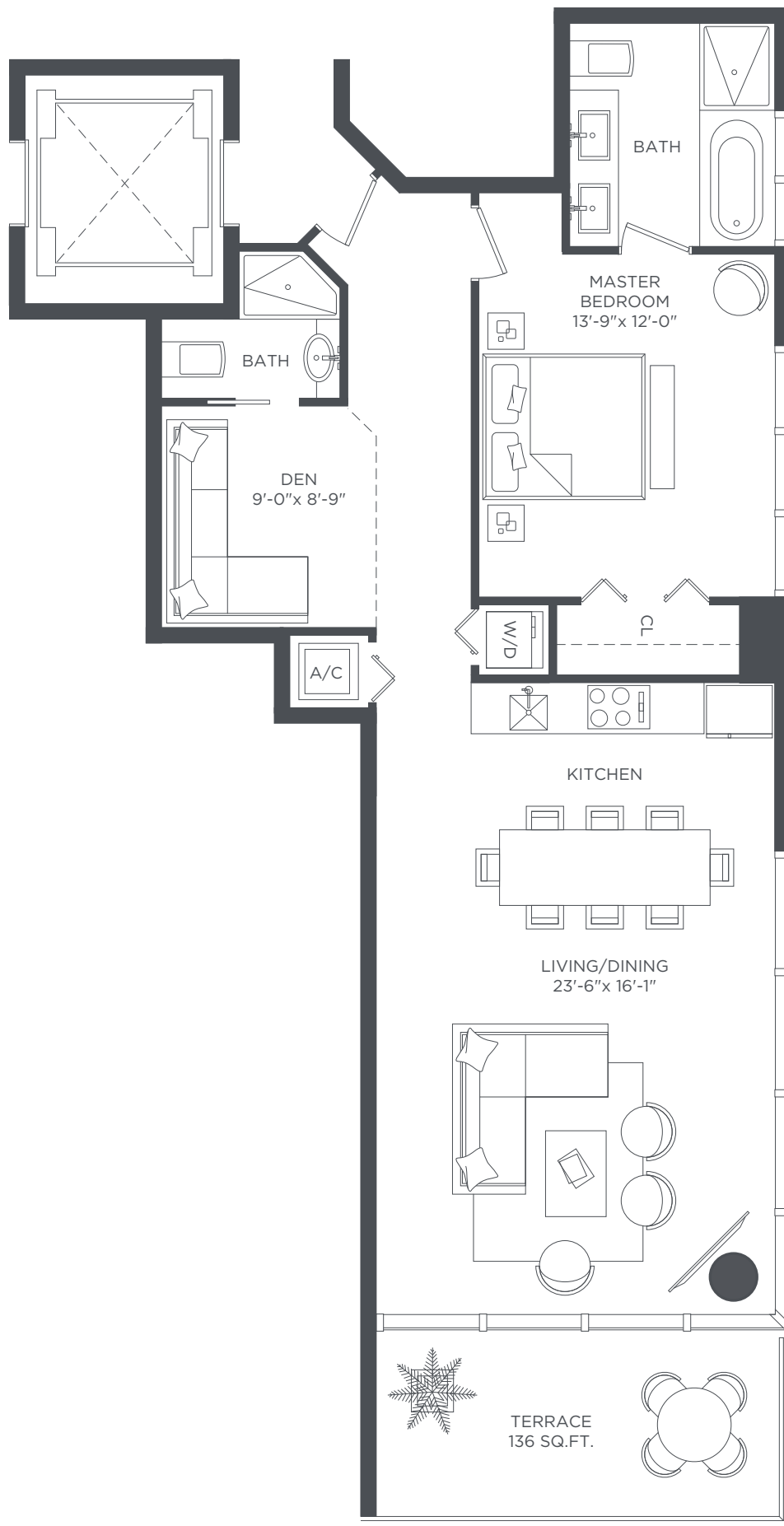
RESIDENCE 06

2 BEDROOMS 2 BATHS + DEN

A/C INTERIOR AREA	1,244 SQ.FT.	115.57 SQ.M.
TERRACE AREA	219 SQ.FT.	20.34 SQ.M.
TOTAL RESIDENCE	1,463 SQ.FT.	135.91 SQ.M.



Stated dimensions are measured to the exterior boundaries of the exterior walls and the centerline of interior demising walls and in fact vary from the dimensions that would be determined by using the description and definition of the "Unit" set forth in the Declaration (which generally only includes the interior airspace between the perimeter walls and excludes interior structural components). For your reference, the area of the Unit, determined in accordance with those defined unit boundaries, is + or - 1,058 sq. ft. for units 06. Note that measurements of rooms set forth on this floor plan are generally taken at the greatest points of each given room (as if the room were a perfect rectangle), without regard for any cutouts. Accordingly, the area of the actual room will typically be smaller than the product obtained by multiplying the stated length times width. All dimensions are approximate and may vary with actual construction, and all floor plans and development plans are subject to change.



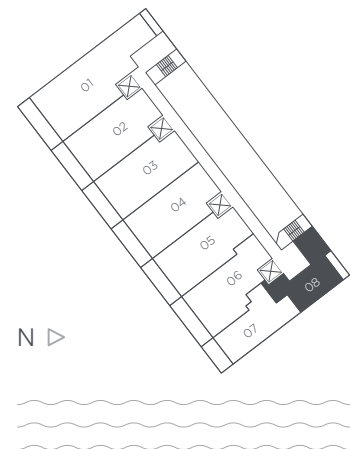
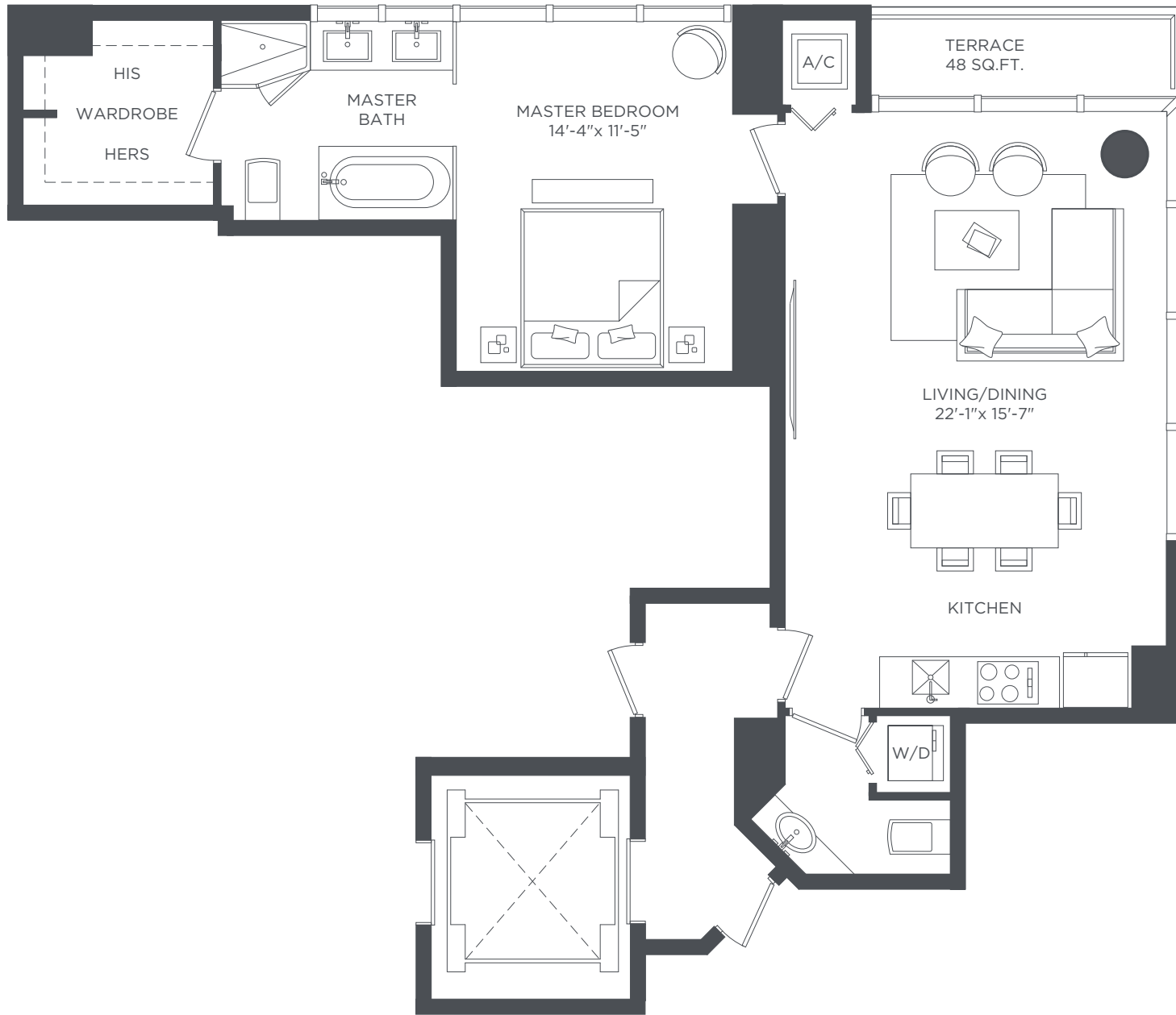
RESIDENCE 07

1 BEDROOM 2 BATHS + DEN

A/C INTERIOR AREA	1,004 SQ.FT.	93.27 SQ.M.
TERRACE AREA	136 SQ.FT.	12.63 SQ.M.
TOTAL RESIDENCE	1,140 SQ.FT.	105.90 SQ.M.



Stated dimensions are measured to the exterior boundaries of the exterior walls and the centerline of interior demising walls and in fact vary from the dimensions that would be determined by using the description and definition of the "Unit" set forth in the Declaration (which generally only includes the interior airspace between the perimeter walls and excludes interior structural components). For your reference, the area of the Unit, determined in accordance with those defined unit boundaries, is + or - 918 sq. ft. for units 07. Note that measurements of rooms set forth on this floor plan are generally taken at the greatest points of each given room (as if the room were a perfect rectangle), without regard for any cutouts. Accordingly, the area of the actual room will typically be smaller than the product obtained by multiplying the stated length times width. All dimensions are approximate and may vary with actual construction, and all floor plans and development plans are subject to change.



RESIDENCE 08

1 BEDROOM 1 1/2 BATHS + DEN

A/C INTERIOR AREA	919 SQ.FT.	85.37 SQ.M.
TERRACE AREA	48 SQ.FT.	4.45 SQ.M.
TOTAL RESIDENCE	967 SQ.FT.	89.82 SQ.M.



Stated dimensions are measured to the exterior boundaries of the exterior walls and the centerline of interior demising walls and in fact vary from the dimensions that would be determined by using the description and definition of the "Unit" set forth in the Declaration (which generally only includes the interior airspace between the perimeter walls and excludes interior structural components). For your reference, the area of the Unit, determined in accordance with those defined unit boundaries, is + or - 743 sq. ft. for units 07 Note that measurements of rooms set forth on this floor plan are generally taken at the greatest points of each given room (as if the room were a perfect rectangle), without regard for any cutouts. Accordingly, the area of the actual room will typically be smaller than the product obtained by multiplying the stated length times width. All dimensions are approximate and may vary with actual construction, and all floor plans and development plans are subject to change.