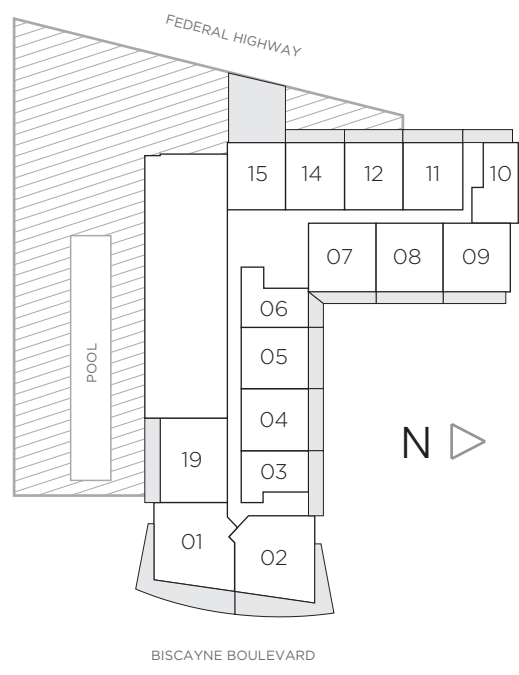
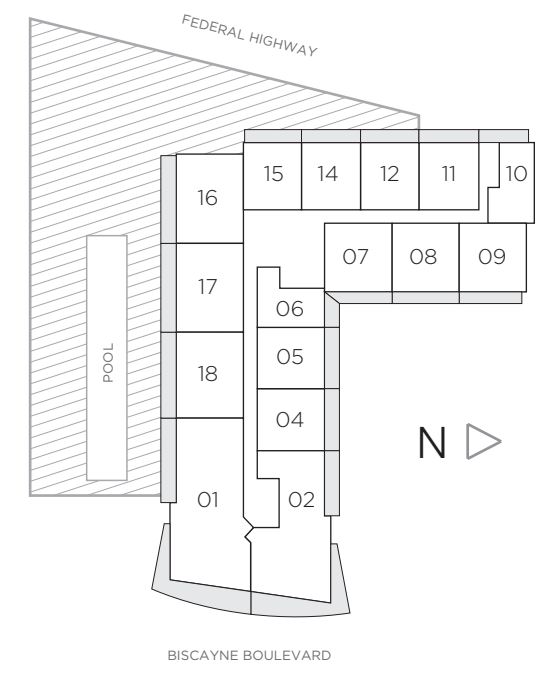


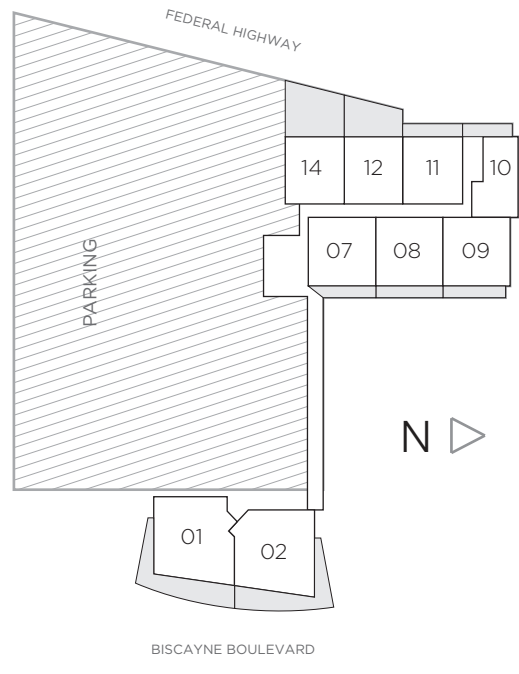
3RD AND 4TH



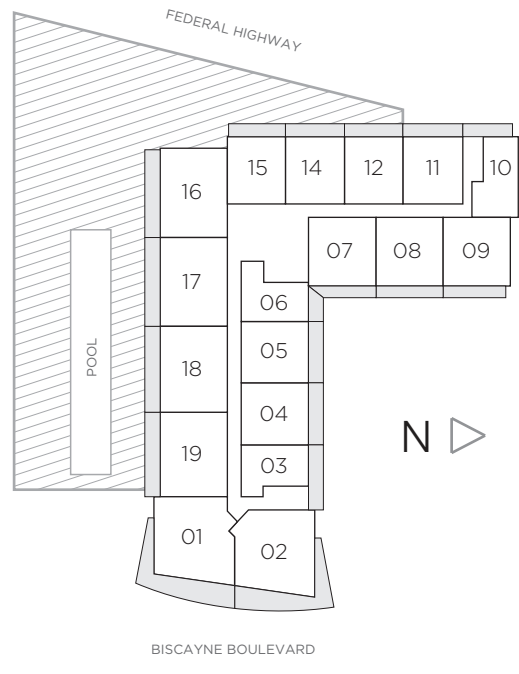
7TH



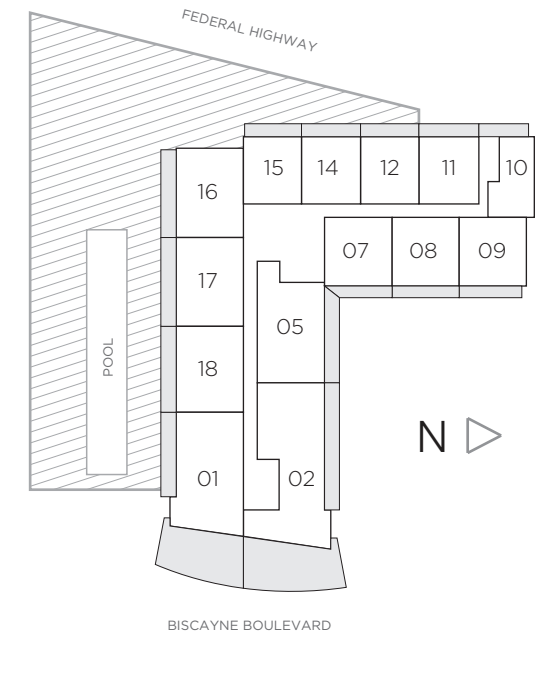
14TH



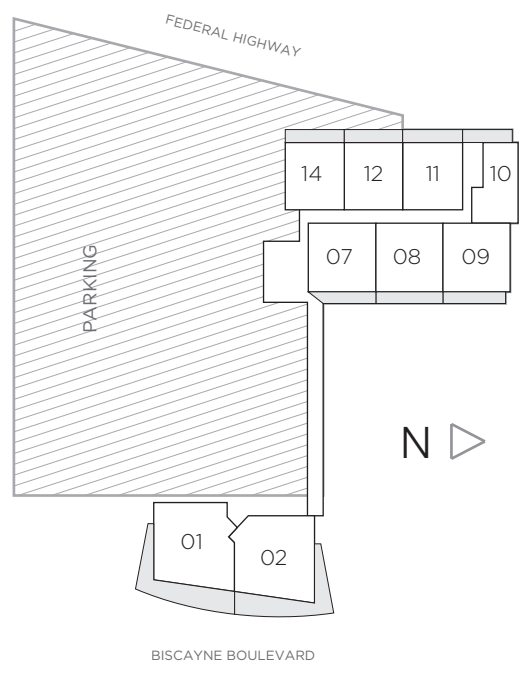
5TH



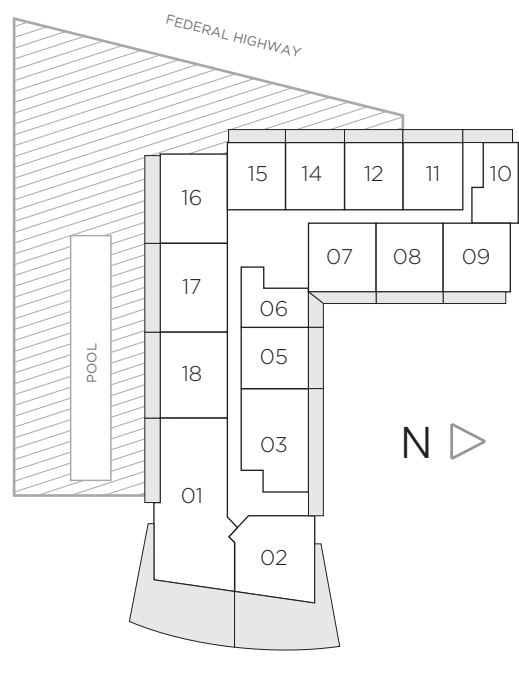
8TH TO 11TH



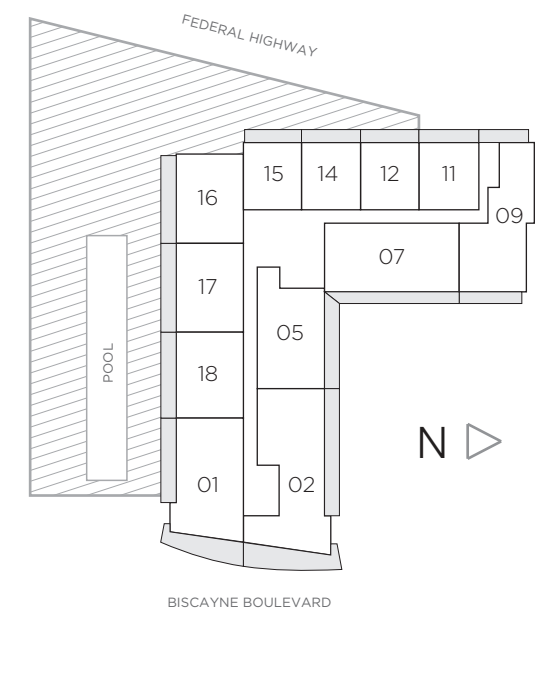
15TH



6TH



12TH



16TH

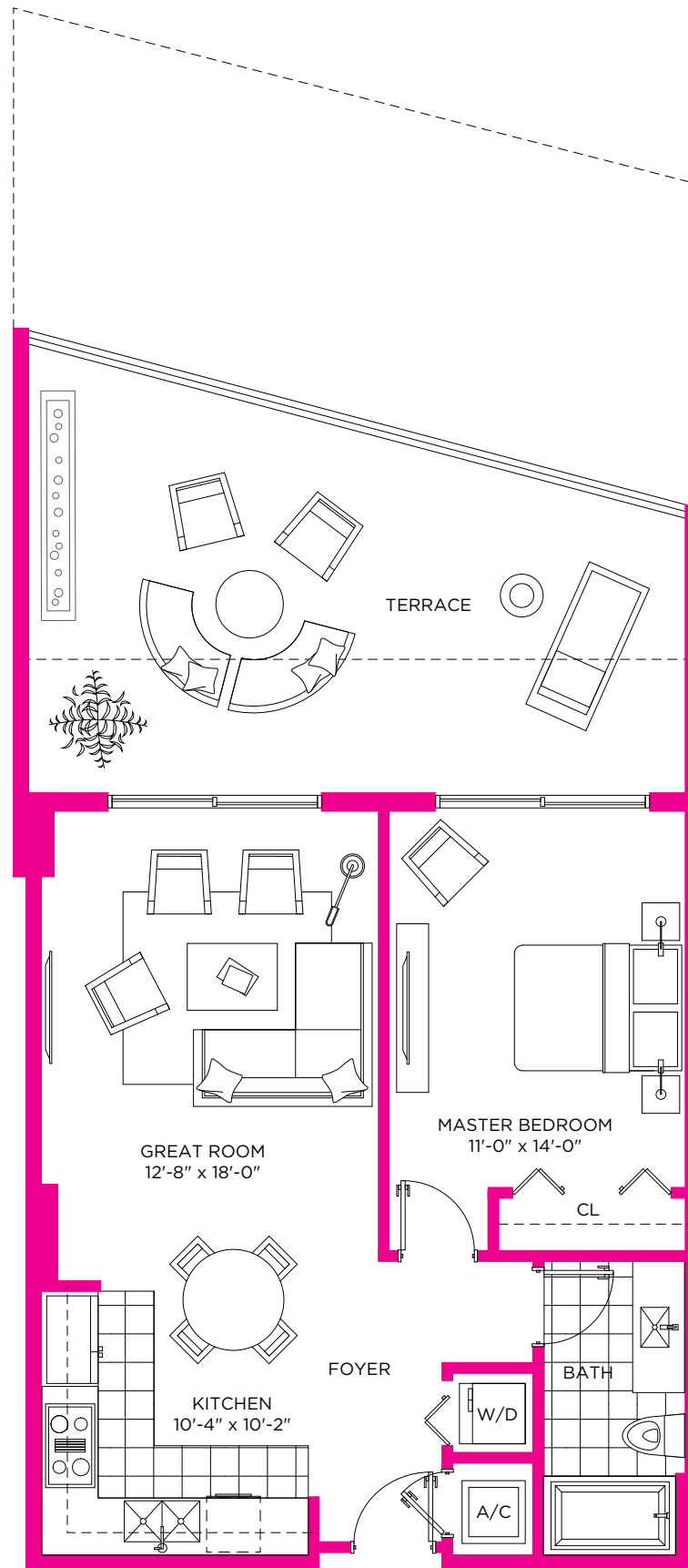
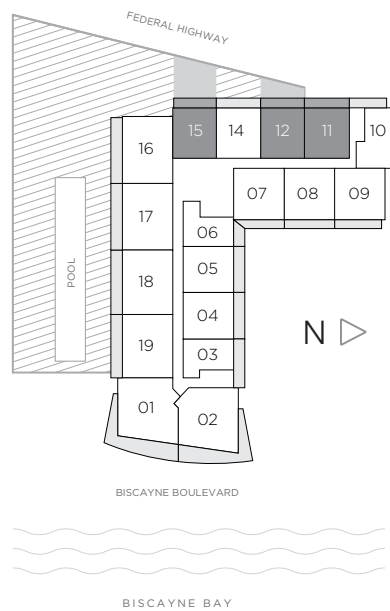
RESIDENCE 11, 12, 15

1 BEDROOM / 1 BATH

RESIDENCE 11 / FLOORS 5 TO 16

RESIDENCE 12 / FLOORS 6 TO 16

RESIDENCE 15 / FLOORS 8 TO 16



RESIDENCE 15 / FLOOR 7
634 SQ.FT.

RESIDENCE 12 / FLOOR 5
340 SQ.FT.

RESIDENCE 11
122 SQ.FT.

A/C INTERIOR AREA	700 SQ.FT.	65.03 SQ.M.
TERRACE	340 SQ.FT.	31.58 SQ.M.
TOTAL RESIDENCE	1040 SQ.FT.	96.61 SQ.M.

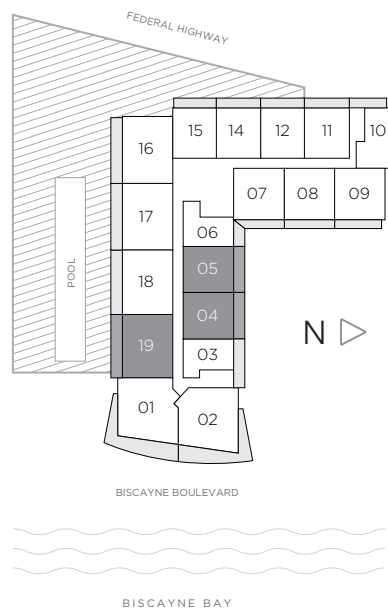
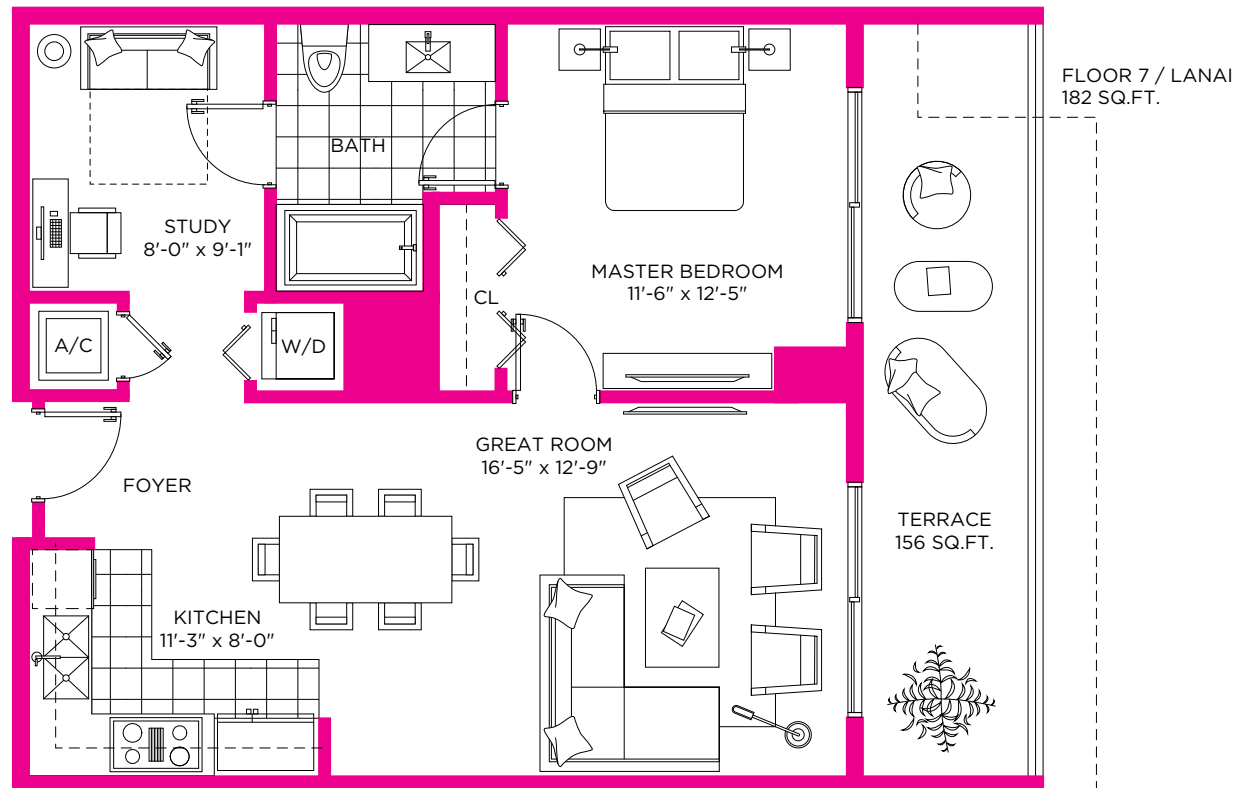
Stated dimensions are measured to the exterior boundaries of the exterior walls and the centerline of interior demising walls and in fact vary from the dimensions that would be determined by using the description and definition of the "Unit" set forth in the Declaration (which generally only includes the interior airspace between the perimeter walls and excludes interior structural components). For your reference, the area of the Unit, determined in accordance with those defined unit boundaries, is + or - 1,305 sq. ft. for units 01 Note that measurements of rooms set forth on this floor plan are generally taken at the greatest points of each given room (as if the room were a perfect rectangle), without regard for any cutouts. Accordingly, the area of the actual room will typically be smaller than the product obtained by multiplying the stated length times width. All dimensions are approximate and may vary with actual construction, and all floor plans and development plans are subject to change.

RESIDENCE 04, 05, 19

1 BEDROOM / 1 BATH + DEN

RESIDENCES 04, 05 / FLOORS 7 TO 14

RESIDENCE 19 / FLOOR 7



A/C INTERIOR AREA	740 SQ.FT.	68.74 SQ.M.
TERRACE	156 SQ.FT.	14.49 SQ.M.
TOTAL RESIDENCE	896 SQ.FT.	83.24 SQ.M.

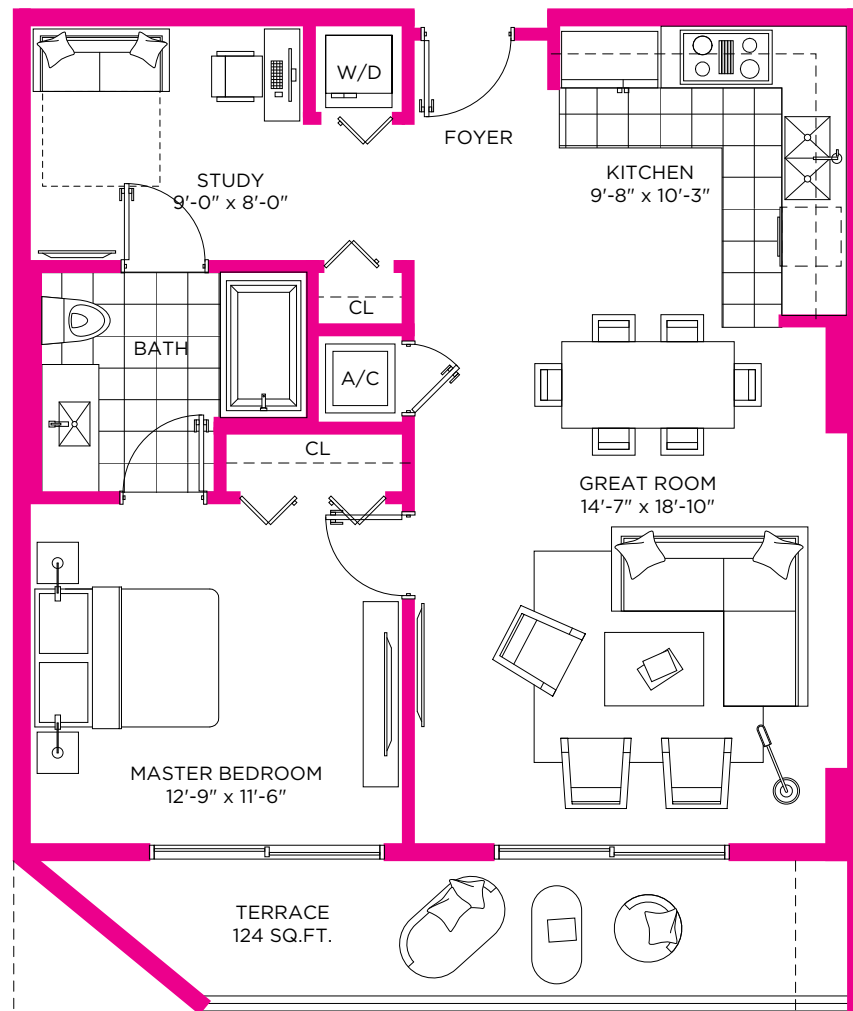
Stated dimensions are measured to the exterior boundaries of the exterior walls and the centerline of interior demising walls and in fact vary from the dimensions that would be determined by using the description and definition of the "Unit" set forth in the Declaration (which generally only includes the interior airspace between the perimeter walls and excludes interior structural components). For your reference, the area of the Unit, determined in accordance with those defined unit boundaries, is + or - 1,305 sq. ft. for units 01 Note that measurements of rooms set forth on this floor plan are generally taken at the greatest points of each given room (as if the room were a perfect rectangle), without regard for any cutouts. Accordingly, the area of the actual room will typically be smaller than the product obtained by multiplying the stated length times width. All dimensions are approximate and may vary with actual construction, and all floor plans and development plans are subject to change.

RESIDENCE 07, 08, 09

1 BEDROOM / 1 BATH + DEN

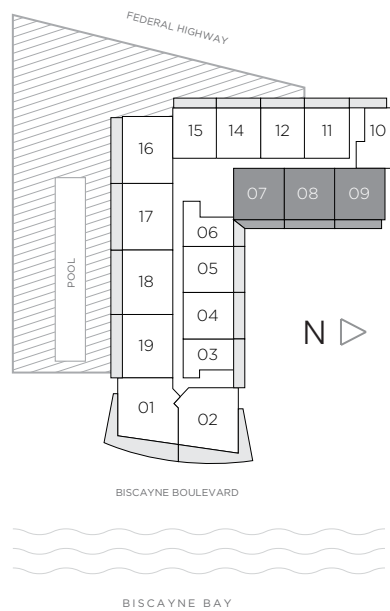
RESIDENCE 07 / FLOORS 7 TO 15

RESIDENCES 08, 09 / FLOORS 5 TO 15



RESIDENCE 08
139 SQ.FT.

RESIDENCE 09
133 SQ.FT.



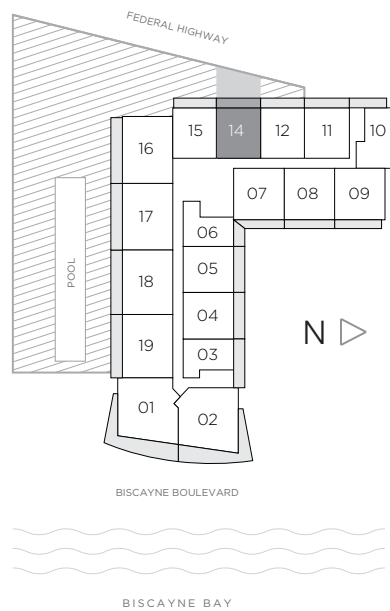
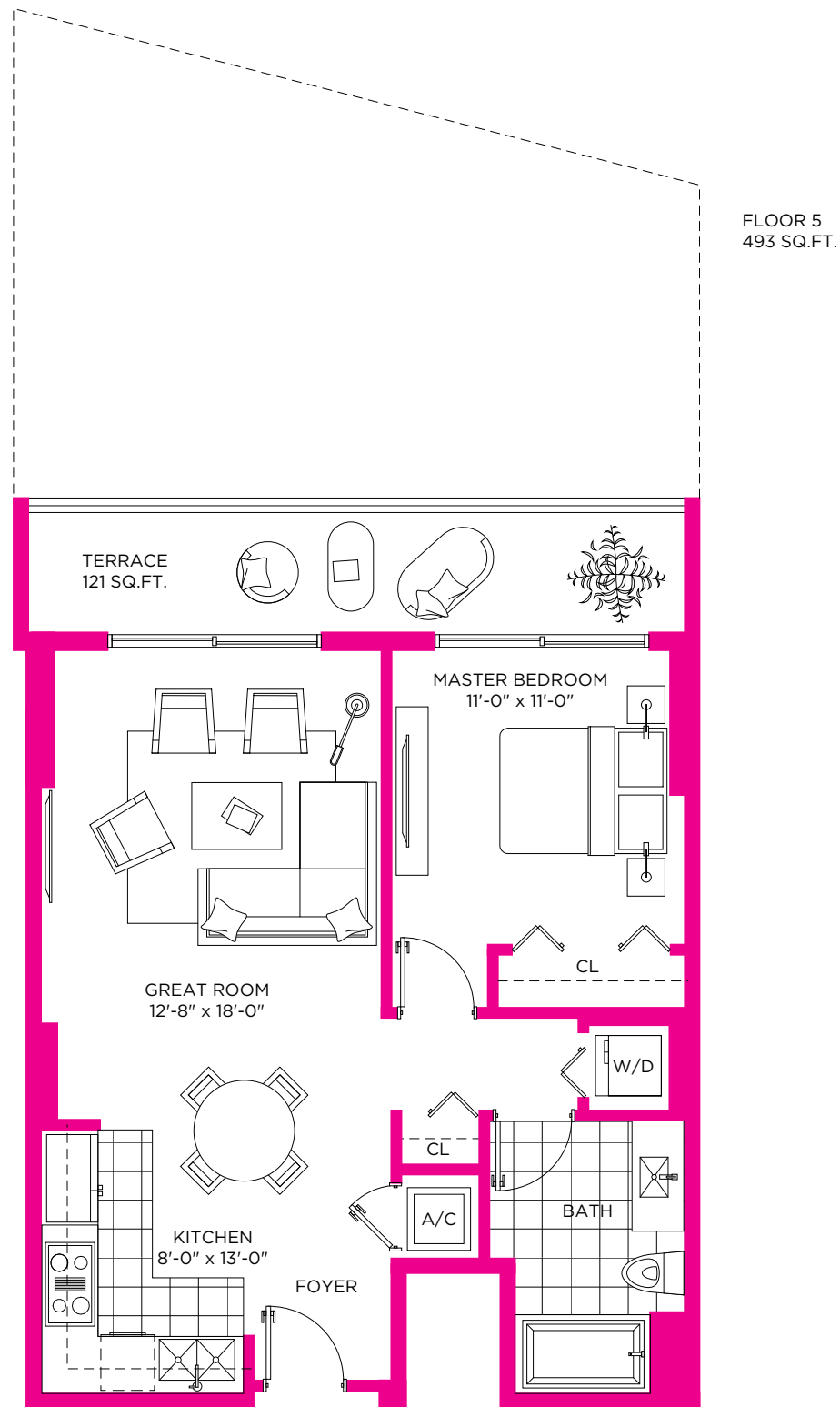
A/C INTERIOR AREA	790 SQ.FT.	73.39 SQ.M.
TERRACE	124 SQ.FT.	11.52 SQ.M.
TOTAL RESIDENCE	914 SQ.FT.	84.91 SQ.M.

Stated dimensions are measured to the exterior boundaries of the exterior walls and the centerline of interior demising walls and in fact vary from the dimensions that would be determined by using the description and definition of the "Unit" set forth in the Declaration (which generally only includes the interior airspace between the perimeter walls and excludes interior structural components). For your reference, the area of the Unit, determined in accordance with those defined unit boundaries, is + or - 1,305 sq. ft. for units 01 Note that measurements of rooms set forth on this floor plan are generally taken at the greatest points of each given room (as if the room were a perfect rectangle), without regard for any cutouts. Accordingly, the area of the actual room will typically be smaller than the product obtained by multiplying the stated length times width. All dimensions are approximate and may vary with actual construction, and all floor plans and development plans are subject to change.

RESIDENCE 14

1 BEDROOM / 1 BATH

RESIDENCE 14 / FLOORS 5 TO 16



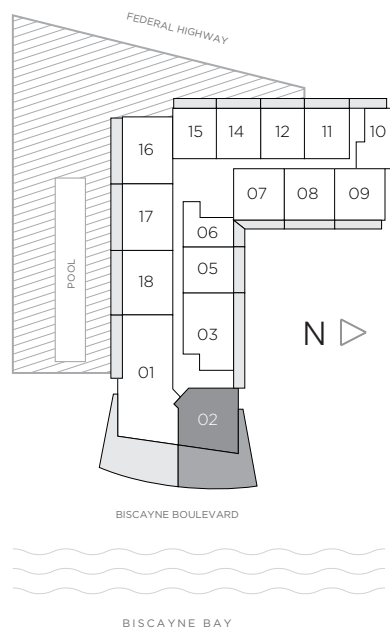
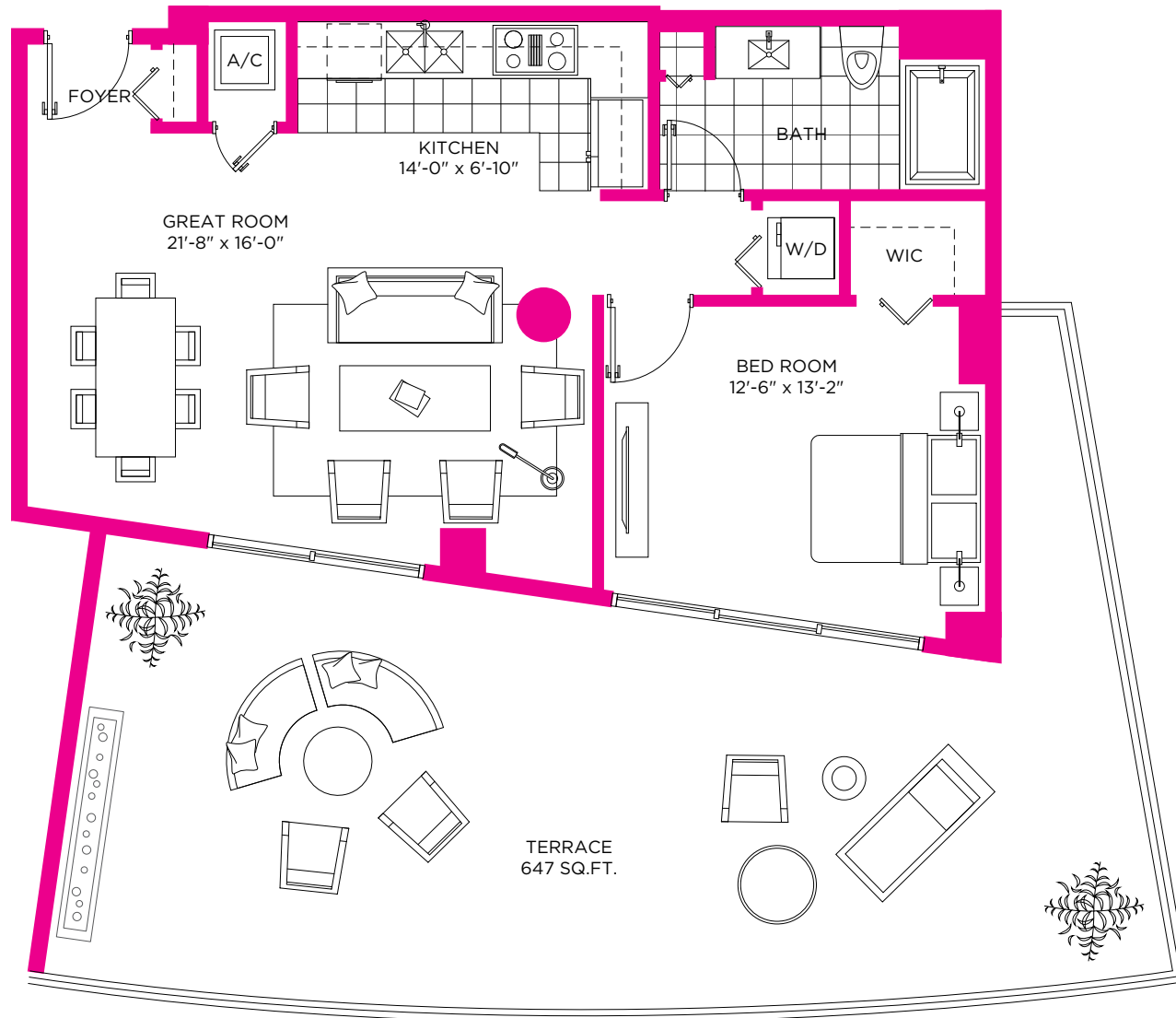
A/C INTERIOR AREA	680 SQ.FT.	63.17 SQ.M.
TERRACE	121 SQ.FT.	11.24 SQ.M.
TOTAL RESIDENCE	801 SQ.FT.	74.41 SQ.M.

Stated dimensions are measured to the exterior boundaries of the exterior walls and the centerline of interior demising walls and in fact vary from the dimensions that would be determined by using the description and definition of the "Unit" set forth in the Declaration (which generally only includes the interior airspace between the perimeter walls and excludes interior structural components). For your reference, the area of the Unit, determined in accordance with those defined unit boundaries, is + or - 1,305 sq. ft. for units 01 Note that measurements of rooms set forth on this floor plan are generally taken at the greatest points of each given room (as if the room were a perfect rectangle), without regard for any cutouts. Accordingly, the area of the actual room will typically be smaller than the product obtained by multiplying the stated length times width. All dimensions are approximate and may vary with actual construction, and all floor plans and development plans are subject to change.

RESIDENCE 02

1 BEDROOM / 1 BATH

RESIDENCE 02 / FLOOR 12



A/C INTERIOR AREA	800 SQ.FT.	74.32 SQ.M.
TERRACE	647 SQ.FT.	60.10 SQ.M.
TOTAL RESIDENCE	1447 SQ.FT.	134.43 SQ.M.

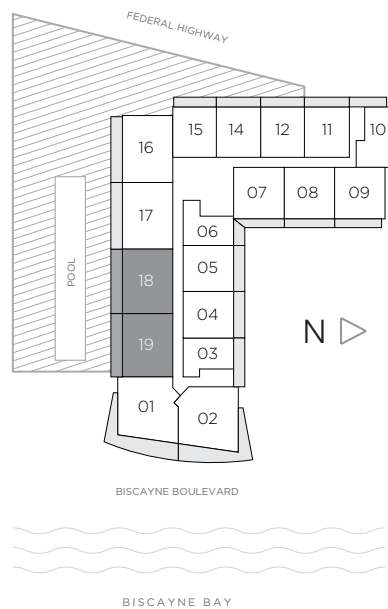
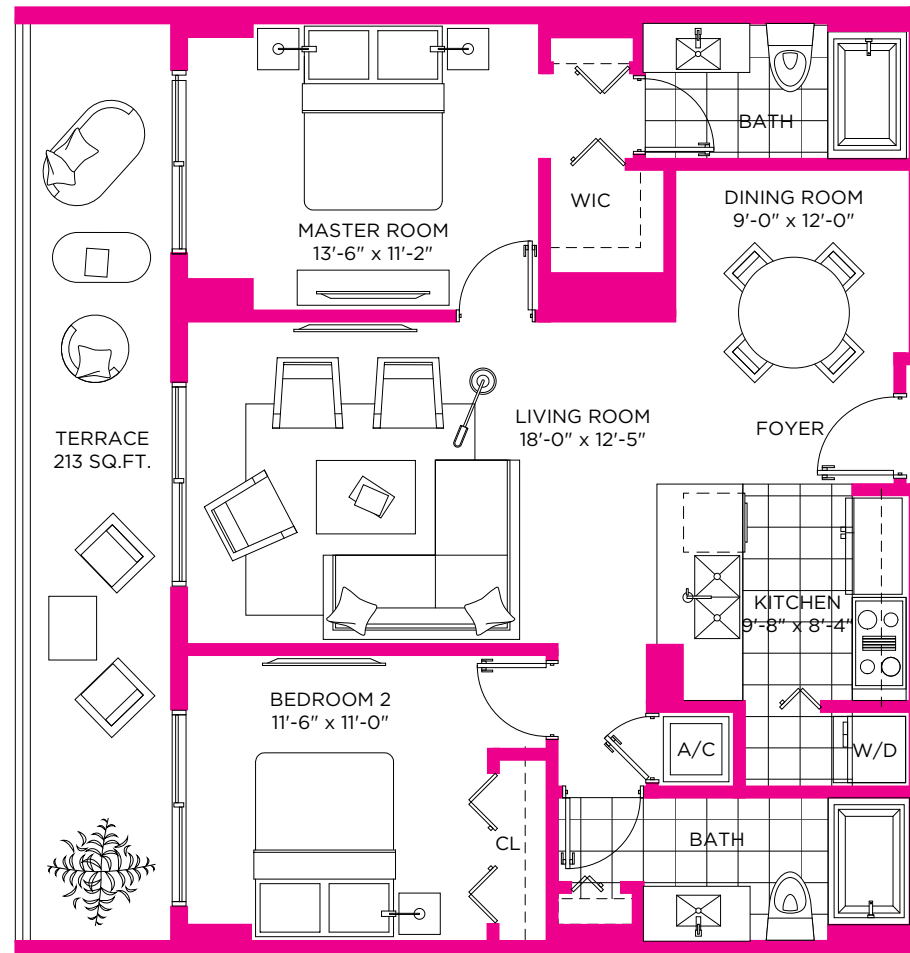
Stated dimensions are measured to the exterior boundaries of the exterior walls and the centerline of interior demising walls and in fact vary from the dimensions that would be determined by using the description and definition of the "Unit" set forth in the Declaration (which generally only includes the interior airspace between the perimeter walls and excludes interior structural components). For your reference, the area of the Unit, determined in accordance with those defined unit boundaries, is + or - 1,305 sq. ft. for units 01. Note that measurements of rooms set forth on this floor plan are generally taken at the greatest points of each given room (as if the room were a perfect rectangle), without regard for any cutouts. Accordingly, the area of the actual room will typically be smaller than the product obtained by multiplying the stated length times width. All dimensions are approximate and may vary with actual construction, and all floor plans and development plans are subject to change.

RESIDENCE 18, 19

2 BEDROOMS / 2 BATHS

RESIDENCE 18 / FLOORS 8 TO 16

RESIDENCE 19 / FLOORS 8 TO 11



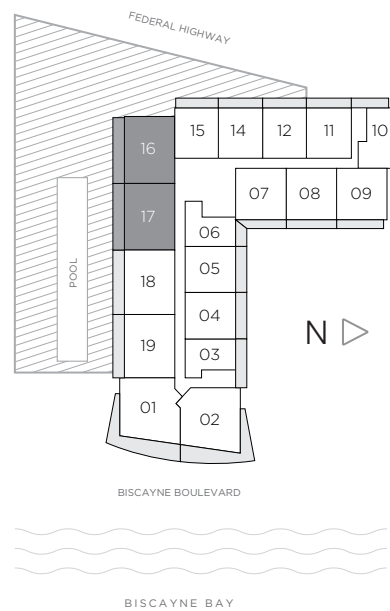
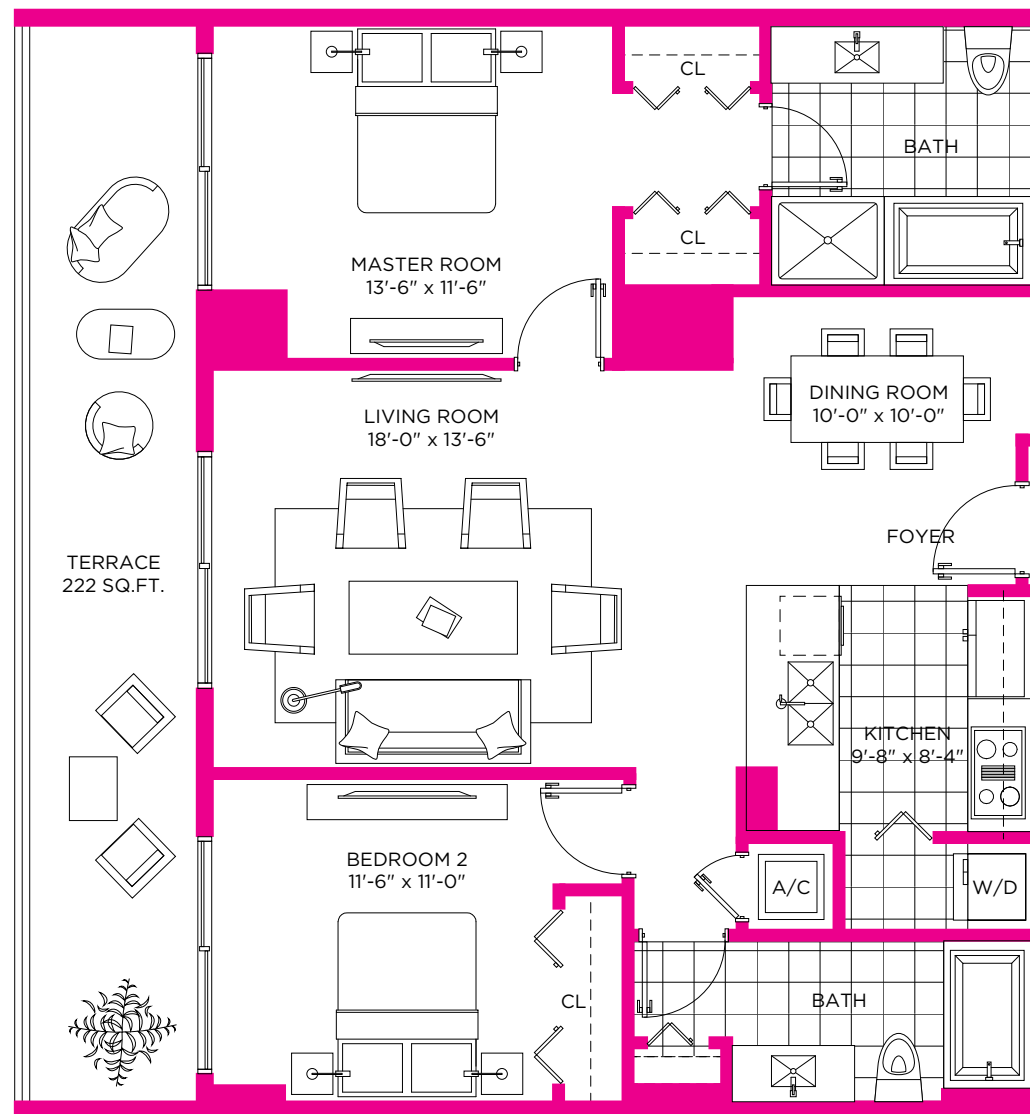
A/C INTERIOR AREA	1020 SQ.FT.	94.76 SQ.M.
TERRACE	213 SQ.FT.	19.78 SQ.M.
TOTAL RESIDENCE	1233 SQ.FT.	114.54 SQ.M.

Stated dimensions are measured to the exterior boundaries of the exterior walls and the centerline of interior demising walls and in fact vary from the dimensions that would be determined by using the description and definition of the "Unit" set forth in the Declaration (which generally only includes the interior airspace between the perimeter walls and excludes interior structural components). For your reference, the area of the Unit, determined in accordance with those defined unit boundaries, is + or - 1,305 sq. ft. for units 01 Note that measurements of rooms set forth on this floor plan are generally taken at the greatest points of each given room (as if the room were a perfect rectangle), without regard for any cutouts. Accordingly, the area of the actual room will typically be smaller than the product obtained by multiplying the stated length times width. All dimensions are approximate and may vary with actual construction, and all floor plans and development plans are subject to change.

RESIDENCE 16, 17

2 BEDROOMS / 2 BATHS

RESIDENCES 16, 17 / FLOORS 8 TO 16



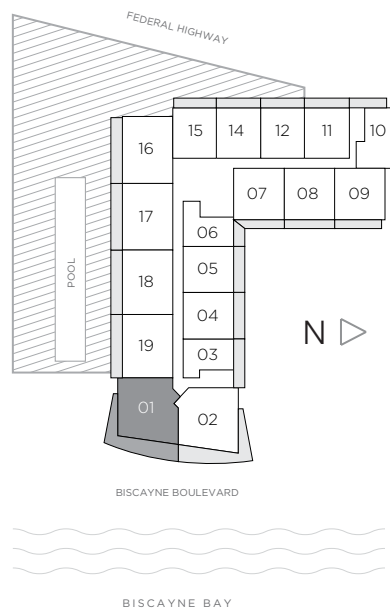
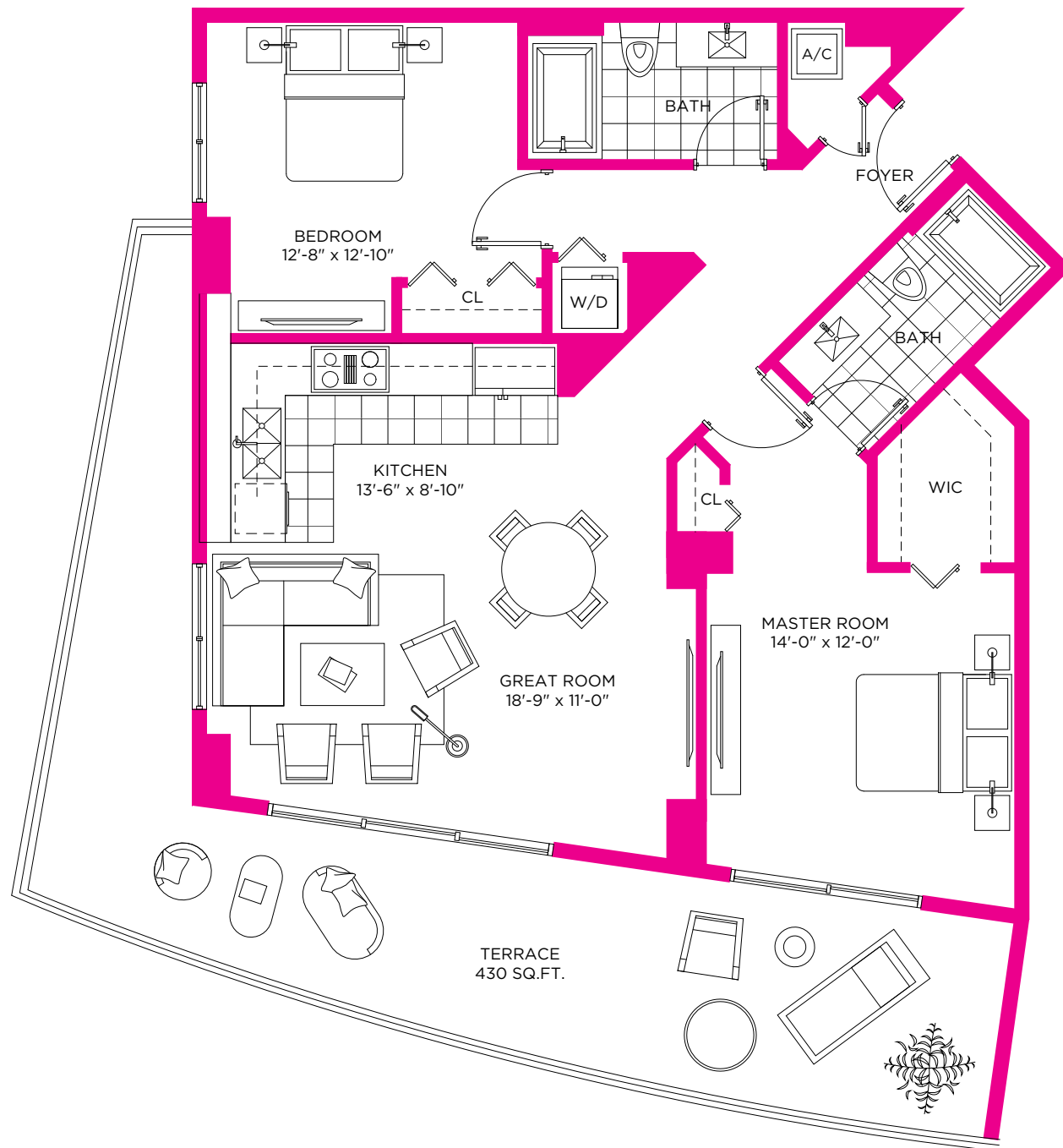
A/C INTERIOR AREA	1060 SQ.FT.	98.47 SQ.M.
TERRACE	222 SQ.FT.	20.62 SQ.M.
TOTAL RESIDENCE	1282 SQ.FT.	119.10 SQ.M.

Stated dimensions are measured to the exterior boundaries of the exterior walls and the centerline of interior demising walls and in fact vary from the dimensions that would be determined by using the description and definition of the "Unit" set forth in the Declaration (which generally only includes the interior airspace between the perimeter walls and excludes interior structural components). For your reference, the area of the Unit, determined in accordance with those defined unit boundaries, is + or - 1,305 sq. ft. for units 01 Note that measurements of rooms set forth on this floor plan are generally taken at the greatest points of each given room (as if the room were a perfect rectangle), without regard for any cutouts. Accordingly, the area of the actual room will typically be smaller than the product obtained by multiplying the stated length times width. All dimensions are approximate and may vary with actual construction, and all floor plans and development plans are subject to change.

RESIDENCE 01

2 BEDROOMS / 2 BATHS

RESIDENCE 01 / FLOORS 3 TO 11



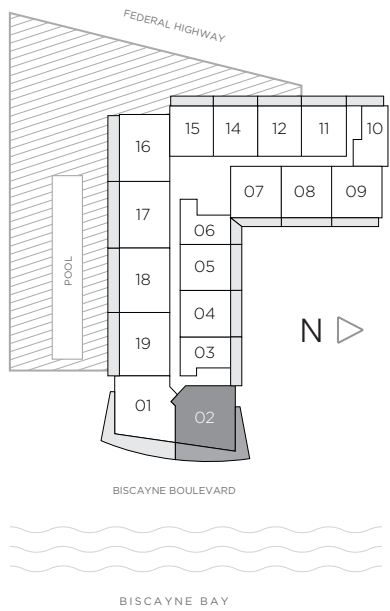
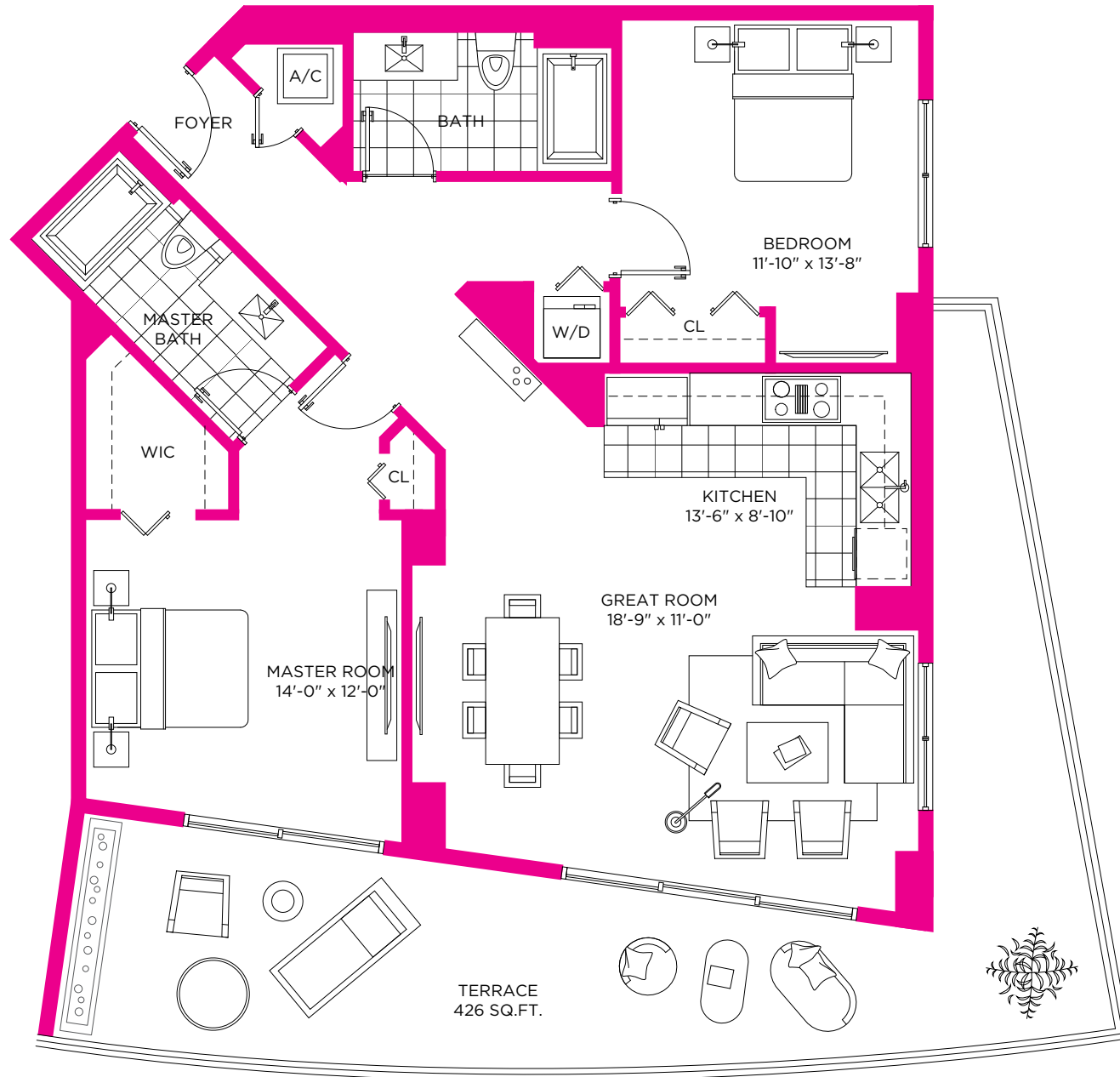
A/C INTERIOR AREA	1160 SQ.FT.	107.76 SQ.M.
TERRACE	430 SQ.FT.	39.94 SQ.M.
TOTAL RESIDENCE	1590 SQ.FT.	147.71 SQ.M.

Stated dimensions are measured to the exterior boundaries of the exterior walls and the centerline of interior demising walls and in fact vary from the dimensions that would be determined by using the description and definition of the "Unit" set forth in the Declaration (which generally only includes the interior airspace between the perimeter walls and excludes interior structural components). For your reference, the area of the Unit, determined in accordance with those defined unit boundaries, is + or - 1,305 sq. ft. for units 01. Note that measurements of rooms set forth on this floor plan are generally taken at the greatest points of each given room (as if the room were a perfect rectangle), without regard for any cutouts. Accordingly, the area of the actual room will typically be smaller than the product obtained by multiplying the stated length times width. All dimensions are approximate and may vary with actual construction, and all floor plans and development plans are subject to change.

RESIDENCE 02

2 BEDROOMS / 2 BATHS

RESIDENCE 02 / FLOORS 3 TO 11



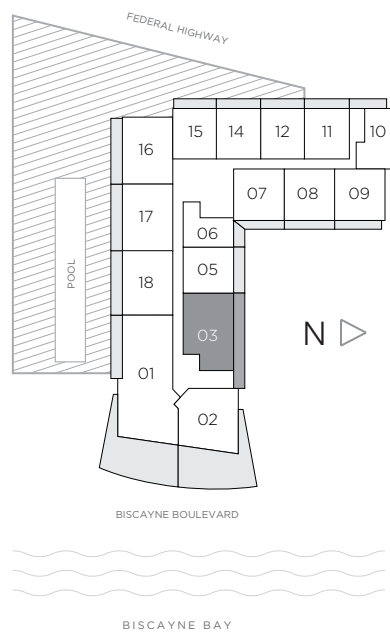
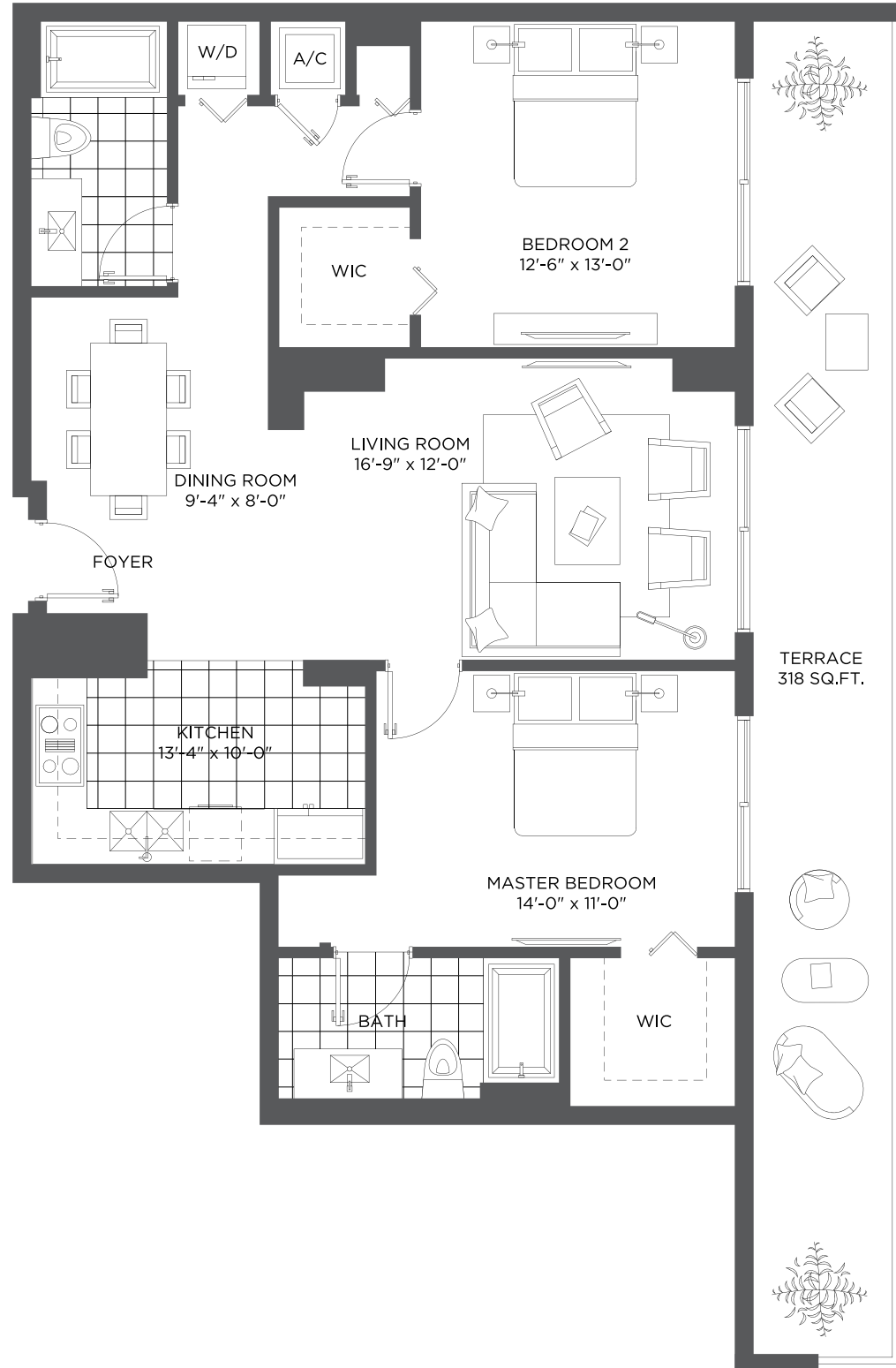
A/C INTERIOR AREA	1150 SQ.FT.	106.83 SQ.M.
TERRACE	426 SQ.FT.	39.57 SQ.M.
TOTAL RESIDENCE	1576 SQ.FT.	146.41 SQ.M.

Stated dimensions are measured to the exterior boundaries of the exterior walls and the centerline of interior demising walls and in fact vary from the dimensions that would be determined by using the description and definition of the "Unit" set forth in the Declaration (which generally only includes the interior airspace between the perimeter walls and excludes interior structural components). For your reference, the area of the Unit, determined in accordance with those defined unit boundaries, is + or - 1,305 sq. ft. for units 01 Note that measurements of rooms set forth on this floor plan are generally taken at the greatest points of each given room (as if the room were a perfect rectangle), without regard for any cutouts. Accordingly, the area of the actual room will typically be smaller than the product obtained by multiplying the stated length times width. All dimensions are approximate and may vary with actual construction, and all floor plans and development plans are subject to change.

RESIDENCE 03

2 BEDROOMS / 2 BATHS

RESIDENCE 03 / FLOOR 12



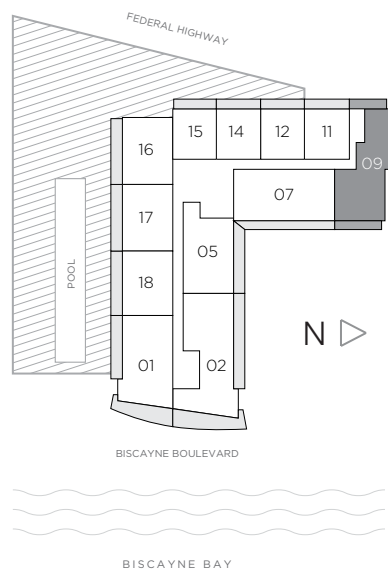
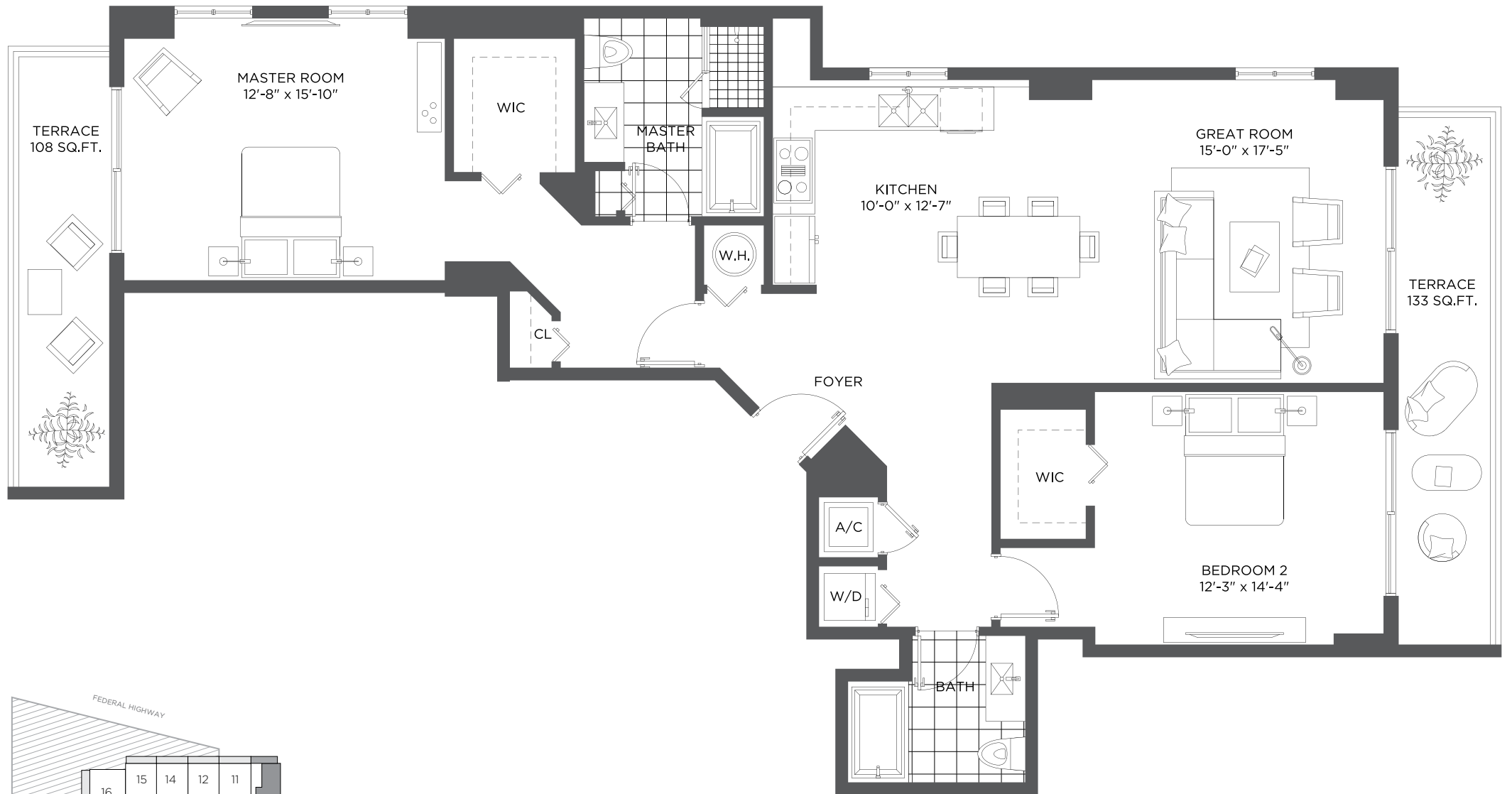
A/C INTERIOR AREA	1130 SQ.FT.	104.98 SQ.M.
TERRACE	318 SQ.FT.	29.54 SQ.M.
TOTAL RESIDENCE	1448 SQ.FT.	134.52 SQ.M.

Stated dimensions are measured to the exterior boundaries of the exterior walls and the centerline of interior demising walls and in fact vary from the dimensions that would be determined by using the description and definition of the "Unit" set forth in the Declaration (which generally only includes the interior airspace between the perimeter walls and excludes interior structural components). For your reference, the area of the Unit, determined in accordance with those defined unit boundaries, is + or - 1,305 sq. ft. for units 01. Note that measurements of rooms set forth on this floor plan are generally taken at the greatest points of each given room (as if the room were a perfect rectangle), without regard for any cutouts. Accordingly, the area of the actual room will typically be smaller than the product obtained by multiplying the stated length times width. All dimensions are approximate and may vary with actual construction, and all floor plans and development plans are subject to change.

RESIDENCE 09

2 BEDROOMS / 2 BATHS

RESIDENCE 09 / FLOOR 16



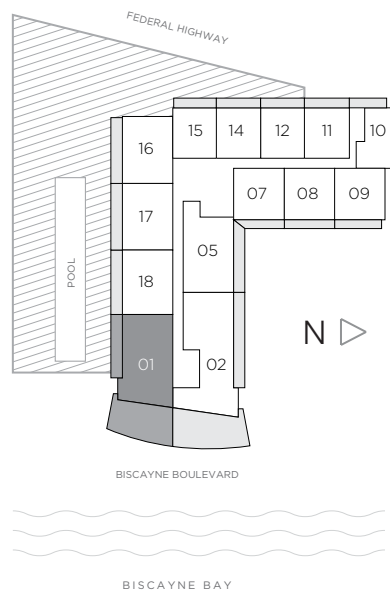
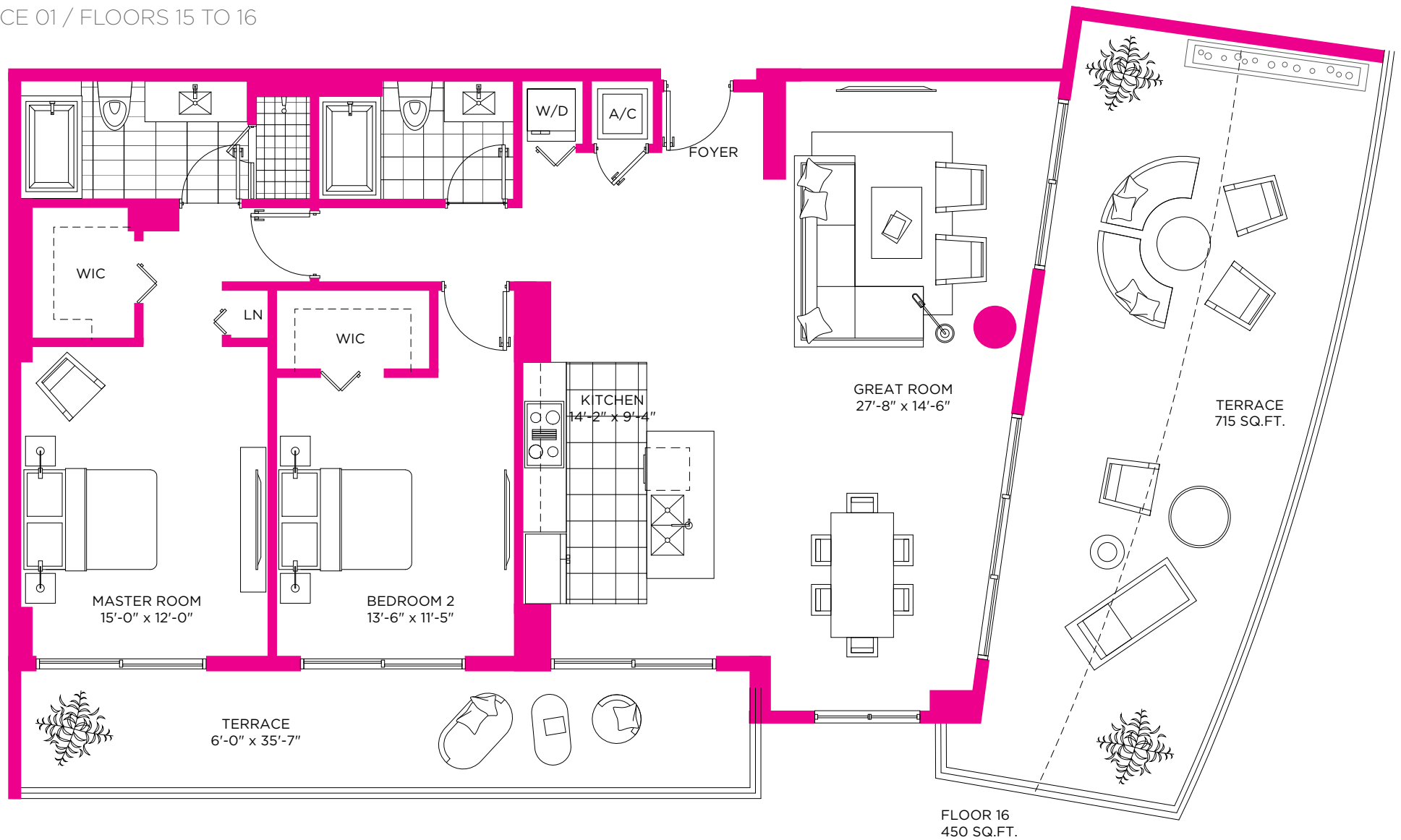
A/C INTERIOR AREA	1430 SQ.FT.	132.85 SQ.M.
TERRACE	241 SQ.FT.	22.38 SQ.M.
TOTAL RESIDENCE	1671 SQ.FT.	155.24 SQ.M.

Stated dimensions are measured to the exterior boundaries of the exterior walls and the centerline of interior demising walls and in fact vary from the dimensions that would be determined by using the description and definition of the "Unit" set forth in the Declaration (which generally only includes the interior airspace between the perimeter walls and excludes interior structural components). For your reference, the area of the Unit, determined in accordance with those defined unit boundaries, is + or - 1,305 sq. ft. for units 01 Note that measurements of rooms set forth on this floor plan are generally taken at the greatest points of each given room (as if the room were a perfect rectangle), without regard for any cutouts. Accordingly, the area of the actual room will typically be smaller than the product obtained by multiplying the stated length times width. All dimensions are approximate and may vary with actual construction, and all floor plans and development plans are subject to change.

RESIDENCE 01

2 BEDROOMS / 2 BATHS

RESIDENCE 01 / FLOORS 15 TO 16



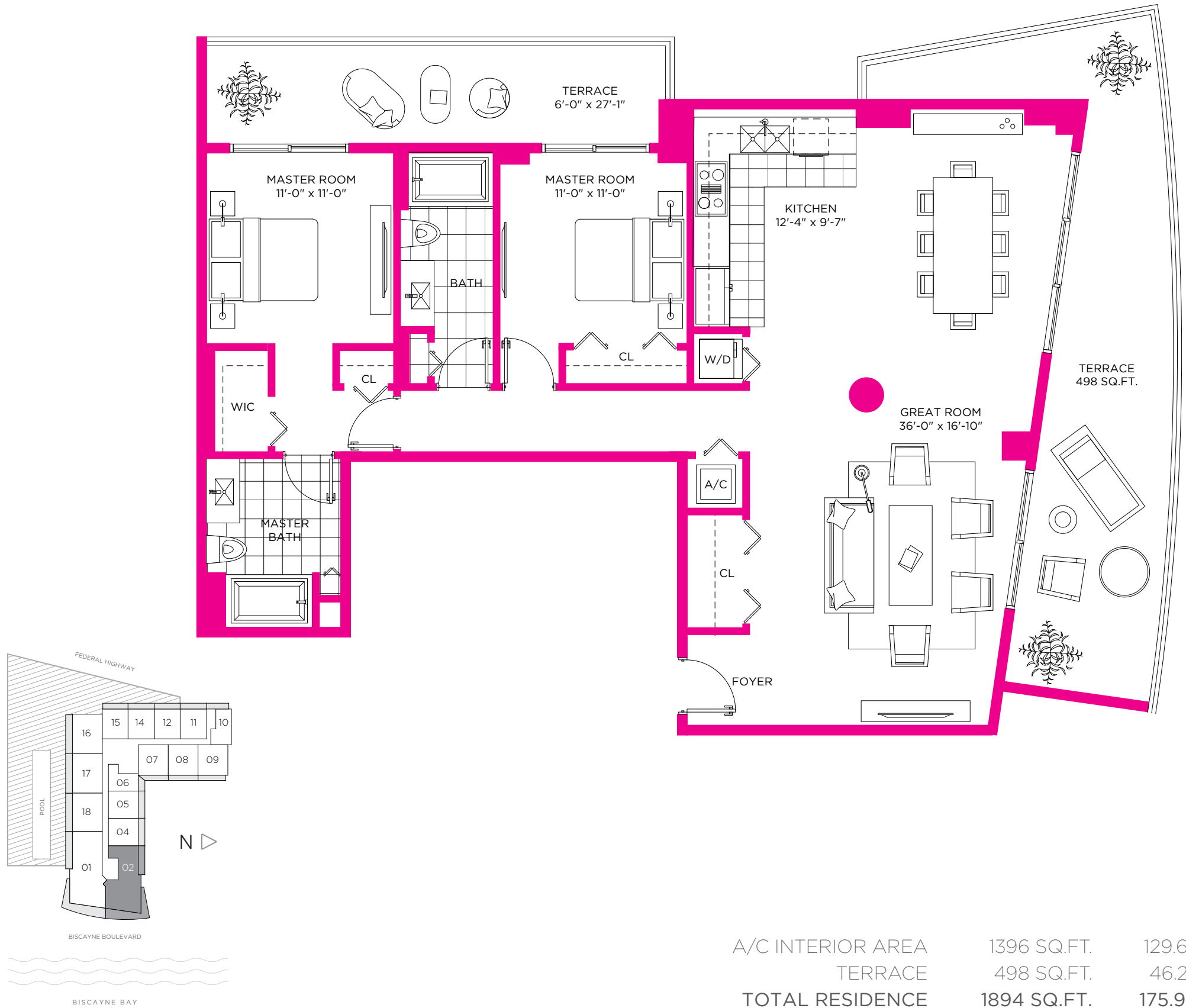
A/C INTERIOR AREA	1420 SQ.FT.	131.92 SQ.M.
TERRACE	715 SQ.FT.	66.42 SQ.M.
TOTAL RESIDENCE	2135 SQ.FT.	198.34 SQ.M.

Stated dimensions are measured to the exterior boundaries of the exterior walls and the centerline of interior demising walls and in fact vary from the dimensions that would be determined by using the description and definition of the "Unit" set forth in the Declaration (which generally only includes the interior airspace between the perimeter walls and excludes interior structural components). For your reference, the area of the Unit, determined in accordance with those defined unit boundaries, is + or - 1,305 sq. ft. for units 01. Note that measurements of rooms set forth on this floor plan are generally taken at the greatest points of each given room (as if the room were a perfect rectangle), without regard for any cutouts. Accordingly, the area of the actual room will typically be smaller than the product obtained by multiplying the stated length times width. All dimensions are approximate and may vary with actual construction, and all floor plans and development plans are subject to change.

RESIDENCE 02

2 BEDROOMS / 2 BATHS

RESIDENCE 02 / FLOOR 14

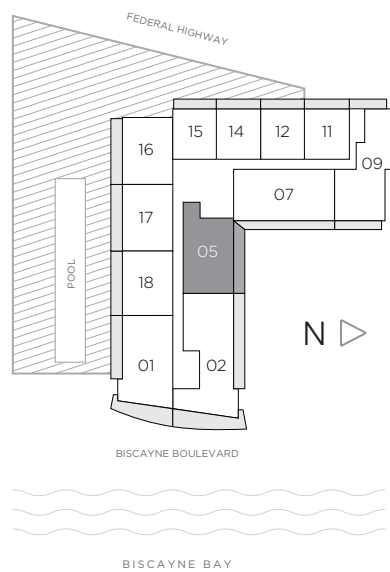
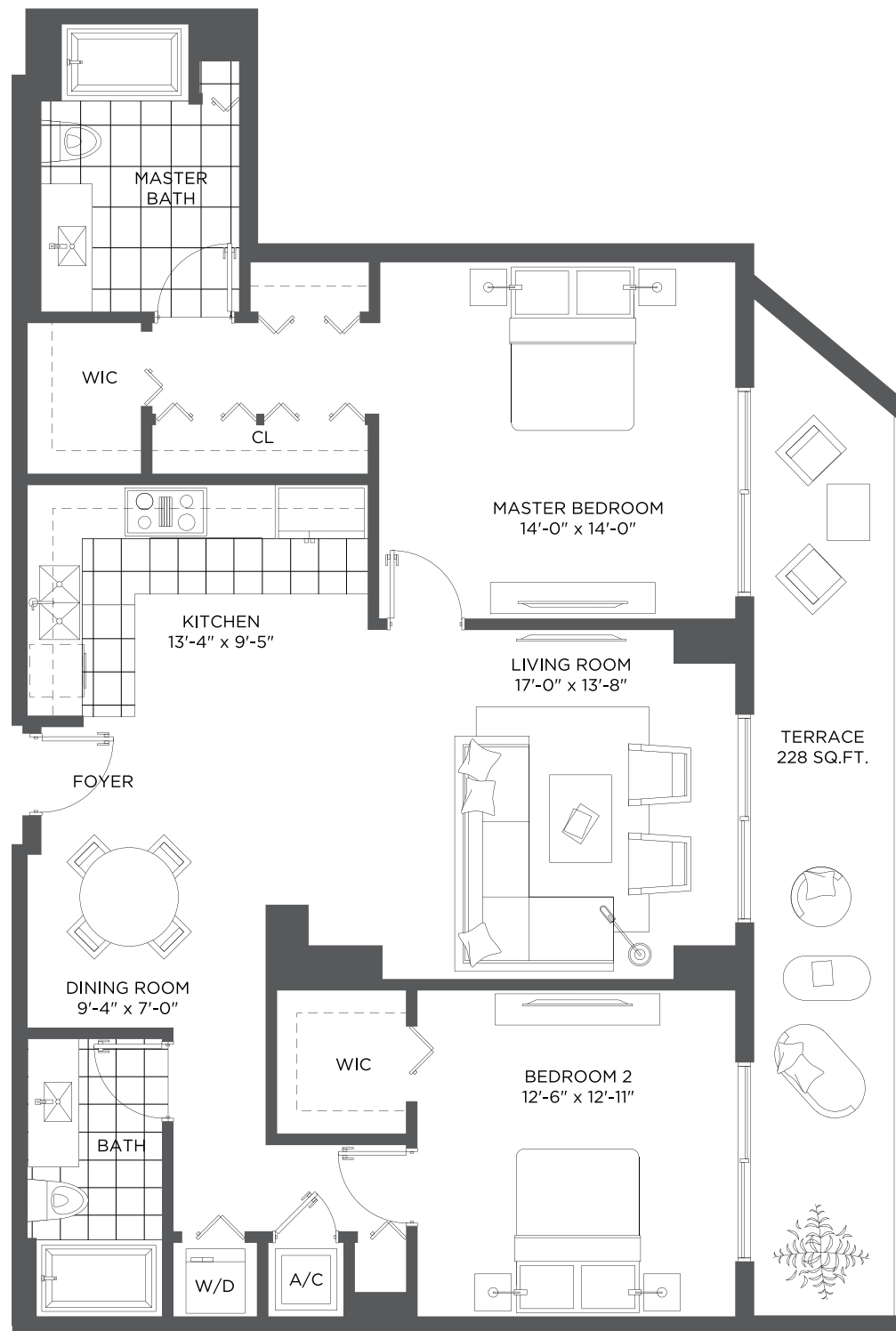


Stated dimensions are measured to the exterior boundaries of the exterior walls and the centerline of interior demising walls and in fact vary from the dimensions that would be determined by using the description and definition of the "Unit" set forth in the Declaration (which generally only includes the interior airspace between the perimeter walls and excludes interior structural components). For your reference, the area of the Unit, determined in accordance with those defined unit boundaries, is + or - 1,305 sq. ft. for units 01. Note that measurements of rooms set forth on this floor plan are generally taken at the greatest points of each given room (as if the room were a perfect rectangle), without regard for any cutouts. Accordingly, the area of the actual room will typically be smaller than the product obtained by multiplying the stated length times width. All dimensions are approximate and may vary with actual construction, and all floor plans and development plans are subject to change.

RESIDENCE 05

2 BEDROOMS / 2 BATHS

RESIDENCE 05 / FLOORS 15 TO 16



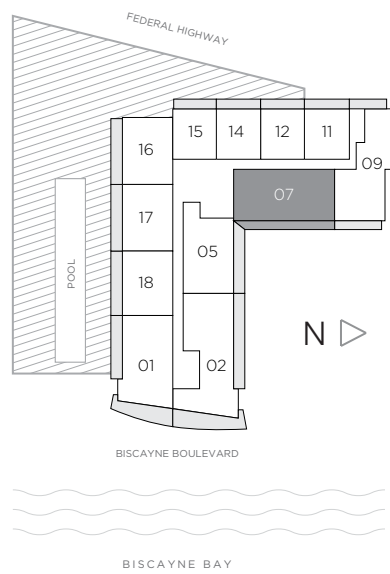
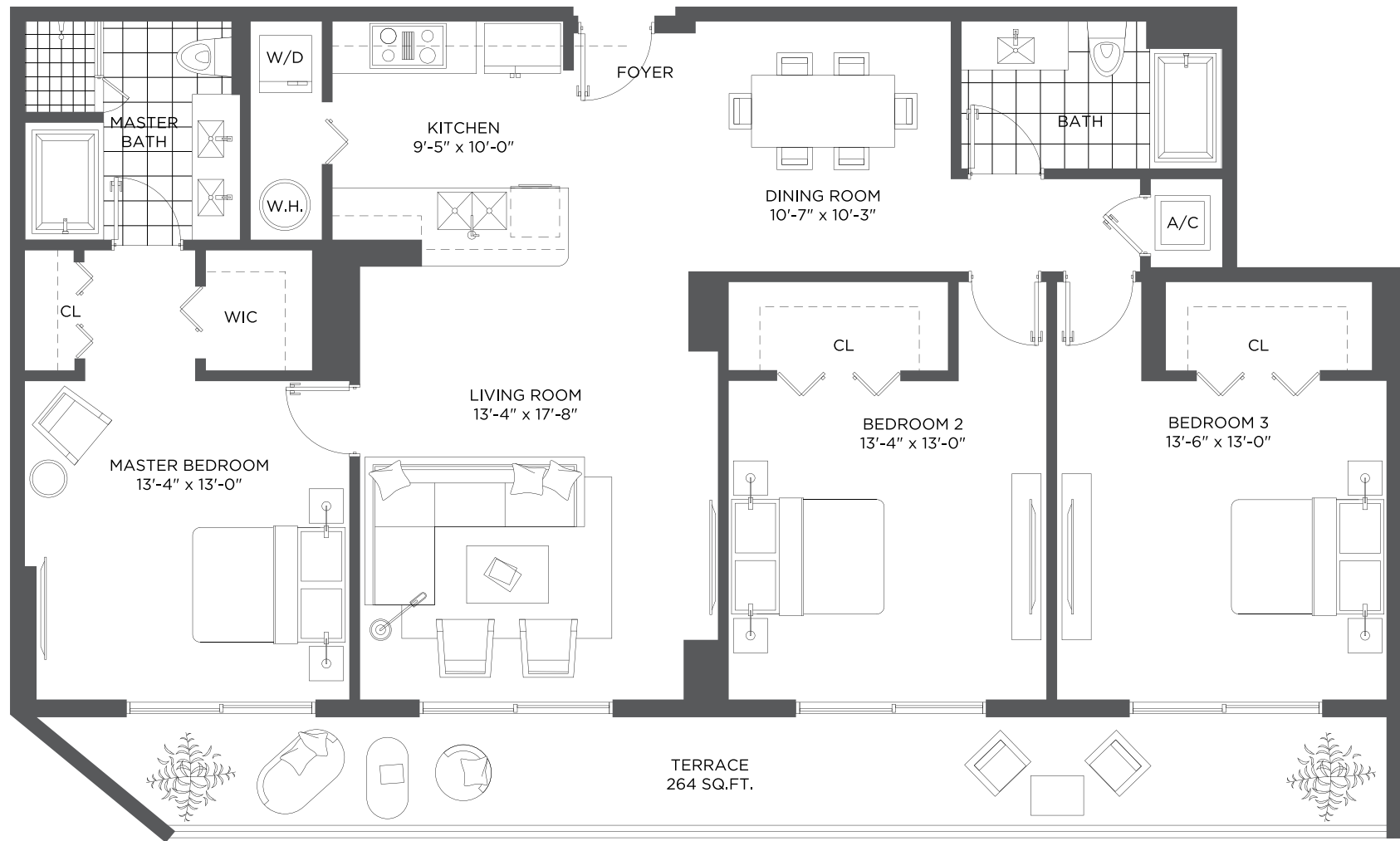
A/C INTERIOR AREA	1282 SQ.FT.	119.10 SQ.M.
TERRACE	228 SQ.FT.	21.18 SQ.M.
TOTAL RESIDENCE	1510 SQ.FT.	140.28 SQ.M.

Stated dimensions are measured to the exterior boundaries of the exterior walls and the centerline of interior demising walls and in fact vary from the dimensions that would be determined by using the description and definition of the "Unit" set forth in the Declaration (which generally only includes the interior airspace between the perimeter walls and excludes interior structural components). For your reference, the area of the Unit, determined in accordance with those defined unit boundaries, is + or - 1,305 sq. ft. for units 01 Note that measurements of rooms set forth on this floor plan are generally taken at the greatest points of each given room (as if the room were a perfect rectangle), without regard for any cutouts. Accordingly, the area of the actual room will typically be smaller than the product obtained by multiplying the stated length times width. All dimensions are approximate and may vary with actual construction, and all floor plans and development plans are subject to change.

RESIDENCE 07

3 BEDROOMS / 2 BATHS

RESIDENCE 07 / FLOOR 16



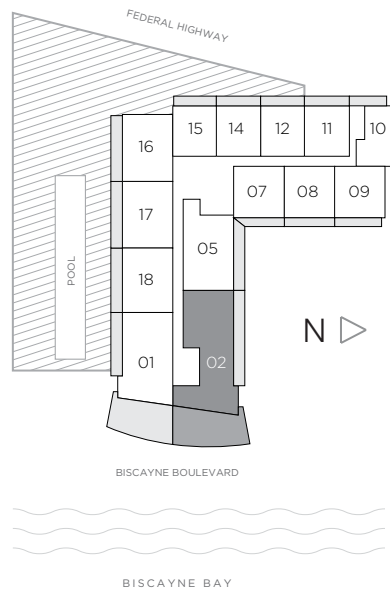
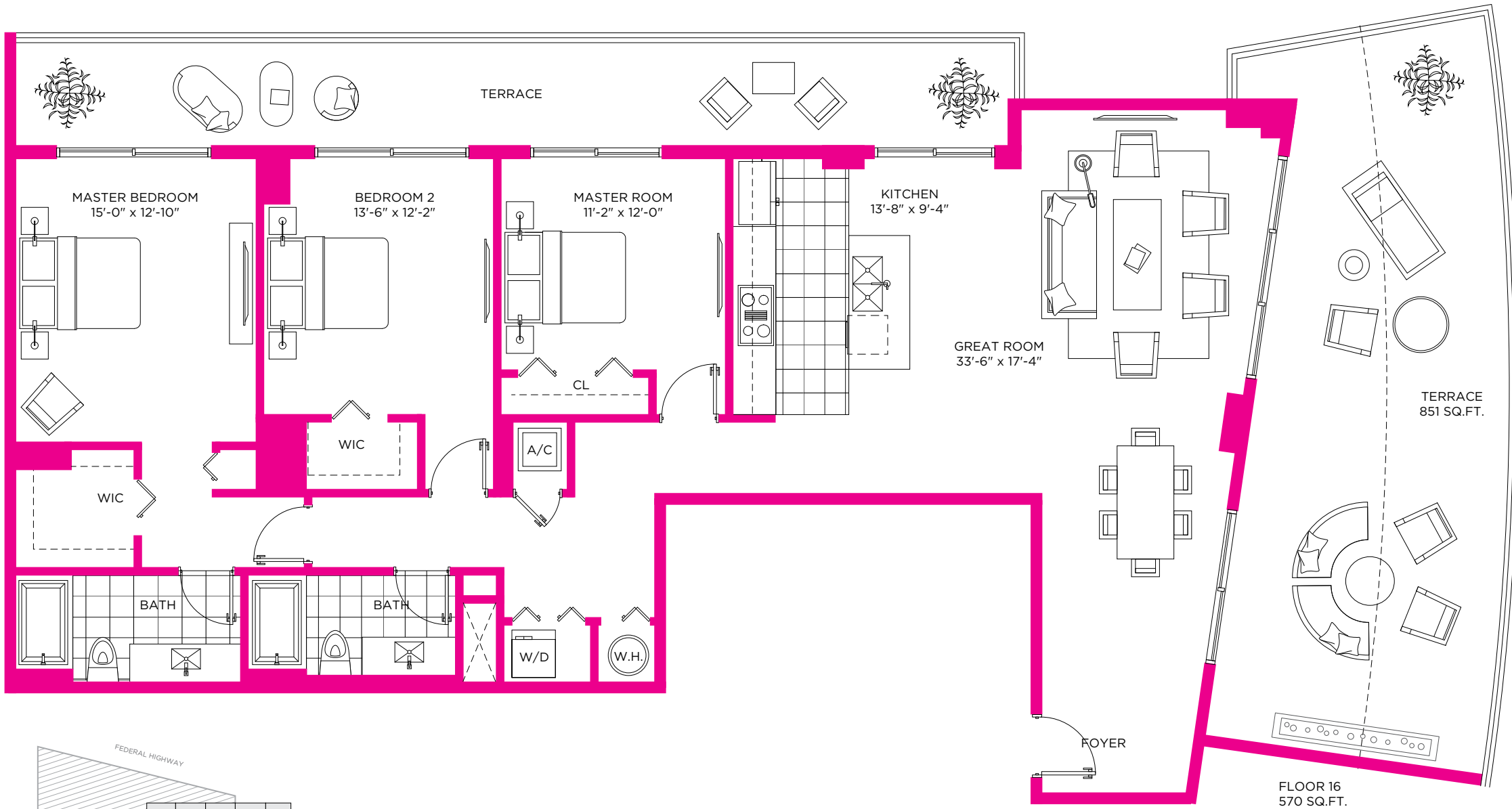
A/C INTERIOR AREA	1520 SQ.FT.	141.21 SQ.M.
TERRACE	264 SQ.FT.	24.52 SQ.M.
TOTAL RESIDENCE	1784 SQ.FT.	165.73 SQ.M.

Stated dimensions are measured to the exterior boundaries of the exterior walls and the centerline of interior demising walls and in fact vary from the dimensions that would be determined by using the description and definition of the "Unit" set forth in the Declaration (which generally only includes the interior airspace between the perimeter walls and excludes interior structural components). For your reference, the area of the Unit, determined in accordance with those defined unit boundaries, is + or - 1,305 sq. ft. for units 01 Note that measurements of rooms set forth on this floor plan are generally taken at the greatest points of each given room (as if the room were a perfect rectangle), without regard for any cutouts. Accordingly, the area of the actual room will typically be smaller than the product obtained by multiplying the stated length times width. All dimensions are approximate and may vary with actual construction, and all floor plans and development plans are subject to change.

RESIDENCE 02

3 BEDROOMS / 2 BATHS

RESIDENCE 02 / FLOOR 15 TO 16



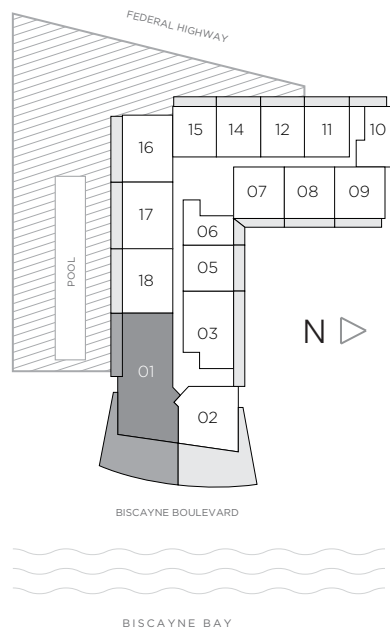
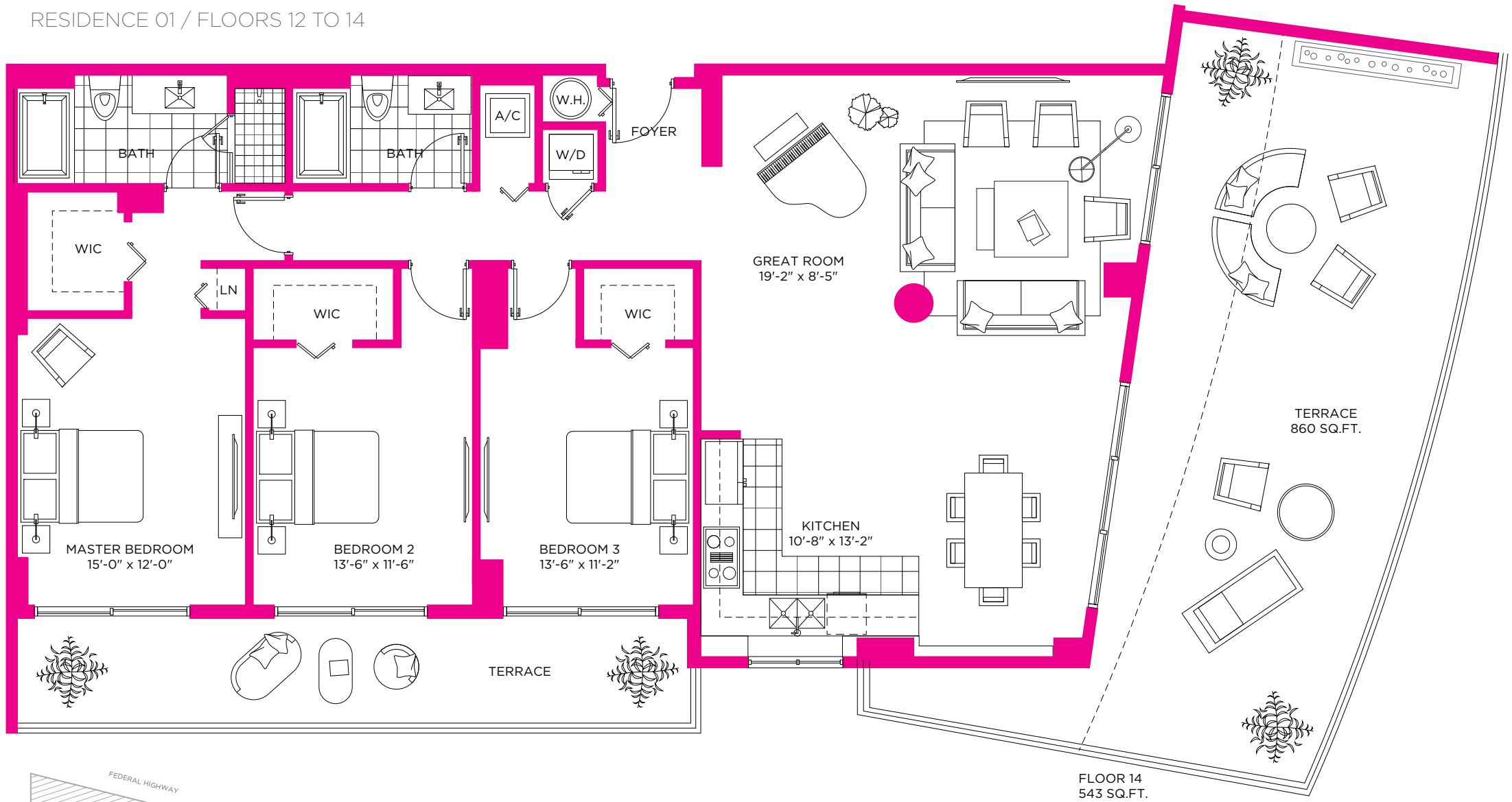
A/C INTERIOR AREA	1782 SQ.FT.	165.55 SQ.M.
TERRACE	851 SQ.FT.	79.06 SQ.M.
TOTAL RESIDENCE	2633 SQ.FT.	244.61 SQ.M.

Stated dimensions are measured to the exterior boundaries of the exterior walls and the centerline of interior demising walls and in fact vary from the dimensions that would be determined by using the description and definition of the "Unit" set forth in the Declaration (which generally only includes the interior airspace between the perimeter walls and excludes interior structural components). For your reference, the area of the Unit, determined in accordance with those defined unit boundaries, is + or - 1,305 sq. ft. for units 01 Note that measurements of rooms set forth on this floor plan are generally taken at the greatest points of each given room (as if the room were a perfect rectangle), without regard for any cutouts. Accordingly, the area of the actual room will typically be smaller than the product obtained by multiplying the stated length times width. All dimensions are approximate and may vary with actual construction, and all floor plans and development plans are subject to change.

RESIDENCE 01

3 BEDROOMS / 2 BATHS

RESIDENCE 01 / FLOORS 12 TO 14



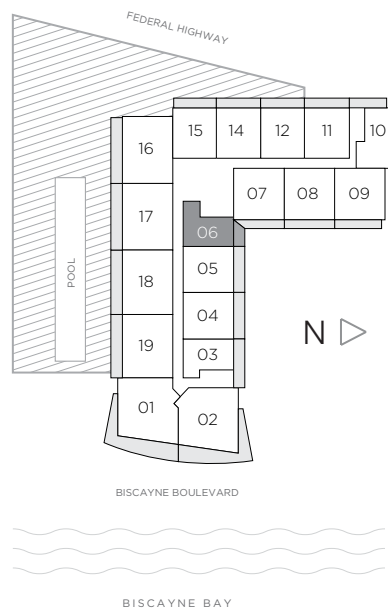
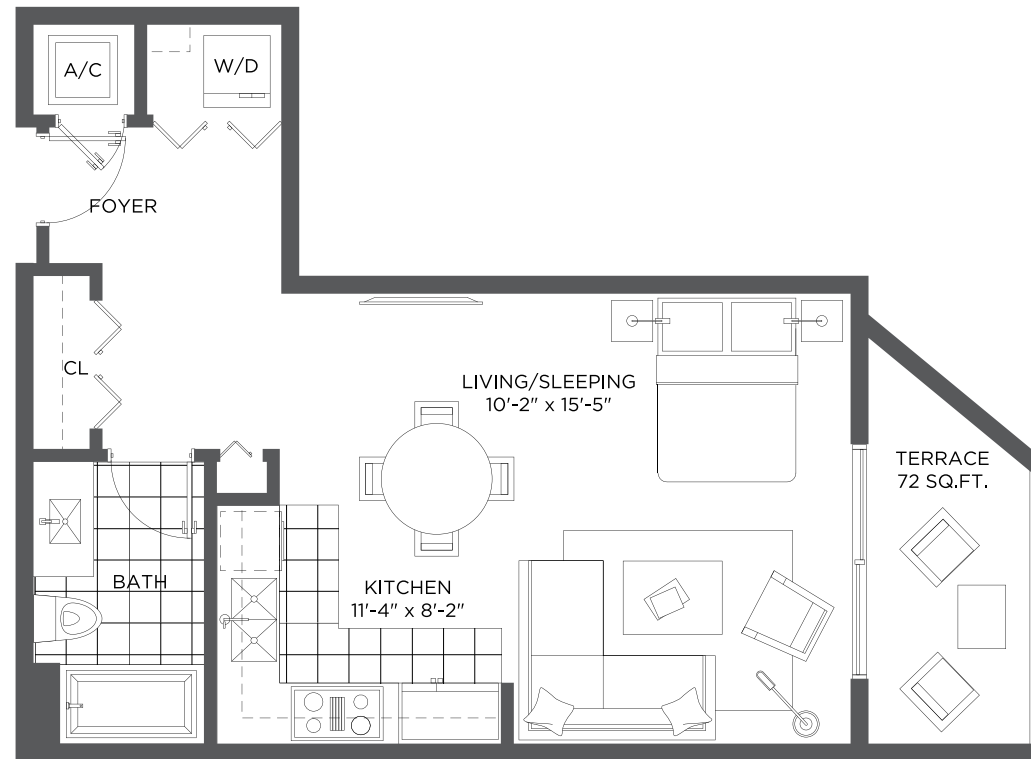
A/C INTERIOR AREA	1720 SQ.FT.	159.79 SQ.M.
TERRACE	860 SQ.FT.	79.89 SQ.M.
TOTAL RESIDENCE	2580 SQ.FT.	239.68 SQ.M.

Stated dimensions are measured to the exterior boundaries of the exterior walls and the centerline of interior demising walls and in fact vary from the dimensions that would be determined by using the description and definition of the "Unit" set forth in the Declaration (which generally only includes the interior airspace between the perimeter walls and excludes interior structural components). For your reference, the area of the Unit, determined in accordance with those defined unit boundaries, is + or - 1,305 sq. ft. for units 01. Note that measurements of rooms set forth on this floor plan are generally taken at the greatest points of each given room (as if the room were a perfect rectangle), without regard for any cutouts. Accordingly, the area of the actual room will typically be smaller than the product obtained by multiplying the stated length times width. All dimensions are approximate and may vary with actual construction, and all floor plans and development plans are subject to change.

RESIDENCE 06

STUDIO

RESIDENCE 06 / FLOORS 7 TO 14



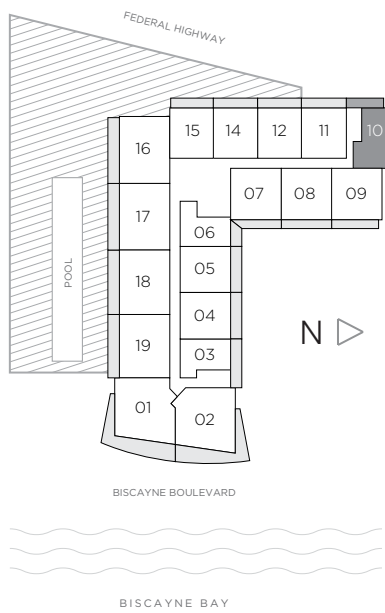
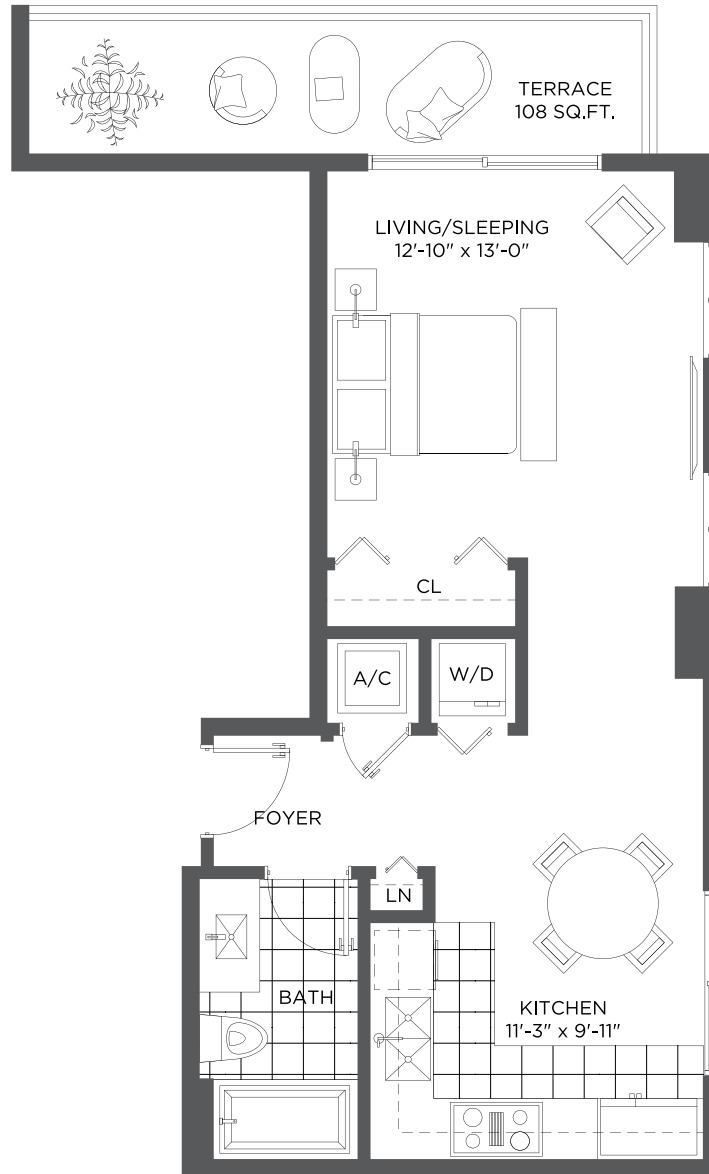
A/C INTERIOR AREA	540 SQ.FT.	50.16 SQ.M.
TERRACE	72 SQ.FT.	6.68 SQ.M.
TOTAL RESIDENCE	612 SQ.FT.	56.85 SQ.M.

Stated dimensions are measured to the exterior boundaries of the exterior walls and the centerline of interior demising walls and in fact vary from the dimensions that would be determined by using the description and definition of the "Unit" set forth in the Declaration (which generally only includes the interior airspace between the perimeter walls and excludes interior structural components). For your reference, the area of the Unit, determined in accordance with those defined unit boundaries, is + or - 1,305 sq. ft. for units 01 Note that measurements of rooms set forth on this floor plan are generally taken at the greatest points of each given room (as if the room were a perfect rectangle), without regard for any cutouts. Accordingly, the area of the actual room will typically be smaller than the product obtained by multiplying the stated length times width. All dimensions are approximate and may vary with actual construction, and all floor plans and development plans are subject to change.

RESIDENCE 10

STUDIO

RESIDENCE 10 / FLOORS 5 TO 15



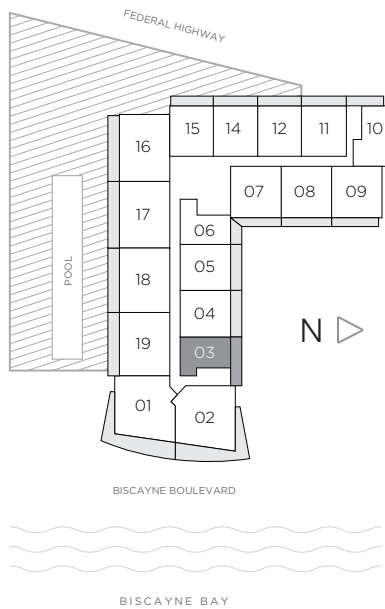
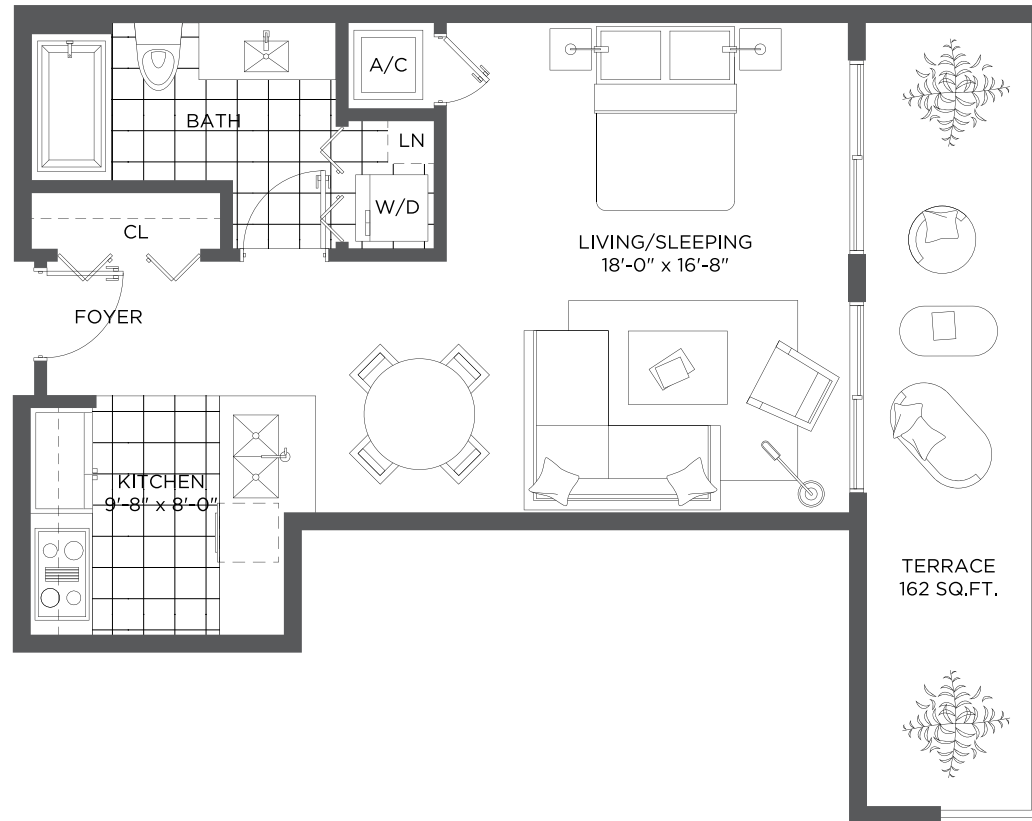
A/C INTERIOR AREA	530 SQ.FT.	49.23 SQ.M.
TERRACE	108 SQ.FT.	10.03 SQ.M.
TOTAL RESIDENCE	638 SQ.FT.	59.27 SQ.M.

Stated dimensions are measured to the exterior boundaries of the exterior walls and the centerline of interior demising walls and in fact vary from the dimensions that would be determined by using the description and definition of the "Unit" set forth in the Declaration (which generally only includes the interior airspace between the perimeter walls and excludes interior structural components). For your reference, the area of the Unit, determined in accordance with those defined unit boundaries, is + or - 1,305 sq. ft. for units 01. Note that measurements of rooms set forth on this floor plan are generally taken at the greatest points of each given room (as if the room were a perfect rectangle), without regard for any cutouts. Accordingly, the area of the actual room will typically be smaller than the product obtained by multiplying the stated length times width. All dimensions are approximate and may vary with actual construction, and all floor plans and development plans are subject to change.

RESIDENCE 03

STUDIO

RESIDENCE 03 / FLOORS 7 TO 11



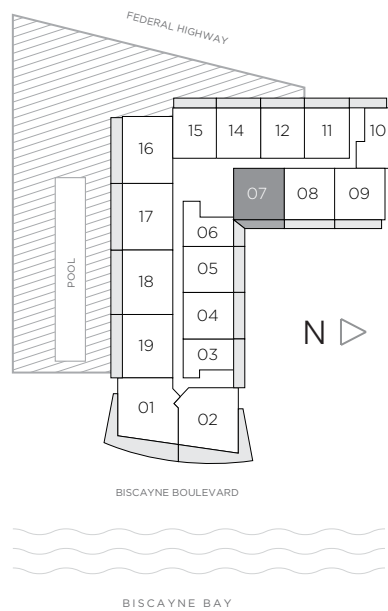
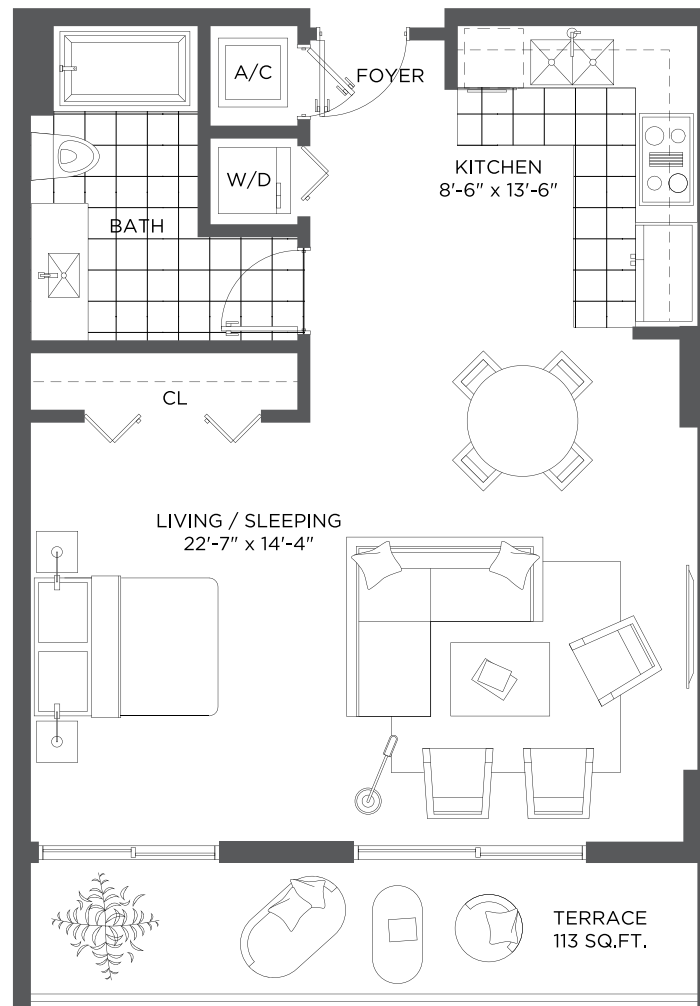
A/C INTERIOR AREA	520 SQ.FT.	48.30 SQ.M.
TERRACE	162 SQ.FT.	15.05 SQ.M.
TOTAL RESIDENCE	682 SQ.FT.	63.35 SQ.M.

Stated dimensions are measured to the exterior boundaries of the exterior walls and the centerline of interior demising walls and in fact vary from the dimensions that would be determined by using the description and definition of the "Unit" set forth in the Declaration (which generally only includes the interior airspace between the perimeter walls and excludes interior structural components). For your reference, the area of the Unit, determined in accordance with those defined unit boundaries, is + or - 1,305 sq. ft. for units 01 Note that measurements of rooms set forth on this floor plan are generally taken at the greatest points of each given room (as if the room were a perfect rectangle), without regard for any cutouts. Accordingly, the area of the actual room will typically be smaller than the product obtained by multiplying the stated length times width. All dimensions are approximate and may vary with actual construction, and all floor plans and development plans are subject to change.

RESIDENCE 07

STUDIO

RESIDENCE 07 / FLOORS 5 TO 6



A/C INTERIOR AREA	620 SQ.FT.	57.59 SQ.M.
TERRACE	113 SQ.FT.	10.498 SQ.M.
TOTAL RESIDENCE	733 SQ.FT.	68.09 SQ.M.

Stated dimensions are measured to the exterior boundaries of the exterior walls and the centerline of interior demising walls and in fact vary from the dimensions that would be determined by using the description and definition of the "Unit" set forth in the Declaration (which generally only includes the interior airspace between the perimeter walls and excludes interior structural components). For your reference, the area of the Unit, determined in accordance with those defined unit boundaries, is + or - 1,305 sq. ft. for units 01 Note that measurements of rooms set forth on this floor plan are generally taken at the greatest points of each given room (as if the room were a perfect rectangle), without regard for any cutouts. Accordingly, the area of the actual room will typically be smaller than the product obtained by multiplying the stated length times width. All dimensions are approximate and may vary with actual construction, and all floor plans and development plans are subject to change.