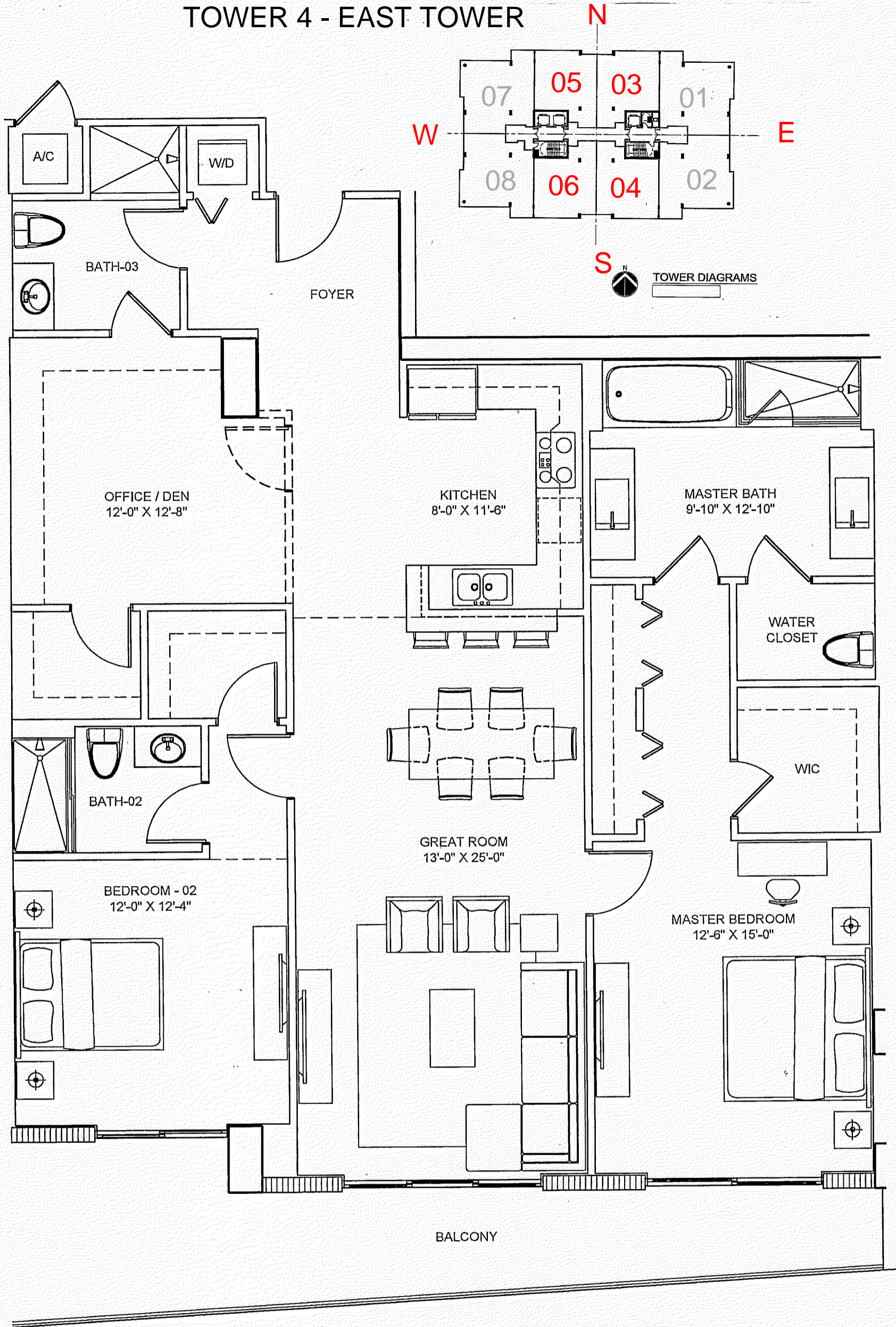


# PARQUE TOWERS AT ST. TROPEZ

## TOWER 4 - EAST TOWER



**LOCATED IN THE CENTER PART OF THE TOWER:**

**LINES 3 AND 5 - FACING THE PARK - FLOORS 5 TO 25**

4-503-LANAI, 4-603, 4-703, 4-803, 4-903, 4-1003, 4-1103, 4-1203, 4-1403, 4-1503,  
4-1603, 4-1703, 4-1803, 4-1903, 4-2003, 4-2103, 4-2203, 4-2303, 4-2403, 4-2503  
4-505-LANAI, 4-605, 4-705, 4-805, 4-905, 4-1005, 4-1105, 4-1205, 4-1405, 4-1505,  
4-1605, 4-1705, 4-1805, 4-1905, 4-2005, 4-2105, 4-2205, 4-2305, 4-2405, 4-2505

**LINES 4 AND 6 - FACING THE WATER - FLOORS 7 TO 25**

4-704, 4-804, 4-904, 4-1004, 4-1104, 4-1204, 4-1404, 4-1504, 4-1604, 4-1704, 4-1804,  
4-1904, 4-2004, 4-2104, 4-2204, 4-2304, 4-2404, 4-2504  
4-706, 4-806, 4-906, 4-1006, 4-1106, 4-1206, 4-1406, 4-1506, 4-1606, 4-1706, 4-1806  
4-1906, 4-2006, 4-2106, 4-2206, 4-2306, 4-2406, 4-2506

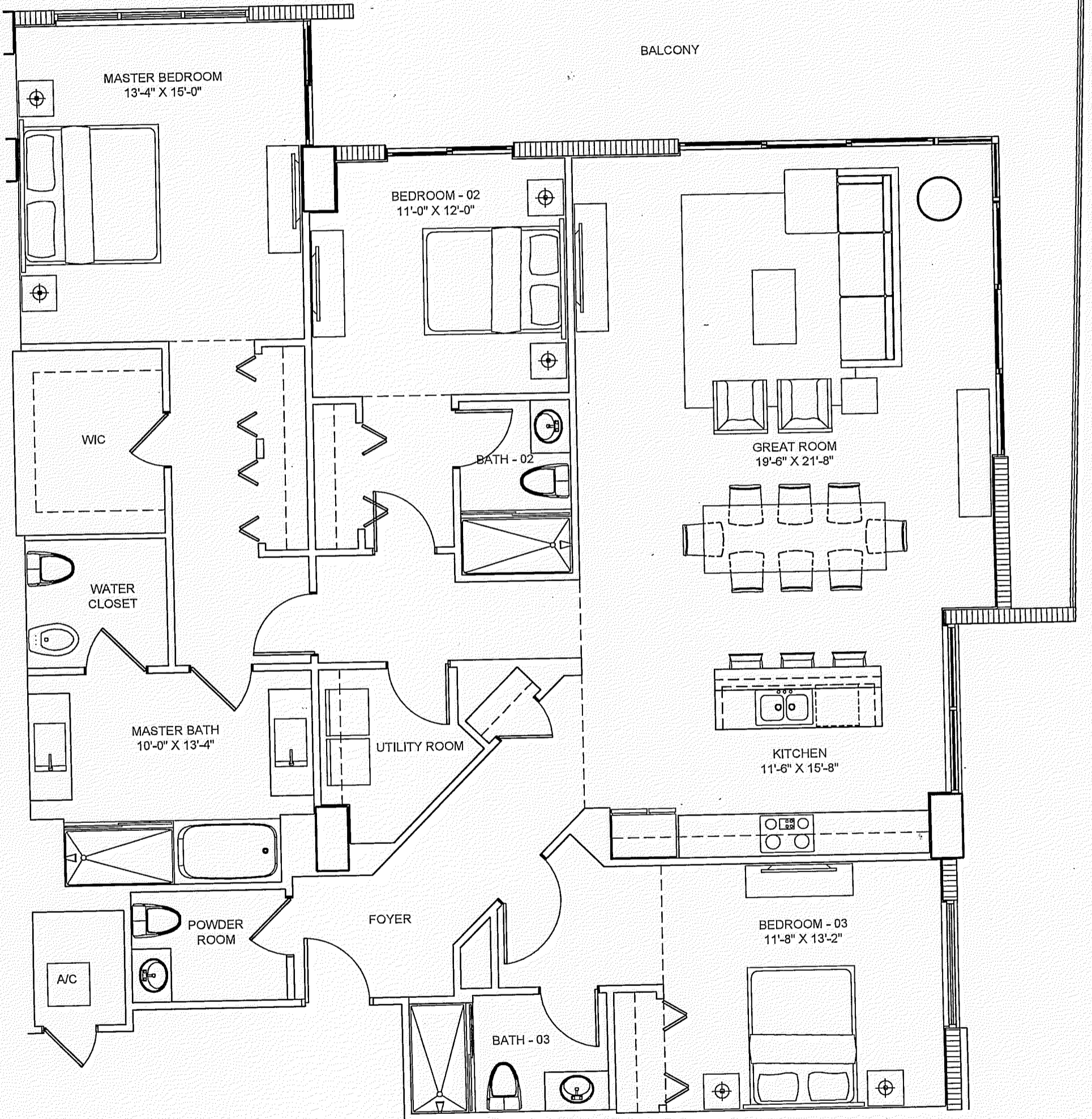
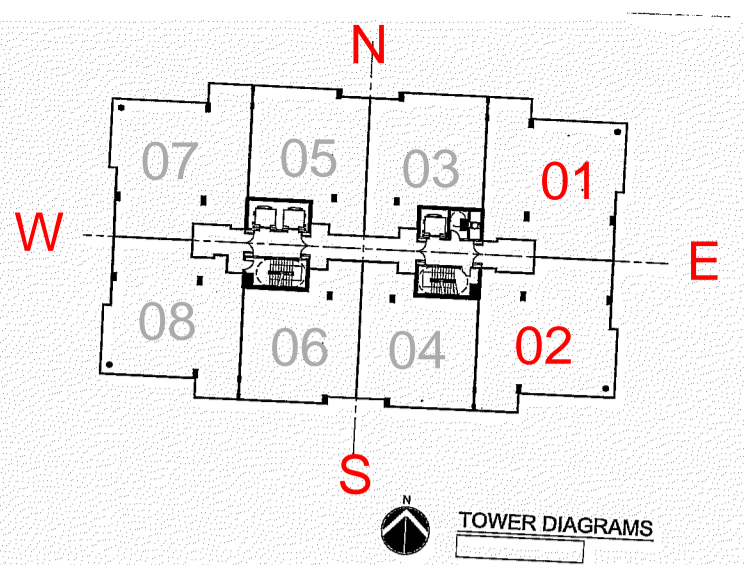
**UNIT A - 2B/3B/D**

1,638 SF - AC

212 SF - BALCONY

1,850 SF TOTAL

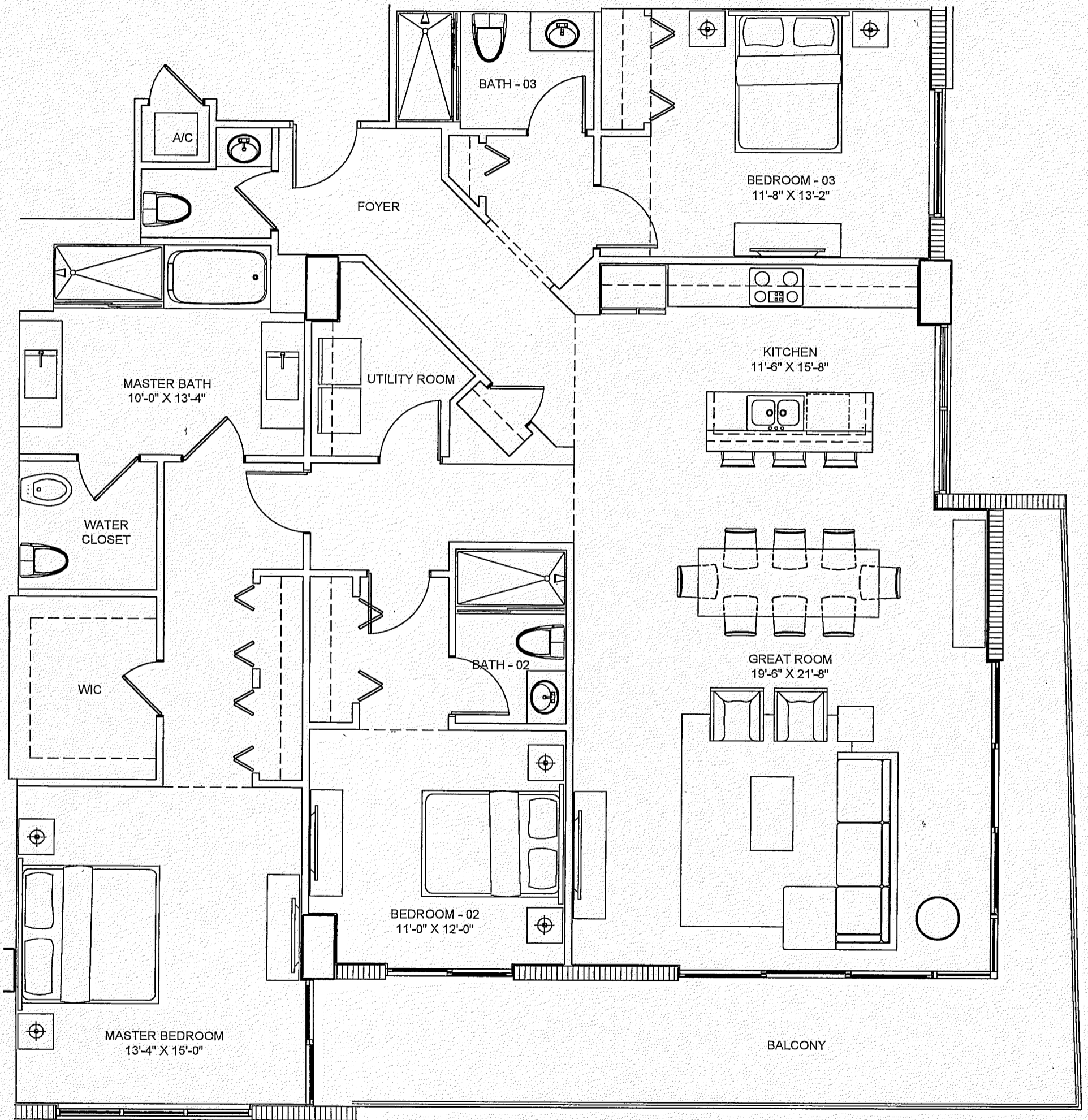
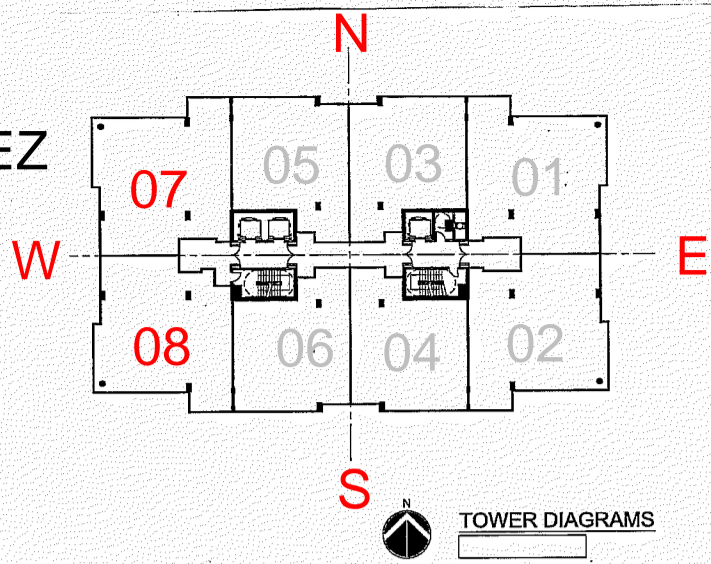
PARQUE TOWERS AT ST. TROPEZ  
TOWER 4 - EAST TOWER



LOCATED IN THE EAST CORNERS OF THE TOWER  
 LINE 01 - FACING THE PARK - FLOORS 5 TO 25  
 4-501 LANAI, 4-601, 4-701, 4-801, 4-901, 4-1001, 4-1101, 4-1201, 4-1401, 4-1501  
 4-1601, 4-1701, 4-1801, 4-1901, 4-2001, 4-2101, 4-2201, 4-2301, 4-2401, 4-2501  
 LINE 02 - FACING THE WATER - FLOORS 7 TO 25  
 4-702, 4-802, 4-902, 4-1002, 4-1102, 4-1202, 4-1402, 4-1502, 4-1602, 4-1702, 4-1802  
 4-1902, 4-2002, 4-2102, 4-2202, 4-2302, 4-2402, 4-2502

UNIT B  
 3B/3.5B  
 APPROXIMATELY 2500 SQ.FT.

PARQUE TOWERS AT ST. TROPEZ  
TOWER 4 - EAST TOWER



**LOCATED IN THE WEST CORNERS OF THE TOWER:**  
**LINE 7 - FACING THE PARK - FLOORS 6 TO 25**  
 607, 707, 807, 907, 1007, 1107, 1207, 1407, 1507, 1607, 1707, 1807  
 1907, 2007, 2107, 2207, 2307, 2407, 2507  
**LINE 8 - FACING THE WATER - FLOORS 6 TO 25**  
 608, 708, 808, 908, 1008, 1108, 1208, 1408, 1508, 1608, 1708, 1808,  
 1908, 2008, 2108, 2208, 2308, 2408, 2508

**UNIT B1 - 3B/3.5B**  
**APPROXIMATELY 2500 SQ.FT.**