



SLS HOTEL & RESIDENCES®

BRICKELL

ORAL REPRESENTATIONS CANNOT BE RELIED UPON AS CORRECTLY STATING THE REPRESENTATIONS OF THE DEVELOPER. FOR CORRECT REPRESENTATIONS, MAKE REFERENCE TO THIS BROCHURE AND TO THE DOCUMENTS REQUIRED BY SECTION 718.503, FLORIDA STATUTES, TO BE FURNISHED BY A DEVELOPER TO A BUYER OR LESSEE. OBTAIN THE PROPERTY REPORT REQUIRED BY FEDERAL LAW AND READ IT BEFORE SIGNING ANYTHING. NO FEDERAL AGENCY HAS JUDGED THE MERITS OR VALUE, IF ANY, OF THIS PROPERTY.

INSPIRED SPOILED
redefined

SPIRITED ALIVE *elegant*

LUXURY

BEAUTY *effortless design*
scene

MEMORABLE *seamless design*

access PULSE *strong*

REFINED *effortless chic*

UNITED AGAIN & invited 3 new friends

Visionary developer Jorge Perez has joined forces with hotelier Sam Nazarian and world reknown designer Philippe Starck to create Downtown Miami's hottest new lifestyle destination: SLS Hotel & Residences Brickell. Infused with art and designed to entertain, SLS Brickell will offer a feast of unconventional luxury and an entirely new twist on tropical sophistication.

Located on South Miami Avenue, just a few blocks from Mary Brickell Village, SLS Brickell is surrounded by fine dining and chic shopping. From the first footsteps into the Philippe Starck designed lobby, up to the vibrant elevated pool terrace, and throughout the indoor and outdoor restaurant experiences by José Andrés, Katsuya Uechi and Michael Schwartz, SLS Brickell is at the center of excitement. Rising above it all, sits luxurious hotel rooms and suites, and spectacular residences with views across Miami and the Atlantic Ocean.

From left to right:

MICHAEL SCHWARTZ
Chef/Owner of Michael's Genuine

SAM NAZARIAN
Founder, Chairman and CEO of sbe and SLS Hotels

JORGE PEREZ
Founder, Chairman & CEO of The Related Group
and Developer of SLS Brickell

PHILIPPE STARCK
Designer of SLS Hotels

JOSÉ ANDRÉS
Culinary Director of SLS Hotels

SEE LEGAL DISCLAIMERS ON BACK COVER





“THE WORLD IS BIG.

IT IS ALWAYS GOOD TO HAVE AN ISLAND. IT IS BETTER WITH A VOLCANO OF ENERGY, A FOREST OF TALENTS, A CHOICE OF GOOD FOOD, A POOL OF FRESH WATER, A PERMANENT SUN, THE PERSON YOU LOVE AND 2 GOOD FRIENDS LIKE SAM NAZARIAN AND *GEORGE PEREZ*.

THIS ISLAND OF CREATIVITY, QUALITY, ELEGANCE AND I HOPE, HAPPINESS, IS CALLED SLS BRICKELL AND IT IS IN THE HEART OF MIAMI.”

PHILIPPE STARCK

hotel design by
S+ARCK





ICON BRICKELL, *Miami*

scenic
LIVELY
social

“SOUTH MIAMI AVENUE IS TRANSFORMING BEFORE OUR EYES. SOON IT WILL BE BRICKELL’S ANSWER TO LINCOLN ROAD WITH SLS AT THE SOUTH END AND BRICKELL CITYCENTRE AT THE NORTH.”

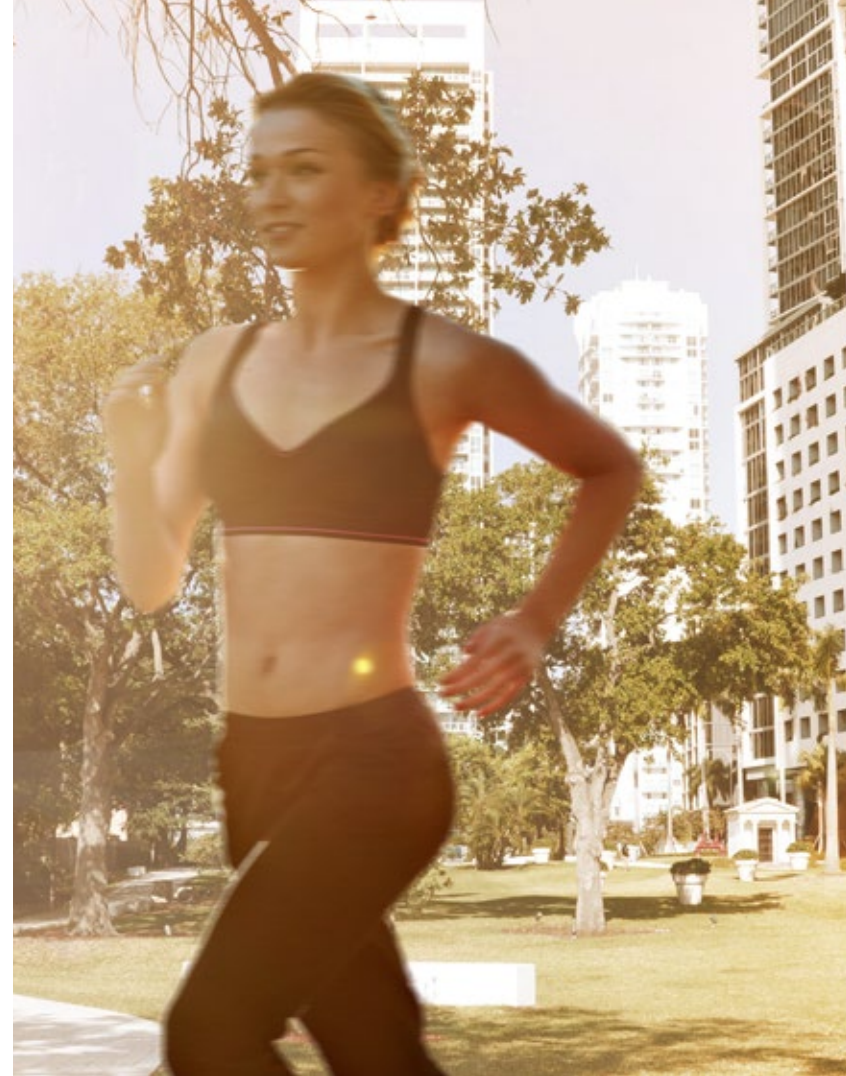
JORGE M. PÉREZ

AT THE CENTER *of it all*

Just minutes from Miami Beach and Key Biscayne, SLS Hotel & Residences puts you at the center of Miami’s most desirable destinations within its glittering urban skyline. Located near premier corporate offices, multinational banks and leading law firms, with direct Metrovover access to the Miami International Airport, SLS offers unparalleled conveniences to its residents. In addition to SLS’s eclectic array of restaurants, the local area boasts exceptional dining options for serious foodies such as classic Italian fare at Il Gabbiano and modern Japanese cuisine at Zuma.

SLS
coming soon





SEE LEGAL DISCLAIMERS ON BACK COVER



DINING

1. Il Gabbiano
2. Wolfgang's Stakehouse
3. Zuma
4. DB Bistro Moderne
5. Area 31
6. Capital Grille
7. Azul
8. Tobacco Road
9. The River Oyster Bar
10. The Oceanaire Seafood Room
11. P.F. Chang's China Bistro
12. Rosa Mexicano
13. Perricone's Marketplace & Café
14. Segafredo Espresso Café
15. Novecento
16. PM Buenos Aires
17. Dolores Lolita
18. Morton's Steakhouse
19. Eos at Viceroy
20. Truluck's Restaurant
21. Pizza Rustica
22. Brickell Bridge Bistro and Bar
23. Volare Italian Restaurant
24. La Lupita
25. Mint Leaf Indian Brasserie
26. Suviche / Sushi & Ceviche
27. Gelatto Nostro
28. The Hoxton
29. Mare Nostrum
30. Rosa Vito
31. Toscana Divino
32. Rosinella Downtown
33. Pizza Piola
34. Brickell Irish Pub
35. Big Fish
36. Crazy About You
37. Blue Parrot
38. Baru Urbano

SHOPPING

39. Mary Brickell Village
40. Brickell CityCentre*
41. Whole Foods Supermarket*
42. Publix (Mary Brickell)
43. Publix (Coral Way)

HOTELS

44. Four Seasons Hotel
45. Epic Hotel
46. JW Marriot Marquis Hotel
47. Mandarin Oriental Hotel
48. Viceroy Hotels & Resorts
49. Conrad Hotel
50. J.W. Marriot Hotel
51. Hyatt Regency Miami

PARKS

52. Miami Bicentennial Park
53. Miami Bayfront Park
54. Miami Circle Park
55. Brickell Park
56. Miami River Boardwalk
57. Brickell Bay Boardwalk
58. Simpson Park
59. Flatiron Park

BANKS

60. Citi Bank
61. Wells Fargo Tower
62. JP Morgan Chase Tower
63. 600 Brickell Financial
64. Wachovia Tower
65. Bank of America Tower
66. Mellon Bank Tower
67. Espiritu Santo Plaza
68. Sabadell Financial Center
69. Banco Santander International

* under construction

FIND THE ENERGY & spirit of *Miami in Brickell*

SLS is in the heart of Miami's newest hot spot: Brickell. Shops, restaurants, clubs, and entertainment are all just steps away. High-end retailers and gourmet destinations thrive in the pedestrian-friendly atmosphere of nearby Mary Brickell Village. Soon to join the excitement is Brickell CityCentre, a nine-acre complex that will offer luxury shopping, fine dining and entertainment in addition to corporate office towers. Adding to the diversity of the area is the new state-of-the-art Marlins Park Major League Baseball stadium.

SEE LEGAL DISCLAIMERS ON BACK COVER



PÉREZ ART MUSEUM MIAMI (PAMM), *Miami*



RESORTS WORLD, *Miami*



BRICKELL CITYCENTRE, *Miami*



HERMÈS, *Miami - Design District*



MIAMI SCIENCE MUSEUM, *Miami*



BRICKELL CITYCENTRE, *Miami*

ARTIST CONCEPTUAL RENDERING

STRIKING
architecture
coming soon to Brickell's sidewalks

DESIGN *by* ARQUITECTONICA

Renowned international architectural firm Arquitectonica brings an urban edge to the tropical atmosphere with sleek contemporary design. The company is known for sophisticated surface patterning and facade articulation as eloquently expressed in the design of the SLS Brickell tower.



LIFESTYLE

in the heart of Brickell

*From STREETScape to SKYLINE,
SLS Brickell has it all*

Set on South Miami Avenue in the heart of Brickell – Downtown Miami's upscale hotspot – SLS Brickell Hotel & Residences is surrounded by the chic boutiques, top restaurants, and exciting nightlife that make it an all day-all night lifestyle destination. The street is your lobby and the dramatic Philippe Starck Hotel lobby is your street. Step inside and find Miami's internationally renowned art scene right here with original installations by contemporary artists Markus Linnenbrink and Katja Loher throughout the Hotel lobby and other amenity spaces.

The SLS Hotel on the first eight floors is devoted to spoiling every guest with comfort and indulgence every minute of the day. From breakfast in bed to champagne on ice, the contemporary design of hotel suites offers the most exquisite setting for private pleasures. Above the hotel, 42 floors of high-design condominiums feature extraordinary contemporary finishes and state-of-the-art amenities. And for those seeking the ultimate in tropical sophistication, SLS Brickell's limited collection of Penthouse residences on the top four floors feature custom gourmet kitchens by José Andrés, spa-inspired bathrooms with sculpted tubs by Mario Sasso, and panoramic skyline, ocean, and bay views.

The inimitable atmosphere of SLS Brickell comes alive on the luxuriously landscaped Pool Terrace level where private cabanas, al fresco dining, and the Hyde Lounge create excitement all day and late into the night. Step up to the terrace overlooking South Miami Avenue and it feels as if you are sailing over the ripples of a glittering tropical metropolis.

Step down the plush corridor to pursue your health and wellness goals at SLS's state-of-the-art Fitness Center and relax completely within the tranquility of Ciel Spa.

When you are hungry for the finest cuisine in the city, look no further; it's all here. The Bazaar by José Andrés, Katsuya by Starck, and Michael's by Michael Schwartz offer a world of delicious gourmet fare by award-winning chefs in the most stylish surroundings. When live entertainment is what you desire, SBar satisfies with soulful jazz and perfectly mixed cocktails.

For a taste of the tranquil side of the tropics, condominium residents are exclusively invited to rise above the scene to SLS Brickell's Sky Roof Pool Deck at the top of the tower. Incomparable 360-degree views put all of Miami, the Atlantic Ocean and Biscayne Bay at your fingertips from sunrise to sunset.

SLS Brickell is the first property to bring world-class personal service to Downtown Miami's Brickell neighborhood. Hotel guests and condominium residents will enjoy white glove service designed to make every moment count and satisfy every whim. Our 24/7 concierge ensures access to the most sought-after entertainment and most coveted restaurants in addition to just about any other arrangements that might be needed. For special events from movie premieres to private parties, the SLS Ballroom and Party Room can be perfectly staged by the professional event planning staff.

8 - STORY
GARAGE PARKING

*Secured fob-accessible garage with facade
designed by Markus Linnenbrink
Covered arrival entry with interactive
art installation by Katja Loher
Valet parking for all residences, restaurant's and
hotel guests
Direct access from parking floors
to residential elevators*

**DESIGNER READY
LUXURY RESIDENCES**

*450 designer ready luxury residences
Glass railing terraces surrounding all
residences with wrap around in
all corner units
Gourmet kitchens and luxurious
appointed bathrooms
Secured garage with assigned
self parking spaces for every residence
Valet services 24/7
Hotel Services on Demand*

**GARDEN CLUB AT
9TH LEVEL**

*200 feet infinity heated pool
Wrap around pool deck terrace
Hyde Lounge pool bar
Total Health & Wellness Fitness
Center
Ciel Spa
Kids Room
Party Room*

SKY ROOF

*5,000 sft Sky Roof Pool Deck with amazing views
Outdoor rooftop dining*

**HOTEL ROOMS
AND SUITES**

*132 rooms and suites
6,000 sft ballroom
2,000 sft meeting space
200 seat all day Tres Restaurant by José Andrés*

**STREETSCAPE ARRIVAL
AND LOBBIES**

*Residential Lobby for exclusive access to Condominium Residences
Hotel Lobby designed by Philippe Starck
Triple height drop off area with 24/7 valet parking
Michael's by Michael Schwartz Restaurant
Katsuya Restaurant
The Bazaar by José Andrés Restaurant
SBar Jazz Club*

splendidly

LAVISH

sanctuary



THE *coolest*
SWEET LITTLE STAY
coming soon to Brickell's sidewalks

SLS HOTEL: *the art of luxury*

SLS Hotels has created a new paradigm in the luxury hotel experience that speaks to a global, sophisticated audience. Taking service and luxury standards from traditional 5-star hotels and injecting elements of creativity and community, SLS delivers service, style and undeniable sexiness.

SPOILED *with* COMFORT

Work out in our state-of-the-art Fitness Center, spend a day being pampered at the Ciel Spa, choose among restaurants by our top name chefs, and spend the evening listening to live jazz. Every comfort and every convenience is yours with every stay.

SEE LEGAL DISCLAIMERS ON BACK COVER









WELCOME *to the suite life*

Luxurious suites with sinfully comfortable beds and contemporary furnishings will make you beg to be sent to your room. From the spacious extravagance of the Superior King, to the elegant allure of the Premier Double and the sleek seduction of the SLS Suite, every suite offers a private escape with beautiful views over Miami.

SEE LEGAL DISCLAIMERS ON BACK COVER

SPOILED *with* ATTENTION

Life in your private residence has all of the many benefits and pleasures of life in a 5-star hotel. Just ring for room service or housekeeping, host a party with in-residence catering, and let our concierge take care of all of the details that make us wonder how we ever lived without a concierge.

SEE LEGAL DISCLAIMERS ON BACK COVER





seek LIFE'S
SEDUCTIONS

Streetscape Arrival, Restaurants and Lobbies





THE *best*
CHEFS AND ARTISTS
coming soon to Brickell's sidewalks

SEE LEGAL DISCLAIMERS ON BACK COVER



ARTIST CONCEPTUAL RENDERING



SPOILED *by* CHOICES

There's something delicious to contemplate every day with the creations of legendary chefs at your fingertips. Just ring for the elevator and you're already there.

SEE LEGAL DISCLAIMERS ON BACK COVER



JOSÉ ANDRÉS

Named one of the 100 most influential people in the world by TIME magazine in 2012 and “Outstanding Chef” by the James Beard Foundation in 2011, José Andrés is an internationally-recognized culinary innovator, passionate advocate for food and hunger issues, author, educator and television personality. As chef/owner of ThinkFoodGroup, his renowned restaurants span DC, LA, Miami, Las Vegas and Puerto Rico.

At SLS Hotel & Residences, Andrés’ original restaurant concepts, Tres and The Bazaar by José Andrés offer magical dining experiences from casual to truly lavish. Tres by José Andrés, designed by Philippe Starck, brings a contemporary twist to comfort food from European breakfast until crafty late night cocktails. At The Bazaar, Spanish cuisine is masterfully reimaged and served in playful lounge spaces inspired by European piazzas.





MICHAEL SCHWARTZ

James Beard Award-Winning Chef Michael Schwartz has the recognition of his peers and loyalty of diners with restaurants that showcase his commitment to community and responsible, seasonal food sourcing.

Schwartz's food is all about building bold, straightforward flavors with fresh, seasonal Ingredients. Local farmers, fishermen, and ranchers are the inspiration for his restaurants' menus. At his Miami flagship, Michael's Genuine Food & Drink, house-cured heritage meats, homemade seasonal fruit jams, wood-fired whole local fish, colorful salads and dessert are served in a warm, neighborhood atmosphere beloved by locals and visitors alike.

SEE LEGAL DISCLAIMERS ON BACK COVER





十分





KATSUYA UECHI

Master sushi chef Katsuya Uechi brings more than three decades of culinary artistry to SLS Hotels. Known for his distinctive style and first-rate execution of high-quality traditional sushi, Uechi is also recognized as one of the major trend setters in the world of Japanese cuisine and was recently named “Chef of the Year” by Modern Luxury Angeleno magazine.

Katsuya by Starck at SLS Hotel & Residences Brickell pairs Uechi’s sublime culinary creations with design impresario Philippe Starck’s whimsical contemporary interiors. With specialty cocktails, unique rolls and spectacular sushi and sashimi platters, Chef Uechi skillfully translates Japanese flavors to the American palate.





SBAR JAZZ CLUB

Conversation flows easily at SBar, where the laid back atmosphere designed by Philippe Starck perfectly complements the sensuous notes of the live jazz music in the background. Share confidences with your confidantes, flirt with the charmer across the room and linger long past your bedtime.

SEE LEGAL DISCLAIMERS ON BACK COVER

MARKUS LINNENBRINK

SLS Parking Garage Facade Art Installation

German native Markus Linnenbrink, born in 1961, is a contemporary artist who lives in Brooklyn, New York. A student of painting at the Gesamthochschule in Kassel, Germany and at Berlin's Fine Arts University, the Hochschule der Künste, Linnenbrink has had numerous solo and group exhibitions worldwide, including across Europe and the United States, and in South Korea. His work has also been shown in group exhibitions in Australia, Israel, Brazil. Linnenbrink's work is in the permanent collections of The Hague Ministry of Culture, the Harvard Business School, the Hood Museum of Art, Museum Neue Galerie in Germany, the San Francisco Museum of Modern Art, the San Jose Museum of Art, and UCLA's Hammer Museum, among others.

Linnenbrink's approach to his art – especially site-specific work – is to do very simple things over and over to create density, layers and context. With help from gravity and materials, the process unfolds in various and sometimes unexpected ways, inspiring new directions for paintings, sculptures and installations. Seeking out surprising, unusual and satisfying collections of individual colors is a challenge that drives his work. He pursues the bigger context of the personal and seeks to reveal the logical side of the sensual.





KATJA LOHER

Video Art Installation

The work of New York-based Swiss artists Katja Loher has appeared in numerous solo and group exhibitions around the world, including in Brazil, Israel, Italy, China, Japan, the United States, Russia, and Switzerland. She exhibited at the Venice Architecture Biennale in 2010 and Art40 Basel in 2008. Her work is featured in many private and public collections, including the Credit Suisse Collection in Geneva, the eN Arts Collection in Tokyo, and the Horsecross Collection in Perth. In recent years she has received several awards, including TPC CreaTVty Award from the Swiss TV Production Center (2004), and has done artist residencies in New York, Berlin, and Beijing.

Loher's sculptural video works address a field of tension between escapist fantasy and oppressive reality. Her surreal worlds are populated by realistic figures that tumble about virtual spaces and appear to be intent on preventing ecological collapse. Androgynous dancers evoke fairies and - in performing the artificial pollination of plants or even photosynthesis - strive to conserve the natural basis of human existence.

Inspired by Pablo Neruda's Book of Questions, since 2005 Loher has been addressing the human basis of existence. Her complex video collages demonstrate metaphorically the far-reaching consequences of poetic questions such as, "Why did the bees leave?" Loher occasionally transforms questions into textual images by choreographing dancers to form letters, which she then combines into words. And usually the words she has composed in her Videoalphabet are embedded in scenographies whose arc of suspense provides a contrast to the unfolding sentence or phrase and its possible interpretation.







ARTIST CONCEPTUAL RENDERING

SEE LEGAL DISCLAIMERS ON BACK COVER

KATSUYA

by STARCY



singularly **LOVELY**
spaces

Designer Ready Luxury Residences



ART-INFUSED *residential lobby*

The SLS Residences Lobby is an art-infused destination unto itself where service and style come together with every arrival. SLS Brickell commissioned celebrated contemporary artist Markus Linnenbrink to design an original art installation of painted walls and ceilings, creating a dynamic, gallery-like atmosphere. It is the perfect overture to the pampered world of SLS, where your every whim is satisfied, whether it's arranging an important business conference venue or walking your precious pooch; no wish is too large or too small. Welcome to the splendid life of SLS Brickell.



LUXURY *on high*

The lights of Miami's skyline bring dramatic glamour to evening views from the hotel rooms and residences.



ARTIST CONCEPTUAL RENDERING

SEE LEGAL DISCLAIMERS ON BACK COVER







THE SLS BRICKELL *residences*

The private residences at SLS Brickell clad in floor to ceiling glass windows and doors, rise above the SLS Hotel to occupy the premium floors. While enjoying panoramic views, and all of the comfort and conveniences of life in a 5-star hotel, residents maintain their privacy by entering through the residential lobby with exclusive access to private residential elevators. Contemporary interiors and generous terraces set the stage for a truly elevated lifestyle.

SEE LEGAL DISCLAIMERS ON BACK COVER





start
LIVING
sensationally

Pool Terrace, Lounge, Fitness & Spa

ONE *acre of* AMENITIES



ARTIST CONCEPTUAL RENDERING

GARDEN CLUB LEVEL

SEE LEGAL DISCLAIMERS ON BACK COVER





SEE LEGAL DISCLAIMERS ON BACK COVER



LUX *Retreat* CABANAS

Step into a Lux Retreat Cabana and relax on teak furnishings under the gentle breeze of a ceiling fan. Be entertained with an array of high-tech amenities, including complimentary WiFi, a television with video on demand, a DVD player, and an iPad player. Enjoy your personal mini-bar filled with fresh fruit, fruit popsicles, and refreshing drinks or order from Hyde poolside menu. Take a swim and then wrap up in a comfy SLS robe and read from the day's selection of complimentary newspapers and magazines.

the infinity
MARATHON
pool





MAKE A SPLASH

The SLS Pool Terrace is far more than just a place to swim the days away. Downtown Miami's dynamic all-day all-night all-fun pool deck is a part of the sexy and sophisticated SLS experience. With luxurious sunbeds and cabanas, an outdoor lounge with a firepit, poolside drinks, and music to liven up the days and nights, it's a club scene with a very appealing dress code made just for Miami. Looking for some sustenance to keep your energy going? Enjoy a poolside snack by chef José Andrés.





HYDE LOUNGE

sexy from sunup to sundown...and sunup again

From its legendary origins in Hollywood as “the most exclusive club in America” to its game changing expansion nationwide, Hyde Lounge has redefined the nightlife experience for a global clientele that includes the highest-profile personalities, athletes and artists. Throughout its evolution, Hyde has always stood for the finest in service, design, programming, mixology and cuisine, and will soon be debuting that experience on SLS Brickell’s seductive pool terrace. As day gives way to night, Hyde at SLS Brickell will transform seamlessly from a chic and casual lounge into a bastion for Miami’s sexiest revelers.

splendid **LOVELY** *shape*

Strive to stay in shape at the state-of-the-art Fitness Center, located next to Ciel Spa. Total health and wellness opportunities include Technogym® Cardio & Weight Training equipment and a Technogym Kinesis® Wall, as well as cardio machines with personal plasma television/music options. The fitness center was designed with individual needs in mind, and condominium residents and guests will find no shortage of assistance as they begin their fitness journey. Allow the SLS Fitness Center to be your guide, introducing you to the exclusive “Kinesis® Personal” fitness stations to create a truly personalized workout. Free weights, stretching mats, Pilates balls, yoga mats, and headphones will be available for complimentary use. The resident SLS trainer will be on hand to cater to your every whim. Every comfort and every convenience is yours with every visit to SLS.

SEE LEGAL DISCLAIMERS ON BACK COVER





CIEL SPA *at* SLS

Escape to Ciel to recharge your spirit with pampering treatments and spa cuisine by chef José Andrés. Share the pleasure of personalized attention in couples' rooms, or seek inner tranquility all on your own. Massage beds with iPod docks let you drift away to soothing tunes, experience showers and an herbal steam room are designed with an unerring eye for luxury.

SEE LEGAL DISCLAIMERS ON BACK COVER



Photography by **MATTHEW ROLSTON**
GOLDEN HOURS, BEVERLY HILLS, 2012



PRIVATE HAPPENINGS & *movie screenings*

Put up the velvet rope for your own private parties in the SLS Party Room or host an exclusive movie night in the SLS Screening Room. Passed hors d'oeuvres, sit-down dinners, or top shelf bar service, along with flowers, lighting and other atmosphere enhancers can all be organized through SLS catering and event departments.

SEE LEGAL DISCLAIMERS ON BACK COVER





BALLROOM BASHES *and business affairs*

Screen your new movie, marry your sweetie, or host an entirely more stylish corporate event in SLS Brickell's 10,000 thousand square foot ballroom and business space. Take care of all those pesky pre- and post-event details in our state-of-the-art business center, or delegate to our event team and leave the planning to us.

SEE LEGAL DISCLAIMERS ON BACK COVER







VIP ACCESS *to miami's hottest beach club*

Luxury comes with you to the white hot scene of Miami Beach, compliments of VIP Beach access to SLS Hotel South BEach. Cabanas, lounges and fresh towels await you in sublime comfort to lounge the days away. Seaside beverage and snack service keeps the party going until the sun sets into the Miami skyline.



BREATHTAKING VIEWS
FROM THE
sky roof
POOL







ARTIST CONCEPTUAL RENDERING

SEE LEGAL DISCLOSURES ON BACK COVER



*private SKY
private POOL*





SKY ROOF *retreat*

See the sunrise, swim in tranquil waters far above the city, feast on catered delicacies from José Andrés' cuisine, watch the sunset, and do it all over again the next day. The tranquil atmosphere of the Sky Roof, exclusively for the SLS condominium residents, gives you a whole new perspective on life in Miami.

superb
LEADERSHIP
skills



be prepared FOR THE BEST HOTEL AND RESIDENCES *delivered by Related and sbe*

SEE LEGAL DISCLAIMERS ON BACK COVER



“SLS BRICKELL HAS BEEN DESIGNED AS A CONTEMPORARY TROPICAL PARADISE GLAMOROUS AND CHIC WITH INCOMPARABLE VIEWS OVER THE SKYLINE AND SEA.”

JORGE M. PÉREZ



ICON VALLARTA, *Mexico*

THE RELATED GROUP

Jorge M. Pérez is the founder, Chairman, and CEO of The Related Group, the nation's leading developer of multi-family residences. In August 2005, TIME Magazine named Mr. Pérez one of the top 25 most influential Hispanic people in the United States.

Under his direction, The Related Group and its affiliates have redefined the South Florida landscape. Since its inception more than a quarter of a century ago, the firm has developed and/or managed more than 55,000 apartments and condominium residences. The Related Group is one of the largest Hispanic-owned businesses in the United States. In 2006, the company reported sales of more than \$1.4 billion. Its current portfolio represents assets under development of more than \$10.7 billion.

Mr. Pérez serves on the Board of Directors of the Miami Art Museum, and is spearheading the capital campaign for its new Museum Park location in Miami's Bicentennial Park. He chairs the Miami-Dade Cultural Affairs Council and is a member of the University of Miami's Board of Trustees.

Mr. Pérez has received numerous awards for his professional and philanthropic achievements, including Builder of the Year, from Multifamily Executive; Ernst & Young's Entrepreneur of the Year; and the "Sand In My Shoes" award from the Greater Miami Chamber of Commerce. The Developers and Builders Alliance honored him with its most exalted award, the 2006 Community Advancement Award. In Cannes, France, Mr. Pérez received the "Icon in Real Estate Award of Excellence" at MIPIM. Most recently, he was the recipient of the Urban Land Institute's "Southeast Florida Lifetime Achievement Award" and the National Building Museum's "Annual Honor Award" for his contribution to architecture and design.



TRUMP HOLLYWOOD, *Miami*



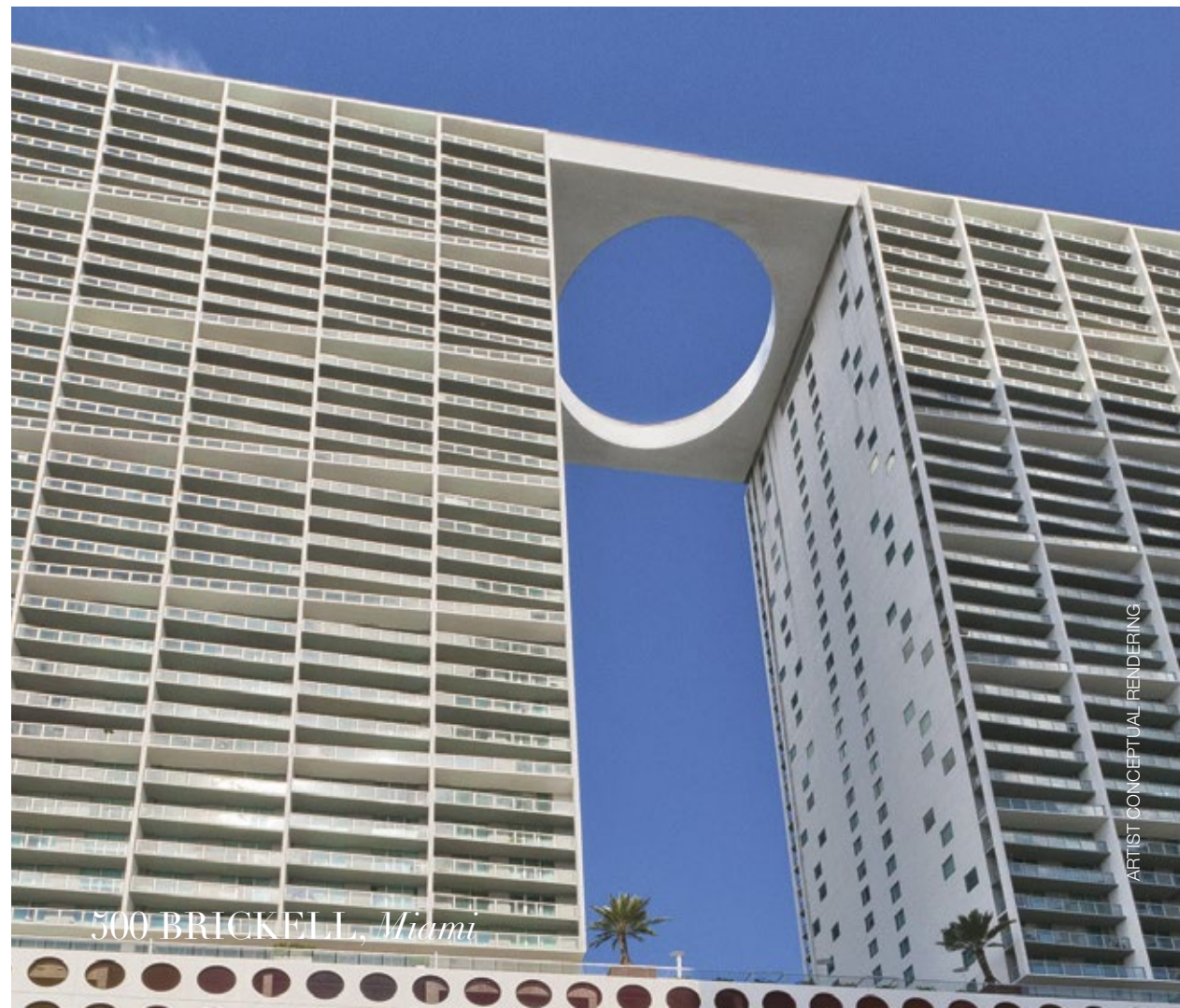
ST. REGIS, *Bal Harbor*



ICON BRICKELL, *Miami*



APOGEE, *Miami*



500 BRICKELL, *Miami*

ARTIST CONCEPTUAL RENDERING



SLS Las Vegas



ARTIST CONCEPTUAL RENDERING

SLS Beverly Hills



SLS South Beach

“SLS HAS HAD AN UNDENIABLE IMPACT ON HOSPITALITY WITH A ‘NEW IDEA’ THAT SPEAKS TO A GLOBAL COMMUNITY.

THE RELEVANCE OF THE SLS HOTELS LIFESTYLE HAS GROWN FROM BEVERLY HILLS TO SOUTH BEACH, LAS VEGAS, SEATTLE, MANHATTAN AND NOW DOWNTOWN MIAMI.”

SAM NAZARIAN

sbe

Founded by Sam Nazarian, sbe was born in Hollywood with a vision to revolutionize hospitality. After a decade of growth, vision has become reality as evidenced by an award-winning collection of over 70 hotel, restaurant, nightlife and casino destinations worldwide. Through exclusive partnerships with cultural visionaries such as Philippe Starck and chef José Andrés, sbe is dedicated to delivering the best in design, culinary and entertainment, and has initiated the global expansion of its flagship brands: SLS Hotels, Katsuya by Starck, The Bazaar by José Andrés and Hyde Lounge.

PHILIPPE STARCK

To discover an object or a place designed by Philippe Starck is to enter a world of wall-to-wall imagination, surprises and fabulous fantasy. Starck designs in the same way a director makes a film. He develops scenarios that will lift people out of the everyday and into an imaginative and creative world. Starck is a tireless and rebellious citizen of the world who considers it his duty to share his ethical and subversive vision of a fairer world. He stays tuned in to our dreams, desires and needs - sometimes before we get there ourselves - by making his work a political and civic act, which he accomplishes with love, poetry and humor.

SEE LEGAL DISCLAIMERS ON BACK COVER



LE BAR DU ROYAL MONCEAU, *Paris*



ICON BRICKELL, *Miami*



FAENA HOTEL, *Buenos Aires*



MISS KO, *Paris*

“SLS BRICKELL HAS BEEN DESIGNED AS A CONTEMPORARY TROPICAL PARADISE GLAMOROUS AND CHIC WITH INCOMPARABLE VIEWS OVER THE SKYLINE AND SEA.”

BERNARDO FORT-BRESCIA



ORCHARD SCOTTS, *Singapore*

ARQUITECTONICA

Arquitectonica is a Miami-based firm with multiple offices across North America, Latin America, Europe, Asia and the Middle East. Founded in 1977, it is led by Bernardo Fort-Brescia and Laurinda Spear. Its work – which includes mixed-use developments, resorts, hotels, luxury condominiums, schools, universities and museums – has been featured in leading design and business publications including Architectural Record, Progressive Architecture, Time, Fortune, Abitare and Domus. Its designs have also been exhibited in major museums across the world. In 2004 Rizzoli Press published a monograph on the firm’s work.

SEE LEGAL DISCLAIMERS ON BACK COVER



PARAMOUNT BAY, MIAMI, *Miami*



SAIWAN TERRACE, *Hong Kong*



ICON BRICKELL, *Miami*



REGALIA, *Miami*

ARTIST CONCEPTUAL RENDERING

singularly
LUXURIOUS
spaces



building FEATURES

BUILDING FEATURES & AMENITIES

- Stunning 52-story tower designed by international renowned architectural firm Arquitectonica; located in the heart of Brickell on the crossroads of Coral Way (13th Street) and South Miami.
- SLS Hotel & Residences Brickell is masterfully conceived to house an eclectic array of restaurants by celebrated chefs José Andrés, Katsuya Uechi and Michael Schwartz and live entertainment compliments of SBar Jazz Lounge; all topped off by impeccable designer ready condominium residences.
- SLS Hotel Brickell features a dramatic Philippe Starck Hotel lobby and 132 rooms and suites in the first eight levels of the tower.
- Above the hotel, 42 floors of high-design condominiums feature extraordinary contemporary finishes and state-of-the-art amenities with a limited collection of Penthouse residences on the top four floors with custom gourmet kitchens by José Andrés, spa-inspired bathrooms with sculpted tubs, and panoramic skyline, ocean, and bay views.
- Exclusive condominium residential double volume lobby exhibiting original installations by contemporary artists Markus Linnenbrink and Katja Loher, provide a testament to Miami's internationally renowned art scene.
- Direct private access to the condominium residents via high speed elevators off the residential lobby.
- Assigned self-parking at 8-story secured parking garage with direct access from the street or optional complimentary 24- valet parking services.
- Luxuriously landscaped 9th Level Pool Terrace with private cabanas, a 200 feet long infinity heated pool and alfresco dining, sumptuously catered by the Hyde Lounge. The surrounding terrace overlooking South Miami Avenue evoking the feeling of a cruise ship over the bustling Miami scene.
- Roof top Sky Pool deck with breathtaking views of the Bay and the City skyline, for exclusive use of the condominium residents with catered delicacies from Chef José Andrés cuisine.
- SLS's state-of-the-art health and wellness fitness center, located next to Ciel Spa. Total health and wellness opportunities include Technogym® Cardio & Weight Training equipment and a Technogym Kinesis® Wall, as well as cardio machines with personal plasma television/music options. Exclusive "Kinesis® Personal" fitness stations create personalized workouts. Free weights, stretching mats, Pilates balls, yoga mats, and headphones are all available for complimentary use. The resident SLS trainer is on hand to cater to residents' every whim.
- Ciel Spa at SLS featuring pampering treatments and spa cuisine by chef José Andrés. Massage beds with iPod docks, experience showers and herbal steam room are some of the luxurious conveniences.
- SLS Screening Room for exclusive private home theater happenings enhanced with catered cuisine and bar service through SLS catering and event departments.
- 10,000 square foot ballroom and state-of-the-art business center expertly managed by SLS Brickell and available to condominium residents for their every social and business affair.
- The latest in "Smart Building" technology, featuring wireless control pad, linking residents to concierge services and hotel building amenities.
- SLS Concierge Service on demand featuring around-the-clock multilingual staff, 24-hour valet parking, 24-hour security service, in-room dining service and personal chef, world-class concierge services, full service business center with wireless high-speed internet access, and visual equipment, private catering for meetings, luncheons and dinner parties, shipping and packaging services, currency conversion and exchange services, full-time maintenance staff and housekeeping, pre-arrival provisioning-grocery shopping and delivery, dry cleaning and laundry services, nanny/babysitting services, plant maintenance, overnight shoeshine, pet services, preferred theatre and event tickets, courier services, personal IT support assistance, translation services and newspaper delivery.
- Exclusive BMW-7 series limousine service for night rentals and airport pick-ups. The luxury BMW house car is available for transport within a two-to-three-mile radius.
- VIP Access to South Beach's hottest beach club, Hyde Beach at the SLS Hotel South Beach with lounges, beach and pool towel services, cabanas, and seaside snack and beverage services.

residences

FEATURES

IMPECCABLE RESIDENCES

- Expertly designed floor plans for maximum efficient use of spaces and views
- Residences delivered decorator ready to afford maximum flexibility in interior design
- Floor-to-ceiling walls of tinted glass lining all residences' exterior walls
- Elegant foyers on select residences
- Spacious terraces with glass & aluminum railings directly accessible from living areas and bedrooms of every residence thru floor to ceiling sliding glass doors and wrap around terraces in all corner units
- Expanded terrace extension as part of the design element of the tower in select floors
- Nine-foot high smooth-finish ceilings in living spaces, rising to twelve feet in Penthouse Residences
- High-efficiency central air conditioning and heating systems
- Spacious walk-in closets
- Pre-wired for high-speed communications, multiple telephone lines and cable
- Touch-screen monitor for direct access to concierge services and the full array of services and amenities of the SLS Brickell Hotel

SLEEK KITCHENS

- Open concept design to the living dining room with convenient breakfast bar
- European custom cabinetry with a selection of finishes and choices of quartz counter tops with optional full backsplashes
- Stainless steel, under mount oversized zero radius square edge sink with single lever European- style pullout faucet sprayer
- Sub-Zero fully integrated refrigerator-freezer with cabinetry matching front panels (36" in Lines 01, 05 and 06 and 27" in Lines 02, 03, 04, 07, 08, 09, 10 and 11)
- Bosch 30" PreciseSelect touch-control glass cook top with 17 settings for unprecedented temperature control
- Cabinet concealed variable speed range hood
- Bosch 30" built-in contemporary style stainless steel wall oven with ClearTouch glass control and large 4.7 oven capacity
- Bosch European Style Stainless interior exceptionally quiet dishwasher with fully integrated cabinetry matching front panel
- Concealed Built-in microwave
- Large capacity stackable washer and dryer

FINE BATHS

- Premium European style cabinetry with designer details, imported stone vanity tops and full size mirrors
- Double vessel bowl lavatories in master baths in select residences
- Elongated water closet
- Spacious soaking tubs and frameless glass enclosed showers in master baths in select residences
- European-style bidet in select residences
- Imported porcelain flooring, base and walls in wet areas
- Designer faucets
- Powder Room in Select Residences



hotel ON DEMAND

EXCLUSIVE SLS CONCIERGE SERVICES ON DEMAND

- Exclusive BMW-7 series limousine available for night rentals and airport pick ups. No need to take a taxi - travel in style with our luxury BMW house car, available for transport within a three-mile radius.
- In-Room iPads We're plugged in and wireless with visual and audio (MP3) connectivity, WiFi throughout the hotel and an iPad in each room.
- Around-the-clock multilingual staff
- 24-hour valet parking
- 24-hour security service
- In-room dining services and personal chef available upon request
- World-class concierge services
- Full service business center with wireless high-speed internet access, and visual equipment
- Private catering for meetings, luncheons and dinner parties
- Shipping and packaging services
- Currency conversion and exchange services
- Full-time maintenance staff
- Preferred access and signing privileges for owners to top golf courses in Vallarta
- Housekeeping on demand
- Pre-arrival provisioning-grocery shopping and delivery
- Dry cleaning and laundry services
- Nanny/babysitting services
- Plant maintenance
- Overnight shoeshine
- Pet services
- Preferred theatre and event tickets
- Courier services
- Personal IT support assistance
- Translation services
- Newspaper delivery

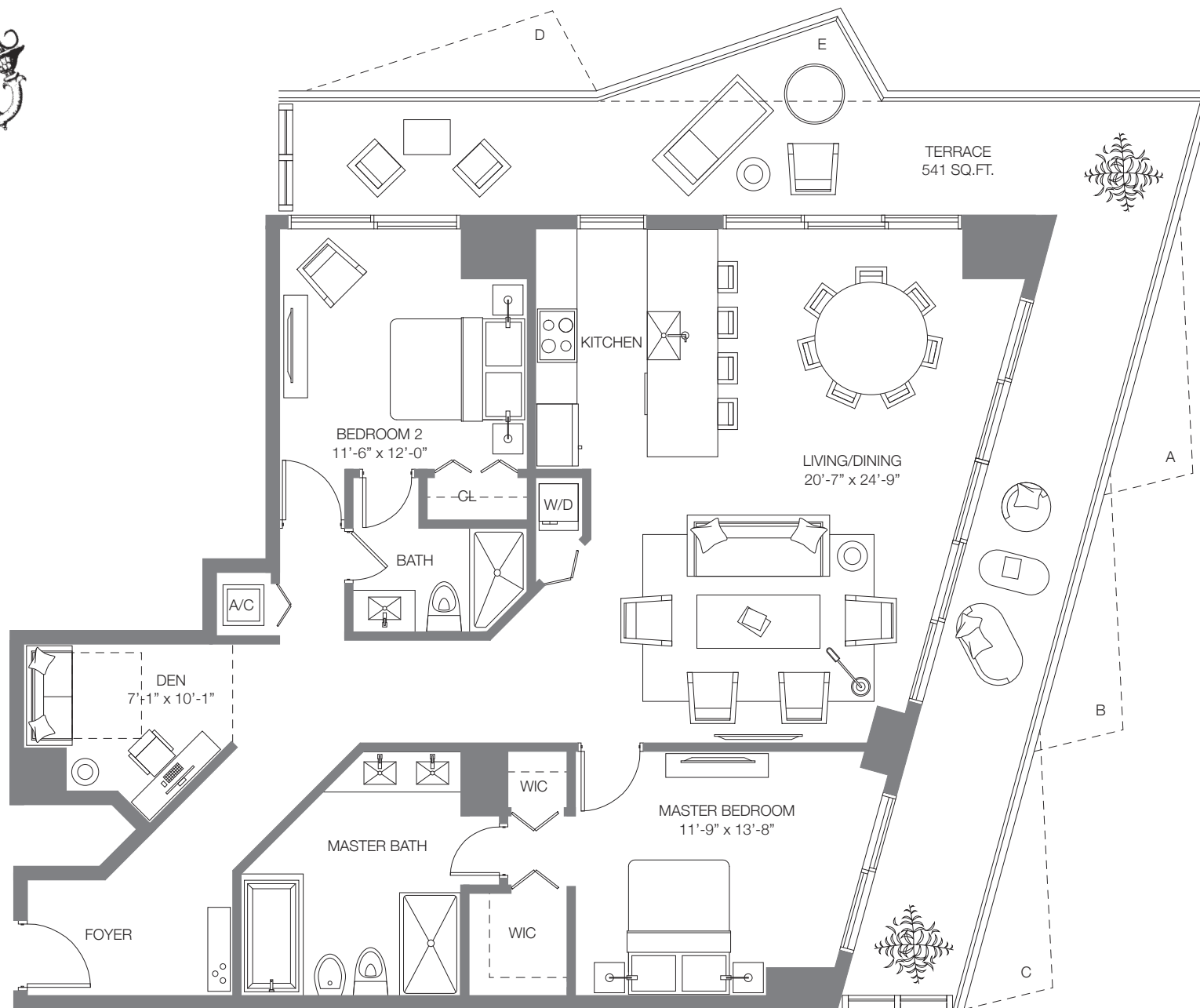
MEETINGS & EVENTS

- From an exclusive gathering to a lavish press event, SLS events far exceed the norm. Choose from a full menu of services and 10,000 square feet of flexible Philippe Starck-designed event space and suites.
- Customized menus from Chef José Andrés, Katsuya Uechi and Michael Schwartz
- Experienced event and catering specialists
- Preferred room rate and room block for guests
- 24-hour full-scale AV expertise and capabilities
- Property-wide WiFi access, telephone and web conferencing
- Post-conference shipping
- Concierge services
- Multilingual staff

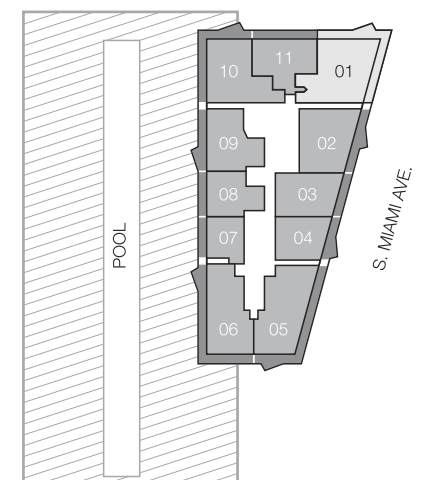
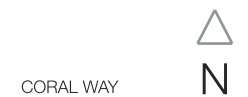


residences

FLOOR PLANS



TERRACE EXTENSION 27 SQ. FT.
 A. FLOORS 15, 20, 25, 30, 35, 40, 45, 50
 B. FLOORS 14, 19, 24, 29, 34, 39, 44, 49
 C. FLOORS 12, 18, 23, 28, 33, 38, 43, 48
 D. FLOORS 11, 17, 22, 27, 32, 37, 42, 47
 E. FLOORS 10, 16, 21, 26, 31, 36, 41, 46

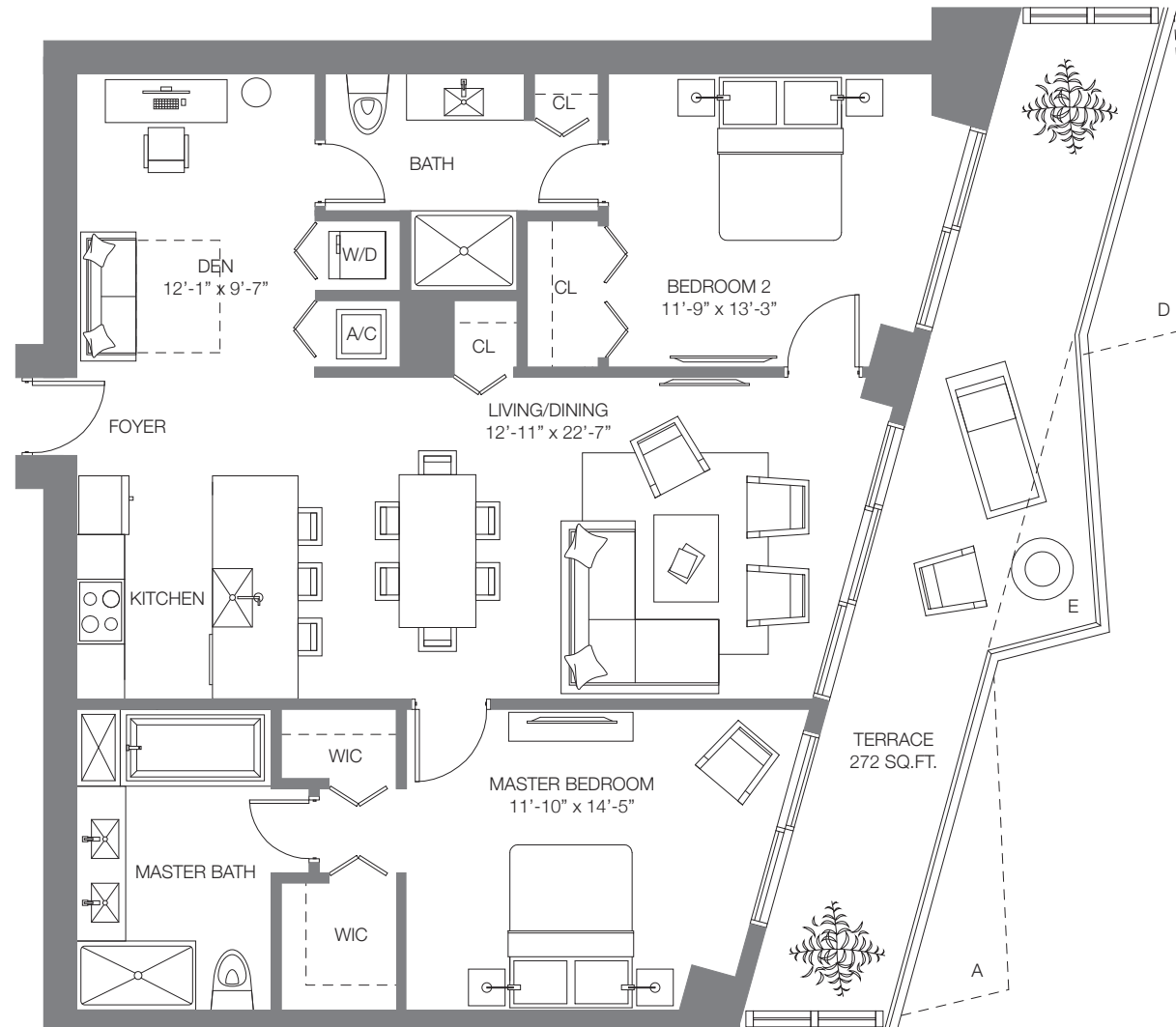
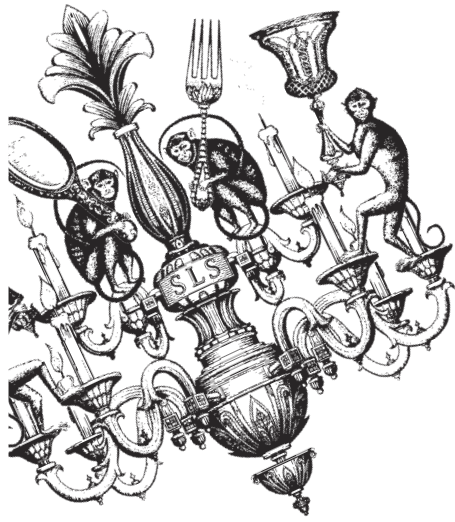


SLS RESIDENCE 01

2 BEDROOMS & DEN / 2 BATHS

A/C INTERIOR AREA	1,495 SQ. FT.	138.89 SQ. M.
TERRACE W/EXTENSION AREA	541 SQ. FT.	50.26 SQ. M.
TOTAL RESIDENCE	2,036 SQ. FT.	189.15 SQ. M.

Stated dimensions are measured to the exterior boundaries of the exterior walls and the centerline of interior demising walls and in fact vary from the dimensions that would be determined by using the description and definition of the "Unit" set forth in the Declaration (which generally only includes the interior airspace between the perimeter walls and excludes interior structural components). For your reference, the area of the Unit, determined in accordance with those defined unit boundaries, is + or - 1,305 sq. ft. for units 01. Note that measurements of rooms set forth on this floor plan are generally taken at the greatest points of each given room (as if the room were a perfect rectangle), without regard for any cutouts. Accordingly, the area of the actual room will typically be smaller than the product obtained by multiplying the stated length times width. All dimensions are approximate and may vary with actual construction, and all floor plans and development plans are subject to change.



TERRACE EXTENSION 27 SQ. FT.
 A. FLOORS 15, 20, 25, 30, 35, 40, 45, 50
 D. FLOORS 11, 17, 22, 27, 32, 37, 42, 47
 E. FLOORS 10, 16, 21, 26, 31, 36, 41, 46

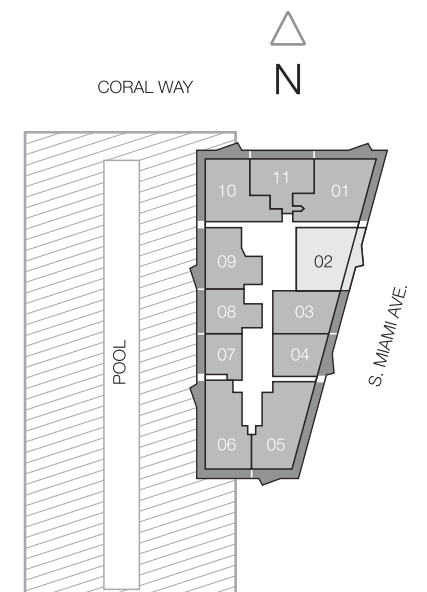
Floors not listed above do not have an extended terrace.
 Terrace without extension is 245 SQ. FT.

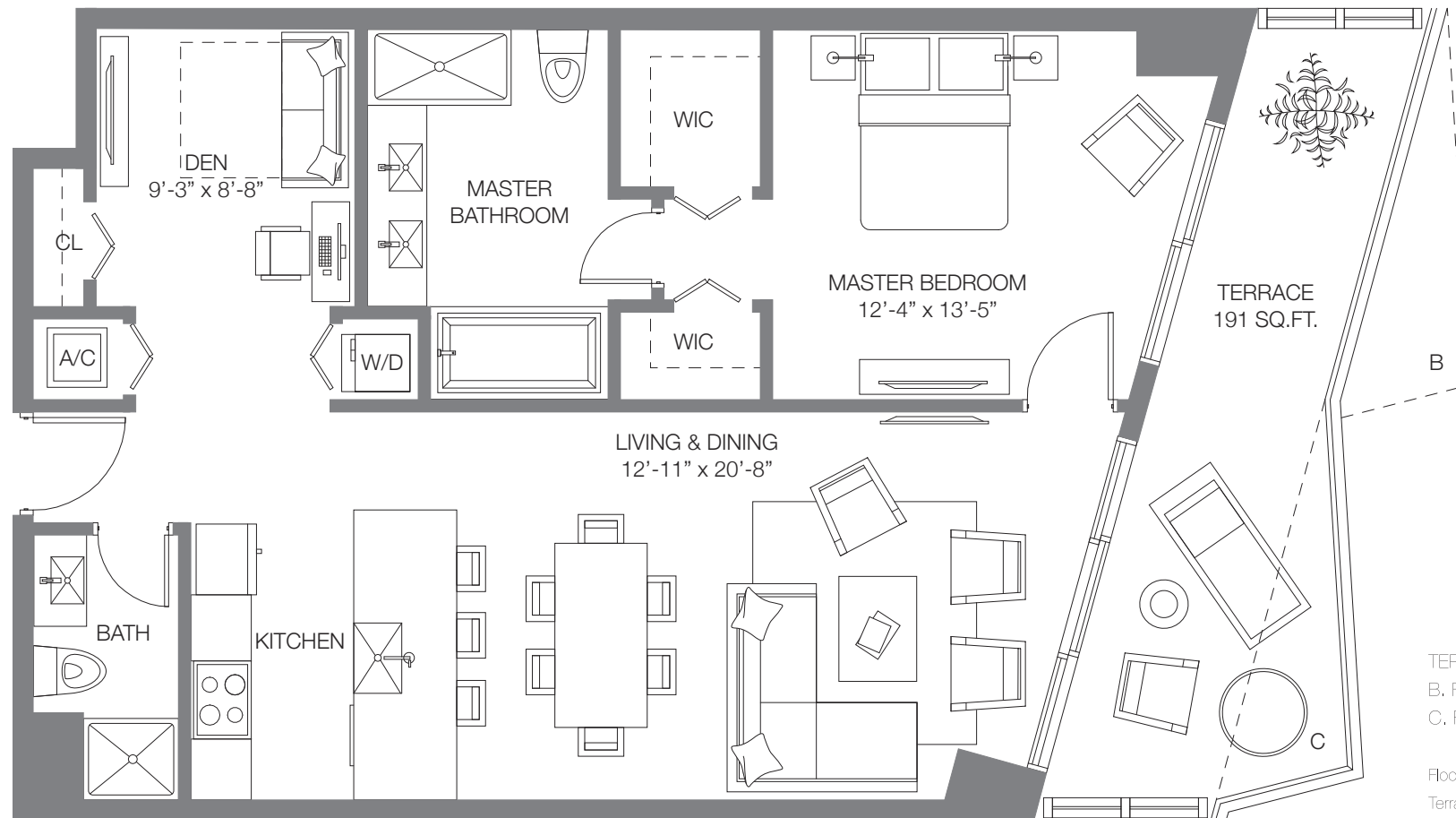
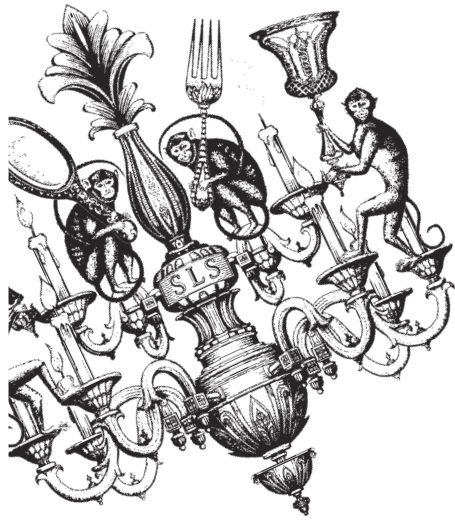
SLS RESIDENCE 02

2 BEDROOMS & DEN / 2 BATHS

A/C INTERIOR AREA	1,332 SQ. FT.	123.75 SQ. M.
TERRACE W/EXTENSION AREA	272 SQ. FT.	25.27 SQ. M.
TOTAL RESIDENCE	1,604 SQ. FT.	149.02 SQ. M.

Stated dimensions are measured to the exterior boundaries of the exterior walls and the centerline of interior demising walls and in fact vary from the dimensions that would be determined by using the description and definition of the "Unit" set forth in the Declaration (which generally only includes the interior airspace between the perimeter walls and excludes interior structural components). For your reference, the area of the Unit, determined in accordance with those defined unit boundaries, is + or - 1,139 sq. ft. for units 02. Note that measurements of rooms set forth on this floor plan are generally taken at the greatest points of each given room (as if the room were a perfect rectangle), without regard for any cutouts. Accordingly, the area of the actual room will typically be smaller than the product obtained by multiplying the stated length times width. All dimensions are approximate and may vary with actual construction, and all floor plans and development plans are subject to change.





TERRACE EXTENSION 27 SQ. FT.
 B. FLOORS 14, 19, 24, 29, 34, 39, 44, 49
 C. FLOORS 12, 18, 23, 28, 33, 38, 43, 48

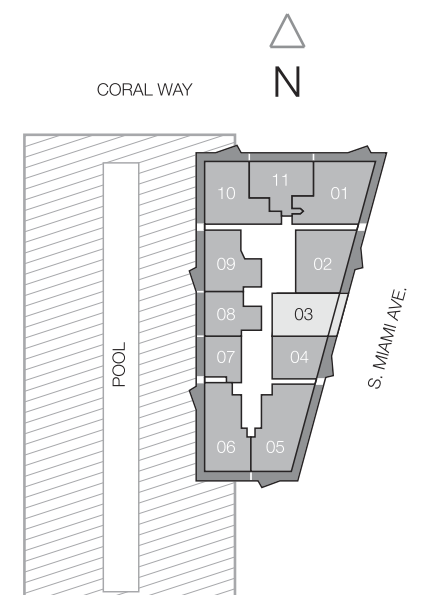
Floors not listed above do not have an extended terrace.
 Terrace without extension is 164 SQ. FT.

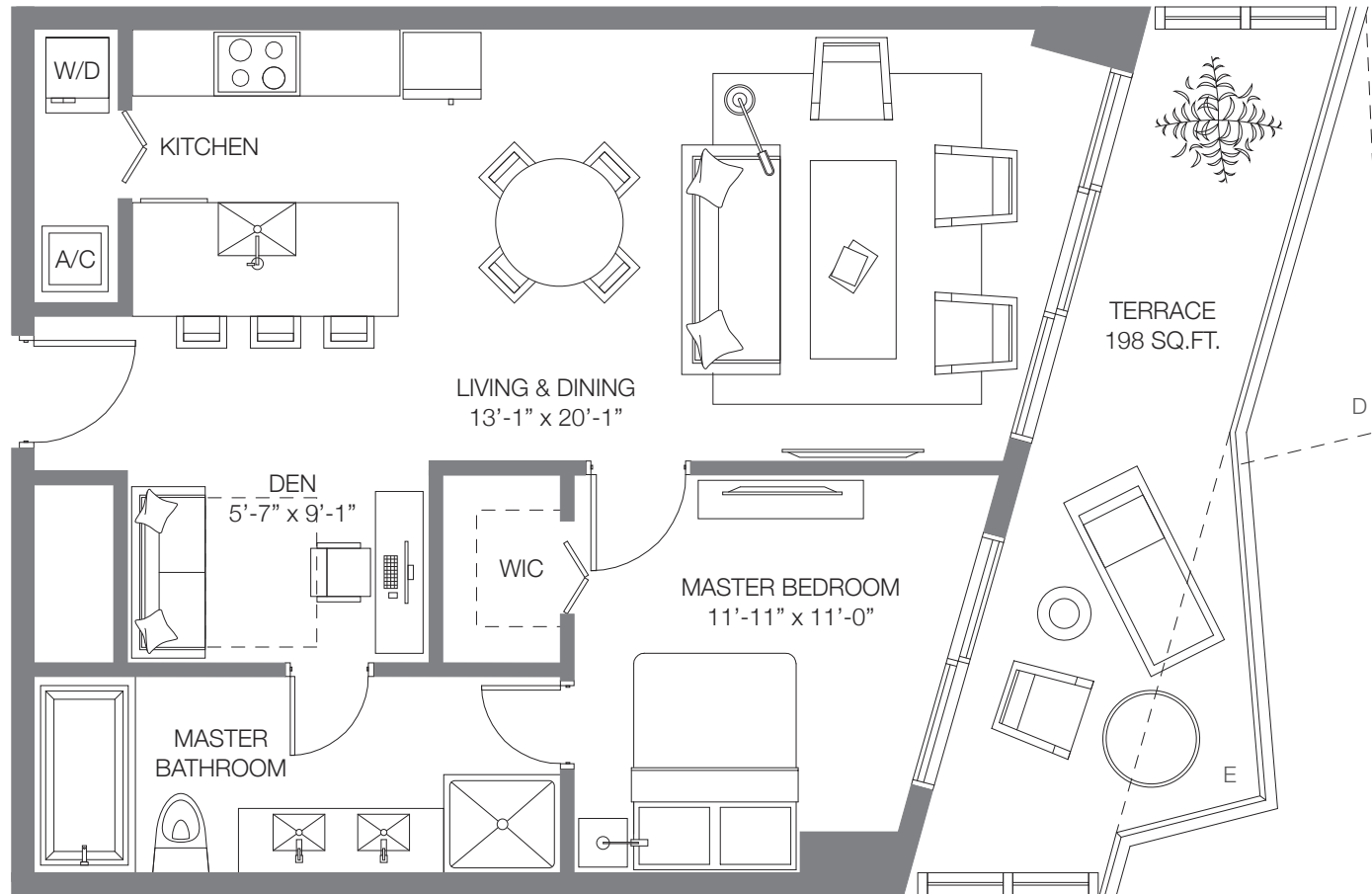
SLS RESIDENCE 03

1 BEDROOM & DEN / 2 BATHS

A/C INTERIOR AREA	995 SQ. FT.	92.43 SQ. M.
TERRACE W/EXTENSION AREA	191 SQ. FT.	17.74 SQ. M.
TOTAL RESIDENCE	1,186 SQ. FT.	110.17 SQ. M.

Stated dimensions are measured to the exterior boundaries of the exterior walls and the centerline of interior demising walls and in fact vary from the dimensions that would be determined by using the description and definition of the "Unit" set forth in the Declaration (which generally only includes the interior airspace between the perimeter walls and excludes interior structural components). For your reference, the area of the Unit, determined in accordance with those defined unit boundaries, is + or - 897 sq. ft. for units 03. Note that measurements of rooms set forth on this floor plan are generally taken at the greatest points of each given room (as if the room were a perfect rectangle), without regard for any cutouts. Accordingly, the area of the actual room will typically be smaller than the product obtained by multiplying the stated length times width. All dimensions are approximate and may vary with actual construction, and all floor plans and development plans are subject to change.





TERRACE EXTENSION 27 SQ. FT.
 D. FLOORS 11, 17, 22, 27, 32, 37, 42, 47
 E. FLOORS 10, 16, 21, 26, 31, 36, 41, 46

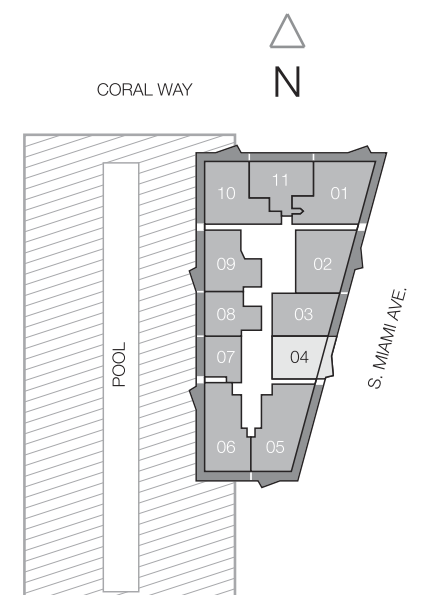
Floors not listed above do not have an extended terrace.
 Terrace without extension is 171 SQ. FT.

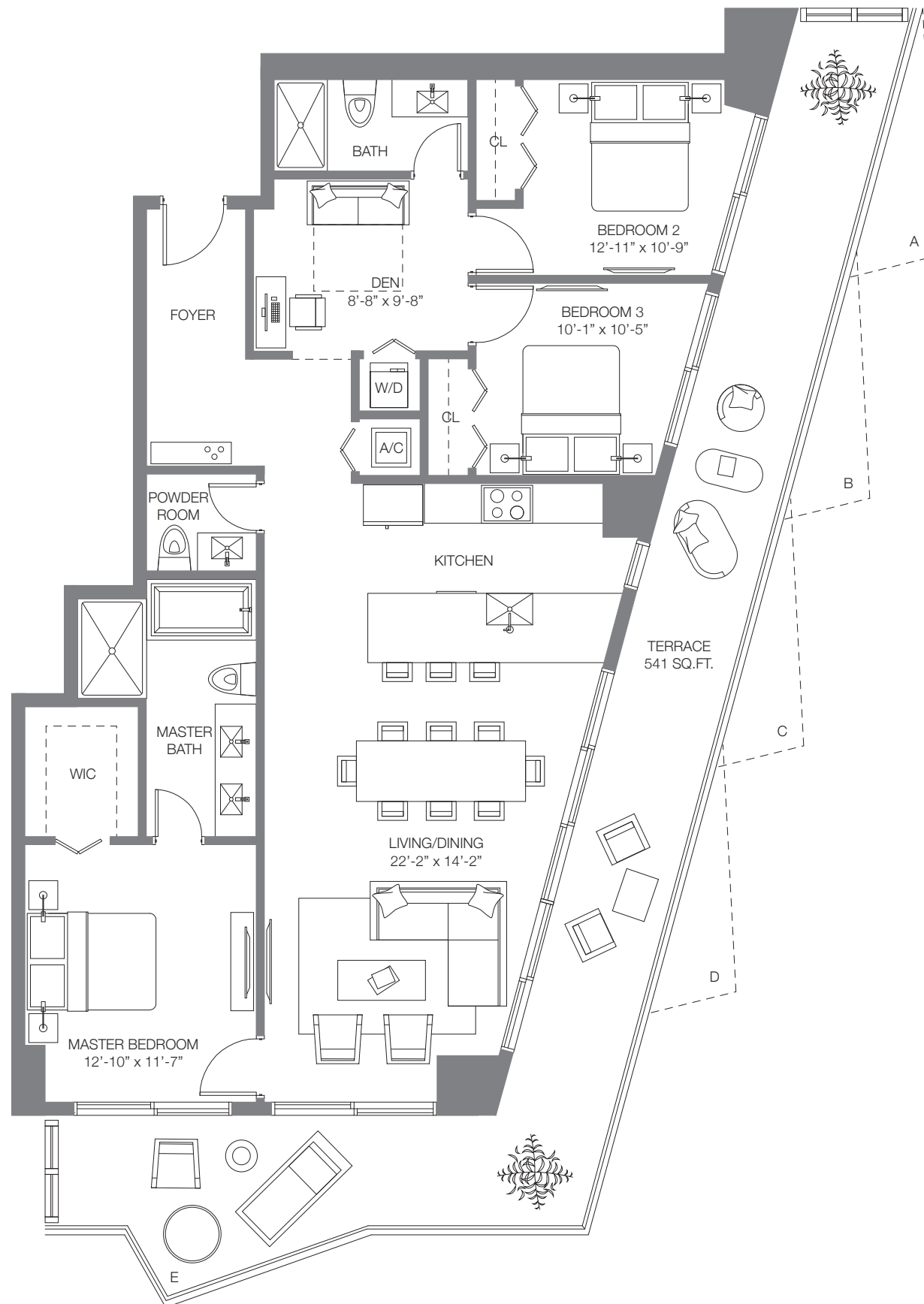
SLS RESIDENCE 04

1 BEDROOM & DEN / 1 BATH

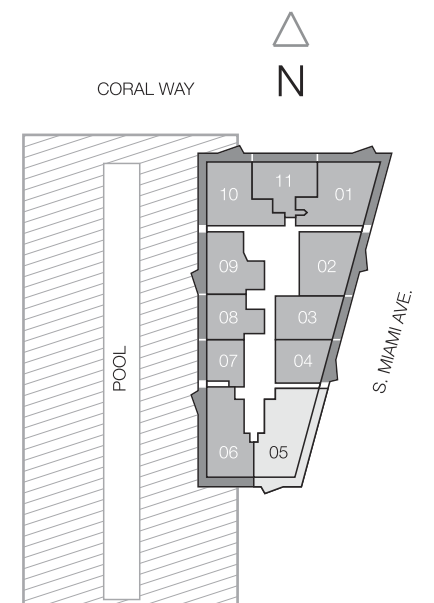
A/C INTERIOR AREA	810 SQ. FT.	75.25 SQ. M.
TERRACE W/EXTENSION AREA	198 SQ. FT.	18.39 SQ. M.
TOTAL RESIDENCE	1008 SQ. FT.	93.64 SQ. M.

Stated dimensions are measured to the exterior boundaries of the exterior walls and the centerline of interior demising walls and in fact vary from the dimensions that would be determined by using the description and definition of the "Unit" set forth in the Declaration (which generally only includes the interior airspace between the perimeter walls and excludes interior structural components). For your reference, the area of the Unit, determined in accordance with those defined unit boundaries, is + or - 713 sq. ft. for units 04. Note that measurements of rooms set forth on this floor plan are generally taken at the greatest points of each given room (as if the room were a perfect rectangle), without regard for any cutouts. Accordingly, the area of the actual room will typically be smaller than the product obtained by multiplying the stated length times width. All dimensions are approximate and may vary with actual construction, and all floor plans and development plans are subject to change.





TERRACE EXTENSION 27 SQ. FT.
 A. FLOORS 15, 20, 25, 30, 35, 40, 45, 50
 B. FLOORS 14, 19, 24, 29, 34, 39, 44, 49
 C. FLOORS 12, 18, 23, 28, 33, 38, 43, 48
 D. FLOORS 11, 17, 22, 27, 32, 37, 42, 47
 E. FLOORS 10, 16, 21, 26, 31, 36, 41, 46

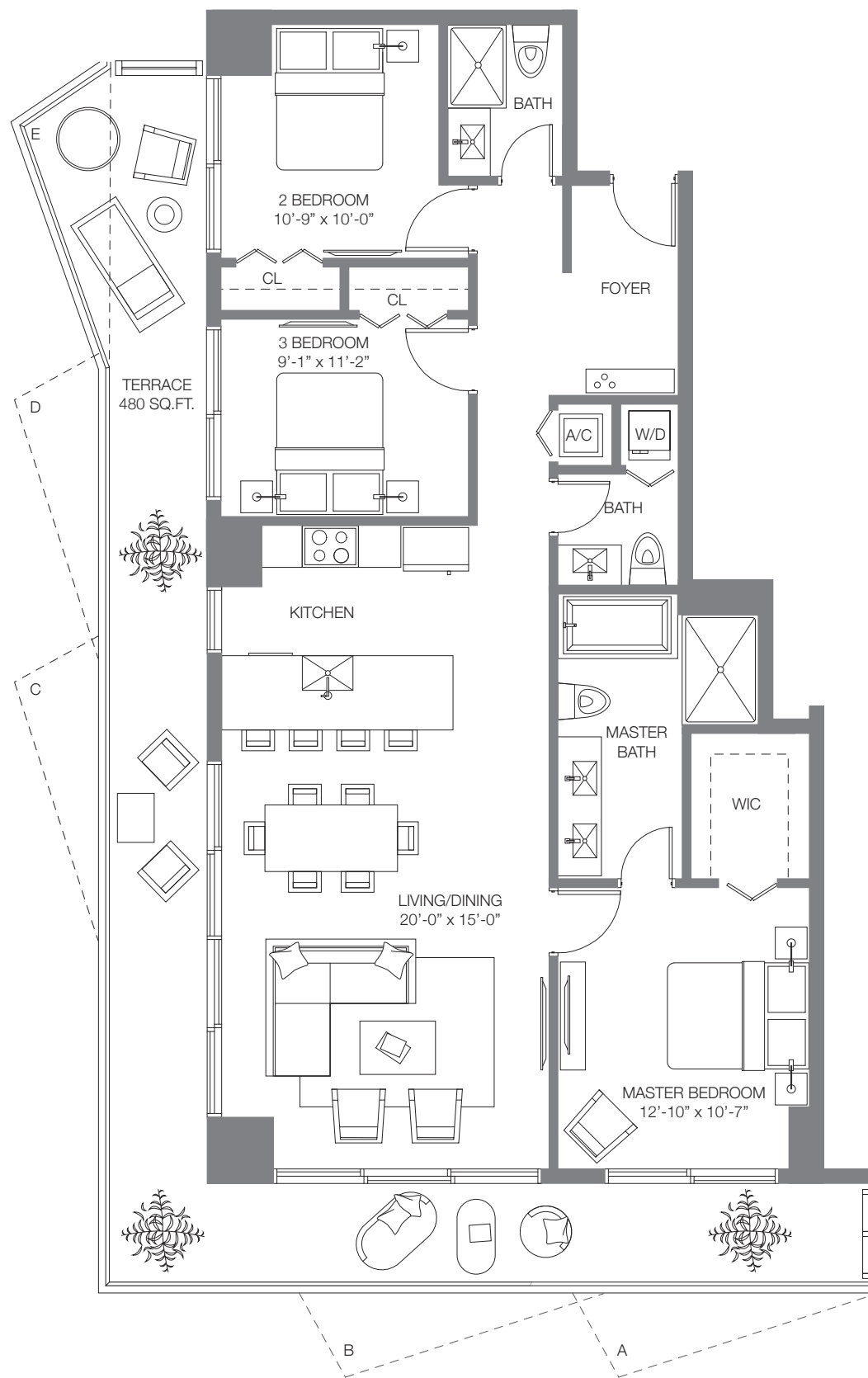


SLS RESIDENCE 05

3 BEDROOMS & DEN / 2 ½ BATHS

A/C INTERIOR AREA	1,505 SQ. FT.	139.82 SQ. M.
TERRACE W/EXTENSION AREA	541 SQ. FT.	50.26 SQ. M.
TOTAL RESIDENCE	2,046 SQ. FT.	190.08 SQ. M.

Stated dimensions are measured to the exterior boundaries of the exterior walls and the centerline of interior demising walls and in fact vary from the dimensions that would be determined by using the description and definition of the "Unit" set forth in the Declaration (which generally only includes the interior airspace between the perimeter walls and excludes interior structural components). For your reference, the area of the Unit, determined in accordance with those defined unit boundaries, is + or - 1,298 sq. ft. for units 05. Note that measurements of rooms set forth on this floor plan are generally taken at the greatest points of each given room (as if the room were a perfect rectangle), without regard for any cutouts. Accordingly, the area of the actual room will typically be smaller than the product obtained by multiplying the stated length times width. All dimensions are approximate and may vary with actual construction, and all floor plans and development plans are subject to change.



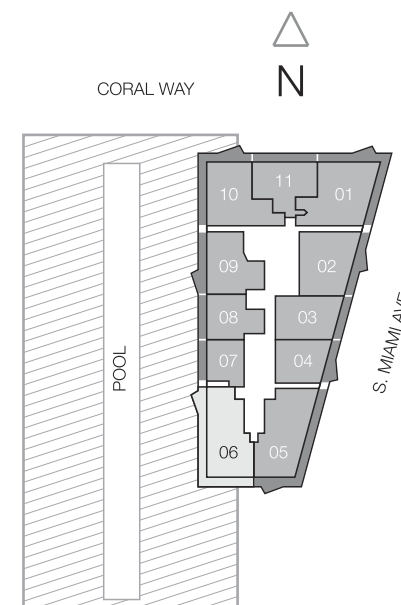
TERRACE EXTENSION 27 SQ. FT.
 A. FLOORS 15, 20, 25, 30, 35, 40, 45, 50
 B. FLOORS 14, 19, 24, 29, 34, 39, 44, 49
 C. FLOORS 12, 18, 23, 28, 33, 38, 43, 48
 D. FLOORS 11, 17, 22, 27, 32, 37, 42, 47
 E. FLOORS 10, 16, 21, 26, 31, 36, 41, 46

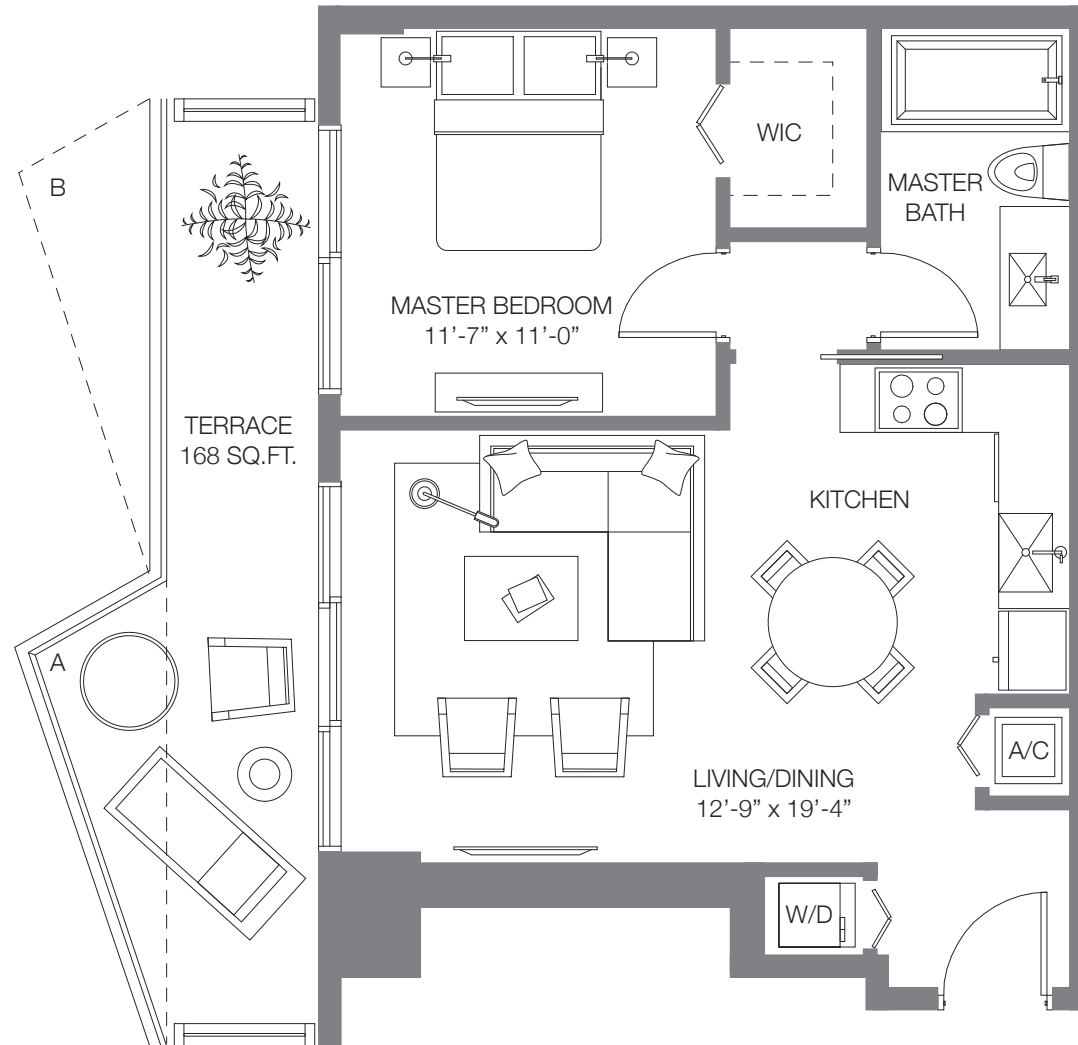
SLS RESIDENCE 06

3 BEDROOMS / 2 ½ BATHS

A/C INTERIOR AREA	1,346 SQ. FT.	125.05 SQ. M.
TERRACE W/EXTENSION AREA	480 SQ. FT.	44.59 SQ. M.
TOTAL RESIDENCE	1,826 SQ. FT.	169.64 SQ. M.

Stated dimensions are measured to the exterior boundaries of the exterior walls and the centerline of interior demising walls and in fact vary from the dimensions that would be determined by using the description and definition of the "Unit" set forth in the Declaration (which generally only includes the interior airspace between the perimeter walls and excludes interior structural components). For your reference, the area of the Unit, determined in accordance with those defined unit boundaries, is + or - 1,166 sq. ft. for units 06. Note that measurements of rooms set forth on this floor plan are generally taken at the greatest points of each given room (as if the room were a perfect rectangle), without regard for any cutouts. Accordingly, the area of the actual room will typically be smaller than the product obtained by multiplying the stated length times width. All dimensions are approximate and may vary with actual construction, and all floor plans and development plans are subject to change.





TERRACE EXTENSION 27 SQ. FT.
 A. FLOORS 15, 20, 25, 30, 35, 40, 45, 50
 B. FLOORS 14, 19, 24, 29, 34, 39, 44, 49

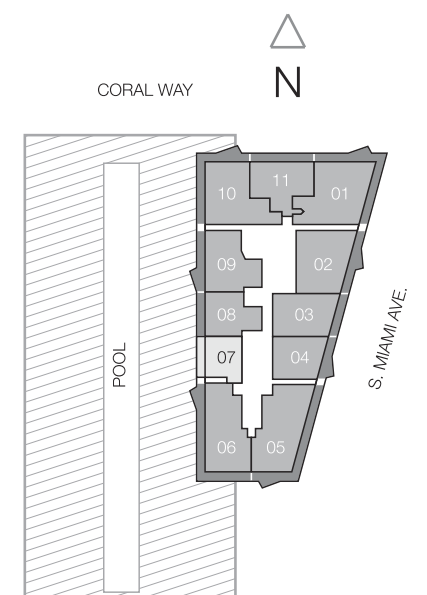
Floors not listed above do not have an extended terrace.
 Terrace without extension is 141 SQ. FT.

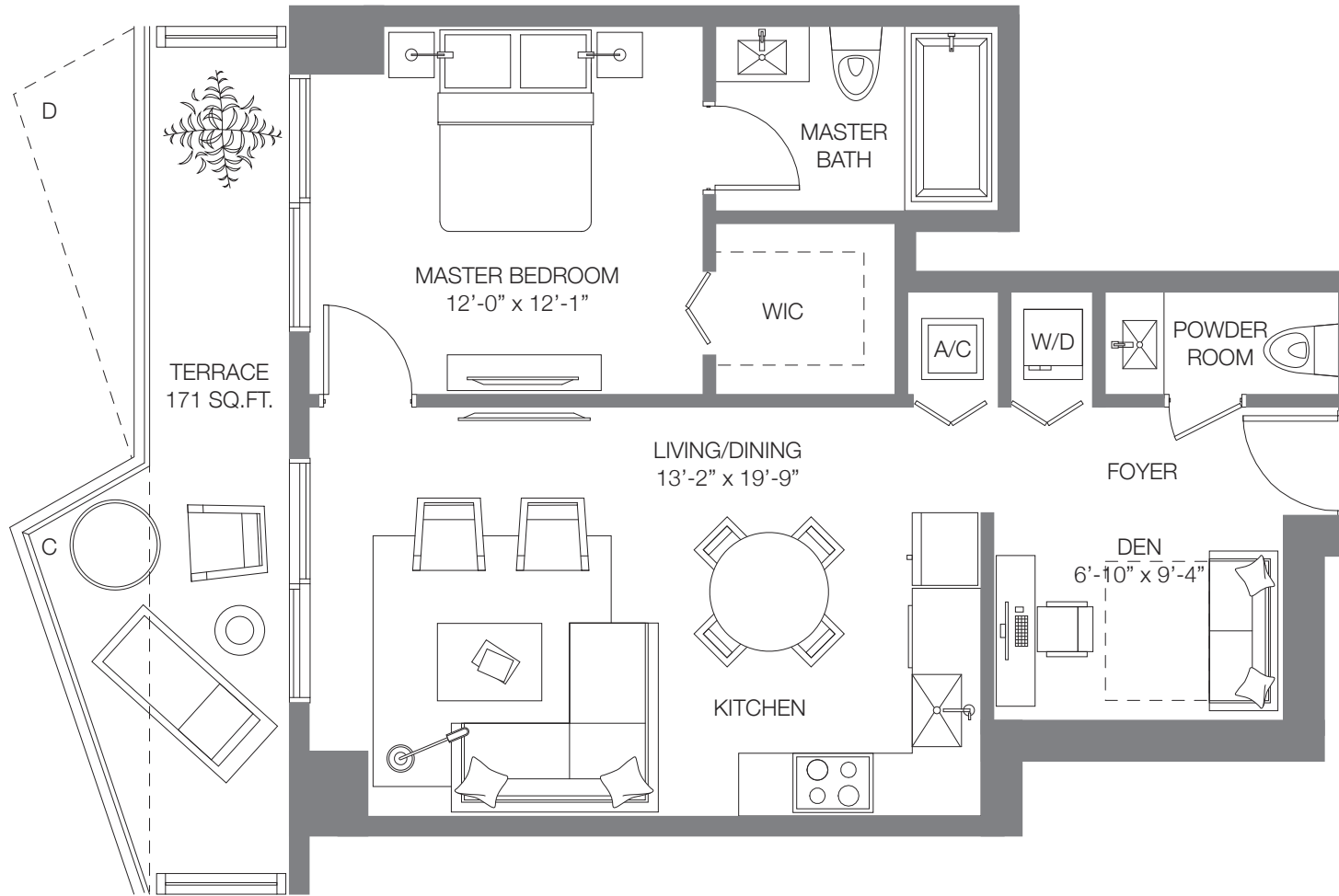
SLS RESIDENCE 07

1 BEDROOM / 1 BATH

A/C INTERIOR AREA	692 SQ. FT.	64.28 SQ. M.
TERRACE W/EXTENSION AREA	168 SQ. FT.	15.60 SQ. M.
TOTAL RESIDENCE	860 SQ. FT.	79.88 SQ. M.

Stated dimensions are measured to the exterior boundaries of the exterior walls and the centerline of interior demising walls and in fact vary from the dimensions that would be determined by using the description and definition of the "Unit" set forth in the Declaration (which generally only includes the interior airspace between the perimeter walls and excludes interior structural components). For your reference, the area of the Unit, determined in accordance with those defined unit boundaries, is + or - 544 sq. ft. for units 07. Note that measurements of rooms set forth on this floor plan are generally taken at the greatest points of each given room (as if the room were a perfect rectangle), without regard for any cutouts. Accordingly, the area of the actual room will typically be smaller than the product obtained by multiplying the stated length times width. All dimensions are approximate and may vary with actual construction, and all floor plans and development plans are subject to change.





TERRACE EXTENSION 27 SQ. FT.
 C. FLOORS 12, 18, 23, 28, 33, 38, 43, 48
 D. FLOORS 11, 17, 22, 27, 32, 37, 42, 47

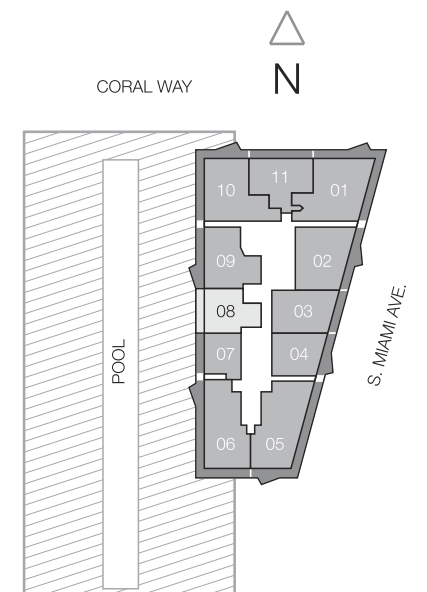
Floors not listed above do not have an extended terrace.
 Terrace without extension is 144 SQ. FT.

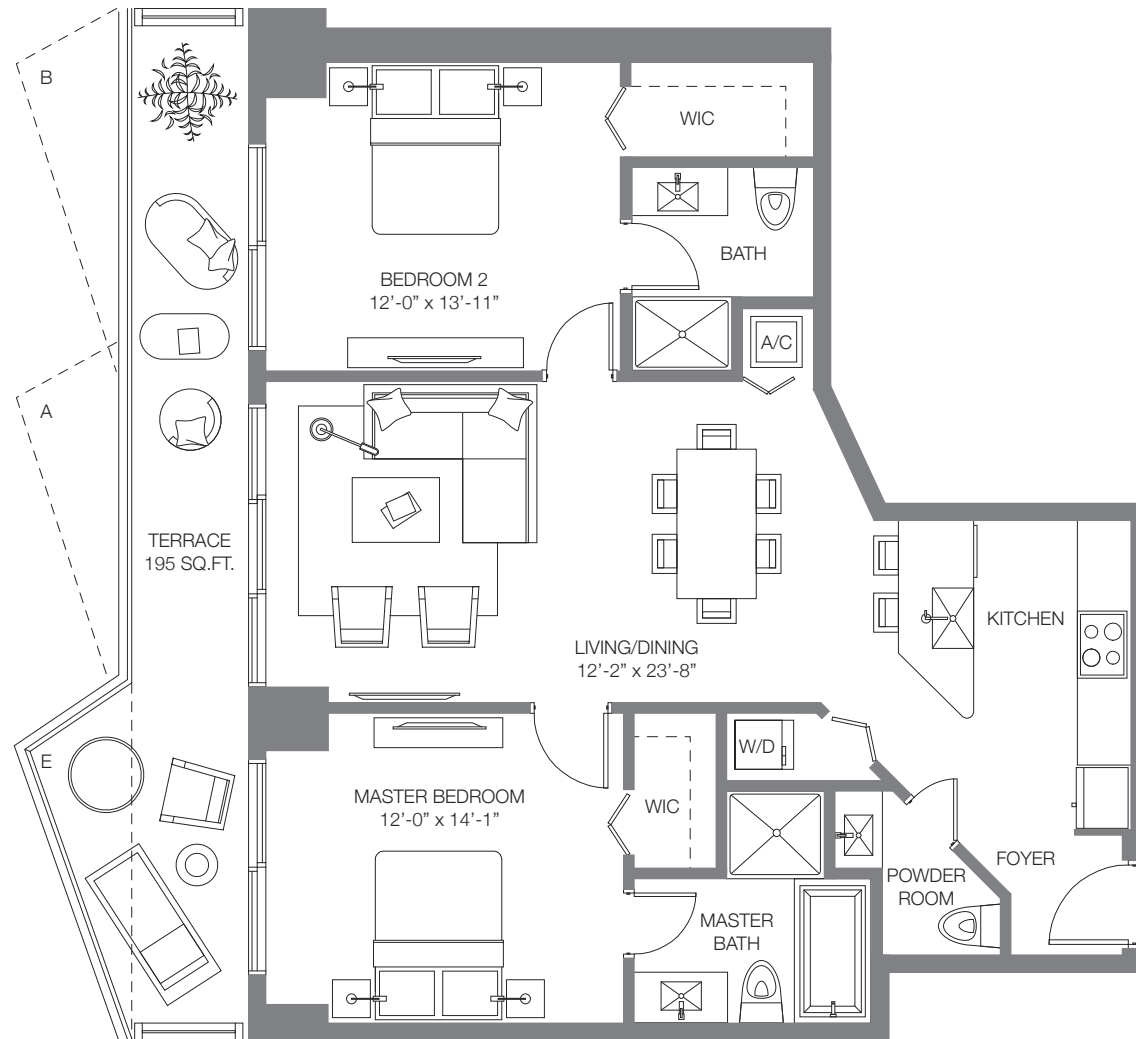
SLS RESIDENCE 08

1 BEDROOM & DEN / 1 ½ BATHS

A/C INTERIOR AREA	762 SQ. FT.	70.79 SQ. M.
TERRACE W/EXTENSION AREA	171 SQ. FT.	15.88 SQ. M.
TOTAL RESIDENCE	933 SQ. FT.	86.67 SQ. M.

Stated dimensions are measured to the exterior boundaries of the exterior walls and the centerline of interior demising walls and in fact vary from the dimensions that would be determined by using the description and definition of the "Unit" set forth in the Declaration (which generally only includes the interior airspace between the perimeter walls and excludes interior structural components). For your reference, the area of the Unit, determined in accordance with those defined unit boundaries, is + or - 668 sq. ft. for units 08. Note that measurements of rooms set forth on this floor plan are generally taken at the greatest points of each given room (as if the room were a perfect rectangle), without regard for any cutouts. Accordingly, the area of the actual room will typically be smaller than the product obtained by multiplying the stated length times width. All dimensions are approximate and may vary with actual construction, and all floor plans and development plans are subject to change.





TERRACE EXTENSION 27 SQ. FT.
 A. FLOORS 15, 20, 25, 30, 35, 40, 45, 50
 B. FLOORS 14, 19, 24, 29, 34, 39, 44, 49
 E. FLOORS 10, 16, 21, 26, 31, 36, 41, 46

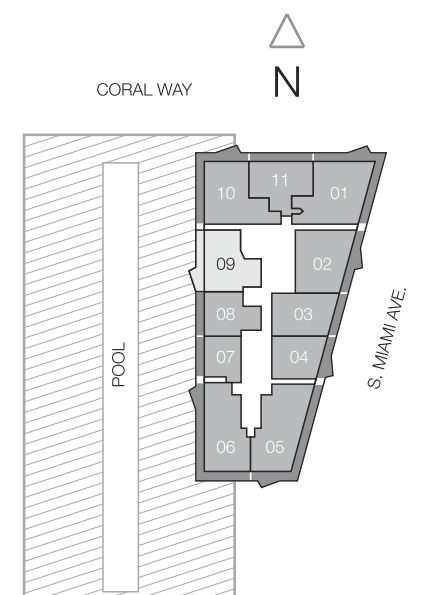
Floors not listed above do not have an extended terrace.
 Terrace without extension is 168 SQ. FT.

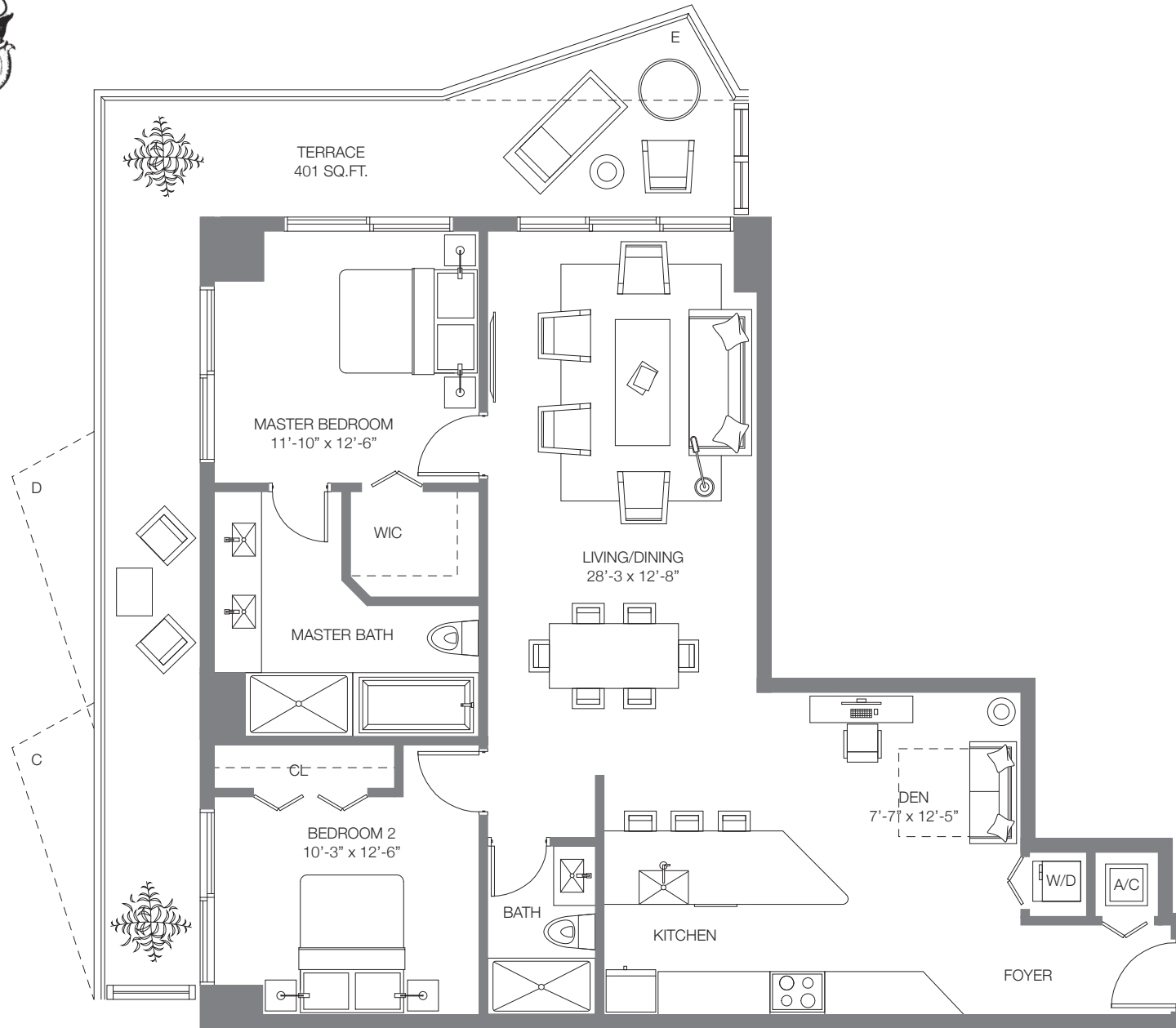
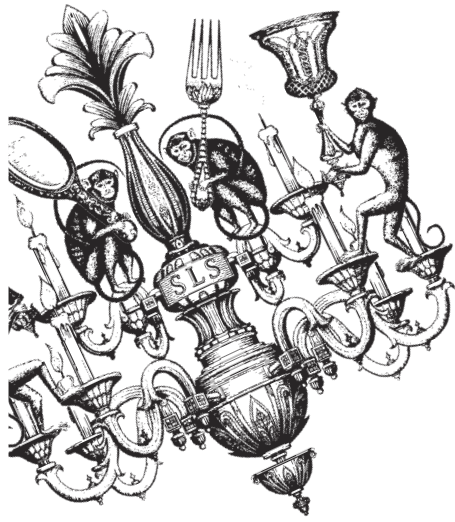
SLS RESIDENCE 09

2 BEDROOMS / 2 ½ BATHS

A/C INTERIOR AREA	1,115 SQ. FT.	103.59 SQ. M.
TERRACE W/EXTENSION AREA	195 SQ. FT.	18.11 SQ. M.
TOTAL RESIDENCE	1,310 SQ. FT.	121,70 SQ. M.

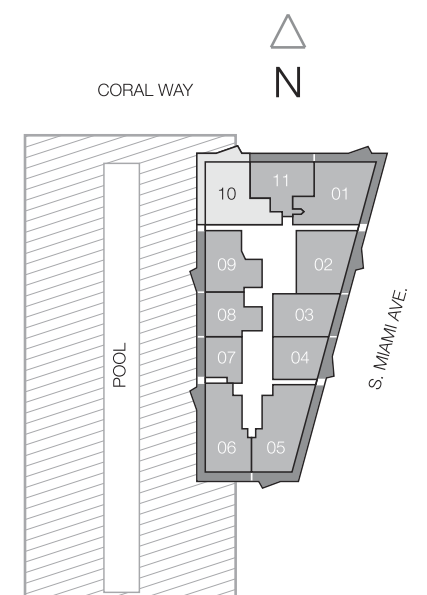
Stated dimensions are measured to the exterior boundaries of the exterior walls and the centerline of interior demising walls and in fact vary from the dimensions that would be determined by using the description and definition of the "Unit" set forth in the Declaration (which generally only includes the interior airspace between the perimeter walls and excludes interior structural components). For your reference, the area of the Unit, determined in accordance with those defined unit boundaries, is + or - 966 sq. ft. for units 09. Note that measurements of rooms set forth on this floor plan are generally taken at the greatest points of each given room (as if the room were a perfect rectangle), without regard for any cutouts. Accordingly, the area of the actual room will typically be smaller than the product obtained by multiplying the stated length times width. All dimensions are approximate and may vary with actual construction, and all floor plans and development plans are subject to change.





TERRACE EXTENSION 27 SQ. FT.
 C. FLOORS 12, 18, 23, 28, 33, 38, 43, 48
 D. FLOORS 11, 17, 22, 27, 32, 37, 42, 47
 E. FLOORS 10, 16, 21, 26, 31, 36, 41, 46

Floors not listed above do not have an extended terrace.
 Terrace without extension is 374 SQ. FT.

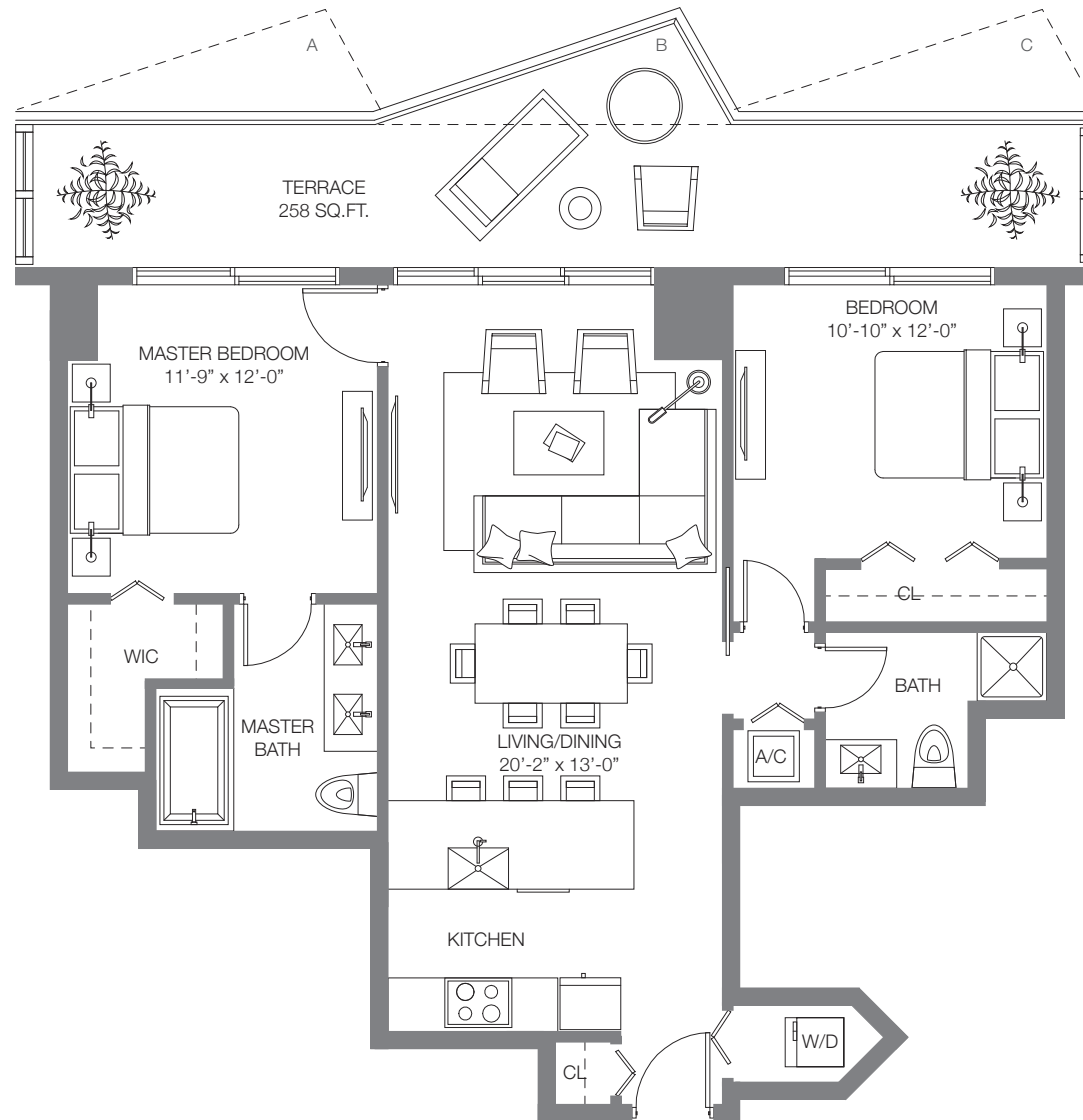
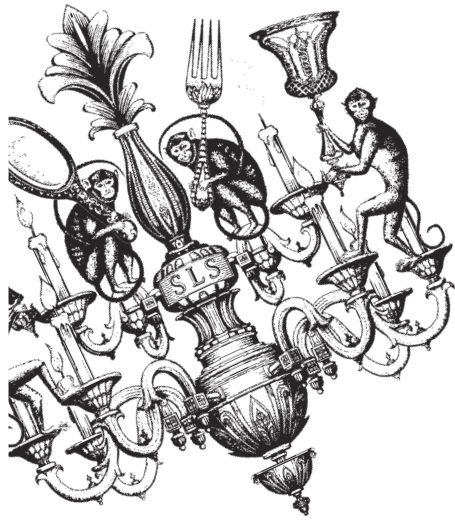


SLS RESIDENCE 10

2 BEDROOMS & DEN / 2 BATHS

A/C INTERIOR AREA	1,334 SQ. FT.	123.93 SQ. M.
TERRACE W/EXTENSION AREA	401 SQ. FT.	37.25 SQ. M.
TOTAL RESIDENCE	1,735 SQ. FT.	161.18 SQ. M.

Stated dimensions are measured to the exterior boundaries of the exterior walls and the centerline of interior demising walls and in fact vary from the dimensions that would be determined by using the description and definition of the "Unit" set forth in the Declaration (which generally only includes the interior airspace between the perimeter walls and excludes interior structural components). For your reference, the area of the Unit, determined in accordance with those defined unit boundaries, is + or - 1,156 sq. ft. for units 10. Note that measurements of rooms set forth on this floor plan are generally taken at the greatest points of each given room (as if the room were a perfect rectangle), without regard for any cutouts. Accordingly, the area of the actual room will typically be smaller than the product obtained by multiplying the stated length times width. All dimensions are approximate and may vary with actual construction, and all floor plans and development plans are subject to change.



TERRACE EXTENSION 27 SQ. FT.
 A. FLOORS 15, 20, 25, 30, 35, 40, 45, 50
 B. FLOORS 14, 19, 24, 29, 34, 39, 44, 49
 C. FLOORS 12, 18, 23, 28, 33, 38, 43, 48

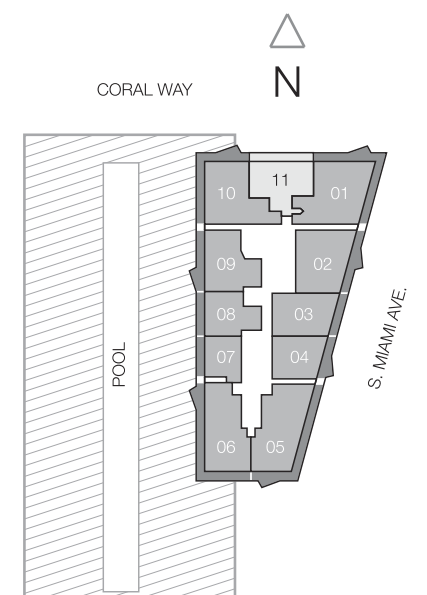
Floors not listed above do not have an extended terrace.
 Terrace without extension is 231 SQ. FT.

SLS RESIDENCE 11

2 BEDROOMS / 2 BATHS

A/C INTERIOR AREA	962 SQ. FT.	89.37 SQ. M.
TERRACE W/EXTENSION AREA	258 SQ. FT.	23.96 SQ. M.
TOTAL RESIDENCE	1,220 SQ. FT.	113.33 SQ. M.

Stated dimensions are measured to the exterior boundaries of the exterior walls and the centerline of interior demising walls and in fact vary from the dimensions that would be determined by using the description and definition of the "Unit" set forth in the Declaration (which generally only includes the interior airspace between the perimeter walls and excludes interior structural components). For your reference, the area of the Unit, determined in accordance with those defined unit boundaries, is + or - 872 sq. ft. for units 11. Note that measurements of rooms set forth on this floor plan are generally taken at the greatest points of each given room (as if the room were a perfect rectangle), without regard for any cutouts. Accordingly, the area of the actual room will typically be smaller than the product obtained by multiplying the stated length times width. All dimensions are approximate and may vary with actual construction, and all floor plans and development plans are subject to change.



ON-SITE SALES GALLERY 1300 SOUTH MIAMI AVENUE, MIAMI, FL 33130
TEL 305.533.1350
TOLL FREE: 855.SLS.1300
WWW.SLSBRICKELL.COM

Sales by **Related Realty** in collaboration with **Fortune Development Sales**



This is not intended to be an offer to sell, or solicitation to buy, condominium units to residents of CT, ID, NJ, NY and OR, unless registered or exemptions are available, or in any other jurisdiction where prohibited by law, and your eligibility for purchase will depend upon your state of residency. This offering is made only by the prospectus for the condominium and no statement should be relied upon if not made in the prospectus. The sketches, renderings, graphic materials, plans, specifications, terms, conditions and statements contained in this brochure are proposed only, and the Developer reserves the right to modify, revise or withdraw any or all of same in its sole discretion and without prior notice. All improvements, designs and construction are subject to first obtaining the appropriate federal, state and local permits and approvals for same. These drawings and depictions are conceptual only and are for the convenience of reference. They should not be relied upon as representations, express or implied, of the final detail of the residences. The developer expressly reserves the right to make modifications, revisions, and changes it deems desirable in its sole and absolute discretion. All depictions of furniture, appliances, counters, soffits, floor coverings and other matters of detail, including, without limitation, items of finish and decoration, are conceptual only and are not necessarily included in each Unit. The photographs contained in this brochure may be stock photography or have been taken off-site and are used to depict the spirit of the lifestyles to be achieved rather than any that may exist or that may be proposed, and are merely intended as illustrations of the activities and concepts depicted therein. Consult your Agreement and the Prospectus for the items included with the Unit. Dimensions and square footage are approximate and may vary with actual construction. Restaurants, clubs and other business establishments and/or any operators of same referenced herein are subject to change at any time, and no representations regarding restaurants, clubs, businesses and/or operators within the project may be relied upon. Restaurants, clubs and/or other business establishments are anticipated to be operated from the commercial components of the project which will be offered for sale to third parties. Determination regarding use of the commercial spaces will be in the discretion of the purchasers of those spaces and there is no assurance that they will be used for the purposes, and/or with the operators, named herein. Any and all references to, and/or renderings of, Brickell CityCentre, Museum Park and/or Resorts World Miami and other proposed projects depicted are proposed only, are not constructed, and are not being developed by the Developer of SLS Hotel & Residences Brickell Condominium. As such, the Developer has no control over those projects and there is no guarantee that they will be developed, or if so, when and what they will consist of. The information provided herein regarding Brickell CityCentre, Museum Park, Resorts World Miami or other proposed projects depicted was obtained from newspaper articles and other public information and Developer makes no representations as to same. Attractions and areas referenced and/or identified in the "Find the Energy & Spirit of Miami in Brickell" section of this publication are off-site and not controlled by the Developer. They are accurate as of the date of this publication, however there is no guarantee that they will continue to exist or that there won't be changes and/or substitutions of same. The Related Group is not the project developer. This Condominium is being developed by PRH 1300 S Miami Avenue, LLC ("Developer"), which has a limited right to use the trademarked names and logos of The Related Group pursuant to a license and marketing agreement with The Related Group. Any and all statements, disclosures and/or representations shall be deemed made by Developer and not by The Related Group and you agree to look solely to Developer (and not to The Related Group and/or any of its affiliates) with respect to any and all matters relating to the marketing and/or development of the Condominium and with respect to the sales of units in the Condominium. The project graphics, renderings and text provided herein are copyrighted works owned by the developer. © 2012, PRH 1300 S Miami Avenue, LLC. All rights reserved. Unauthorized reproduction, display or other dissemination of such materials is strictly prohibited and constitutes copyright infringement. No real estate broker is authorized to make any representations or other statements regarding the projects, and no agreements with, deposits paid to or other arrangements made with any real estate broker are or shall be binding on the developer. All prices are subject to change at any time and without notice, and do not include optional features or premiums for upgraded units. From time to time, price changes may have occurred that are not yet reflected on this brochure. Please check with the sales center for the most current pricing.