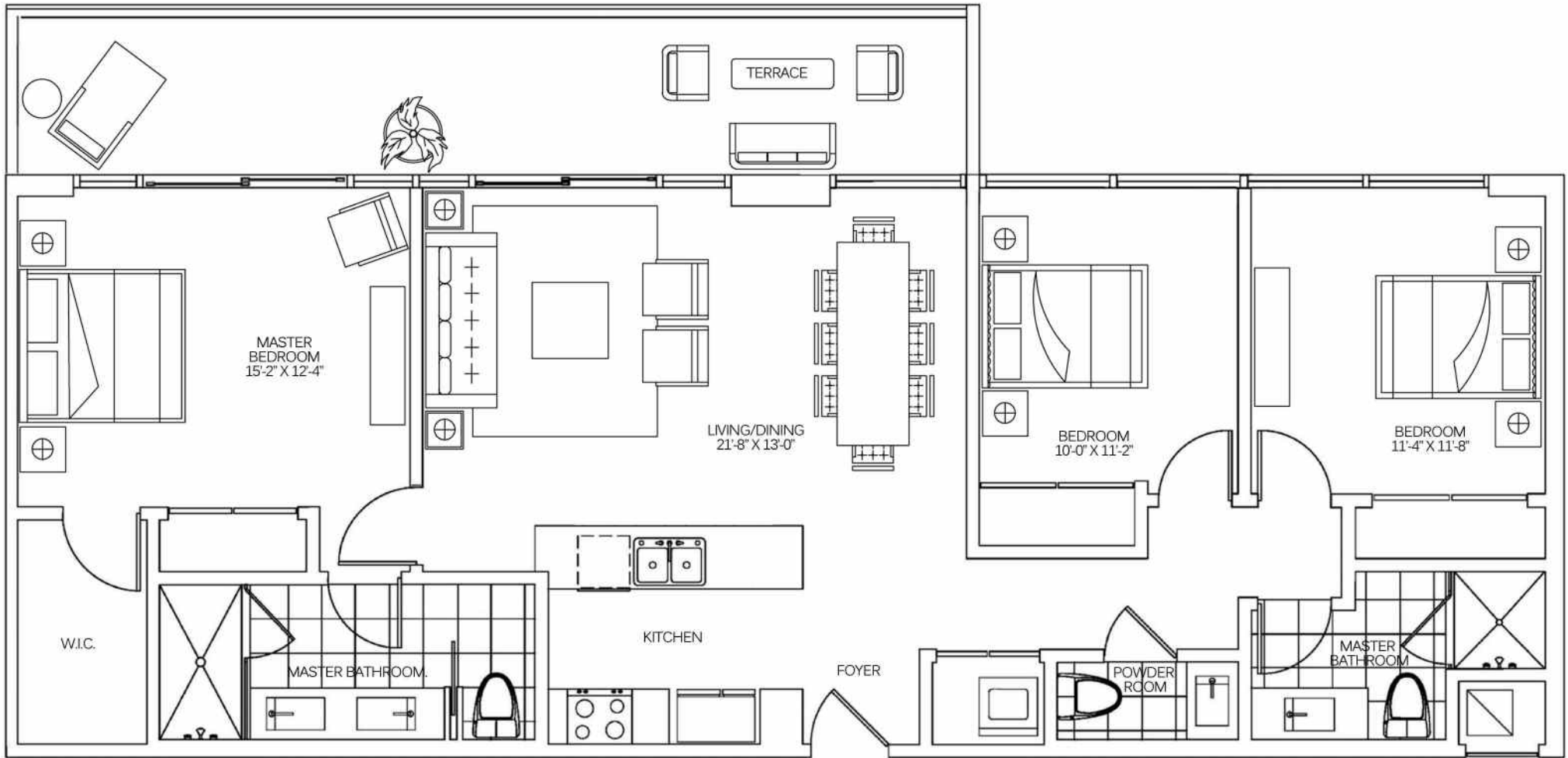


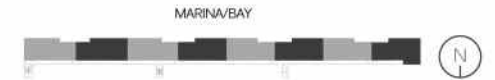
400 SUNNY ISLES

FLOOR PLANS

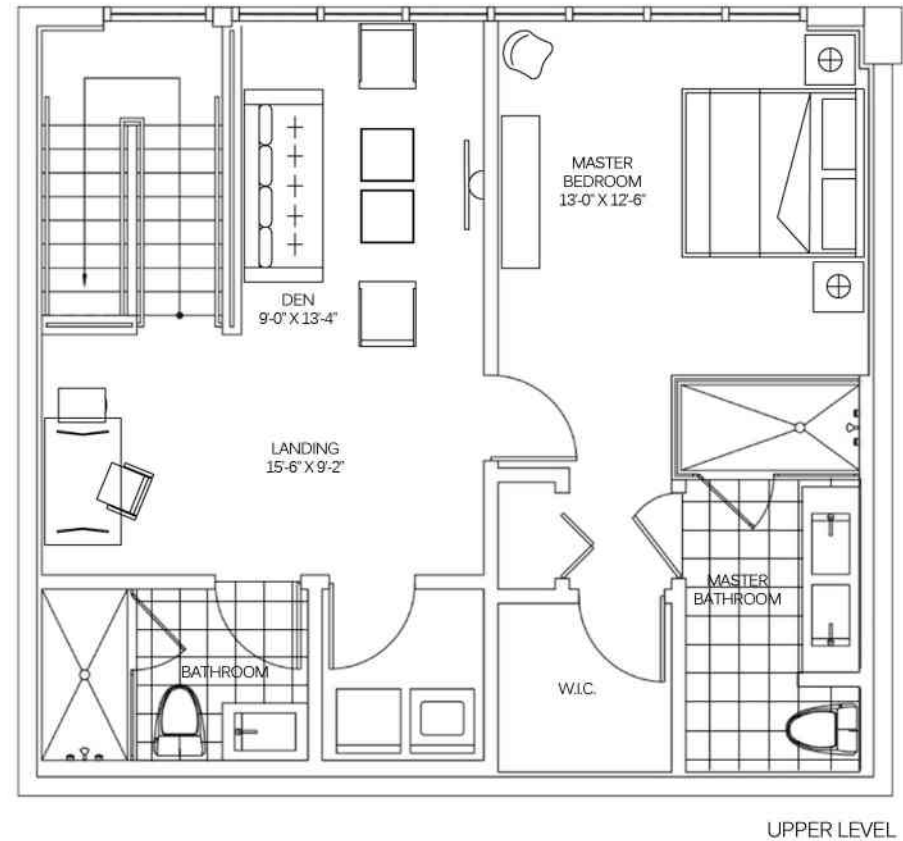
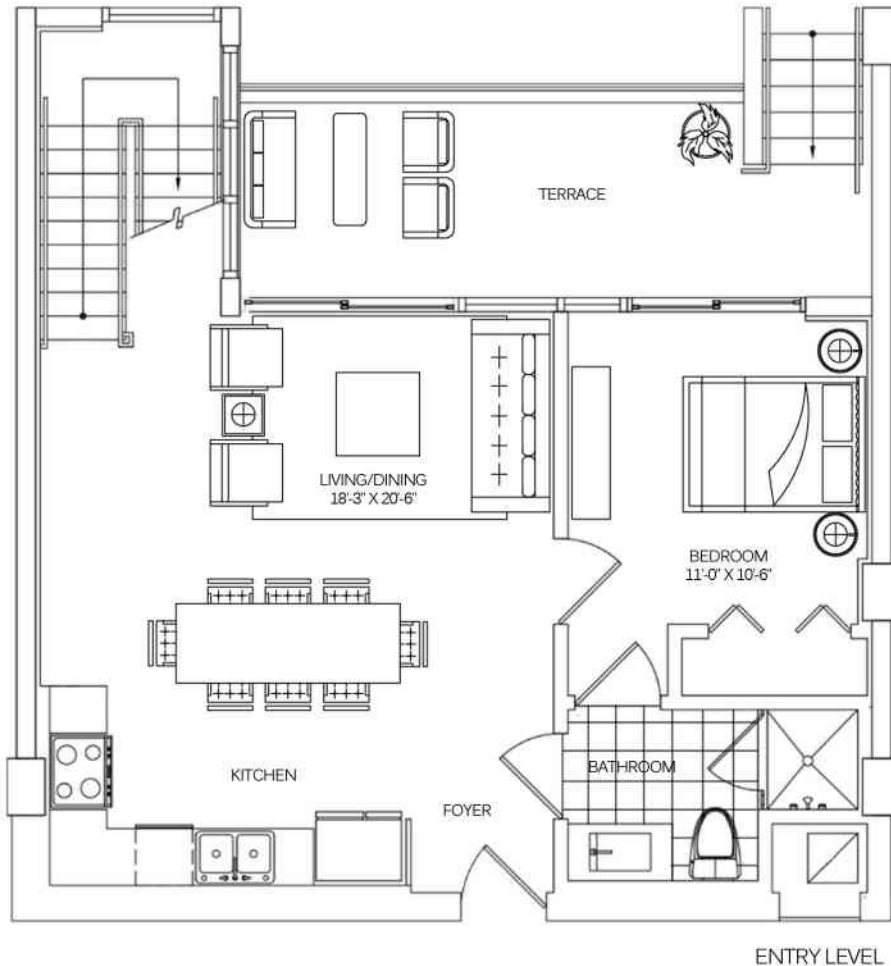


**400
SUNNY
ISLES**
KEY INTERNATIONAL

FLAT
3 BEDROOMS / 2.5 BATHS
1,350 SF UNDER A/C + 192 SF TERRACE = 1,542 SF TOTAL
125.4 m² UNDER A/C + 17.8 m² TERRACE = 143.3 m² TOTAL



All fixtures, furniture, items of finish, and decorations are for display purposes only and will not be included with the unit. Consult the prospectus for a description of the features which are to be included in the unit. Prices, features, and specifications are subject to change without notice. Oral representations cannot be relied upon as correctly stating the representations of the developer. For correct representations by the developer, make reference to documents required by Section 718.503 of the Florida Statutes, to be furnished by the developer to a buyer or lessee. The developer makes no representations or warranties regarding the actual size and dimensions of the units contained in this brochure, and no party may rely upon the same in determining whether to purchase a unit and the purchase price of the unit. The survey of the units and the provisions of the declaration of condominium shall control in determining the boundaries and actual dimensions of the units. Unit's square footage is measured using BOMA guidelines as described in the condominium documents. Pocket door will not be furnished by developer. Drawing is not to scale.

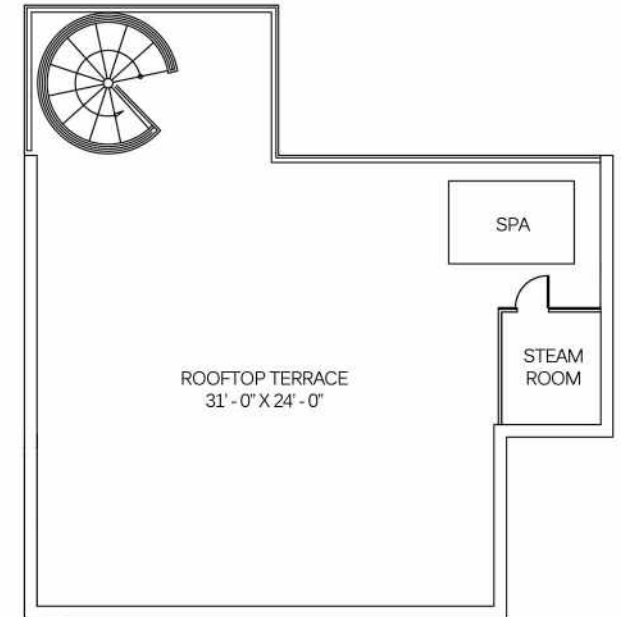
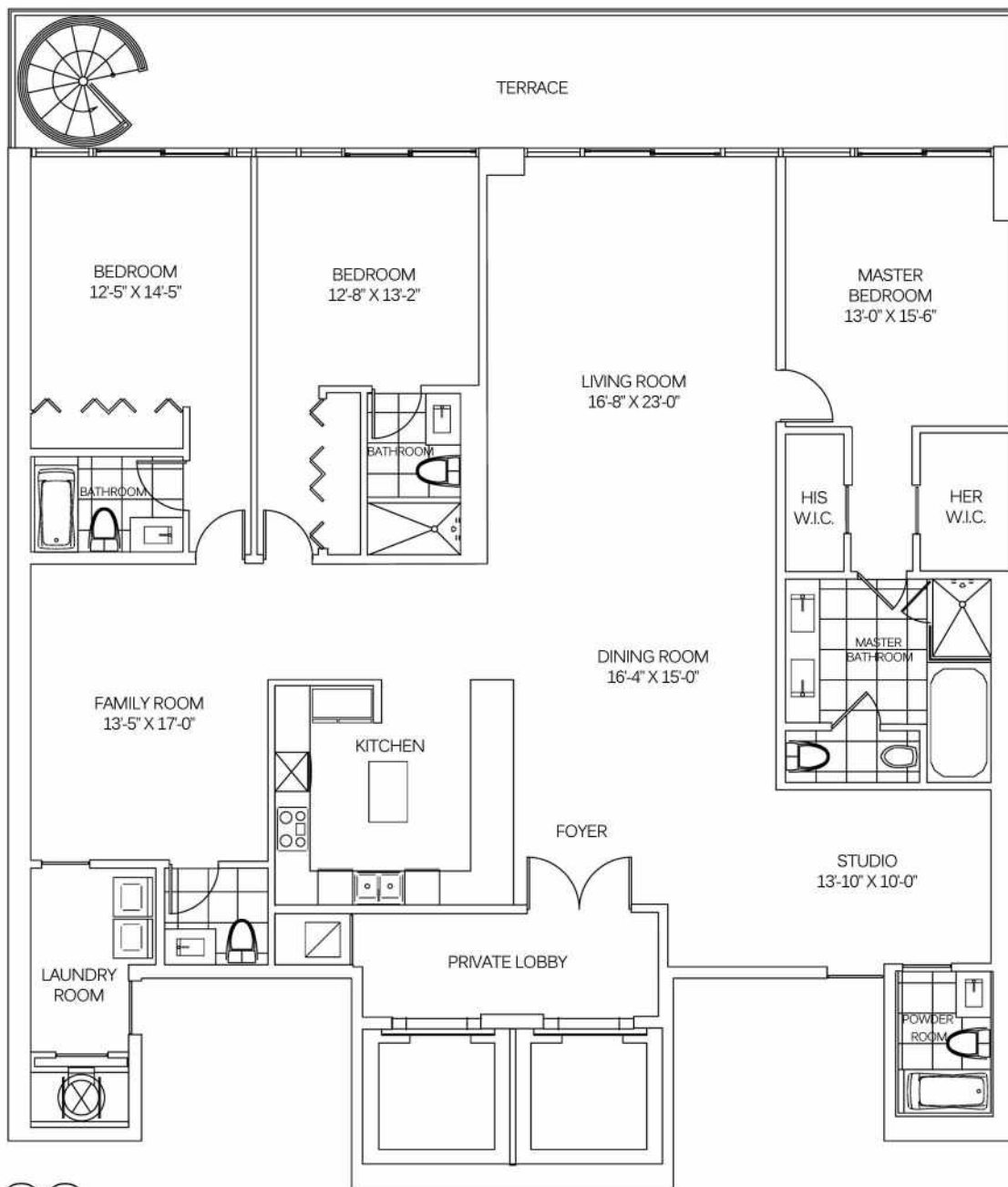


400
SUNNY
ISLES

KEY INTERNATIONAL

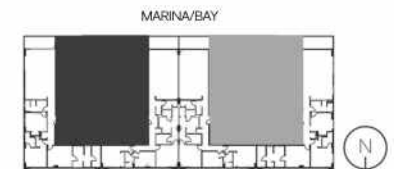
LOFT
2 BEDROOMS / DEN / 3 BATHS
(3 BEDROOM CONVERTIBLE)
1,503 SF UNDER A/C + 139 SF TERRACE = 1,642 SF TOTAL
139.6 m² UNDER A/C + 12.9 m² TERRACE = 152.5 m² TOTAL



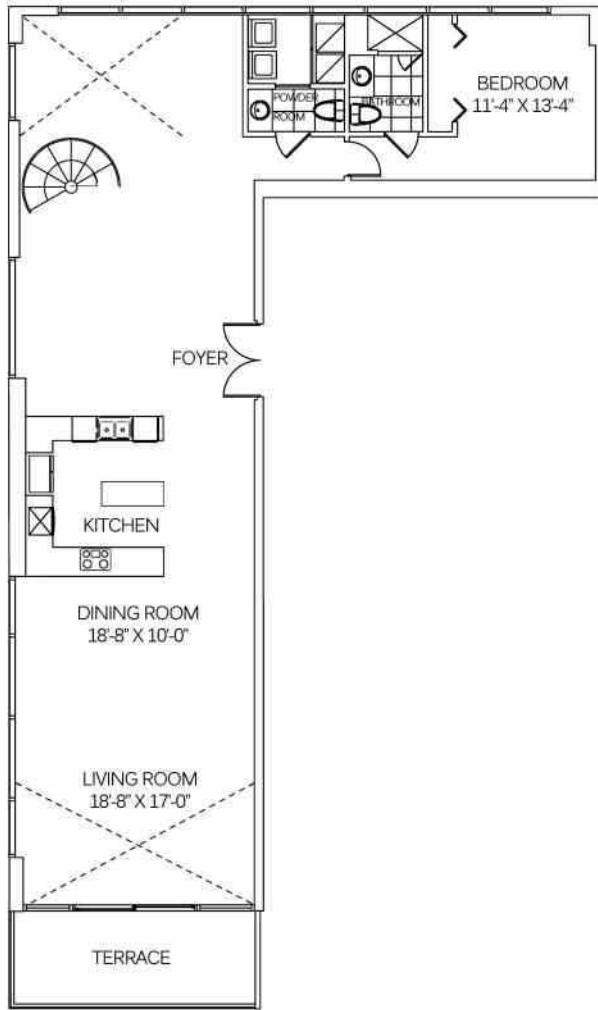


400
SUNNY
ISLES

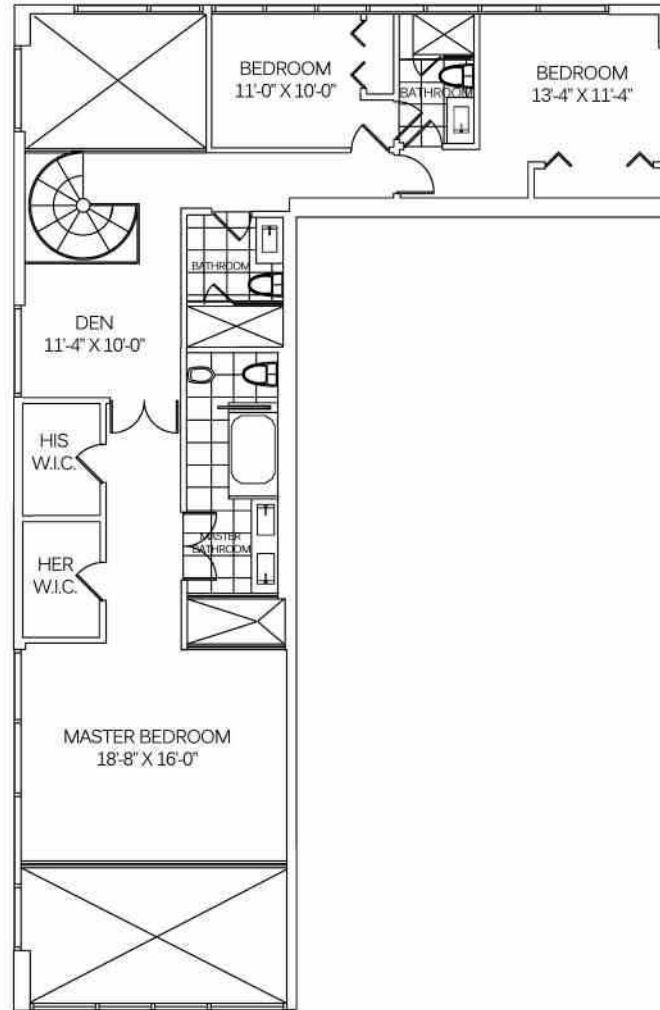
KEY INTERNATIONAL



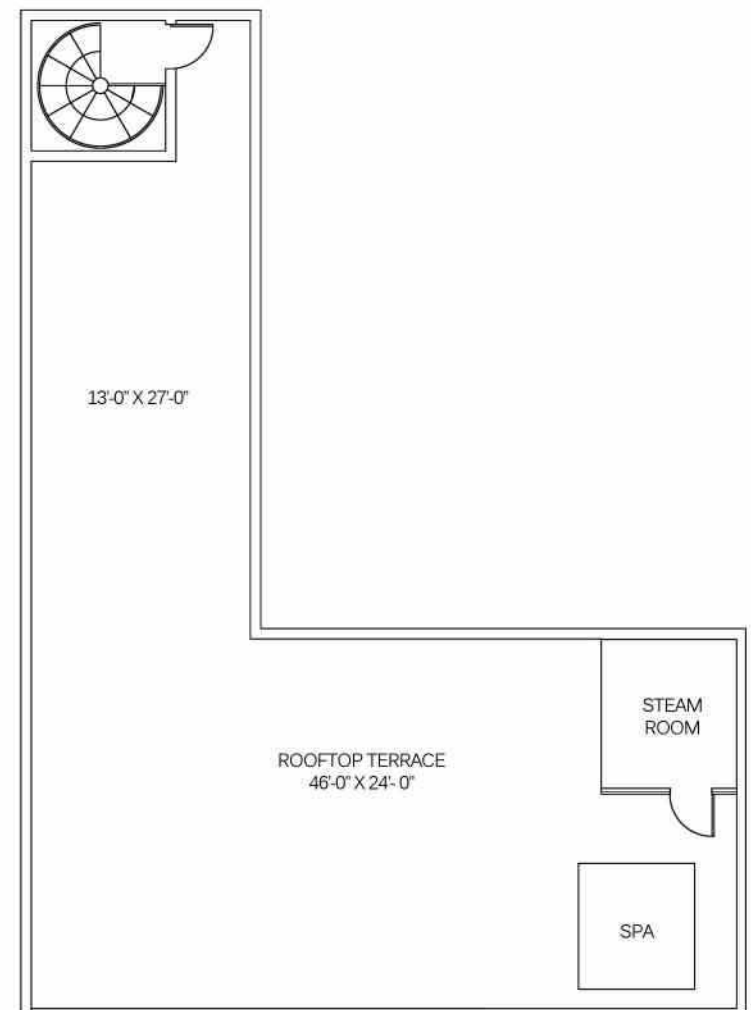
PENTHOUSE
3 BEDROOMS / 4.5 BATHS / STUDIO / FAMILY
2,585 SF UNDER A/C + 1,208 SF TERRACE = 3,793 SF TOTAL
240.2 m² UNDER A/C + 112.2 m² TERRACE = 352.4 m² TOTAL



ENTRY LEVEL



UPPER LEVEL



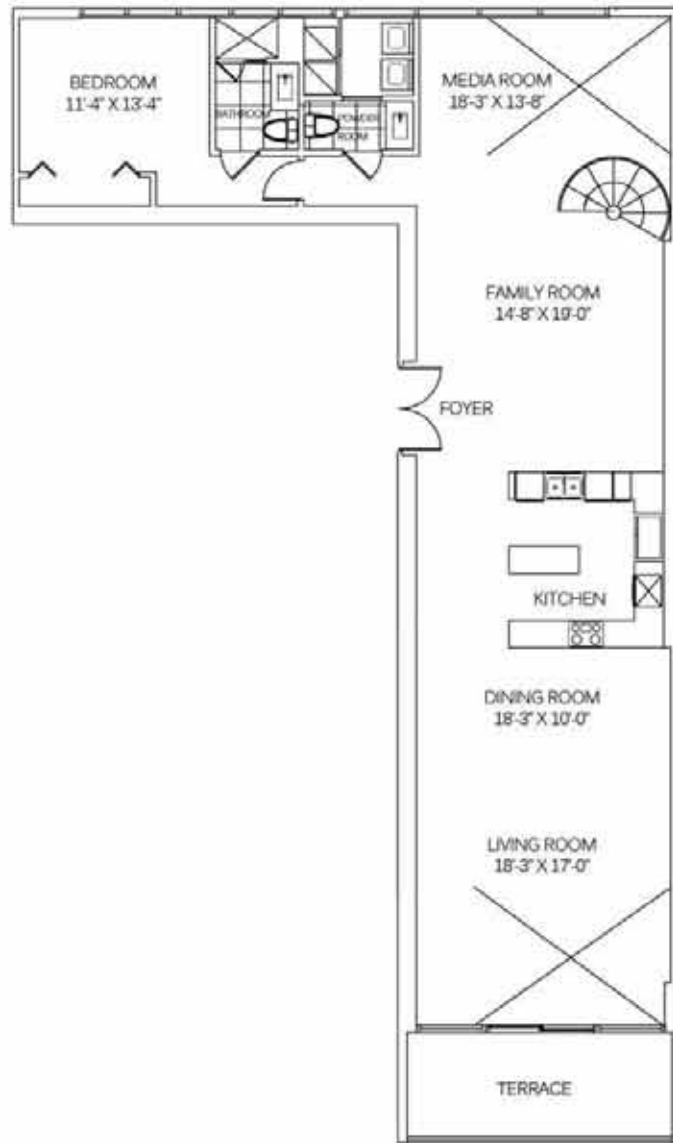
ROOFTOP TERRACE

400
SUNNY
ISLES

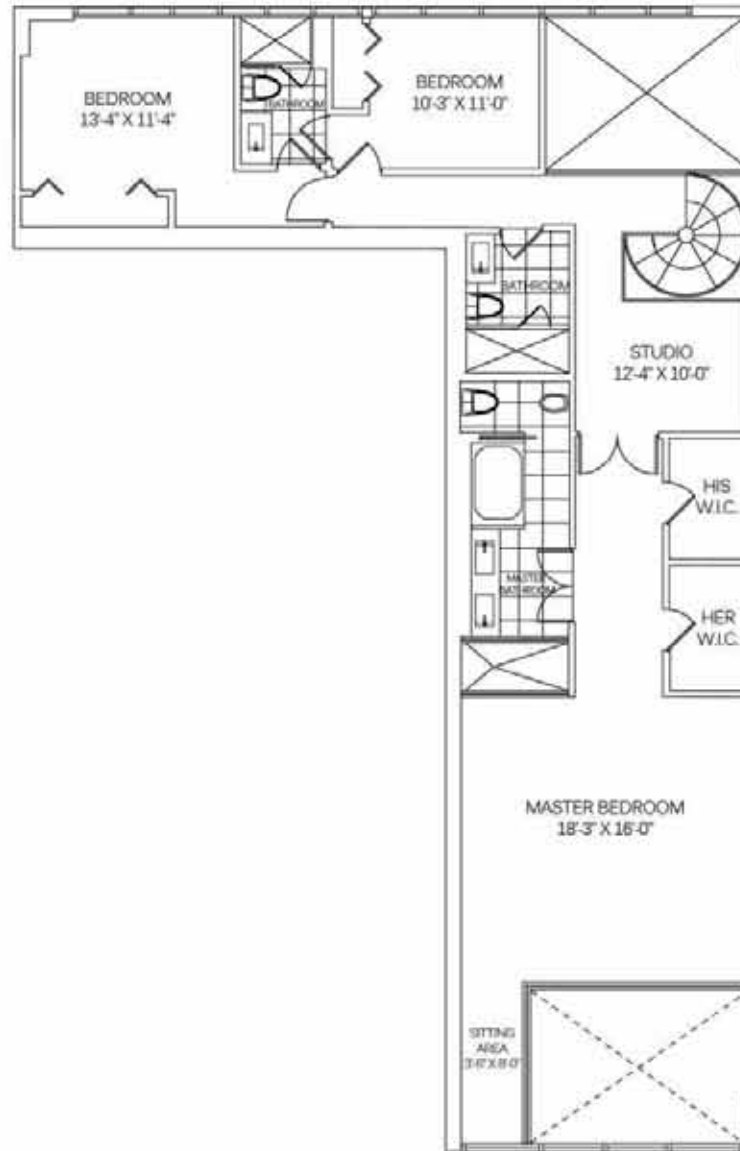
KEY INTERNATIONAL



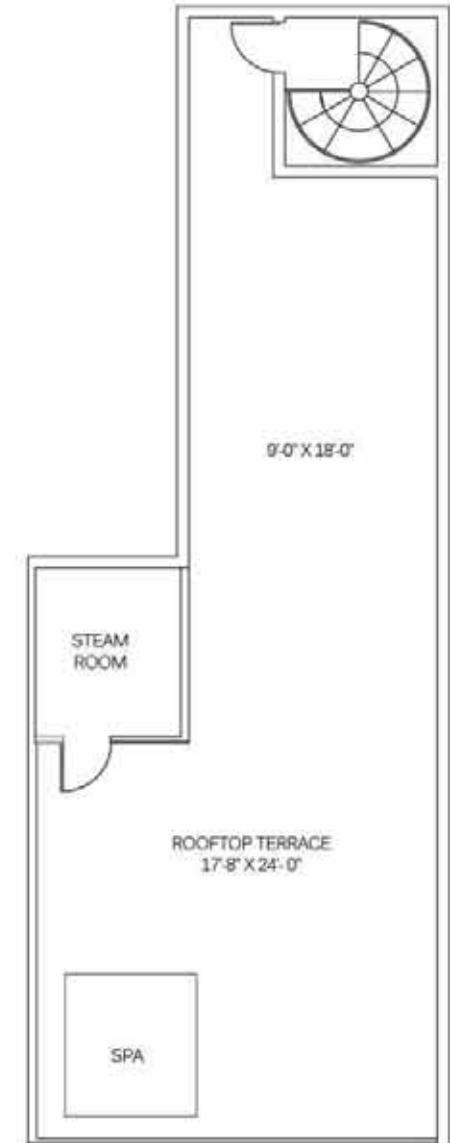
SKYLOFT A
4 BEDROOMS / DEN / 4.5 BATHS
3,395 SF UNDER A/C + 1,610 SF TERRACE = 5,005 SF TOTAL
315.4 m² UNDER A/C + 149.6 m² TERRACE = 465.0 m² TOTAL



ENTRY LEVEL



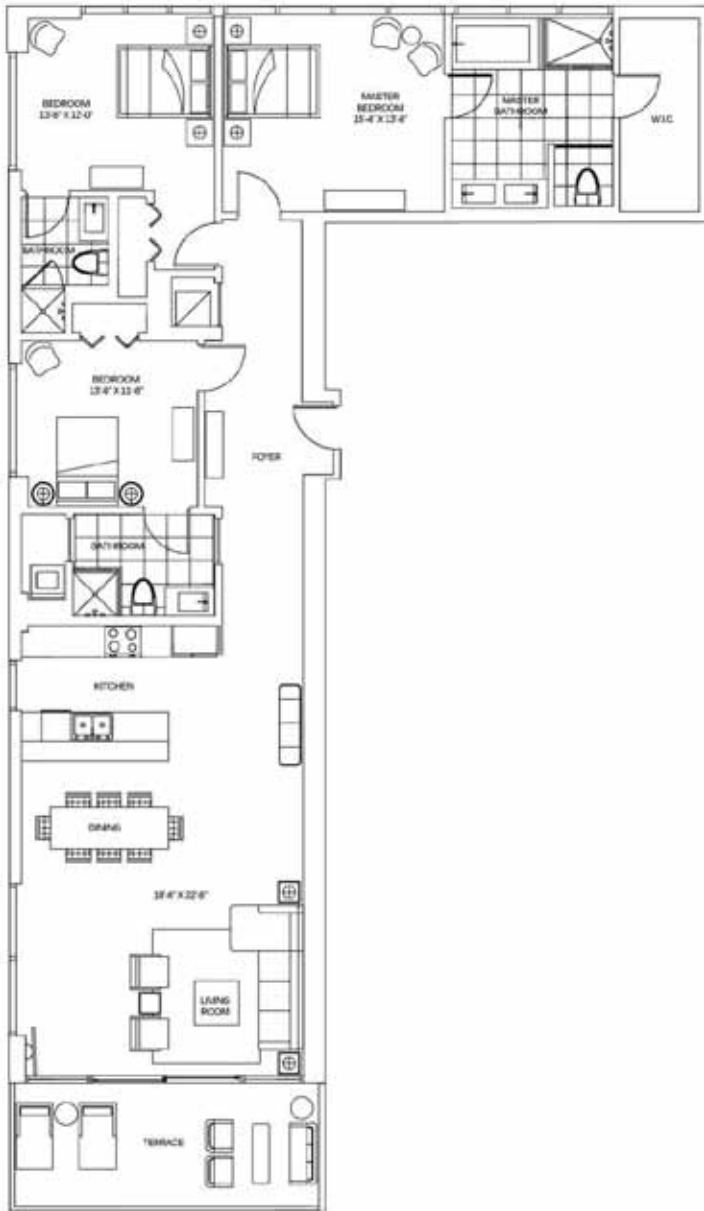
UPPER LEVEL



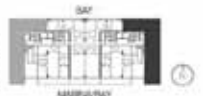
ROOFTOP TERRACE



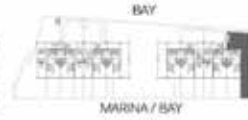
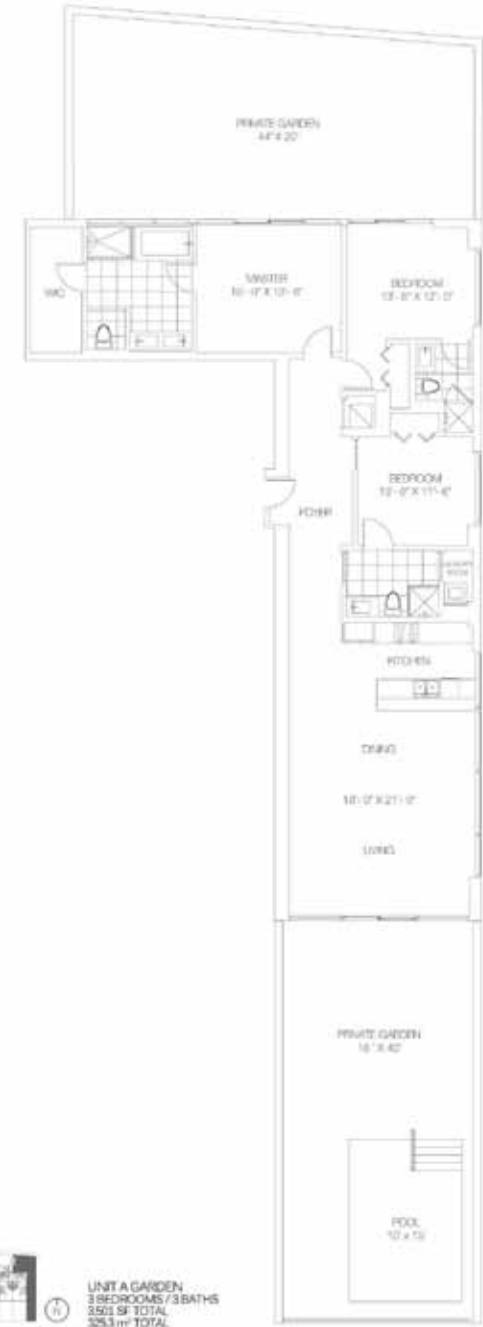
SKYLOFT B
 4 BEDROOMS / 4.5 BATHS / STUDIO / FAMILY / MEDIA
 3,299 SF UNDER A/C + 735 SF TERRACE = 4,034 SF TOTAL
 306.5 m² UNDER A/C + 68.3 m² TERRACE = 374.8 m² TOTAL



UNIT A
 3 BEDROOMS / 3 BATHS
 1872 SF UNDER A/C + 180 SF TERRACE = 2052 SF TOTAL
 173.9 m² UNDER A/C + 14.9 m² TERRACE = 188.8 m² TOTAL

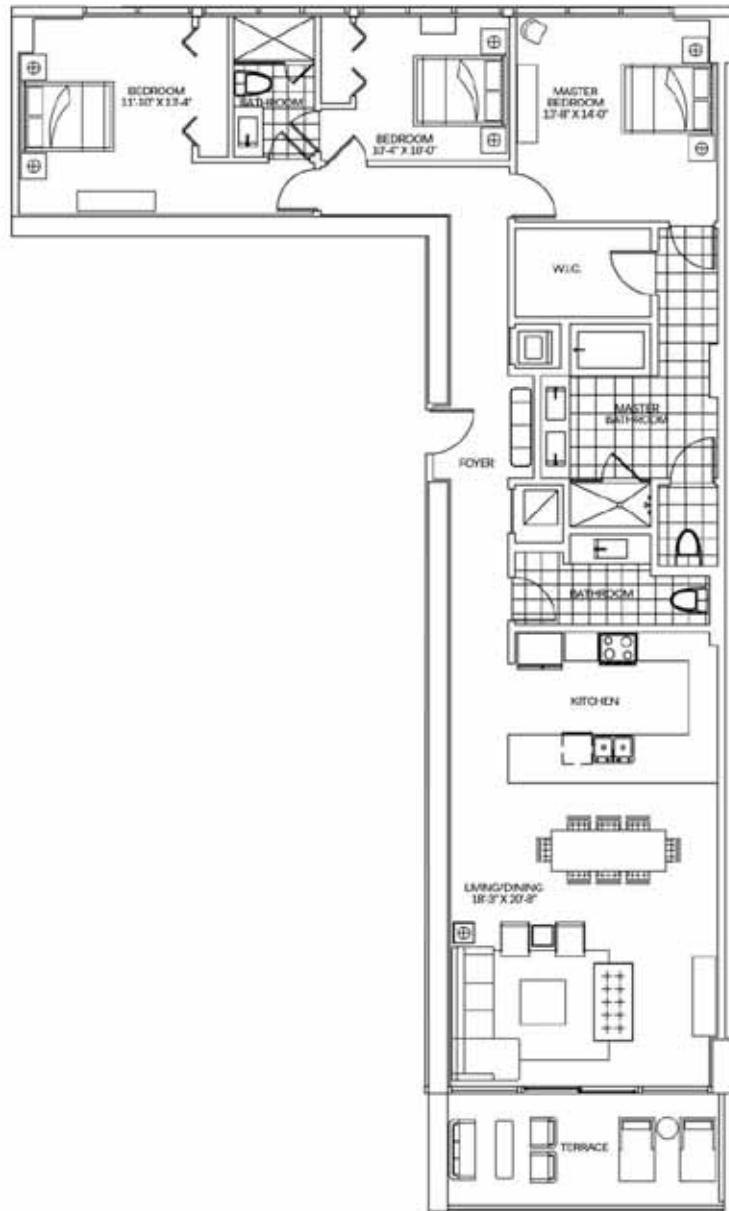


All features, finishes, items of fixt., and decorations are for display purposes only and will not be included with the unit. Consult the prospectus for a description of the features which are to be included in the unit. Prices, features, and specifications are subject to change without notice. Oral representations shall not be relied upon as correctly stating the representations of the developer. For correct representations by the developer, make reference to documents required by Section 710.003 of the Florida Statutes, to be furnished by the developer to a buyer of a home. The developer makes no representation or warranties regarding the actual size and dimensions of the units contained in this brochure and no party may rely upon the same in determining whether to purchase a unit and the purchase price of the unit. The survey of the units and the declaration of condominium shall control in determining the boundaries and actual dimensions of the units. Unit square footage is measured using BOMA guidelines as described in the condominium documents. Pocket door will not be furnished by developer. Drawing is not to scale.



UNIT A GARDEN
 3 BEDROOMS / 3 BATHS
 3502 SF TOTAL
 325.3 m² TOTAL

Prices, features, and specifications subject to change without notice. Oral representations cannot be relied upon as correctly stating representations of the developer. For correct representations by the developer, make reference to documents required by sections 710.003 Florida Statutes, to be furnished by developer to a buyer of a home. The developer makes no representation or warranties regarding the actual size and dimensions of the units contained in this brochure, and no party may rely upon the same in determining whether to purchase a unit and the purchase price of the unit. The survey of the units and provisions of the declaration of condominium shall control in determining the boundaries and actual dimensions of the units. Pocket door will not be furnished by developer. Drawing not to scale.



UNIT B
 3 BEDROOMS / 2.5 BATHS
 1,838 SF UNDER A/C + 156 SF TERRACE = 1,993 SF TOTAL
 1708 m² UNDER A/C + 144 m² TERRACE = 1852 m² TOTAL



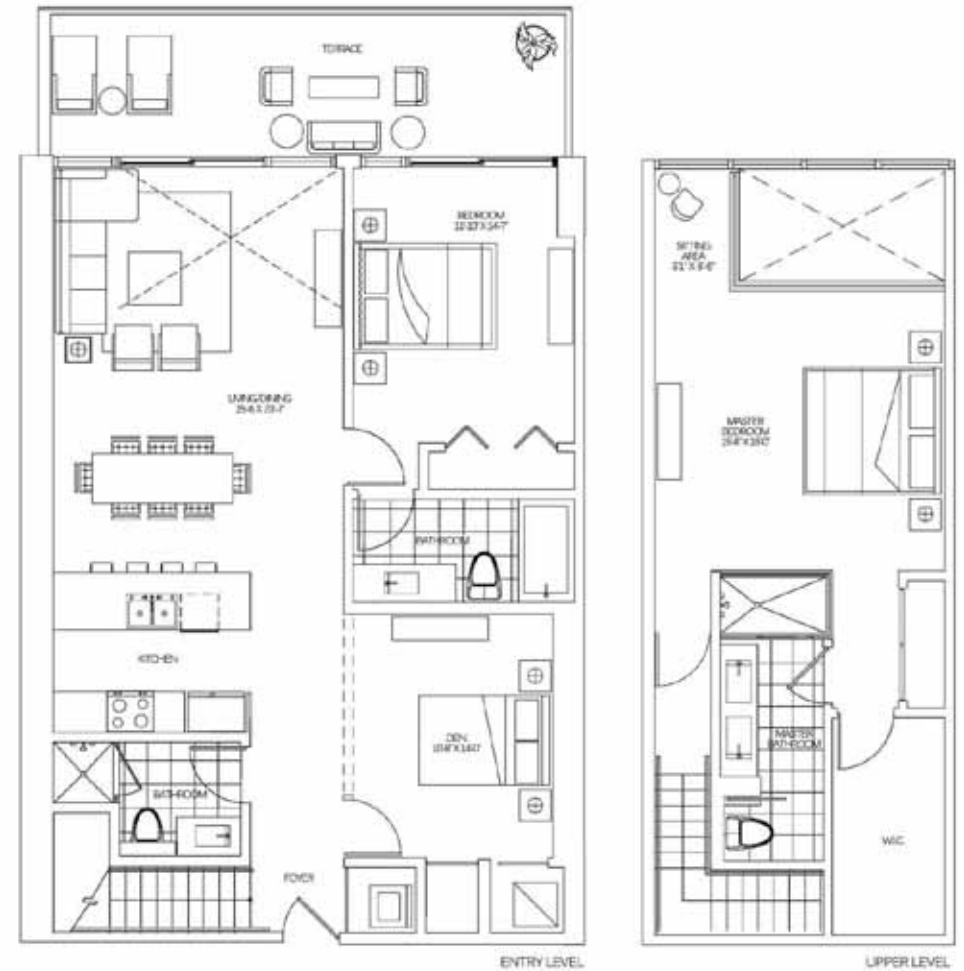
UNIT B GARDEN
 3 BEDROOMS / 2 BATHS
 3,632 SF TOTAL
 3653 m² TOTAL

400 SUNNY ISLES

KEY INTERNATIONAL

All dimensions, furniture items, finishes, and elevations are for illustrative purposes only and will not be included with the unit. Consult the prospectus for a description of the features which are included in the unit. Prices, features, and specifications are subject to change without notice. Our representations cannot be relied upon as constituting representations of the developer. For correct representations by the developer, make reference to documents required by Section 718.503 of the Florida Statutes, to be furnished by the developer to a buyer or lessee. The developer makes no representations or warranties regarding the actual size and dimensions of the units contained in this brochure, and no party may rely upon the same in determining whether to purchase a unit and the purchase price of the unit. The survey of the units and breakdown of the declaration of condominium shall control in determining the boundaries and actual dimensions of the units. Unit's square footage is measured using BCMA guidelines as described in the condominium documents. Pocket door will not be furnished by developer. Drawing is not to scale.

Prices, features, and specifications subject to change without notice. Our representations cannot be relied upon as constituting representations of the developer. For correct representations by the developer, make reference to documents required by sections 718.503 Florida Statutes, to be furnished by developer to a buyer or lessee. The developer makes no representations or warranties regarding the actual size and dimensions of the units contained in this brochure, and no party may rely upon the same in determining whether to purchase a unit and the purchase price of the unit. The survey of the units and breakdown of the declaration of condominium shall control in determining the boundaries and actual dimensions of the units. Pocket door will not be furnished by developer. Drawing not to scale.



400 SUNNY ISLES

KEY INTERNATIONAL

UNIT C
 2 BEDROOMS / DEN / LIVING / DINING / KITCHEN / BATH / TERRACE
 1,213 sq ft UNDERFLOOR + 210 sq ft TERRACE = 1,423 sq ft TOTAL



All fixtures, furniture, items of finish, and decorations are for display purposes only and will not be included with the unit. Prices, features, and specifications are subject to change without notice. Our representations should not be relied upon as a contract or warranty. The developer makes no representation or warranty regarding the actual area and dimensions of the unit contained in this brochure, and no party may rely upon the same in determining whether to purchase a unit or the purchase price of the unit. The quality of the unit and the possession of the unit shall be determined by the boundaries and actual dimensions of the unit. Unit square footage is measured using BOMA guidelines as described in the condominium documents. Pocket door will not be furnished by developer. Drawing is not to scale.

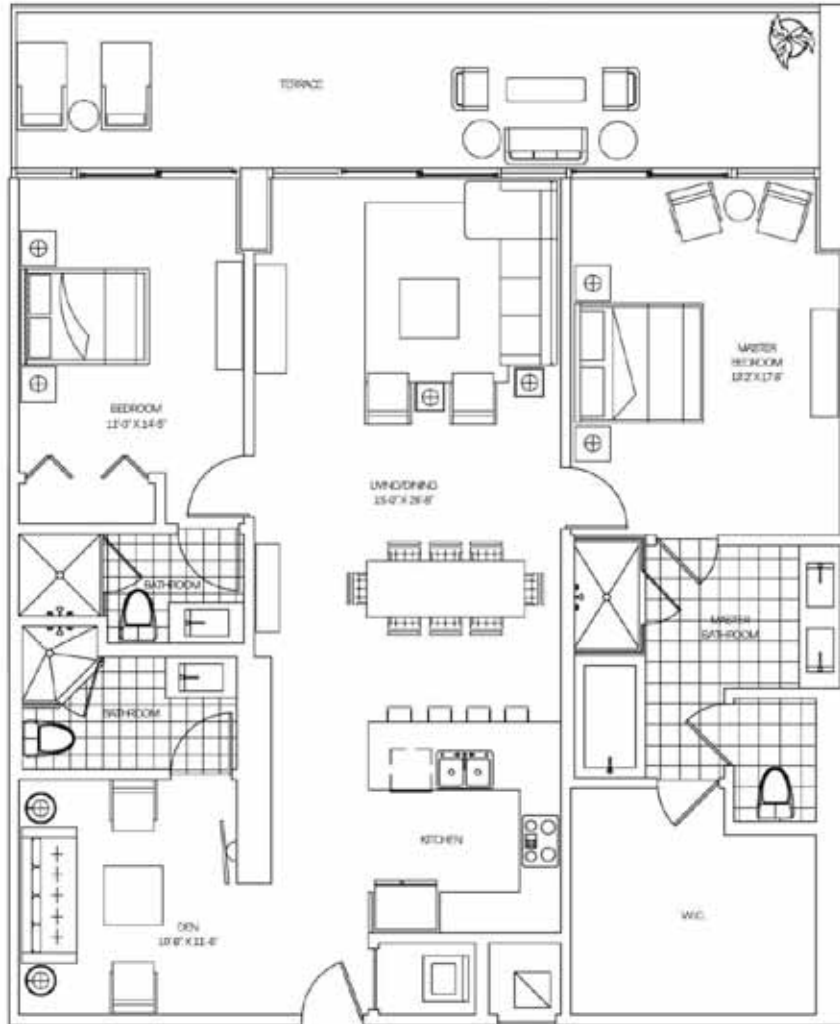
400 SUNNY ISLES

KEY INTERNATIONAL

UNIT D
 2 BEDROOMS / DEN / LIVING / DINING / KITCHEN / BATH / TERRACE
 1,176 sq ft UNDERFLOOR + 210 sq ft TERRACE = 1,386 sq ft TOTAL



All fixtures, furniture, items of finish, and decorations are for display purposes only and will not be included with the unit. Prices, features, and specifications are subject to change without notice. Our representations should not be relied upon as a contract or warranty. The developer makes no representation or warranty regarding the actual area and dimensions of the unit contained in this brochure, and no party may rely upon the same in determining whether to purchase a unit or the purchase price of the unit. The quality of the unit and the possession of the unit shall be determined by the boundaries and actual dimensions of the unit. Unit square footage is measured using BOMA guidelines as described in the condominium documents. Pocket door will not be furnished by developer. Drawing is not to scale.



400
SUNNY
ISLES
KEY INTERNATIONAL



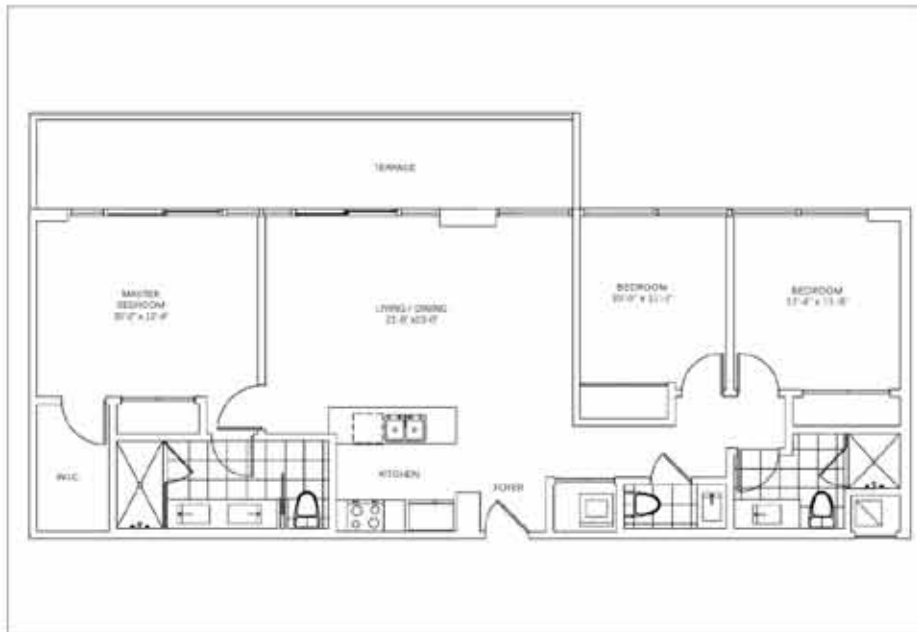
All fixtures, furniture, items of finish, and accessories are the property of the developer and shall not be included with the unit. Construction of the property is a description of the features which are to be included in the unit. Prices, features, and specifications are subject to change without notice. Our representations cannot be relied upon as constituting the representation of the developer. For correct representations by the developer, proper reference to documents required by Section 718.02 of the Florida Statutes is to be furnished by the developer in a copy of the plan. The developer makes no representation or warranty regarding the actual size and dimensions of the unit contained in this brochure, and the buyer may rely upon the same in determining whether to purchase it and on the purchase price of the unit. The survey of the unit and the provisions of the declaration of condominium shall control in determining the boundaries, structural dimensions of the unit. Units equipped with a swimming pool using DOWM guidelines as described in the condominium documents. Pictorial floor plans will not be furnished by developer. Drawing is not to scale.



400
SUNNY
ISLES
KEY INTERNATIONAL



All fixtures, furniture, items of finish, and accessories are the property of the developer and shall not be included with the unit. Construction of the property is a description of the features which are to be included in the unit. Prices, features, and specifications are subject to change without notice. Our representations cannot be relied upon as constituting the representation of the developer. For correct representations by the developer, proper reference to documents required by Section 718.02 of the Florida Statutes is to be furnished by the developer in a copy of the plan. The developer makes no representation or warranty regarding the actual size and dimensions of the unit contained in this brochure, and the buyer may rely upon the same in determining whether to purchase it and on the purchase price of the unit. The survey of the unit and the provisions of the declaration of condominium shall control in determining the boundaries, structural dimensions of the unit. Units equipped with a swimming pool using DOWM guidelines as described in the condominium documents. Pictorial floor plans will not be furnished by developer. Drawing is not to scale.



FLAT
 3 BEDROOMS / 2.5 BATHS
 1,350 SF UNDER A/C + 192 SF TERRACE = 1,542 SF TOTAL
 125.4 m² UNDER A/C + 17.8 m² TERRACE = 143.3 m² TOTAL
 FLOORS 3 THROUGH 15



LOFT
 2 BEDROOMS / DEN / 3 BATHS
 (3 BEDROOM CONVERTIBLE)
 1,563 SF UNDER A/C + 139 SF TERRACE = 1,702 SF TOTAL
 139.6 m² UNDER A/C + 12.9 m² TERRACE = 152.5 m² TOTAL
 ENTRY LEVEL ON FLOOR 1

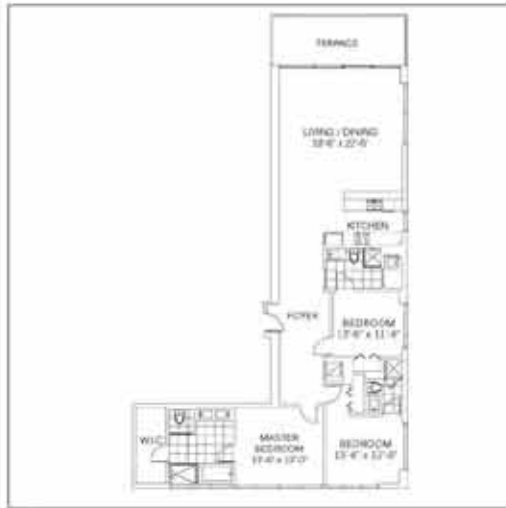
400
 SUNNY
 ISLES

KEY INTERNATIONAL

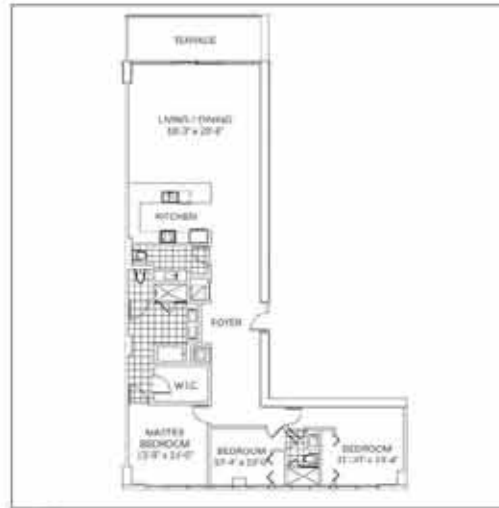
Prices, features, and specifications are subject to change without notice. Oral representations cannot be relied upon as correctly stating the representations of the developer. For correct representations by the developer, make reference to documents required by Section 718.503 of the Florida Statutes, to be furnished by the developer to a buyer or lessee. The developer makes no representations or warranties regarding the actual size and dimensions of the units contained in this brochure, and no party may rely upon the same in determining whether to purchase a unit and the purchase price of the unit. The survey of the units and the provisions of the declaration of condominium shall control in determining the boundaries and actual dimensions of the units. Unit's square footage is measured using BOMA guidelines as described in the condominium documents. Pocket door will not be furnished by developer. Drawing is not to scale.

MARINA / BAY

LOFT	LOFT	LOFT	LOFT	LOFT	LOFT
------	------	------	------	------	------



UNIT A
 3 BEDROOM / 3 BATHS
 1,672 SF UNDER A/C + 100 SF TERRACE = 2,032 SF TOTAL
 173.9 m² UNDER A/C + 14.9 m² TERRACE = 188.8 m² TOTAL
 FLOORS 6 THROUGH 10



UNIT B
 3 BEDROOMS / 3 BATHS
 1,638 SF UNDER A/C + 155 SF TERRACE = 1,993 SF TOTAL
 170.8 m² UNDER A/C + 14.4 m² TERRACE = 185.2 m² TOTAL
 FLOORS 6 THROUGH 10



UNIT C
 2 BEDROOMS / DEN / 3 BATHS
 (3 BEDROOM CONVERTIBLE)
 1,849 SF UNDER A/C + 226 SF TERRACE = 2,075 SF TOTAL
 171.8 m² UNDER A/C + 21.0 m² TERRACE = 192.8 m² TOTAL
 ENTRY LEVEL ON FLOORS 9, 12, 16, & 19



UNIT D
 2 BEDROOMS / DEN / 3 BATHS
 (3 BEDROOM CONVERTIBLE)
 1,769 SF UNDER A/C + 226 SF TERRACE = 1,995 SF TOTAL
 164.3 m² UNDER A/C + 21.0 m² TERRACE = 185.3 m² TOTAL
 ENTRY LEVEL ON FLOORS 9, 12, 16, & 19



UNIT E
 2 BEDROOMS / DEN / 3 BATHS
 (3 BEDROOM CONVERTIBLE)
 1,692 SF UNDER A/C + 322 SF TERRACE = 2,014 SF TOTAL
 157.2 m² UNDER A/C + 29.9 m² TERRACE = 187.1 m² TOTAL
 FLOORS 8, 10, 11, 14, 15, 17, 18, & 20



UNIT F
 1 BEDROOMS / DEN / 2 BATHS
 (2 BEDROOM CONVERTIBLE)
 1,206 SF UNDER A/C + 226 SF TERRACE = 1,432 SF TOTAL
 112.0 m² UNDER A/C + 21.0 m² TERRACE = 133.0 m² TOTAL
 FLOORS 6 & 7

400
SUNNY
ISLES

KEY INTERNATIONAL

Prices, features, and specifications are subject to change without notice. Oral representations cannot be relied upon as correctly stating the representations of the developer. For correct representations by the developer, make reference to documents required by Section 718.503 of the Florida Statutes, to be furnished by the developer to a buyer or lessee. The developer makes no representations or warranties regarding the actual size and dimensions of the units contained in this brochure, and no party may rely upon the same in determining whether to purchase a unit and the purchase price of the unit. The survey of the units and the provisions of the declaration of condominium shall control in determining the boundaries and actual dimensions of the units. Unit's square footage is measured using BOMA guidelines as described in the condominium documents. Pocket door will not be furnished by developer. Drawing is not to scale.

