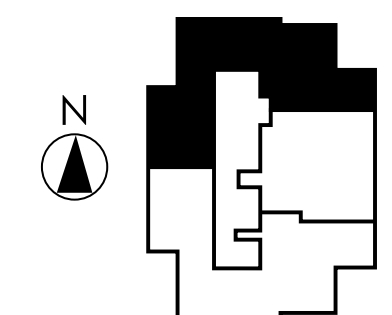
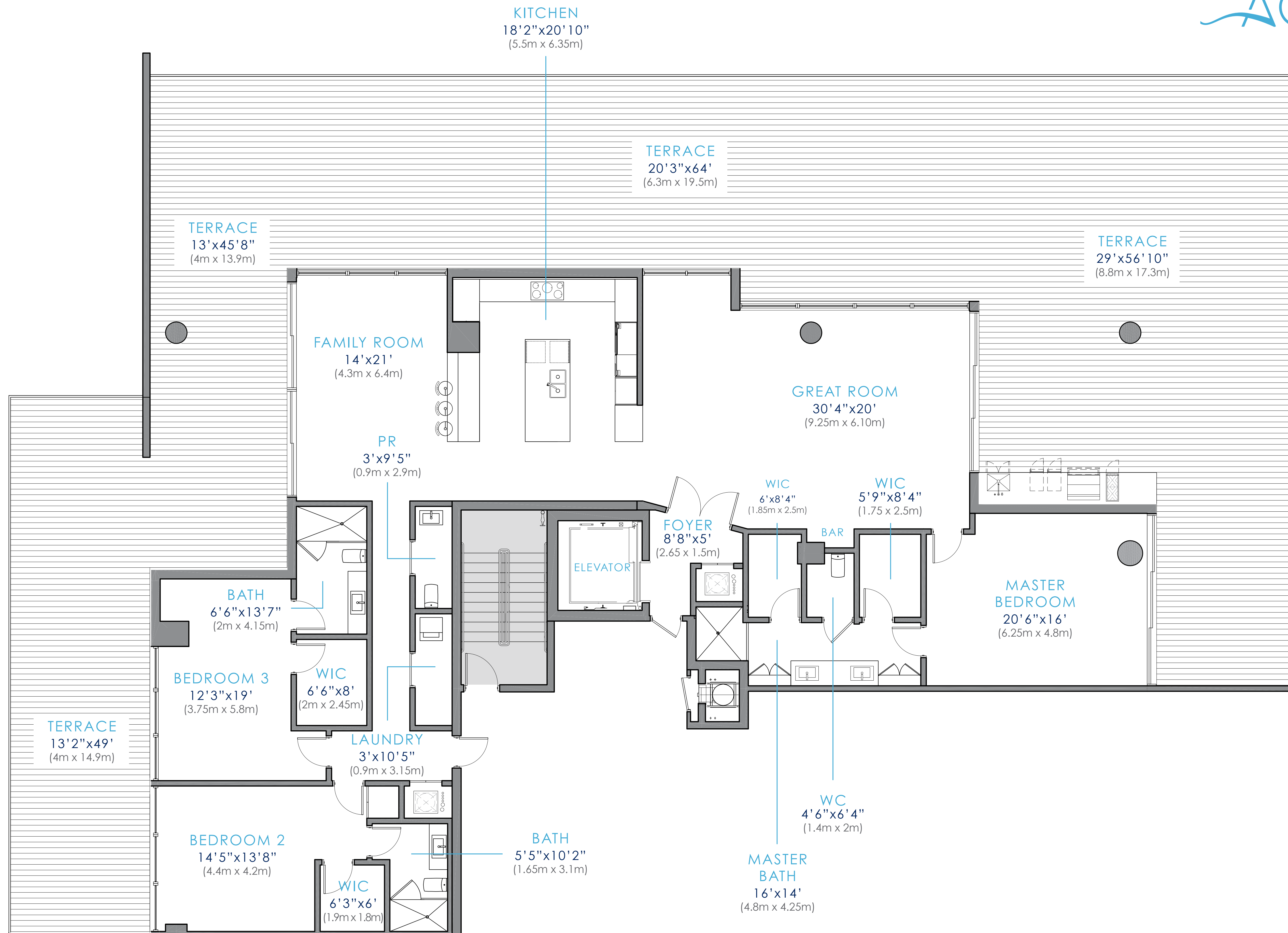


SAPPHIRE
FLOOR 5
3 BD | 3.5 BA
6,986.4 sf (649.1 m²)

CITY VIEWS

INTRACOASTAL
& OCEAN VIEWS



SAPPHIRE

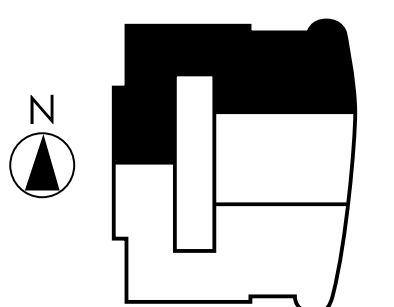
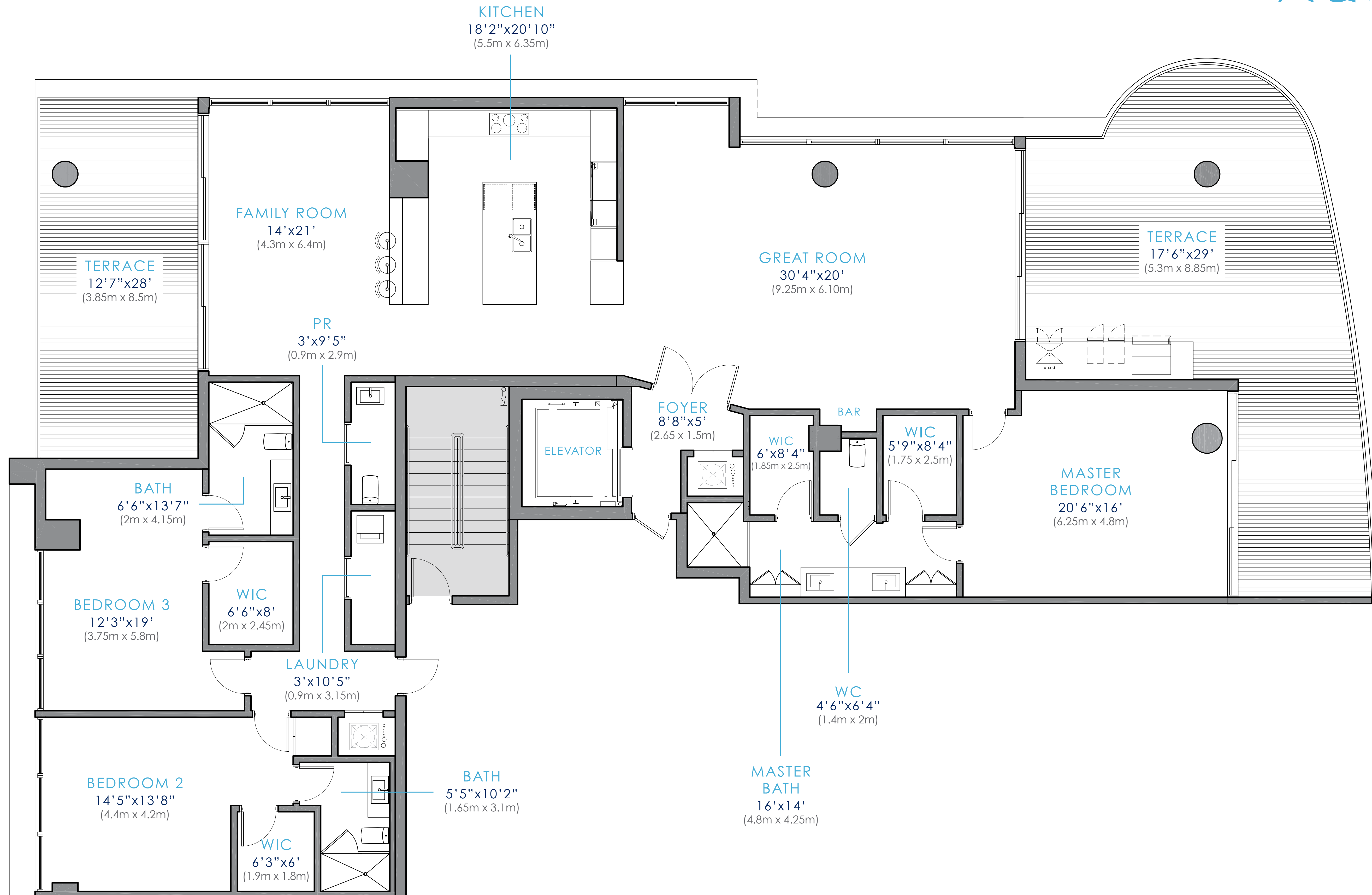
FLOORS 6-16

3 BD | 3.5 BA

4,184.4 sf (388.7 m²)

CITY VIEWS

INTRACOASTAL
& OCEAN VIEWS

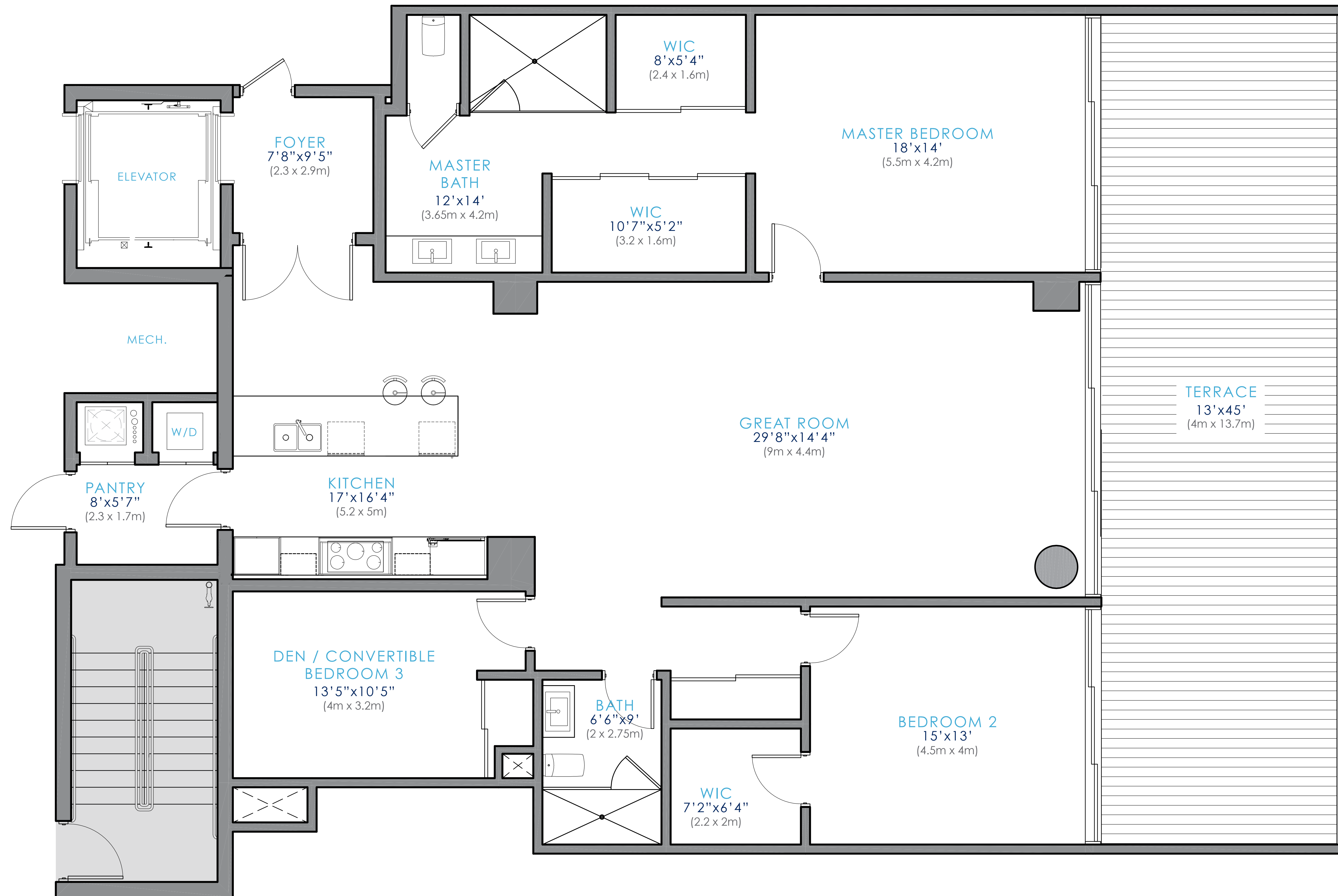


INDIGO

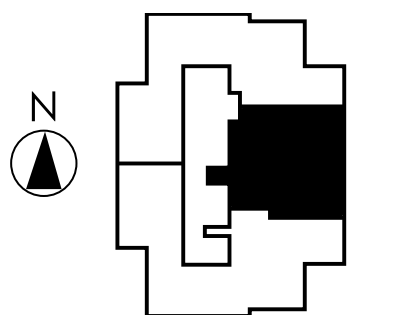
FLOOR 5

2 BD + Den | 2 BA
2,712.7 sf (251.9 m²)

CITY VIEWS



INTRACOASTAL
& OCEAN VIEWS

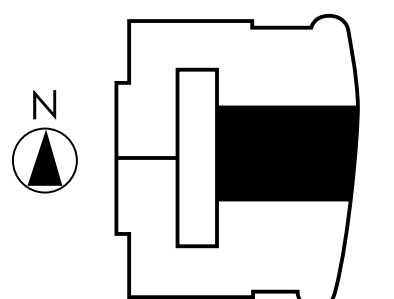
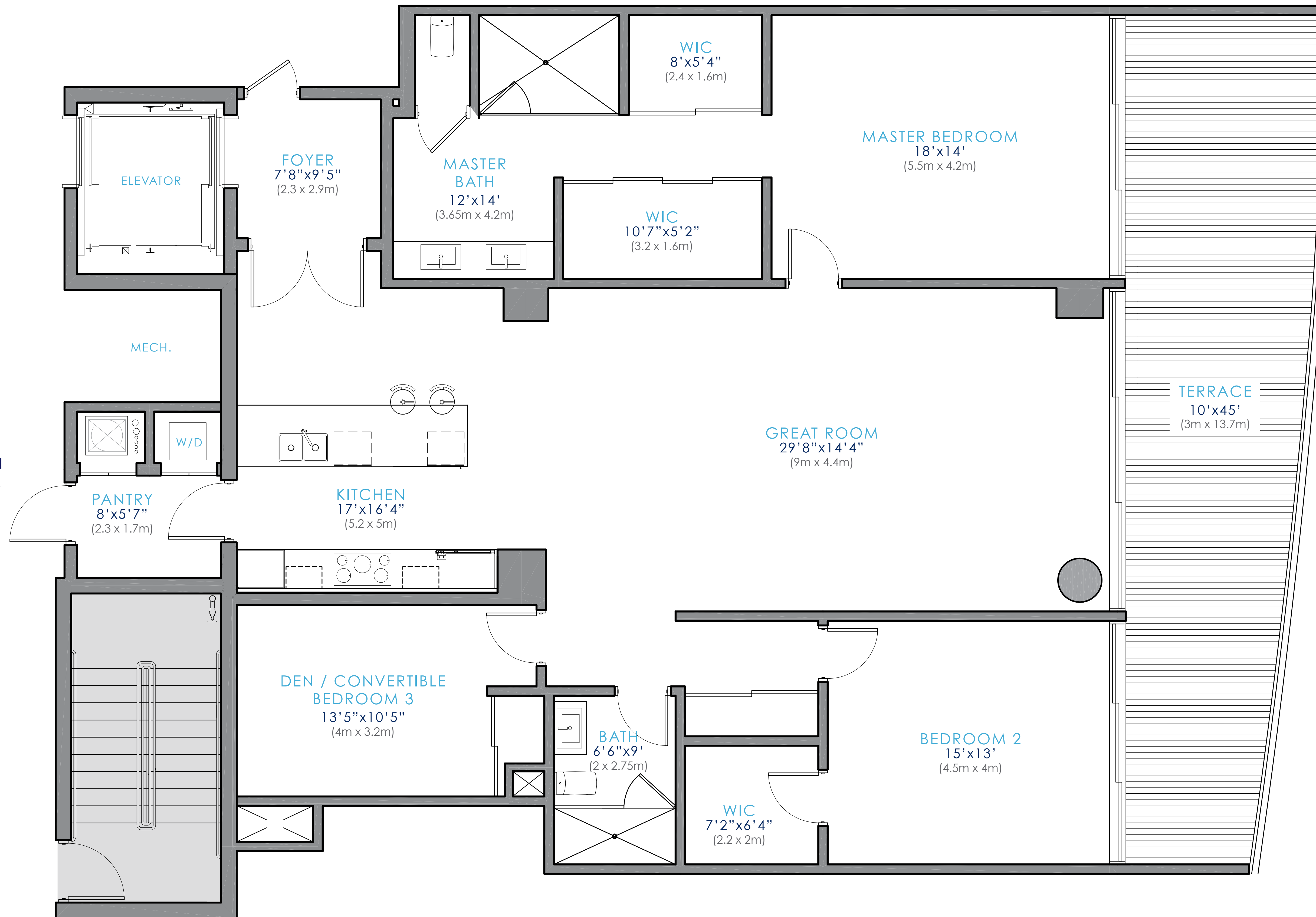


INDIGO

FLOORS 6-16
2 BD + Den | 2 BA
2,547 sf (236.6 m²)

CITY VIEWS

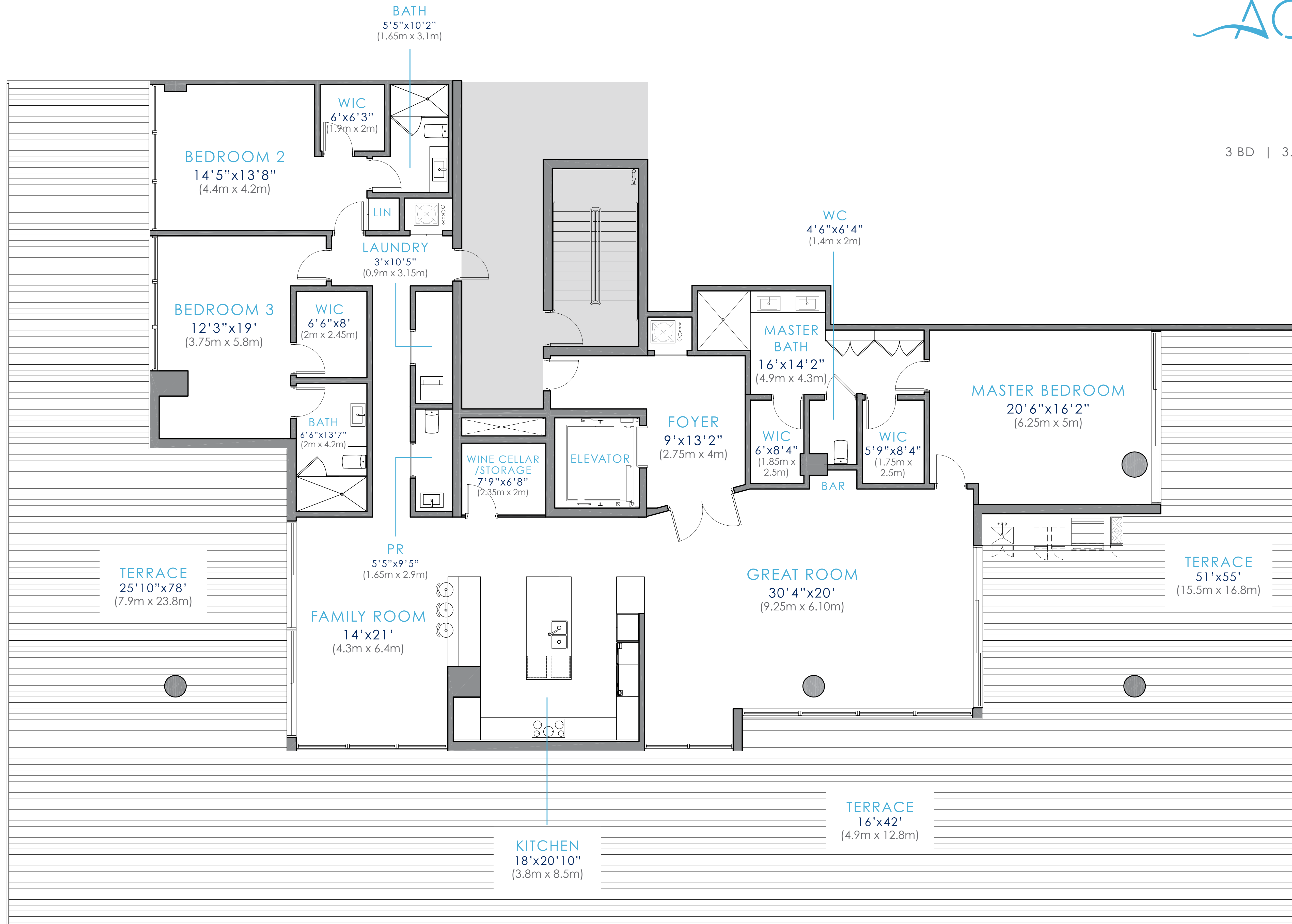
INTRACOASTAL
& OCEAN VIEWS



AZURE

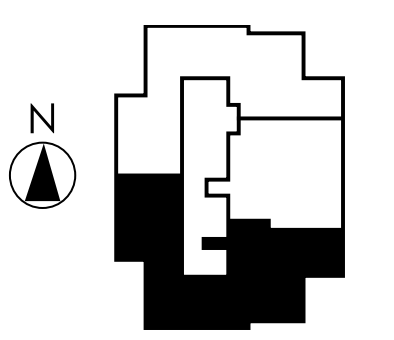
FLOOR 5

3 BD | 3.5 BA | 7,251 SF (673.6 m²)



CITY VIEWS

INTRACOASTAL
& OCEAN VIEWS



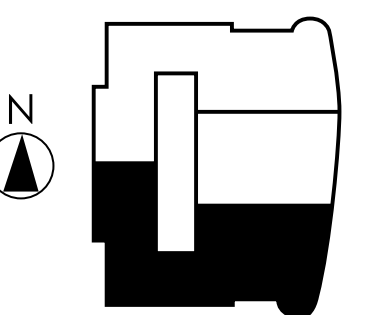
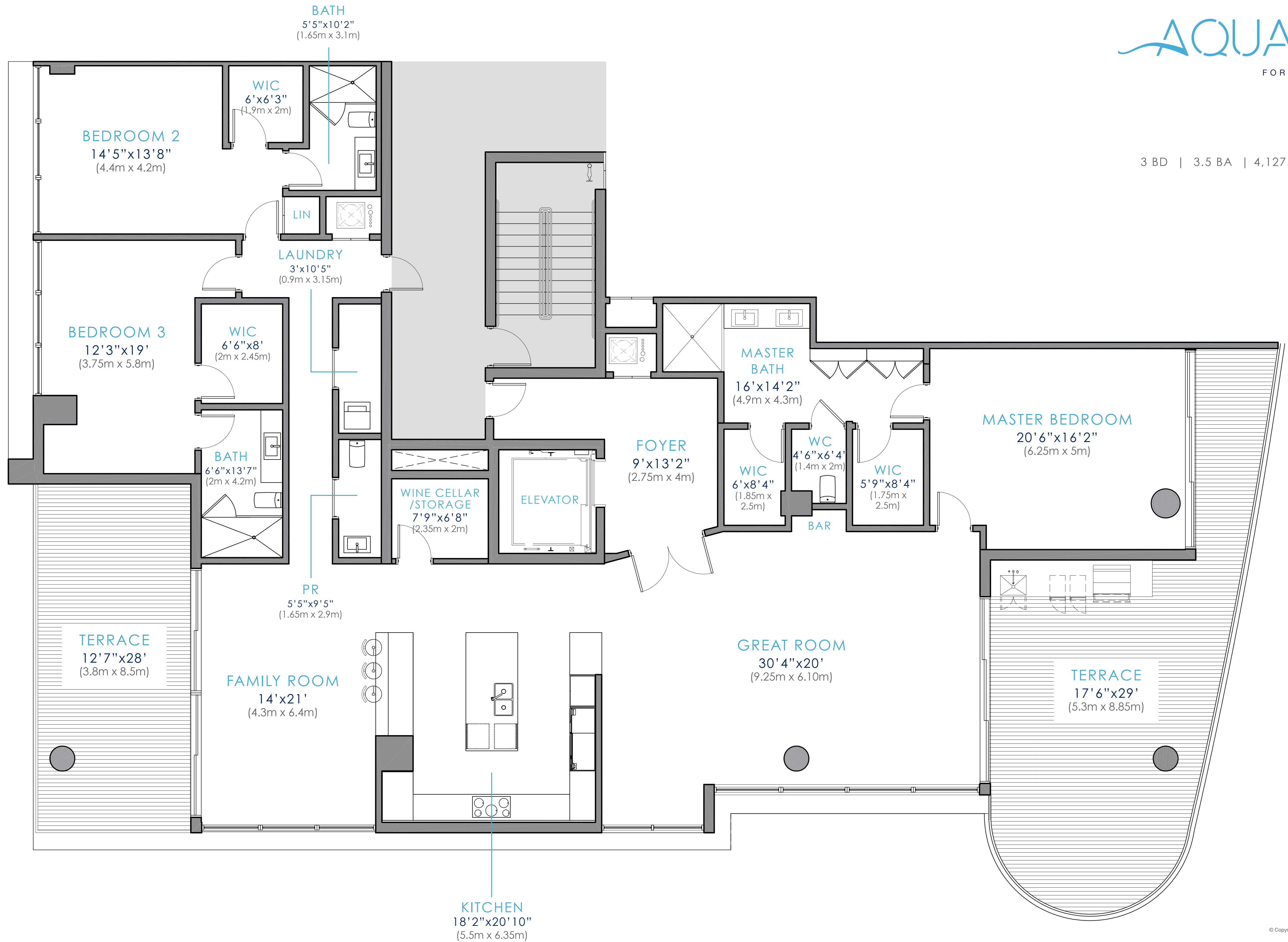
AZURE

FLOORS 6-16

3 BD | 3.5 BA | 4,127.3 SF (383.4 m²)

CITY VIEWS

INTRACOASTAL
& OCEAN VIEWS



OXFORD

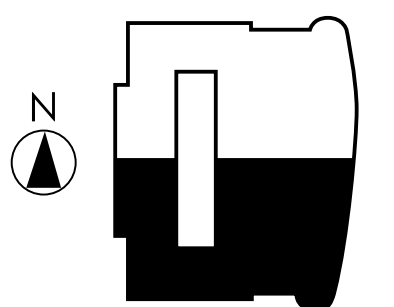
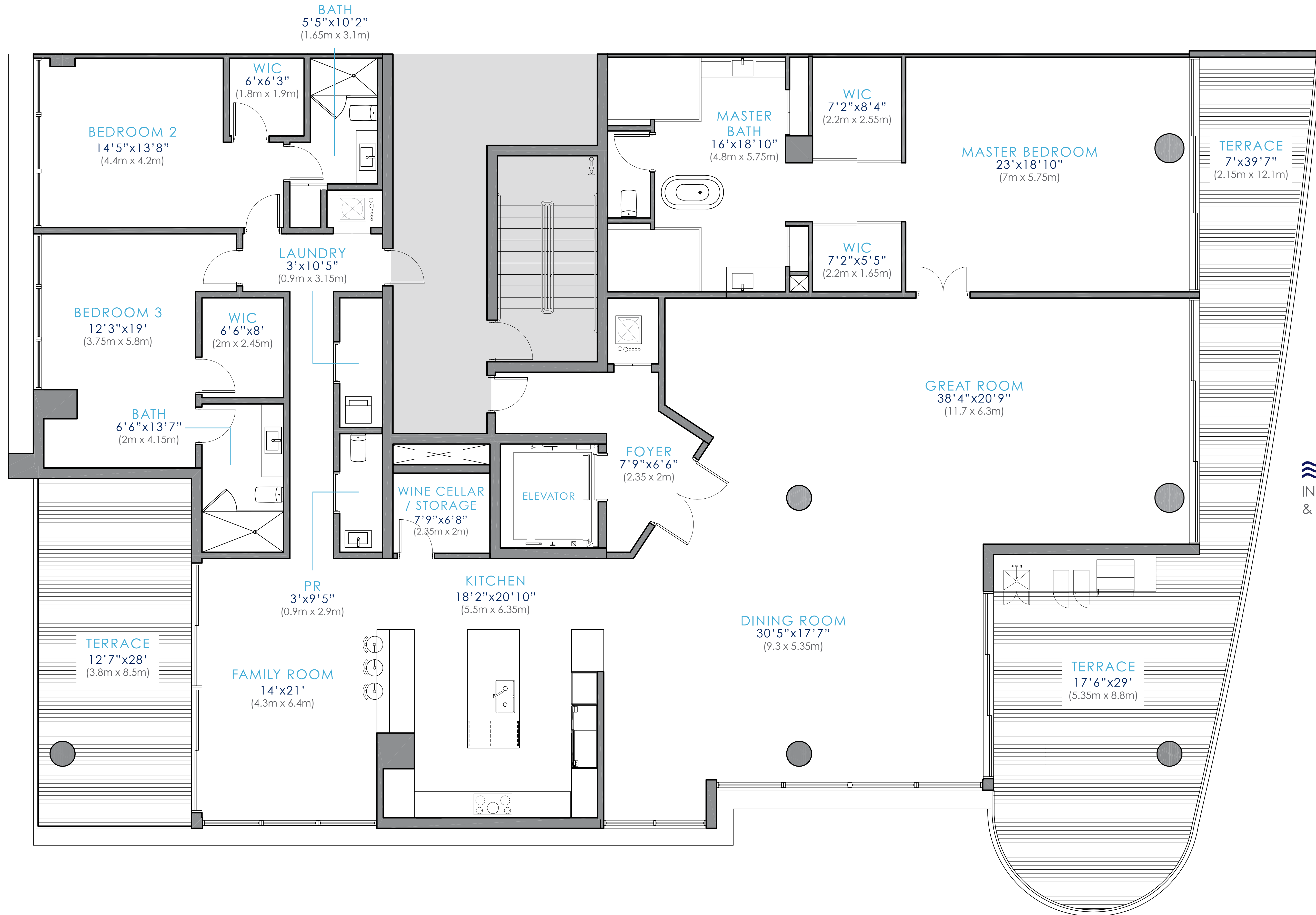
SOUTH PENTHOUSE

3 BD | 3.5 BA

5,345 sf (497.5 m²)

CITY VIEWS

INTRACOASTAL
& OCEAN VIEWS



ROYAL
NORTH PENTHOUSE
3 BD | 3.5 BA
5,345 sf (497.5 m²)

CITY VIEWS

INTRACOASTAL
& OCEAN VIEWS

