

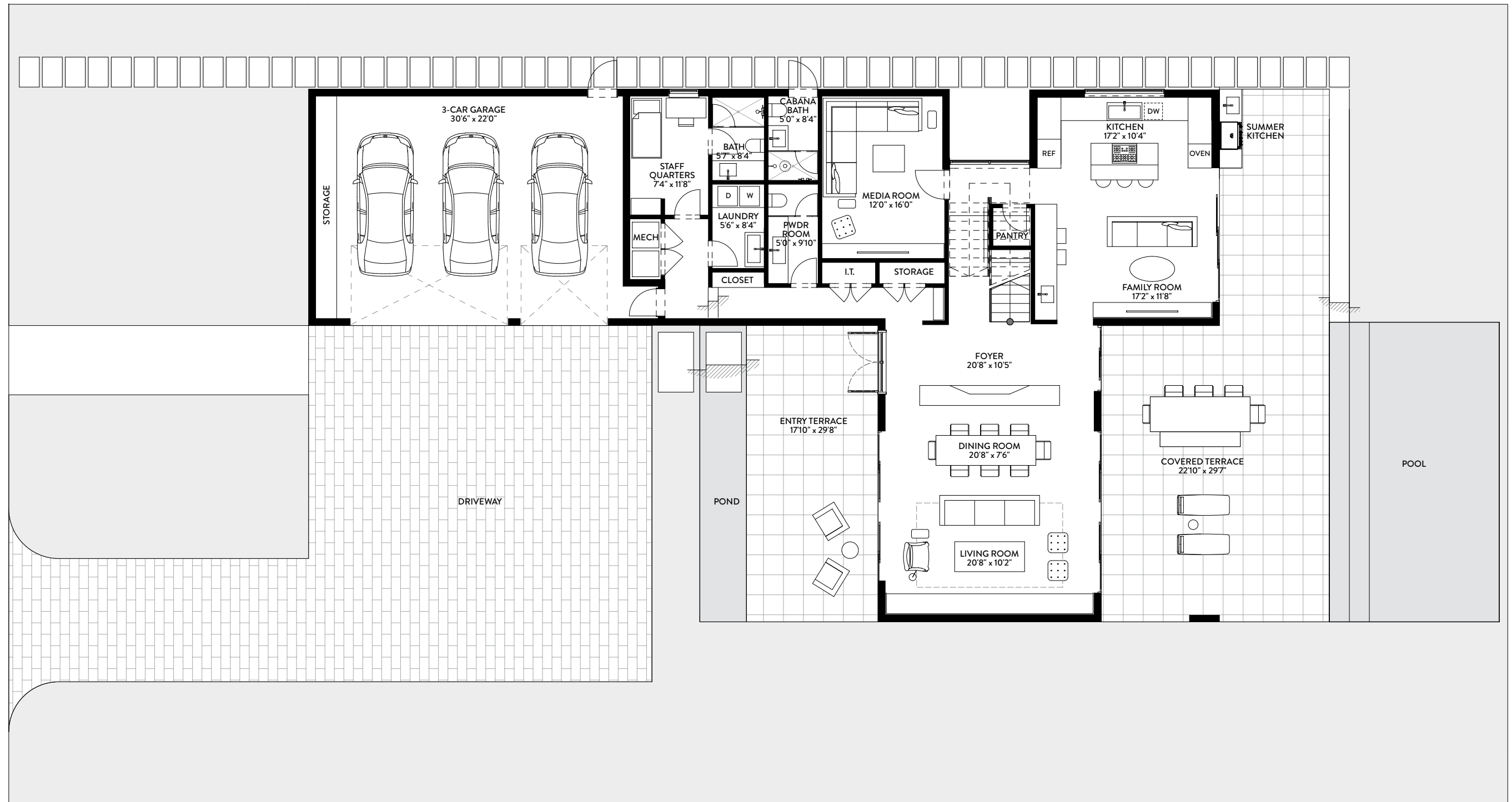


ARTISTS CONCEPTUAL RENDERING

OPPENHEIM ARCHITECTURE
RESIDENCE / 01

BOTANIKO
WESTON

These drawings and depictions are conceptual only and are for the convenience of reference and including artists renderings. They should not be relied upon as representations, express or implied, of the final detail of the residences. The developer expressly reserves the right to make modifications, revisions, and changes it deems desirable in its sole and absolute discretion.



O1 | FIRST FLOOR
4 BEDROOMS / 6.5 BATHS /
MEDIA ROOM / STAFF QUARTERS

FIRST FLOOR	SQ. FT.	SQ. M.
INTERIOR	2,020	188
EXTERIOR	1,943	181
TOTAL FIRST FLOOR	3,963	369

SECOND FLOOR	SQ. FT.	SQ. M.
INTERIOR	2,228	207
EXTERIOR	712	66
TOTAL SECOND FLOOR	2,940	273

TOTAL	SQ. FT.	SQ. M.
TOTAL INTERIOR	4,248	395
TOTAL EXTERIOR	2,655	247
TOTAL	6,903	642

BOTANIKO
 WESTON

Stated dimensions are measured to the exterior boundaries of the exterior walls and the centerline of interior demising walls and in fact vary from the dimensions that would be determined by using the description and definition of the "Unit" set forth in the Declaration (which generally only includes the interior airspace between the perimeter walls and excludes interior structural components). Note that measurements of rooms set forth on this floor plan are generally taken at the greatest points of each given room (as if the room were a perfect rectangle), without regard for any cutouts. Accordingly, the area of the actual room will typically be smaller than the product obtained by multiplying the stated length times width. All dimensions are approximate and may vary with actual construction, and all floor plans and development plans are subject to change.

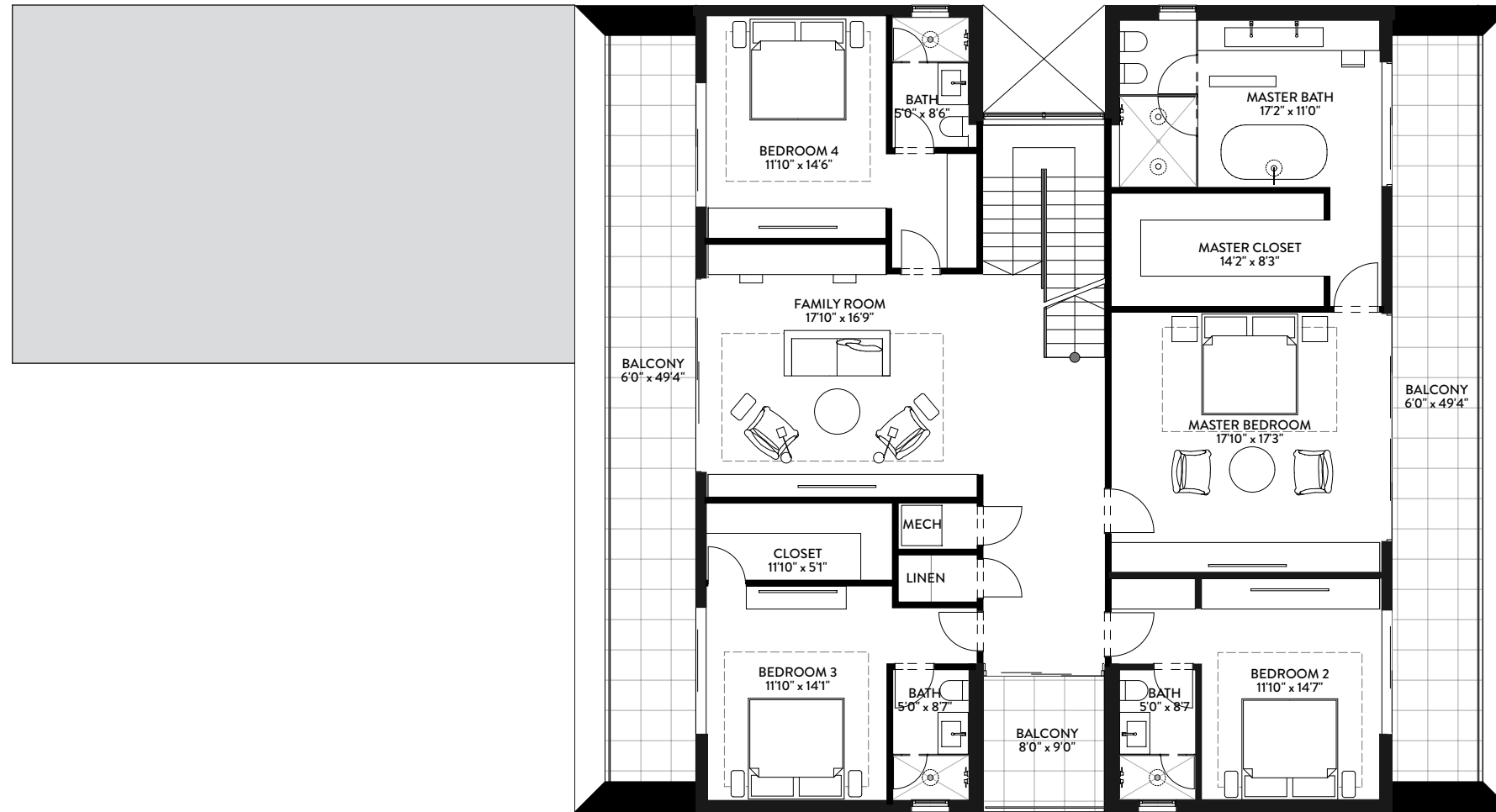


ARTIST'S CONCEPTUAL RENDERING

OPPENHEIM ARCHITECTURE
RESIDENCE / O1

BOTANIKO
WESTON

These drawings and depictions are conceptual only and are for the convenience of reference and including artists renderings. They should not be relied upon as representations, express or implied, of the final detail of the residences. The developer expressly reserves the right to make modifications, revisions, and changes it deems desirable in its sole and absolute discretion.



O1 | SECOND FLOOR
4 BEDROOMS / 6.5 BATHS /
MEDIA ROOM / STAFF QUARTERS

FIRST FLOOR	SQ. FT.	SQ. M.
INTERIOR	2,020	188
EXTERIOR	1,943	181
TOTAL FIRST FLOOR	3,963	369

SECOND FLOOR	SQ. FT.	SQ. M.
INTERIOR	2,228	207
EXTERIOR	712	66
TOTAL SECOND FLOOR	2,940	273

TOTAL	SQ. FT.	SQ. M.
TOTAL INTERIOR	4,248	395
TOTAL EXTERIOR	2,655	247
TOTAL	6,903	642

BOTANIKO
 WESTON

Stated dimensions are measured to the exterior boundaries of the exterior walls and the centerline of interior demising walls and in fact vary from the dimensions that would be determined by using the description and definition of the "Unit" set forth in the Declaration (which generally only includes the interior airspace between the perimeter walls and excludes interior structural components). Note that measurements of rooms set forth on this floor plan are generally taken at the greatest points of each given room (as if the room were a perfect rectangle), without regard for any cutouts. Accordingly, the area of the actual room will typically be smaller than the product obtained by multiplying the stated length times width. All dimensions are approximate and may vary with actual construction, and all floor plans and development plans are subject to change.



ARTIST'S CONCEPTUAL RENDERING

OPPENHEIM ARCHITECTURE
RESIDENCE / O2

BOTANIKO
WESTON

These drawings and depictions are conceptual only and are for the convenience of reference and including artists renderings. They should not be relied upon as representations, express or implied, of the final detail of the residences. The developer expressly reserves the right to make modifications, revisions, and changes it deems desirable in its sole and absolute discretion.



O2
5 BEDROOMS / 7.5 BATHS /
STAFF QUARTERS

	TOTAL	SQ. FT.	SQ. M.
TOTAL INTERIOR		5,034	468
TOTAL EXTERIOR		3,168	294
TOTAL		8,202	762

BOTANIKO
 WESTON

Stated dimensions are measured to the exterior boundaries of the exterior walls and the centerline of interior demising walls and in fact vary from the dimensions that would be determined by using the description and definition of the "Unit" set forth in the Declaration (which generally only includes the interior airspace between the perimeter walls and excludes interior structural components). Note that measurements of rooms set forth on this floor plan are generally taken at the greatest points of each given room (as if the room were a perfect rectangle), without regard for any cutouts. Accordingly, the area of the actual room will typically be smaller than the product obtained by multiplying the stated length times width. All dimensions are approximate and may vary with actual construction, and all floor plans and development plans are subject to change.

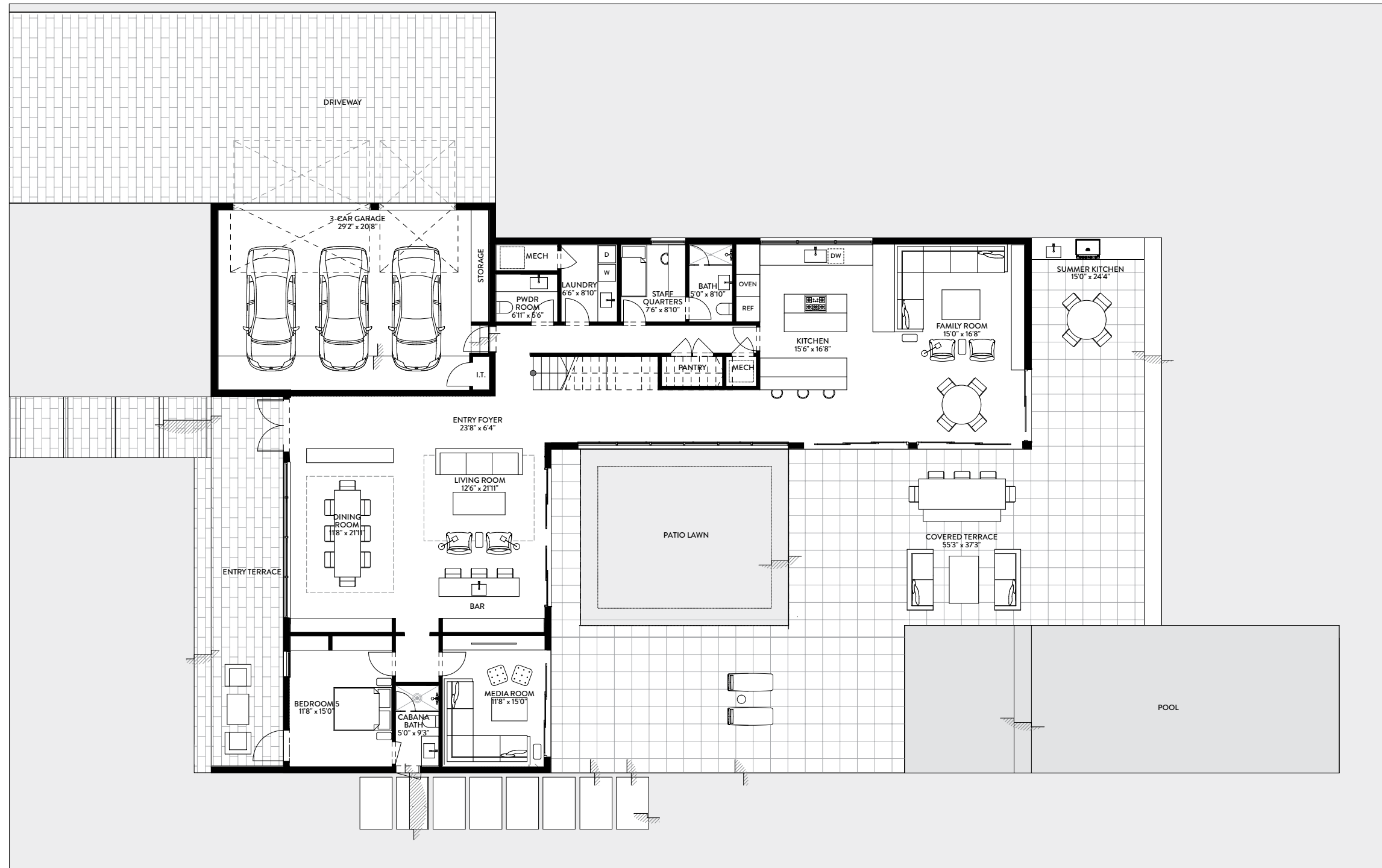


ARTISTS CONCEPTUAL RENDERING

OPPENHEIM ARCHITECTURE
RESIDENCE / O3

BOTANIKO
WESTON

These drawings and depictions are conceptual only and are for the convenience of reference and including artists renderings. They should not be relied upon as representations, express or implied, of the final detail of the residences. The developer expressly reserves the right to make modifications, revisions, and changes it deems desirable in its sole and absolute discretion.



O3 | FIRST FLOOR
5 BEDROOMS / 6.5 BATHS /
MEDIA ROOM / STAFF QUARTERS

FIRST FLOOR	SQ. FT.	SQ. M.
INTERIOR	2,831	263
EXTERIOR	2,539	236
TOTAL FIRST FLOOR	5,370	499

SECOND FLOOR	SQ. FT.	SQ. M.
INTERIOR	2,644	246
EXTERIOR	686	64
TOTAL SECOND FLOOR	3,330	310

TOTAL	SQ. FT.	SQ. M.
TOTAL INTERIOR	5,475	509
TOTAL EXTERIOR	3,225	300
TOTAL	8,700	809

BOTANIKO
 WESTON

Stated dimensions are measured to the exterior boundaries of the exterior walls and the centerline of interior demising walls and in fact vary from the dimensions that would be determined by using the description and definition of the "Unit" set forth in the Declaration (which generally only includes the interior airspace between the perimeter walls and excludes interior structural components). Note that measurements of rooms set forth on this floor plan are generally taken at the greatest points of each given room (as if the room were a perfect rectangle), without regard for any cutouts. Accordingly, the area of the actual room will typically be smaller than the product obtained by multiplying the stated length times width. All dimensions are approximate and may vary with actual construction, and all floor plans and development plans are subject to change.



OPPENHEIM ARCHITECTURE
RESIDENCE / O3

BOTANIKO
WESTON



O3 | SECOND FLOOR
5 BEDROOMS / 6.5 BATHS /
MEDIA ROOM / STAFF QUARTERS

FIRST FLOOR	SQ. FT.	SQ. M.
INTERIOR	2,831	263
EXTERIOR	2,539	236
TOTAL FIRST FLOOR	5,370	499

SECOND FLOOR	SQ. FT.	SQ. M.
INTERIOR	2,644	246
EXTERIOR	686	64
TOTAL SECOND FLOOR	3,330	310

TOTAL	SQ. FT.	SQ. M.
TOTAL INTERIOR	5,475	509
TOTAL EXTERIOR	3,225	300
TOTAL	8,700	809

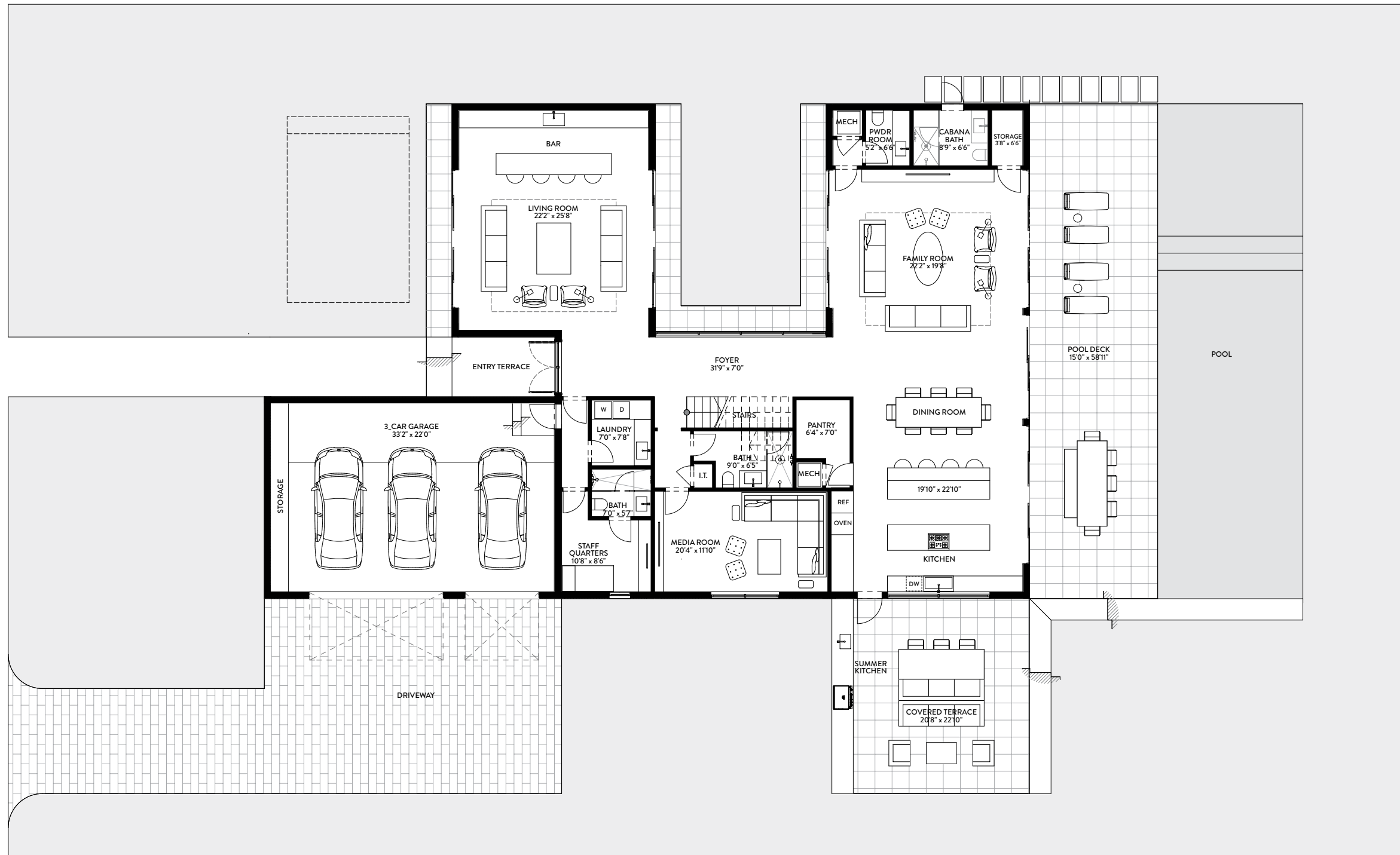
BOTANIKO
 WESTON

Stated dimensions are measured to the exterior boundaries of the exterior walls and the centerline of interior demising walls and in fact vary from the dimensions that would be determined by using the description and definition of the "Unit" set forth in the Declaration (which generally only includes the interior airspace between the perimeter walls and excludes interior structural components). Note that measurements of rooms set forth on this floor plan are generally taken at the greatest points of each given room (as if the room were a perfect rectangle), without regard for any cutouts. Accordingly, the area of the actual room will typically be smaller than the product obtained by multiplying the stated length times width. All dimensions are approximate and may vary with actual construction, and all floor plans and development plans are subject to change.



OPPENHEIM ARCHITECTURE
RESIDENCE / O4

BOTANIKO
WESTON



O4 | FIRST FLOOR
5 BEDROOMS / 9.5 BATHS / LOFT /
MEDIA ROOM / STAFF QUARTERS

FIRST FLOOR	SQ. FT.	SQ. M.
INTERIOR	3,025	281
EXTERIOR	2,185	203
TOTAL FIRST FLOOR	5,210	484

SECOND FLOOR	SQ. FT.	SQ. M.
INTERIOR	3,144	292
EXTERIOR	1,003	93
TOTAL SECOND FLOOR	4,147	385

TOTAL	SQ. FT.	SQ. M.
TOTAL INTERIOR	6,169	573
TOTAL EXTERIOR	3,188	296
TOTAL	9,357	869

BOTANIKO
 WESTON

Stated dimensions are measured to the exterior boundaries of the exterior walls and the centerline of interior demising walls and in fact vary from the dimensions that would be determined by using the description and definition of the "Unit" set forth in the Declaration (which generally only includes the interior airspace between the perimeter walls and excludes interior structural components). Note that measurements of rooms set forth on this floor plan are generally taken at the greatest points of each given room (as if the room were a perfect rectangle), without regard for any cutouts. Accordingly, the area of the actual room will typically be smaller than the product obtained by multiplying the stated length times width. All dimensions are approximate and may vary with actual construction, and all floor plans and development plans are subject to change.



OPPENHEIM ARCHITECTURE
RESIDENCE / O4

BOTANIKO
WESTON



O4 | SECOND FLOOR
5 BEDROOMS / 9.5 BATHS / LOFT /
MEDIA ROOM / STAFF QUARTERS

FIRST FLOOR	SQ. FT.	SQ. M.
INTERIOR	3,025	281
EXTERIOR	2,185	203
TOTAL FIRST FLOOR	5,210	484

SECOND FLOOR	SQ. FT.	SQ. M.
INTERIOR	3,144	292
EXTERIOR	1,003	93
TOTAL SECOND FLOOR	4,147	385

TOTAL	SQ. FT.	SQ. M.
TOTAL INTERIOR	6,169	573
TOTAL EXTERIOR	3,188	296
TOTAL	9,357	869

BOTANIKO
 WESTON

Stated dimensions are measured to the exterior boundaries of the exterior walls and the centerline of interior demising walls and in fact vary from the dimensions that would be determined by using the description and definition of the "Unit" set forth in the Declaration (which generally only includes the interior airspace between the perimeter walls and excludes interior structural components). Note that measurements of rooms set forth on this floor plan are generally taken at the greatest points of each given room (as if the room were a perfect rectangle), without regard for any cutouts. Accordingly, the area of the actual room will typically be smaller than the product obtained by multiplying the stated length times width. All dimensions are approximate and may vary with actual construction, and all floor plans and development plans are subject to change.



OPPENHEIM ARCHITECTURE
RESIDENCE / O5

BOTANIKO
WESTON



O5 | FIRST FLOOR
6 BEDROOMS / 8.5 BATHS /
MEDIA ROOM / STAFF QUARTERS

FIRST FLOOR	SQ. FT.	SQ. M.
INTERIOR	4,018	373
EXTERIOR	1,899	176
TOTAL FIRST FLOOR	5,917	549

SECOND FLOOR	SQ. FT.	SQ. M.
INTERIOR	3,200	297
EXTERIOR	491	46
TOTAL SECOND FLOOR	3,691	343

TOTAL	SQ. FT.	SQ. M.
TOTAL INTERIOR	7,218	670
TOTAL EXTERIOR	2,390	222
TOTAL	9,608	892

BOTANIKO
 WESTON

Stated dimensions are measured to the exterior boundaries of the exterior walls and the centerline of interior demising walls and in fact vary from the dimensions that would be determined by using the description and definition of the "Unit" set forth in the Declaration (which generally only includes the interior airspace between the perimeter walls and excludes interior structural components). Note that measurements of rooms set forth on this floor plan are generally taken at the greatest points of each given room (as if the room were a perfect rectangle), without regard for any cutouts. Accordingly, the area of the actual room will typically be smaller than the product obtained by multiplying the stated length times width. All dimensions are approximate and may vary with actual construction, and all floor plans and development plans are subject to change.



ARTIST'S CONCEPTUAL RENDERING

OPPENHEIM ARCHITECTURE
RESIDENCE / O5

BOTANIKO
WESTON

These drawings and depictions are conceptual only and are for the convenience of reference and including artists renderings. They should not be relied upon as representations, express or implied, of the final detail of the residences. The developer expressly reserves the right to make modifications, revisions, and changes it deems desirable in its sole and absolute discretion.



O5 | SECOND FLOOR
6 BEDROOMS / 8.5 BATHS /
MEDIA ROOM / STAFF QUARTERS

FIRST FLOOR	SQ. FT.	SQ. M.
INTERIOR	4,018	373
EXTERIOR	1,899	176
TOTAL FIRST FLOOR	5,917	549

SECOND FLOOR	SQ. FT.	SQ. M.
INTERIOR	3,200	297
EXTERIOR	491	46
TOTAL SECOND FLOOR	3,691	343

TOTAL	SQ. FT.	SQ. M.
TOTAL INTERIOR	7,218	670
TOTAL EXTERIOR	2,390	222
TOTAL	9,608	892

BOTANIKO
 WESTON

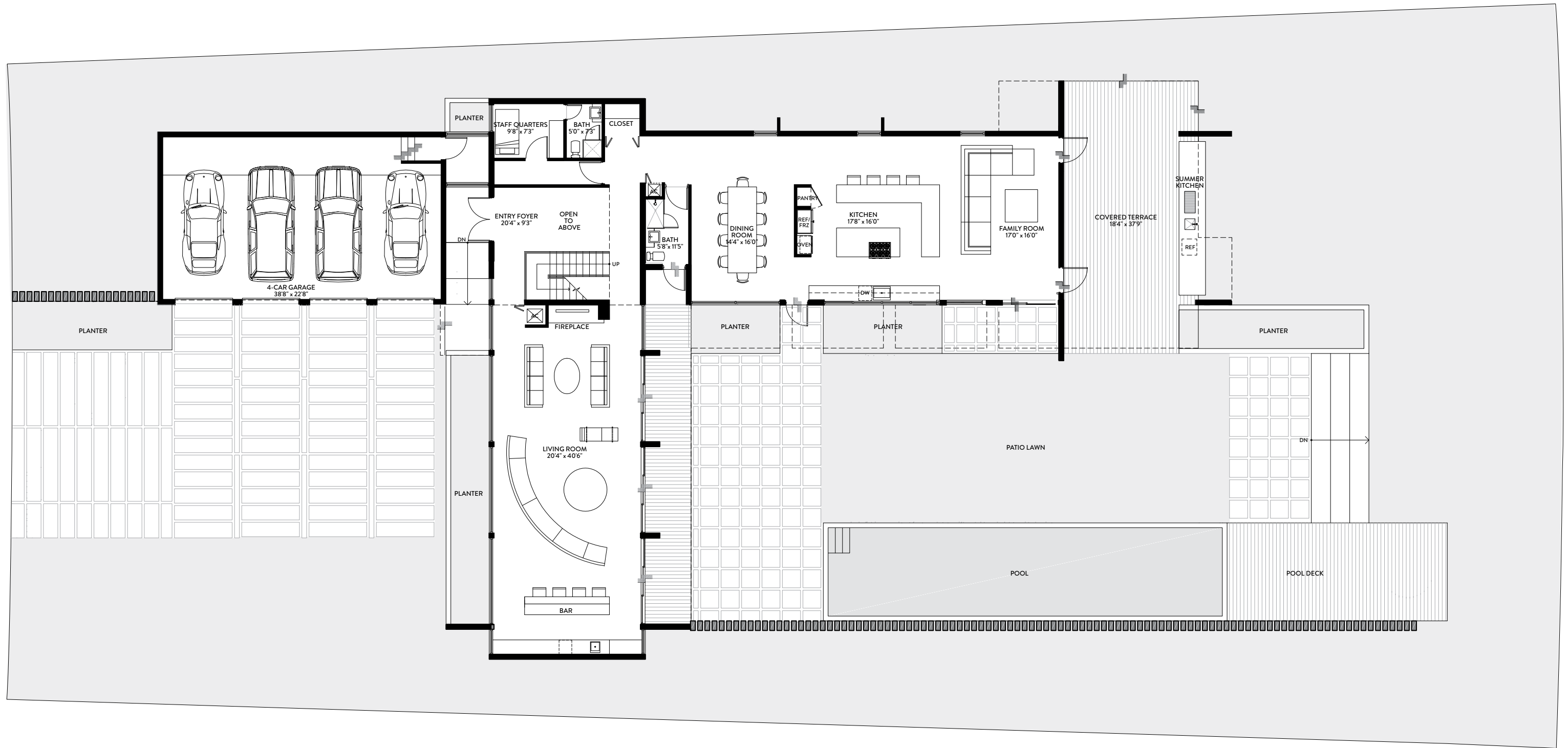
Stated dimensions are measured to the exterior boundaries of the exterior walls and the centerline of interior demising walls and in fact vary from the dimensions that would be determined by using the description and definition of the "Unit" set forth in the Declaration (which generally only includes the interior airspace between the perimeter walls and excludes interior structural components). Note that measurements of rooms set forth on this floor plan are generally taken at the greatest points of each given room (as if the room were a perfect rectangle), without regard for any cutouts. Accordingly, the area of the actual room will typically be smaller than the product obtained by multiplying the stated length times width. All dimensions are approximate and may vary with actual construction, and all floor plans and development plans are subject to change.



MATEU ARCHITECTURE
RESIDENCE / M1

BOTANIKO
WESTON

These drawings and depictions are conceptual only and are for the convenience of reference and including artists renderings. They should not be relied upon as representations, express or implied, of the final detail of the residences. The developer expressly reserves the right to make modifications, revisions, and changes it deems desirable in its sole and absolute discretion.



M1 | FIRST FLOOR
4 BEDROOMS / 6 BATHS / LOFT /
STAFF QUARTERS

FIRST FLOOR	SQ. FT.	SQ. M.
INTERIOR	3,108	289
EXTERIOR	4,832	449
TOTAL FIRST FLOOR	7,940	738

SECOND FLOOR	SQ. FT.	SQ. M.
INTERIOR	2,443	227
EXTERIOR	373	35
TOTAL SECOND FLOOR	2,816	262

TOTAL	SQ. FT.	SQ. M.
TOTAL INTERIOR	5,551	516
TOTAL EXTERIOR	5,205	484
TOTAL	10,756	1,000

BOTANIKO
 WESTON

Stated dimensions are measured to the exterior boundaries of the exterior walls and the centerline of interior demising walls and in fact vary from the dimensions that would be determined by using the description and definition of the "Unit" set forth in the Declaration (which generally only includes the interior airspace between the perimeter walls and excludes interior structural components). Note that measurements of rooms set forth on this floor plan are generally taken at the greatest points of each given room (as if the room were a perfect rectangle), without regard for any cutouts. Accordingly, the area of the actual room will typically be smaller than the product obtained by multiplying the stated length times width. All dimensions are approximate and may vary with actual construction, and all floor plans and development plans are subject to change.



MATEU ARCHITECTURE
RESIDENCE / M1

BOTANIKO
WESTON



M1 | SECOND FLOOR
4 BEDROOMS / 6 BATHS / LOFT /
STAFF QUARTERS

FIRST FLOOR	SQ. FT.	SQ. M.
INTERIOR	3,108	289
EXTERIOR	4,832	449
TOTAL FIRST FLOOR	7,940	738

SECOND FLOOR	SQ. FT.	SQ. M.
INTERIOR	2,443	227
EXTERIOR	373	35
TOTAL SECOND FLOOR	2,816	262

TOTAL	SQ. FT.	SQ. M.
TOTAL INTERIOR	5,551	516
TOTAL EXTERIOR	5,205	484
TOTAL	10,756	1,000

BOTANIKO
 WESTON

Stated dimensions are measured to the exterior boundaries of the exterior walls and the centerline of interior demising walls and in fact vary from the dimensions that would be determined by using the description and definition of the "Unit" set forth in the Declaration (which generally only includes the interior airspace between the perimeter walls and excludes interior structural components). Note that measurements of rooms set forth on this floor plan are generally taken at the greatest points of each given room (as if the room were a perfect rectangle), without regard for any cutouts. Accordingly, the area of the actual room will typically be smaller than the product obtained by multiplying the stated length times width. All dimensions are approximate and may vary with actual construction, and all floor plans and development plans are subject to change.



MATEU ARCHITECTURE
RESIDENCE / M2

BOTANIKO
WESTON

These drawings and depictions are conceptual only and are for the convenience of reference and including artists renderings. They should not be relied upon as representations, express or implied, of the final detail of the residences. The developer expressly reserves the right to make modifications, revisions, and changes it deems desirable in its sole and absolute discretion.



M2
5 BEDROOMS / 8 BATHS / OFFICE /
STAFF QUARTERS

TOTAL	SQ. FT.	SQ. M.
TOTAL INTERIOR	5,703	530
TOTAL EXTERIOR	4,487	417
TOTAL	10,190	947

BOTANIKO
 WESTON

Stated dimensions are measured to the exterior boundaries of the exterior walls and the centerline of interior demising walls and in fact vary from the dimensions that would be determined by using the description and definition of the "Unit" set forth in the Declaration (which generally only includes the interior airspace between the perimeter walls and excludes interior structural components). Note that measurements of rooms set forth on this floor plan are generally taken at the greatest points of each given room (as if the room were a perfect rectangle), without regard for any cutouts. Accordingly, the area of the actual room will typically be smaller than the product obtained by multiplying the stated length times width. All dimensions are approximate and may vary with actual construction, and all floor plans and development plans are subject to change.



MATEU ARCHITECTURE
RESIDENCE / M3

BOTANIKO
WESTON

These drawings and depictions are conceptual only and are for the convenience of reference and including artists renderings. They should not be relied upon as representations, express or implied, of the final detail of the residences. The developer expressly reserves the right to make modifications, revisions, and changes it deems desirable in its sole and absolute discretion.



M3 | FIRST FLOOR
4 BEDROOMS / 6.5 BATHS /
STAFF QUARTERS

FIRST FLOOR	SQ. FT.	SQ. M.
INTERIOR	3,069	285
EXTERIOR	3,909	363
TOTAL FIRST FLOOR	6,978	648

SECOND FLOOR	SQ. FT.	SQ. M.
INTERIOR	2,296	213
EXTERIOR	289	27
TOTAL SECOND FLOOR	2,585	240

TOTAL	SQ. FT.	SQ. M.
TOTAL INTERIOR	5,365	498
TOTAL EXTERIOR	4,198	390
TOTAL	9,563	888

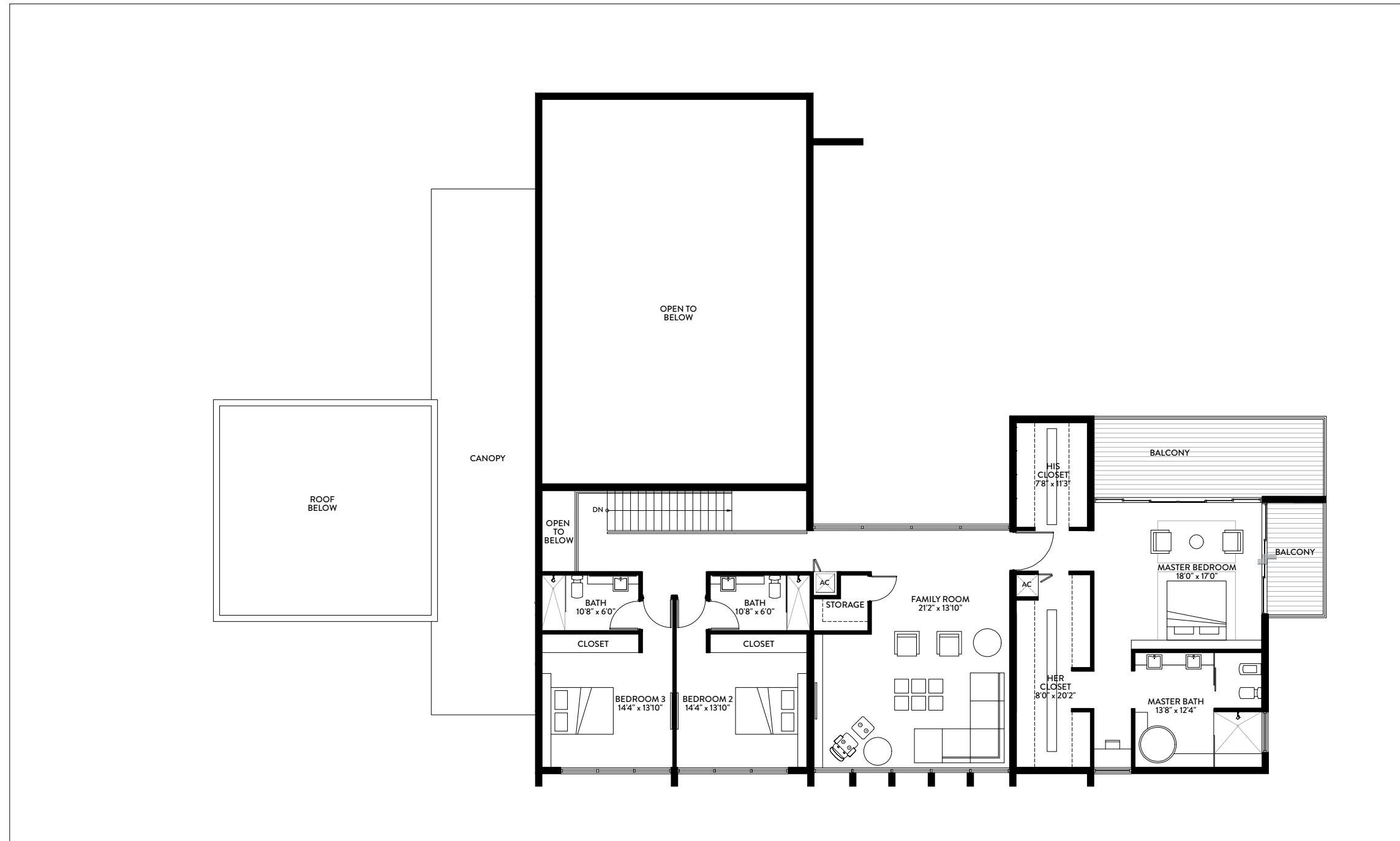
BOTANIKO
 WESTON

Stated dimensions are measured to the exterior boundaries of the exterior walls and the centerline of interior demising walls and in fact vary from the dimensions that would be determined by using the description and definition of the "Unit" set forth in the Declaration (which generally only includes the interior airspace between the perimeter walls and excludes interior structural components). Note that measurements of rooms set forth on this floor plan are generally taken at the greatest points of each given room (as if the room were a perfect rectangle), without regard for any cutouts. Accordingly, the area of the actual room will typically be smaller than the product obtained by multiplying the stated length times width. All dimensions are approximate and may vary with actual construction, and all floor plans and development plans are subject to change.



MATEU ARCHITECTURE
RESIDENCE / M3

BOTANIKO
WESTON



M3 | SECOND FLOOR
4 BEDROOMS / 6.5 BATHS /
STAFF QUARTERS

FIRST FLOOR	SQ. FT.	SQ. M.
INTERIOR	3,069	285
EXTERIOR	3,909	363
TOTAL FIRST FLOOR	6,978	648

SECOND FLOOR	SQ. FT.	SQ. M.
INTERIOR	2,296	213
EXTERIOR	289	27
TOTAL SECOND FLOOR	2,585	240

TOTAL	SQ. FT.	SQ. M.
TOTAL INTERIOR	5,365	498
TOTAL EXTERIOR	4,198	390
TOTAL	9,563	888

BOTANIKO
 WESTON

Stated dimensions are measured to the exterior boundaries of the exterior walls and the centerline of interior demising walls and in fact vary from the dimensions that would be determined by using the description and definition of the "Unit" set forth in the Declaration (which generally only includes the interior airspace between the perimeter walls and excludes interior structural components). Note that measurements of rooms set forth on this floor plan are generally taken at the greatest points of each given room (as if the room were a perfect rectangle), without regard for any cutouts. Accordingly, the area of the actual room will typically be smaller than the product obtained by multiplying the stated length times width. All dimensions are approximate and may vary with actual construction, and all floor plans and development plans are subject to change.



MATEU ARCHITECTURE
RESIDENCE / M4

BOTANIKO
WESTON



M4
4 BEDROOMS / 6.5 BATHS /
STAFF QUARTERS

TOTAL	SQ. FT.	SQ. M.
TOTAL INTERIOR	4,225	393
TOTAL EXTERIOR	3,598	334
TOTAL	7,823	727

BOTANIKO
 WESTON

Stated dimensions are measured to the exterior boundaries of the exterior walls and the centerline of interior demising walls and in fact vary from the dimensions that would be determined by using the description and definition of the "Unit" set forth in the Declaration (which generally only includes the interior airspace between the perimeter walls and excludes interior structural components). Note that measurements of rooms set forth on this floor plan are generally taken at the greatest points of each given room (as if the room were a perfect rectangle), without regard for any cutouts. Accordingly, the area of the actual room will typically be smaller than the product obtained by multiplying the stated length times width. All dimensions are approximate and may vary with actual construction, and all floor plans and development plans are subject to change.

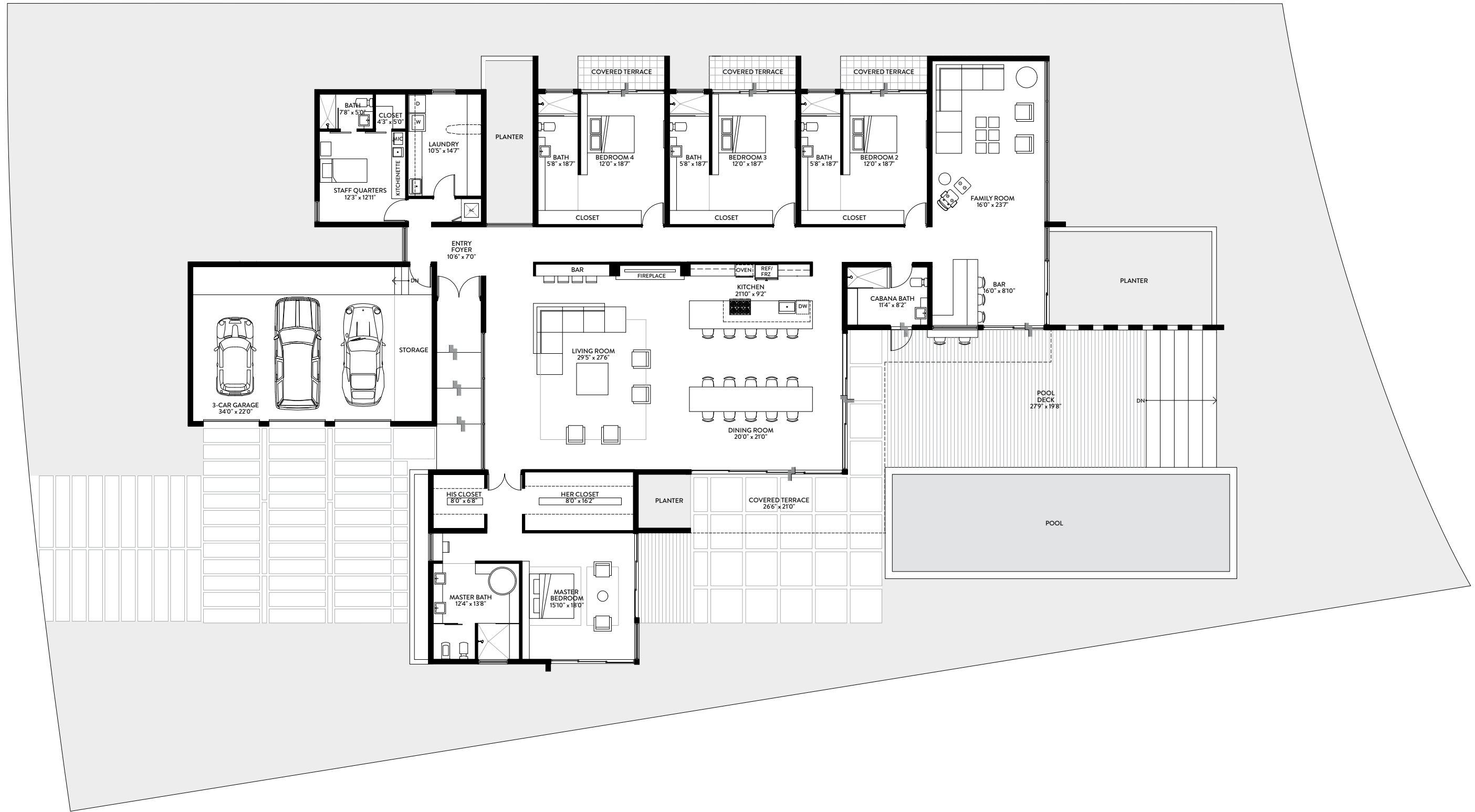


ARTIST'S CONCEPTUAL RENDERING

MATEU ARCHITECTURE
RESIDENCE / M5

BOTANIKO
WESTON

These drawings and depictions are conceptual only and are for the convenience of reference and including artists renderings. They should not be relied upon as representations, express or implied, of the final detail of the residences. The developer expressly reserves the right to make modifications, revisions, and changes it deems desirable in its sole and absolute discretion.



M5
4 BEDROOMS / 6 BATHS /
STAFF QUARTERS

	TOTAL	SQ. FT.	SQ. M.
TOTAL INTERIOR		5,307	493
TOTAL EXTERIOR		3,361	312
TOTAL		8,668	805

BOTANIKO
 WESTON

Stated dimensions are measured to the exterior boundaries of the exterior walls and the centerline of interior demising walls and in fact vary from the dimensions that would be determined by using the description and definition of the "Unit" set forth in the Declaration (which generally only includes the interior airspace between the perimeter walls and excludes interior structural components). Note that measurements of rooms set forth on this floor plan are generally taken at the greatest points of each given room (as if the room were a perfect rectangle), without regard for any cutouts. Accordingly, the area of the actual room will typically be smaller than the product obtained by multiplying the stated length times width. All dimensions are approximate and may vary with actual construction, and all floor plans and development plans are subject to change.