

FENDI



CHÂTEAU

RESIDENCES

INTRODUCING THE MOST STYLISH
COLLABORATION TO COME TO MIAMI BEACH IN DECADES.

FENDI  CHÂTEAU
RESIDENCES

COLLABORATION

LOCATION

THE BUILDING

THE LOBBY

THE WATER

THE RESIDENCES



FENDI.COM

FENDI

A LUXURIOUS COLLABORATION FENDI + CHÂTEAU GROUP

WAVES OF ELEGANCE COME TO MIAMI BEACH WITH FENDI CHÂTEAU, THE VERY FIRST RESIDENTIAL COLLABORATION BETWEEN RENOWNED LUXURY HOUSE FENDI AND REFINED PRIVATE DEVELOPER CHÂTEAU GROUP. LOCATED RIGHT ON THE OCEAN, JUST STEPS FROM THE BAL HARBOUR SHOPS, FENDI CHÂTEAU MARKS FENDI'S FIRST BRANDED PROJECT IN THE US REAL ESTATE MARKET. CHARACTERIZED BY INNOVATIVE UNDULATED ARCHITECTURE BY ARQUITECTONICA THAT ECHOES THE WAVES OUTSIDE ITS WINDOWS, FENDI CHÂTEAU'S EXPANSIVE WATERFRONT APARTMENTS AND PENTHOUSES BOAST BREATHTAKING VIEWS OF THE ATLANTIC OCEAN, DELUXE AMENITIES AND INTERIORS IN A PERFECT MINGLING OF FUNCTION AND STYLE. THIS STUNNING BUILDING OFFERS A UNIQUE, EXCITING AND GLOBAL LIFESTYLE EXPERIENCE THAT BEGINS THE SECOND RESIDENTS STEP THROUGH THE DOORS.



AS DEVELOPERS, WE HAVE ALWAYS CREATED DISTINCT RESIDENTIAL BUILDINGS WITH THE HIGHEST LEVEL OF ARCHITECTURAL DESIGN AND A REFINED FUNCTIONALITY. WITH FENDI CHÂTEAU, WE WANT TO CREATE A NEW PARADIGM FOR OCEANFRONT LUXURY LIVING – A BUILDING WITH AN UNPARALLELED DEGREE OF ELEGANCE AND EXTRAORDINARY AMENITIES THAT IS TRULY EXPRESSIVE OF ITS PRIVILEGED LOCATION. BETWEEN THE LIMITLESS BEAUTY OF THE OCEAN, THE MAGNIFICENT VARIETY OF EXOTIC GARDEN SPECIES AND THE SOPHISTICATED DESIGN, WE HAVE ACHIEVED AN ATMOSPHERE THAT SEAMLESSLY TRANSPORTS YOU TO A STATE OF HARMONY AND TRANQUILITY. WE INVITE YOU TO BE A PART OF THIS THOUGHTFULLY DESIGNED NEW WAVE OF CONTEMPORARY ELEGANCE, AND TO SHARE OUR VISION FOR A BUILDING THAT TRULY DREAMS HIGHER THAN THE SKY WITH THE DEPTH OF THE OCEAN.



**MANUEL
GROSSKOPF**

HEAD OF US OPERATIONS
OF CHATEAU GROUP

FENDI

THE HOUSE OF FENDI WAS ESTABLISHED BY ADELE AND EDOARDO FENDI IN ROME IN 1925 WITH THE OPENING OF THE FIRST FENDI BOUTIQUE, A HANDBAG SHOP AND FUR WORKSHOP. SOON WINNING INTERNATIONAL ACCLAIM, FENDI EMERGED AS A BRAND RENOWNED FOR ITS ELEGANCE, CRAFTSMANSHIP, INNOVATION AND STYLE. IN 1965, THE BRAND'S COLLABORATION WITH KARL LAGERFELD BEGAN, AND STILL CONTINUES TODAY. IN 1992, SILVIA VENTURINI FENDI WAS APPOINTED FENDI'S ACCESSORIES CREATIVE DIRECTOR, AND IN 2000 THE LVMH GROUP ACQUIRED FENDI, BECOMING ITS MAJORITY SHAREHOLDER. IN FEBRUARY 2012, PIETRO BECCARI WAS APPOINTED AS CHAIRMAN AND CEO OF FENDI, AND SINCE THEN HE HAS BEEN REPOSITIONING THE MAISON TO BE AT THE HEARTH OF ITALIAN CULTURE AND HERITAGE AND OF THE LUXURY WORLD.



**PIETRO
BECCARI**

CHAIRMAN & CHIEF
EXECUTIVE OFFICER, FENDI

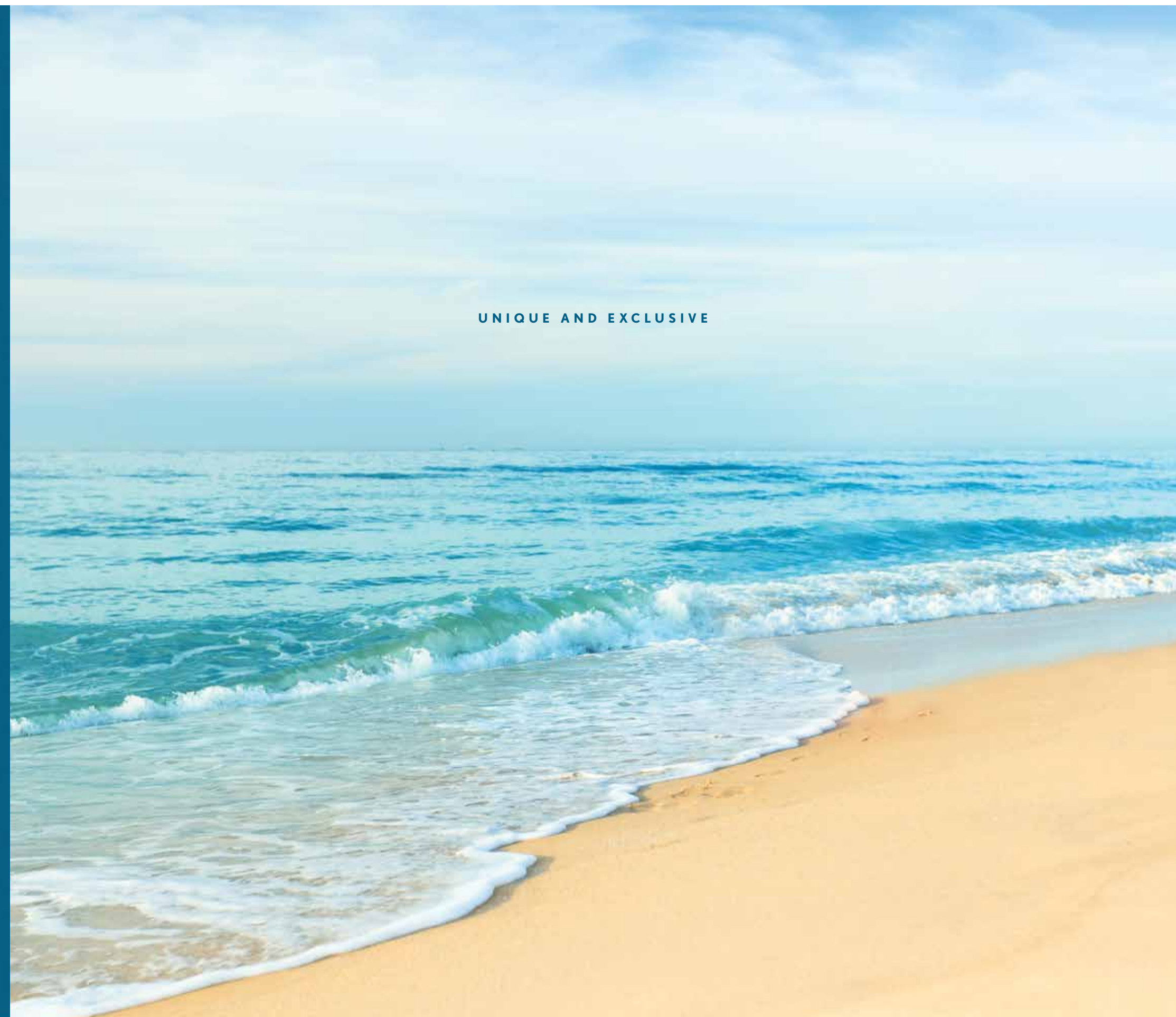
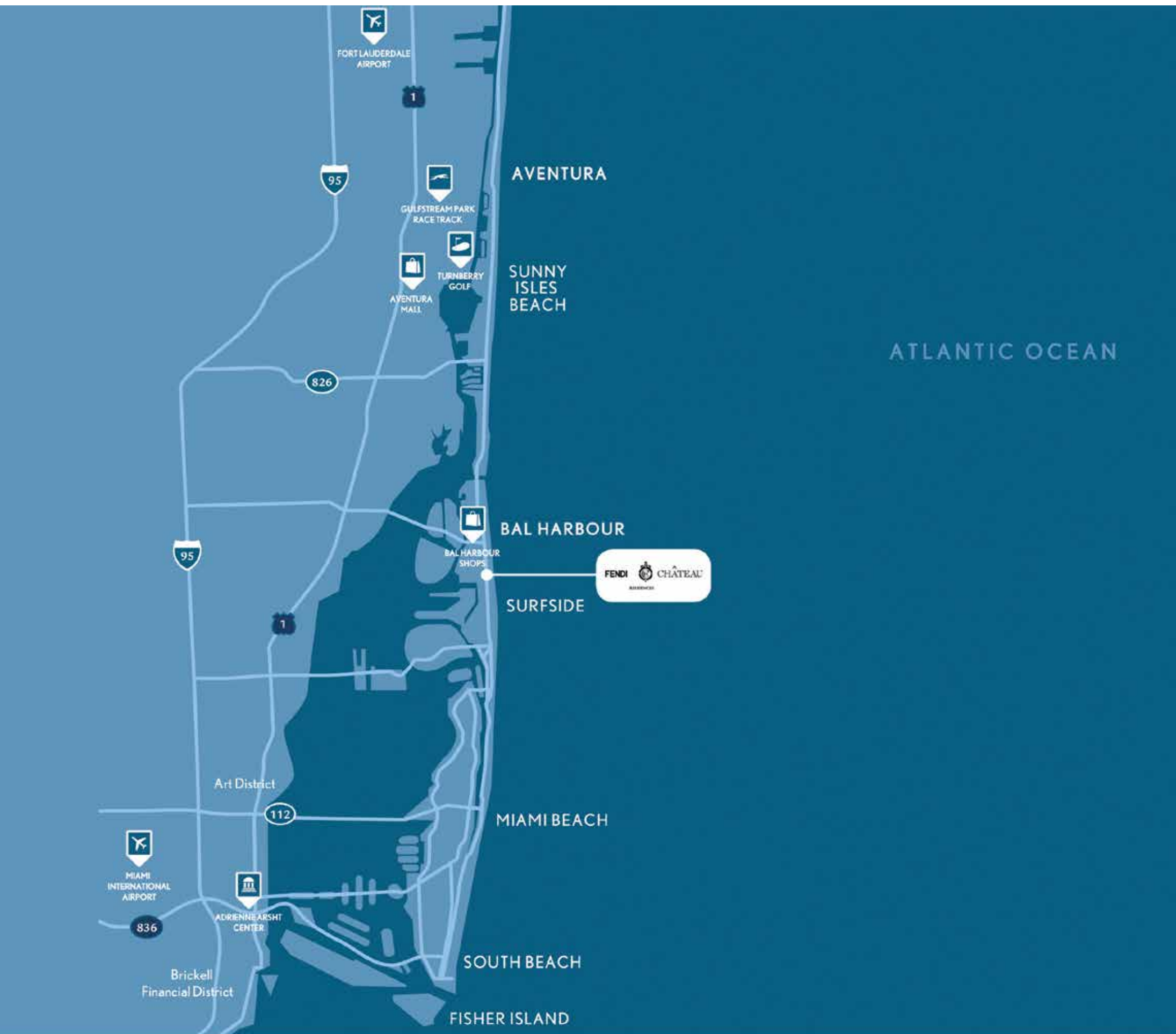


BAL HARBOUR SHOPS

AN ENVIABLE LOCATION 9380 COLLINS AVENUE

FENDI CHATEAU ENJOYS A COVETED LOCATION ON THE MIAMI BEACH WATERFRONT, JUST THREE BLOCKS SOUTH OF THE EXCLUSIVE BAL HARBOUR SHOPS. FENDI CHATEAU OFFERS RESIDENTS THE OPPORTUNITY TO INDULGE IN ALL THAT IS VIBRANT ABOUT MIAMI - INCLUDING ITS AVANT-GARDE ART AND DESIGN CULTURE AND INTERNATIONAL CLIENTELE - WHILE ENJOYING 300 LINEAR FEET OF UNADULTERATED BEACHFRONT. LUSH GARDENS AND SERENE REFLECTING POOLS MAKE THIS AN IDYLIC SANCTUARY FOR THOSE SEEKING A WHOLE NEW KIND OF REFUGE.

ARTIST RENDERING



UNIQUE AND EXCLUSIVE





WAVES OF LUXURY ARCHITECTURE BY ARQUITECTONICA

WITH A FAÇADE THAT IS A REFLECTION OF THE UNDULATING OCEAN WAVES THAT IT OVERLOOKS, FENDI CHÂTEAU IS A STRIKING ADDITION TO THE ENVIABLE STRETCH OF BEACH JUST SOUTH OF BAL HARBOUR. INTERNATIONAL ARCHITECTURE FIRM ARQUITECTONICA HAS ENVISIONED A 12-STORY BUILDING THAT GROWS ORGANICALLY OUT OF ITS NATURAL SURROUNDINGS, AND WHOSE 58 FLOOR-THROUGH RESIDENCES DELIVER EXTRAORDINARY, UNOBSTRUCTED ATLANTIC OCEAN VIEWS. ALL THIS IS PERFECTLY COMPLEMENTED BY CHIC INTERIORS AND AMENITIES SPACES CURATED BY FENDI, IN THE SAME AESTHETIC THAT HAS MADE THEM SOUGHT-AFTER BY THE WORLD'S MOST STYLISH WOMEN AND MEN.



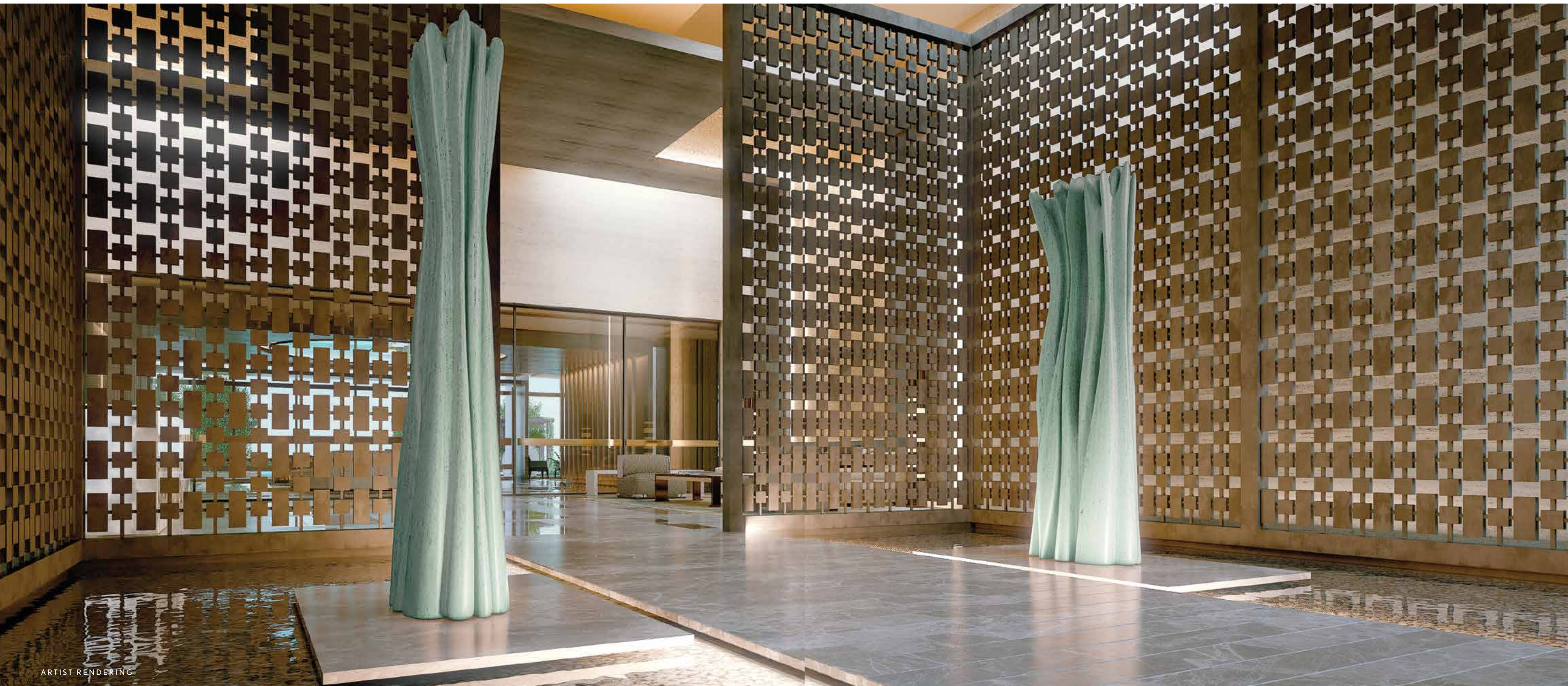
ARTIST RENDERING



ARTIST RENDERING

AN IMMERSIVE EXPERIENCE THE FENDI CHÂTEAU LOBBY

OVER THE COURSE OF FENDI'S 89-YEAR-HISTORY, THE LUXURY HOUSE HAS BEEN DEFINED BY ITS ABILITY TO COMBINE A VARIETY OF PRECIOUS MATERIALS - FROM LEATHER TO FUR TO CRYSTAL TO SILK - TO YIELD ONE EXTRAORDINARY WHOLE. AND FROM THE SECOND ONE WALKS INTO THE DRAMATIC FENDI CHÂTEAU LOBBY, A SPACE DEFINED BY 20-FOOT CEILINGS, THEY WILL BE IMMERSSED IN THE ULTIMATE FENDI EXPERIENCE. TAKING CUES FROM THE EXTRAORDINARY FENDI COLLECTIONS, INTERIOR DESIGNER FANNY HAIM HAS HANDPICKED THE VERY BEST FENDI CASA FURNISHINGS - FROM THE WALLS TO THE COUCHES, THE RUGS TO THE LIGHT FIXTURES - FOR THIS LOBBY, GIVING RESIDENTS A TASTE OF THE DESIGN AESTHETIC THAT WILL PERMEATE EVERY INCH OF THIS BREATHTAKING BUILDING. SOFAS, ARMCHAIRS AND EACH ACCESSORY ARE THE EXPRESSION OF THE MAGNIFICENT WORK THAT FENDI CASA PROPOSES, CREATING A REFINED STYLE AND A GLAMOROUS ART DE VIVRE.



ARTIST RENDERING



ARTIST RENDERING



ARTIST RENDERING





ARTISANAL RENDERING



ARTIST RENDERING





ARTIST RENDERING



ARTIST RENDERING





ARTIST RENDERING

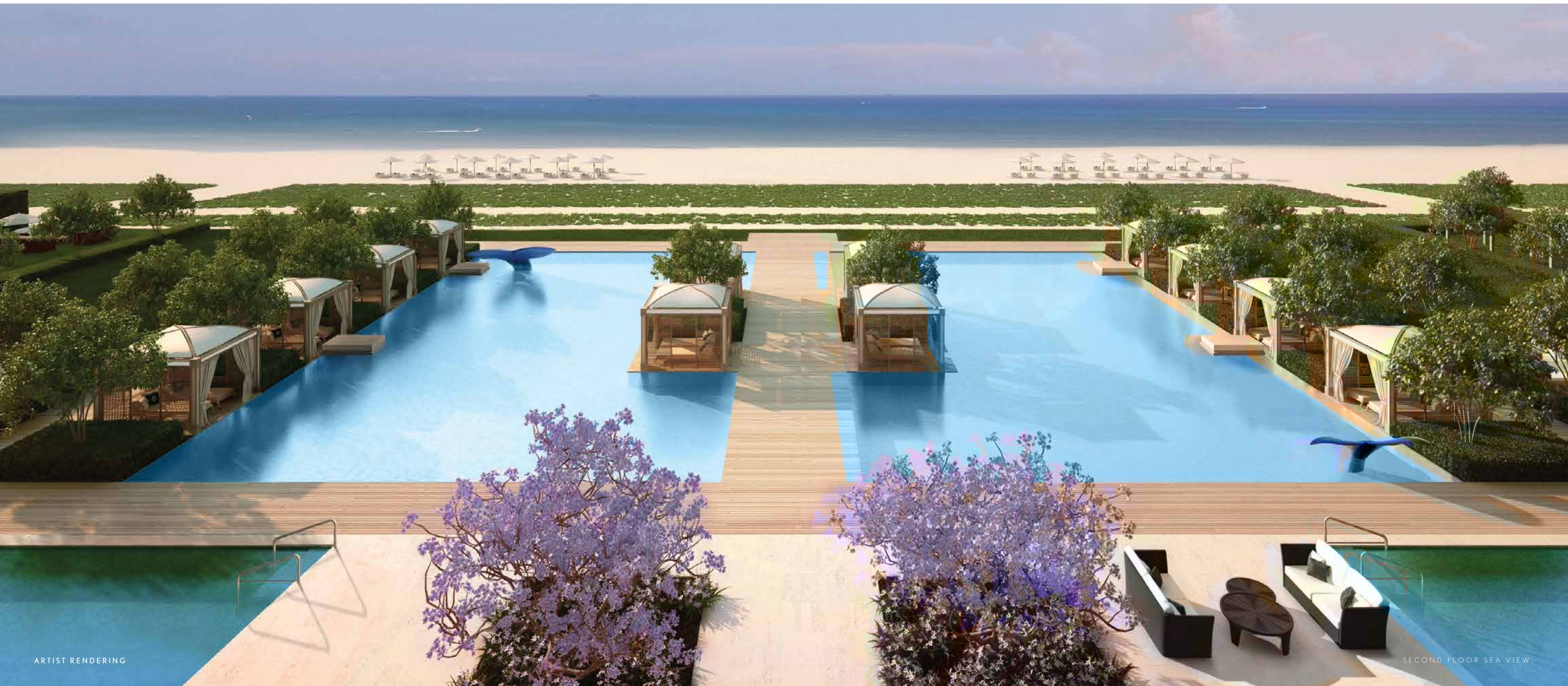


SAND, SKY & WATER THE ELEMENTS AT FENDI CHÂTEAU

FENDI CHÂTEAU'S ORGANIC, UNDULATING FAÇADE FITS IN PERFECTLY WITH ITS NATURAL SURROUNDINGS. PERCHED ON A SERENE STRETCH OF BEACHFRONT, THE PROPERTY BOASTS TWO SWIMMING POOLS, TWO POND-LIKE REFLECTIVE POOLS AND AN OUTDOOR JACUZZI. LUSHLY LANDSCAPED GARDENS UNIFY THESE WATER ELEMENTS WITH PRACTICAL OUTDOOR ELEMENTS, INCLUDING POOLSIDE CABANAS AND A GAZEBO WITH A FULLY EQUIPPED SUMMER KITCHEN. HERE, RESIDENTS CAN BE ONE WITH NATURE WHILE AT THE SAME TIME HAVING COUNTLESS OPPORTUNITIES FOR SOCIALIZATION.

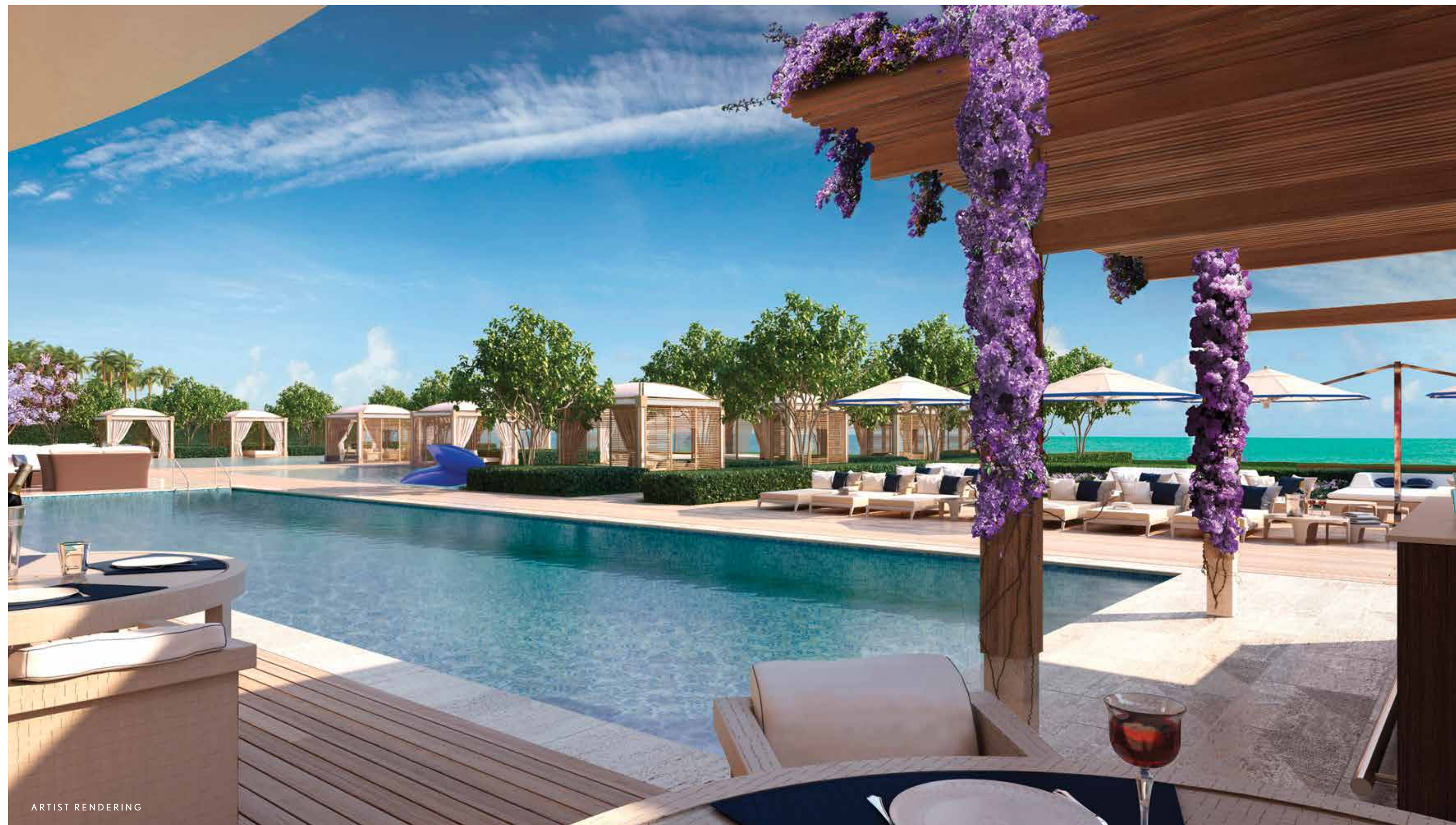


ARTIST RENDERING



ARTIST RENDERING

SECOND FLOOR SEA VIEW



ARTIST RENDERING



THE RESIDENCES WHERE FASHION MEETS FUNCTION

THE DESIGN SENSIBILITY THAT HAS MADE FENDI A SOUGHT-AFTER BRAND FOR NEARLY A CENTURY IS EVIDENT IN FENDI CHÂTEAU'S INCREDIBLE RESIDENCES. DEFINED BY AN UNWAVERING PASSION FOR CREATIVITY AND HIGH QUALITY, THESE HOMES COMBINE FUNCTION AND FASHION ON A GRAND SCALE. COMMON AREAS AND KITCHENS WILL BE EXQUISITELY DECORATED WITH FENDI CASA FIXTURES AND FITTINGS, REVEALING BESPOKE DESIGNS AND DISTINCTIVE MATERIALS SUCH AS STREAKED WOODS, SMOKY GLASS AND BRONZED REFLECTIONS THAT SEAMLESSLY REFLECT FENDI'S MOST ICONIC AND HIGHEST STANDARDS. SLIDING DOORS ALLOW RESIDENTS TO WALK OUT ONTO GLASS-RAILED TERRACES AND TAKE IN UNRIVALED OCEAN VIEWS. AN INNOVATIVE AND CONTEMPORARY FURNISHING IDEA THAT FOLLOW THE COMMON THREAD OF A LIFESTYLE WHICH EXPRESS ELEGANCE AND STYLE WITH EQUILIBRIUM, TYPICAL OF FENDI CASA.



ARTIST RENDERING



ARTIST RENDERING





ARTIST RENDERING





FENDI, ROME



FENDI, LONDON





FENDI CHATEAU ATTACHÉ IS A KEY PLAYER IN THE FENDI CHATEAU EXPERIENCE. FROM THE MOMENT EACH GUEST OR RESIDENT ARRIVES, HIS OR HER LIFESTYLE DETAILS ARE MANAGED BASED ON PERSONAL NEEDS AND PREFERENCES, DOWN TO THE VERY LAST DETAIL. WHETHER IT'S ARRANGING FOR EXCLUSIVE SHOPPING EXPERIENCES AND SIGHTSEEING ADVENTURES, SECURING COVETED RESTAURANT RESERVATIONS AND VIP EVENT ACCESS, OR PLANNING PRIVATE GATHERINGS WITHIN THE PROPERTY'S UNIQUE SPACES, THE FENDI CHATEAU ATTACHÉ PROGRAM IS AN UNPARALLELED LIFESTYLE ASSET.

DINING & NIGHTLIFE

- PERSONALIZED DINING RECOMMENDATIONS AND COVETED RESERVATIONS AT NEW AND NOTABLE RESTAURANTS
- EXCLUSIVE ACCESS TO SOUGHT-AFTER NIGHTCLUBS, BARS, AND LOUNGES
- GROUP DINNERS AND PRIVATE DINING OPTIONS FOR ANY OCCASION OR PARTY SIZE

ENTERTAINMENT & CULTURE

- PREMIUM TICKETS TO SHOWS, SPORTING EVENTS, AND CONCERTS
- ACCESS TO FASHION SHOWS, AWARD CEREMONIES, AND MOVIE PREMIERES AS WELL AS GALLERY OPENINGS AND PHILANTHROPIC GALAS

ENTERTAINMENT & CULTURE

- CUSTOMIZED TRAVEL ITINERARIES AND GUIDES TO TOP DESTINATIONS CURATED BY SPECIALIZED INDUSTRY CONNOISSEURS
- PRIVATE AND COMMERCIAL AIR AND GROUND TRANSPORTATION
- TRAVEL AND HOTEL ACCOMMODATIONS WITH PERKS AND COMPLIMENTARY UPGRADES

EVENT PLANNING

- ARRANGEMENT OF MEMORABLE BUSINESS AND PERSONAL EVENTS, FROM INTIMATE GATHERINGS TO LARGE-SCALE CORPORATE FUNCTIONS
- COMPREHENSIVE START-TO-FINISH SERVICES INCLUDING PLANNING, BUDGETING, SITE TOURS, INVITATION DESIGN, VENDOR CURATION, PRODUCTION, AND STAFFING

GIFTING

- PERSONALIZED GIFT RECOMMENDATIONS
- ACCESS TO RARE AND COVETED GIFT ITEMS
- PERSONAL SHOPPING EXPERTS IN MAJOR CITIES ACROSS THE GLOBE

LIFESTYLE & HOME

- WHITE GLOVE MOVE-IN COORDINATION
- ACCESS TO TRUSTED CHILD AND PET CARE SERVICES
- WORLD-CLASS HOUSEKEEPING SERVICE BOOKINGS
- UNIQUE AND PERSONALIZED FLOWER DESIGN AND DELIVERY

DEVELOPED BY CHÂTEAU GROUP

CHÂTEAU GROUP IS A LEADING REAL ESTATE DEVELOPMENT COMPANY WITH OVER 35 YEARS OF EXPERIENCE IN RESIDENTIAL, COMMERCIAL, AND MIXED-USE PROJECTS IN THE UNITED STATES AND SOUTH AMERICA IN ITS PORTFOLIO.

CHÂTEAU GROUP HAS DEEP EXPERIENCE IN SOUTHERN FLORIDA'S MOST PRESTIGIOUS COMMUNITIES. ITS PROPERTIES THERE INCLUDE: 900 BISCAYNE BAY RESIDENCES (BUILT AND SOLD OUT) FENDI CHÂTEAU RESIDENCES IN SURFSIDE AND FREEDOM SQUARE AND FREEDOM TOWER IN MIAMI; HALLANDALE SQUARE IN HALLANDALE BEACH; AND PUERTO AVENTURA RESIDENCES IN AVENTURA (UNDER DEVELOPMENT).



ARQUITECTONICA

SALES & MARKETING VENEGAS INTERNATIONAL GROUP



FENDI CHÂTEAU SALES GALLERY

9380 COLLINS AVENUE, SURFSIDE, FL 33154

PHONE: 305-944-4440

FENDICHATEAURESIDENCES.COM

Oral representations cannot be relied upon as correctly stating the representations of the developer. For correct representations, make reference to this advertisement and to the documents required by section 718.503, Florida statutes, to be furnished by a developer to a buyer or lessee. The sketches, renderings, graphic materials, plans, specifications, terms, conditions and statements contained in this advertisement are proposed only, and the Developer reserves the right to modify, revise or withdraw any or all of same in its sole discretion and without prior notice. All improvements, designs and construction are subject to first obtaining the appropriate federal, state and local permits and approvals for same. This is not an offer to sell, or solicitation of offers to buy, the condominium units in states where such offer or solicitation cannot be made. Images and renderings are all artist conceptual compositions. Created by the seventh art.

FENDICHATEAURESIDENCES.COM