



ST REGIS

BAL HARBOUR

THE RESIDENCES

THE BESPOKE COLLECTION

A SPECIAL OFFERING OF PREMIER RESIDENCES ON THE OCEAN IN BAL HARBOUR

THE BESPOKE COLLECTION

Custom-Tailored to meet your needs.

PAST



Bespoke. Derived from *bespeak*, the term originated in the United Kingdom and is used worldwide to depict an individually or custom-made product or service ...

hand-made and made-to-order with personalized perfection of utmost importance.

When John Jacob Astor IV founded The St. Regis New York in the first decade of the 20th century, he established the standard for opulence and service. Astor spared no expense in the fine furnishings ... and grand décor was just the beginning.



John Jacob Astor IV

His hoteliers offered a consummate experience custom-tailored to the desires and wishes of the guest. Thus was born the St. Regis heritage and core value of “bespoke service”—meaning, an unparalleled commitment to refining service to the finest, anticipatory detail.

PRESENT

Bespoke service is also the inspiration behind The Bespoke Collection at The Residences at The St. Regis Bal Harbour Resort. Here, in a limited offering of Premier Residences on the upper floors of the North and South Tower, the developers have used intuitive design to create luxury Residences that surpass the needs and expectations of future Residents.

Through extensive research, developers found that prospective owners desired more space than what was offered in the marketplace. Space for living ... space to accommodate larger extended families ... space for staff.

With this in mind, the developers designed airy Residences with expansive rooms. Residences feature grand salons of more than 1,100 square feet (102.2 square meters); great master suites and master baths; libraries, theaters and butler pantries; oversized living and dining areas; and, of course, to showcase the prime

seaside setting of Bal Harbour, large terraces (some of more than 2,000 square feet or 185.8 square meters) and through-building designs offering sweeping views of sunrises in the morning and sunsets in the evening.

The Bespoke Collection features four unique Residence designs that range in size from 3,200 to 6,848 square feet (297.3 to 636.2 square meters) of air-conditioned living space. The largest offering, The Excelsior, has a grand salon measuring 48’ x 22’ with abundant floor-to-ceiling window space, a master suite which measures 29’ x 22,’ four bedrooms, separate his and hers wardrobes, a fifth bedroom for staff, a library/theater, butler pantry and more.

All Residences feature:

- ◆ Private elevator lobbies
- ◆ Imported Italian kitchen and bath cabinetry by Snaidero®
- ◆ Sub-Zero, Wolf and Miele appliances
- ◆ Dornbracht and Kohler fixtures
- ◆ Large walk-in closets and storage areas

Closet and storage space reign supreme, allowing Residents to fully enjoy their perfect proximity to the world-renowned shopping center, The Bal Harbour Shops, located just across Collins Avenue and offering 100 luxury boutiques and stores. In The Bespoke Collection, it’s common to have four and five separate walk-in closets in each Residence, some as large as 11’ x 22,’ surely qualifying as a “room” in most places.

Finally, in the tradition of Mr. Astor and his exquisite taste of the “Gilded Age,” The Bespoke Collection epitomizes exquisite design and gracious appointments. In whatever area you look, the finest feature that could be included, is included.



FUTURE

All Residences within The St. Regis Bal Harbour Resort deliver a legendary experience for connoisseurs of life.

Yet The Bespoke Collection elevates even the most exquisite. Truly a fortunate few families will savor this lifestyle forever.



December 2010, construction progress photo of the South and North Towers at The St. Regis Bal Harbour Resort.



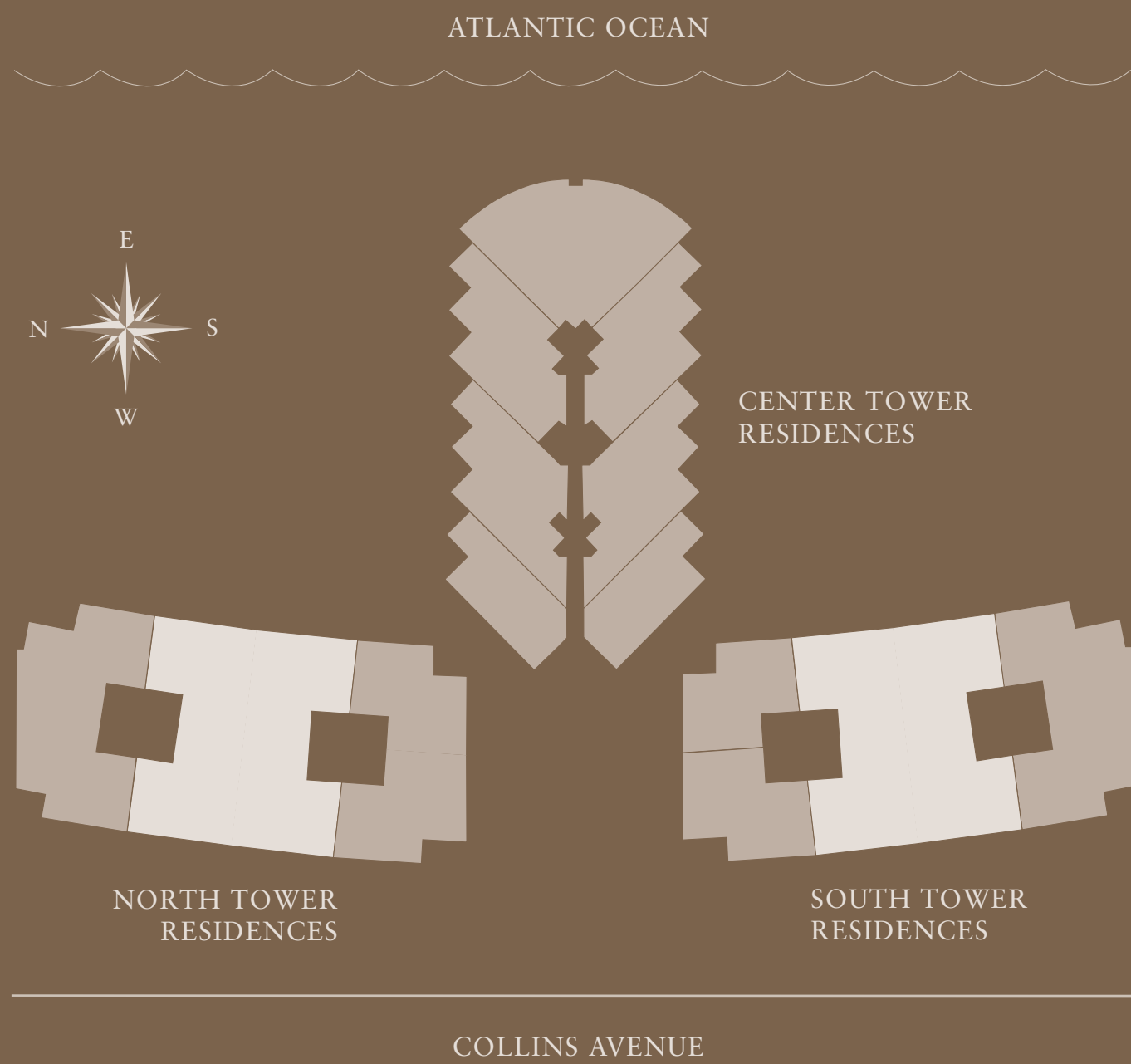
Northeast view from The St. Regis Bal Harbour Resort.

EXCELSIOR

5 BEDROOMS ♦ 5½ BATHS
FAMILY ROOM PLUS MEDIA ROOM

EXCELSIOR

5 BEDROOMS ♦ 5 1/2 BATHS
FAMILY ROOM PLUS MEDIA ROOM



RESIDENCE	TOTAL SQ FT	TOTAL SQ M
BALCONY	6,848	636.2
TOTAL	2,142	199.0
	8,990	831.2
PAINT TO PAINT RESIDENCE	6,305	586.0

EXTERIOR

- ◆ Expansive private balconies featuring bronze glass railings, large outdoor living areas and breathtaking views
- ◆ Floor-to-ceiling bronze-tinted, impact-resistant glass windows and sliding exterior doors with energy-efficient panes that meet stringent South Florida building codes

INTERIOR

- ◆ Audio-Video, Surround Sound, and Drapery Keypad/Motor Pre-wire
- ◆ Intelligent climate controls with digital thermostats
- ◆ Decora designer series electrical outlets and switches
- ◆ Recessed down lighting in corridors and bathrooms
- ◆ White smooth finish 9'-10" ceilings except for drops required to accommodate mechanical equipment
- ◆ Prime-coat Finished Walls

KITCHEN

- ◆ Imported Italian Snaidero "Venus" cabinetry designed by Pininfarina featuring high-gloss lacquer or wood-finished doors and drawer fronts with integrated LED lighting system
- ◆ Pininfarina designed center island with Stainless Steel countertop
- ◆ Butler's Pantry with Sub-Zero ice maker and Miele dishwasher
- ◆ Sub-Zero integrated refrigerator/freezer with independent temperature zones
- ◆ Sub-Zero wine storage system with dual zones and double refrigerator drawers
- ◆ Wolf 30" gas cook-top with four burners and 15" gas cook-top with two burners

- ◆ Miele "Speed" oven with convection and microwave capabilities
- ◆ Professional, stainless steel ventilation hood with built-in exhaust system and integrated lighting
- ◆ Wolf E Series 30-inch double ovens in classic stainless steel finish with touch control panel and LCD display
- ◆ Dual Miele 27-inch warming drawers with cabinet-integrated fronts
- ◆ Dual Miele dishwashers
- ◆ Miele built-in, stainless steel coffee system and Miele Cup Warmer
- ◆ InSinkErator garbage disposal
- ◆ Stainless steel countertops and full-height backsplashes
- ◆ Undercounter LED lighting system

MASTER SUITE

- ◆ Imported Italian "Snaidero Living" wall-mounted vanities with exotic ebony wood-veneer finish and Bianco Ceramicato countertops
- ◆ Imported select Statuary White Marble flooring throughout Master Bath, wet areas and select walls
- ◆ Midnight bar with Sub-Zero cooling drawer/freezer drawer, coffee maker, Miele dishwasher and bar sink
- ◆ Frameless glass shower enclosure
- ◆ Showers featuring wall-mounted shower head, large rain head, body sprays and hand-held shower wand
- ◆ Kohler infinity-style, overflow, deep-soaking air-jet tub
- ◆ Dornbracht chrome-finished, single lever faucets and under-mounted white lavatories
- ◆ Kohler "San Rafael" one-piece toilets

- ◆ Kohler bidet and Gentleman's urinal
- ◆ Kohler chrome-finished bath accessories including towel bars and toilet tissue dispenser

GUEST BEDROOM(S) & BATH(S)

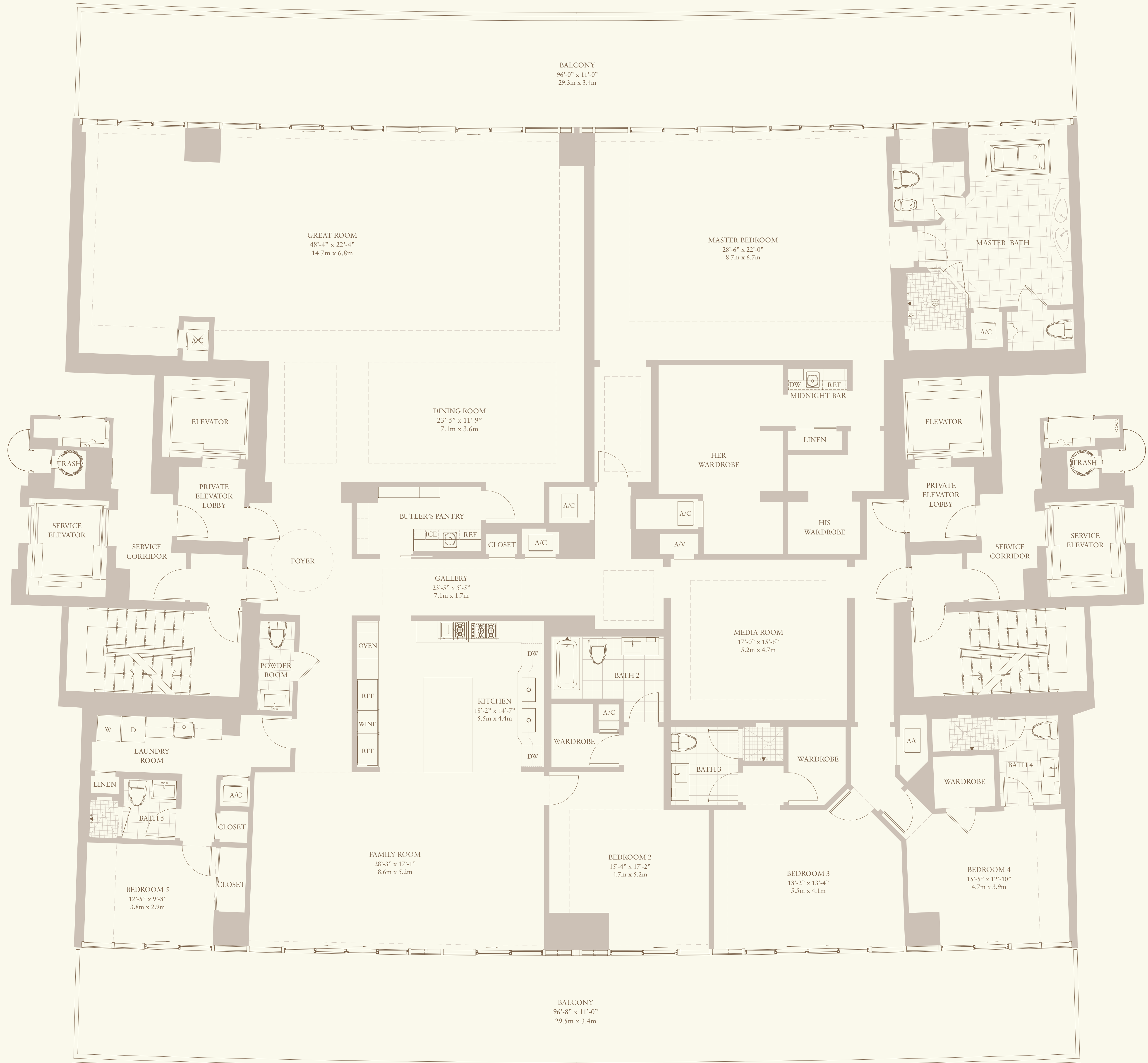
- ◆ Imported Italian "Snaidero Living" wall-mounted vanities in ebony with ebony countertops and vessel bowl sinks
- ◆ Bathroom floors, wet areas and showers finished with imported Silver Pearl
- ◆ Dornbracht chrome-finished, single lever faucets and under-mounted white lavatories
- ◆ Kohler one-piece toilets with soft-close lid
- ◆ Kohler chrome-finished bath accessories

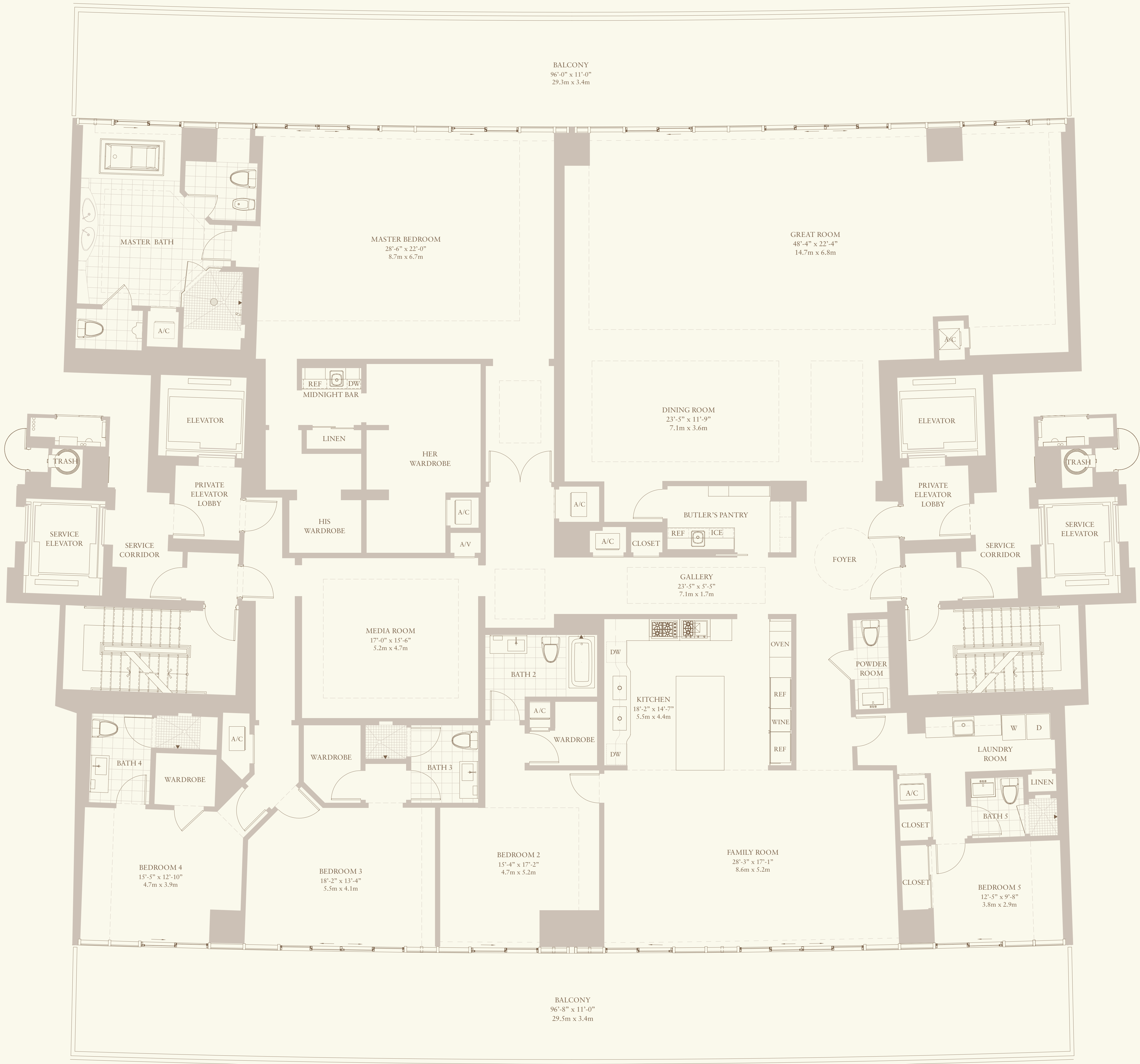
POWDER ROOMS

- ◆ Imported Italian "Snaidero Living" wall-mounted vanities in ebony with ebony countertops and vessel bowl sinks
- ◆ Floors finished with imported Silver Pearl
- ◆ Dornbracht chrome-finished, single lever faucets
- ◆ Kohler one-piece toilets with soft-close lid
- ◆ Kohler chrome-finished bath accessories

LAUNDRY

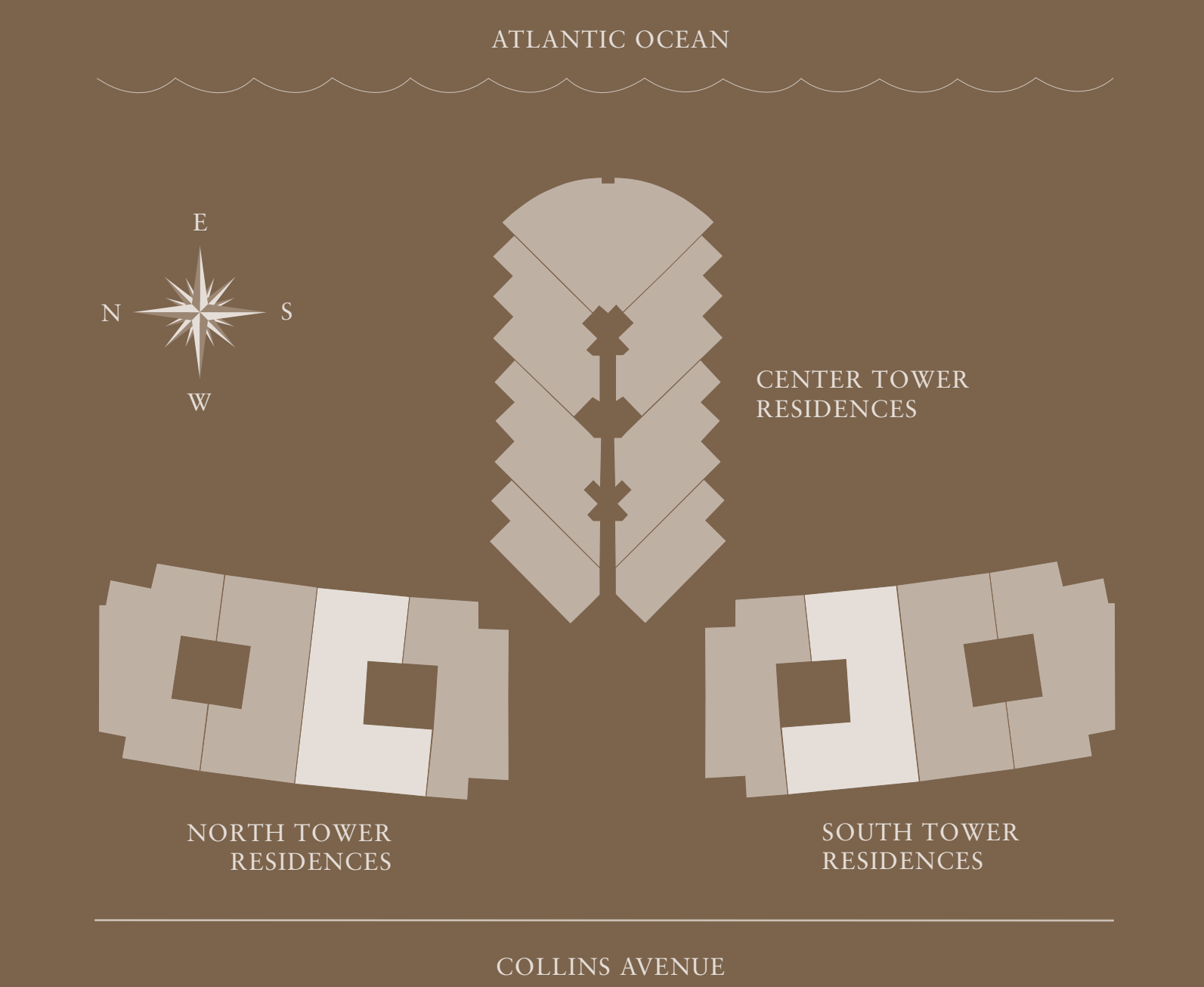
- ◆ Two Bosch energy-efficient, large-capacity washers and dryers
- ◆ Quartz Stone countertops and white-gloss cabinetry
- ◆ Biscuit laundry sink





MAYFAIR

4 BEDROOMS ♦ 5 1/2 BATHS
PLUS DEN



RESIDENCE	TOTAL SQ FT	TOTAL SQ M
BALCONY	3,912	363.4
TOTAL	1,255	116.6
	5,167	480.0
PAINT TO PAINT RESIDENCE	3,515	326.6

EXTERIOR

- ◆ Expansive private balconies featuring bronze glass railings, large outdoor living areas and breathtaking views
- ◆ Floor-to-ceiling bronze-tinted, impact-resistant glass windows and sliding exterior doors with energy-efficient panes that meet stringent South Florida building codes

INTERIOR

- ◆ Audio-Video, Surround Sound, and Drapery Keypad/Motor Pre-wire
- ◆ Intelligent climate controls with digital thermostats
- ◆ Decora designer series electrical outlets and switches
- ◆ Recessed down lighting in corridors and bathrooms
- ◆ White smooth finish 9'-10" ceilings except for drops required to accommodate mechanical equipment
- ◆ Prime-coat Finished Walls

KITCHEN

- ◆ Imported Italian "Idea 2000" cabinetry by Snaidero featuring high-gloss lacquer or wood-finished doors and drawer fronts with integrated LED lighting system
- ◆ Sub-Zero integrated refrigerator/freezer with independent temperature zones
- ◆ Sub-Zero wine storage system with dual zones and double refrigerator drawers
- ◆ Wolf Professional 36-inch cook-top with five burners
- ◆ Wolf convection/microwave oven

- ◆ Professional, stainless steel ventilation hood with built-in exhaust system and integrated lighting
- ◆ Dual Wolf E Series 30-inch oven in classic stainless steel finish with touch control panel and LCD display
- ◆ Dual Wolf 30-inch warming drawers with superior air control
- ◆ Dual Miele dishwashers
- ◆ Miele built-in, stainless steel coffee system
- ◆ InSinkErator garbage disposal
- ◆ Stainless steel countertops and full-height backsplashes with LED lighting system

MASTER SUITE

- ◆ Imported Italian "Snaidero Living" wall-mounted vanities with exotic ebony wood-veneer finish and Bianco Ceramicato countertops
- ◆ Imported select Statuary White Marble flooring throughout Master Bath, wet areas, and select walls
- ◆ Frameless glass shower enclosure
- ◆ Showers featuring wall-mounted shower head, large rain head, body sprays and hand-held shower wand
- ◆ Kohler infinity-style, overflow, deep-soaking air-jet tub
- ◆ Dornbracht chrome-finished, single lever faucets and under-mounted white lavatories
- ◆ Kohler "San Rafael" one-piece toilets
- ◆ Kohler bidet
- ◆ Kohler chrome-finished bath accessories including towel bars and toilet tissue dispenser

GUEST BEDROOM(S) & BATH(S)

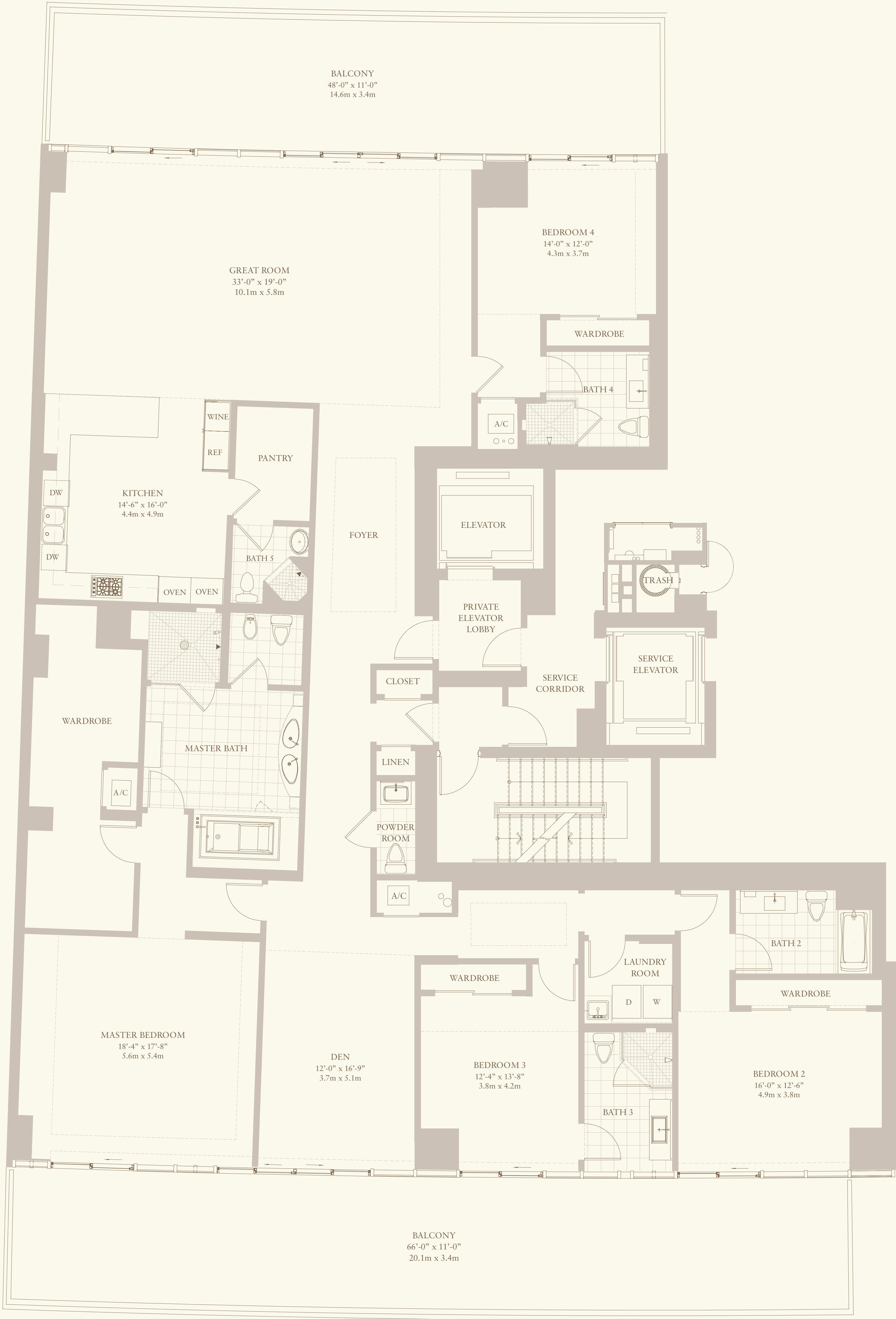
- ◆ Imported Italian "Snaidero Living" wall-mounted vanities with Calacatta marble countertops
- ◆ Bathroom floors, wet areas and showers finished with imported Silver Pearl
- ◆ Dornbracht chrome-finished, single lever faucets and under-mounted white lavatories
- ◆ Kohler one-piece toilets with soft-close lid
- ◆ Kohler chrome-finished bath accessories

POWDER ROOMS

- ◆ Imported Italian "Snaidero Living" wall-mounted vanities in ebony with ebony countertops and vessel bowl sinks
- ◆ Floors finished with imported Silver Pearl
- ◆ Dornbracht chrome-finished, single lever faucets
- ◆ Kohler one-piece toilets with soft-close lid
- ◆ Kohler chrome-finished bath accessories

LAUNDRY

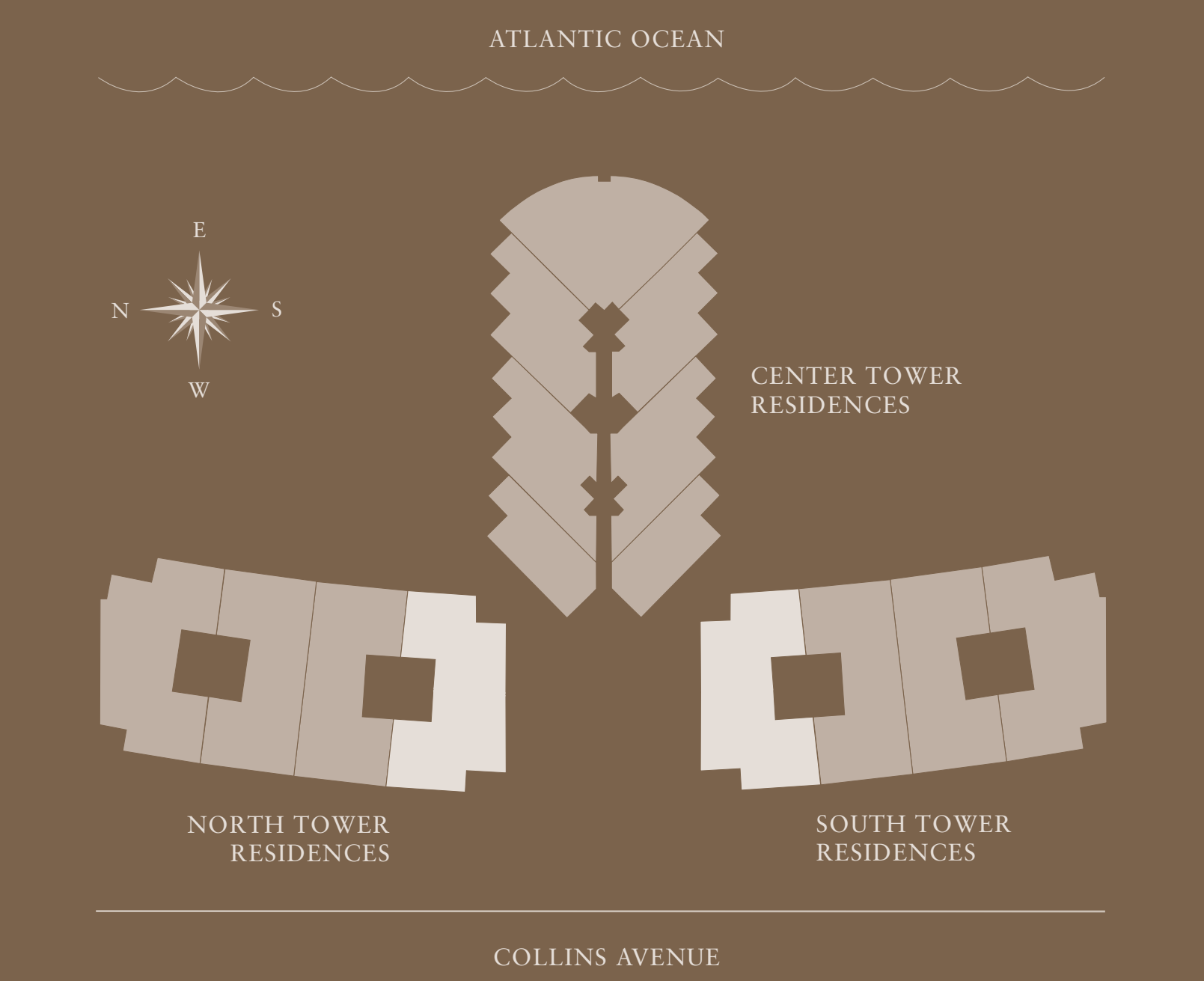
- ◆ Bosch energy-efficient, large-capacity washer and dryer
- ◆ Quartz Stone countertops and white-gloss cabinetry
- ◆ Biscuit laundry sink





CHELSEA

3 BEDROOMS • 3½ BATHS
PLUS DEN



	TOTAL SQ FT	TOTAL SQ M
RESIDENCE	3,688	342.6
BALCONY	1,049	97.5
TOTAL	4,737	440.1
PAINT TO PAINT RESIDENCE	3,396	315.5

EXTERIOR

- ◆ Expansive private balconies featuring bronze glass railings, large outdoor living areas and breathtaking views
- ◆ Floor-to-ceiling bronze-tinted, impact-resistant glass windows and sliding exterior doors with energy-efficient panes that meet stringent South Florida building codes

INTERIOR

- ◆ Audio-Video, Surround Sound, and Drapery Keypad/Motor Pre-wire
- ◆ Intelligent climate controls with digital thermostats
- ◆ Decora designer series electrical outlets and switches
- ◆ Recessed down lighting in corridors and bathrooms
- ◆ White smooth finish 9'-10" ceilings except for drops required to accommodate mechanical equipment
- ◆ Prime-coat Finished Walls

KITCHEN

- ◆ Imported Italian Snaidero "Venus" cabinetry designed by Pininfarina featuring high-gloss lacquer or wood-finished doors and drawer fronts with integrated LED lighting system
- ◆ Center Kitchen Island with quartz stone countertop
- ◆ Sub-Zero integrated refrigerator/freezer with independent temperature zones
- ◆ Sub-Zero wine storage system with dual zones and double refrigerator drawers
- ◆ Wolf Professional 36-inch cook-top with five burners

- ◆ Miele "Speed" oven with convection and microwave capabilities
- ◆ Integrated ventilation hood with built-in exhaust system and LED lighting
- ◆ Wolf E Series 30-inch oven in classic stainless steel finish with touch control panel and LCD display
- ◆ Wolf 30-inch warming drawer with superior air control
- ◆ Miele dishwasher
- ◆ Miele built-in, stainless steel coffee system
- ◆ InSinkErator garbage disposal
- ◆ Stainless steel countertops and full-height backsplashes with LED lighting system

MASTER SUITE

- ◆ Imported Italian "Snaidero Living" wall-mounted vanities with exotic ebony wood-veneer finish and Bianco Ceramicato countertops
- ◆ Imported select Statuary White Marble flooring throughout Master Bath, wet areas and select walls
- ◆ Frameless glass shower enclosure
- ◆ Showers featuring wall-mounted shower head, large rain head, body sprays and hand-held shower wand
- ◆ Kohler infinity-style, overflow, deep-soaking air-jet tub
- ◆ Dornbracht chrome-finished, single lever faucets and under-mounted white lavatories
- ◆ Kohler "San Rafael" one-piece toilets
- ◆ Kohler bidet

GUEST BEDROOM(S) & BATH(S)

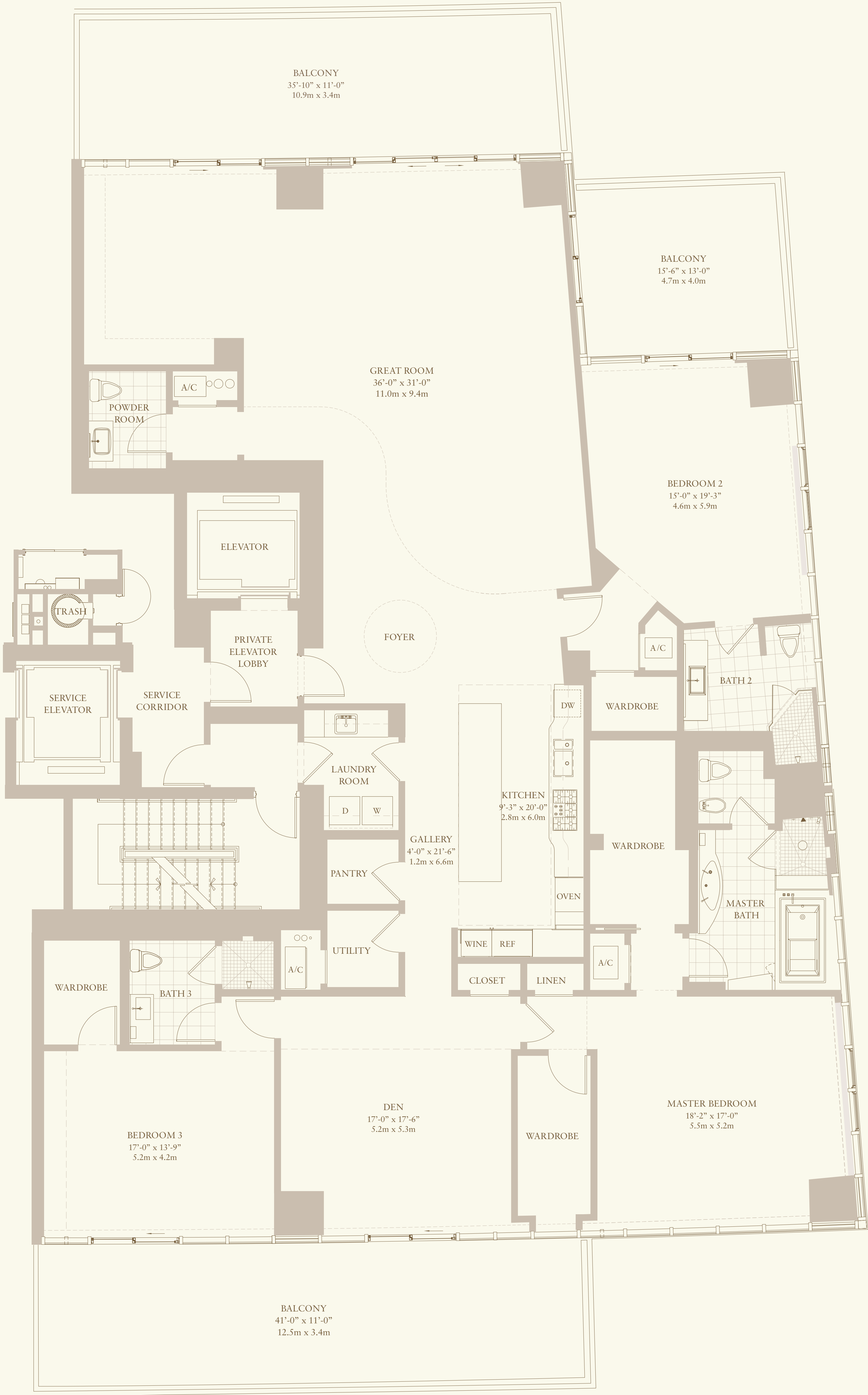
- ◆ Imported Italian "Snaidero Living" wall-mounted vanities with Calacatta marble countertops
- ◆ Bathroom floors, wet areas and showers finished with imported Silver Pearl
- ◆ Dornbracht chrome-finished, single lever faucets and under-mounted white lavatories
- ◆ Kohler one-piece toilets with soft-close lid
- ◆ Kohler chrome-finished bath accessories

POWDER ROOMS

- ◆ Imported Italian "Snaidero Living" wall-mounted vanities in ebony with ebony countertops and vessel bowl sinks
- ◆ Floors finished with imported Silver Pearl
- ◆ Dornbracht chrome-finished, single lever faucets
- ◆ Kohler one-piece toilets with soft-close lid
- ◆ Kohler chrome-finished bath accessories

LAUNDRY

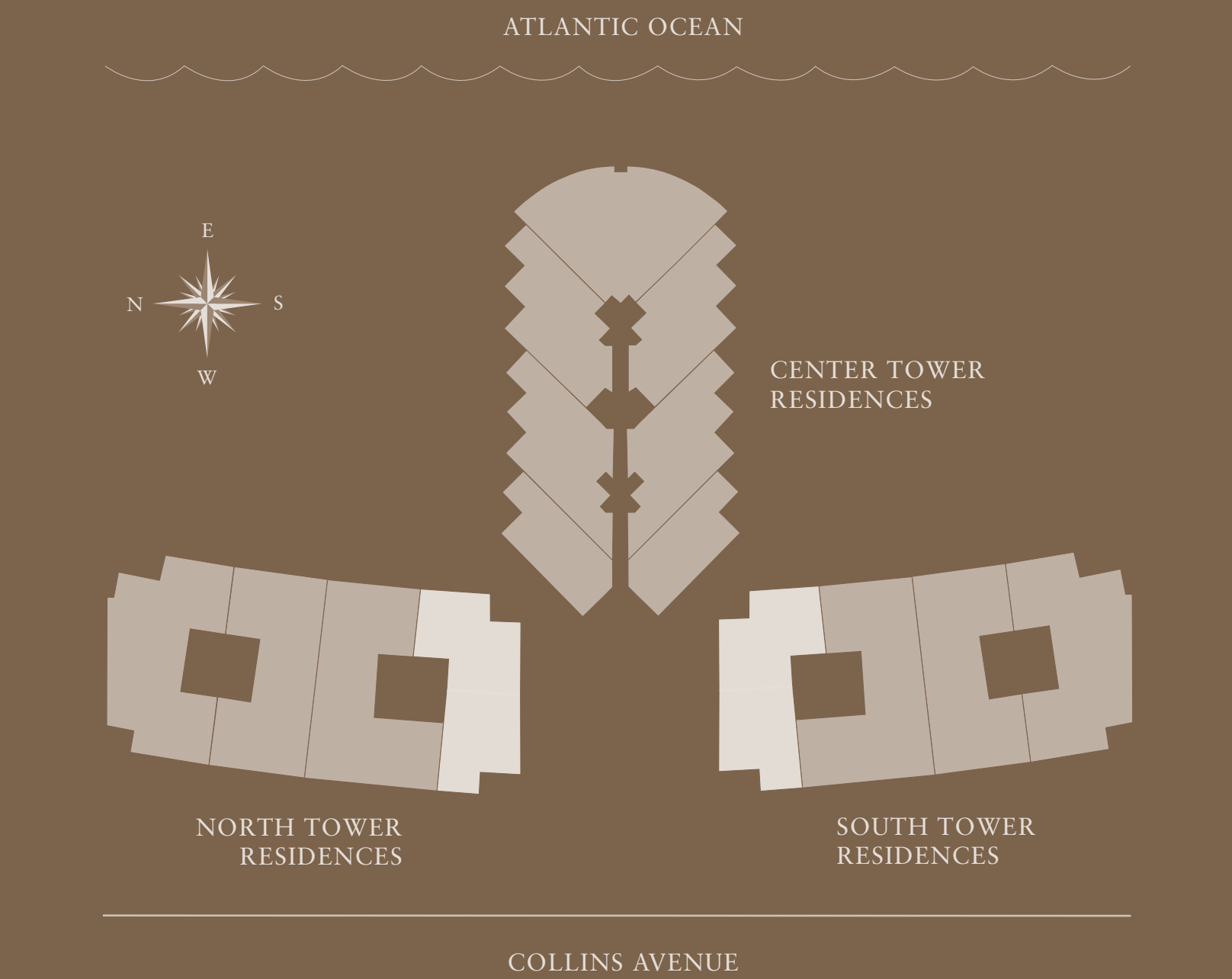
- ◆ Bosch energy-efficient, large-capacity washer and dryer
- ◆ Quartz Stone countertops and white-gloss cabinetry
- ◆ Biscuit laundry sink





VICTORIA

3 BEDROOMS ♦ 3 1/2 BATHS



	TOTAL SQ FT	TOTAL SQ M
RESIDENCE	3,269	303.7
BALCONY	858	79.7
TOTAL	4,127	383.4
PAINT TO PAINT RESIDENCE	2,957	274.7

EXTERIOR

- ◆ Expansive private balconies featuring bronze glass railings, large outdoor living areas and breathtaking views
- ◆ Floor-to-ceiling bronze-tinted, impact-resistant glass windows and sliding exterior doors with energy-efficient panes that meet stringent South Florida building codes

INTERIOR

- ◆ Audio-Video, Surround Sound, and Drapery Keypad/Motor Pre-wire
- ◆ Intelligent climate controls with digital thermostats
- ◆ Decora designer series electrical outlets and switches
- ◆ Recessed down lighting in corridors and bathrooms
- ◆ White smooth finish 9'-10" ceilings except for drops required to accommodate mechanical equipment
- ◆ Prime-coat Finished Walls

KITCHEN

- ◆ Imported Italian Snaidero "Venus" cabinetry designed by Pininfarina featuring high-gloss lacquer or wood-finished doors and drawer fronts with integrated LED lighting system
- ◆ Center Kitchen Island with Quartz Stone countertop
- ◆ Sub-Zero integrated refrigerator/freezer with independent temperature zones
- ◆ Sub-Zero wine storage system with dual zones and double refrigerator drawers
- ◆ Wolf Professional 36-inch cook-top with five burners

- ◆ Miele "Speed" oven with convection and microwave capabilities
- ◆ Integrated ventilation hood with built-in exhaust system and LED lighting
- ◆ Wolf E Series 30-inch oven in classic stainless steel finish with touch control panel and LCD display
- ◆ Wolf 30-inch warming drawer with superior air control
- ◆ Miele dishwasher
- ◆ Miele built-in, stainless steel coffee system
- ◆ InSinkErator garbage disposal
- ◆ Stainless steel countertops and full-height backsplashes with LED lighting system

MASTER SUITE

- ◆ Imported Italian "Snaidero Living" wall-mounted vanities with exotic ebony wood-veneer finish and Bianco Ceramicato countertops
- ◆ Imported select Statuary White Marble flooring throughout Master Bath, wet areas and select walls
- ◆ Frameless glass shower enclosure
- ◆ Showers featuring wall-mounted shower head, large rain head, body sprays and hand-held shower wand
- ◆ Kohler infinity-style, overflow, deep-soaking air-jet tub
- ◆ Dornbracht chrome-finished, single lever faucets and under-mounted white lavatories
- ◆ Kohler "San Rafael" one-piece toilets
- ◆ Kohler bidet

GUEST BEDROOM(S) & BATH(S)

- ◆ Imported Italian "Snaidero Living" wall-mounted vanities with Calacatta marble countertops
- ◆ Bathroom floors, wet areas and showers finished with imported Silver Pearl
- ◆ Dornbracht chrome-finished, single lever faucets and under-mounted white lavatories
- ◆ Kohler one-piece toilets with soft-close lid
- ◆ Kohler chrome-finished bath accessories

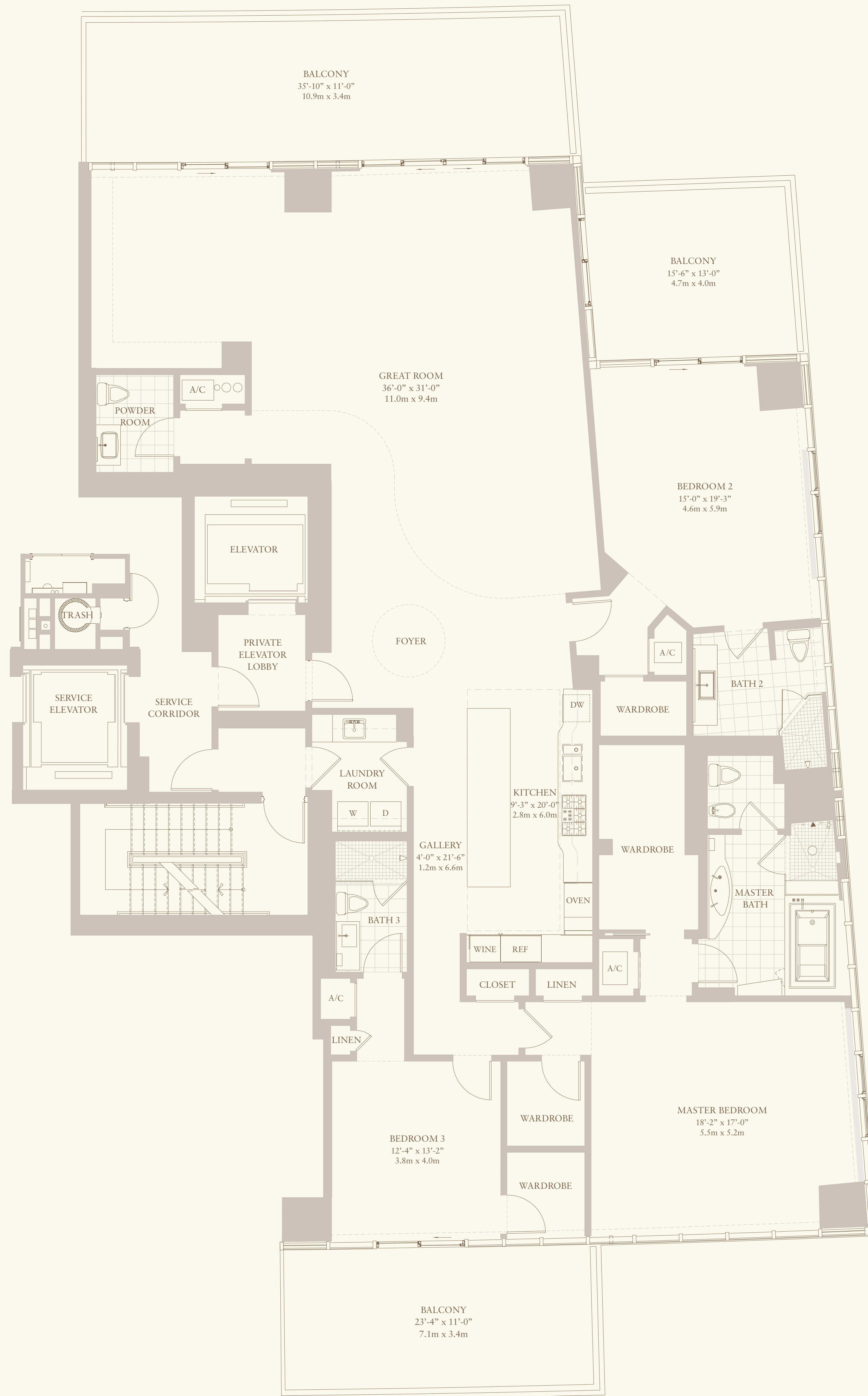
POWDER ROOMS

- ◆ Imported Italian "Snaidero Living" wall-mounted vanities in ebony with ebony countertops and vessel bowl sinks
- ◆ Floors finished with imported Silver Pearl
- ◆ Dornbracht chrome-finished, single lever faucets
- ◆ Kohler one-piece toilets with soft-close lid
- ◆ Kohler chrome-finished bath accessories

LAUNDRY

- ◆ Bosch energy-efficient, large-capacity washer and dryer
- ◆ Quartz Stone countertops and white-gloss cabinetry
- ◆ Biscuit laundry sink

NORTH TOWER





RESIDE IN A MODERN-DAY MASTERPIECE

Inspired living. Unrivalled address.

From the moment you arrive and are greeted by a courteous valet and concierge, you enter a world of privilege and sophistication. Your home is magnificent, with every amenity and convenience that great design can provide. And because you rise as much as 27 stories above the land and the sea, you have a perspective which others can only

dream of. Think of it as an estate, located on a wonderful beach, in a charming village, and all around you are the trappings of comfort and service from the finest hotel company in the world. You then have the essence of The Residences at The St. Regis Bal Harbour Resort.



NORTH AND SOUTH TOWER FEATURES

PROPERTY FEATURES

- ◆ Dramatic arrival plaza with grand porte-cochere
- ◆ Elegant three-story, 24-hour attended lobby designed by award-winning designers, Yabu Pushelberg
- ◆ Mezzanine level with recreation and state-of-the-art strength and fitness center
- ◆ Valet-only, fully enclosed multi-level parking garage
- ◆ High-speed gearless elevators with security controlled, key-activated system
- ◆ Semi-private or private elevator access to Residences
- ◆ Direct access to service elevators for deliveries and staff services
- ◆ Nine acres of lushly landscaped grounds and gardens with more than 600 feet of ocean frontage
- ◆ Oceanfront walking paths and green areas
- ◆ Heated Resident-only swimming pools with service staff
- ◆ Full-service poolside pavilion and wet bar

RESIDENCE SERVICES

- ◆ Signature St. Regis Butler Service. St. Regis Butlers are always on-call to manage and facilitate Resident requests. They are also equipped with hand-held devices so Residents can contact them from anywhere in the world
- ◆ Valet, concierge and discrete (but ever-present) security personnel
- ◆ Residential manager and dedicated full-time staff exclusively to serve Residents
- ◆ Personal shopper and shopping bag pick-up from Bal Harbour Shops

SELECT HOTEL SERVICES

(Select services are available at additional costs)

- ◆ Personal chauffeur and limousine service for airport pick-up and nights on the town
- ◆ Gourmet dining at the hotel's signature oceanfront restaurant
- ◆ Rare vintages at the hotel's St. Regis Wine Bar
- ◆ Pre-arrival provisioning, grocery shopping and delivery
- ◆ 24-hour in-room dining, catering and chef service
- ◆ Housekeeping, dry cleaning and laundry service
- ◆ Nanny and childcare services
- ◆ Children's programs
- ◆ Oceanfront cabanas with flat-screen television, mini bar, icemaker and Wi-Fi connectivity
- ◆ Personalized service for pets

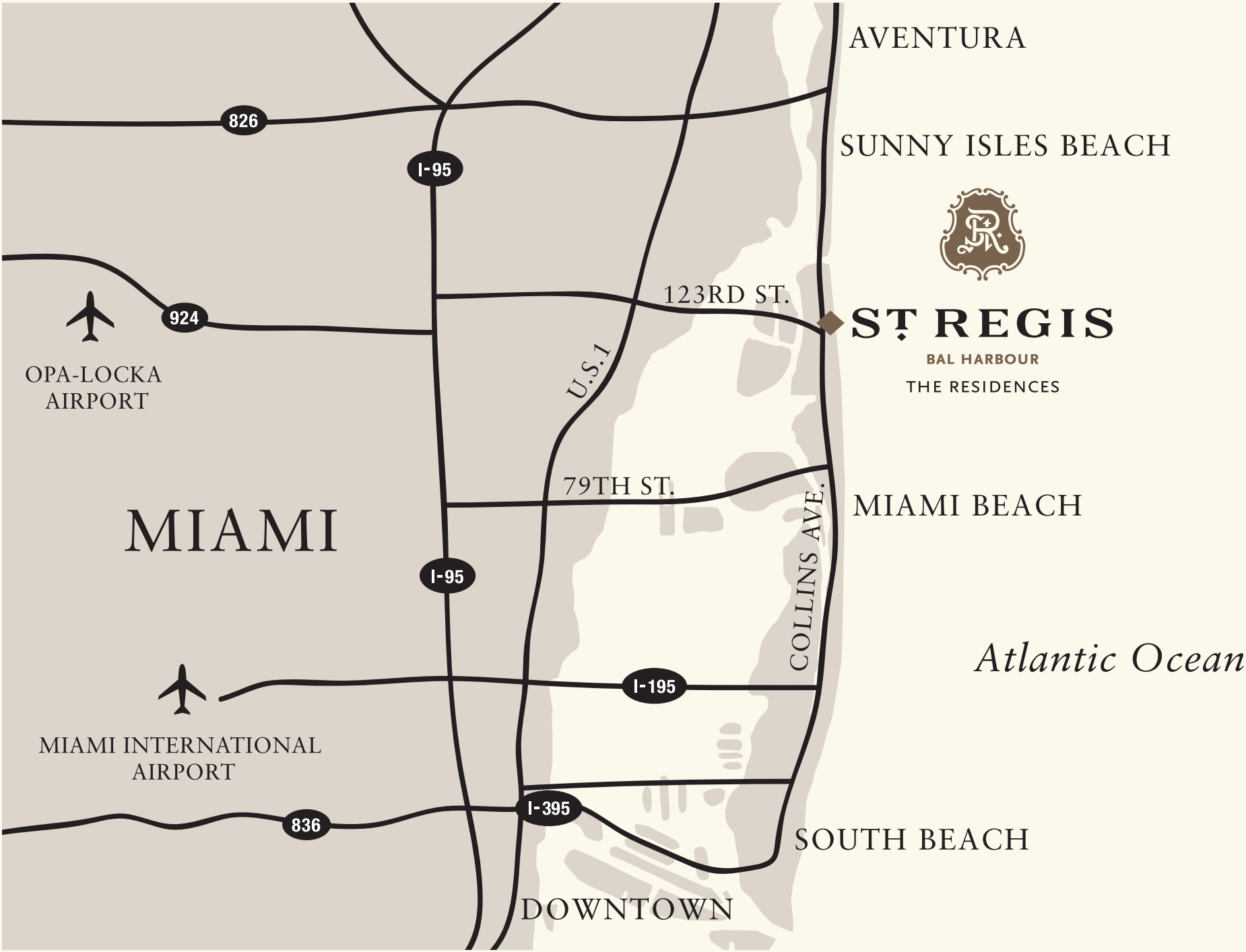
STATE-OF-THE-ART FITNESS FACILITIES

- ◆ Exercise and cardiovascular equipment with computerized monitoring and tracking capabilities
- ◆ Individual television monitors
- ◆ Personal trainers available for weight training and high-energy activity instruction
- ◆ Sauna and herbal steam room at Center Tower facility

REMÈDE® SPA

(Spa services are available at additional costs)

- ◆ A superb 12,000-square-foot (1,114.8 square meters) Remède Spa, exclusive to St. Regis Hotels and Resorts
- ◆ Comprehensive menu of facial, massage, body, wax and nail services
- ◆ Signature touches like champagne and Jacques Torres truffles
- ◆ Laboratoire Remède® focuses on anti-aging therapies that combine science, nature and the senses



ST REGIS

BAL HARBOUR

THE RESIDENCES

STREGISBALHARBOURRESIDENCES.COM

For the pleasures of ownership, please call 305 993 6000
9701 Collins Avenue, Bal Harbour, Florida, 33154



THE RESIDENCES AT THE ST. REGIS BAL HARBOUR RESORT IS BEING DEVELOPED BY AFFILIATES OF STARWOOD HOTELS & RESORTS WORLDWIDE, INC., ONE OF THE LEADING HOTEL AND LEISURE COMPANIES IN THE WORLD, WITH 1,025 PROPERTIES IN OVER 100 COUNTRIES. STARWOOD IS A FULLY INTEGRATED OWNER, OPERATOR AND FRANCHISOR OF HOTELS AND RESORTS.

THE DRAWINGS HEREIN ARE CONCEPTUAL ONLY AND ARE SUBJECT TO CHANGE WITHOUT NOTICE AT THE DISCRETION OF THE DEVELOPER. THE DEVELOPER RESERVES THE RIGHT TO MAKE ADDITIONS, DELETIONS AND MODIFICATIONS TO THE DRAWINGS AS THE DEVELOPER MAY DEEM APPROPRIATE OR DESIRABLE. ANY FURNITURE OR DECORATOR ITEMS DEPICTED HEREIN ARE SHOWN FOR ARTISTIC AND ILLUSTRATIVE PURPOSES ONLY AND ARE NOT INCLUDED IN THE PURCHASE AND SALE OF THE RESIDENCE. DIMENSIONS AND SQUARE FOOTAGES ARE APPROXIMATE AND MAY VARY WITH ACTUAL CONSTRUCTION. ALL OF THE MATERIALS, INCLUDING TILE, MARBLE, STONE, GRANITE, CABINETS, WOOD, STAIN, GROUT, WALL AND CEILING TEXTURES, MICA, ARE SUBJECT TO SIZE AND COLOR VARIATIONS, GRAIN AND QUALITY VARIATIONS, AND PATTERN AND TEXTURE VARIATIONS. IF CIRCUMSTANCES ARISE WHICH, IN SELLER'S OPINION, WARRANT CHANGES OF SUPPLIERS, MANUFACTURERS, BRAND NAMES OR ITEMS, OR IF SELLER ELECTS TO OMIT CERTAIN ITEMS, SELLER MAY MODIFY AND/OR MAKE SUBSTITUTIONS FOR EQUIPMENT, MATERIAL, APPLIANCES, ETC., WITH ITEMS, WHICH IN SELLER'S OPINION ARE OF EQUAL OR BETTER QUALITY (REGARDLESS OF COST), AND (VII) SELLER HAS THE RIGHT TO SUBSTITUTE OR CHANGE MATERIALS AND/OR STAIN COLORS UTILIZED IN WOOD DECOR (IF ANY).

STATED DIMENSIONS ARE MEASURED TO THE EXTERIOR BOUNDARIES OF THE EXTERIOR WALLS AND THE CENTER LINE OF INTERIOR DEMISING WALLS AND, IN FACT, VARY FROM THE DIMENSIONS THAT WOULD BE DETERMINED BY USING THE DESCRIPTION AND DEFINITION OF THE "UNIT" SET FORTH IN THE DECLARATION (WHICH GENERALLY ONLY INCLUDES THE INTERIOR AIRSPACE BETWEEN THE PERIMETER WALLS AND EXCLUDES EXTERIOR STRUCTURAL COMPONENTS). ADDITIONALLY, MEASUREMENTS OF ROOMS SET FORTH ON ANY FLOOR PLAN ARE GENERALLY TAKEN AT THE GREATEST POINTS OF EACH GIVEN ROOM (AS IF THE ROOM WERE A PERFECT RECTANGLE), WITHOUT REGARDS FOR ANY CUT OUTS ACCORDINGLY, THE AREA OF THE ACTUAL ROOM WILL TYPICALLY BE SMALLER THAN THE PRODUCT OBTAINED BY MULTIPLYING THE STATED LENGTH TIMES WIDTH. ALL DIMENSIONS ARE APPROXIMATE AND ALL FLOOR PLANS AND DEVELOPMENT PLANS ARE SUBJECT TO CHANGE.

ORAL REPRESENTATIONS CANNOT BE RELIED UPON AS CORRECTLY STATING REPRESENTATIONS OF THE DEVELOPER. FOR CORRECT REPRESENTATIONS, MAKE REFERENCE TO THE DOCUMENTS REQUIRED BY SECTION 718.503, FLORIDA STATUTES, TO BE FURNISHED BY A DEVELOPER TO A BUYER OR LESSEE. CERTAIN UNITS IN THIS CONDOMINIUM ARE SUBJECT TO TIMESHARE ESTATES. OBTAIN THE PROPERTY REPORT REQUIRED BY FEDERAL LAW AND READ IT BEFORE SIGNING ANYTHING. NO FEDERAL AGENCY HAS JUDGED THE MERITS OR VALUE, IF ANY, OF THIS PROPERTY. THIS OFFERING IS MADE ONLY BY THE PROSPECTUS FOR THE CONDOMINIUM AND NO STATEMENT SHOULD BE RELIED UPON IF NOT MADE IN THE PROSPECTUS. NOT AN OFFERING WHERE PROHIBITED BY STATE LAW. THE DEVELOPER'S USE OF THE ST. REGIS® TRADEMARKS IS PURSUANT TO A LICENSE FROM THE SHERATON LLC. THE COMPLETE OFFERING TERMS ARE IN A OFFERING PLAN AVAILABLE FROM THE SPONSOR FILE NO. 07-0294

