

VICEROY BRICKELL

THE RESIDENCES

RESIDENTIAL FLOOR PLANS



LOCATION



VICEROY BRICKELL
THE RESIDENCES

SITE MAP



EAST VIEWS



NORTH EAST VIEWS



NORTH VIEWS



NORTH WEST VIEWS



SOUTH WEST VIEWS



SOUTH VIEWS



SOUTH EAST VIEWS

VICEROY BRICKELL

THE RESIDENCES

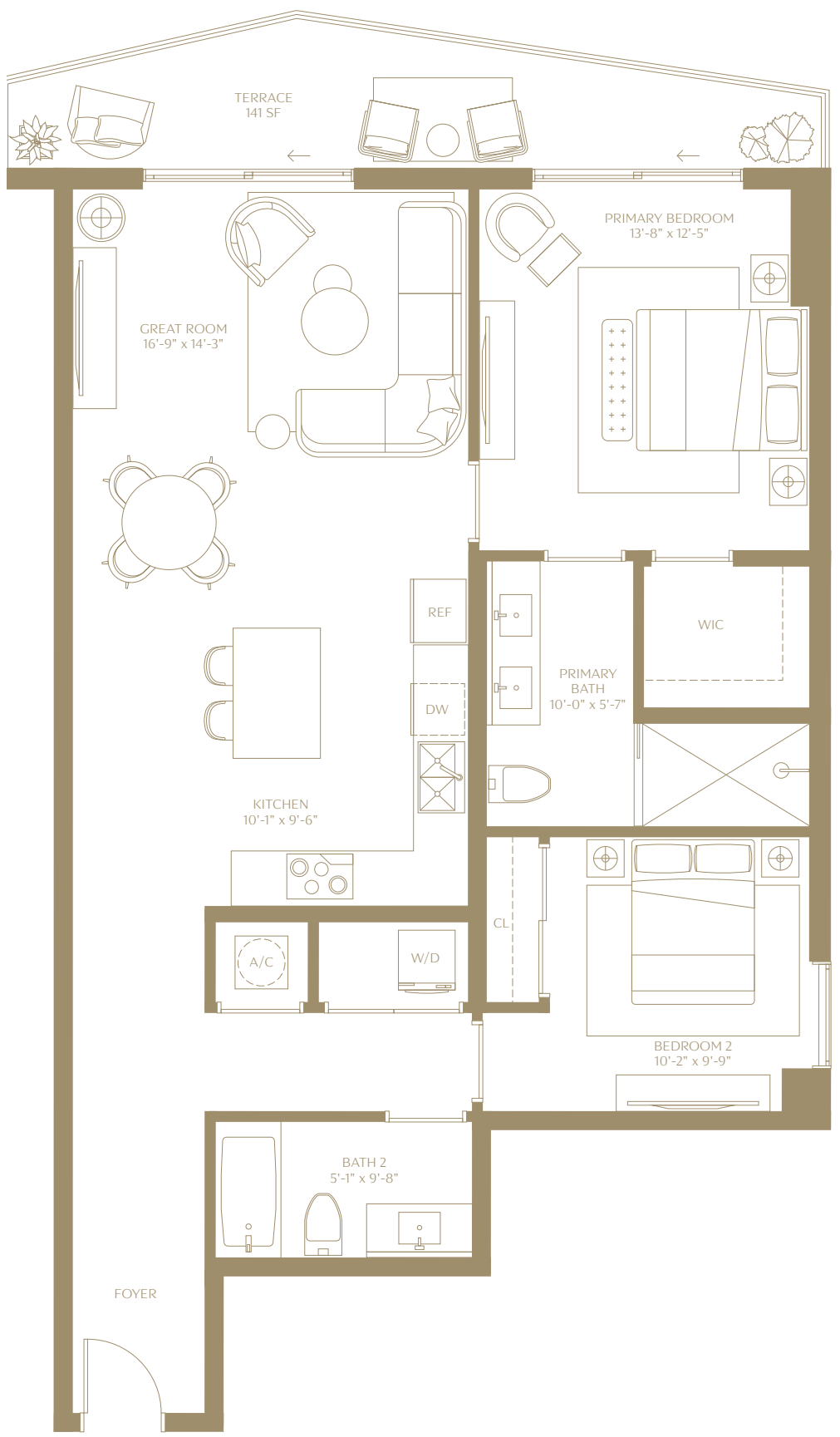
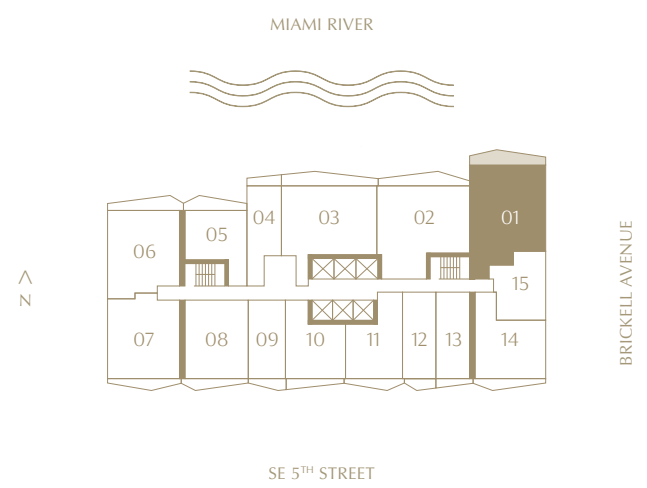
Residence 01

2 BEDROOMS | 2 BATHROOMS
LEVELS 15 TO 42
NORTHEAST EXPOSURE

INTERIOR
1,217 SQ. FT. | 113.06 SQM

TERRACE
141 SQ. FT. | 13.10 SQM

TOTAL
1,358 SQ. FT. | 113.06 SQM



ⓘ The dimensions stated for this floor plan are approximate because there are various recognized methods for calculating the square footage of a unit. The square footage stated here is calculated from the exterior boundaries of the exterior walls to the centerline of interior demising walls without deductions for cutouts, curves, or architectural features. This method typically results in quoted dimensions greater than the dimensions that would be determined by using other accepted methods. The definition of "Unit" and the calculation method to be relied upon is set forth by 444 BRICKELL TWO, LLC (the "Developer") in Developer's prospectus which method may result in a square footage calculation less than the result of the calculation method used here. VICEROY BRANDS, LLC owns the mark and name Viceroy®. The Developer is permitted to use the name and logo of The Related Group® and Viceroy® pursuant to license agreements which are valid unless terminated or expired; neither The Related Group nor Viceroy Brands, LLC are the Developer. Consult the Developer's prospectus to learn what is included with Unit purchase and to understand Unit dimensions. 2024 © 444 BRICKELL TWO, LLC with all rights reserved.

VICEROY BRICKELL
THE RESIDENCES

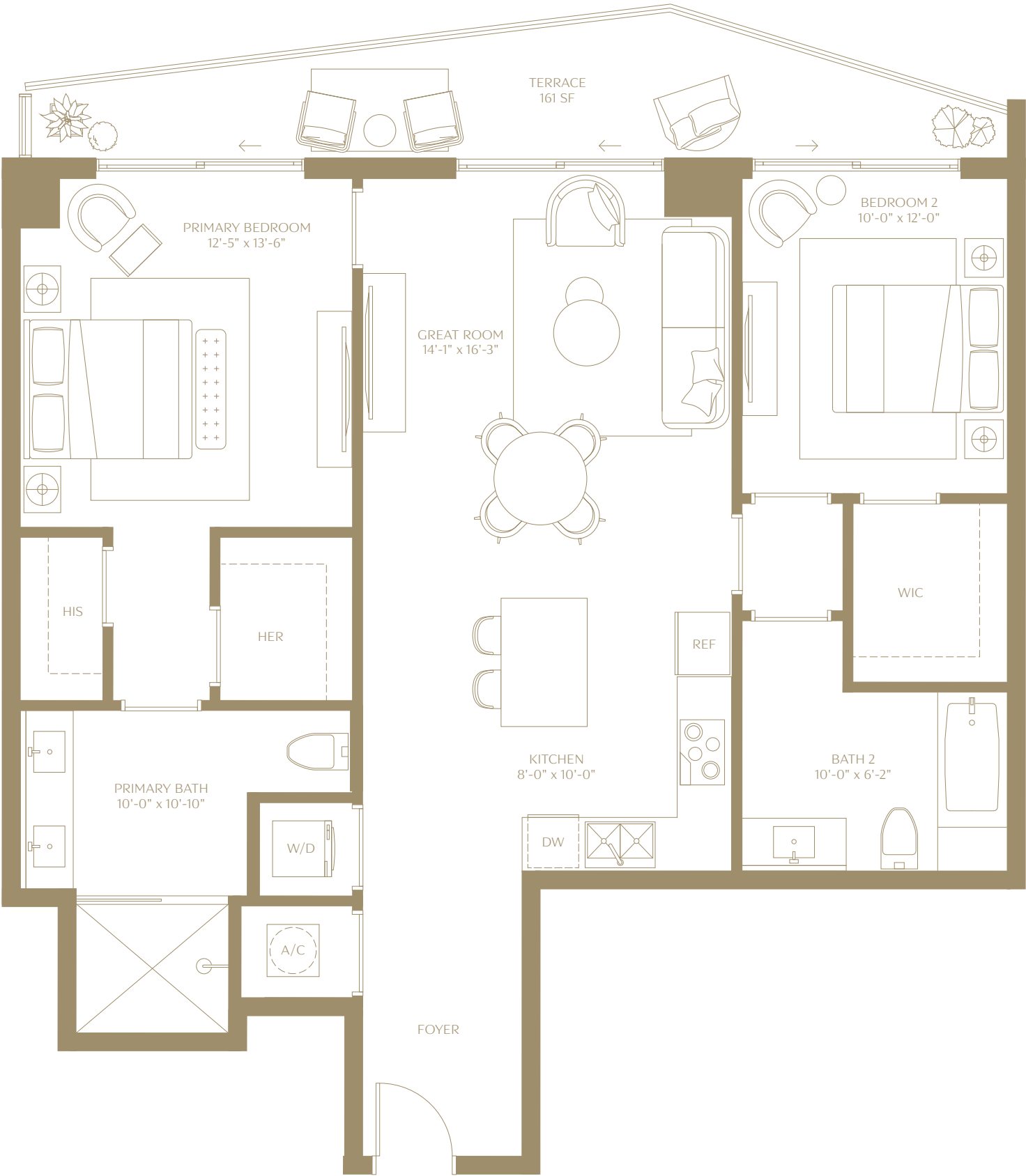
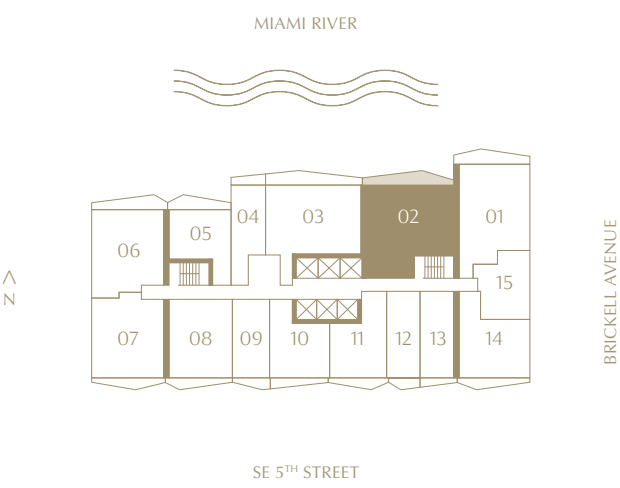
Residence 02

2 BEDROOMS | 2 BATHROOMS
LEVELS 15 TO 42
NORTH EXPOSURE

INTERIOR
1,286 SQ. FT. | 119.47 SQM

TERRACE
161 SQ. FT. | 14.96 SQM

TOTAL
1,447 SQ. FT. | 134.43 SQM



ⓘ The dimensions stated for this floor plan are approximate because there are various recognized methods for calculating the square footage of a unit. The square footage stated here is calculated from the exterior boundaries of the exterior walls to the centerline of interior demising walls without deductions for cutouts, curves, or architectural features. This method typically results in quoted dimensions greater than the dimensions that would be determined by using other accepted methods. The definition of "Unit" and the calculation method to be relied upon is set forth by 444 BRICKELL TWO, LLC (the "Developer") in Developer's prospectus which method may result in a square footage calculation less than the result of the calculation method used here. VICEROY BRANDS, LLC owns the mark and name Viceroy®. The Developer is permitted to use the name and logo of The Related Group® and Viceroy® pursuant to license agreements which are valid unless terminated or expired; neither The Related Group nor Viceroy Brands, LLC are the Developer. Consult the Developer's prospectus to learn what is included with Unit purchase and to understand Unit dimensions. 2024 © 444 BRICKELL TWO, LLC with all rights reserved.

VICEROY BRICKELL
THE RESIDENCES

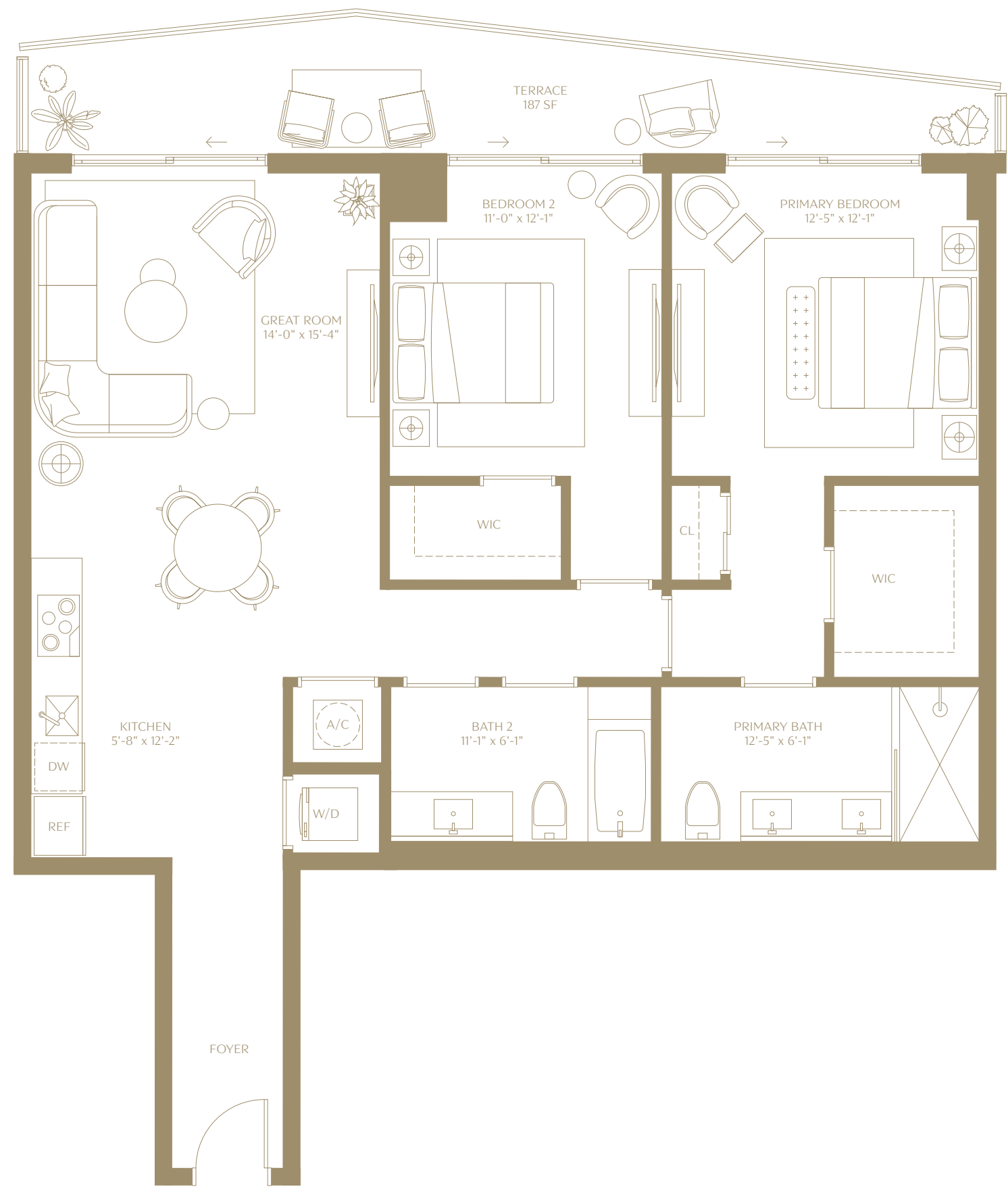
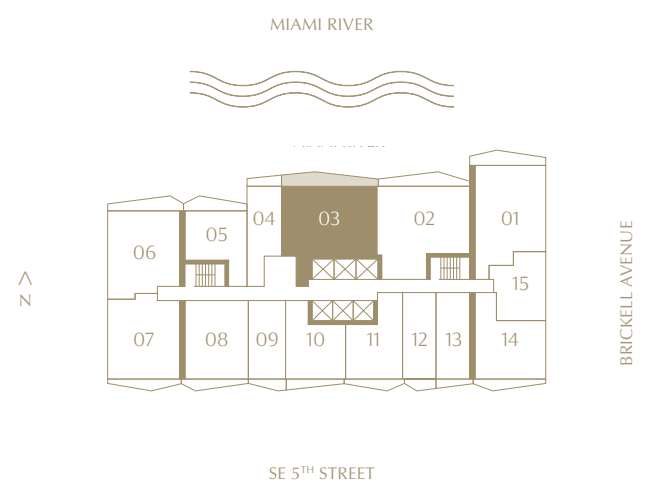
Residence 03

2 BEDROOMS | 2 BATHROOMS
LEVELS 15 TO 42
NORTH EXPOSURE

INTERIOR
1,235 SQ. FT. | 114.74 SQM

TERRACE
187 SQ. FT. | 17.37 SQM

TOTAL
1,422 SQ. FT. | 132.11 SQM



ⓘ The dimensions stated for this floor plan are approximate because there are various recognized methods for calculating the square footage of a unit. The square footage stated here is calculated from the exterior boundaries of the exterior walls to the centerline of interior demising walls without deductions for cutouts, curves, or architectural features. This method typically results in quoted dimensions greater than the dimensions that would be determined by using other accepted methods. The definition of "Unit" and the calculation method to be relied upon is set forth by 444 BRICKELL TWO, LLC (the "Developer") in Developer's prospectus which method may result in a square footage calculation less than the result of the calculation method used here. VICEROY BRANDS, LLC owns the mark and name Viceroy®. The Developer is permitted to use the name and logo of The Related Group® and Viceroy® pursuant to license agreements which are valid unless terminated or expired; neither The Related Group nor Viceroy Brands, LLC are the Developer. Consult the Developer's prospectus to learn what is included with Unit purchase and to understand Unit dimensions. 2024 © 444 BRICKELL TWO, LLC with all rights reserved.

VICEROY BRICKELL
THE RESIDENCES

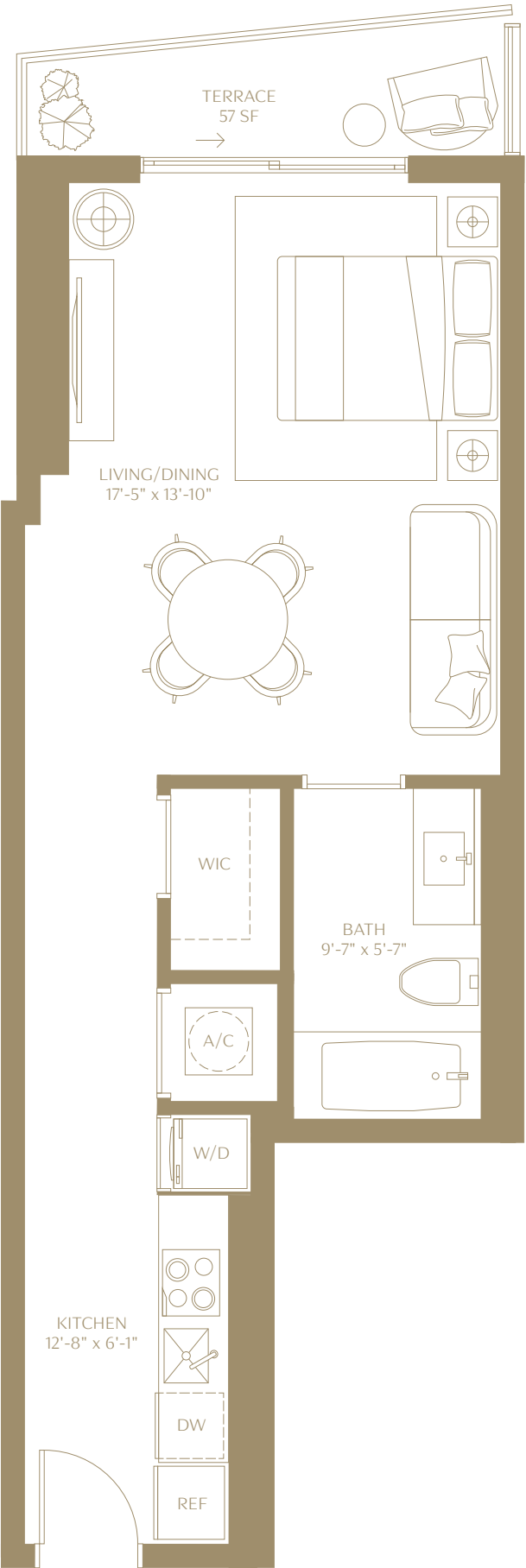
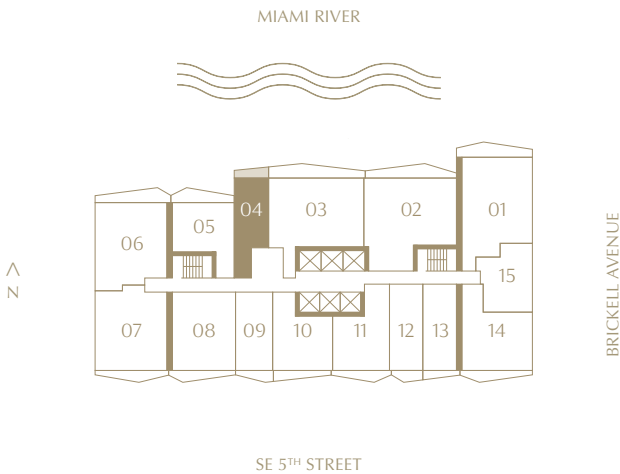
Residence 04

STUDIO | 1 BATHROOM
LEVELS 15 TO 42
NORTH EXPOSURE

INTERIOR
519 SQ. FT. | 48.22 SQM

TERRACE
57 SQ. FT. | 5.30 SQM

TOTAL
576 SQ. FT. | 53.51 SQM



ⓘ The dimensions stated for this floor plan are approximate because there are various recognized methods for calculating the square footage of a unit. The square footage stated here is calculated from the exterior boundaries of the exterior walls to the centerline of interior demising walls without deductions for cutouts, curves, or architectural features. This method typically results in quoted dimensions greater than the dimensions that would be determined by using other accepted methods. The definition of "Unit" and the calculation method to be relied upon is set forth by 444 BRICKELL TWO, LLC (the "Developer") in Developer's prospectus which method may result in a square footage calculation less than the result of the calculation method used here. VICEROY BRANDS, LLC owns the mark and name Viceroy®. The Developer is permitted to use the name and logo of The Related Group® and Viceroy® pursuant to license agreements which are valid unless terminated or expired; neither The Related Group nor Viceroy Brands, LLC are the Developer. Consult the Developer's prospectus to learn what is included with Unit purchase and to understand Unit dimensions. 2024 © 444 BRICKELL TWO, LLC with all rights reserved.

VICEROY BRICKELL
THE RESIDENCES

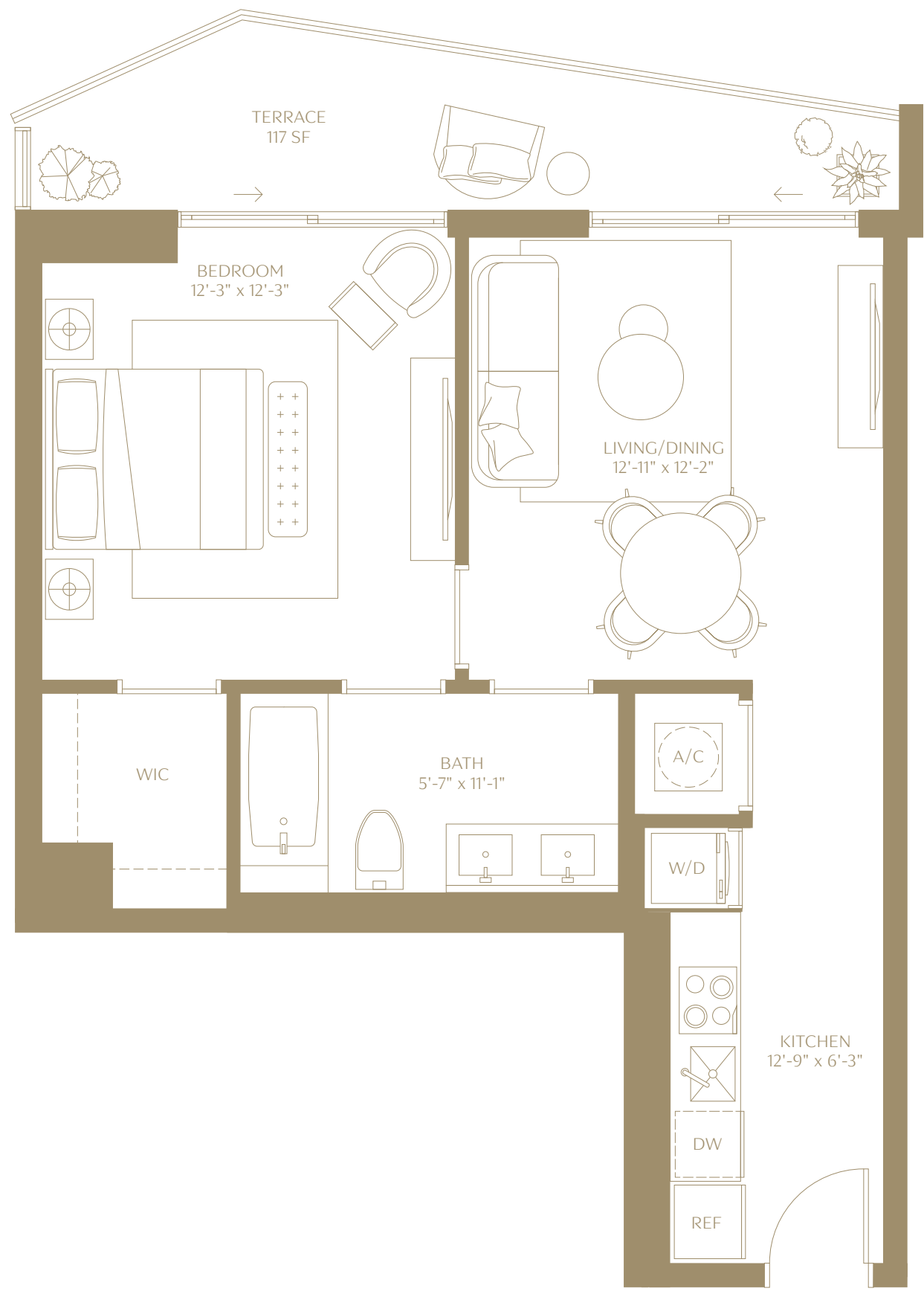
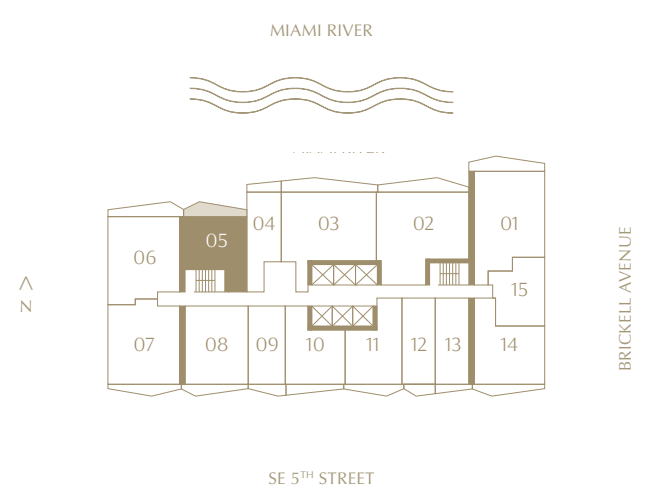
Residence 05

1 BEDROOM | 1 BATHROOM
LEVELS 15 TO 42
NORTH EXPOSURE

INTERIOR
670 SQ. FT. | 62.25 SQM

TERRACE
117 SQ. FT. | 10.87 SQM

TOTAL
787 SQ. FT. | 73.25 SQM



ⓘ The dimensions stated for this floor plan are approximate because there are various recognized methods for calculating the square footage of a unit. The square footage stated here is calculated from the exterior boundaries of the exterior walls to the centerline of interior demising walls without deductions for cutouts, curves, or architectural features. This method typically results in quoted dimensions greater than the dimensions that would be determined by using other accepted methods. The definition of "Unit" and the calculation method to be relied upon is set forth by 444 BRICKELL TWO, LLC (the "Developer") in Developer's prospectus which method may result in a square footage calculation less than the result of the calculation method used here. VICEROY BRANDS, LLC owns the mark and name Viceroy®. The Developer is permitted to use the name and logo of The Related Group® and Viceroy® pursuant to license agreements which are valid unless terminated or expired; neither The Related Group nor Viceroy Brands, LLC are the Developer. Consult the Developer's prospectus to learn what is included with Unit purchase and to understand Unit dimensions. 2024 © 444 BRICKELL TWO, LLC with all rights reserved.

VICEROY BRICKELL
THE RESIDENCES

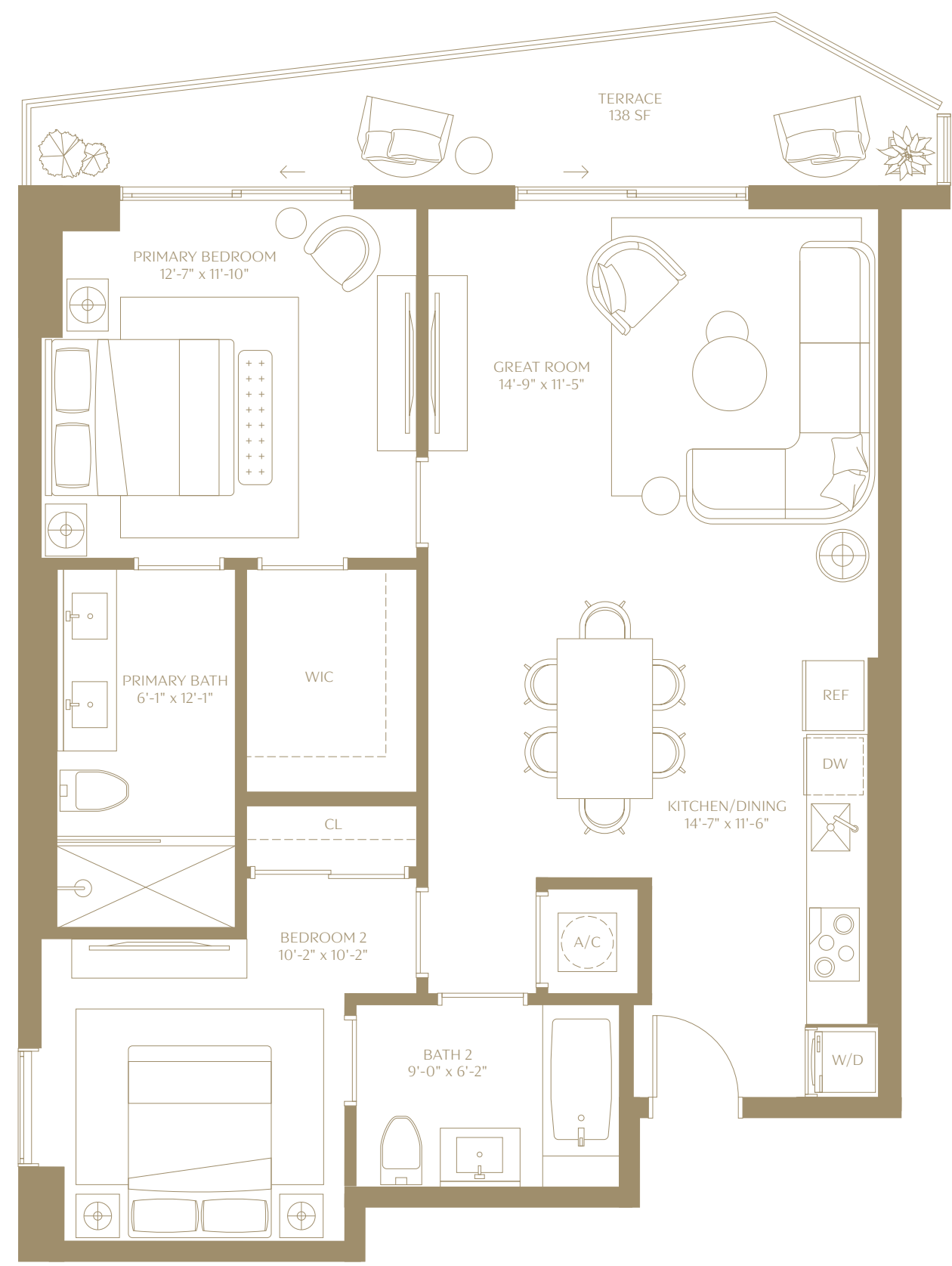
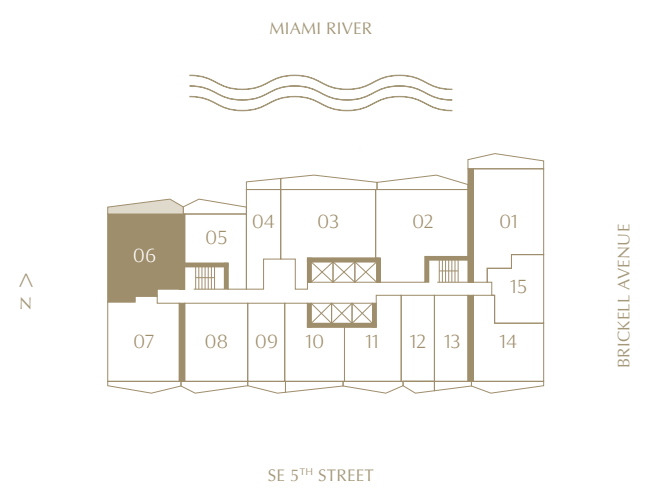
Residence 06

2 BEDROOMS | 2 BATHROOMS
LEVELS 15 TO 42
NORTHWEST EXPOSURE

INTERIOR
1,041 SQ. FT. | 96.71 SQM

TERRACE
138 SQ. FT. | 12.82 SQM

TOTAL
1,179 SQ. FT. | 109.53 SQM



ⓘ The dimensions stated for this floor plan are approximate because there are various recognized methods for calculating the square footage of a unit. The square footage stated here is calculated from the exterior boundaries of the exterior walls to the centerline of interior demising walls without deductions for cutouts, curves, or architectural features. This method typically results in quoted dimensions greater than the dimensions that would be determined by using other accepted methods. The definition of "Unit" and the calculation method to be relied upon is set forth by 444 BRICKELL TWO, LLC (the "Developer") in Developer's prospectus which method may result in a square footage calculation less than the result of the calculation method used here. VICEROY BRANDS, LLC owns the mark and name Viceroy®. The Developer is permitted to use the name and logo of The Related Group® and Viceroy® pursuant to license agreements which are valid unless terminated or expired; neither The Related Group nor Viceroy Brands, LLC are the Developer. Consult the Developer's prospectus to learn what is included with Unit purchase and to understand Unit dimensions. 2024 © 444 BRICKELL TWO, LLC with all rights reserved.

VICEROY BRICKELL
THE RESIDENCES

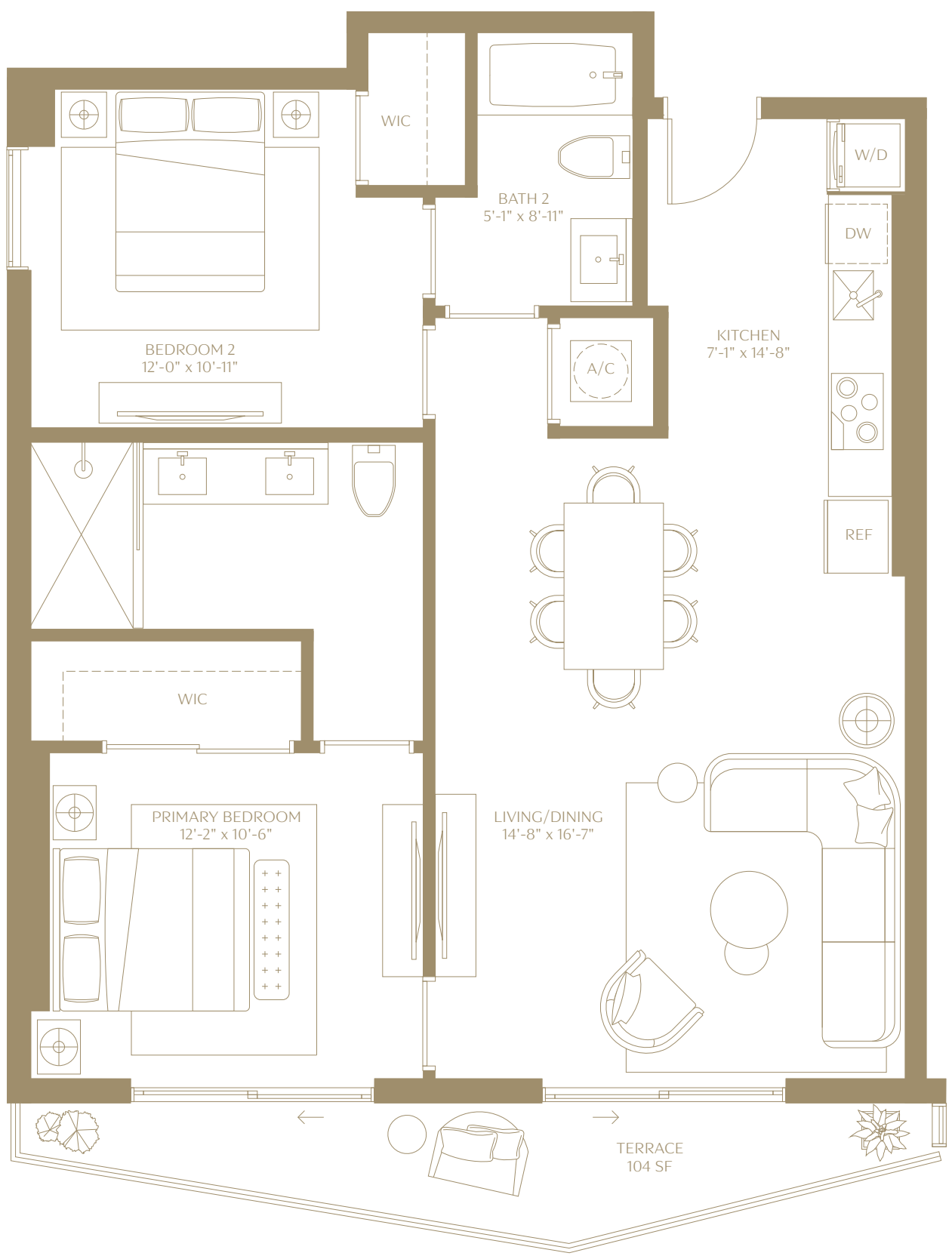
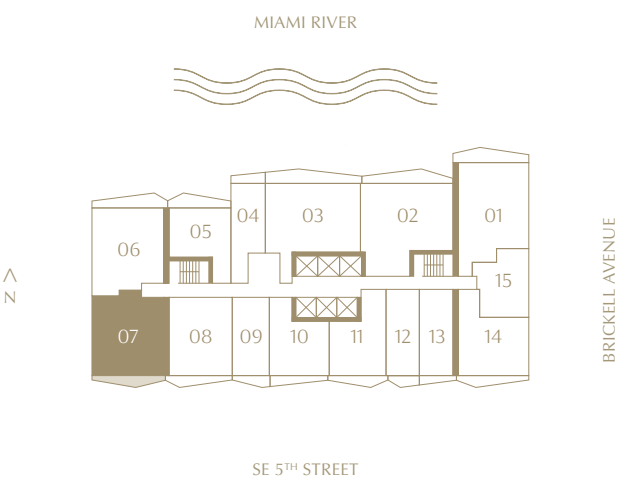
Residence 07

2 BEDROOMS | 2 BATHROOMS
LEVELS 15 TO 42
SOUTHWEST EXPOSURE

INTERIOR
1,030 SQ. FT. | 95.69 SQM

TERRACE
104 SQ. FT. | 9.66 SQM

TOTAL
1,134 SQ. FT. | 105.35 SQM



ⓘ The dimensions stated for this floor plan are approximate because there are various recognized methods for calculating the square footage of a unit. The square footage stated here is calculated from the exterior boundaries of the exterior walls to the centerline of interior demising walls without deductions for cutouts, curves, or architectural features. This method typically results in quoted dimensions greater than the dimensions that would be determined by using other accepted methods. The definition of "Unit" and the calculation method to be relied upon is set forth by 444 BRICKELL TWO, LLC (the "Developer") in Developer's prospectus which method may result in a square footage calculation less than the result of the calculation method used here. VICEROY BRANDS, LLC owns the mark and name Viceroy®. The Developer is permitted to use the name and logo of The Related Group® and Viceroy® pursuant to license agreements which are valid unless terminated or expired; neither The Related Group nor Viceroy Brands, LLC are the Developer. Consult the Developer's prospectus to learn what is included with Unit purchase and to understand Unit dimensions. 2024 © 444 BRICKELL TWO, LLC with all rights reserved.

VICEROY BRICKELL

THE RESIDENCES

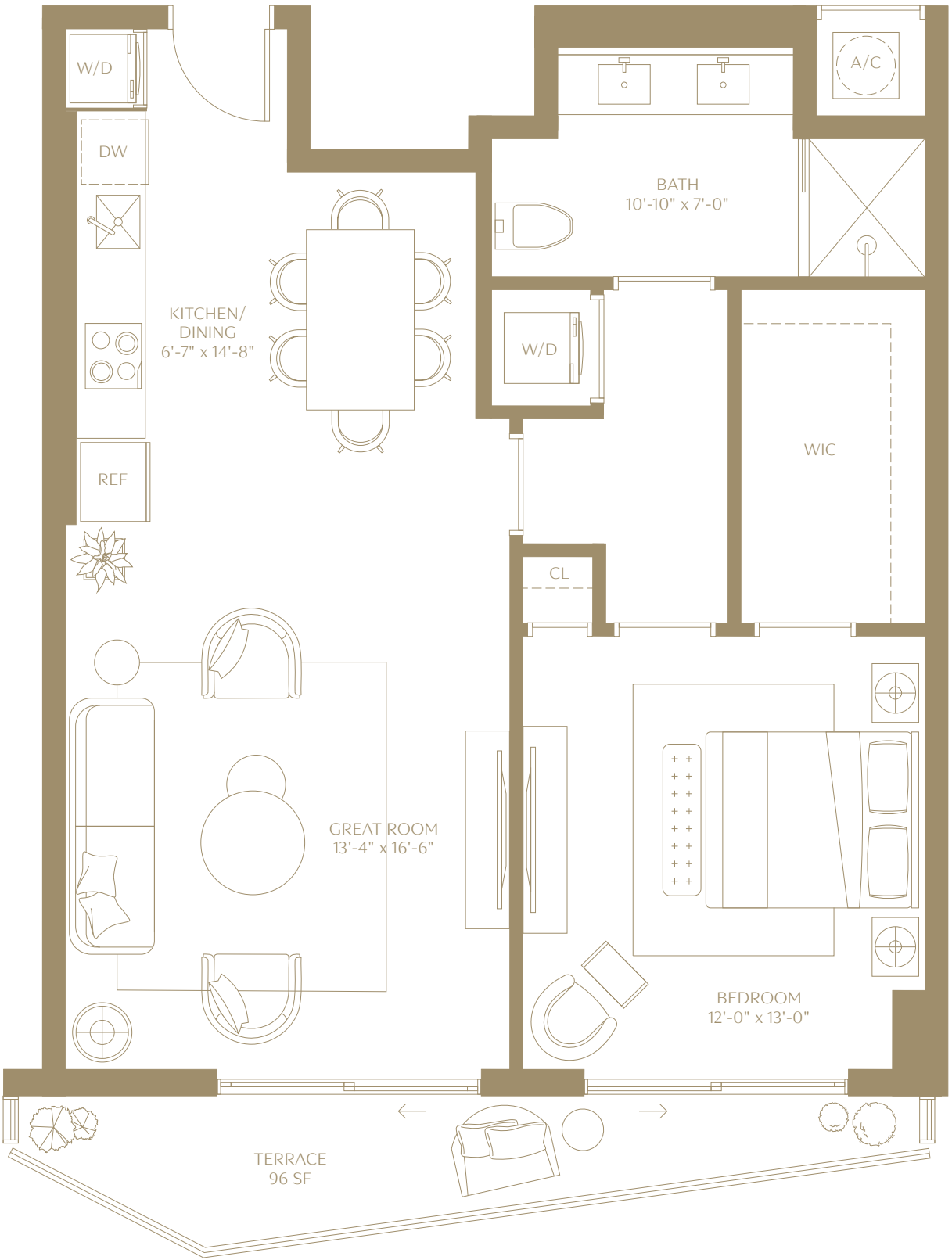
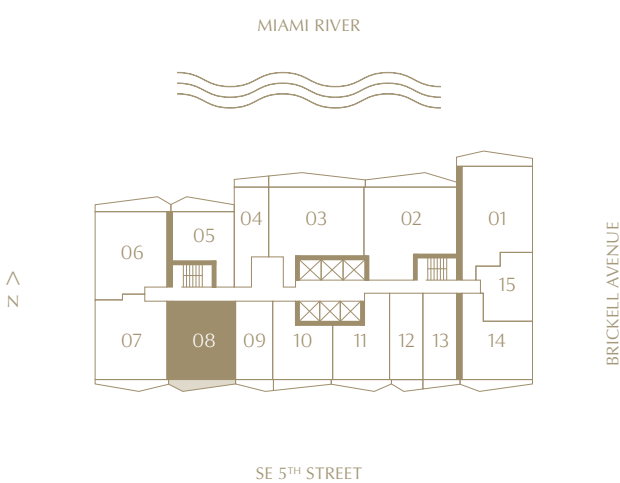
Residence 08

1 BEDROOM | 1 BATHROOM
LEVELS 15 TO 42
SOUTH EXPOSURE

INTERIOR
862 SQ. FT. | 80.08 SQM

TERRACE
96 SQ. FT. | 8.92 SQM

TOTAL
958 SQ. FT. | 89 SQM



ⓘ The dimensions stated for this floor plan are approximate because there are various recognized methods for calculating the square footage of a unit. The square footage stated here is calculated from the exterior boundaries of the exterior walls to the centerline of interior demising walls without deductions for cutouts, curves, or architectural features. This method typically results in quoted dimensions greater than the dimensions that would be determined by using other accepted methods. The definition of "Unit" and the calculation method to be relied upon is set forth by 444 BRICKELL TWO, LLC (the "Developer") in Developer's prospectus which method may result in a square footage calculation less than the result of the calculation method used here. VICEROY BRANDS, LLC owns the mark and name Viceroy®. The Developer is permitted to use the name and logo of The Related Group® and Viceroy® pursuant to license agreements which are valid unless terminated or expired; neither The Related Group nor Viceroy Brands, LLC are the Developer. Consult the Developer's prospectus to learn what is included with Unit purchase and to understand Unit dimensions. 2024 © 444 BRICKELL TWO, LLC with all rights reserved.

VICEROY BRICKELL
THE RESIDENCES

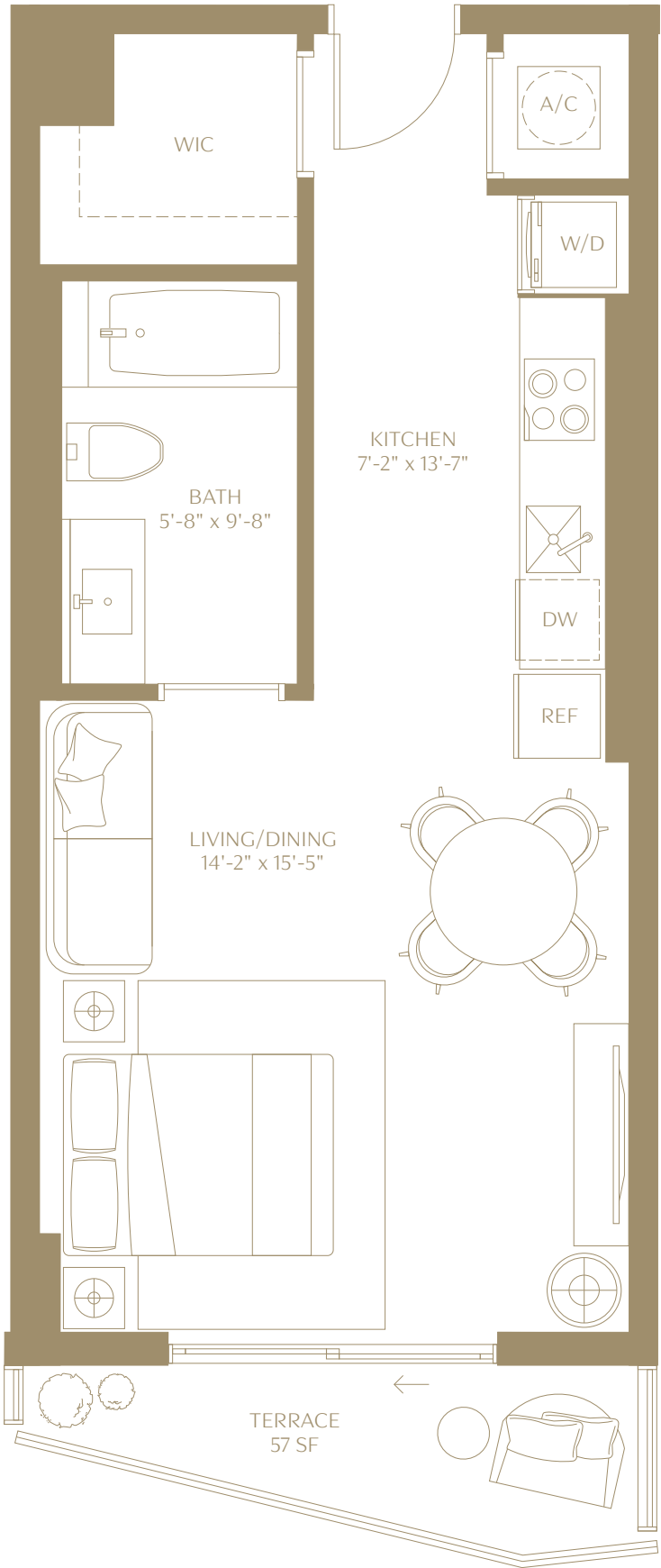
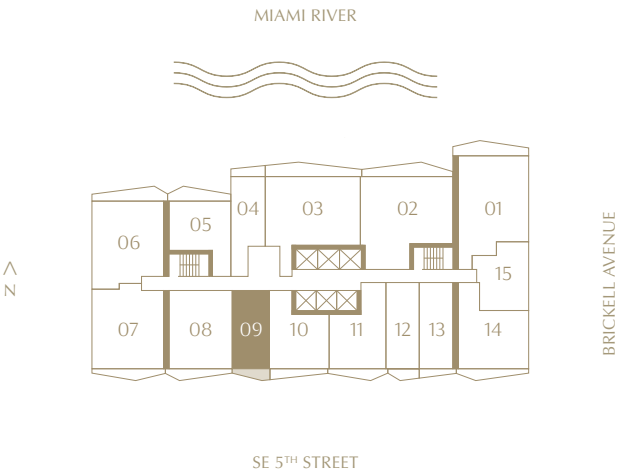
Residence 09

STUDIO | 1 BATHROOM
LEVELS 15 TO 42
SOUTH EXPOSURE

INTERIOR
485 SQ. FT. | 45.06 SQM

TERRACE
57 SQ. FT. | 5.30 SQM

TOTAL
542 SQ. FT. | 50.35 SQM



ⓘ The dimensions stated for this floor plan are approximate because there are various recognized methods for calculating the square footage of a unit. The square footage stated here is calculated from the exterior boundaries of the exterior walls to the centerline of interior demising walls without deductions for cutouts, curves, or architectural features. This method typically results in quoted dimensions greater than the dimensions that would be determined by using other accepted methods. The definition of "Unit" and the calculation method to be relied upon is set forth by 444 BRICKELL TWO, LLC (the "Developer") in Developer's prospectus which method may result in a square footage calculation less than the result of the calculation method used here. VICEROY BRANDS, LLC owns the mark and name Viceroy®. The Developer is permitted to use the name and logo of The Related Group® and Viceroy® pursuant to license agreements which are valid unless terminated or expired; neither The Related Group nor Viceroy Brands, LLC are the Developer. Consult the Developer's prospectus to learn what is included with Unit purchase and to understand Unit dimensions. 2024 © 444 BRICKELL TWO, LLC with all rights reserved.

VICEROY BRICKELL

THE RESIDENCES

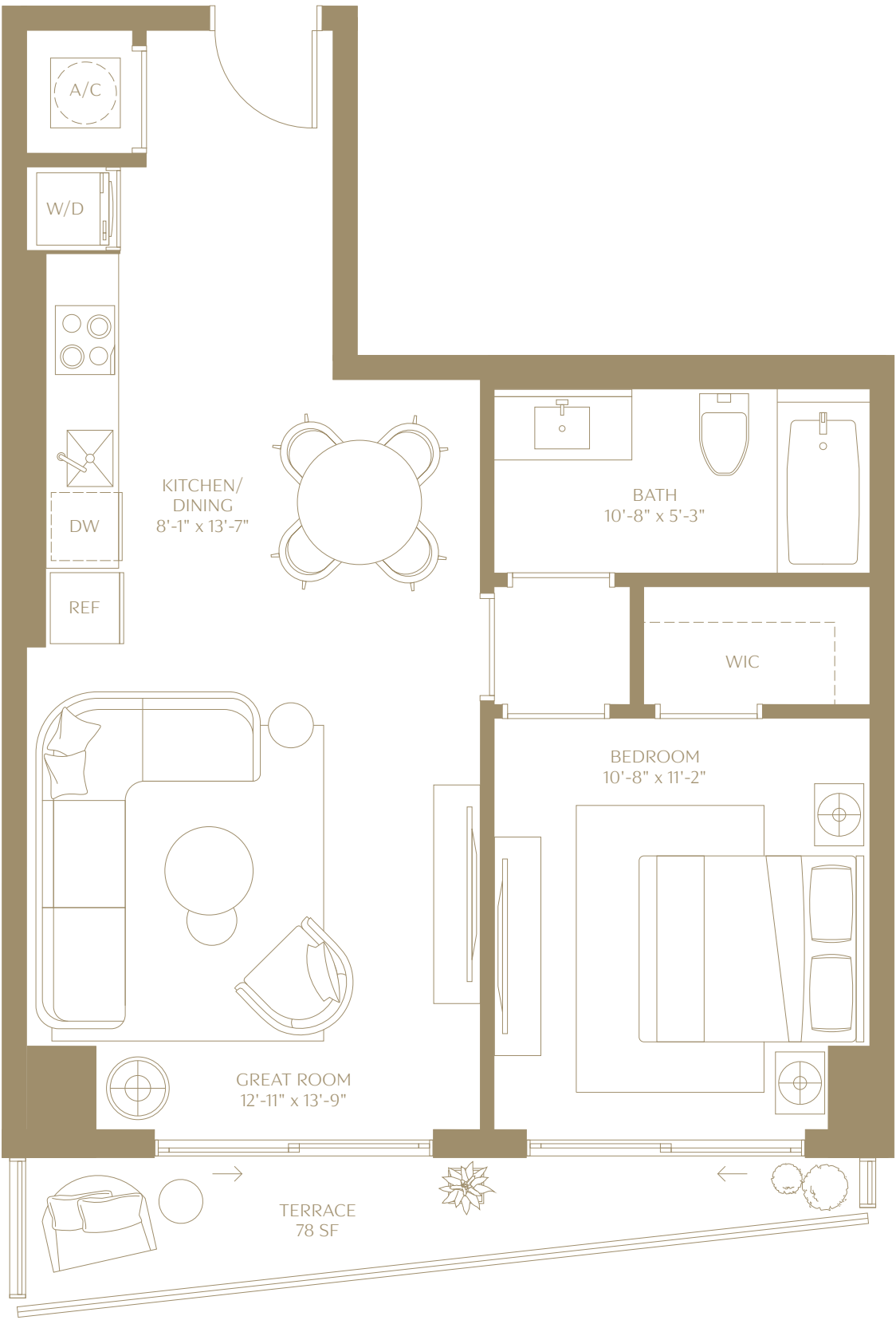
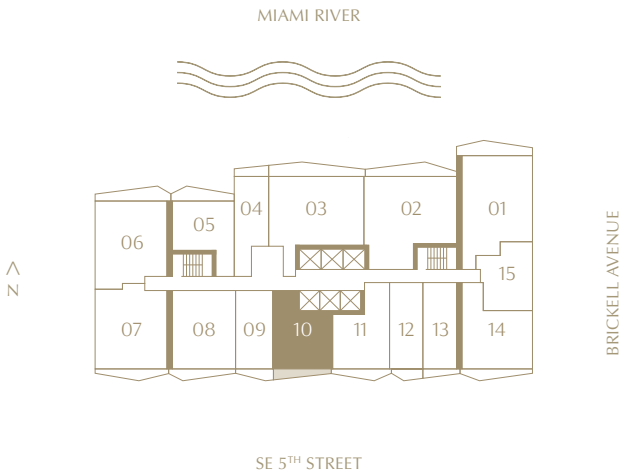
Residence 10

1 BEDROOM | 1 BATHROOM
LEVELS 15 TO 42
SOUTH EXPOSURE

INTERIOR
686 SQ. FT. | 63.73 SQM

TERRACE
78 SQ. FT. | 7.25 SQM

TOTAL
764 SQ. FT. | 70.98 SQM



VICEROY BRICKELL

THE RESIDENCES

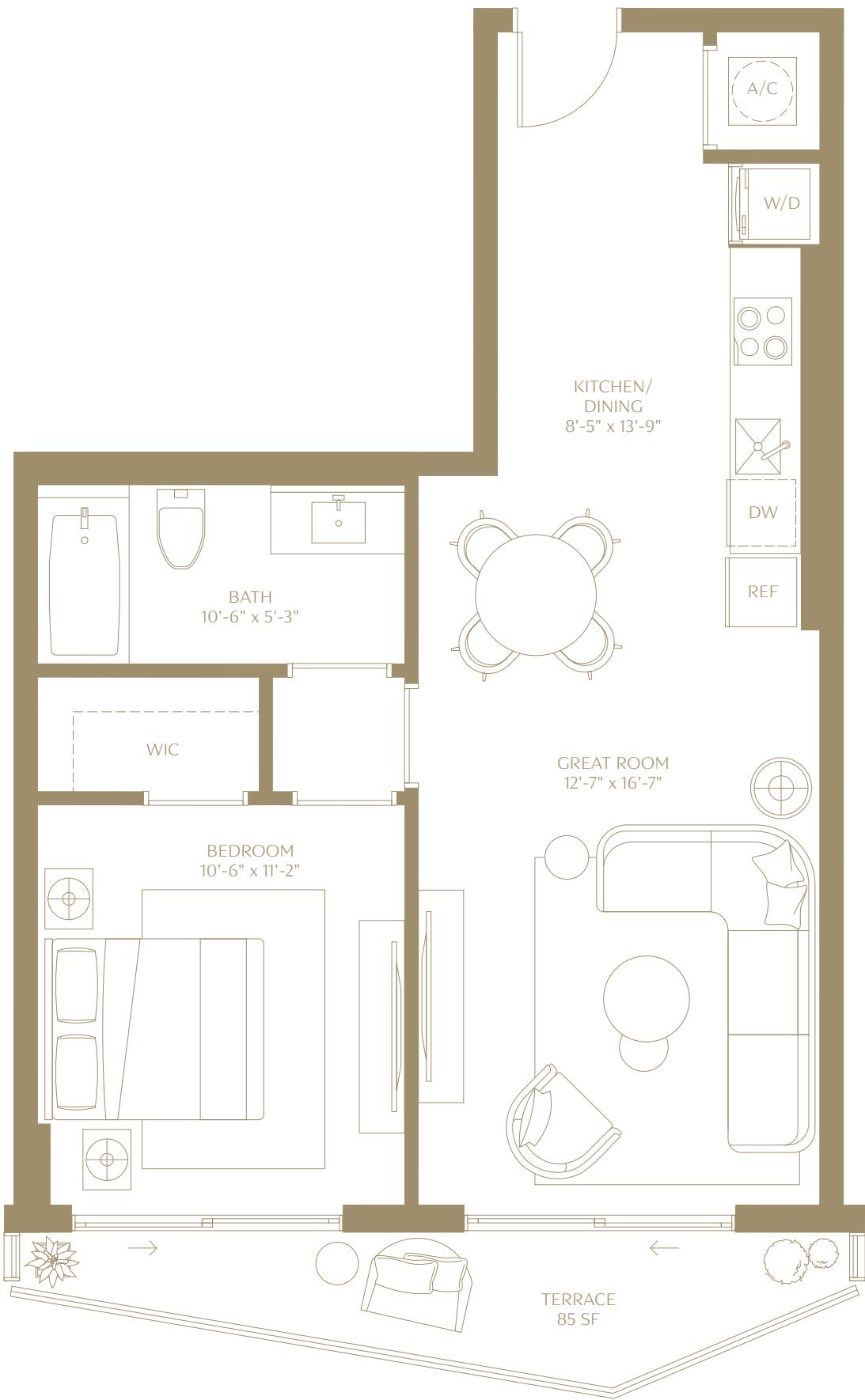
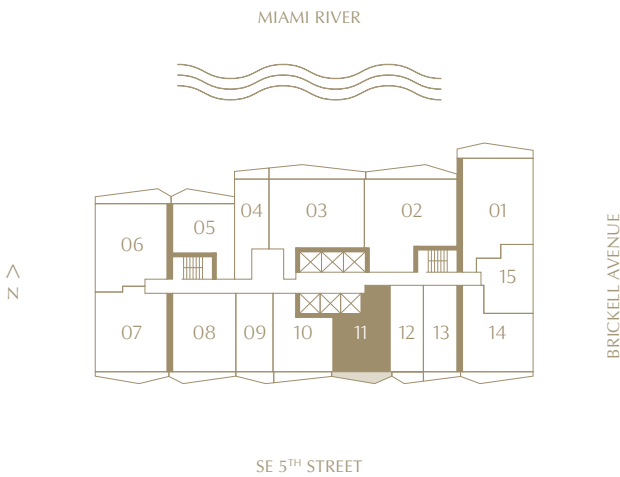
Residence 11

1 BEDROOM | 1 BATHROOM
LEVELS 15 TO 42
SOUTH EXPOSURE

INTERIOR
699 SQ. FT. | 64.94 SQM

TERRACE
85 SQ. FT. | 7.90 SQM

TOTAL
784 SQ. FT. | 72.84 SQM



ⓘ The dimensions stated for this floor plan are approximate because there are various recognized methods for calculating the square footage of a unit. The square footage stated here is calculated from the exterior boundaries of the exterior walls to the centerline of interior demising walls without deductions for cutouts, curves, or architectural features. This method typically results in quoted dimensions greater than the dimensions that would be determined by using other accepted methods. The definition of "Unit" and the calculation method to be relied upon is set forth by 444 BRICKELL TWO, LLC (the "Developer") in Developer's prospectus which method may result in a square footage calculation less than the result of the calculation method used here. VICEROY BRANDS, LLC owns the mark and name Viceroy®. The Developer is permitted to use the name and logo of The Related Group® and Viceroy® pursuant to license agreements which are valid unless terminated or expired; neither The Related Group nor Viceroy Brands, LLC are the Developer. Consult the Developer's prospectus to learn what is included with Unit purchase and to understand Unit dimensions. 2024 © 444 BRICKELL TWO, LLC with all rights reserved.

VICEROY BRICKELL

THE RESIDENCES

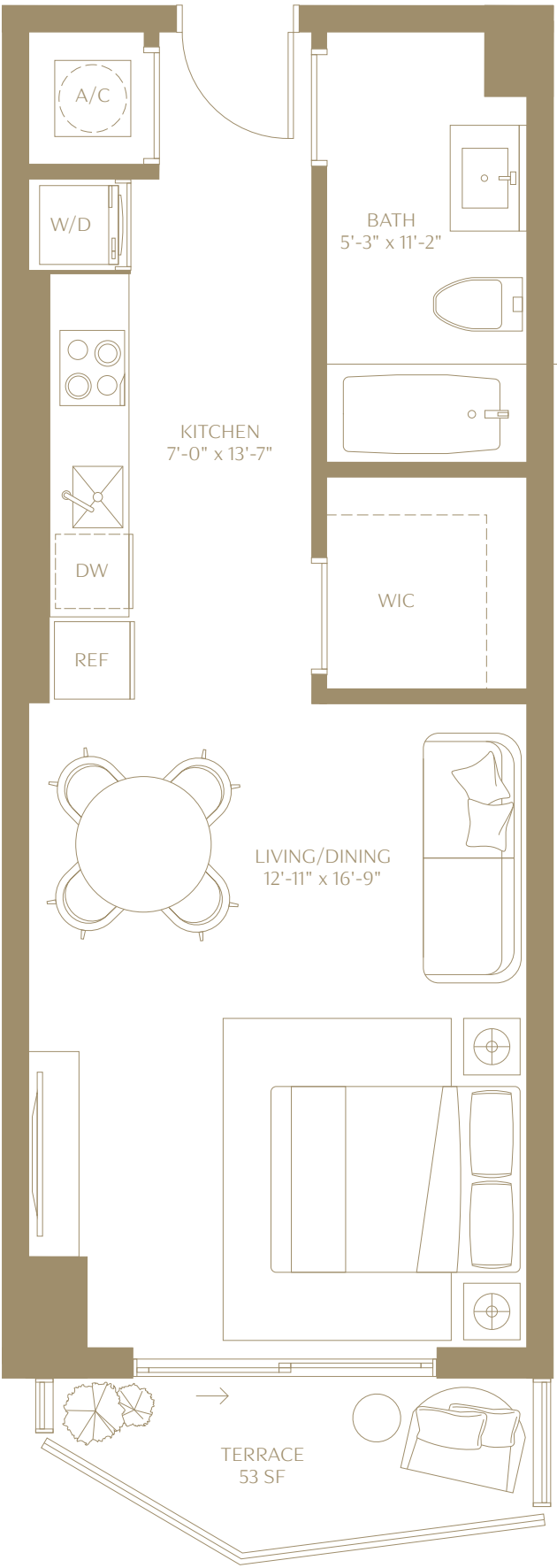
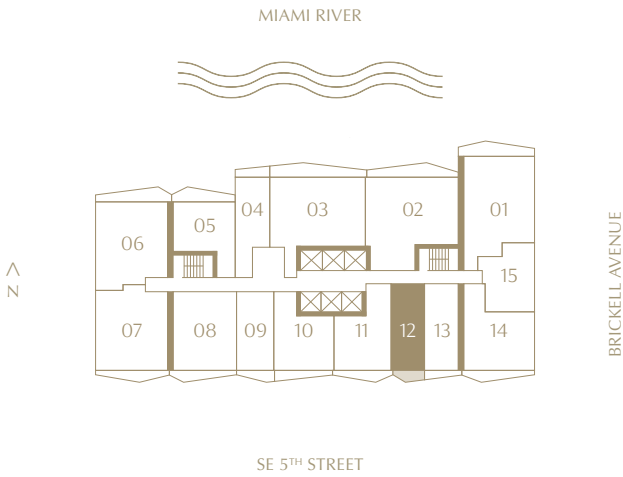
Residence 12

STUDIO | 1 BATHROOM
LEVELS 15 TO 42
SOUTH EXPOSURE

INTERIOR
489 SQ. FT. | 45.43 SQM

TERRACE
53 SQ. FT. | 4.92 SQM

TOTAL
542 SQ. FT. | 50.35 SQM



ⓘ The dimensions stated for this floor plan are approximate because there are various recognized methods for calculating the square footage of a unit. The square footage stated here is calculated from the exterior boundaries of the exterior walls to the centerline of interior demising walls without deductions for cutouts, curves, or architectural features. This method typically results in quoted dimensions greater than the dimensions that would be determined by using other accepted methods. The definition of "Unit" and the calculation method to be relied upon is set forth by 444 BRICKELL TWO, LLC (the "Developer") in Developer's prospectus which method may result in a square footage calculation less than the result of the calculation method used here. VICEROY BRANDS, LLC owns the mark and name Viceroy®. The Developer is permitted to use the name and logo of The Related Group® and Viceroy® pursuant to license agreements which are valid unless terminated or expired; neither The Related Group nor Viceroy Brands, LLC are the Developer. Consult the Developer's prospectus to learn what is included with Unit purchase and to understand Unit dimensions. 2024 © 444 BRICKELL TWO, LLC with all rights reserved.

VICEROY BRICKELL
THE RESIDENCES

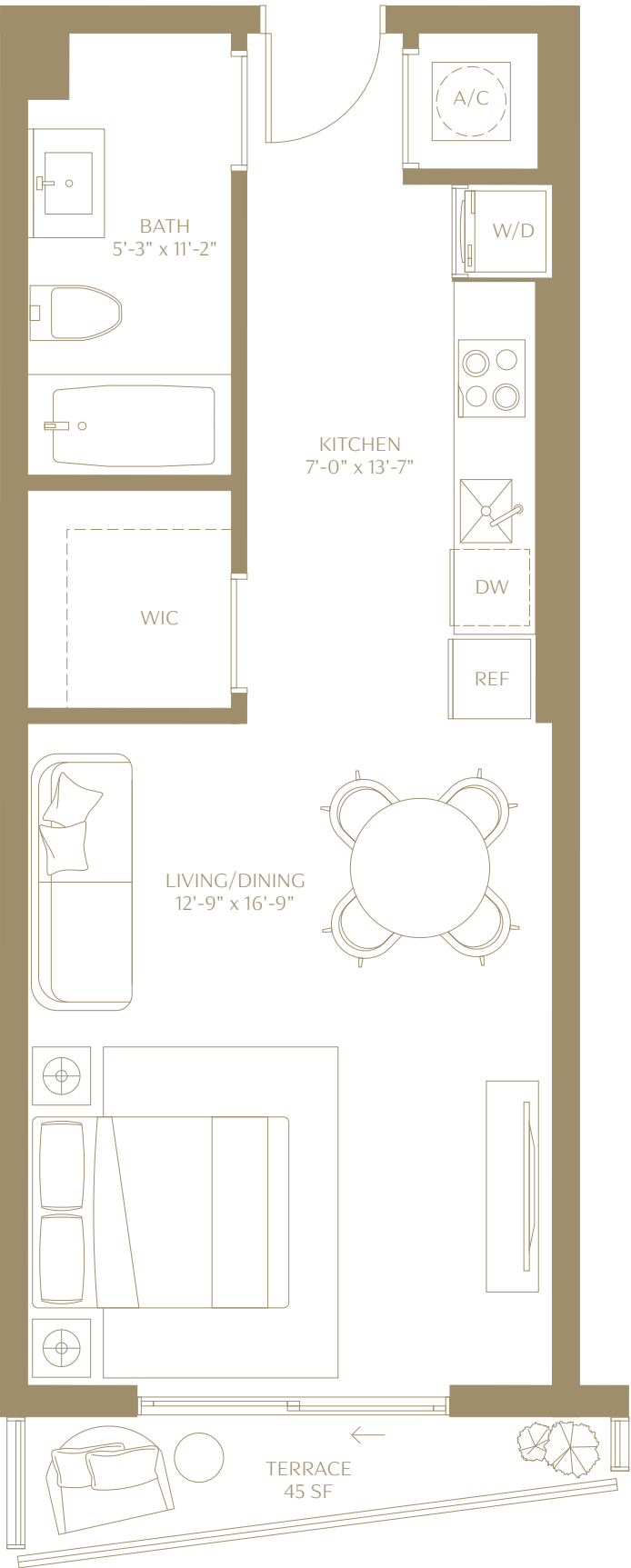
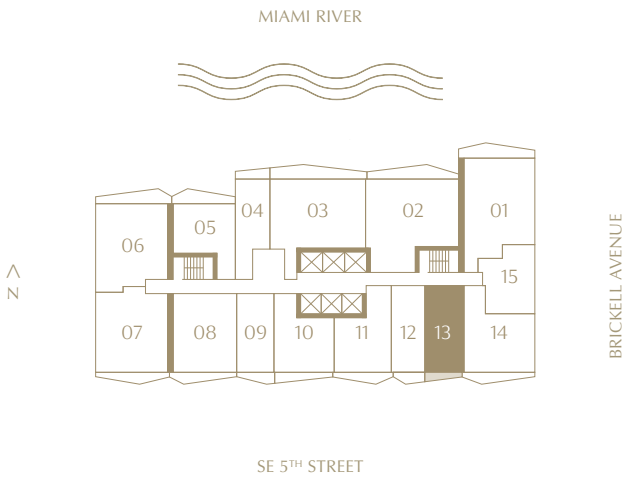
Residence 13

STUDIO | 1 BATHROOM
LEVELS 15 TO 42
SOUTH EXPOSURE

INTERIOR
539 SQ. FT. | 50.07 SQM

TERRACE
45 SQ. FT. | 4.18 SQM

TOTAL
584 SQ. FT. | 54.26 SQM



ⓘ The dimensions stated for this floor plan are approximate because there are various recognized methods for calculating the square footage of a unit. The square footage stated here is calculated from the exterior boundaries of the exterior walls to the centerline of interior demising walls without deductions for cutouts, curves, or architectural features. This method typically results in quoted dimensions greater than the dimensions that would be determined by using other accepted methods. The definition of "Unit" and the calculation method to be relied upon is set forth by 444 BRICKELL TWO, LLC (the "Developer") in Developer's prospectus which method may result in a square footage calculation less than the result of the calculation method used here. VICEROY BRANDS, LLC owns the mark and name Viceroy®. The Developer is permitted to use the name and logo of The Related Group® and Viceroy® pursuant to license agreements which are valid unless terminated or expired; neither The Related Group nor Viceroy Brands, LLC are the Developer. Consult the Developer's prospectus to learn what is included with Unit purchase and to understand Unit dimensions. 2024 © 444 BRICKELL TWO, LLC with all rights reserved.

VICEROY BRICKELL
THE RESIDENCES

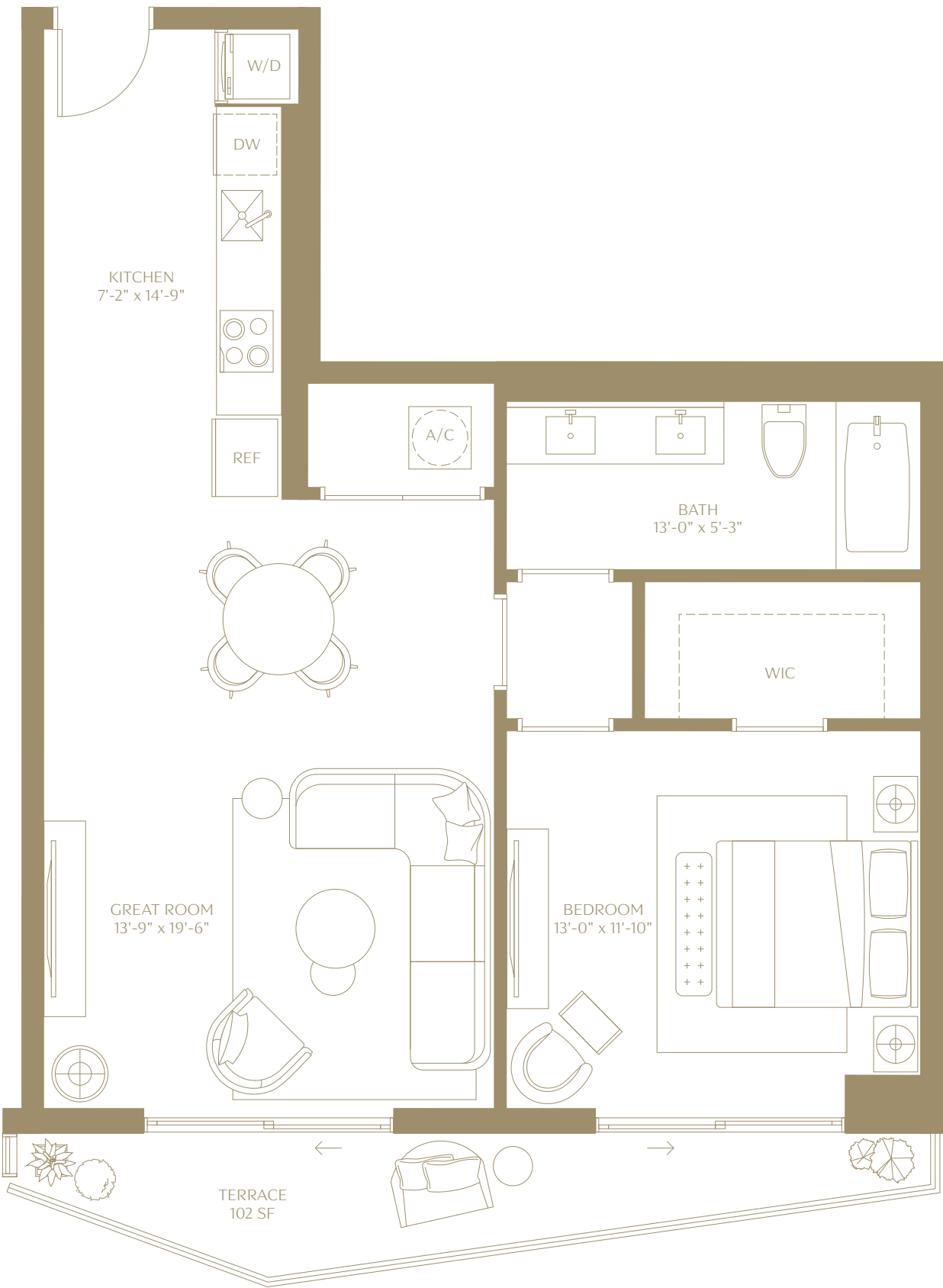
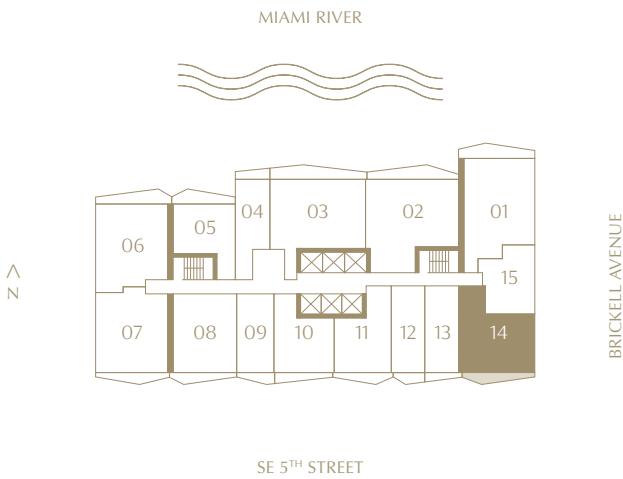
Residence 14

1 BEDROOM | 1 BATHROOM
LEVELS 15 TO 42
SOUTHEAST EXPOSURE

INTERIOR
833 SQ. FT. | 77.39 SQM

TERRACE
102 SQ. FT. | 9.48 SQM

TOTAL
935 SQ. FT. | 86.86 SQM



ⓘ The dimensions stated for this floor plan are approximate because there are various recognized methods for calculating the square footage of a unit. The square footage stated here is calculated from the exterior boundaries of the exterior walls to the centerline of interior demising walls without deductions for cutouts, curves, or architectural features. This method typically results in quoted dimensions greater than the dimensions that would be determined by using other accepted methods. The definition of "Unit" and the calculation method to be relied upon is set forth by 444 BRICKELL TWO, LLC (the "Developer") in Developer's prospectus which method may result in a square footage calculation less than the result of the calculation method used here. VICEROY BRANDS, LLC owns the mark and name Viceroy®. The Developer is permitted to use the name and logo of The Related Group® and Viceroy® pursuant to license agreements which are valid unless terminated or expired; neither The Related Group nor Viceroy Brands, LLC are the Developer. Consult the Developer's prospectus to learn what is included with Unit purchase and to understand Unit dimensions. 2024 © 444 BRICKELL TWO, LLC with all rights reserved.

VICEROY BRICKELL
THE RESIDENCES

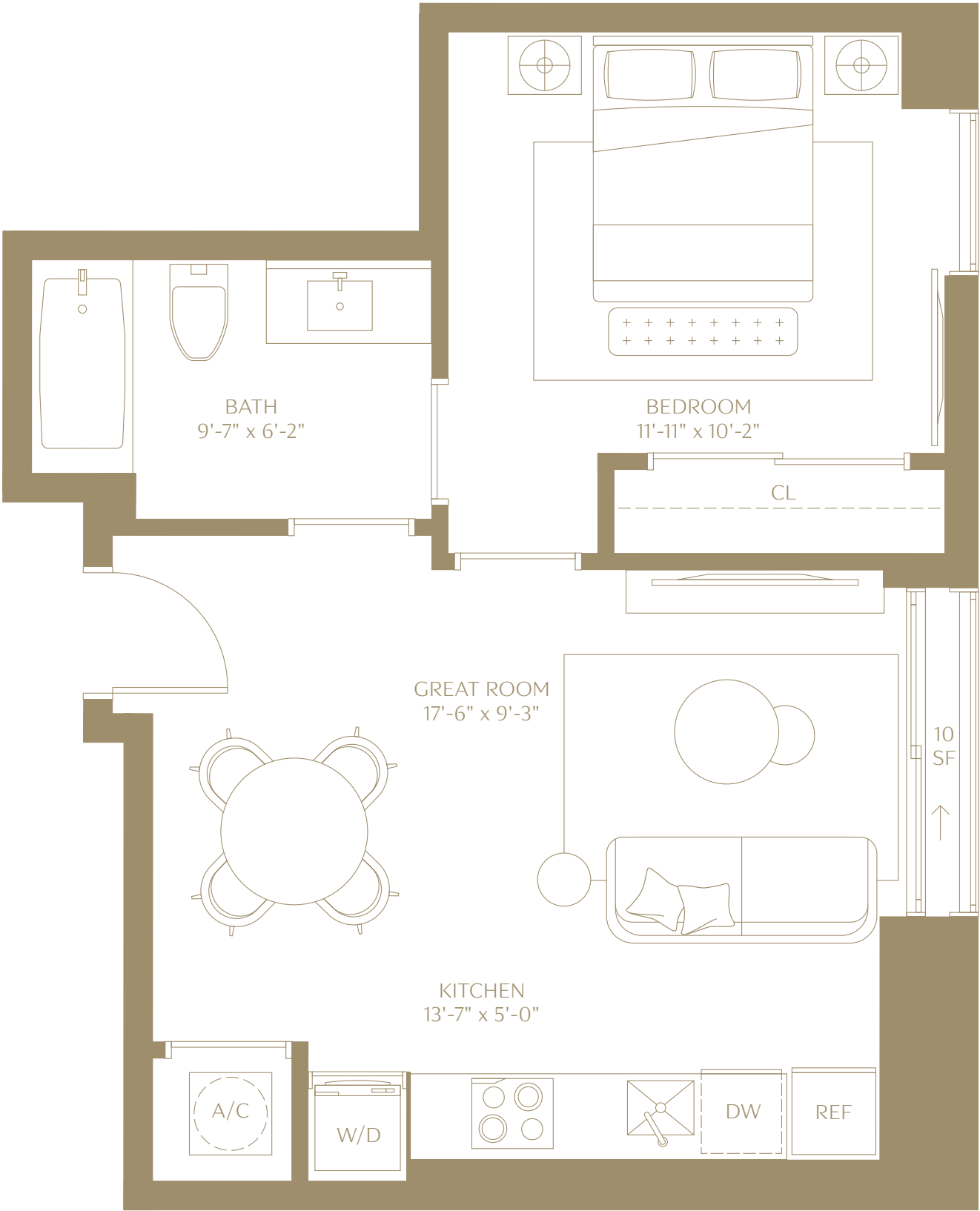
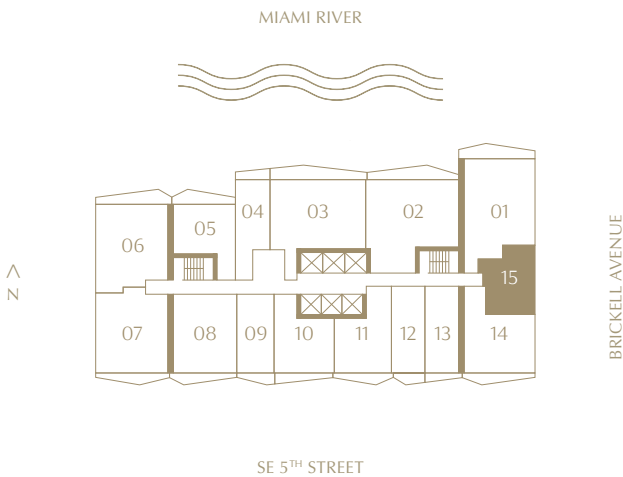
Residence 15

1 BEDROOM | 1 BATHROOM
LEVELS 15 TO 42
EAST EXPOSURE

INTERIOR
551 SQ. FT. | 51.19 SQM

TERRACE
10 SQ. FT. | 0.92 SQM

TOTAL
561 SQ. FT. | 52.11 SQM



ⓘ The dimensions stated for this floor plan are approximate because there are various recognized methods for calculating the square footage of a unit. The square footage stated here is calculated from the exterior boundaries of the exterior walls to the centerline of interior demising walls without deductions for cutouts, curves, or architectural features. This method typically results in quoted dimensions greater than the dimensions that would be determined by using other accepted methods. The definition of "Unit" and the calculation method to be relied upon is set forth by 444 BRICKELL TWO, LLC (the "Developer") in Developer's prospectus which method may result in a square footage calculation less than the result of the calculation method used here. VICEROY BRANDS, LLC owns the mark and name Viceroy®. The Developer is permitted to use the name and logo of The Related Group® and Viceroy® pursuant to license agreements which are valid unless terminated or expired; neither The Related Group nor Viceroy Brands, LLC are the Developer. Consult the Developer's prospectus to learn what is included with Unit purchase and to understand Unit dimensions. 2024 © 444 BRICKELL TWO, LLC with all rights reserved.

