

RESIDENCE 01



Level 4-8

2 Bedroom

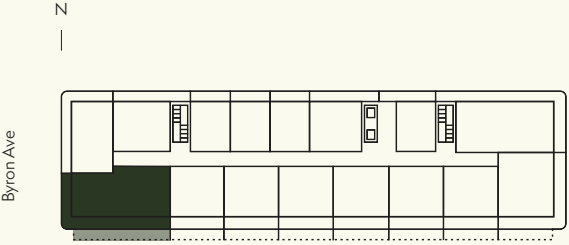
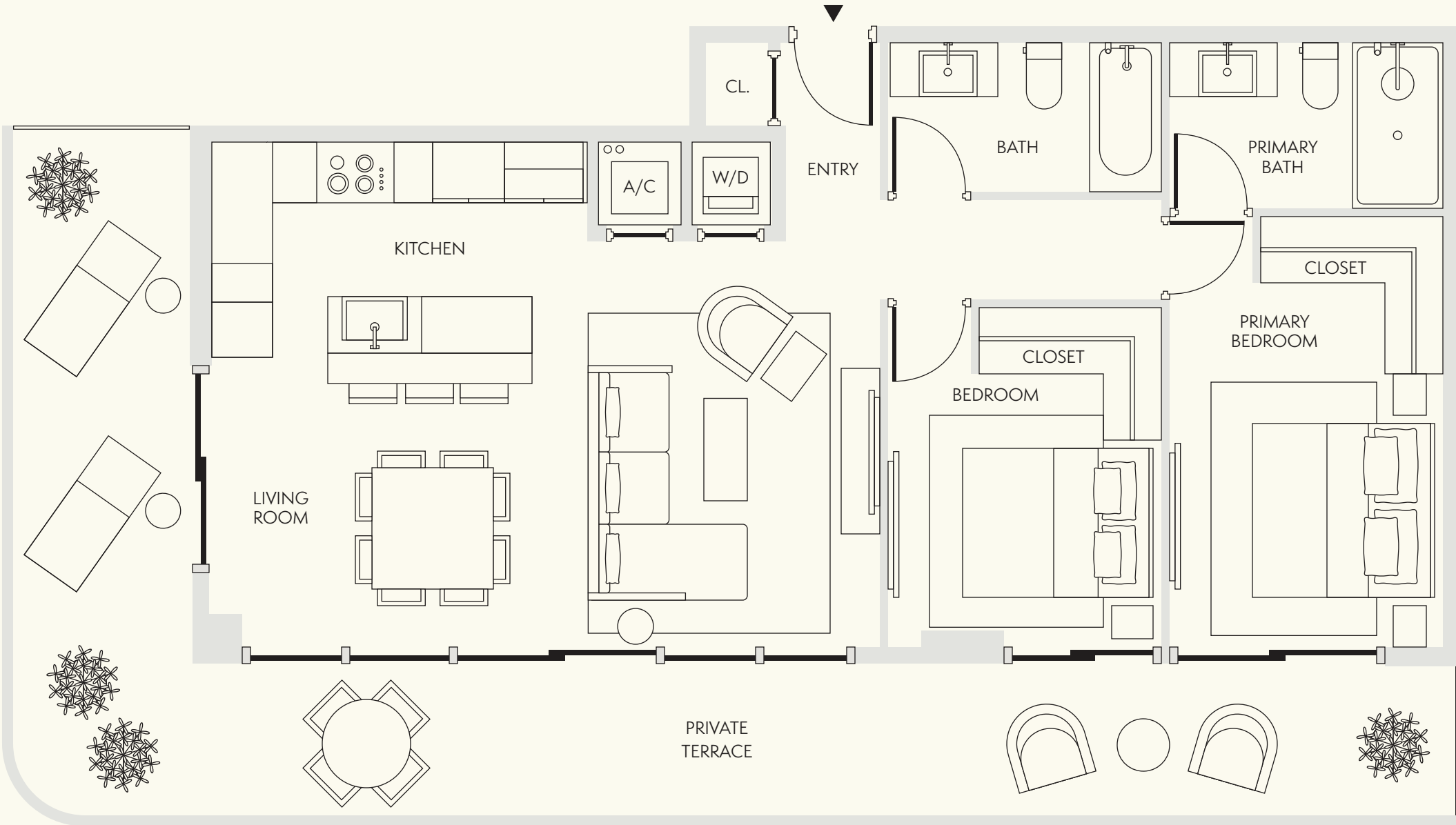
2 Bathroom

Interior
1,019 SF / 95 SM

Exterior
443-701 SF / 41-65 SM

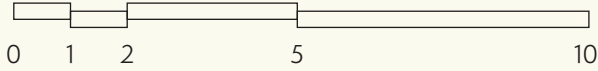
Total
1,462-1,720 SF / 136-160 SM

Dimensions
45'-4" x 22'-4"



Level 4-8
..... Extended balcony on select floors

Stated dimensions are measured to the exterior boundaries of the exterior walls and the centerline of interior demising walls and in fact vary from the dimensions that would be determined by using the description and definition of the "Unit" set forth in the Declaration (which generally only includes the interior airspace between the perimeter walls and excludes interior structural components). For the precise Unit boundaries, see Section 3.2 of the Declaration. The area of the Unit, determined in accordance with these defined Unit boundaries, is set forth in the Declaration. Note that measurements of rooms set forth on this floor plan are generally taken at the greatest points of each given room (as if the room were a perfect rectangle), without regard for any cutouts. Accordingly, the area of the actual room will typically be smaller than the product obtained by multiplying the stated length times width. All dimensions are approximate and may vary with actual construction, and all floor plans and development plans are subject to change. All depictions of furniture, appliances, counters and other matters of detail, including, without limitation, items of finish and decoration, are conceptual only and are not necessarily included in each Unit. Said items are only included if and to the extent provided in your purchase agreement.



NOT TO SCALE

RESIDENCE 02



Level 4-9

1 Bedroom

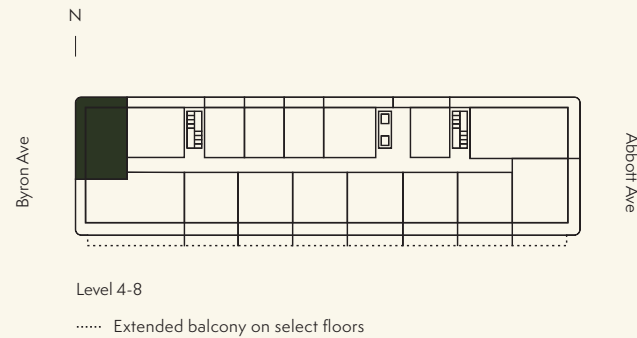
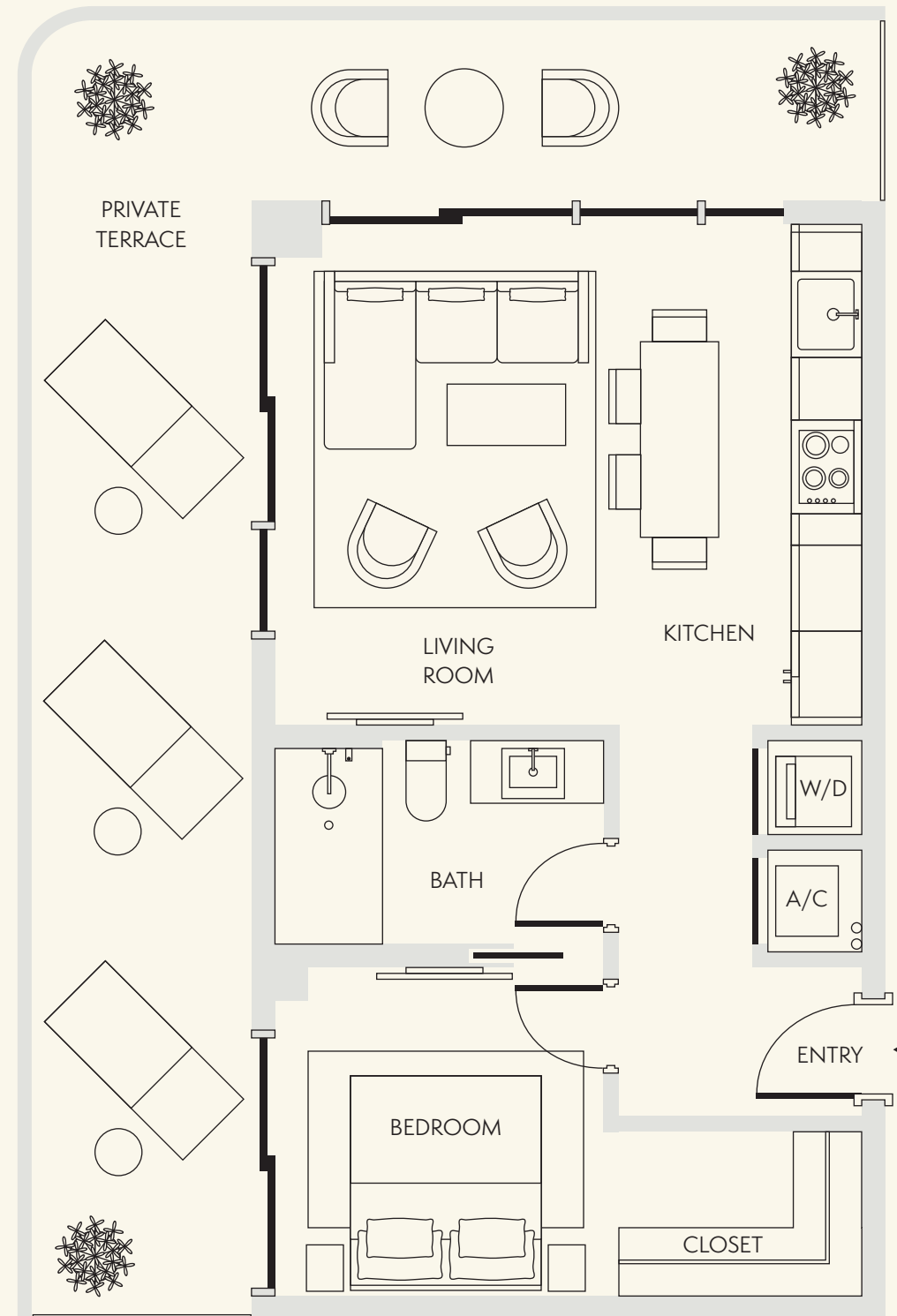
1 Bathroom

Interior
618 SF / 57 SM

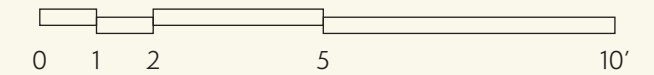
Exterior
332 SF / 31 SM

Total
950 SF / 88 SM

Dimensions
17'-5" x 32'-6"



Stated dimensions are measured to the exterior boundaries of the exterior walls and the centerline of interior demising walls and in fact vary from the dimensions that would be determined by using the description and definition of the "Unit" set forth in the Declaration (which generally only includes the interior airspace between the perimeter walls and excludes interior structural components). For the precise Unit boundaries, see Section 3.2 of the Declaration. The area of the Unit, determined in accordance with these defined Unit boundaries, is set forth in the Declaration. Note that measurements of rooms set forth on this floor plan are generally taken at the greatest points of each given room (as if the room were a perfect rectangle), without regard for any cutouts. Accordingly, the area of the actual room will typically be smaller than the product obtained by multiplying the stated length times width. All dimensions are approximate and may vary with actual construction, and all floor plans and development plans are subject to change. All depictions of furniture, appliances, counters and other matters of detail, including, without limitation, items of finish and decoration, are conceptual only and are not necessarily included in each Unit. Said items are only included if and to the extent provided in your purchase agreement.



NOT TO SCALE

RESIDENCE 11



Level 4-9

1 Bedroom

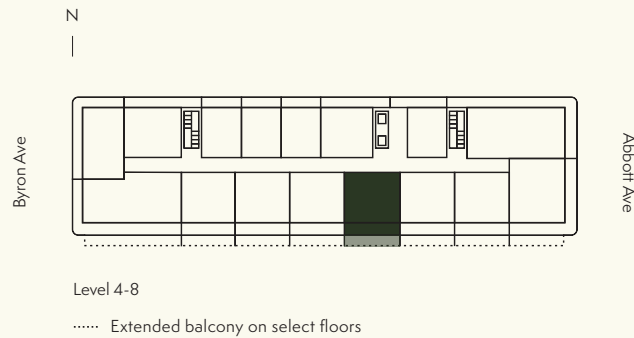
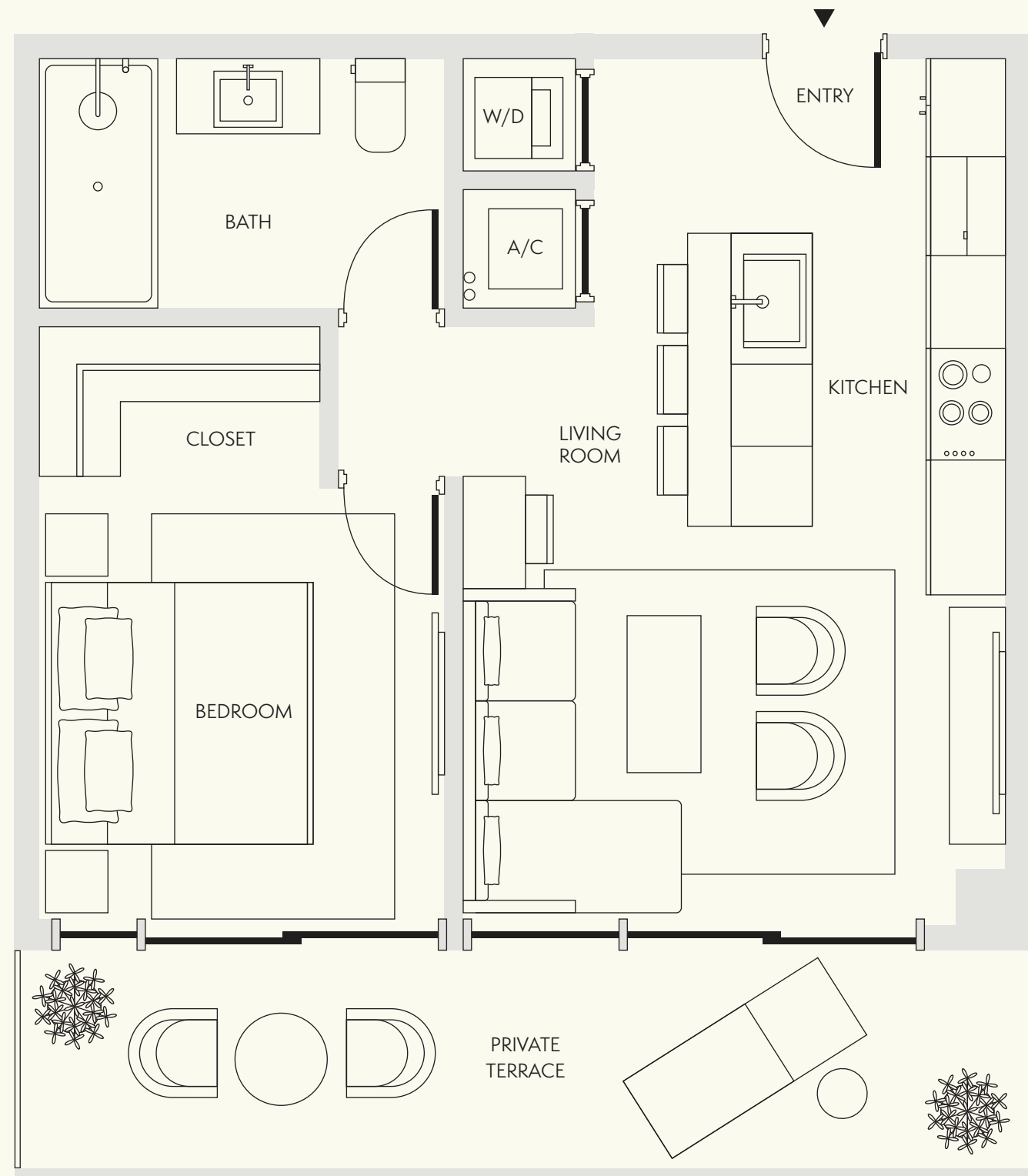
1 Bathroom

Interior
615 SF / 57 SM

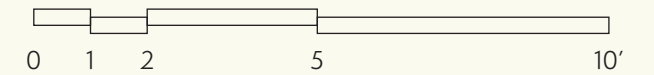
Exterior
161-314 SF / 15-29 SM

Total
776-929 SF / 72-86 SM

Dimensions
25'-5" x 22'-4"



Stated dimensions are measured to the exterior boundaries of the exterior walls and the centerline of interior demising walls and in fact vary from the dimensions that would be determined by using the description and definition of the "Unit" set forth in the Declaration (which generally only includes the interior airspace between the perimeter walls and excludes interior structural components). For the precise Unit boundaries, see Section 3.2 of the Declaration. The area of the Unit, determined in accordance with these defined Unit boundaries, is set forth in the Declaration. Note that measurements of rooms set forth on this floor plan are generally taken at the greatest points of each given room (as if the room were a perfect rectangle), without regard for any cutouts. Accordingly, the area of the actual room will typically be smaller than the product obtained by multiplying the stated length times width. All dimensions are approximate and may vary with actual construction, and all floor plans and development plans are subject to change. All depictions of furniture, appliances, counters and other matters of detail, including, without limitation, items of finish and decoration, are conceptual only and are not necessarily included in each Unit. Said items are only included if and to the extent provided in your purchase agreement.



NOT TO SCALE

RESIDENCE 12



Levels 4-8

1 Bedroom

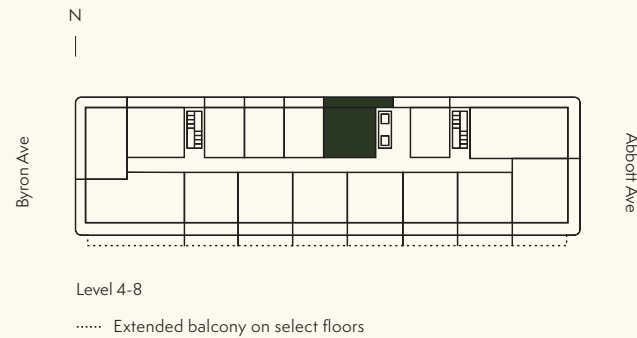
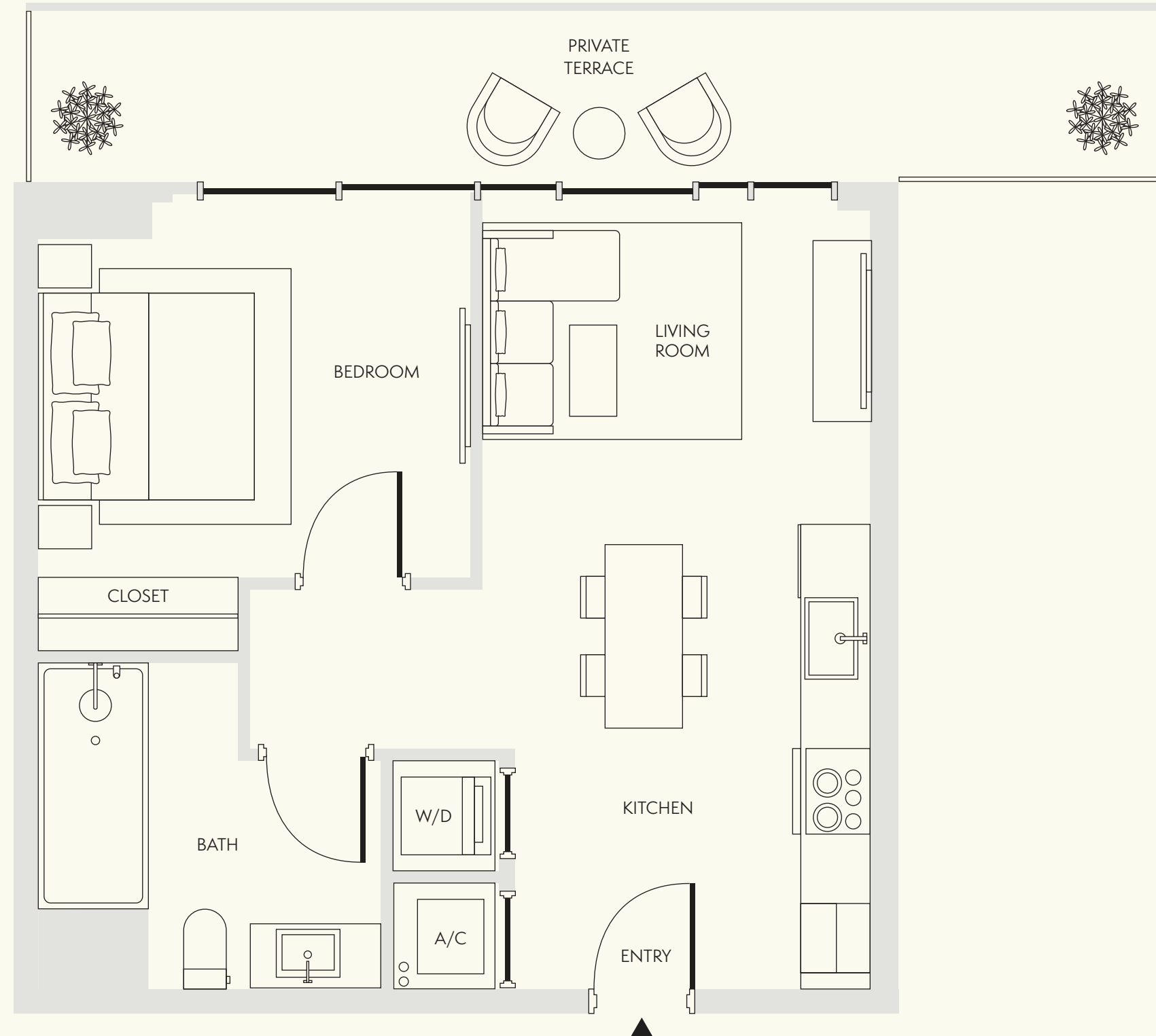
1 Bathroom

Interior
571 SF / 53 SM

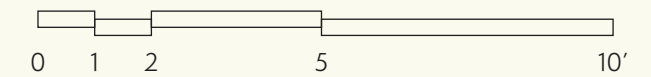
Exterior
167 SF / 16 SM

Total
738 SF / 69 SM

Dimensions
23'-9" x 22'-4"



Stated dimensions are measured to the exterior boundaries of the exterior walls and the centerline of interior demising walls and in fact vary from the dimensions that would be determined by using the description and definition of the "Unit" set forth in the Declaration (which generally only includes the interior airspace between the perimeter walls and excludes interior structural components). For the precise Unit boundaries, see Section 3.2 of the Declaration. The area of the Unit, determined in accordance with these defined Unit boundaries, is set forth in the Declaration. Note that measurements of rooms set forth on this floor plan are generally taken at the greatest points of each given room (as if the room were a perfect rectangle), without regard for any cutouts. Accordingly, the area of the actual room will typically be smaller than the product obtained by multiplying the stated length times width. All dimensions are approximate and may vary with actual construction, and all floor plans and development plans are subject to change. All depictions of furniture, appliances, counters and other matters of detail, including, without limitation, items of finish and decoration, are conceptual only and are not necessarily included in each Unit. Said items are only included if and to the extent provided in your purchase agreement.



NOT TO SCALE

RESIDENCE 14



Level 4-9

* Residences 6, 8, and 10 have a similar floor plan

Junior One Bedroom

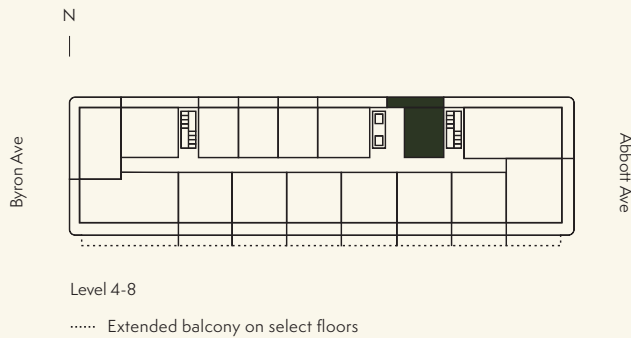
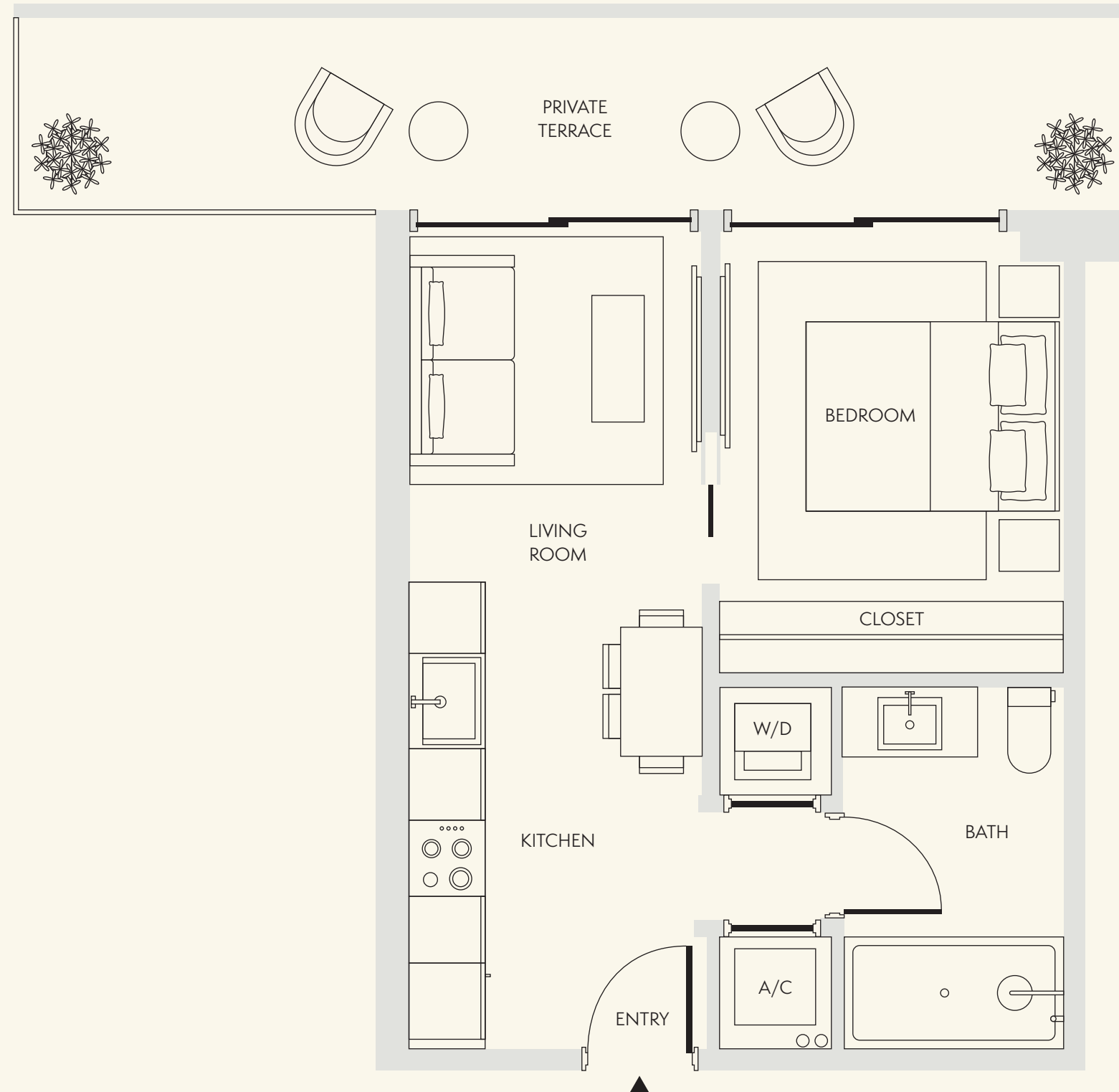
1 Bathroom

Interior
440 SF / 41 SM

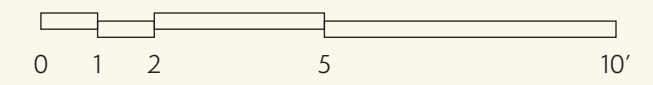
Exterior
139 SF / 13 SM

Total
579 SF / 54 SM

Dimensions
17'-10" x 22'-4"



Stated dimensions are measured to the exterior boundaries of the exterior walls and the centerline of interior demising walls and in fact vary from the dimensions that would be determined by using the description and definition of the "Unit" set forth in the Declaration (which generally only includes the interior airspace between the perimeter walls and excludes interior structural components). For the precise Unit boundaries, see Section 3.2 of the Declaration. The area of the Unit, determined in accordance with these defined Unit boundaries, is set forth in the Declaration. Note that measurements of rooms set forth on this floor plan are generally taken at the greatest points of each given room (as if the room were a perfect rectangle), without regard for any cutouts. Accordingly, the area of the actual room will typically be smaller than the product obtained by multiplying the stated length times width. All dimensions are approximate and may vary with actual construction, and all floor plans and development plans are subject to change. All depictions of furniture, appliances, counters and other matters of detail, including, without limitation, items of finish and decoration, are conceptual only and are not necessarily included in each Unit. Said items are only included if and to the extent provided in your purchase agreement.



NOT TO SCALE

RESIDENCE 15

Level 4-9

1 Bedroom

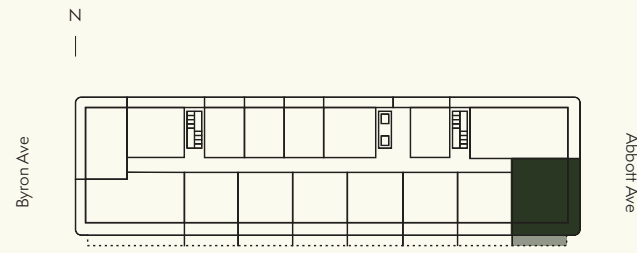
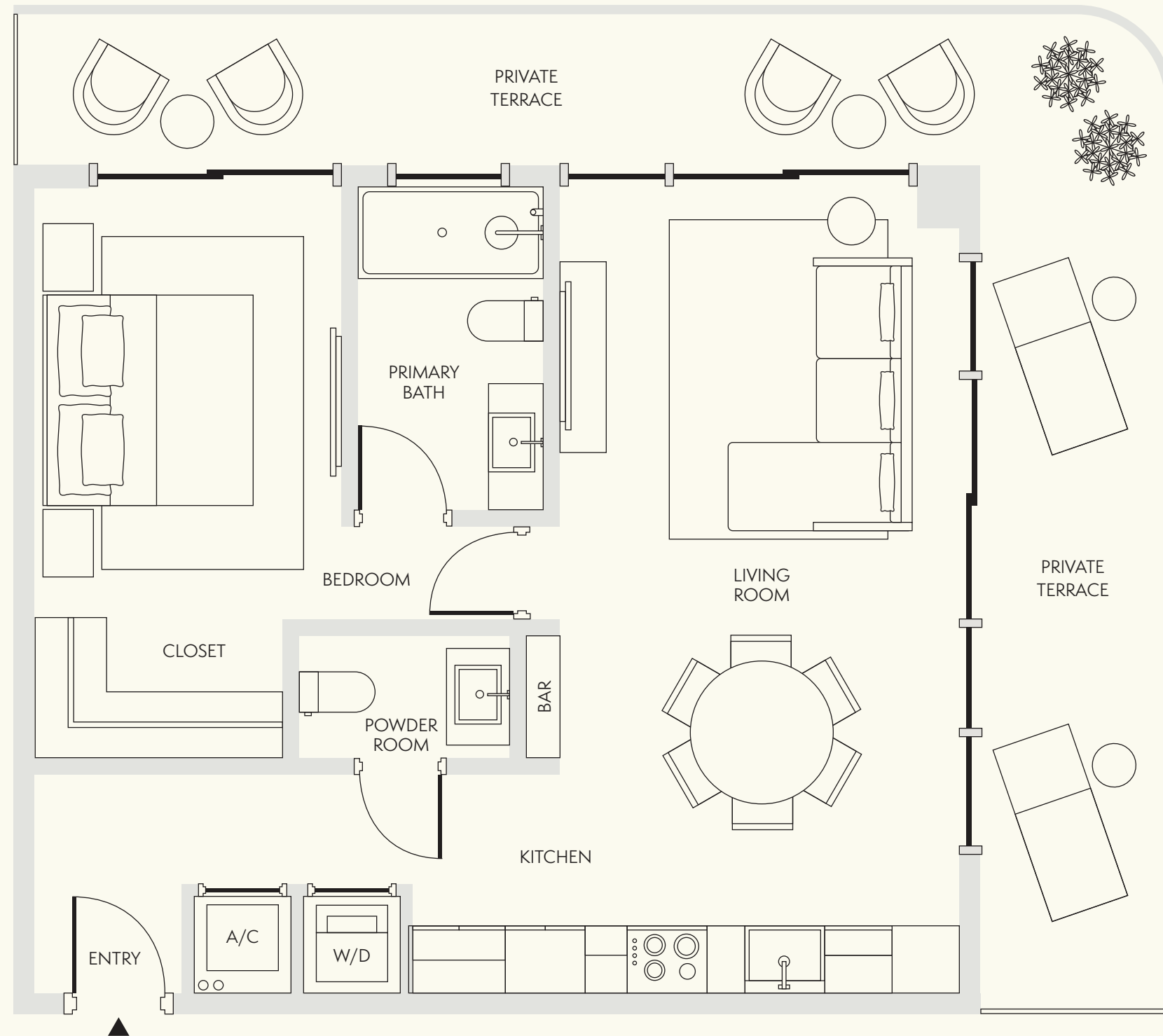
1 Bathroom

Interior
789 SF / 73 SM

Exterior
329-475 SF / 31-44 SM

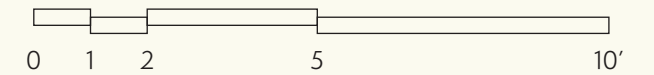
Total
1,118-1,264 SF / 104-117 SM

Dimensions
25'-5" x 28'-10"



Level 4-8
..... Extended balcony on select floors

Stated dimensions are measured to the exterior boundaries of the exterior walls and the centerline of interior demising walls and in fact vary from the dimensions that would be determined by using the description and definition of the "Unit" set forth in the Declaration (which generally only includes the interior airspace between the perimeter walls and excludes interior structural components). For the precise Unit boundaries, see Section 3.2 of the Declaration. The area of the Unit, determined in accordance with these defined Unit boundaries, is set forth in the Declaration. Note that measurements of rooms set forth on this floor plan are generally taken at the greatest points of each given room (as if the room were a perfect rectangle), without regard for any cutouts. Accordingly, the area of the actual room will typically be smaller than the product obtained by multiplying the stated length times width. All dimensions are approximate and may vary with actual construction, and all floor plans and development plans are subject to change. All depictions of furniture, appliances, counters and other matters of detail, including, without limitation, items of finish and decoration, are conceptual only and are not necessarily included in each Unit. Said items are only included if and to the extent provided in your purchase agreement.



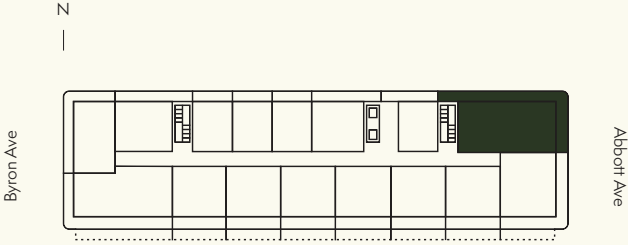
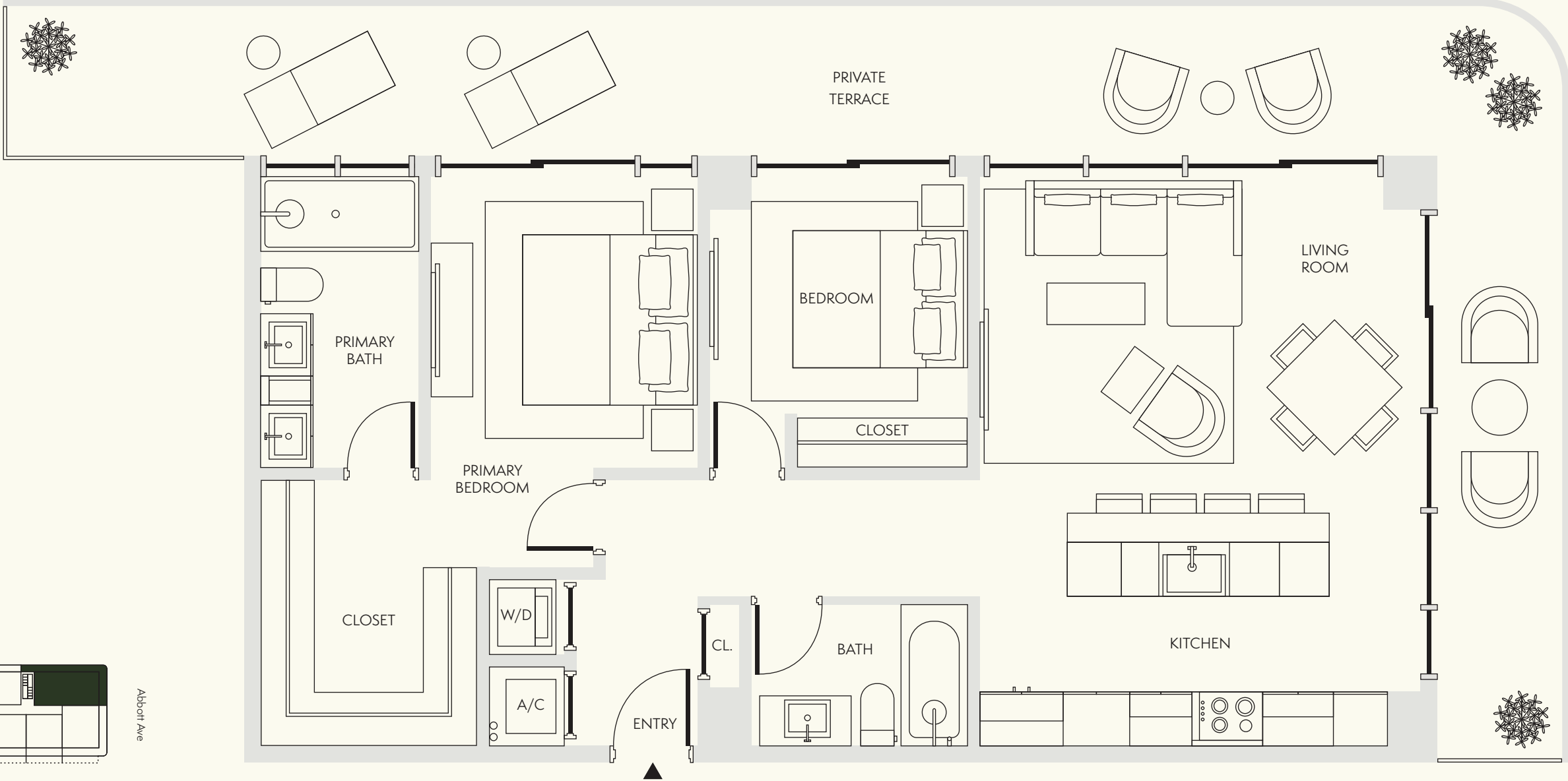
NOT TO SCALE

RESIDENCE 16



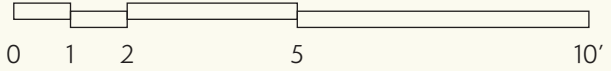
Level 4-9

2 Bedrooms
 2 Bathrooms
 Interior
 1,076 SF / 100 SM
 Exterior
 425 SF / 39 SM
 Total
 1,501 SF / 139 SM
 Dimensions
 44'-8" x 22'-4"



Level 4-8
 Extended balcony on select floors

Stated dimensions are measured to the exterior boundaries of the exterior walls and the centerline of interior demising walls and in fact vary from the dimensions that would be determined by using the description and definition of the "Unit" set forth in the Declaration (which generally only includes the interior airspace between the perimeter walls and excludes interior structural components). For the precise Unit boundaries, see Section 3.2 of the Declaration. The area of the Unit, determined in accordance with these defined Unit boundaries, is set forth in the Declaration. Note that measurements of rooms set forth on this floor plan are generally taken at the greatest points of each given room (as if the room were a perfect rectangle), without regard for any cutouts. Accordingly, the area of the actual room will typically be smaller than the product obtained by multiplying the stated length times width. All dimensions are approximate and may vary with actual construction, and all floor plans and development plans are subject to change. All depictions of furniture, appliances, counters and other matters of detail, including, without limitation, items of finish and decoration, are conceptual only and are not necessarily included in each Unit. Said items are only included if and to the extent provided in your purchase agreement.



NOT TO SCALE