



Shell Bay Residences
 AUBERGE RESORTS COLLECTION
 HALLANDALE BEACH, FLORIDA

Residence 3A

One Bedroom
 One Bathroom
 One Powder Room

INTERIOR

1,237 square feet / 115 square meters

EXTERIOR

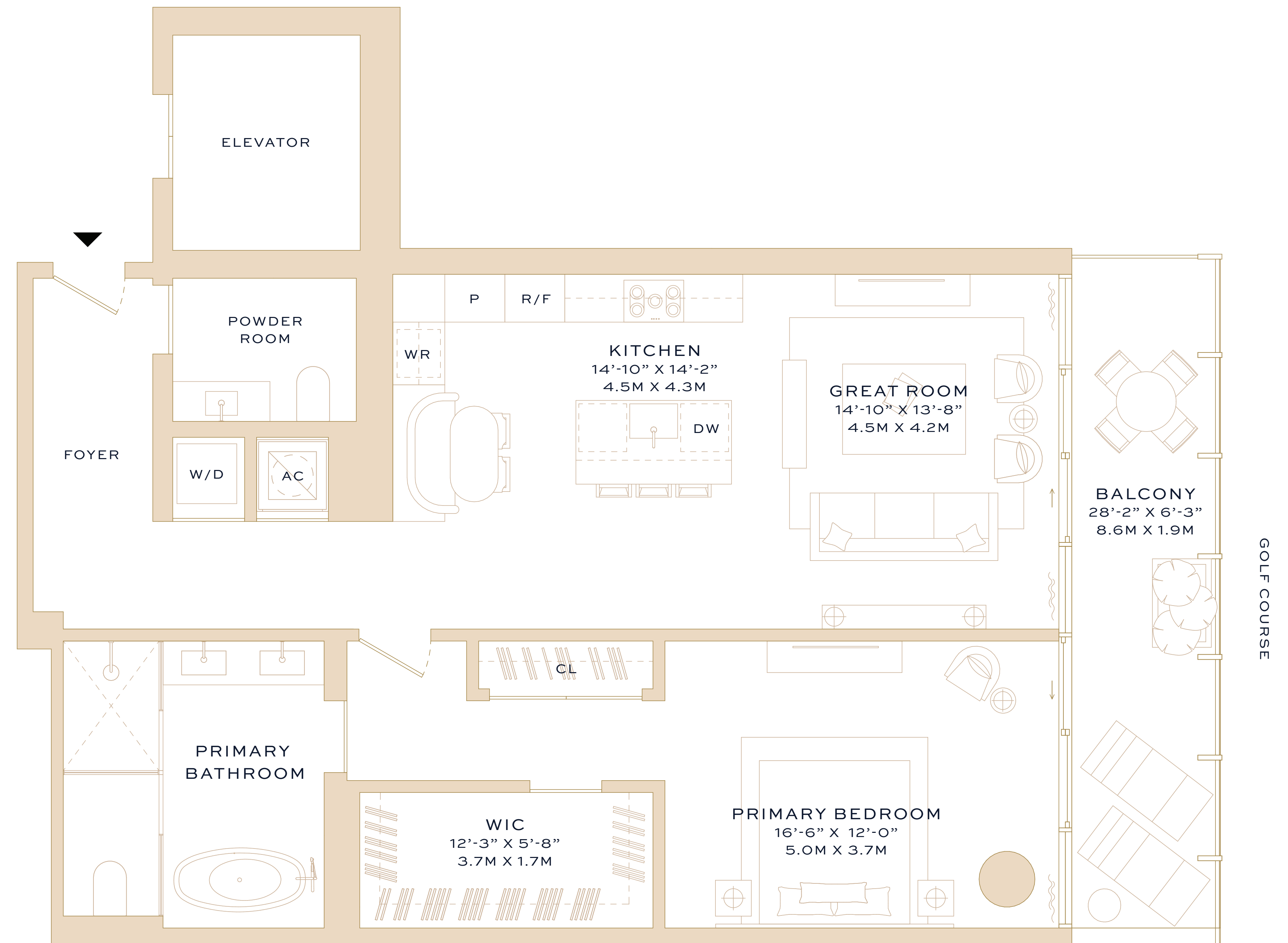
172 square feet / 16 square meters

TOTAL

1,409 square feet / 131 square meters

ADDRESS

501 Diplomat Parkway
 Hallandale Beach, Florida 33009



ORAL REPRESENTATIONS CANNOT BE RELIED UPON AS CORRECTLY STATING THE REPRESENTATIONS OF THE DEVELOPER. FOR CORRECT REPRESENTATIONS, MAKE REFERENCE TO THIS BROCHURE AND TO THE DOCUMENTS REQUIRED BY SECTION 718.503, FLORIDA STATUTES, TO BE FURNISHED BY A DEVELOPER TO A BUYER OR LESSEE.

NEITHER AUBERGE RESORTS LLC NOR ANY OF ITS AFFILIATES OR RELATED PERSONS (THE "AUBERGE GROUP") MAKES ANY REPRESENTATION, WARRANTY OR GUARANTEE, EXPRESSED OR IMPLIED, IN RESPECT OF ANY STATEMENT OR INFORMATION MADE OR CONTAINED IN THESE MATERIALS. NEITHER THE AUBERGE GROUP NOR ANY OF ITS DIRECTORS, OFFICERS, EMPLOYEES OR AGENTS HAS OR WILL HAVE ANY RESPONSIBILITY OR LIABILITY ARISING OUT OF, OR RELATED TO, THESE MATERIALS OR THE TRANSACTIONS CONTEMPLATED BY THESE MATERIALS, INCLUDING ANY LIABILITY OR RESPONSIBILITY FOR ANY STATEMENT OR INFORMATION MADE OR CONTAINED IN OR THE USE OF THESE MATERIALS.



Residence 4A

Four Bedrooms
 Three Bathrooms
 One Powder Room
 One Plunge Pool

INTERIOR LOWER

2,357 square feet / 219 square meters

INTERIOR UPPER

516 square feet / 48 square meters

EXTERIOR LOWER

1,530 square feet / 142 square meters

EXTERIOR UPPER

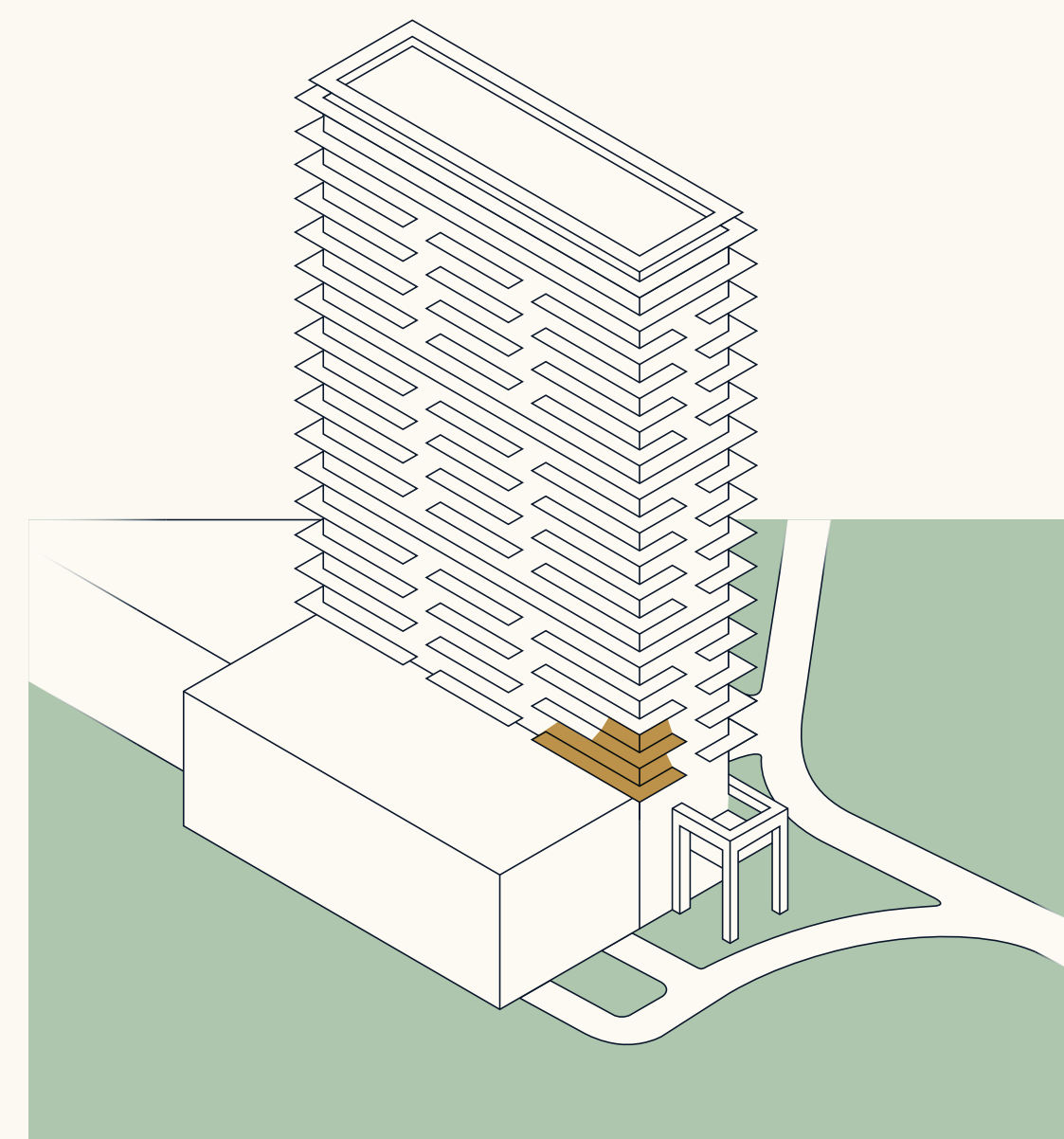
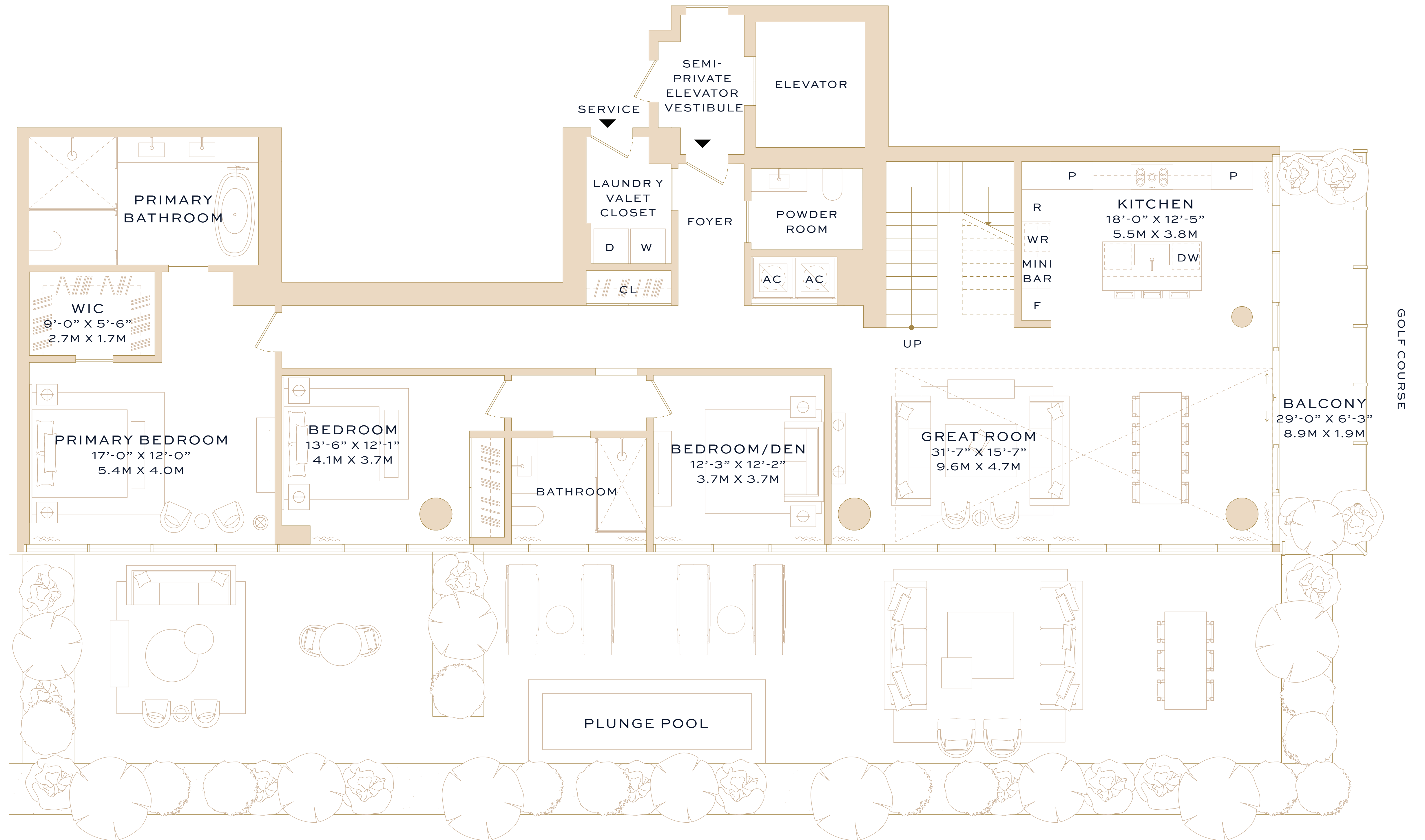
108 square feet / 10 square meters

TOTAL

4,511 square feet / 419 square meters

ADDRESS

501 Diplomat Parkway
 Hallandale Beach, Florida 33009



ORAL REPRESENTATIONS CANNOT BE RELIED UPON AS CORRECTLY STATING THE REPRESENTATIONS OF THE DEVELOPER. FOR CORRECT REPRESENTATIONS, MAKE REFERENCE TO THIS BROCHURE AND TO THE DOCUMENTS REQUIRED BY SECTION 718.503, FLORIDA STATUTES, TO BE FURNISHED BY A DEVELOPER TO A BUYER OR LESSEE.

NEITHER AUBERGE RESORTS LLC NOR ANY OF ITS AFFILIATES OR RELATED PERSONS (THE "AUBERGE GROUP") MAKES ANY REPRESENTATION, WARRANTY OR GUARANTEE, EXPRESSED OR IMPLIED, IN RESPECT OF ANY STATEMENT OR INFORMATION MADE OR CONTAINED IN THESE MATERIALS. NEITHER THE AUBERGE GROUP NOR ANY OF ITS DIRECTORS, OFFICERS, EMPLOYEES OR AGENTS HAS OR WILL HAVE ANY RESPONSIBILITY OR LIABILITY ARISING OUT OF, OR RELATED TO, THESE MATERIALS OR THE TRANSACTIONS CONTEMPLATED BY THESE MATERIALS, INCLUDING ANY LIABILITY OR RESPONSIBILITY FOR ANY STATEMENT OR INFORMATION MADE OR CONTAINED IN OR THE USE OF THESE MATERIALS.



Shell Bay Residences
 AUBERGE RESORTS COLLECTION
 HALLANDALE BEACH, FLORIDA

Residence 4A

Four Bedrooms
 Three Bathrooms
 One Powder Room
 One Plunge Pool

INTERIOR LOWER

2,357 square feet / 219 square meters

INTERIOR UPPER

516 square feet / 48 square meters

EXTERIOR LOWER

1,530 square feet / 142 square meters

EXTERIOR UPPER

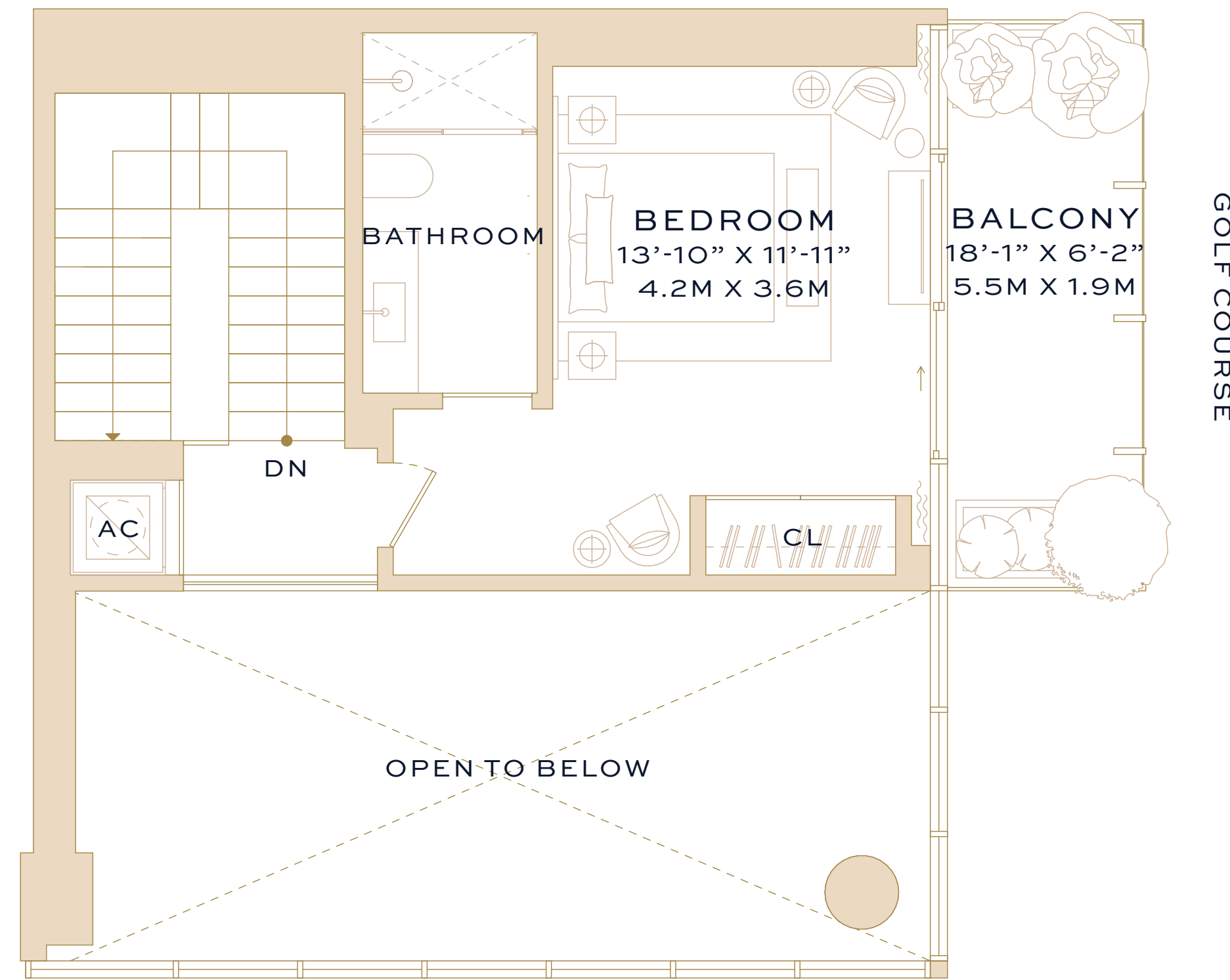
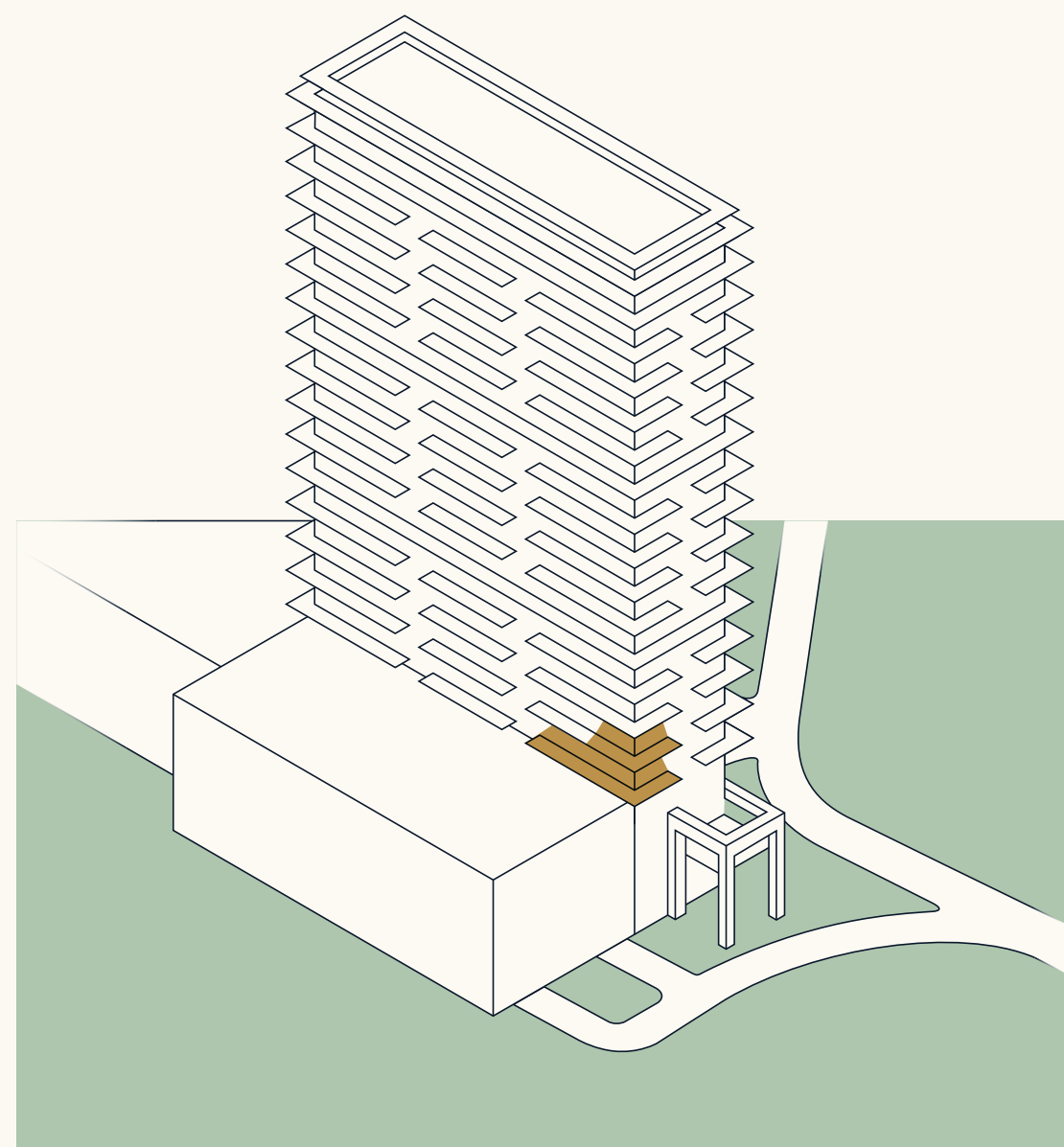
108 square feet / 10 square meters

TOTAL

4,511 square feet / 419 square meters

ADDRESS

501 Diplomat Parkway
 Hallandale Beach, Florida 33009



ORAL REPRESENTATIONS CANNOT BE RELIED UPON AS CORRECTLY STATING THE REPRESENTATIONS OF THE DEVELOPER. FOR CORRECT REPRESENTATIONS, MAKE REFERENCE TO THIS BROCHURE AND TO THE DOCUMENTS REQUIRED BY SECTION 718.503, FLORIDA STATUTES, TO BE FURNISHED BY A DEVELOPER TO A BUYER OR LESSEE.

NEITHER AUBERGE RESORTS LLC NOR ANY OF ITS AFFILIATES OR RELATED PERSONS (THE "AUBERGE GROUP") MAKES ANY REPRESENTATION, WARRANTY OR GUARANTEE, EXPRESSED OR IMPLIED, IN RESPECT OF ANY STATEMENT OR INFORMATION MADE OR CONTAINED IN THESE MATERIALS. NEITHER THE AUBERGE GROUP NOR ANY OF ITS DIRECTORS, OFFICERS, EMPLOYEES OR AGENTS HAS OR WILL HAVE ANY RESPONSIBILITY OR LIABILITY ARISING OUT OF, OR RELATED TO, THESE MATERIALS OR THE TRANSACTIONS CONTEMPLATED BY THESE MATERIALS, INCLUDING ANY LIABILITY OR RESPONSIBILITY FOR ANY STATEMENT OR INFORMATION MADE OR CONTAINED IN OR THE USE OF THESE MATERIALS.



The Residences at Shell Bay

AUBERGE RESORTS COLLECTION
HALLANDALE BEACH, FLORIDA

Residence 6-14A

Three Bedrooms
Three Bathrooms
Powder Room

INTERIOR

2,401 square feet / 223 square meters

EXTERIOR

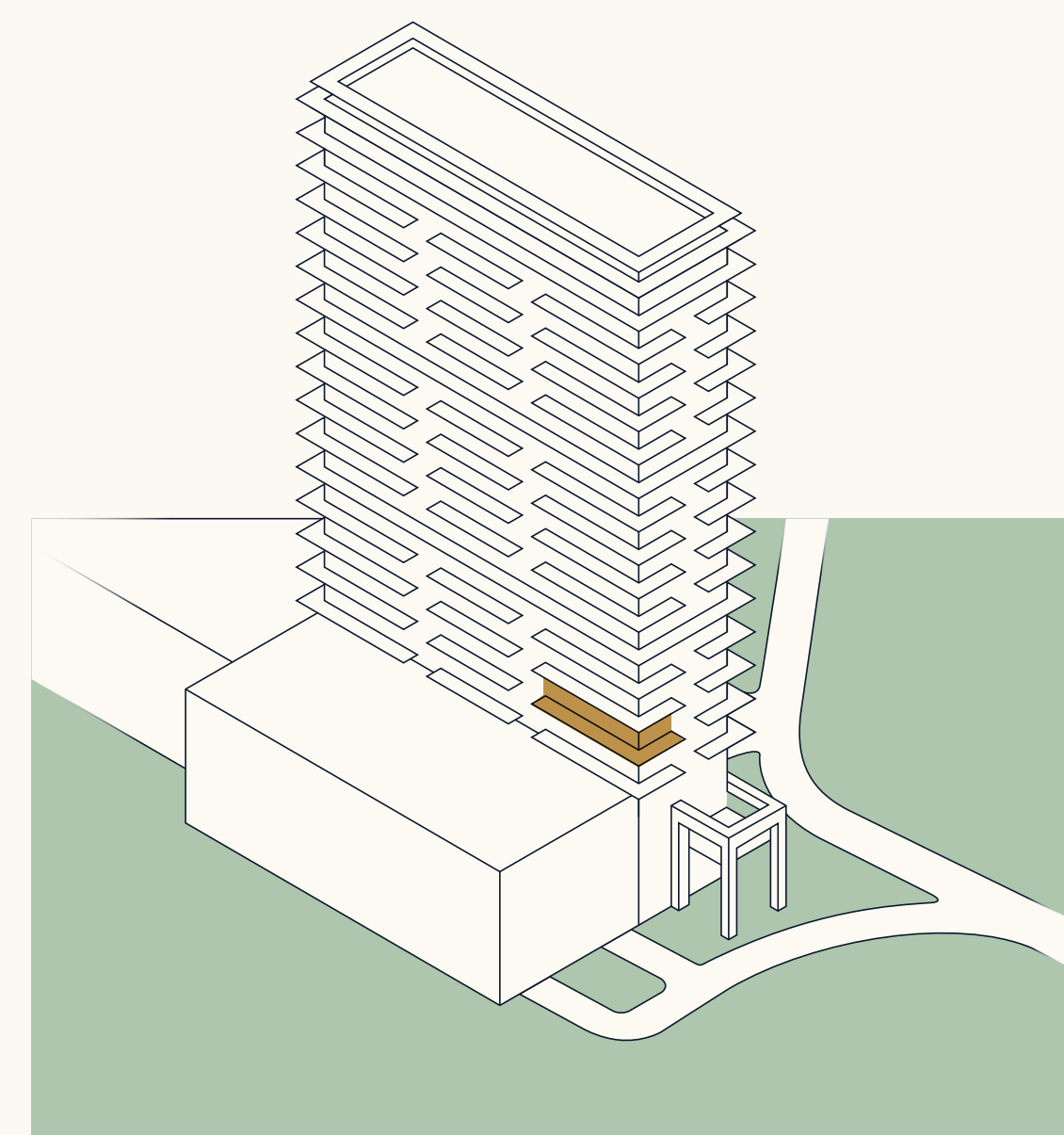
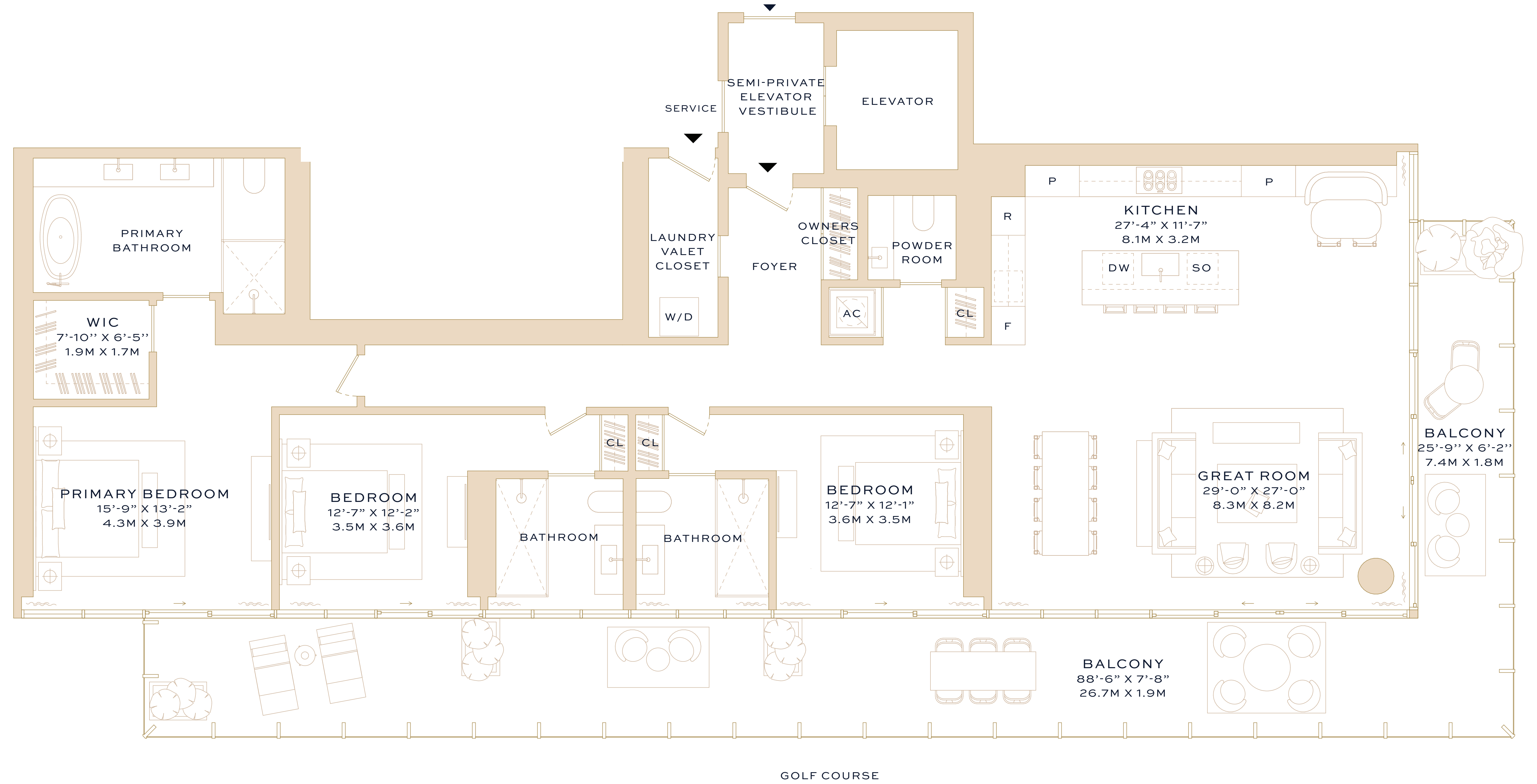
814 square feet / 76 square meters

TOTAL

3,215 square feet / 299 square meters

ADDRESS

501 Diplomat Parkway
Hallandale Beach, Florida 33009



ORAL REPRESENTATIONS CANNOT BE RELIED UPON AS CORRECTLY STATING THE REPRESENTATIONS OF THE DEVELOPER. FOR CORRECT REPRESENTATIONS, MAKE REFERENCE TO THIS BROCHURE AND TO THE DOCUMENTS REQUIRED BY SECTION 718.303, FLORIDA STATUTES, TO BE FURNISHED BY A DEVELOPER TO A BUYER OR LESSEE.

NEITHER AUBERGE RESORTS LLC NOR ANY OF ITS AFFILIATES OR RELATED PERSONS (THE "AUBERGE GROUP") MAKES ANY REPRESENTATION, WARRANTY OR GUARANTEE, EXPRESSED OR IMPLIED, IN RESPECT OF ANY STATEMENT OR INFORMATION MADE OR CONTAINED IN THESE MATERIALS. NEITHER THE AUBERGE GROUP NOR ANY OF ITS DIRECTORS, OFFICERS, EMPLOYEES OR AGENTS HAS OR WILL HAVE ANY RESPONSIBILITY OR LIABILITY ARISING OUT OF, OR RELATED TO, THESE MATERIALS OR THE TRANSACTIONS CONTEMPLATED BY THESE MATERIALS, INCLUDING ANY LIABILITY OR RESPONSIBILITY FOR ANY STATEMENT OR INFORMATION MADE OR CONTAINED IN OR THE USE OF THESE MATERIALS.



The Residences at Shell Bay

AUBERGE RESORTS COLLECTION
HALLANDALE BEACH, FLORIDA

Residence 6-14B

Three Bedrooms
Three Bathrooms
Powder Room

INTERIOR

2,605 square feet / 242 square meters

EXTERIOR

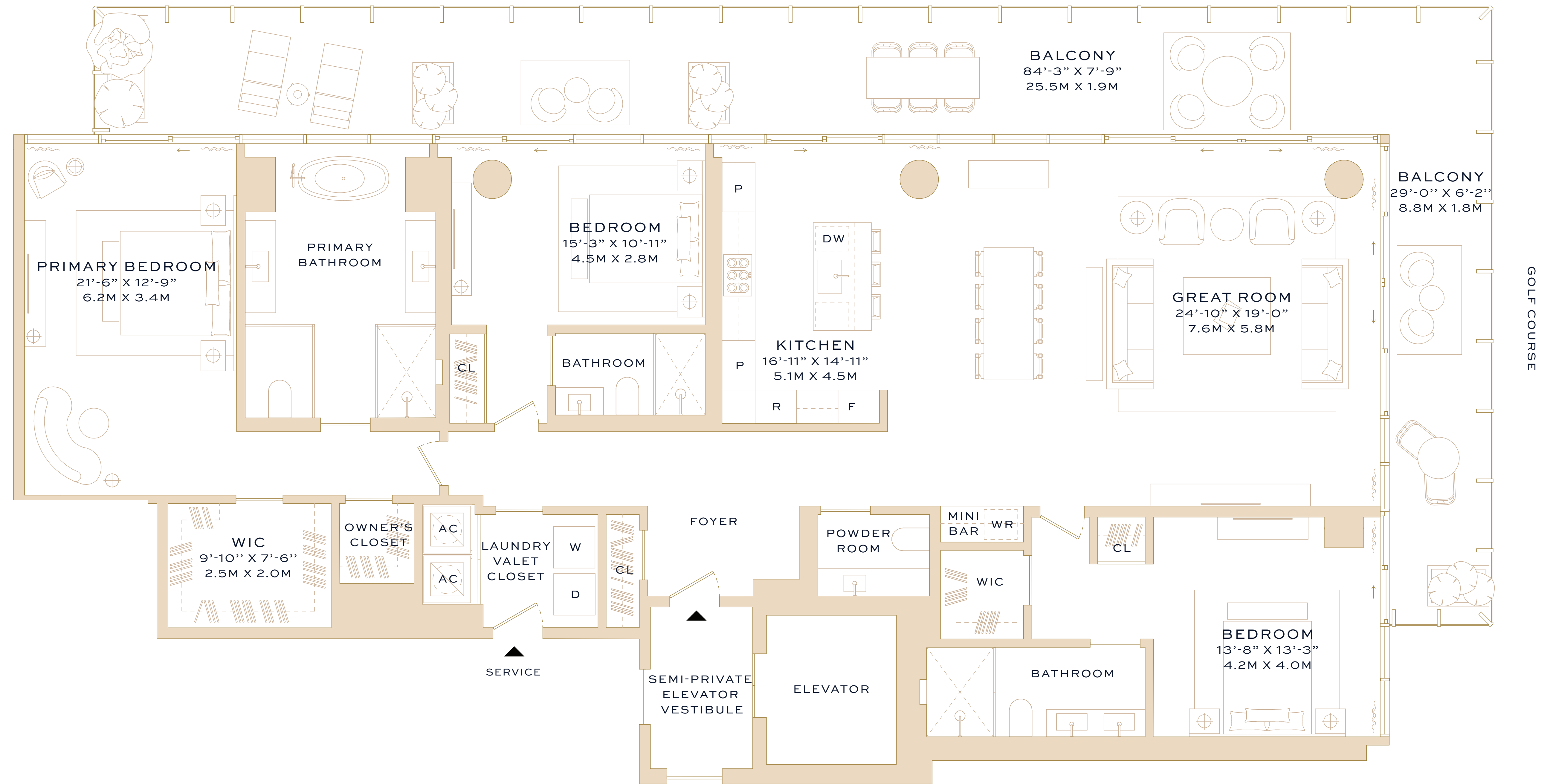
805 square feet / 75 square meters

TOTAL

3,410 square feet / 317 square meters

ADDRESS

501 Diplomat Parkway
Hallandale Beach, Florida 33009



ORAL REPRESENTATIONS CANNOT BE RELIED UPON AS CORRECTLY STATING THE REPRESENTATIONS OF THE DEVELOPER. FOR CORRECT REPRESENTATIONS, MAKE REFERENCE TO THIS BROCHURE AND TO THE DOCUMENTS REQUIRED BY SECTION 718.303, FLORIDA STATUTES, TO BE FURNISHED BY A DEVELOPER TO A BUYER OR LESSEE.

NEITHER AUBERGE RESORTS LLC NOR ANY OF ITS AFFILIATES OR RELATED PERSONS (THE "AUBERGE GROUP") MAKES ANY REPRESENTATION, WARRANTY OR GUARANTEE, EXPRESSED OR IMPLIED, IN RESPECT OF ANY STATEMENT OR INFORMATION MADE OR CONTAINED IN THESE MATERIALS. NEITHER THE AUBERGE GROUP NOR ANY OF ITS DIRECTORS, OFFICERS, EMPLOYEES OR AGENTS HAS OR WILL HAVE ANY RESPONSIBILITY OR LIABILITY ARISING OUT OF, OR RELATED TO, THESE MATERIALS OR THE TRANSACTIONS CONTEMPLATED BY THESE MATERIALS, INCLUDING ANY LIABILITY OR RESPONSIBILITY FOR ANY STATEMENT OR INFORMATION MADE OR CONTAINED IN OR THE USE OF THESE MATERIALS.



The Residences at Shell Bay

AUBERGE RESORTS COLLECTION
HALLANDALE BEACH, FLORIDA

Residence 6-14C

Two Bedrooms
Two Bathrooms
Powder Room

INTERIOR

1,626 square feet / 151 square meters

EXTERIOR

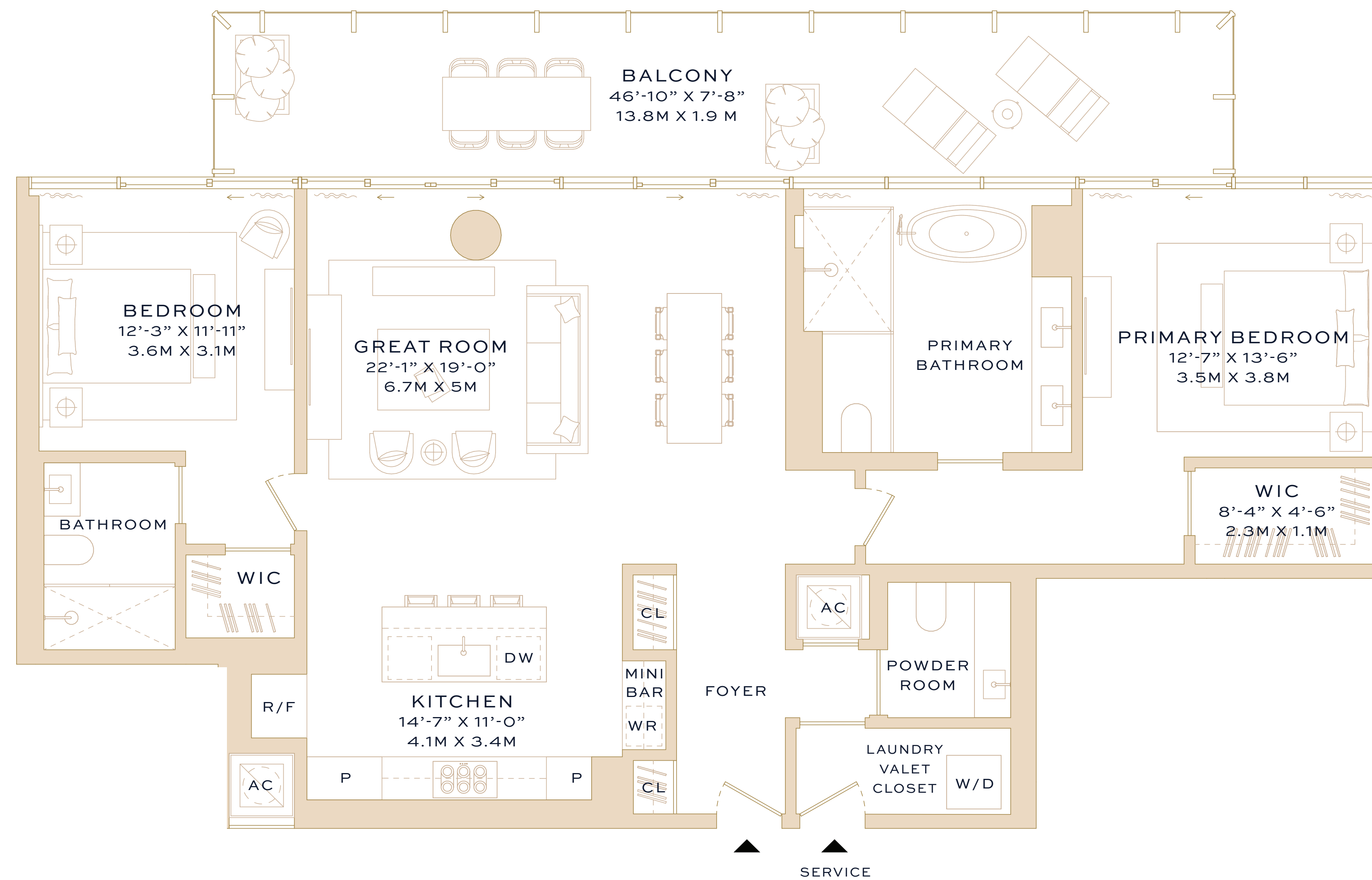
353 square feet / 33 square meters

TOTAL

1,979 square feet / 184 square meters

ADDRESS

501 Diplomat Parkway
Hallandale Beach, Florida 33009



ORAL REPRESENTATIONS CANNOT BE RELIED UPON AS CORRECTLY STATING THE REPRESENTATIONS OF THE DEVELOPER. FOR CORRECT REPRESENTATIONS, MAKE REFERENCE TO THIS BROCHURE AND TO THE DOCUMENTS REQUIRED BY SECTION 718.303, FLORIDA STATUTES, TO BE FURNISHED BY A DEVELOPER TO A BUYER OR LESSEE.

NEITHER AUBERGE RESORTS LLC NOR ANY OF ITS AFFILIATES OR RELATED PERSONS (THE "AUBERGE GROUP") MAKES ANY REPRESENTATION, WARRANTY OR GUARANTEE, EXPRESSED OR IMPLIED, IN RESPECT OF ANY STATEMENT OR INFORMATION MADE OR CONTAINED IN THESE MATERIALS. NEITHER THE AUBERGE GROUP NOR ANY OF ITS DIRECTORS, OFFICERS, EMPLOYEES OR AGENTS HAS OR WILL HAVE ANY RESPONSIBILITY OR LIABILITY ARISING OUT OF, OR RELATED TO, THESE MATERIALS OR THE TRANSACTIONS CONTEMPLATED BY THESE MATERIALS, INCLUDING ANY LIABILITY OR RESPONSIBILITY FOR ANY STATEMENT OR INFORMATION MADE OR CONTAINED IN OR THE USE OF THESE MATERIALS.



The Residences at Shell Bay

AUBERGE RESORTS COLLECTION
HALLANDALE BEACH, FLORIDA

Residence 6-14E

Two Bedrooms
Two Bathrooms
Powder Room

INTERIOR

1,918 square feet / 178 square meters

EXTERIOR

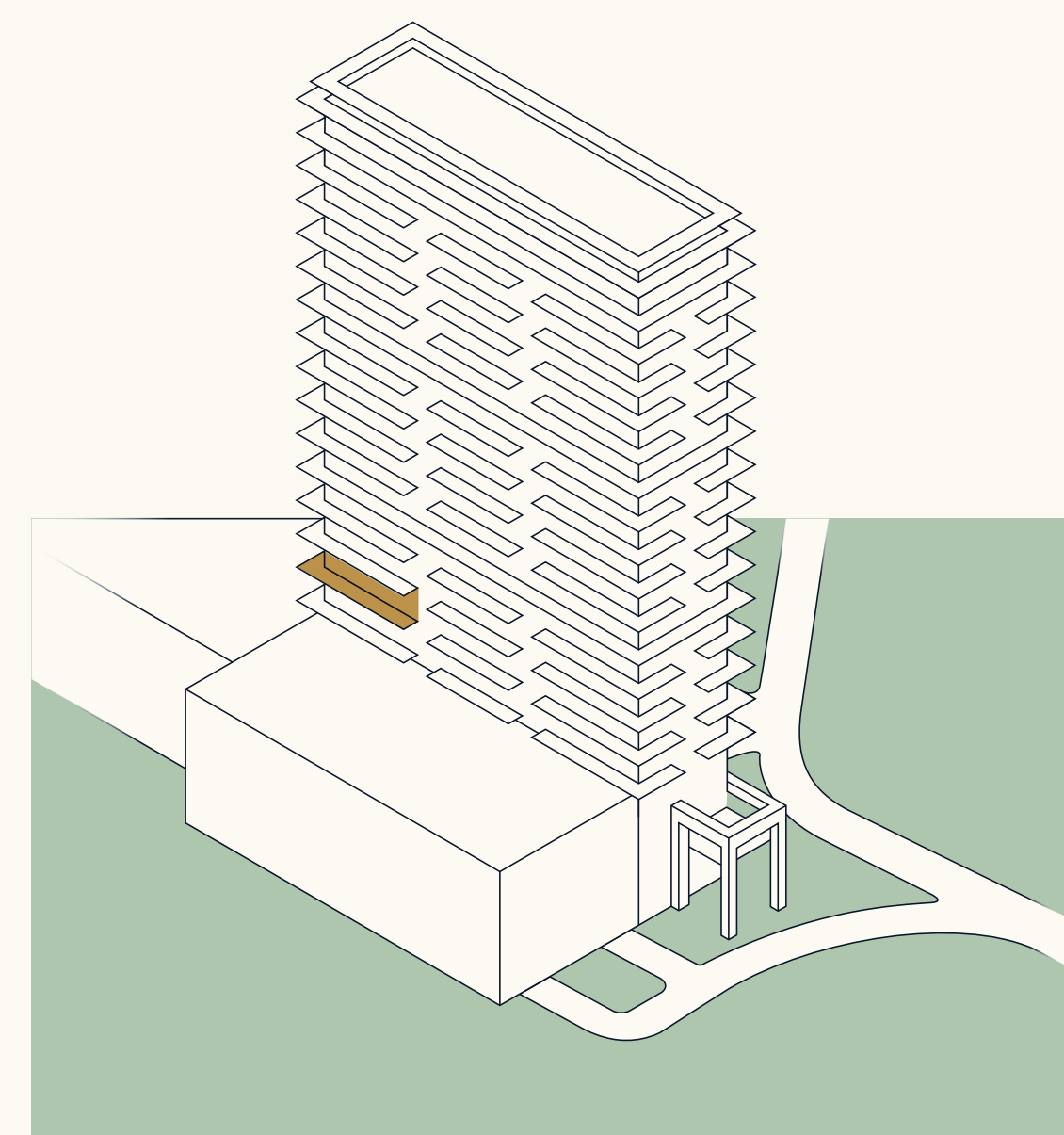
701 square feet / 65 square meters

TOTAL

2,619 square feet / 243 square meters

ADDRESS

501 Diplomat Parkway
Hallandale Beach, Florida 33009



ORAL REPRESENTATIONS CANNOT BE RELIED UPON AS CORRECTLY STATING THE REPRESENTATIONS OF THE DEVELOPER. FOR CORRECT REPRESENTATIONS, MAKE REFERENCE TO THIS BROCHURE AND TO THE DOCUMENTS REQUIRED BY SECTION 718.303, FLORIDA STATUTES, TO BE FURNISHED BY A DEVELOPER TO A BUYER OR LESSEE.

NEITHER AUBERGE RESORTS LLC NOR ANY OF ITS AFFILIATES OR RELATED PERSONS (THE "AUBERGE GROUP") MAKES ANY REPRESENTATION, WARRANTY OR GUARANTEE, EXPRESSED OR IMPLIED, IN RESPECT OF ANY STATEMENT OR INFORMATION MADE OR CONTAINED IN THESE MATERIALS. NEITHER THE AUBERGE GROUP NOR ANY OF ITS DIRECTORS, OFFICERS, EMPLOYEES OR AGENTS HAS OR WILL HAVE ANY RESPONSIBILITY OR LIABILITY ARISING OUT OF, OR RELATED TO, THESE MATERIALS OR THE TRANSACTIONS CONTEMPLATED BY THESE MATERIALS, INCLUDING ANY LIABILITY OR RESPONSIBILITY FOR ANY STATEMENT OR INFORMATION MADE OR CONTAINED IN OR THE USE OF THESE MATERIALS.



The Residences at Shell Bay

AUBERGE RESORTS COLLECTION
HALLANDALE BEACH, FLORIDA

Residence 16-18D

Two Bedrooms
Home Office
Three Bathrooms

INTERIOR

2,162 square feet / 201 square meters

EXTERIOR

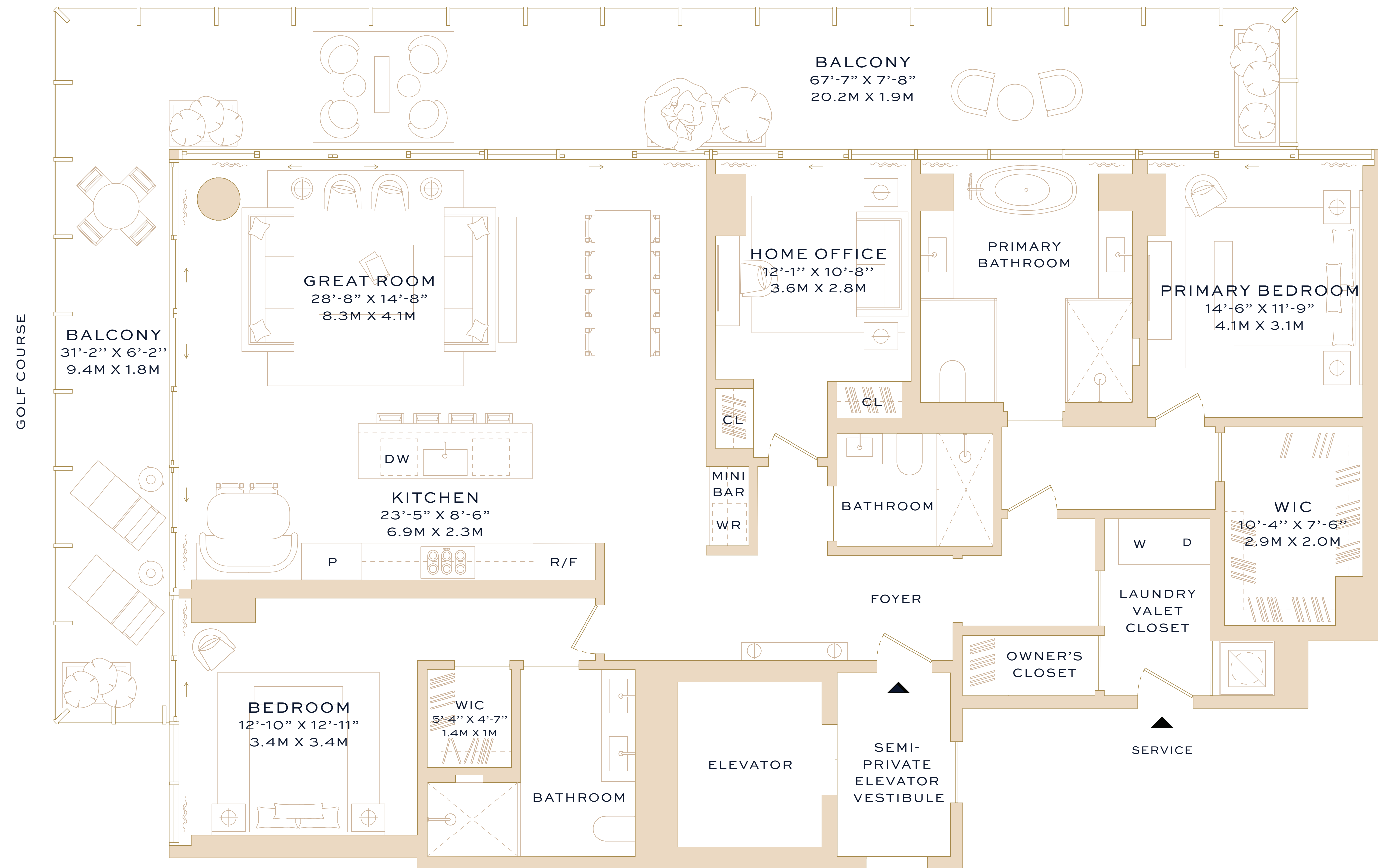
690 square feet / 64 square meters

TOTAL

2,852 square feet / 265 square meters

ADDRESS

501 Diplomat Parkway
Hallandale Beach, Florida 33009



ORAL REPRESENTATIONS CANNOT BE RELIED UPON AS CORRECTLY STATING THE REPRESENTATIONS OF THE DEVELOPER. FOR CORRECT REPRESENTATIONS, MAKE REFERENCE TO THIS BROCHURE AND TO THE DOCUMENTS REQUIRED BY SECTION 718.303, FLORIDA STATUTES, TO BE FURNISHED BY A DEVELOPER TO A BUYER OR LESSEE.

NEITHER AUBERGE RESORTS LLC NOR ANY OF ITS AFFILIATES OR RELATED PERSONS (THE "AUBERGE GROUP") MAKES ANY REPRESENTATION, WARRANTY OR GUARANTEE, EXPRESSED OR IMPLIED, IN RESPECT OF ANY STATEMENT OR INFORMATION MADE OR CONTAINED IN THESE MATERIALS. NEITHER THE AUBERGE GROUP NOR ANY OF ITS DIRECTORS, OFFICERS, EMPLOYEES OR AGENTS HAS OR WILL HAVE ANY RESPONSIBILITY OR LIABILITY ARISING OUT OF, OR RELATED TO, THESE MATERIALS OR THE TRANSACTIONS CONTEMPLATED BY THESE MATERIALS, INCLUDING ANY LIABILITY OR RESPONSIBILITY FOR ANY STATEMENT OR INFORMATION MADE OR CONTAINED IN OR THE USE OF THESE MATERIALS.