



SOUTH BEACH

**RESIDENCE AMENITIES**

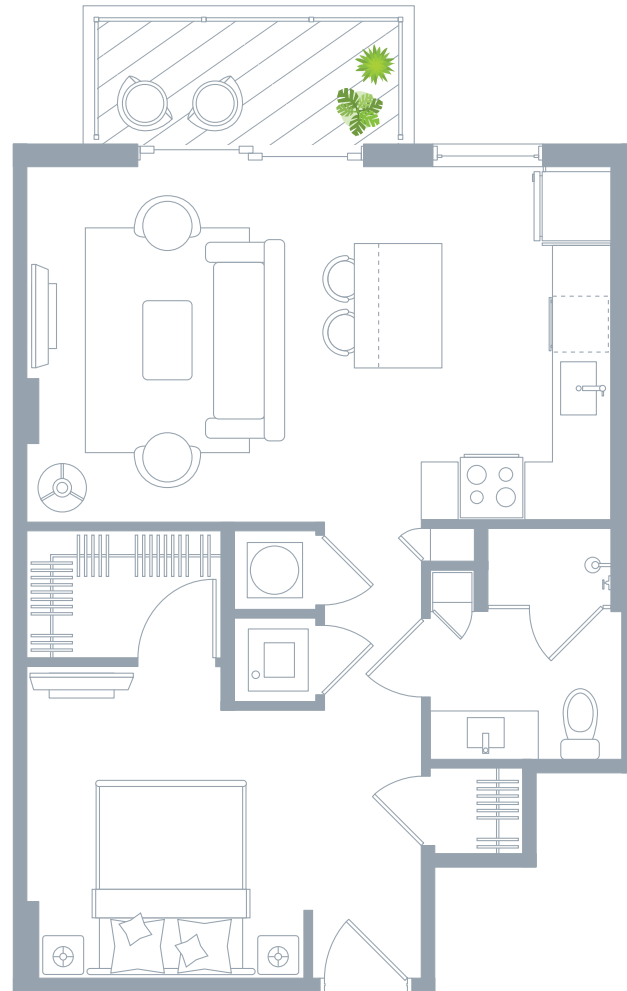
- Spacious floorplan
- 12 x 24 white porcelain CONCORD tiles
- Samsung smart WIFI enabled front load full size washer & dryers
- Private balcony
- Oversized walk-in closet fully built out
- Second closet (**this is the only studio that has a second closet**)
- NEST digital programable thermostats
- Digital keyless entry
- Designer lighting fixtures
- Linen closet

**CHEF-CALIBER KITCHENS**

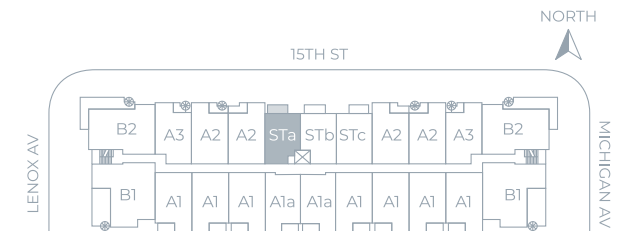
- White COMPAC quartz countertops
- Italian kitchen cabinetry
- USB charging station
- Full white quartz backsplash
- Pantry
- Multi-feature kitchen faucet
- Samsung **Family Hub** touch screen smart refrigerator
- Samsung smart WIFI enabled with Bluetooth connectivity high efficiency appliances

**SPA INSPIRED BATHS**

- Contemporary bath hardware
- Italian vanity with cultured white marble countertop
- Front lit mirror
- Artistically designed full height porcelain wet walls in shower
- Frameless glass shower enclosures
- Rain shower and hand shower in bath



UNIT STa	LEVEL 2 or 3
<b>1 BATH</b>	
Gross a/c Area	630 Sq. Ft.
Balcony	60 Sq. Ft.
<b>TOTAL</b>	<b>690 Sq. Ft.</b>



Unit has same location on both second or third level



Any renderings and depictions are conceptual only and are for the convenience of reference. They should not be relied upon as representations, express or implied, of the final detail of the Units nor the views from any of the Units. ORAL REPRESENTATIONS CANNOT BE RELIED UPON AS CORRECTLY STATING REPRESENTATIONS OF THE DEVELOPER. FOR CORRECT REPRESENTATIONS, MAKE REFERENCE TO THIS BROCHURE AND TO THE DOCUMENTS REQUIRED BY 718.503, FLORIDA STATUTES, TO BE FURNISHED BY A DEVELOPER TO A BUYER OR LESSEE.



**RESIDENCE AMENITIES**

- Spacious floorplan
- 12 x 24 white porcelain CONCORD tiles
- Samsung smart WIFI enabled front load full size washer & dryers
- Private balcony
- Oversized walk-in closet fully built out
- NEST digital programable thermostats
- Digital keyless entry
- Designer lighting fixtures
- Linen closet

**CHEF-CALIBER KITCHENS**

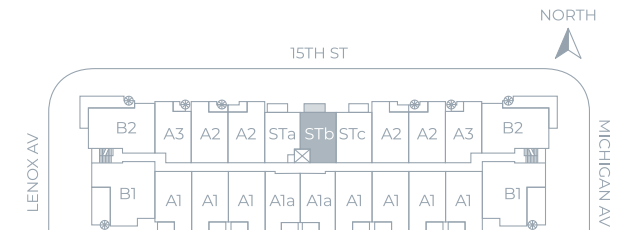
- White COMPAC quartz countertops
- Italian kitchen cabinetry
- USB charging station
- Full white quartz backsplash
- Pantry
- Multi-feature kitchen faucet
- Samsung **Family Hub** touch screen smart refrigerator
- Samsung smart WIFI enabled with Bluetooth connectivity high efficiency appliances

**SPA INSPIRED BATHS**

- Contemporary bath hardware
- Italian vanity with cultured white marble countertop
- Front lit mirror
- Artistically designed full height porcelain wet walls in shower
- Frameless glass shower enclosures
- Rain shower and hand shower in bath



UNIT STb	LEVEL 2 or 3
<b>1 BATH</b>	
Gross a/c Area	622 Sq. Ft.
Balcony	63 Sq. Ft.
<b>TOTAL</b>	<b>685 Sq. Ft.</b>



Unit has same location on both second or third level



Any renderings and depictions are conceptual only and are for the convenience of reference. They should not be relied upon as representations, express or implied, of the final detail of the Units nor the views from any of the Units. ORAL REPRESENTATIONS CANNOT BE RELIED UPON AS CORRECTLY STATING REPRESENTATIONS OF THE DEVELOPER. FOR CORRECT REPRESENTATIONS, MAKE REFERENCE TO THIS BROCHURE AND TO THE DOCUMENTS REQUIRED BY 718.503, FLORIDA STATUTES, TO BE FURNISHED BY A DEVELOPER TO A BUYER OR LESSEE.



SOUTH BEACH

**RESIDENCE AMENITIES**

- Spacious floorplan
- 12 x 24 white porcelain CONCORD tiles
- Samsung smart WIFI enabled front load full size washer & dryers
- Private balcony
- Oversized walk-in closet fully built out
- NEST digital programable thermostats
- Digital keyless entry
- Designer lighting fixtures
- Linen closet

**CHEF-CALIBER KITCHENS**

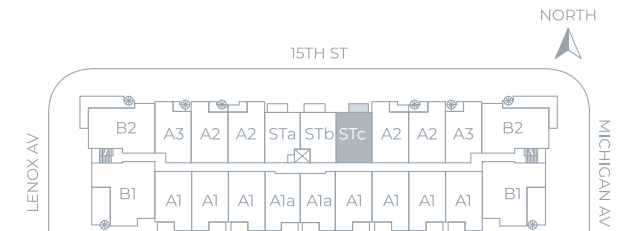
- White COMPAC quartz countertops
- Italian kitchen cabinetry
- USB charging station
- Full white quartz backsplash
- Pantry
- Multi-feature kitchen faucet
- Samsung **Family Hub** touch screen smart refrigerator
- Samsung smart WIFI enabled with Bluetooth connectivity high efficiency appliances

**SPA INSPIRED BATHS**

- Contemporary bath hardware
- Italian vanity with cultured white marble countertop
- Front lit mirror
- Artistically designed full height porcelain wet walls in shower
- Frameless glass shower enclosures
- Rain shower and hand shower in bath



UNIT STc	LEVEL 2 or 3
<b>1 BATH</b>	
Gross a/c Area	621 Sq. Ft.
Balcony	60 Sq. Ft.
<b>TOTAL</b>	<b>681 Sq. Ft.</b>



Unit has same location on both second or third level



Any renderings and depictions are conceptual only and are for the convenience of reference. They should not be relied upon as representations, express or implied, of the final detail of the Units nor the views from any of the Units. ORAL REPRESENTATIONS CANNOT BE RELIED UPON AS CORRECTLY STATING REPRESENTATIONS OF THE DEVELOPER. FOR CORRECT REPRESENTATIONS, MAKE REFERENCE TO THIS BROCHURE AND TO THE DOCUMENTS REQUIRED BY 718.503, FLORIDA STATUTES, TO BE FURNISHED BY A DEVELOPER TO A BUYER OR LESSEE.



SOUTH BEACH

### RESIDENCE AMENITIES

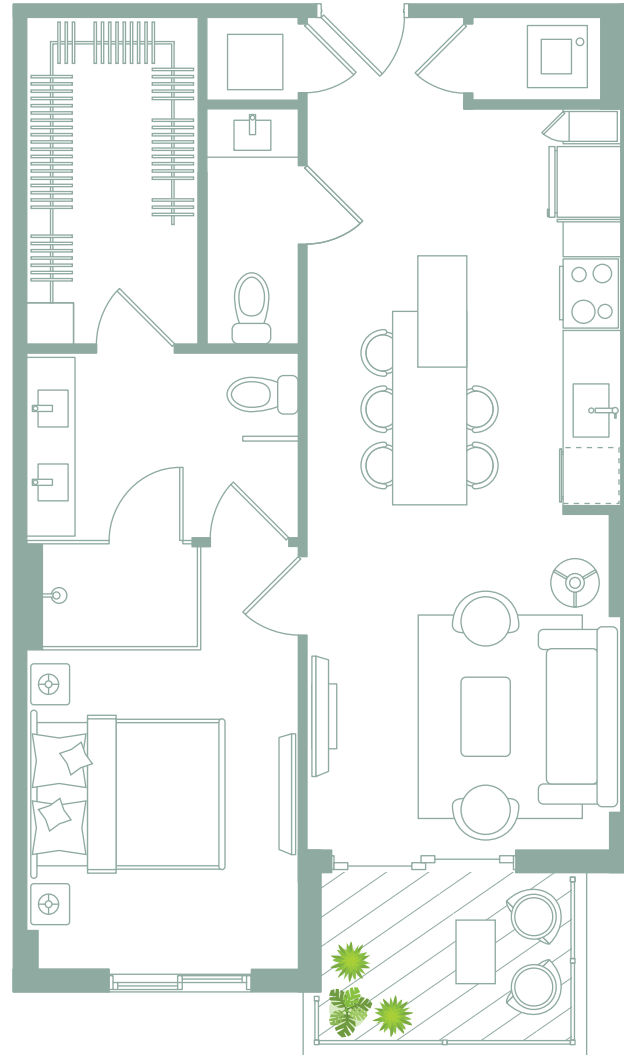
- Spacious floorplan
- 12 x 24 white porcelain CONCORD tiles
- Samsung smart WIFI enabled front load full size washer & dryers
- Private balcony
- Oversized walk-in master closet fully built out
- NEST digital programable thermostats
- Digital keyless entry
- Designer lighting fixtures

### CHEF-CALIBER KITCHENS

- White COMPAC quartz countertops
- Italian kitchen cabinetry
- USB charging station
- Full white quartz backsplash
- Pantry
- Multi-feature kitchen faucet
- Samsung **Family Hub** touch screen smart refrigerator
- Samsung smart WIFI enabled with Bluetooth connectivity high efficiency appliances
- Multi-feature kitchen faucet

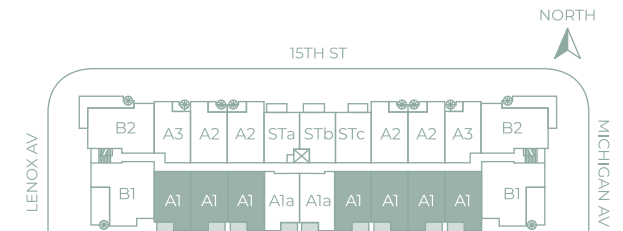
### SPA INSPIRED BATHS

- Contemporary bath hardware
- Italian vanity with cultured white marble countertop
- Front lit mirror
- Artistically designed full height porcelain wet walls in shower
- Open concept bathroom
- Frameless glass shower enclosure
- Rain shower and hand shower in master bath
- Powder room
- Double sink in master bath



UNIT A1	LEVEL 2
<b>1 BEDROOM / 1.5 BATH</b>	
Gross a/c Area	738 Sq. Ft.
Balcony	65 Sq. Ft.
<b>TOTAL</b>	<b>803 Sq. Ft.</b>

UNIT A1	LEVEL 3
<b>1 BEDROOM / 1.5 BATH</b>	
Gross a/c Area	738 Sq. Ft.
Balcony	57 Sq. Ft.
<b>TOTAL</b>	<b>795 Sq. Ft.</b>



Unit has same location on both second or third level



Any renderings and depictions are conceptual only and are for the convenience of reference. They should not be relied upon as representations, express or implied, of the final detail of the Units nor the views from any of the Units.

ORAL REPRESENTATIONS CANNOT BE RELIED UPON AS CORRECTLY STATING REPRESENTATIONS OF THE DEVELOPER. FOR CORRECT REPRESENTATIONS, MAKE REFERENCE TO THIS BROCHURE AND TO THE DOCUMENTS REQUIRED BY 718.503, FLORIDA STATUTES, TO BE FURNISHED BY A DEVELOPER TO A BUYER OR LESSEE.



SOUTH BEACH

**RESIDENCE AMENITIES**

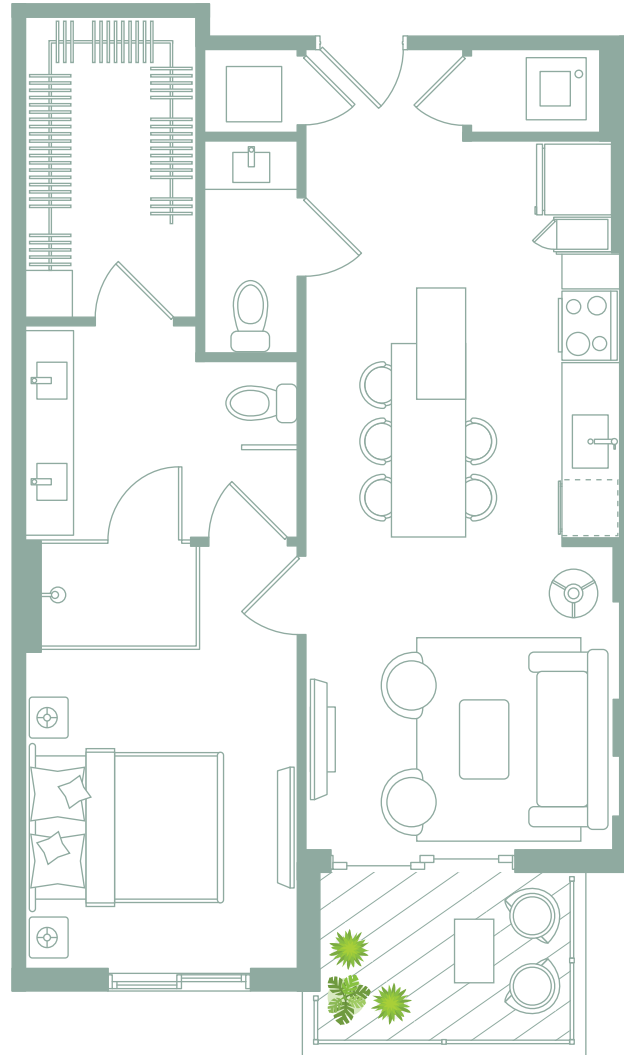
- Spacious floorplan
- 12 x 24 white porcelain CONCORD tiles
- Samsung smart WIFI enabled front load full size washer & dryers
- Private balcony
- Oversized walk-in master closet fully built out
- NEST digital programable thermostats
- Digital keyless entry
- Designer lighting fixtures

**CHEF-CALIBER KITCHENS**

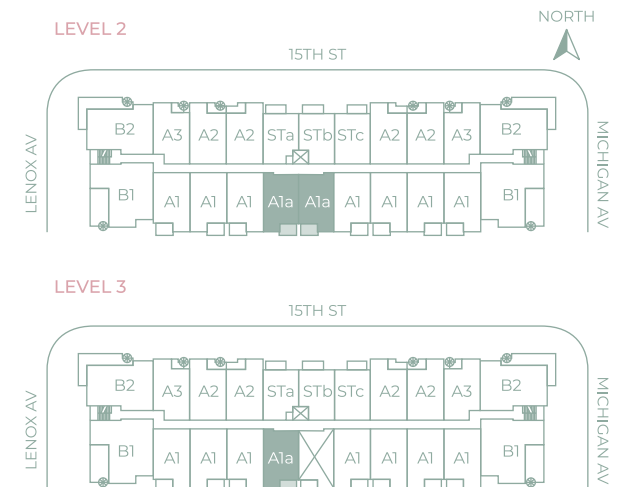
- White COMPAC quartz countertops
- Italian kitchen cabinetry
- USB charging station
- Full white quartz backsplash
- Pantry
- Multi-feature kitchen faucet
- Samsung **Family Hub** touch screen smart refrigerator
- Samsung smart WIFI enabled with Bluetooth connectivity high efficiency appliances
- Multi-feature kitchen faucet

**SPA INSPIRED BATHS**

- Contemporary bath hardware
- Italian vanity with cultured white marble countertop
- Front lit mirror
- Artistically designed full height porcelain wet walls in shower
- Open concept bathroom
- Frameless glass shower enclosure
- Rain shower and hand shower in master bath
- Powder room
- Double sink in master bath



UNIT A1a	LEVEL 2 or 3
<b>1 BEDROOM / 1.5 BATH</b>	
Gross a/c Area	721 Sq. Ft.
Balcony	65 Sq. Ft.
<b>TOTAL</b>	<b>786 Sq. Ft.</b>



Any renderings and depictions are conceptual only and are for the convenience of reference. They should not be relied upon as representations, express or implied, of the final detail of the Units nor the views from any of the Units.

ORAL REPRESENTATIONS CANNOT BE RELIED UPON AS CORRECTLY STATING REPRESENTATIONS OF THE DEVELOPER. FOR CORRECT REPRESENTATIONS, MAKE REFERENCE TO THIS BROCHURE AND TO THE DOCUMENTS REQUIRED BY 718.503, FLORIDA STATUTES, TO BE FURNISHED BY A DEVELOPER TO A BUYER OR LESSEE.



SOUTH BEACH

**RESIDENCE AMENITIES**

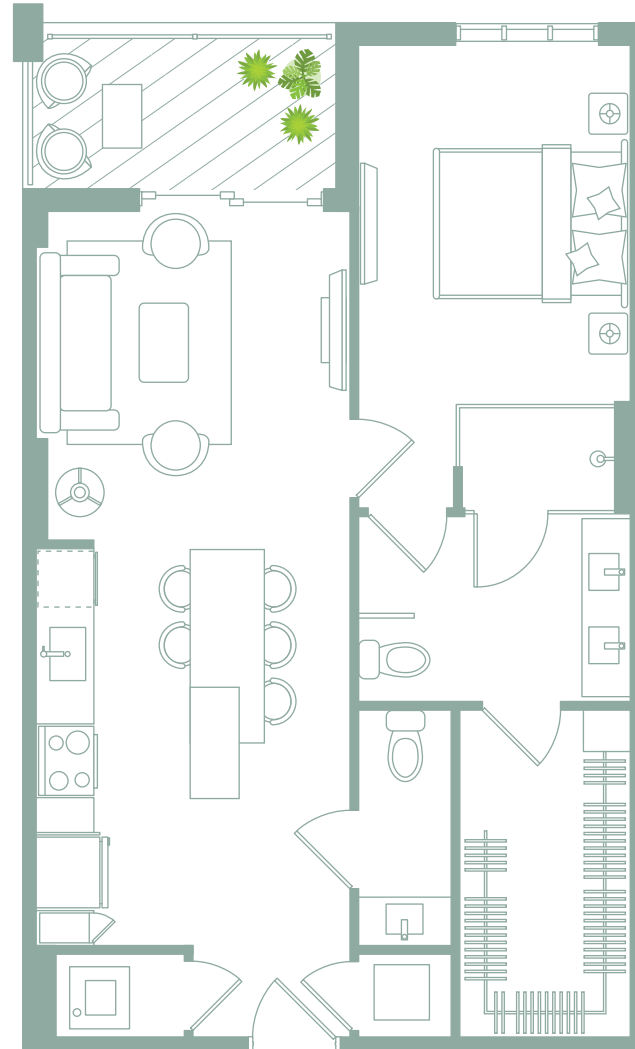
- Spacious floorplan
- 12 x 24 white porcelain CONCORD tiles
- Samsung smart WIFI enabled front load full size washer & dryers
- Private balcony
- Oversized walk-in master closet fully built out
- NEST digital programable thermostats
- Digital keyless entry
- Designer lighting fixtures

**CHEF-CALIBER KITCHENS**

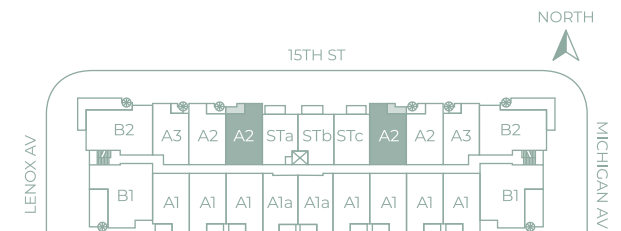
- White COMPAC quartz countertops
- Italian kitchen cabinetry
- USB charging station
- Full white quartz backsplash
- Pantry
- Multi-feature kitchen faucet
- Samsung **Family Hub** touch screen smart refrigerator
- Samsung smart WIFI enabled with Bluetooth connectivity high efficiency appliances
- Multi-feature kitchen faucet

**SPA INSPIRED BATHS**

- Contemporary bath hardware
- Italian vanity with cultured white marble countertop
- Front lit mirror
- Artistically designed full height porcelain wet walls in shower
- Open concept bathroom
- Frameless glass shower enclosure
- Rain shower and hand shower in master bath
- Powder room
- Double sink in master bath



UNIT A2 - NO TERRACE	LEVEL 2
<b>1 BEDROOM / 1.5 BATH</b>	
Gross a/c Area	751 Sq. Ft.
Balcony	70 Sq. Ft.
<b>TOTAL</b>	<b>821 Sq. Ft.</b>



Any renderings and depictions are conceptual only and are for the convenience of reference. They should not be relied upon as representations, express or implied, of the final detail of the Units nor the views from any of the Units.

ORAL REPRESENTATIONS CANNOT BE RELIED UPON AS CORRECTLY STATING REPRESENTATIONS OF THE DEVELOPER. FOR CORRECT REPRESENTATIONS, MAKE REFERENCE TO THIS BROCHURE AND TO THE DOCUMENTS REQUIRED BY 718.503, FLORIDA STATUTES, TO BE FURNISHED BY A DEVELOPER TO A BUYER OR LESSEE.



SOUTH BEACH

**RESIDENCE AMENITIES**

- Spacious floorplan
- 12 x 24 white porcelain CONCORD tiles
- Samsung smart WIFI enabled front load full size washer & dryers
- Private balcony
- Oversized private terrace
- Oversized walk-in master closet fully built out
- NEST digital programable thermostats
- Digital keyless entry
- Designer lighting fixtures

**CHEF-CALIBER KITCHENS**

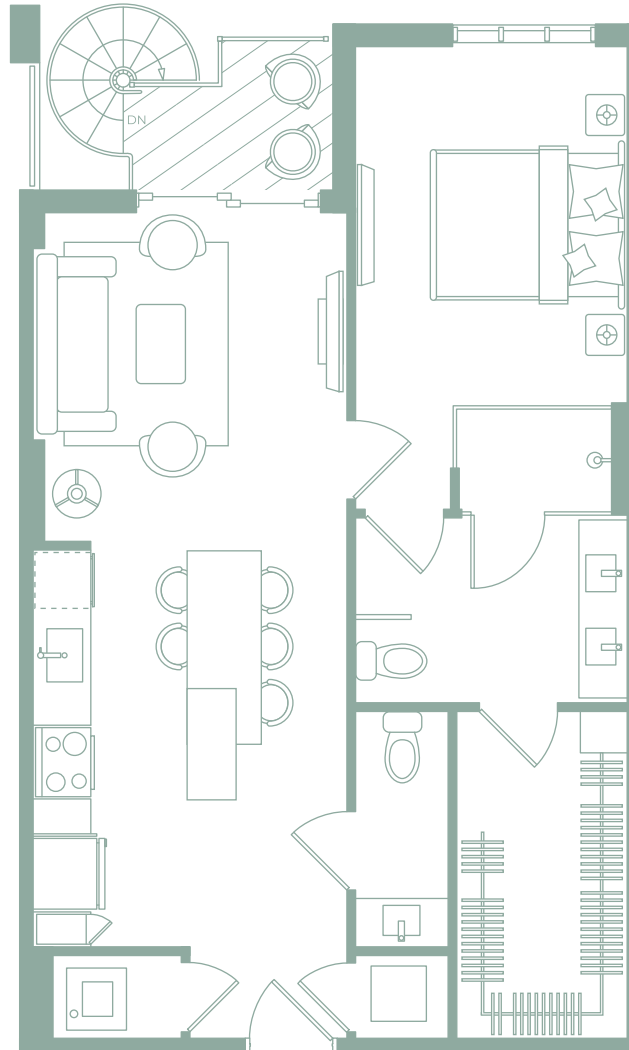
- White COMPAC quartz countertops
- Italian kitchen cabinetry
- Extended quartz island with dining table
- USB charging station
- Full white quartz backsplash
- Pantry
- Multi-feature kitchen faucet
- Samsung **Family Hub** touch screen smart refrigerator
- Samsung smart WIFI enabled with Bluetooth connectivity high efficiency appliances

**SPA INSPIRED BATHS**

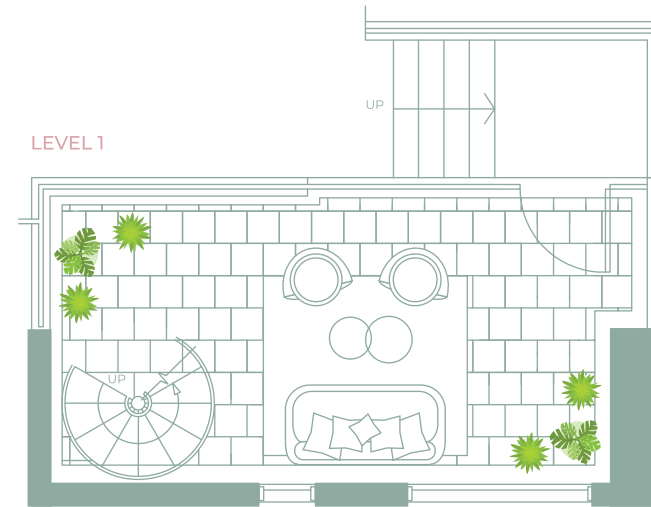
- Contemporary bath hardware
- Italian vanity with cultured white marble countertop
- Front lit mirror
- Artistically designed full height porcelain wet walls in shower
- Open concept bathroom
- Frameless glass shower enclosure
- Rain shower and hand shower in master bath
- Powder room
- Double sink in master bath

\* All these units come with 2 parking spaces

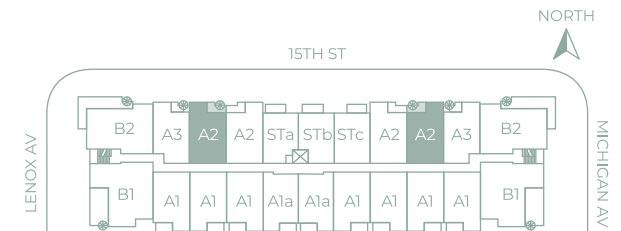
LEVEL 2



LEVEL 1



UNIT A2 - TERRACE	LEVEL 2
<b>1 BEDROOM / 1.5 BATH</b>	
Gross a/c Area	751 Sq. Ft.
Balcony	39 Sq. Ft.
Terrace	237 Sq. Ft.
<b>TOTAL</b>	<b>1027 Sq. Ft.</b>



Any renderings and depictions are conceptual only and are for the convenience of reference. They should not be relied upon as representations, express or implied, of the final detail of the Units nor the views from any of the Units. ORAL REPRESENTATIONS CANNOT BE RELIED UPON AS CORRECTLY STATING REPRESENTATIONS OF THE DEVELOPER. FOR CORRECT REPRESENTATIONS, MAKE REFERENCE TO THIS BROCHURE AND TO THE DOCUMENTS REQUIRED BY 718.503, FLORIDA STATUTES, TO BE FURNISHED BY A DEVELOPER TO A BUYER OR LESSEE.



SOUTH BEACH

**RESIDENCE AMENITIES**

- Spacious floorplan
- 12 x 24 white porcelain CONCORD tiles
- Samsung smart WIFI enabled front load full size washer & dryers
- Private balcony
- Private terrace
- Oversized walk-in master closet fully built out
- NEST digital programable thermostats
- Digital keyless entry
- Designer lighting fixtures

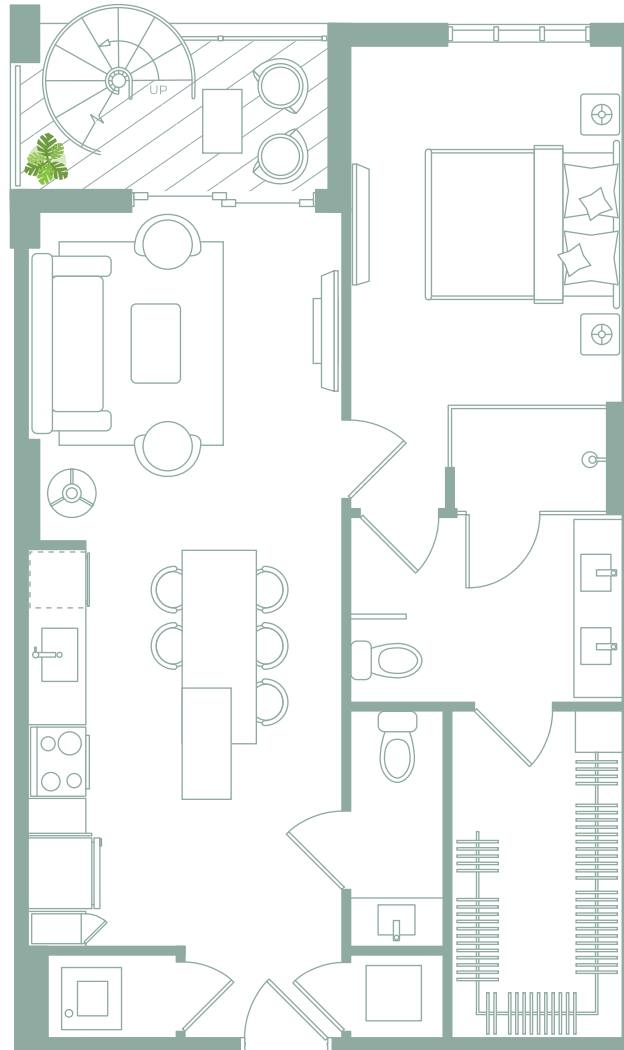
**CHEF-CALIBER KITCHENS**

- White COMPAC quartz countertops
- Italian kitchen cabinetry
- Extended quartz island with dining table
- USB charging station
- Full white quartz backsplash
- Pantry
- Multi-feature kitchen faucet
- Samsung **Family Hub** touch screen smart refrigerator
- Samsung smart WIFI enabled with Bluetooth connectivity high efficiency appliances

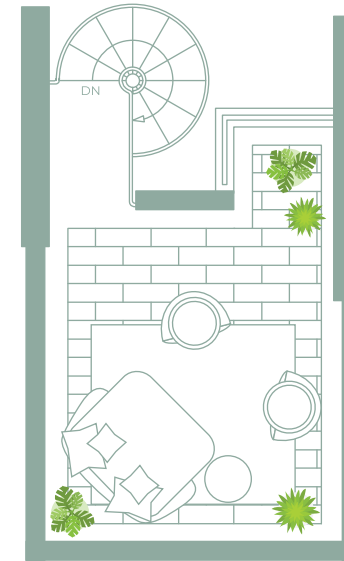
**SPA INSPIRED BATHS**

- Contemporary bath hardware
- Italian vanity with cultured white marble countertop
- Front lit mirror
- Artistically designed full height porcelain wet walls in shower
- Open concept bathroom
- Frameless glass shower enclosure
- Rain shower and hand shower in master bath
- Powder room

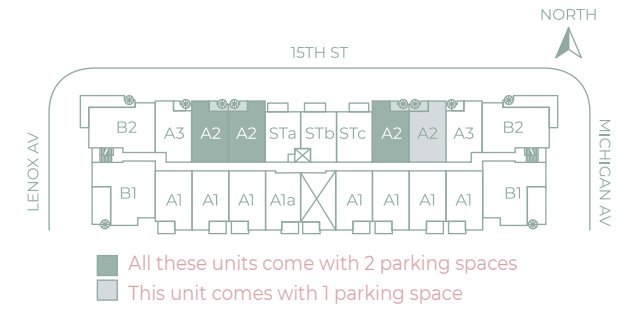
LEVEL 3



LEVEL 4



UNIT A2 - TERRACE	LEVEL 3
<b>1 BEDROOM / 1.5 BATH</b>	
Gross a/c Area	751 Sq. Ft.
Balcony	50 Sq. Ft.
Terrace	163 Sq. Ft.
<b>TOTAL</b>	<b>964 Sq. Ft.</b>



**SHOMA**

Any renderings and depictions are conceptual only and are for the convenience of reference. They should not be relied upon as representations, express or implied, of the final detail of the Units nor the views from any of the Units. ORAL REPRESENTATIONS CANNOT BE RELIED UPON AS CORRECTLY STATING REPRESENTATIONS OF THE DEVELOPER. FOR CORRECT REPRESENTATIONS, MAKE REFERENCE TO THIS BROCHURE AND TO THE DOCUMENTS REQUIRED BY 718.503, FLORIDA STATUTES, TO BE FURNISHED BY A DEVELOPER TO A BUYER OR LESSEE.





SOUTH BEACH

**RESIDENCE AMENITIES**

- Spacious floorplan
- 12 x 24 white porcelain CONCORD tiles
- Samsung smart WIFI enabled front load full size washer & dryers
- Private balcony
- Oversized private terrace
- Walk-in master closet fully built out
- NEST digital programable thermostats
- Digital keyless entry
- Designer lighting fixtures

**CHEF-CALIBER KITCHENS**

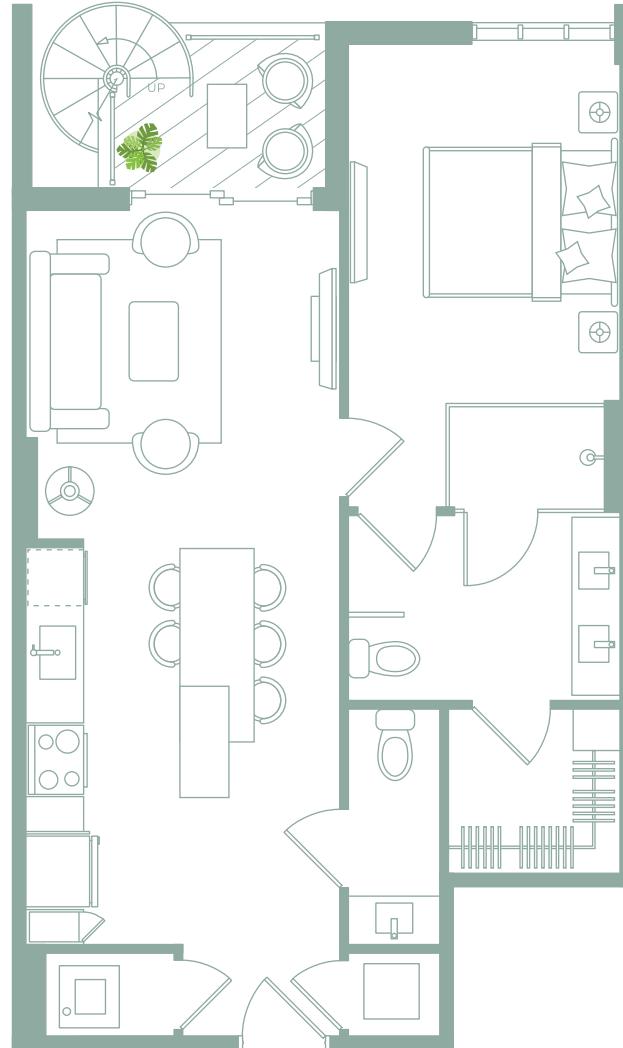
- White COMPAC quartz countertops
- Italian kitchen cabinetry
- Extended quartz island with dining table
- USB charging station
- Full white quartz backsplash
- Pantry
- Multi-feature kitchen faucet
- Samsung **Family Hub** touch screen smart refrigerator
- Samsung smart WIFI enabled with Bluetooth connectivity high efficiency appliances

**SPA INSPIRED BATHS**

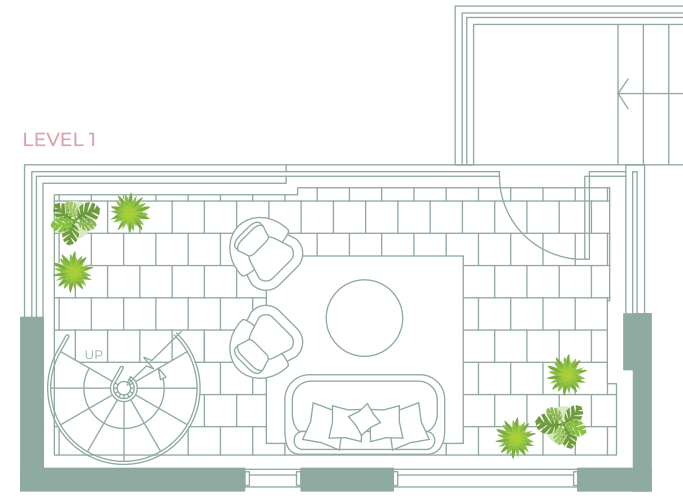
- Contemporary bath hardware
- Italian vanity with cultured white marble countertop
- Front lit mirror
- Artistically designed full height porcelain wet walls in shower
- Open concept bathroom
- Frameless glass shower enclosure
- Rain shower and hand shower in master bath
- Powder room
- Double sink in master bath

\* All these units come with 2 parking spaces

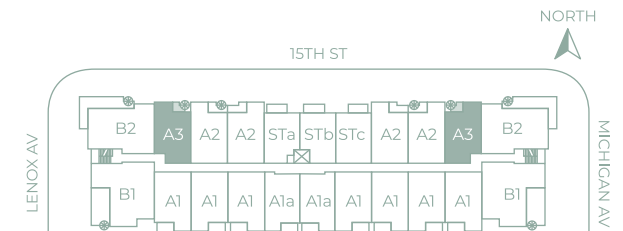
LEVEL 2



LEVEL 1



UNIT A3	LEVEL 2
<b>1 BEDROOM / 1.5 BATH</b>	
Gross a/c Area	714 Sq. Ft.
Balcony	39 Sq. Ft.
Terrace	238 Sq. Ft.
<b>TOTAL</b>	<b>991 Sq. Ft.</b>



Any renderings and depictions are conceptual only and are for the convenience of reference. They should not be relied upon as representations, express or implied, of the final detail of the Units nor the views from any of the Units. ORAL REPRESENTATIONS CANNOT BE RELIED UPON AS CORRECTLY STATING REPRESENTATIONS OF THE DEVELOPER. FOR CORRECT REPRESENTATIONS, MAKE REFERENCE TO THIS BROCHURE AND TO THE DOCUMENTS REQUIRED BY 718.503, FLORIDA STATUTES, TO BE FURNISHED BY A DEVELOPER TO A BUYER OR LESSEE.



SOUTH BEACH

**RESIDENCE AMENITIES**

- Spacious floorplan
- 12 x 24 white porcelain CONCORD tiles
- Samsung smart WIFI enabled front load full size washer & dryers
- Private balcony
- Private terrace
- Walk-in master closet fully built out
- NEST digital programable thermostats
- Digital keyless entry
- Designer lighting fixtures

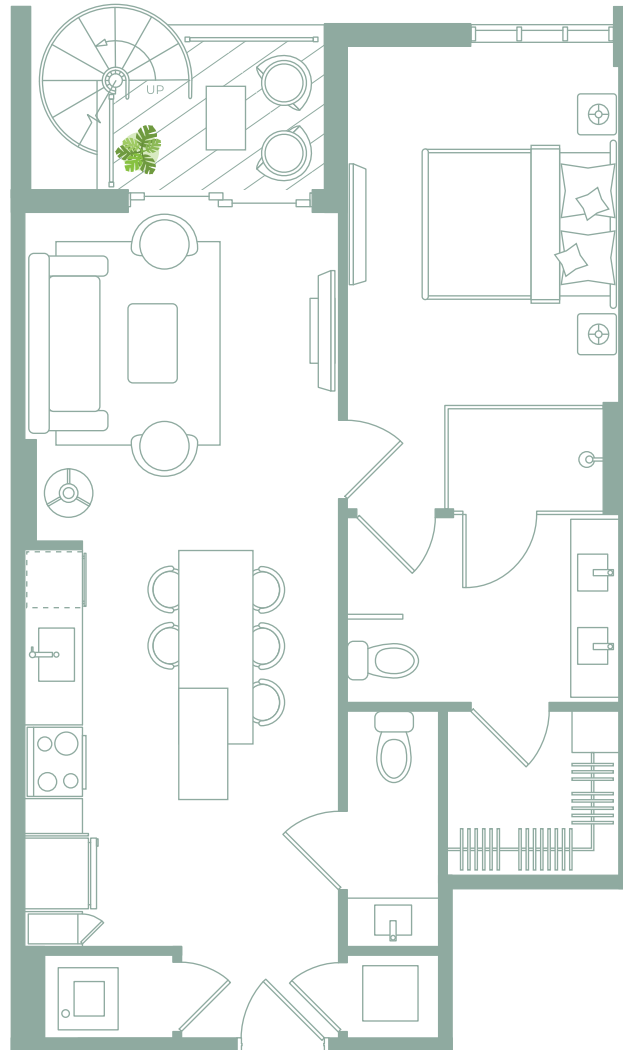
**CHEF-CALIBER KITCHENS**

- White COMPAC quartz countertops
- Italian kitchen cabinetry
- Extended quartz island with dining table
- USB charging station
- Full white quartz backsplash
- Pantry
- Multi-feature kitchen faucet
- Samsung **Family Hub** touch screen smart refrigerator
- Samsung smart WIFI enabled with Bluetooth connectivity high efficiency appliances

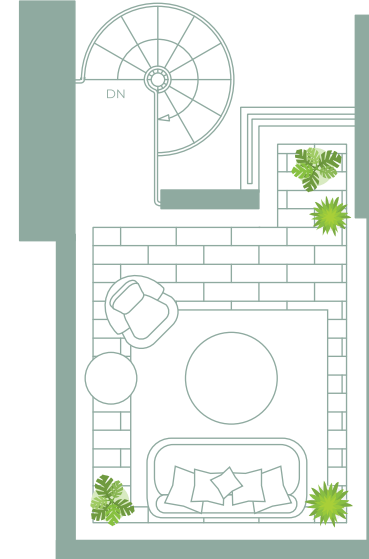
**SPA INSPIRED BATHS**

- Contemporary bath hardware
- Italian vanity with cultured white marble countertop
- Front lit mirror
- Artistically designed full height porcelain wet walls in shower
- Open concept bathroom
- Frameless glass shower enclosure
- Rain shower and hand shower in master bath
- Powder room
- Double sink in master bath

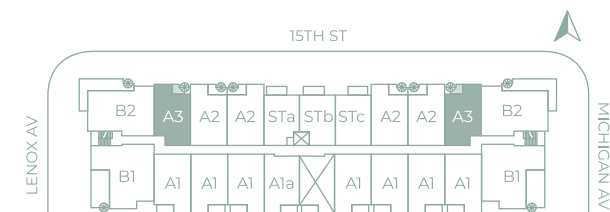
LEVEL 3



LEVEL 4



UNIT A3	LEVEL 3
<b>1 BEDROOM / 1.5 BATH</b>	
Gross a/c Area	714 Sq. Ft.
Balcony	49 Sq. Ft.
Terrace	158 Sq. Ft.
<b>TOTAL</b>	<b>921 Sq. Ft.</b>



**SHOMA**

Any renderings and depictions are conceptual only and are for the convenience of reference. They should not be relied upon as representations, express or implied, of the final detail of the Units nor the views from any of the Units. ORAL REPRESENTATIONS CANNOT BE RELIED UPON AS CORRECTLY STATING REPRESENTATIONS OF THE DEVELOPER. FOR CORRECT REPRESENTATIONS, MAKE REFERENCE TO THIS BROCHURE AND TO THE DOCUMENTS REQUIRED BY 718.503, FLORIDA STATUTES, TO BE FURNISHED BY A DEVELOPER TO A BUYER OR LESSEE.



SOUTH BEACH

**RESIDENCE AMENITIES**

- Spacious floorplan
- 12 x 24 white porcelain CONCORD tiles
- Samsung smart WIFI enabled front load full size washer & dryers
- Private balcony
- Private terrace
- Oversized walk-in master closet fully built out
- NEST digital programable thermostats
- Digital keyless entry
- Designer lighting fixtures

**CHEF-CALIBER KITCHENS**

- White COMPAC quartz countertops
- Italian kitchen cabinetry
- Extended quartz island with dining table
- USB charging station
- Full white quartz backsplash
- Pantry
- Multi-feature kitchen faucet
- Samsung **Family Hub** touch screen smart refrigerator
- Samsung smart WIFI enabled with Bluetooth connectivity high efficiency appliances

**SPA INSPIRED BATHS**

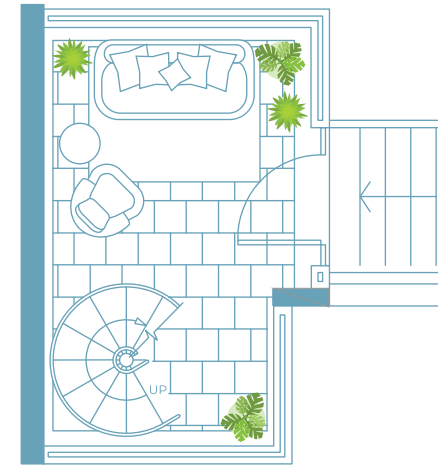
- Contemporary bath hardware
- Italian vanity with cultured white marble countertop
- Front lit mirror
- Artistically designed full height porcelain wet walls in shower
- Open concept bathroom
- Frameless glass shower enclosure
- Rain shower and hand shower in master bath
- Double sink in master bath
- Oversized soaking bathtub

\* All B units come with 2 parking spaces

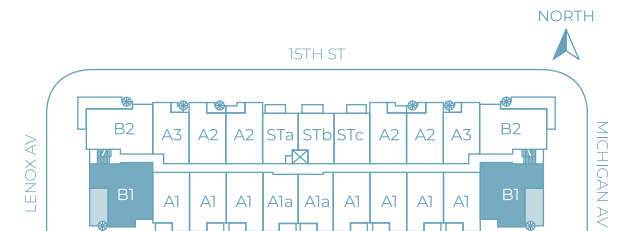
LEVEL 2



LEVEL 1



UNIT B1	LEVEL 2
<b>2 BEDROOMS / 2 BATHS</b>	
Gross a/c Area	1190 Sq. Ft.
Balcony	235 Sq. Ft.
Terrace	171 Sq. Ft.
<b>TOTAL</b>	<b>1596 Sq. Ft.</b>



Any renderings and depictions are conceptual only and are for the convenience of reference. They should not be relied upon as representations, express or implied, of the final detail of the Units nor the views from any of the Units. ORAL REPRESENTATIONS CANNOT BE RELIED UPON AS CORRECTLY STATING REPRESENTATIONS OF THE DEVELOPER. FOR CORRECT REPRESENTATIONS, MAKE REFERENCE TO THIS BROCHURE AND TO THE DOCUMENTS REQUIRED BY 718.503, FLORIDA STATUTES, TO BE FURNISHED BY A DEVELOPER TO A BUYER OR LESSEE.



SOUTH BEACH

**RESIDENCE AMENITIES**

- Spacious floorplan
- 12 x 24 white porcelain CONCORD tiles
- Samsung smart WIFI enabled front load full size washer & dryers
- Private balcony
- Oversized private terrace
- Oversized walk-in master closet fully built out
- NEST digital programable thermostats
- Digital keyless entry
- Designer lighting fixtures

**CHEF-CALIBER KITCHENS**

- White COMPAC quartz countertops
- Italian kitchen cabinetry
- Extended quartz island with dining table
- USB charging station
- Full white quartz backsplash
- Pantry
- Multi-feature kitchen faucet
- Samsung **Family Hub** touch screen smart refrigerator
- Samsung smart WIFI enabled with Bluetooth connectivity high efficiency appliances

**SPA INSPIRED BATHS**

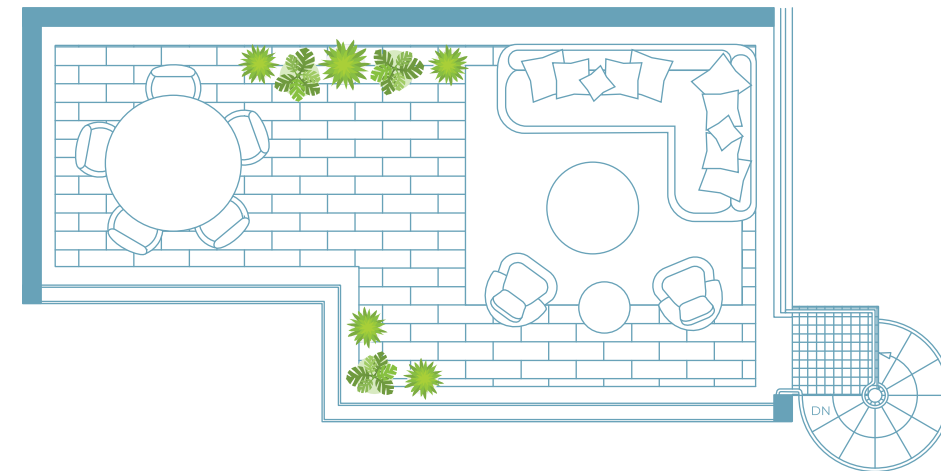
- Contemporary bath hardware
- Italian vanity with cultured white marble countertop
- Front lit mirror
- Artistically designed full height porcelain wet walls in shower
- Open concept bathroom
- Frameless glass shower enclosure
- Rain shower and hand shower in master bath
- Double sink in master bath
- Oversized soaking bathtub

\* All B units come with 2 parking spaces

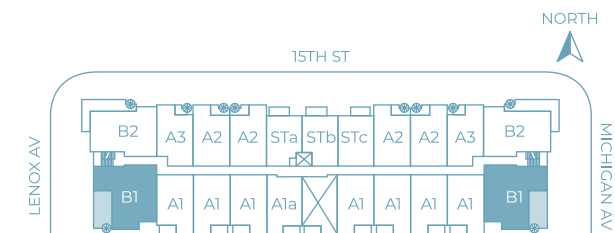
LEVEL 3



LEVEL 4



UNIT B1	LEVEL 3
<b>2 BEDROOMS / 2 BATHS</b>	
Gross a/c Area	1190 Sq. Ft.
Balcony	236 Sq. Ft.
Terrace	358 Sq. Ft.
<b>TOTAL</b>	<b>1784 Sq. Ft.</b>



Any renderings and depictions are conceptual only and are for the convenience of reference. They should not be relied upon as representations, express or implied, of the final detail of the Units nor the views from any of the Units. ORAL REPRESENTATIONS CANNOT BE RELIED UPON AS CORRECTLY STATING REPRESENTATIONS OF THE DEVELOPER. FOR CORRECT REPRESENTATIONS, MAKE REFERENCE TO THIS BROCHURE AND TO THE DOCUMENTS REQUIRED BY 718.503, FLORIDA STATUTES, TO BE FURNISHED BY A DEVELOPER TO A BUYER OR LESSEE.



SOUTH BEACH

**RESIDENCE AMENITIES**

- Spacious floorplan
- 12 x 24 white porcelain CONCORD tiles
- Samsung smart WIFI enabled front load full size washer & dryers
- Private balcony
- Oversized private terrace
- Oversized walk-in master closet fully built out
- NEST digital programable thermostats
- Digital keyless entry
- Designer lighting fixtures

**CHEF-CALIBER KITCHENS**

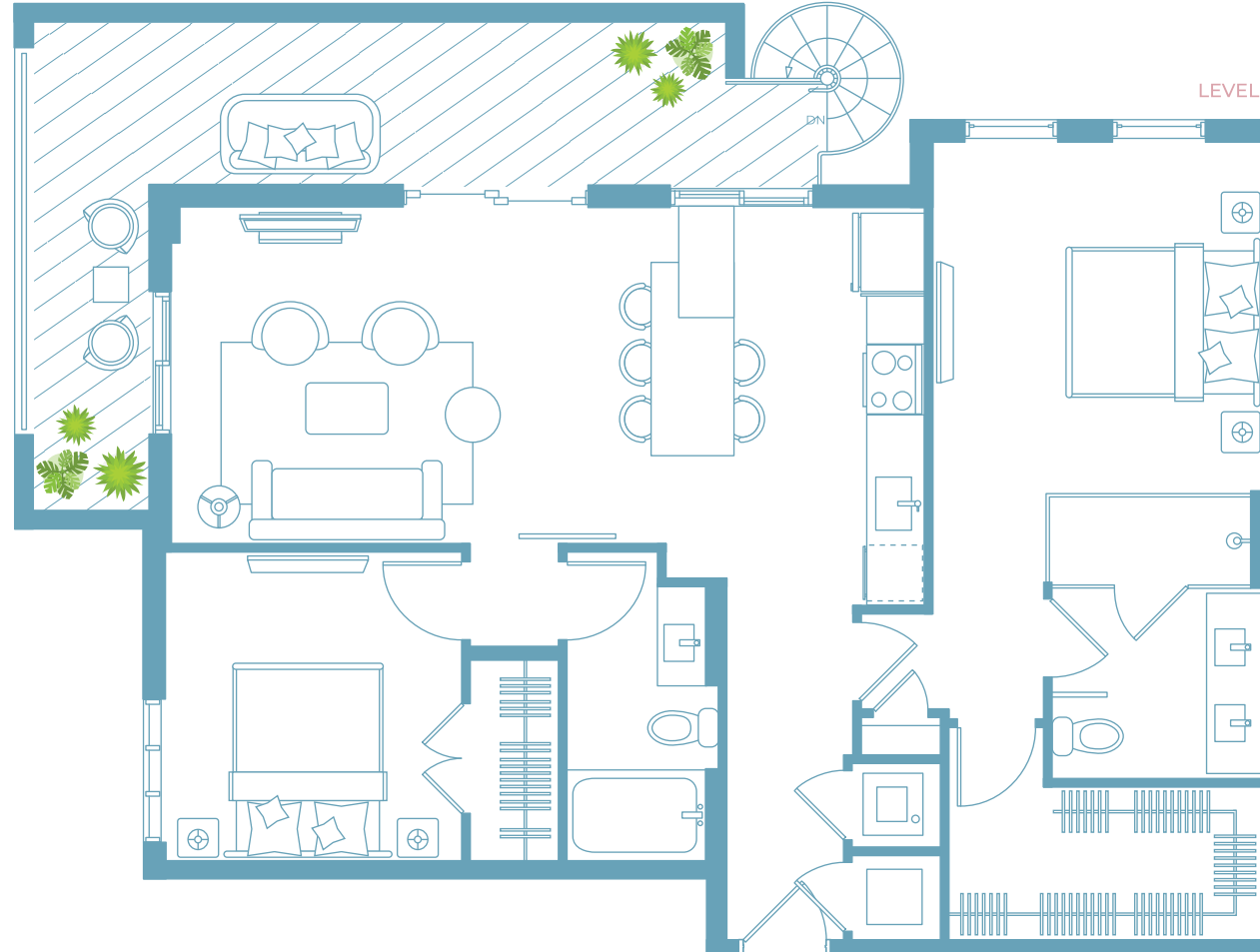
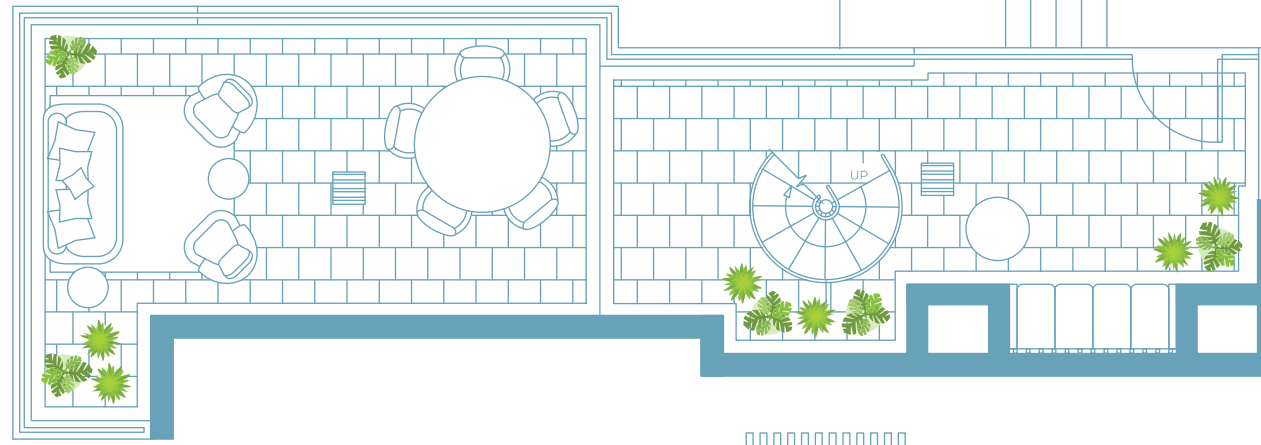
- White COMPAC quartz countertops
- Italian kitchen cabinetry
- Extended quartz island with dining table
- USB charging station
- Full white quartz backsplash
- Pantry
- Multi-feature kitchen faucet
- Samsung **Family Hub** touch screen smart refrigerator
- Samsung smart WIFI enabled with Bluetooth connectivity high efficiency appliances

**SPA INSPIRED BATHS**

- Contemporary bath hardware
- Italian vanity with cultured white marble countertop
- Front lit mirror
- Artistically designed full height porcelain wet walls in shower
- Open concept bathroom
- Frameless glass shower enclosure
- Rain shower and hand shower in master bath
- Double sink in master bath
- Oversized soaking bathtub

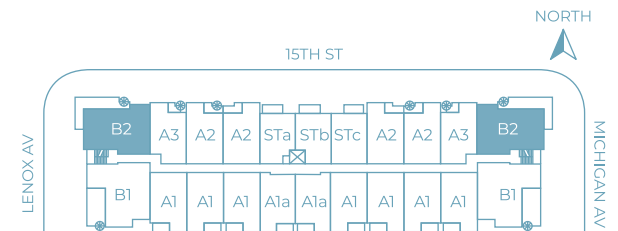
\* All B units come with 2 parking spaces

LEVEL 1



LEVEL 2

UNIT B2	LEVEL 2
<b>2 BEDROOMS / 2 BATHS</b>	
Gross a/c Area	1101 Sq. Ft.
Balcony	249 Sq. Ft.
Terrace	505 Sq. Ft.
<b>TOTAL</b>	<b>1855 Sq. Ft.</b>



Any renderings and depictions are conceptual only and are for the convenience of reference. They should not be relied upon as representations, express or implied, of the final detail of the Units nor the views from any of the Units. ORAL REPRESENTATIONS CANNOT BE RELIED UPON AS CORRECTLY STATING REPRESENTATIONS OF THE DEVELOPER. FOR CORRECT REPRESENTATIONS, MAKE REFERENCE TO THIS BROCHURE AND TO THE DOCUMENTS REQUIRED BY 718.503, FLORIDA STATUTES, TO BE FURNISHED BY A DEVELOPER TO A BUYER OR LESSEE.



SOUTH BEACH

**RESIDENCE AMENITIES**

- Spacious floorplan
- 12 x 24 white porcelain CONCORD tiles
- Samsung smart WIFI enabled front load full size washer & dryers
- Private balcony
- Oversized private terrace
- Oversized walk-in master closet fully built out
- NEST digital programable thermostats
- Digital keyless entry
- Designer lighting fixtures

**CHEF-CALIBER KITCHENS**

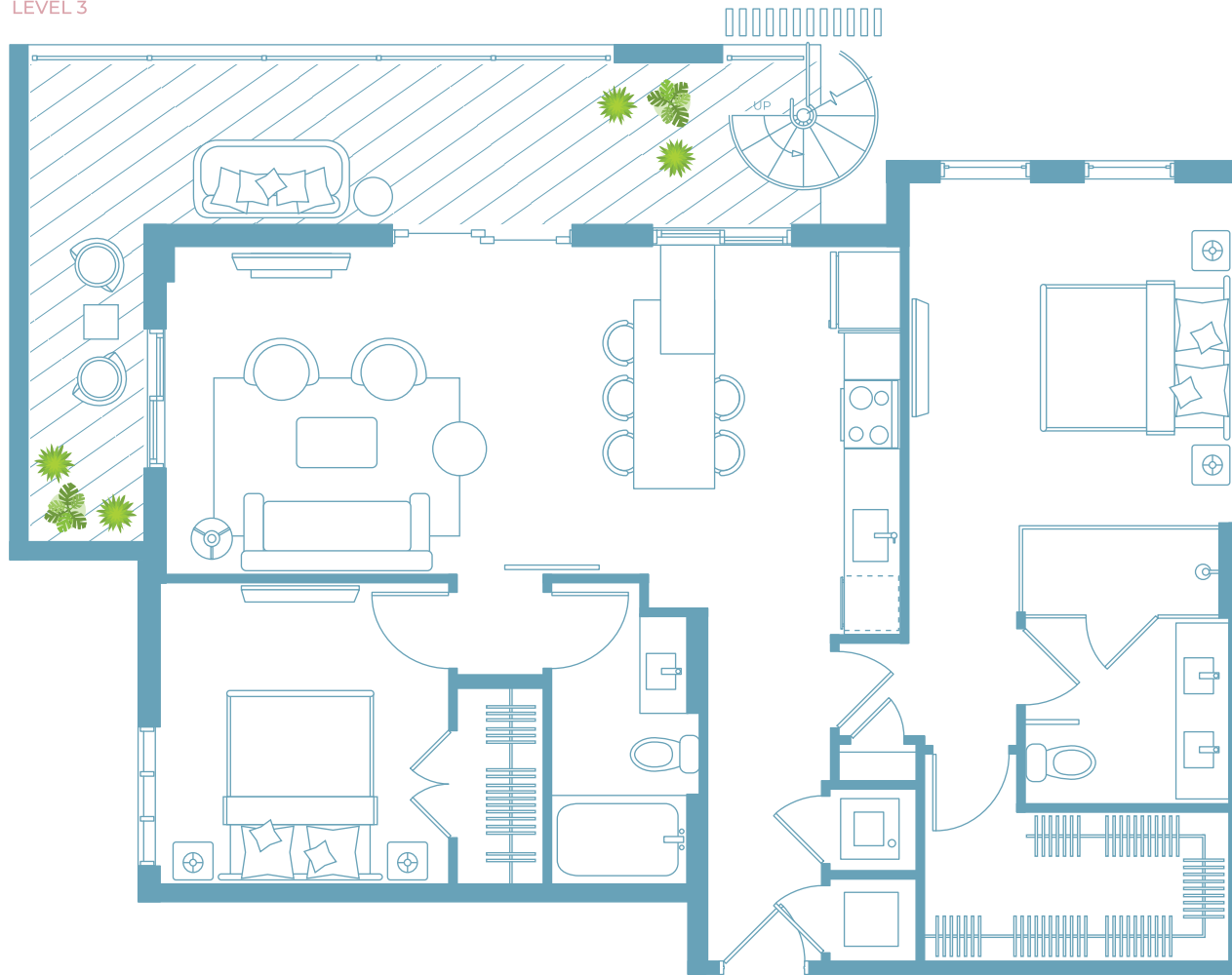
- White COMPAC quartz countertops
- Italian kitchen cabinetry
- Extended quartz island with dining table
- USB charging station
- Full white quartz backsplash
- Pantry
- Multi-feature kitchen faucet
- Samsung **Family Hub** touch screen smart refrigerator
- Samsung smart WIFI enabled with Bluetooth connectivity high efficiency appliances

**SPA INSPIRED BATHS**

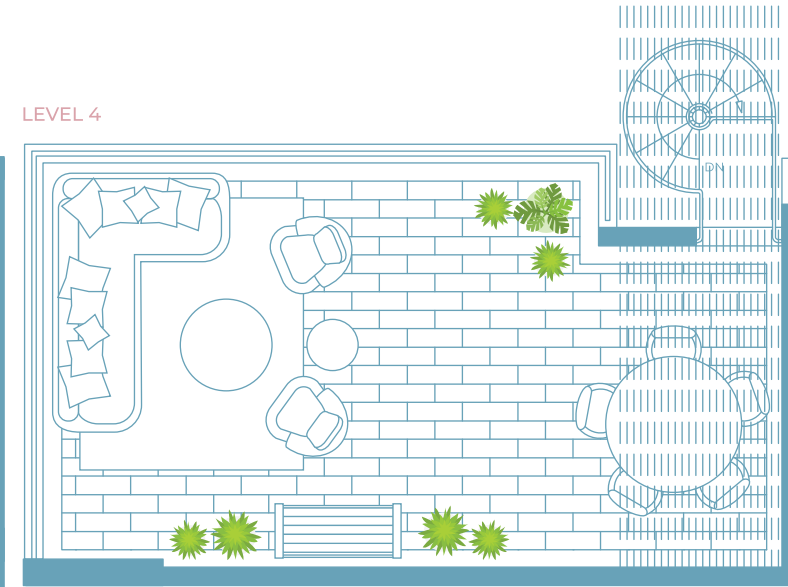
- Contemporary bath hardware
- Italian vanity with cultured white marble countertop
- Front lit mirror
- Artistically designed full height porcelain wet walls in shower
- Open concept bathroom
- Frameless glass shower enclosure
- Rain shower and hand shower in master bath
- Double sink in master bath
- Oversized soaking bathtub

\* All B units come with 2 parking spaces

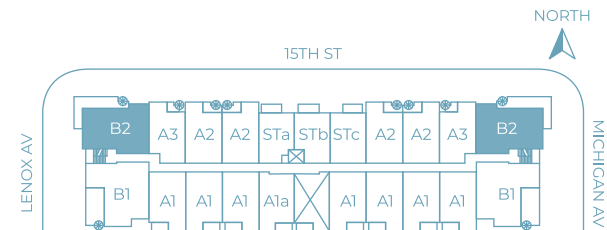
LEVEL 3



LEVEL 4



UNIT B2	LEVEL 3
<b>2 BEDROOMS / 2 BATHS</b>	
Gross a/c Area	1101 Sq. Ft.
Balcony	262 Sq. Ft.
Terrace	413 Sq. Ft.
<b>TOTAL</b>	<b>1776 Sq. Ft.</b>



Any renderings and depictions are conceptual only and are for the convenience of reference. They should not be relied upon as representations, express or implied, of the final detail of the Units nor the views from any of the Units. ORAL REPRESENTATIONS CANNOT BE RELIED UPON AS CORRECTLY STATING REPRESENTATIONS OF THE DEVELOPER. FOR CORRECT REPRESENTATIONS, MAKE REFERENCE TO THIS BROCHURE AND TO THE DOCUMENTS REQUIRED BY 718.503, FLORIDA STATUTES, TO BE FURNISHED BY A DEVELOPER TO A BUYER OR LESSEE.