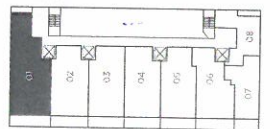
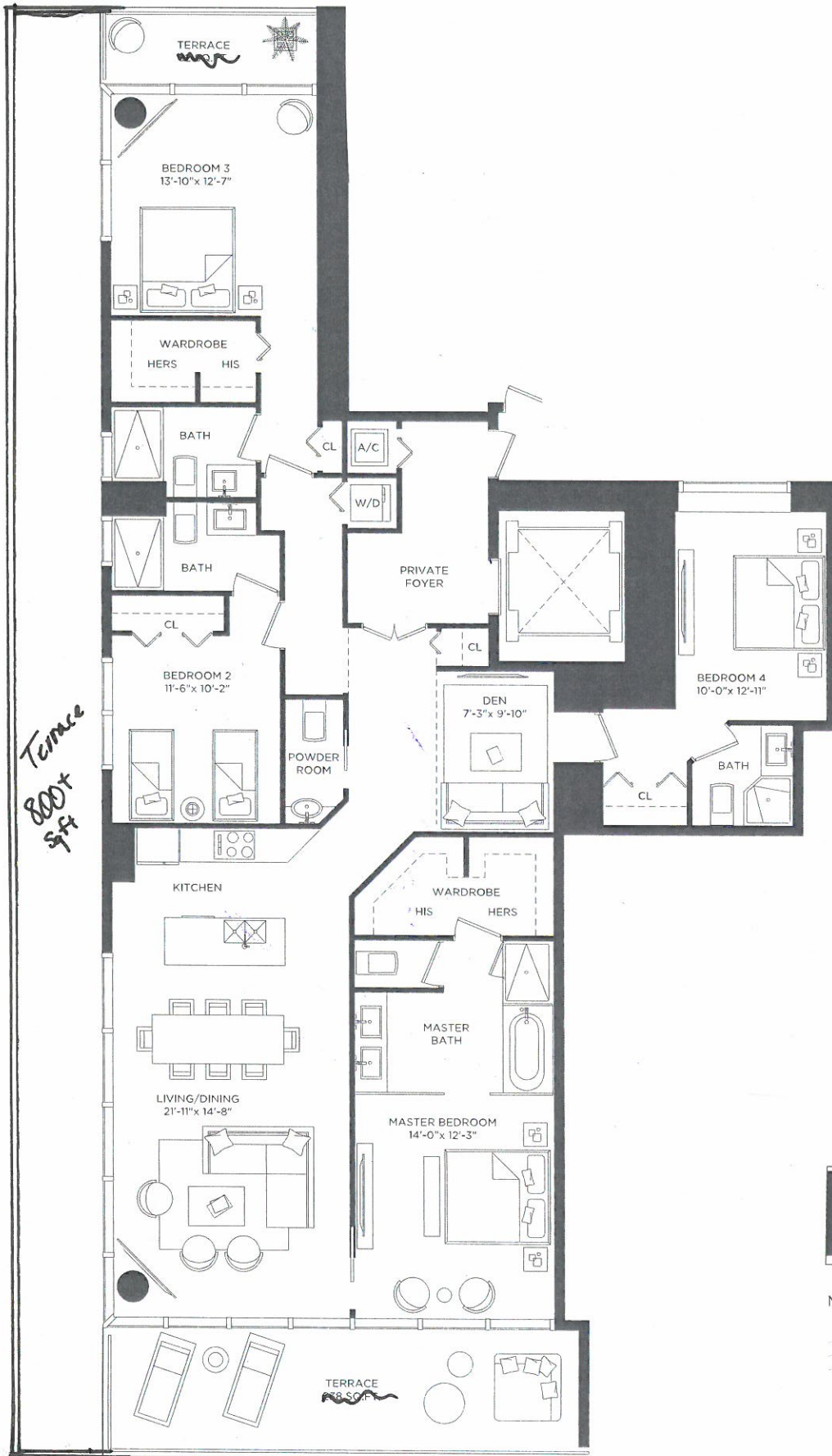


GRANDPARAISO

RESIDENCES FLOORPLANS

DRAFT - NOT FINAL



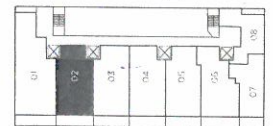
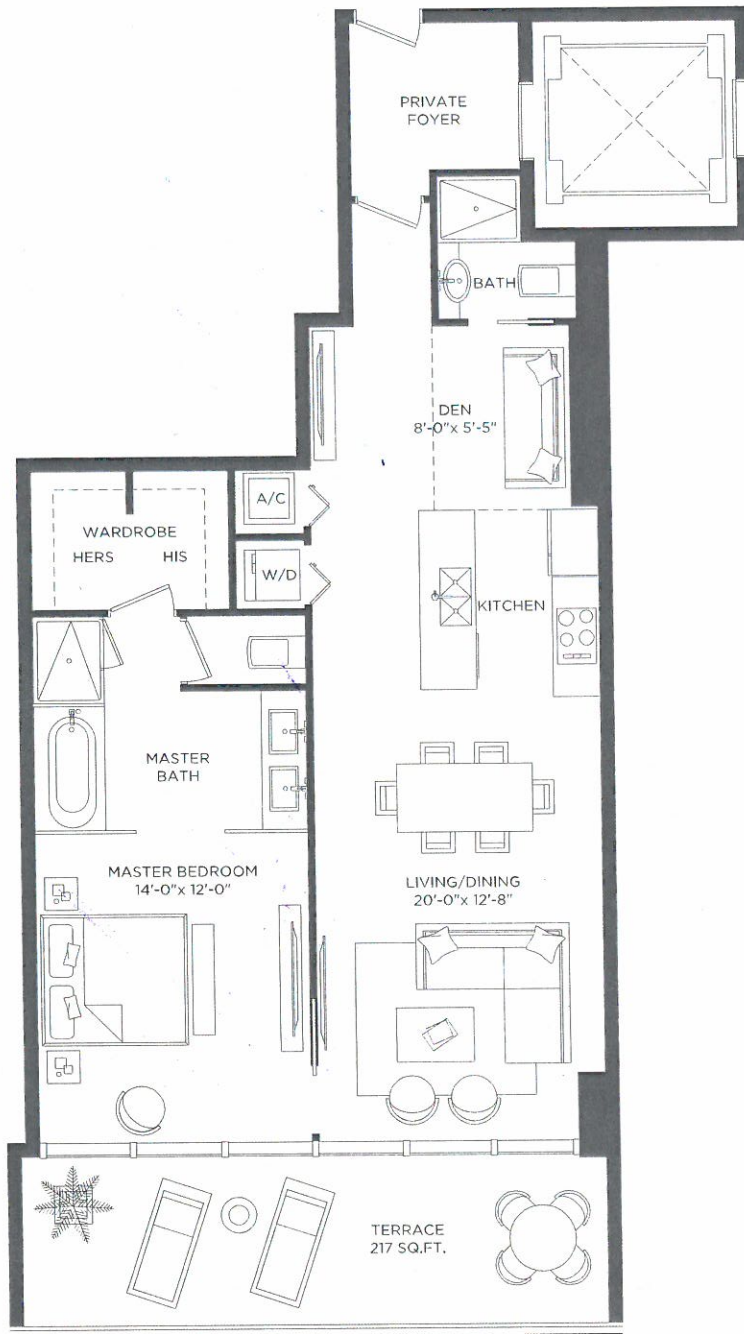
RESIDENCE 01
 LEVELS 28 TO 49
 4 BEDROOMS 4 1/2 BATHS + DEN

A/C INTERIOR AREA
 TERRACE AREA
 TOTAL RESIDENCE

\pm 2250	SQ.FT.	208.66	SQ.M.
\pm 800	SQ.FT.	27.87	SQ.M.
	2,546	SQ.FT.	236.53
			SQ.M.

Stated dimensions are measured to the exterior boundaries of the exterior walls and the centerline of interior demising walls and in fact vary from the dimensions that would be determined by using the description and definition of the "Unit" set forth in the Declaration (which generally only includes the interior airspace between the perimeter walls and excludes interior structural components). For your reference, the area of the Unit, determined in accordance with those defined unit boundaries, is - or - 1,914 sq. ft. for units 01. Note that measurements of rooms set forth on this floor plan are generally taken at the greatest points of each given room (as if the room were a perfect rectangle), without regard for any cutouts. Accordingly, the area of the actual room will typically be smaller than the product obtained by multiplying the stated length times width. All dimensions are approximate and may vary with actual construction, and all floor plans and development plans are subject to change.

DRAFT - NOT FINAL




N ▸

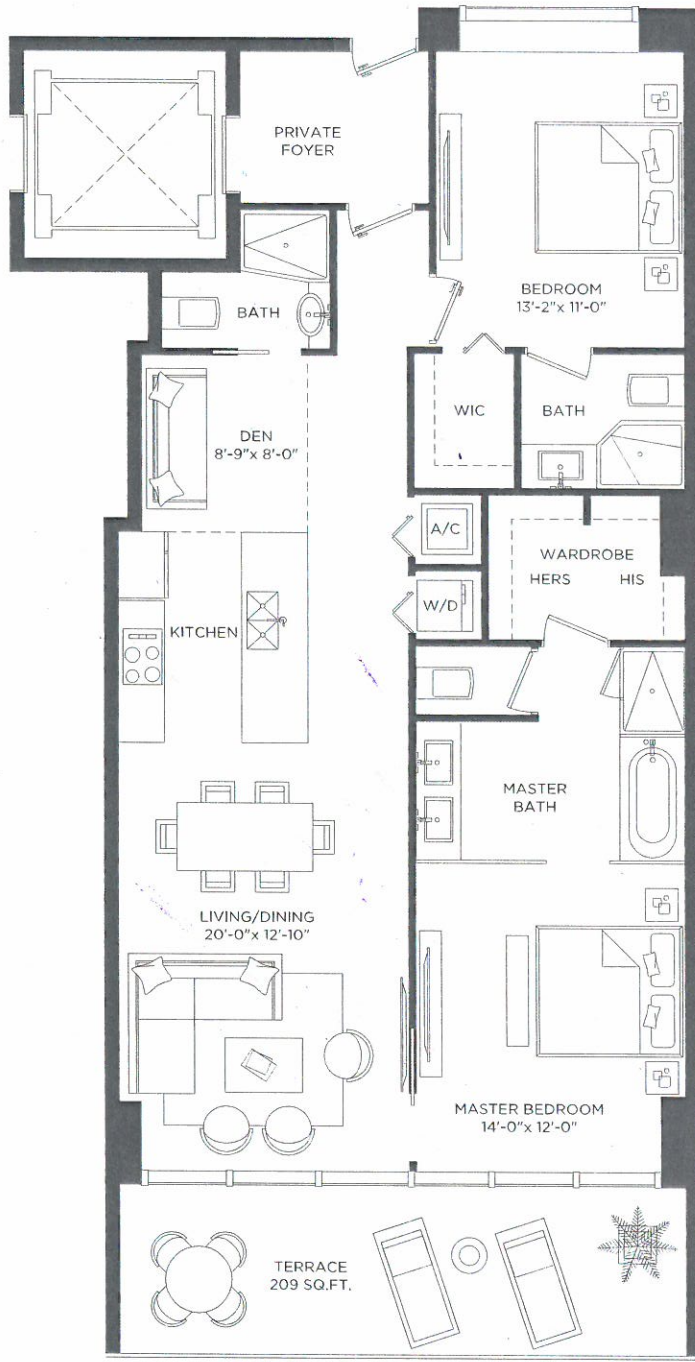


RESIDENCE 02
 LEVELS 28 TO 49
 1 BEDROOM 2 BATHS + DEN

A/C INTERIOR AREA	1,062 SQ.FT.	98.66 SQ.M.
TERRACE AREA	217 SQ.FT.	20.16 SQ.M.
TOTAL RESIDENCE	1,279 SQ.FT.	118.82 SQ.M.

 Stated dimensions are measured to the exterior boundaries of the exterior walls and the centerline of interior demising walls and in fact vary from the dimensions that would be determined by using the description and definition of the "Unit" set forth in the Declaration (which generally only includes the interior airspace between the perimeter walls and excludes interior structural components). For your reference, the area of the Unit, determined in accordance with those defined unit boundaries, is + or - 235 sq. ft. for units 02. Note that measurements of rooms set forth on this floor plan are generally taken at the greatest points of each given room (as if the room were a perfect rectangle), without regard for any cutouts. Accordingly, the area of the actual room will typically be smaller than the product obtained by multiplying the stated length times width. All dimensions are approximate and may vary with actual construction, and all floor plans and development plans are subject to change.

DRAFT - NOT FINAL

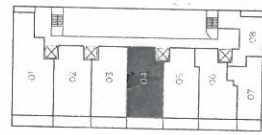
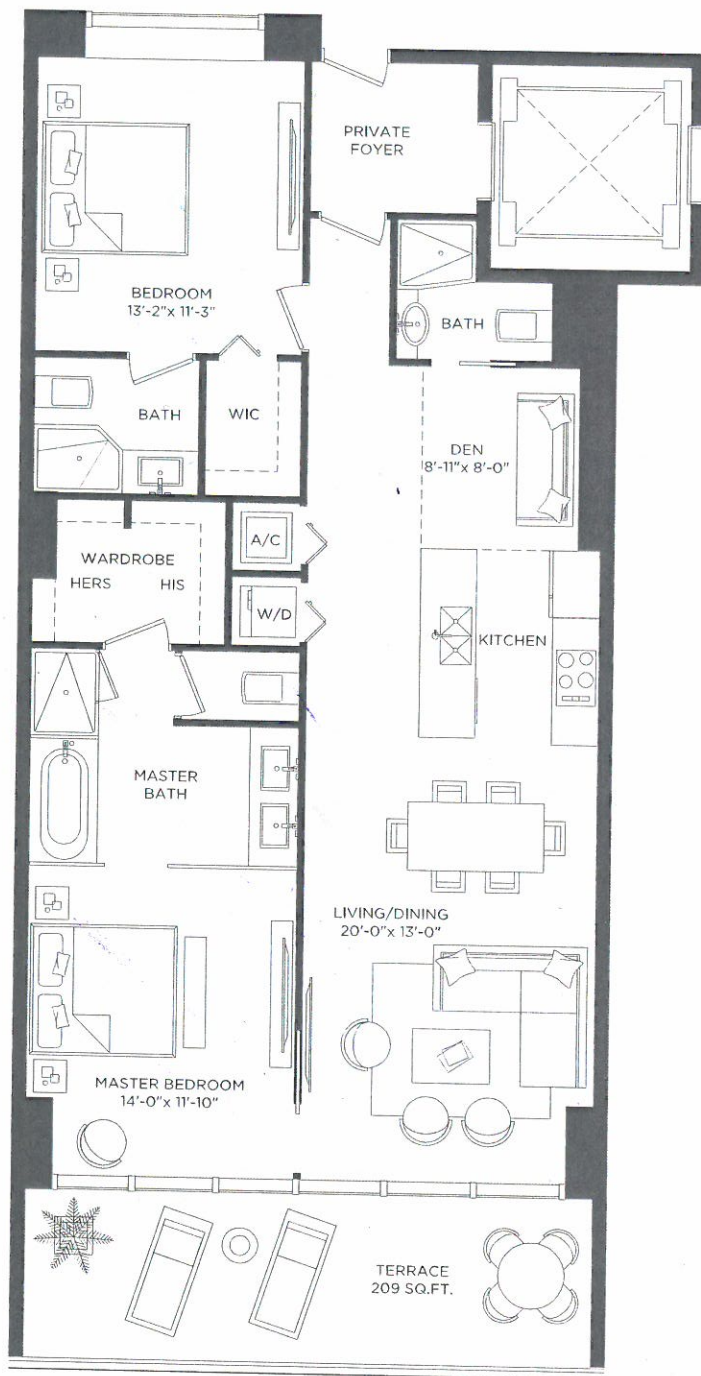


RESIDENCE 03
 2 BEDROOMS 3 BATHS + DEN

A/C INTERIOR AREA	1,301 SQ.FT.	120.86 SQ.M.
TERRACE AREA	209 SQ.FT.	19.41 SQ.M.
TOTAL RESIDENCE	1,510 SQ.FT.	140.27 SQ.M.

Stated dimensions are measured to the exterior boundaries of the exterior walls and the centerline of interior demising walls and in fact vary from the dimensions that would be determined by using the description and definition of the "Unit" set forth in the Declaration (which generally only includes the interior airspace between the perimeter walls and excludes interior structural components). For your reference, the area of the Unit, determined in accordance with those defined unit boundaries, is - or - 1,179 sq. ft. for units 03. Note that measurements of rooms set forth on this floor plan are generally taken at the greatest points of each given room (as if the room were a perfect rectangle), without regard for any cutouts. Accordingly, the area of the actual room will typically be smaller than the product obtained by multiplying the stated length times width. All dimensions are approximate and may vary with actual construction, and all floor plans and development plans are subject to change.

DRAFT - NOT FINAL

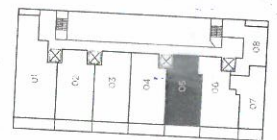
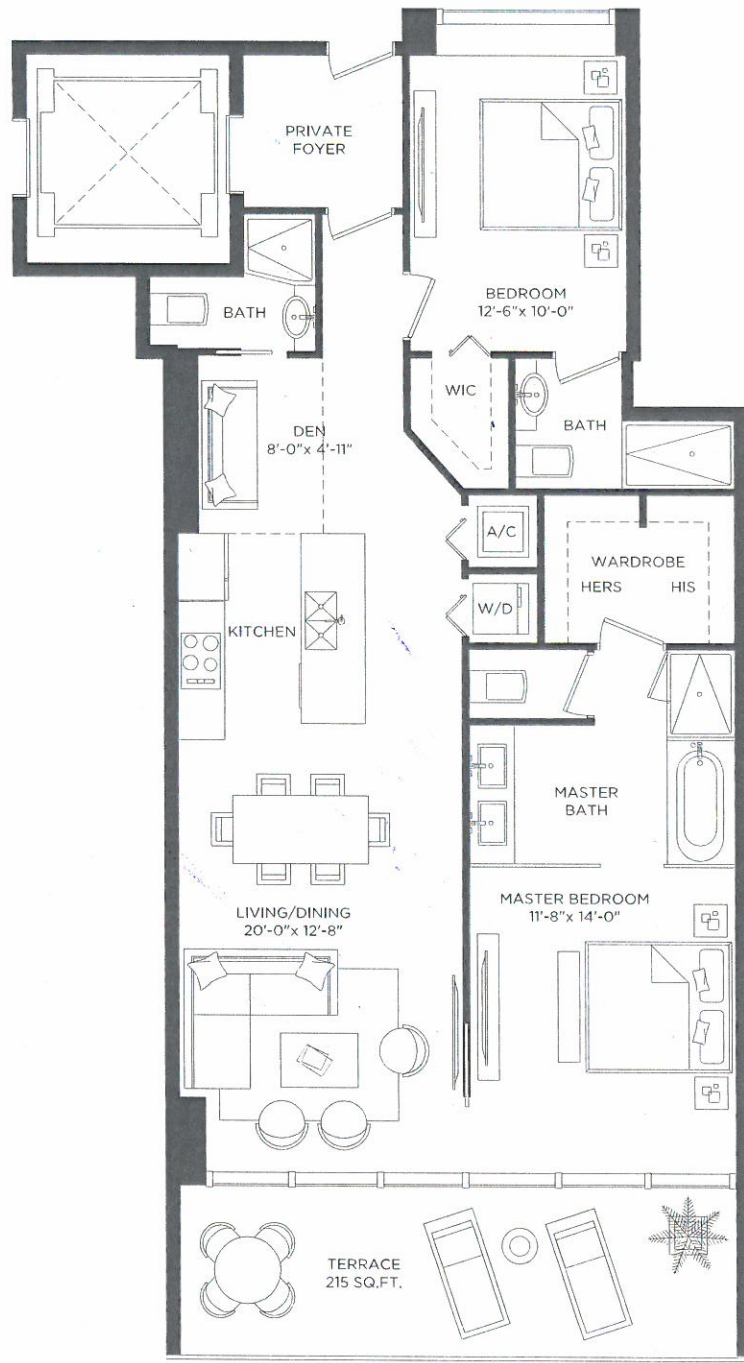


RESIDENCE 04
 2 BEDROOMS 3 BATHS + DEN

A/C INTERIOR AREA	1,301 SQ.FT.	120.86 SQ.M.
TERRACE AREA	209 SQ.FT.	19.41 SQ.M.
TOTAL RESIDENCE	1,510 SQ.FT.	140.27 SQ.M.

Stated dimensions are measured to the exterior boundaries of the exterior walls and the centerline of interior denising walls and in fact vary from the dimensions that would be determined by using the description and definition of the "Unit" set forth in the Declaration (which generally only includes the interior airspace between the perimeter walls and excludes interior structural components). For your reference, the area of the Unit, determined in accordance with those defined unit boundaries, is + or - 1,184 sq. ft. for units 04 Note that measurements of rooms set forth on this floor plan are generally taken at the greatest points of each given room (as if the room were a perfect rectangle), without regard for any cutouts. Accordingly, the area of the actual room will typically be smaller than the product obtained by multiplying the stated length times width. All dimensions are approximate and may vary with actual construction, and all floor plans and development plans are subject to change.

DRAFT - NOT FINAL



N

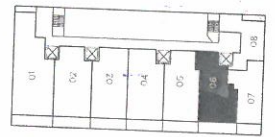
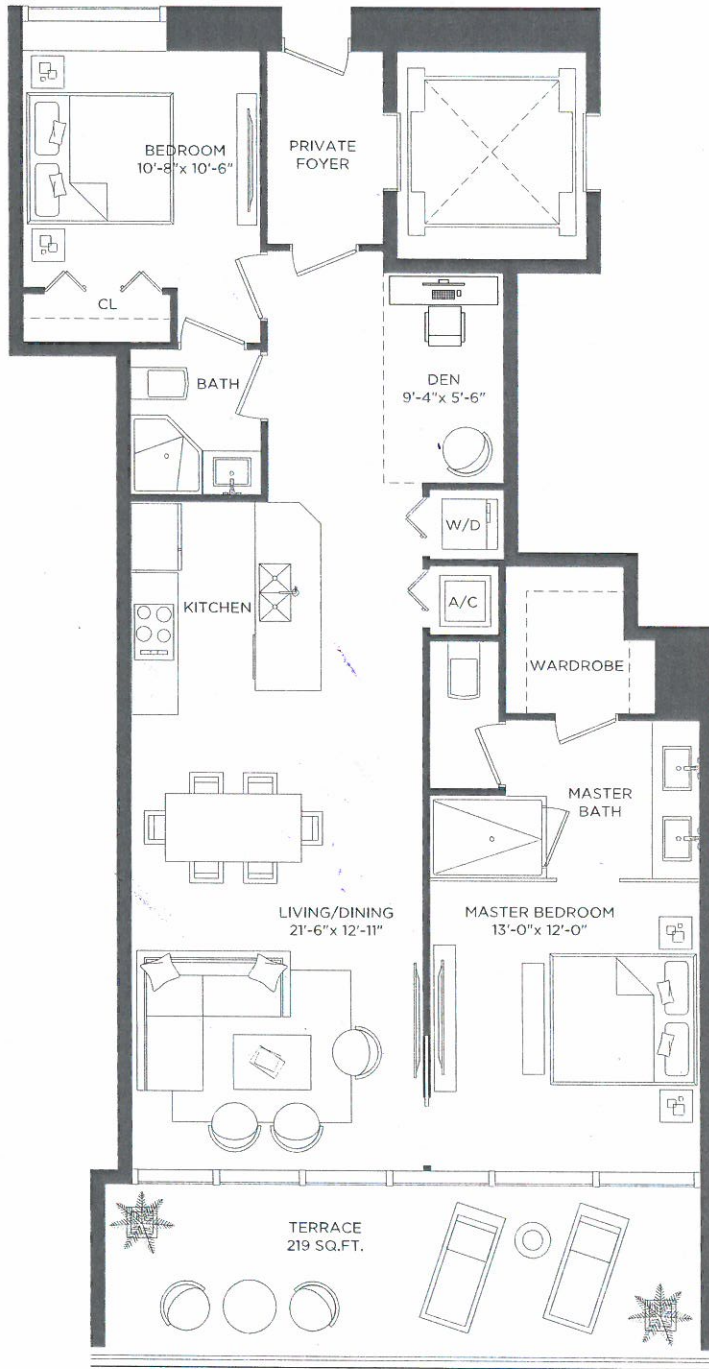
RESIDENCE 05

2 BEDROOMS 3 BATHS + DEN

A/C INTERIOR AREA	1,322 SQ.FT.	122.81 SQ.M.
TERRACE AREA	215 SQ.FT.	19.97 SQ.M.
TOTAL RESIDENCE	1,537 SQ.FT.	142.78 SQ.M.

Stated dimensions are measured to the exterior boundaries of the exterior walls and the centerline of interior demising walls and in fact vary from the dimensions that would be determined by using the description and definition of the "Unit" set forth in the Declaration (which generally only includes the interior airspace between the perimeter walls and excludes interior structural components). For your reference, the area of the Unit, determined in accordance with those defined unit boundaries, is - or - 1,129 sq. ft. for units 05. Note that measurements of rooms set forth on this floor plan are generally taken at the greatest points of each given room (as if the room were a perfect rectangle), without regard for any cutouts. Accordingly, the area of the actual room will typically be smaller than the product obtained by multiplying the stated length times width. All dimensions are approximate and may vary with actual construction, and all floor plans and development plans are subject to change.

DRAFT - NOT FINAL

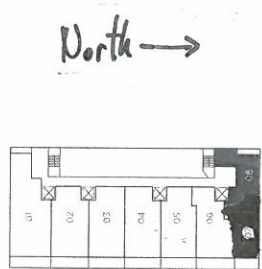
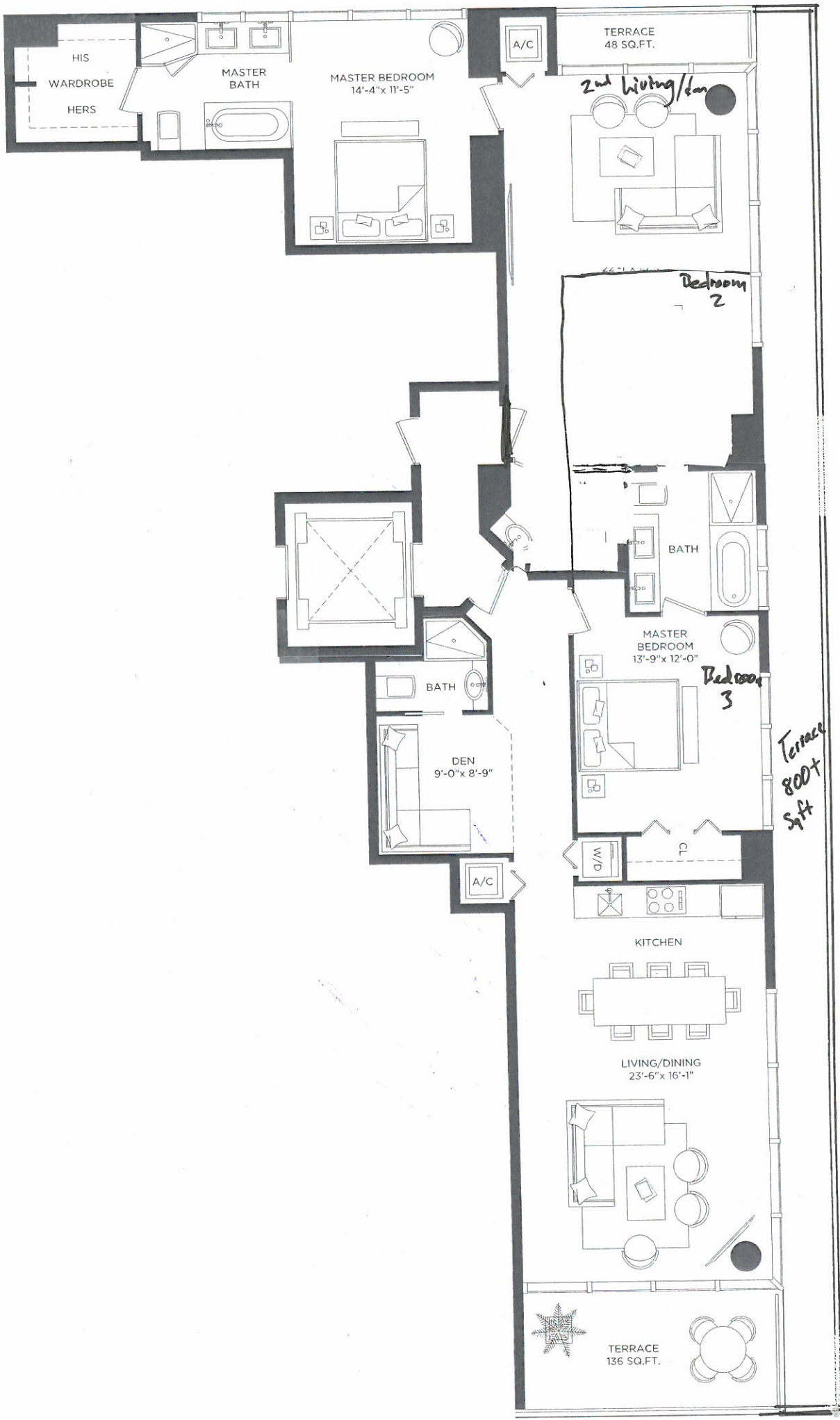


RESIDENCE 06
2 BEDROOMS 2 BATHS + DEN

A/C INTERIOR AREA	1,244 SQ.FT.	115.57 SQ.M.
TERRACE AREA	219 SQ.FT.	20.34 SQ.M.
TOTAL RESIDENCE	1,463 SQ.FT.	135.91 SQ.M.

Stated dimensions are measured to the exterior boundaries of the exterior walls and the centerline of interior demising walls and in fact vary from the dimensions that would be determined by using the description and definition of the "Unit" set forth in the Declaration (which generally only includes the interior airspace between the perimeter walls and excludes interior structural components). For your reference, the area of the Unit, determined in accordance with those defined unit boundaries, is - or - 1,058 sq. ft. for units 06. Note that measurements of rooms set forth on this floor plan are generally taken at the greatest points of each given room (as if the room were a perfect rectangle), without regard for any cutouts. Accordingly, the area of the actual room will typically be smaller than the product obtained by multiplying the stated length times width. All dimensions are approximate and may vary with actual construction, and all floor plans and development plans are subject to change.

DRAFT - NOT FINAL

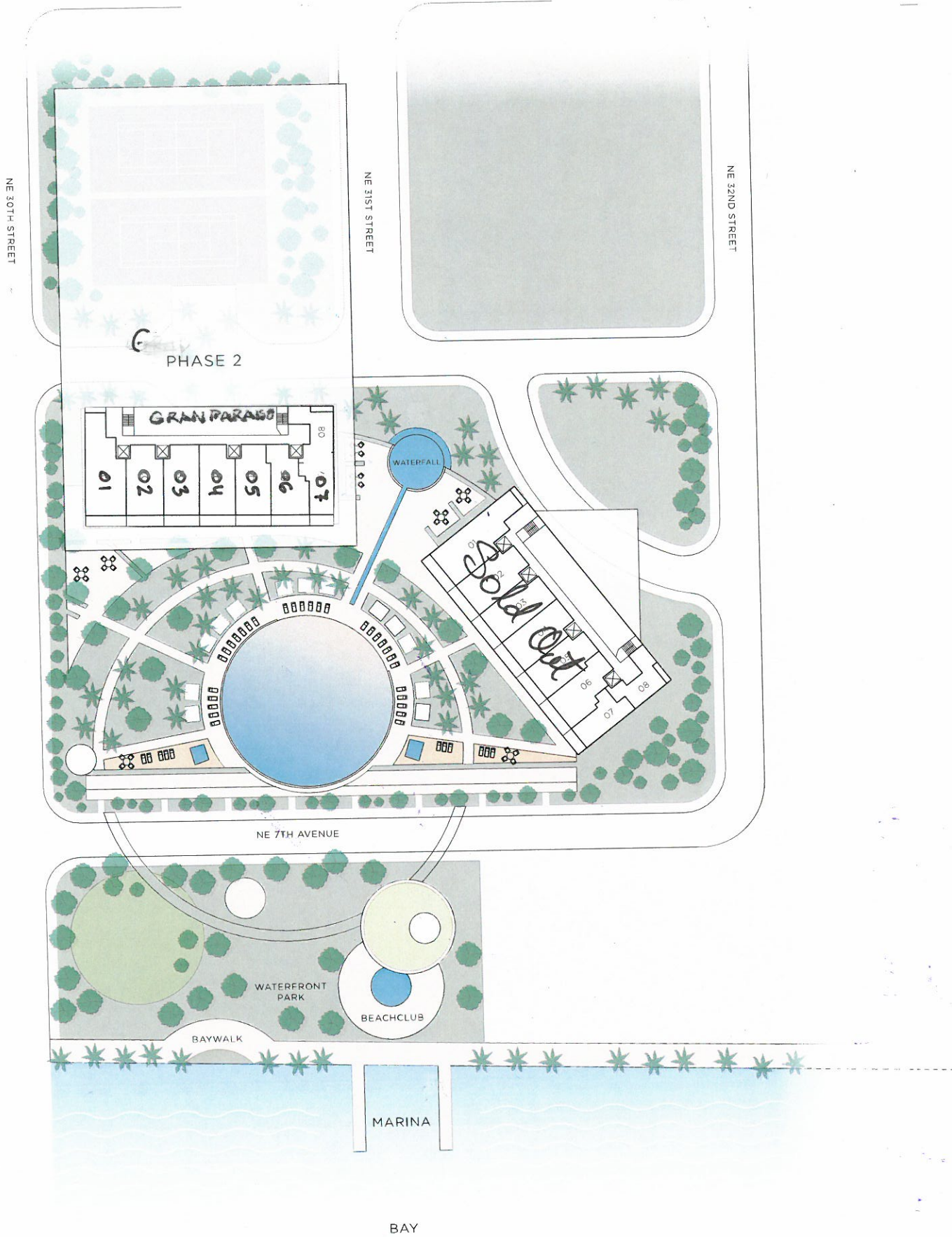


RESIDENCE 07
 3 BEDROOM 2 BATHS + DEN


A/C INTERIOR AREA	± 2000 SQ.FT.	93.27 SQ.M.
TERRACE AREA	± 800 SQ.FT.	12.63 SQ.M.
TOTAL RESIDENCE	± 1,140 SQ.FT.	105.90 SQ.M.

Stated dimensions are measured to the exterior boundaries of the exterior walls and the centerline of interior demising walls and in fact vary from the dimensions that would be determined by using the description and definition of the "Unit" set forth in the Declaration (which generally only includes the interior airspace between the perimeter walls and excludes interior structural components). For your reference, the area of the Unit, determined in accordance with those defined unit boundaries, is + or - 918 sq. ft. for units 07. Note that measurements of rooms set forth on this floor plan are generally taken at the greatest points of each given room (as if the room were a perfect rectangle), without regard for any cutouts. Accordingly, the area of the actual room will typically be smaller than the product obtained by multiplying the stated length times width. All dimensions are approximate and may vary with actual construction, and all floor plans and development plans are subject to change.

DRAFT - NOT FINAL



SITE PLAN

 Stated dimensions are measured to the exterior boundaries of the exterior walls and the centerline of interior demising walls and in fact vary from the dimensions that would be determined by using the description and definition of the "Unit" set forth in the Declaration (which generally only includes the interior airspace between the perimeter walls and excludes interior structural components). For your reference, the area of the Unit, determined in accordance with those defined unit boundaries, is + or - 1,914 sq. ft. for units 01, is + or - 1,694 sq. ft. for units 01 Mod, is + or - 935 sq. ft. for units 02, is + or - 1,161 sq. ft. for units 02 Mod, is + or - 1,179 sq. ft. for units 03, is + or - 1,184 sq. ft. for units 04, is + or - 1,129 sq. ft. for units 05, is + or - 1,058 sq. ft. for units 06, is + or - 918 sq. ft. for units 07, is + or - 743 sq. ft. for units 08. Note that measurements of rooms set forth on this floor plan are generally taken at the greatest points of each given room (as if the room were a perfect rectangle), without regard for any cutouts. Accordingly, the area of the actual room will typically be smaller than the product obtained by multiplying the stated length times width. All dimensions are approximate and may vary with actual construction, and all floor plans and development plans are subject to change.

DRAFT - NOT FINAL