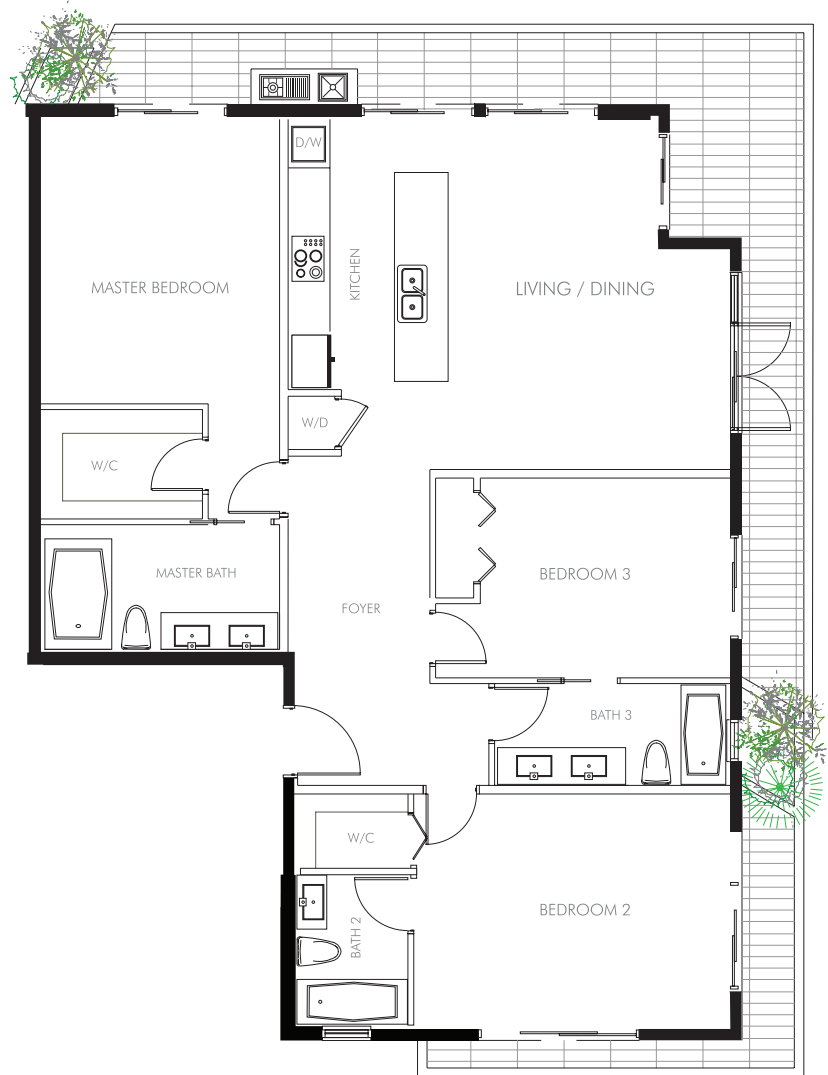
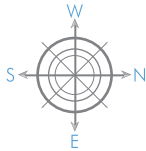





PEARL HOUSE
BAY HARBOR ISLANDS



LEVEL 2 RESIDENCE 201

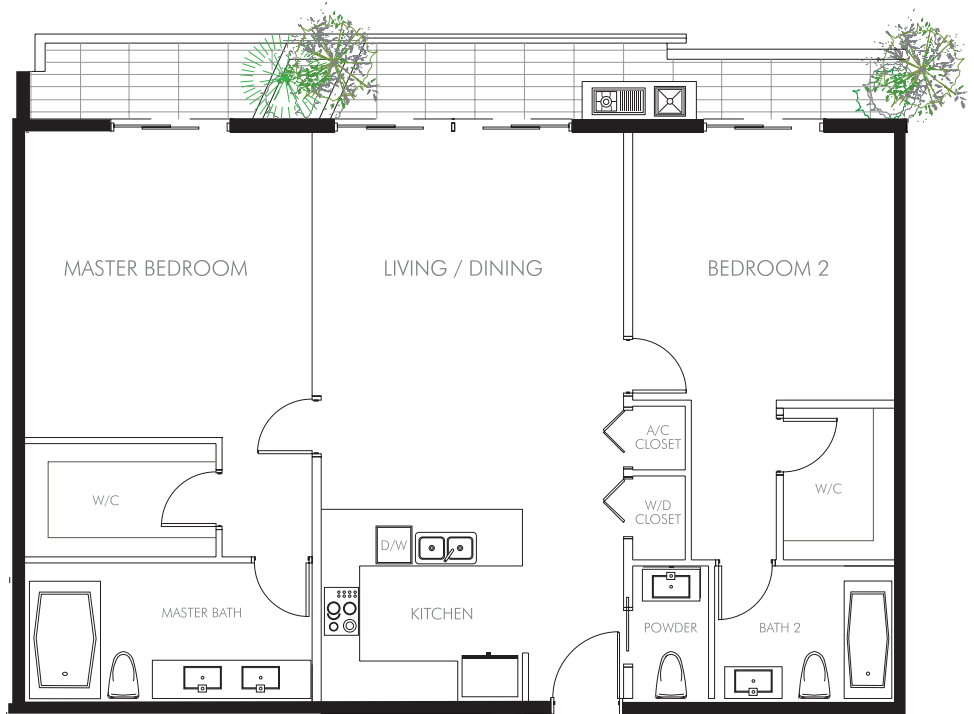
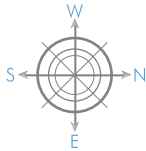
3 BEDROOMS | 3 BATHS

A/C	BALCONIES	TOTAL AREA
1,740 Sq.Ft.	376 Sq.Ft.	2,116 Sq.Ft.
161.65 Sq.Mt.	34.93 Sq.Mt.	196.58 Sq.Mt.

 Stated dimensions are measured to the exterior boundaries of the exterior walls and the centerline of interior demising walls and in fact vary from the dimensions that would be determined by using the description and definition of the "Unit" set forth in the Declaration (which generally only includes the interior airspace between the perimeter walls and excludes interior structural components). For your reference, the area of the Unit, determined in accordance with those defined unit boundaries. Note that measurements of rooms set forth on this floor plan are generally taken at the greatest points of each given room (as if the room were a perfect rectangle), without regard for any cutouts. Accordingly, the area of the actual room will typically be smaller than the product obtained by multiplying the stated length times width. All dimensions are approximate and may vary with actual construction, and all floor plans and development plans are subject to change. © 2014 PEARL HOUSE. All Rights Reserved.




PEARL HOUSE
BAY HARBOR ISLANDS



LEVEL 2 RESIDENCE 202

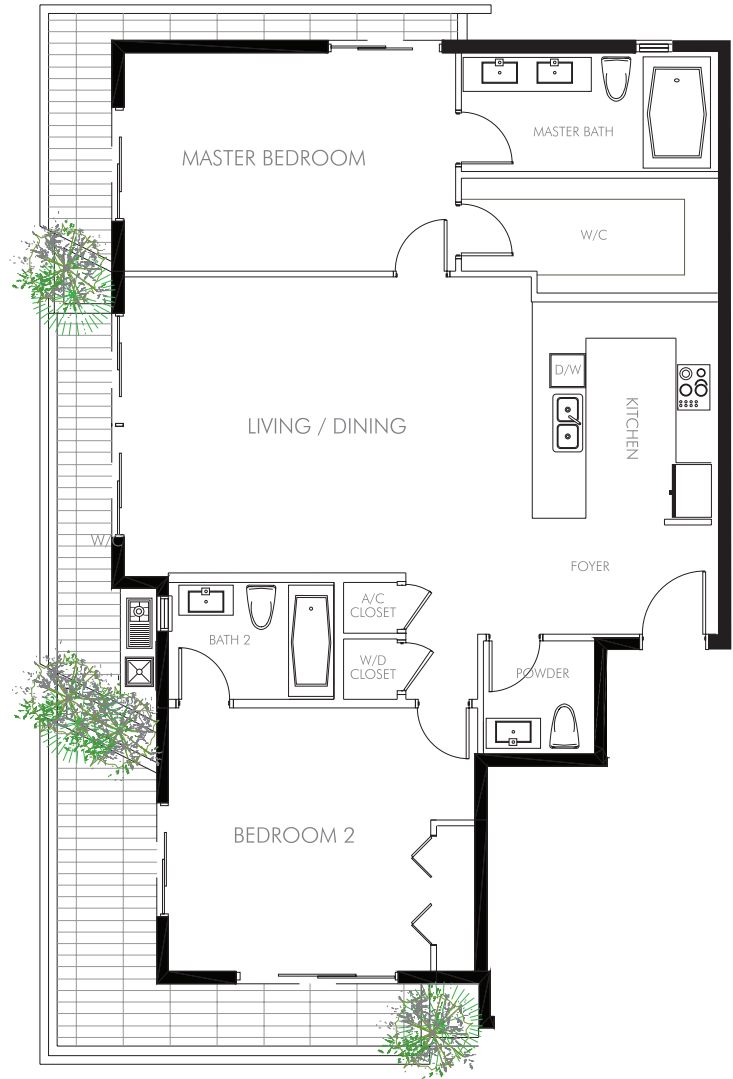
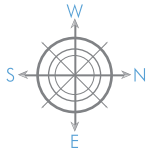
2 BEDROOMS | 2.5 BATHS

A/C	BALCONIES	TOTAL AREA
1,468 Sq.Ft.	155 Sq.Ft.	1,623 Sq.Ft.
136.38 Sq.Mt.	14.40 Sq.Mt.	150.78 Sq.Mt.

 Stated dimensions are measured to the exterior boundaries of the exterior walls and the centerline of interior demising walls and in fact vary from the dimensions that would be determined by using the description and definition of the "Unit" set forth in the Declaration (which generally only includes the interior airspace between the perimeter walls and excludes interior structural components). For your reference, the area of the Unit, determined in accordance with those defined unit boundaries. Note that measurements of rooms set forth on this floor plan are generally taken at the greatest points of each given room (as if the room were a perfect rectangle), without regard for any cutouts. Accordingly, the area of the actual room will typically be smaller than the product obtained by multiplying the stated length times width. All dimensions are approximate and may vary with actual construction, and all floor plans and development plans are subject to change. © 2014 PEARL HOUSE. All Rights Reserved.




PEARL HOUSE
BAY HARBOR ISLANDS



LEVEL 2 RESIDENCE 203

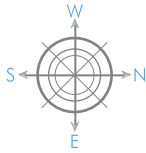
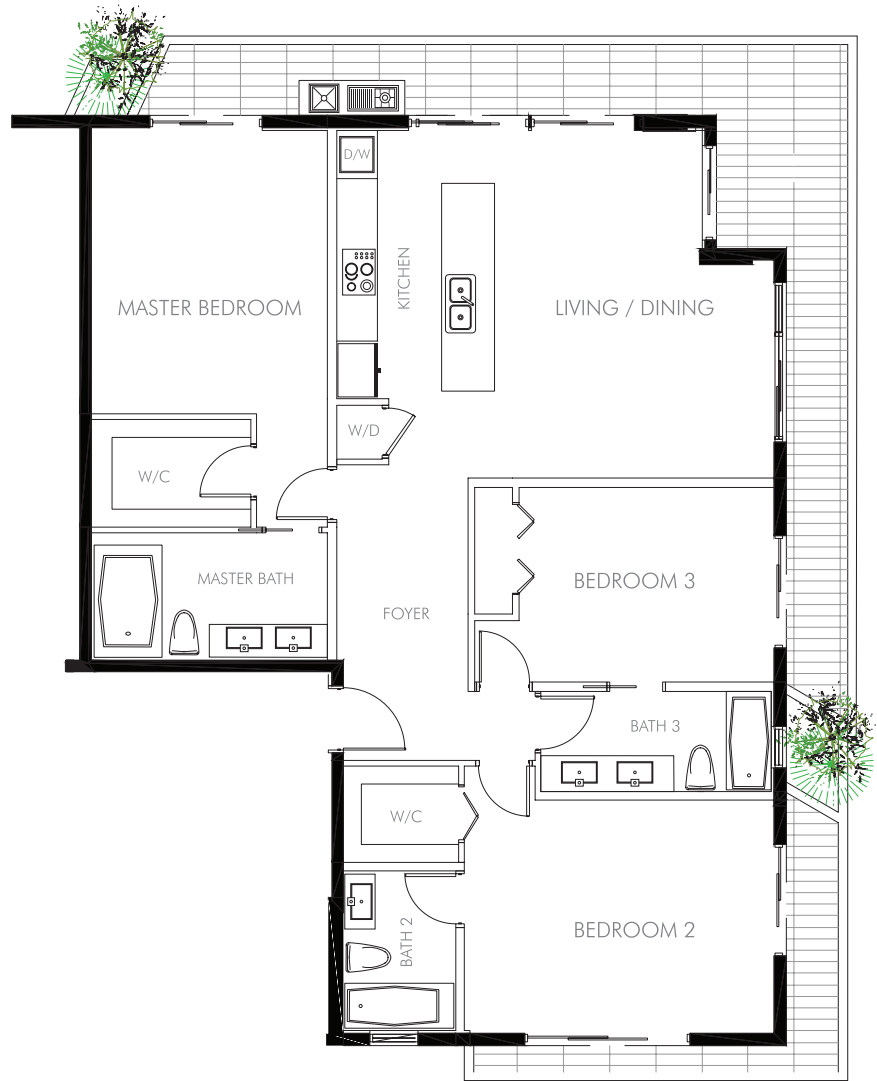
2 BEDROOMS | 2.5 BATHS

A/C	BALCONIES	TOTAL AREA
1,522 Sq.Ft.	298 Sq.Ft.	1,820 Sq.Ft.
141.40 Sq.Mt.	27.69 Sq.Mt.	169.08 Sq.Mt.

 Stated dimensions are measured to the exterior boundaries of the exterior walls and the centerline of interior demising walls and in fact vary from the dimensions that would be determined by using the description and definition of the "Unit" set forth in the Declaration (which generally only includes the interior airspace between the perimeter walls and excludes interior structural components). For your reference, the area of the Unit, determined in accordance with those defined unit boundaries. Note that measurements of rooms set forth on this floor plan are generally taken at the greatest points of each given room (as if the room were a perfect rectangle), without regard for any cutouts. Accordingly, the area of the actual room will typically be smaller than the product obtained by multiplying the stated length times width. All dimensions are approximate and may vary with actual construction, and all floor plans and development plans are subject to change. © 2014 PEARL HOUSE. All Rights Reserved.



PEARL HOUSE
BAY HARBOR ISLANDS



LEVEL 3 RESIDENCE 301

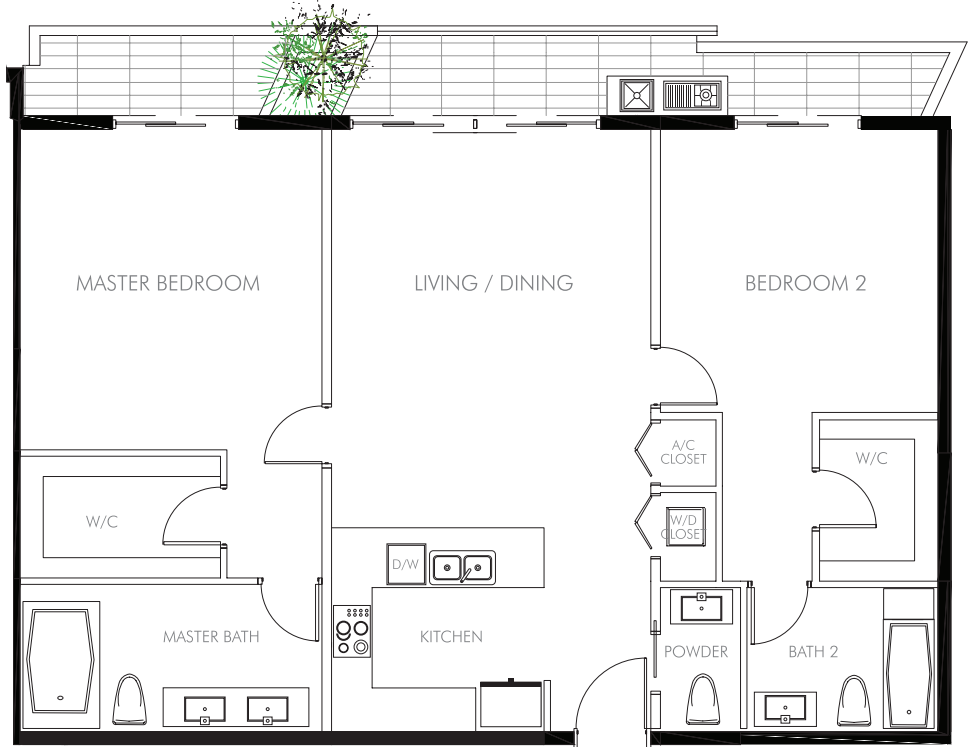
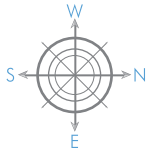
3 BEDROOMS | 3 BATHS

A/C	BALCONIES	TOTAL AREA
1,740 Sq.Ft.	376 Sq.Ft.	2,116 Sq.Ft.
161.65 Sq.Mt.	34.93 Sq.Mt.	196.58 Sq.Mt.

Stated dimensions are measured to the exterior boundaries of the exterior walls and the centerline of interior demising walls and in fact vary from the dimensions that would be determined by using the description and definition of the "Unit" set forth in the Declaration (which generally only includes the interior airspace between the perimeter walls and excludes interior structural components). For your reference, the area of the Unit, determined in accordance with those defined unit boundaries. Note that measurements of rooms set forth on this floor plan are generally taken at the greatest points of each given room (as if the room were a perfect rectangle), without regard for any cutouts. Accordingly, the area of the actual room will typically be smaller than the product obtained by multiplying the stated length times width. All dimensions are approximate and may vary with actual construction, and all floor plans and development plans are subject to change. © 2014 PEARL HOUSE. All Rights Reserved.




PEARL HOUSE
BAY HARBOR ISLANDS



LEVEL 3 RESIDENCE 302

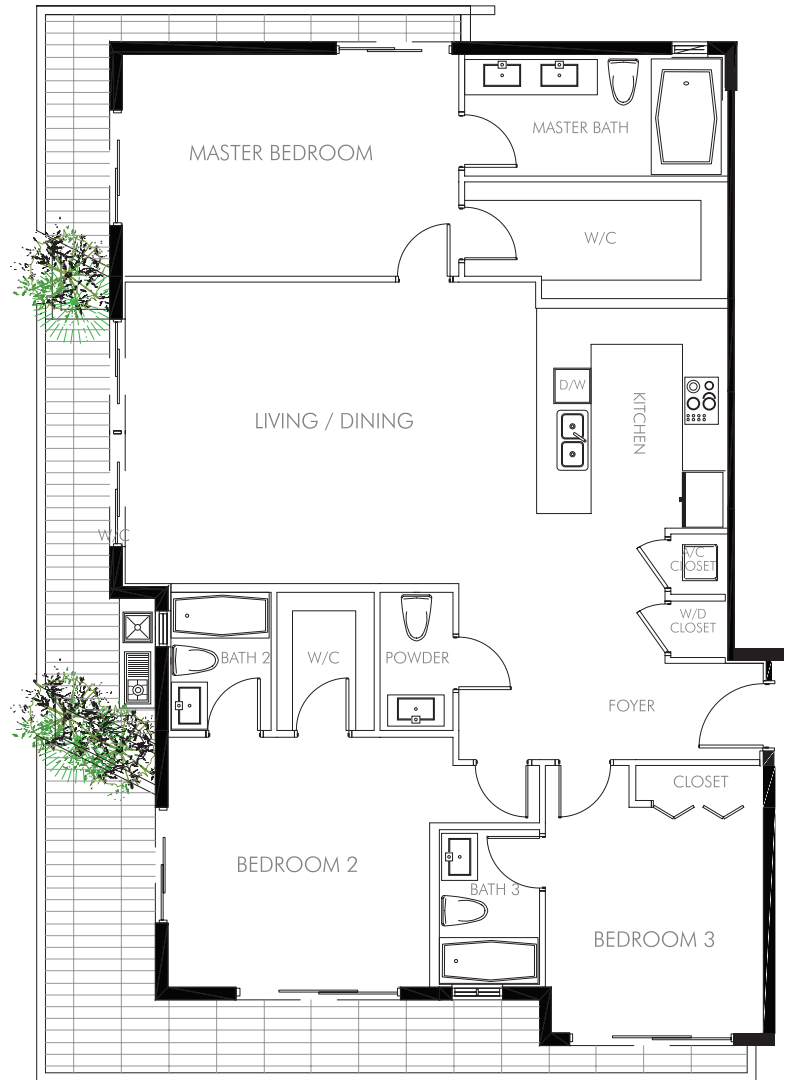
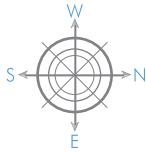
2 BEDROOMS | 2.5 BATHS

A/C	BALCONIES	TOTAL AREA
1,468 Sq.Ft.	155 Sq.Ft.	1,623 Sq.Ft.
136.38 Sq.Mt.	14.40 Sq.Mt.	150.78 Sq.Mt.

 Stated dimensions are measured to the exterior boundaries of the exterior walls and the centerline of interior demising walls and in fact vary from the dimensions that would be determined by using the description and definition of the "Unit" set forth in the Declaration (which generally only includes the interior airspace between the perimeter walls and excludes interior structural components). For your reference, the area of the Unit, determined in accordance with those defined unit boundaries. Note that measurements of rooms set forth on this floor plan are generally taken at the greatest points of each given room (as if the room were a perfect rectangle), without regard for any cutouts. Accordingly, the area of the actual room will typically be smaller than the product obtained by multiplying the stated length times width. All dimensions are approximate and may vary with actual construction, and all floor plans and development plans are subject to change. © 2014 PEARL HOUSE. All Rights Reserved.




PEARL HOUSE
BAY HARBOR ISLANDS



LEVEL 3 RESIDENCE 303

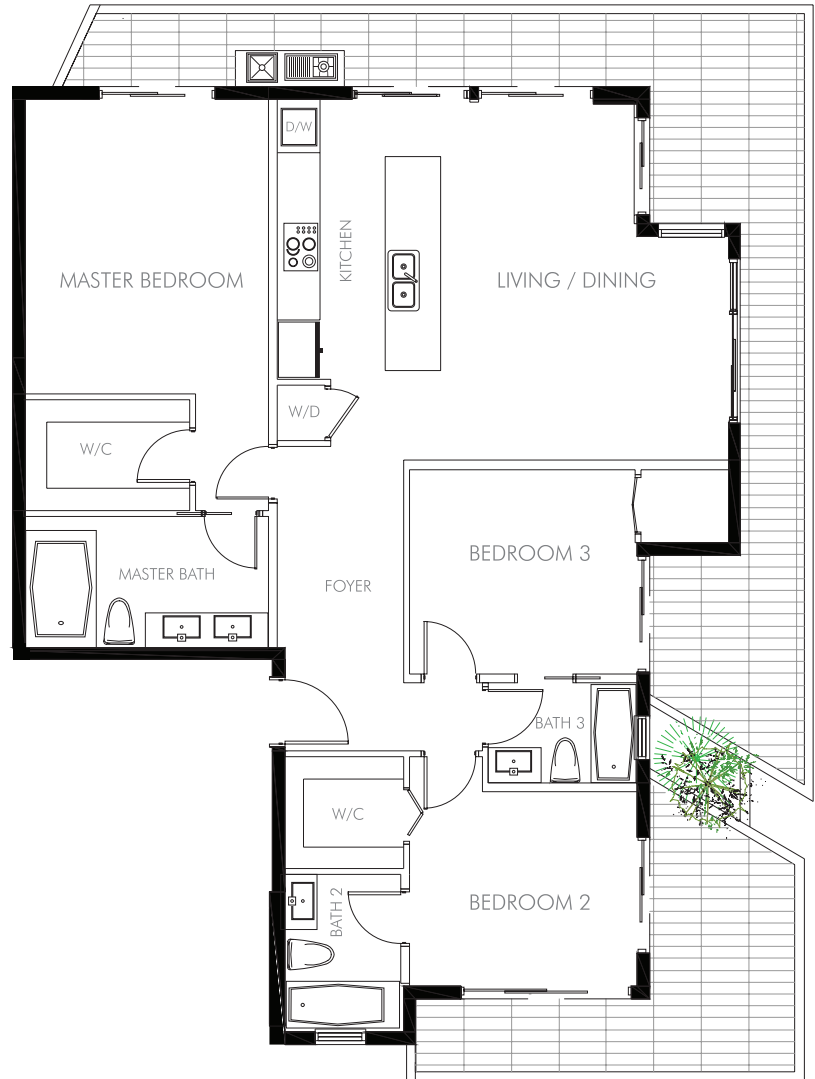
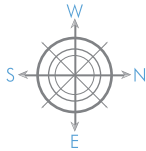
3 BEDROOMS | 3.5 BATHS

A/C	BALCONIES	TOTAL AREA
1,809 Sq.Ft.	298 Sq.Ft.	2,107 Sq.Ft.
168.06 Sq.Mt.	27.69 Sq.Mt.	195.75 Sq.Mt.

 Stated dimensions are measured to the exterior boundaries of the exterior walls and the centerline of interior demising walls and in fact vary from the dimensions that would be determined by using the description and definition of the "Unit" set forth in the Declaration (which generally only includes the interior airspace between the perimeter walls and excludes interior structural components). For your reference, the area of the Unit, determined in accordance with those defined unit boundaries. Note that measurements of rooms set forth on this floor plan are generally taken at the greatest points of each given room (as if the room were a perfect rectangle), without regard for any cutouts. Accordingly, the area of the actual room will typically be smaller than the product obtained by multiplying the stated length times width. All dimensions are approximate and may vary with actual construction, and all floor plans and development plans are subject to change. © 2014 PEARL HOUSE. All Rights Reserved.




PEARL HOUSE
BAY HARBOR ISLANDS



LEVEL 4 RESIDENCE 401

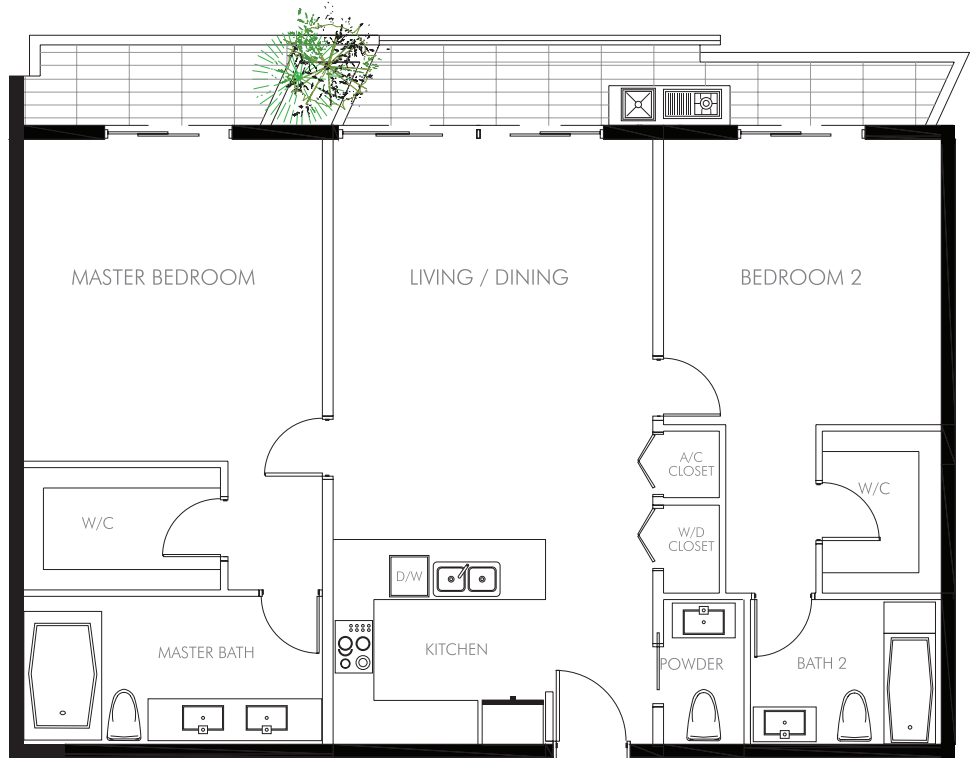
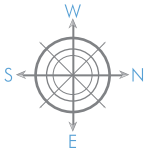
3 BEDROOMS | 3 BATHS

A/C	BALCONIES	TOTAL AREA
1,578 Sq.Ft.	533 Sq.Ft.	2,111 Sq.Ft.
146.60 Sq.Mt.	49.52 Sq.Mt.	196.12 Sq.Mt.

 Stated dimensions are measured to the exterior boundaries of the exterior walls and the centerline of interior demising walls and in fact vary from the dimensions that would be determined by using the description and definition of the "Unit" set forth in the Declaration (which generally only includes the interior airspace between the perimeter walls and excludes interior structural components). For your reference, the area of the Unit, determined in accordance with those defined unit boundaries. Note that measurements of rooms set forth on this floor plan are generally taken at the greatest points of each given room (as if the room were a perfect rectangle), without regard for any cutouts. Accordingly, the area of the actual room will typically be smaller than the product obtained by multiplying the stated length times width. All dimensions are approximate and may vary with actual construction, and all floor plans and development plans are subject to change. © 2014 PEARL HOUSE. All Rights Reserved.




PEARL HOUSE
BAY HARBOR ISLANDS



LEVEL 4 RESIDENCE 402

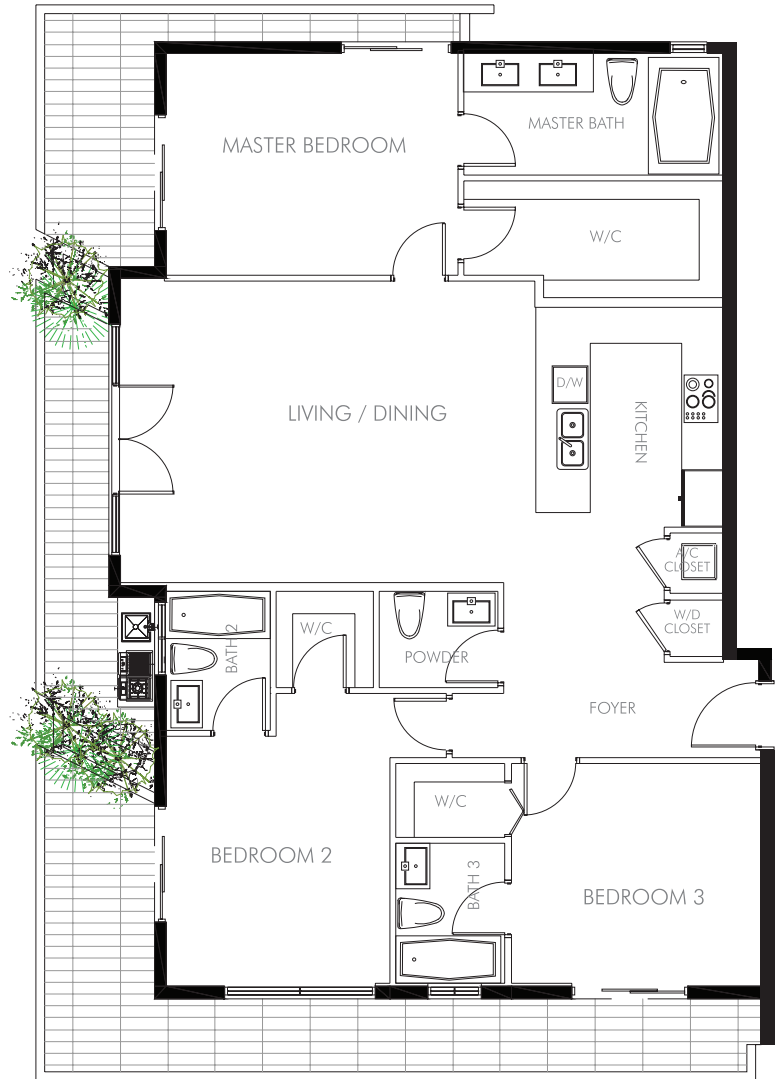
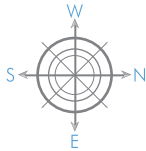
2 BEDROOMS | 2.5 BATHS

A/C	BALCONIES	TOTAL AREA
1,455 Sq.Ft.	155 Sq.Ft.	1,610 Sq.Ft.
135.17 Sq.Mt.	14.40 Sq.Mt.	149.57 Sq.Mt.

 Stated dimensions are measured to the exterior boundaries of the exterior walls and the centerline of interior demising walls and in fact vary from the dimensions that would be determined by using the description and definition of the "Unit" set forth in the Declaration (which generally only includes the interior airspace between the perimeter walls and excludes interior structural components). For your reference, the area of the Unit, determined in accordance with those defined unit boundaries. Note that measurements of rooms set forth on this floor plan are generally taken at the greatest points of each given room (as if the room were a perfect rectangle), without regard for any cutouts. Accordingly, the area of the actual room will typically be smaller than the product obtained by multiplying the stated length times width. All dimensions are approximate and may vary with actual construction, and all floor plans and development plans are subject to change. © 2014 PEARL HOUSE. All Rights Reserved.




PEARL HOUSE
BAY HARBOR ISLANDS



LEVEL 4 RESIDENCE 403

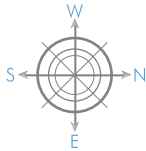
3 BEDROOMS | 3.5 BATHS

A/C	BALCONIES	TOTAL AREA
1,745 Sq.Ft.	430 Sq.Ft.	2,175 Sq.Ft.
162.12 Sq.Mt.	39.95 Sq.Mt.	202.06 Sq.Mt.

 Stated dimensions are measured to the exterior boundaries of the exterior walls and the centerline of interior demising walls and in fact vary from the dimensions that would be determined by using the description and definition of the "Unit" set forth in the Declaration (which generally only includes the interior airspace between the perimeter walls and excludes interior structural components). For your reference, the area of the Unit, determined in accordance with those defined unit boundaries. Note that measurements of rooms set forth on this floor plan are generally taken at the greatest points of each given room (as if the room were a perfect rectangle), without regard for any cutouts. Accordingly, the area of the actual room will typically be smaller than the product obtained by multiplying the stated length times width. All dimensions are approximate and may vary with actual construction, and all floor plans and development plans are subject to change. © 2014 PEARL HOUSE. All Rights Reserved.




PEARL HOUSE
BAY HARBOR ISLANDS



LEVEL 5 RESIDENCE 501

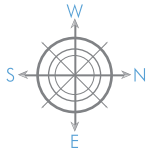
3 BEDROOMS | 3.5 BATHS

A/C	BALCONIES	TOTAL AREA
1,829 Sq.Ft.	800 Sq.Ft.	2,629 Sq.Ft.
169.92 Sq.Mt.	74.32 Sq.Mt.	244.24 Sq.Mt.

 Stated dimensions are measured to the exterior boundaries of the exterior walls and the centerline of interior demising walls and in fact vary from the dimensions that would be determined by using the description and definition of the "Unit" set forth in the Declaration (which generally only includes the interior airspace between the perimeter walls and excludes interior structural components). For your reference, the area of the Unit, determined in accordance with those defined unit boundaries. Note that measurements of rooms set forth on this floor plan are generally taken at the greatest points of each given room (as if the room were a perfect rectangle), without regard for any cutouts. Accordingly, the area of the actual room will typically be smaller than the product obtained by multiplying the stated length times width. All dimensions are approximate and may vary with actual construction, and all floor plans and development plans are subject to change. © 2014 PEARL HOUSE. All Rights Reserved.




PEARL HOUSE
BAY HARBOR ISLANDS



LEVEL 5 RESIDENCE 502

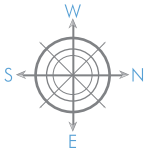
3 BEDROOMS | 3.5 BATHS | DEN

A/C	BALCONIES	TOTAL AREA
1,855 Sq.Ft.	762 Sq.Ft.	2,617 Sq.Ft.
172.34 Sq.Mt.	70.79 Sq.Mt.	243.13 Sq.Mt.

 Stated dimensions are measured to the exterior boundaries of the exterior walls and the centerline of interior demising walls and in fact vary from the dimensions that would be determined by using the description and definition of the "Unit" set forth in the Declaration (which generally only includes the interior airspace between the perimeter walls and excludes interior structural components). For your reference, the area of the Unit, determined in accordance with those defined unit boundaries. Note that measurements of rooms set forth on this floor plan are generally taken at the greatest points of each given room (as if the room were a perfect rectangle), without regard for any cutouts. Accordingly, the area of the actual room will typically be smaller than the product obtained by multiplying the stated length times width. All dimensions are approximate and may vary with actual construction, and all floor plans and development plans are subject to change. © 2014 PEARL HOUSE. All Rights Reserved.




PEARL HOUSE
BAY HARBOR ISLANDS



LEVEL 6 RESIDENCE 601

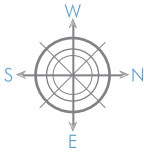
3 BEDROOMS | 3.5 BATHS

A/C	BALCONIES	TOTAL AREA
1,829 Sq.Ft.	537 Sq.Ft.	2,366 Sq.Ft.
169.92 Sq.Mt.	49.89 Sq.Mt.	219.81 Sq.Mt.

 Stated dimensions are measured to the exterior boundaries of the exterior walls and the centerline of interior demising walls and in fact vary from the dimensions that would be determined by using the description and definition of the "Unit" set forth in the Declaration (which generally only includes the interior airspace between the perimeter walls and excludes interior structural components). For your reference, the area of the Unit, determined in accordance with those defined unit boundaries. Note that measurements of rooms set forth on this floor plan are generally taken at the greatest points of each given room (as if the room were a perfect rectangle), without regard for any cutouts. Accordingly, the area of the actual room will typically be smaller than the product obtained by multiplying the stated length times width. All dimensions are approximate and may vary with actual construction, and all floor plans and development plans are subject to change. © 2014 PEARL HOUSE. All Rights Reserved.




PEARL HOUSE
BAY HARBOR ISLANDS



LEVEL 6 RESIDENCE 602

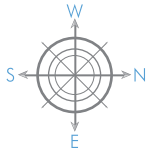
3 BEDROOMS | 3.5 BATHS | DEN

A/C	BALCONIES	TOTAL AREA
1,855 Sq.Ft.	567 Sq.Ft.	2,422 Sq.Ft.
172.34 Sq.Mt.	52.68 Sq.Mt.	225.01 Sq.Mt.

 Stated dimensions are measured to the exterior boundaries of the exterior walls and the centerline of interior demising walls and in fact vary from the dimensions that would be determined by using the description and definition of the "Unit" set forth in the Declaration (which generally only includes the interior airspace between the perimeter walls and excludes interior structural components). For your reference, the area of the Unit, determined in accordance with those defined unit boundaries. Note that measurements of rooms set forth on this floor plan are generally taken at the greatest points of each given room (as if the room were a perfect rectangle), without regard for any cutouts. Accordingly, the area of the actual room will typically be smaller than the product obtained by multiplying the stated length times width. All dimensions are approximate and may vary with actual construction, and all floor plans and development plans are subject to change. © 2014 PEARL HOUSE. All Rights Reserved.




PEARL HOUSE
BAY HARBOR ISLANDS



LEVEL 7 RESIDENCE PH1

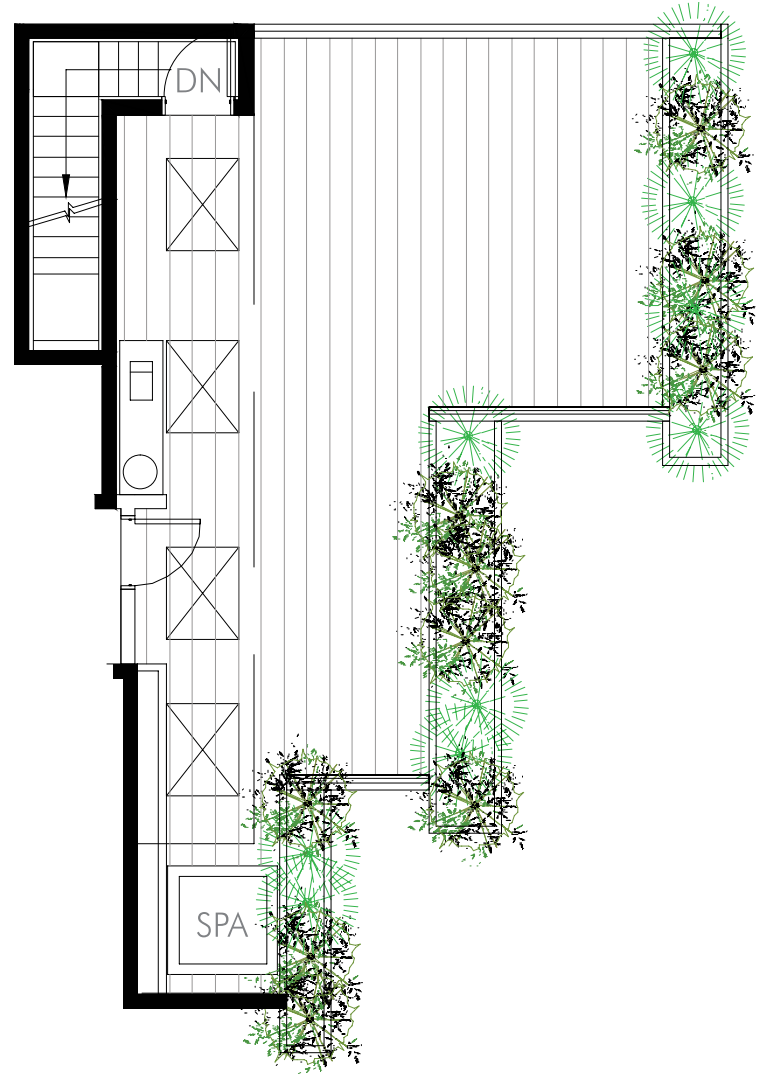
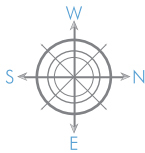
4 BEDROOMS | 4 BATHS

A/C	BALCONIES	TOTAL AREA
2,259 Sq.Ft.	536 Sq.Ft.	2,795 Sq.Ft.
209.87 Sq.Mt.	49.80 Sq.Mt.	259.66 Sq.Mt.

 Stated dimensions are measured to the exterior boundaries of the exterior walls and the centerline of interior demising walls and in fact vary from the dimensions that would be determined by using the description and definition of the "Unit" set forth in the Declaration (which generally only includes the interior airspace between the perimeter walls and excludes interior structural components). For your reference, the area of the Unit, determined in accordance with those defined unit boundaries. Note that measurements of rooms set forth on this floor plan are generally taken at the greatest points of each given room (as if the room were a perfect rectangle), without regard for any cutouts. Accordingly, the area of the actual room will typically be smaller than the product obtained by multiplying the stated length times width. All dimensions are approximate and may vary with actual construction, and all floor plans and development plans are subject to change. © 2014 PEARL HOUSE. All Rights Reserved.



PEARL HOUSE
BAY HARBOR ISLANDS



LEVEL 8 PRIVATE TERRACE PH1

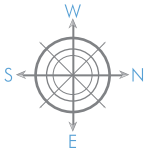
PRIVATE TERRACE 707 Sq. Ft. | 65.68 Sq. Mt.



Stated dimensions are measured to the exterior boundaries of the exterior walls and the centerline of interior demising walls and in fact vary from the dimensions that would be determined by using the description and definition of the "Unit" set forth in the Declaration (which generally only includes the interior airspace between the perimeter walls and excludes interior structural components). For your reference, the area of the Unit, determined in accordance with those defined unit boundaries. Note that measurements of rooms set forth on this floor plan are generally taken at the greatest points of each given room (as if the room were a perfect rectangle), without regard for any cutouts. Accordingly, the area of the actual room will typically be smaller than the product obtained by multiplying the stated length times width. All dimensions are approximate and may vary with actual construction, and all floor plans and development plans are subject to change. © 2014 PEARL HOUSE. All Rights Reserved.




PEARL HOUSE
BAY HARBOR ISLANDS



LEVEL 7 RESIDENCE PH2

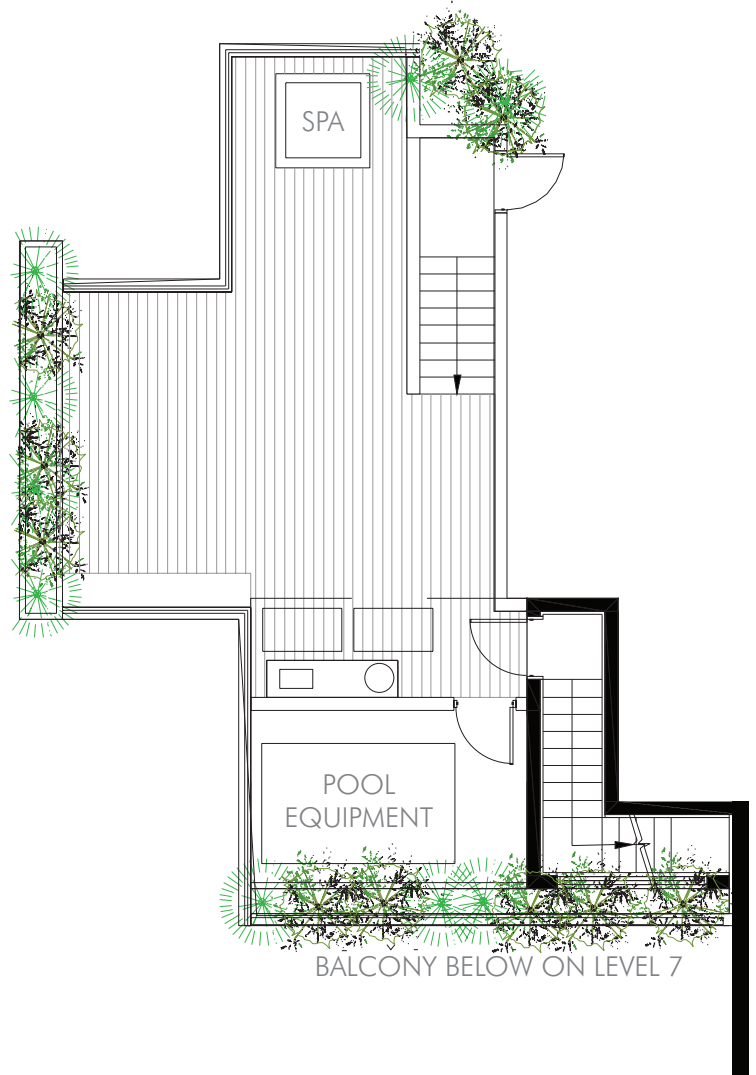
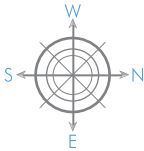
2 BEDROOMS | 2.5 BATHS | DEN

A/C	BALCONIES	TOTAL AREA
1,440 Sq.Ft.	474 Sq.Ft.	1,914 Sq.Ft.
133.78 Sq.Mt.	44.04 Sq.Mt.	177.82 Sq.Mt.

 Stated dimensions are measured to the exterior boundaries of the exterior walls and the centerline of interior demising walls and in fact vary from the dimensions that would be determined by using the description and definition of the "Unit" set forth in the Declaration (which generally only includes the interior airspace between the perimeter walls and excludes interior structural components). For your reference, the area of the Unit, determined in accordance with those defined unit boundaries. Note that measurements of rooms set forth on this floor plan are generally taken at the greatest points of each given room (as if the room were a perfect rectangle), without regard for any cutouts. Accordingly, the area of the actual room will typically be smaller than the product obtained by multiplying the stated length times width. All dimensions are approximate and may vary with actual construction, and all floor plans and development plans are subject to change. © 2014 PEARL HOUSE. All Rights Reserved.




PEARL HOUSE
BAY HARBOR ISLANDS



LEVEL 8 PRIVATE TERRACE PH2

PRIVATE TERRACE 669 Sq. Ft. | 62.15 Sq. Mt.

 Stated dimensions are measured to the exterior boundaries of the exterior walls and the centerline of interior demising walls and in fact vary from the dimensions that would be determined by using the description and definition of the "Unit" set forth in the Declaration (which generally only includes the interior airspace between the perimeter walls and excludes interior structural components). For your reference, the area of the Unit, determined in accordance with those defined unit boundaries. Note that measurements of rooms set forth on this floor plan are generally taken at the greatest points of each given room (as if the room were a perfect rectangle), without regard for any cutouts. Accordingly, the area of the actual room will typically be smaller than the product obtained by multiplying the stated length times width. All dimensions are approximate and may vary with actual construction, and all floor plans and development plans are subject to change. © 2014 PEARL HOUSE. All Rights Reserved.