

iconbrickell

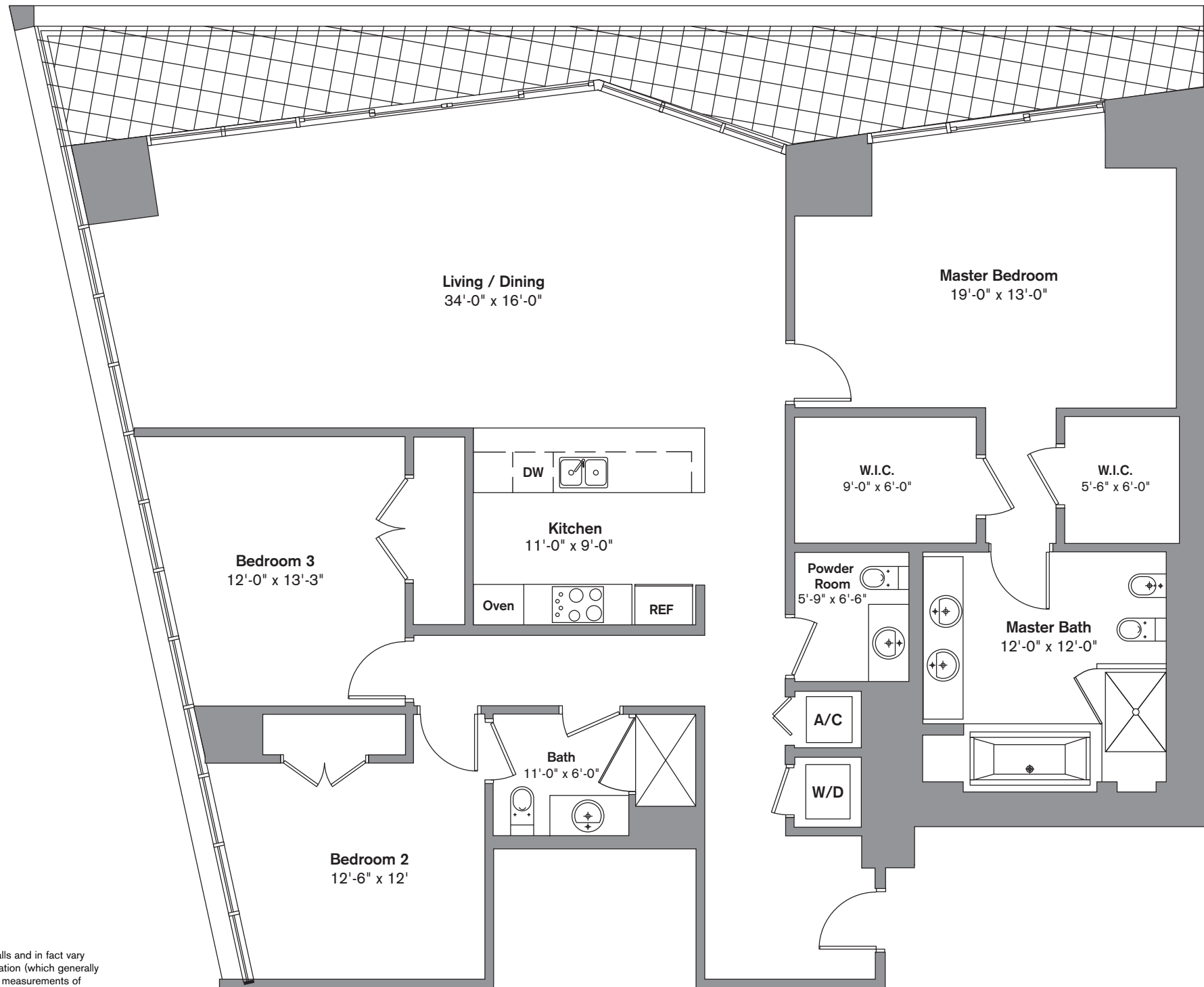
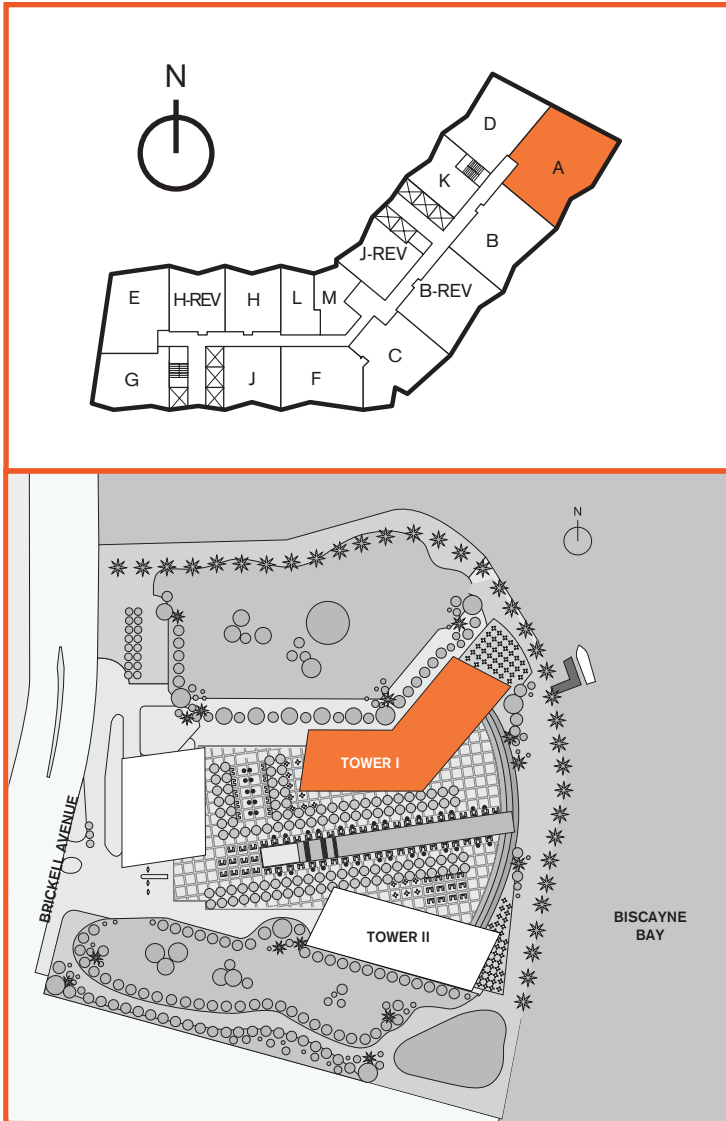
Inspired by Yoo by Philippe Starck

**Tower I / Tower II
Floorplans**

Site Plan



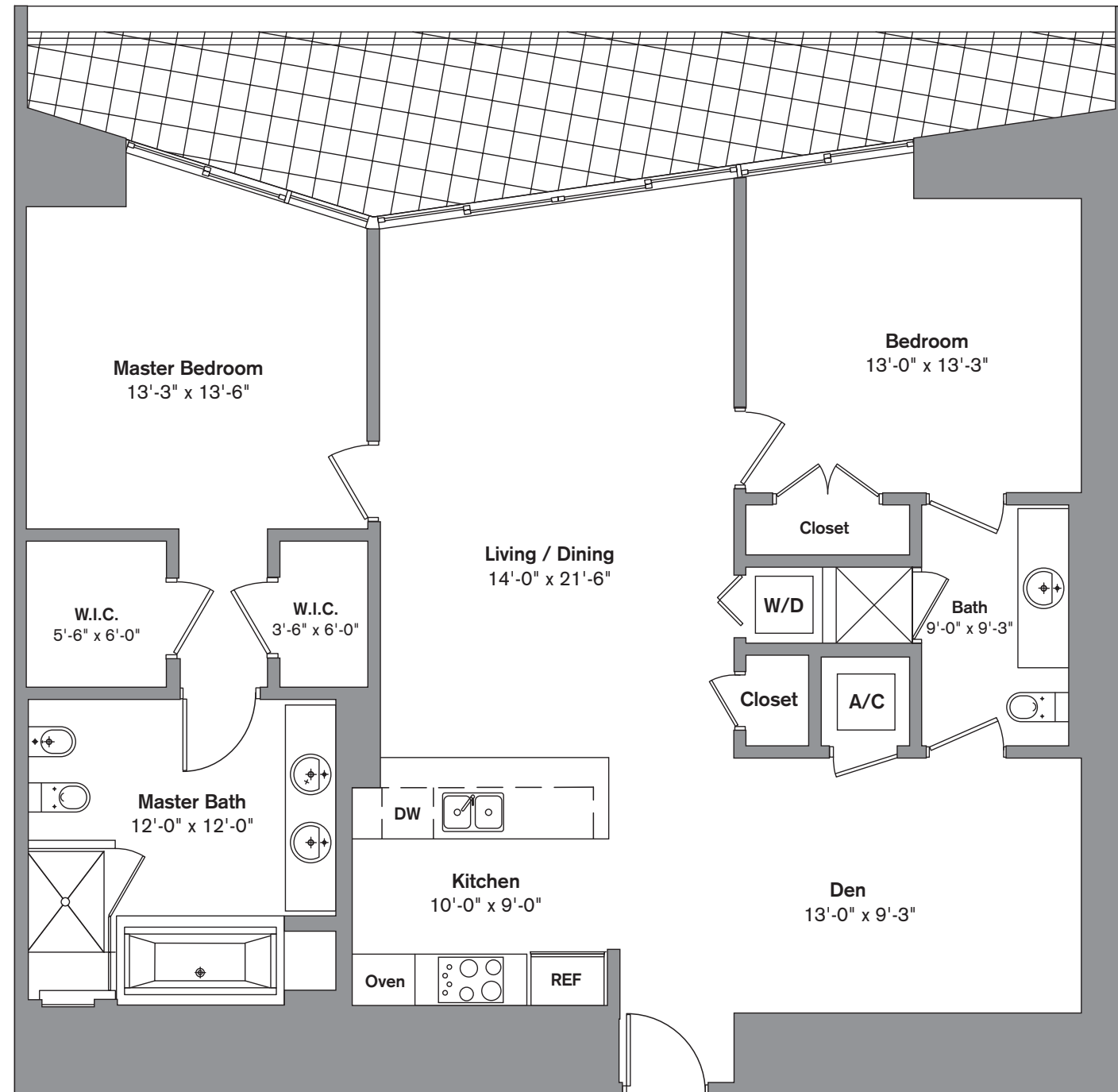
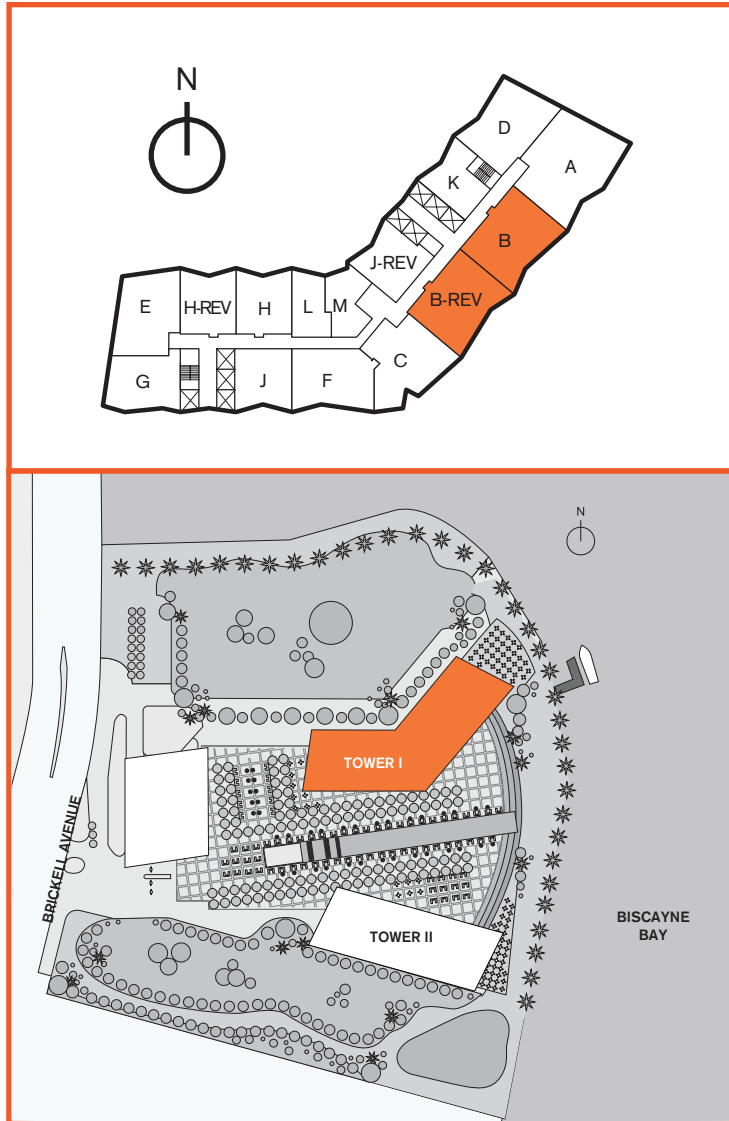
3 Bedroom / 2.5 Bath
Area under AC: 2,044 SF/189.89 m²
Balcony: 250 SF/23.22 m²
Total: 2,294 SF/ 213.11 m²



Stated dimensions are measured to the exterior boundaries of the exterior walls and the centerline of interior demising walls and in fact vary from the dimensions that would be determined by using the description and definition of the "Unit" set forth in the Declaration (which generally only includes the interior airspace between the perimeter walls and excludes interior structural components). Additionally, measurements of rooms set forth on any floor plan are generally taken at the greatest points of each given room (as if the room were a perfect rectangle), without regard for any cutouts. Accordingly, the area of the actual room will typically be smaller than the product obtained by multiplying the stated length times width. All dimensions are approximate and all floor plans and development plans are subject to change.



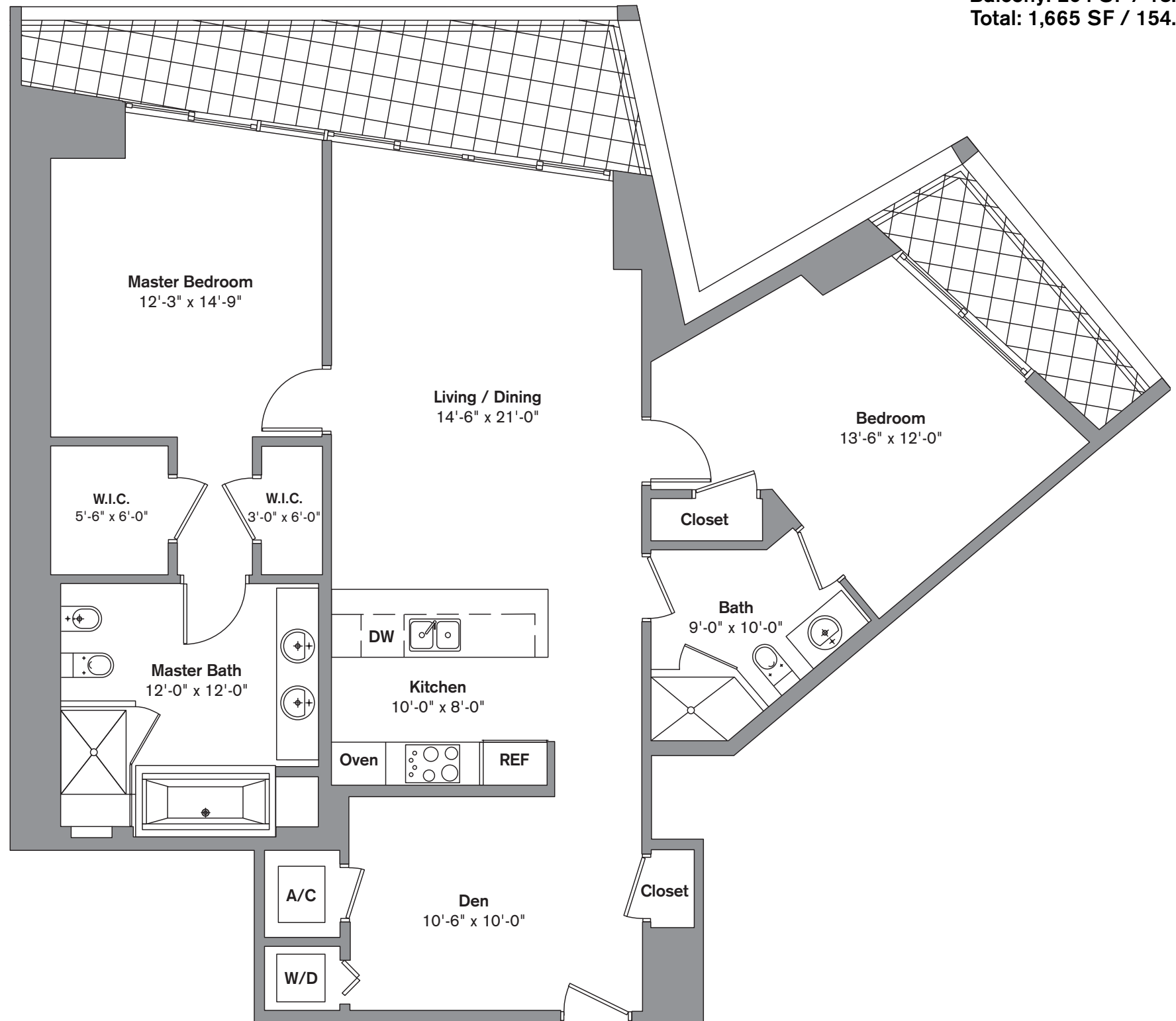
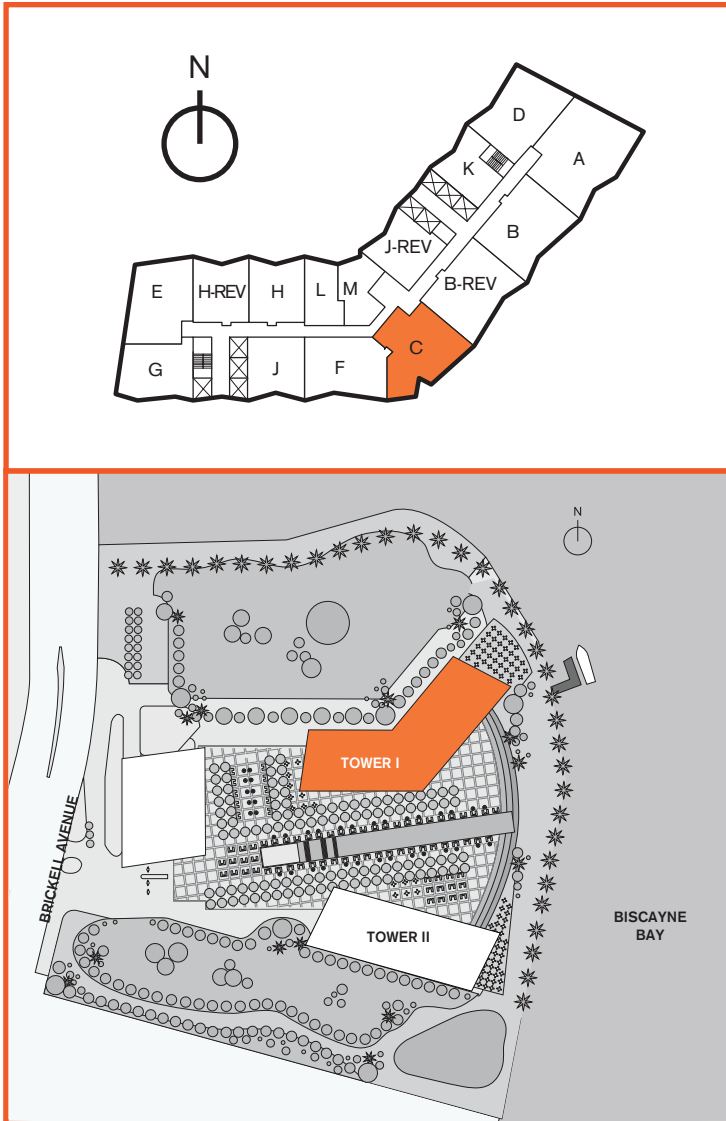
2 Bedroom / 2 Bath / Den
 Area under AC: 1,503 SF / 139.63 m²
 Balcony: 218 SF / 20.25 m²
 Total: 1,721 SF / 159.88 m²



Stated dimensions are measured to the exterior boundaries of the exterior walls and the centerline of interior demising walls and in fact vary from the dimensions that would be determined by using the description and definition of the "Unit" set forth in the Declaration (which generally only includes the interior airspace between the perimeter walls and excludes interior structural components). Additionally, measurements of rooms set forth on any floor plan are generally taken at the greatest points of each given room (as if the room were a perfect rectangle), without regard for any cutouts. Accordingly, the area of the actual room will typically be smaller than the product obtained by multiplying the stated length times width. All dimensions are approximate and all floor plans and development plans are subject to change.



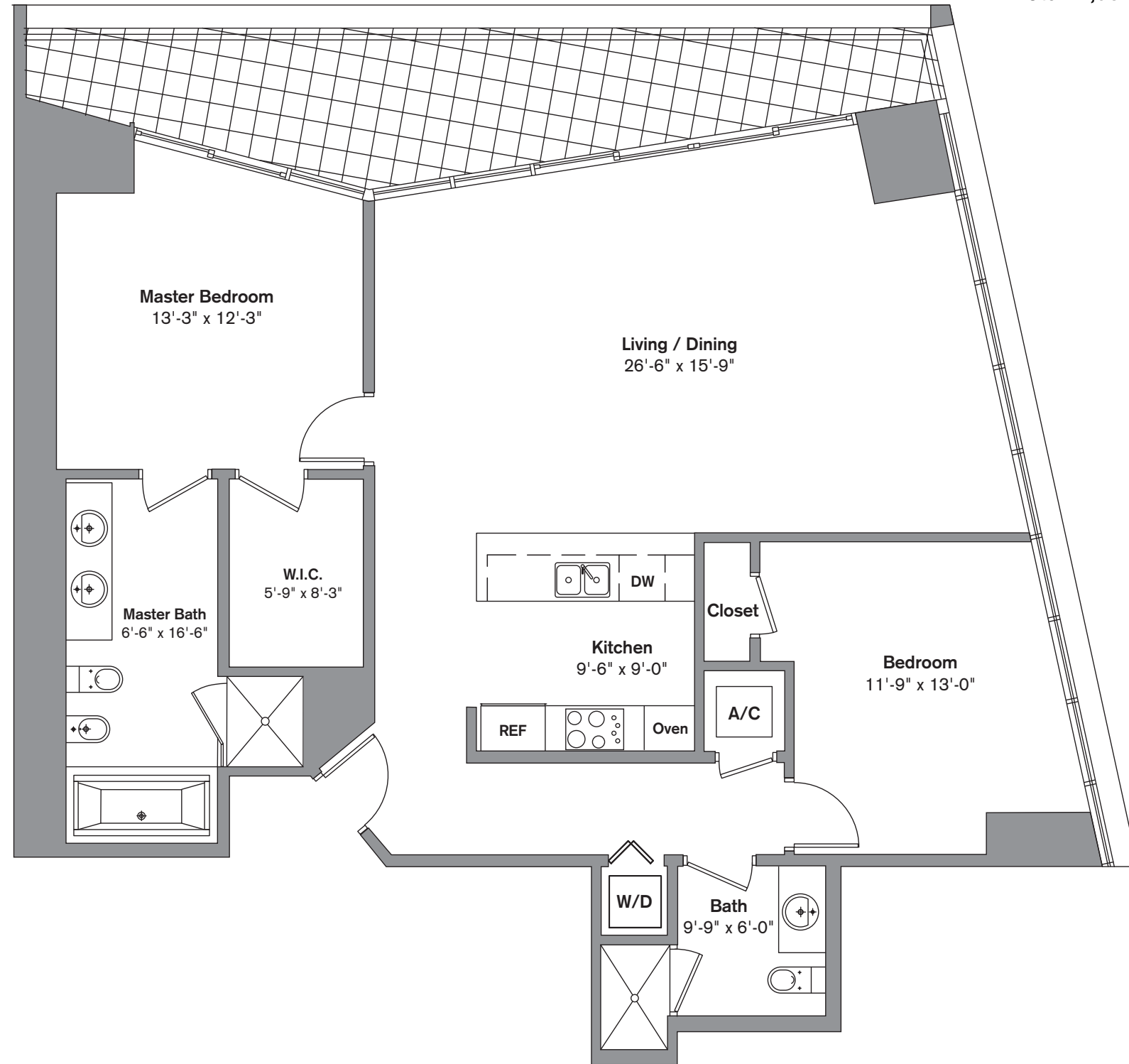
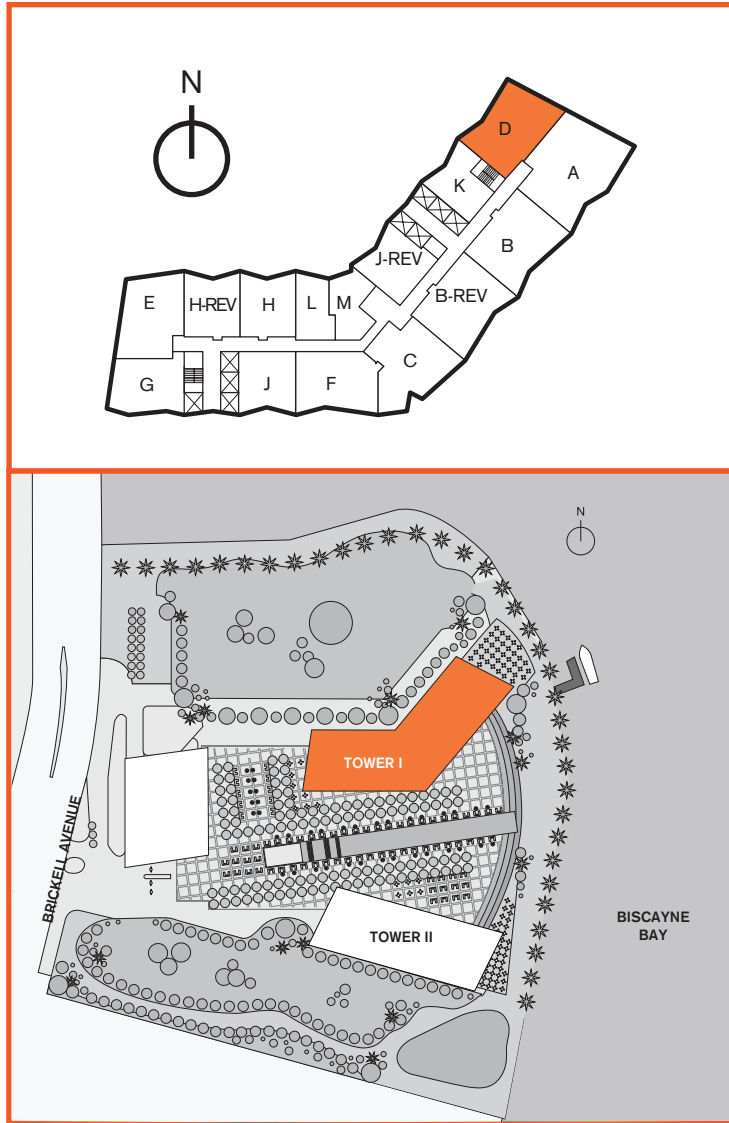
2 Bedroom / 2 Bath / Den
Area under AC: 1,461 SF / 135.73 m²
Balcony: 204 SF / 18.95 m²
Total: 1,665 SF / 154.68 m²



Stated dimensions are measured to the exterior boundaries of the exterior walls and the centerline of interior demising walls and in fact vary from the dimensions that would be determined by using the description and definition of the "Unit" set forth in the Declaration (which generally only includes the interior airspace between the perimeter walls and excludes interior structural components). Additionally, measurements of rooms set forth on any floor plan are generally taken at the greatest points of each given room (as if the room were a perfect rectangle), without regard for any cutouts. Accordingly, the area of the actual room will typically be smaller than the product obtained by multiplying the stated length times width. All dimensions are approximate and all floor plans and development plans are subject to change.



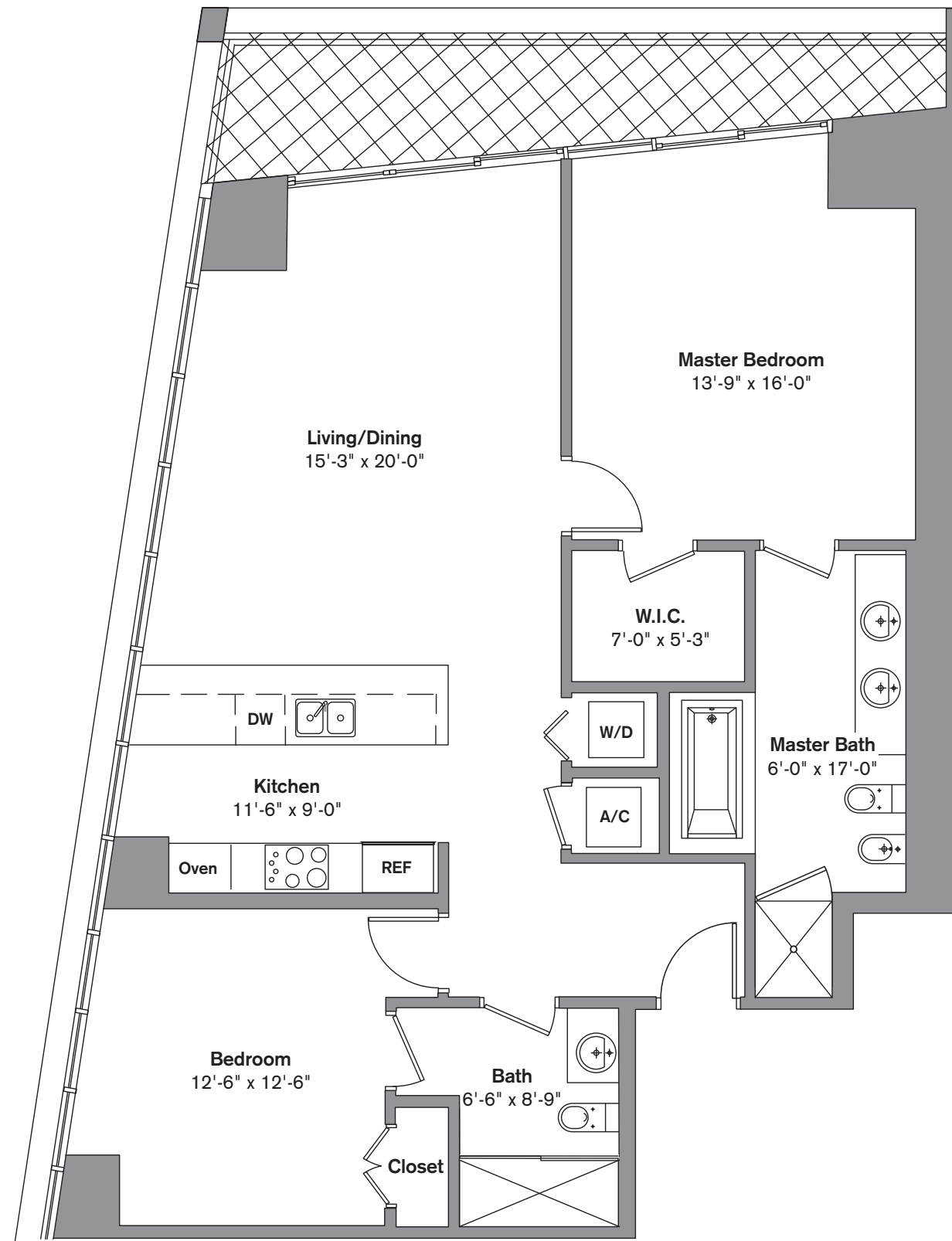
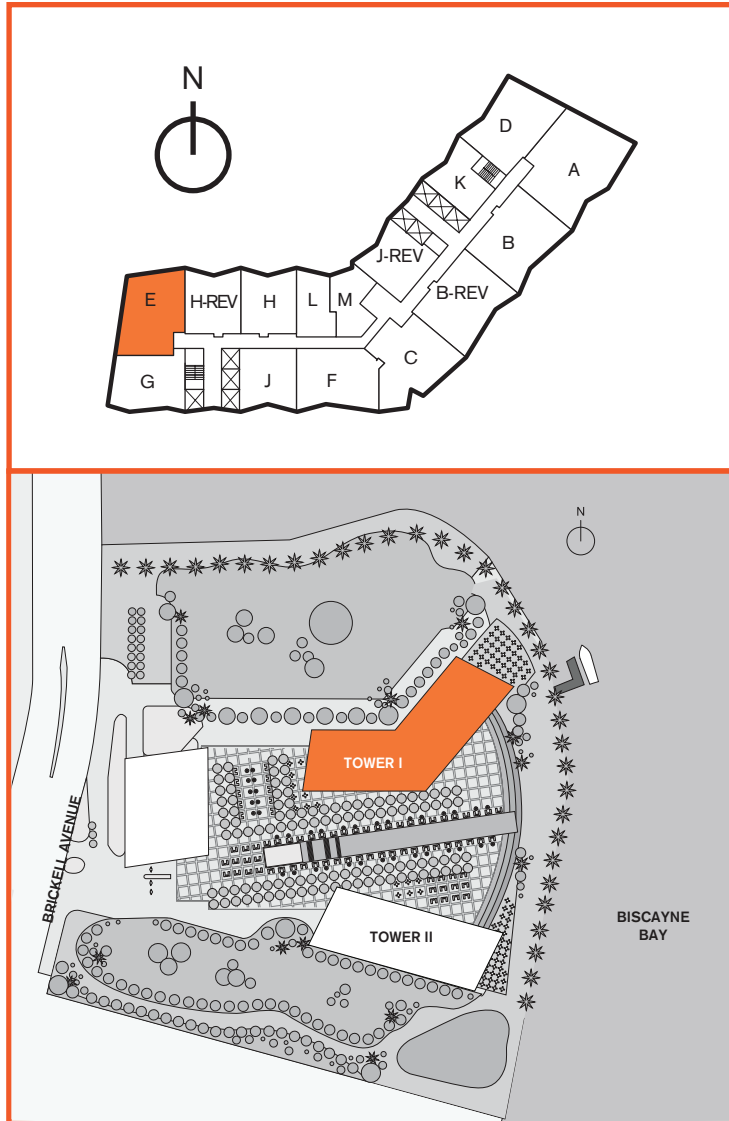
2 Bedroom / 2 Bath
Area under AC: 1,433 SF / 133.13 m²
Balcony: 201 SF / 18.67 m²
Total: 1,634 SF / 151.80 m²



Stated dimensions are measured to the exterior boundaries of the exterior walls and the centerline of interior demising walls and in fact vary from the dimensions that would be determined by using the description and definition of the "Unit" set forth in the Declaration (which generally only includes the interior airspace between the perimeter walls and excludes interior structural components). Additionally, measurements of rooms set forth on any floor plan are generally taken at the greatest points of each given room (as if the room were a perfect rectangle), without regard for any cutouts. Accordingly, the area of the actual room will typically be smaller than the product obtained by multiplying the stated length times width. All dimensions are approximate and all floor plans and development plans are subject to change.



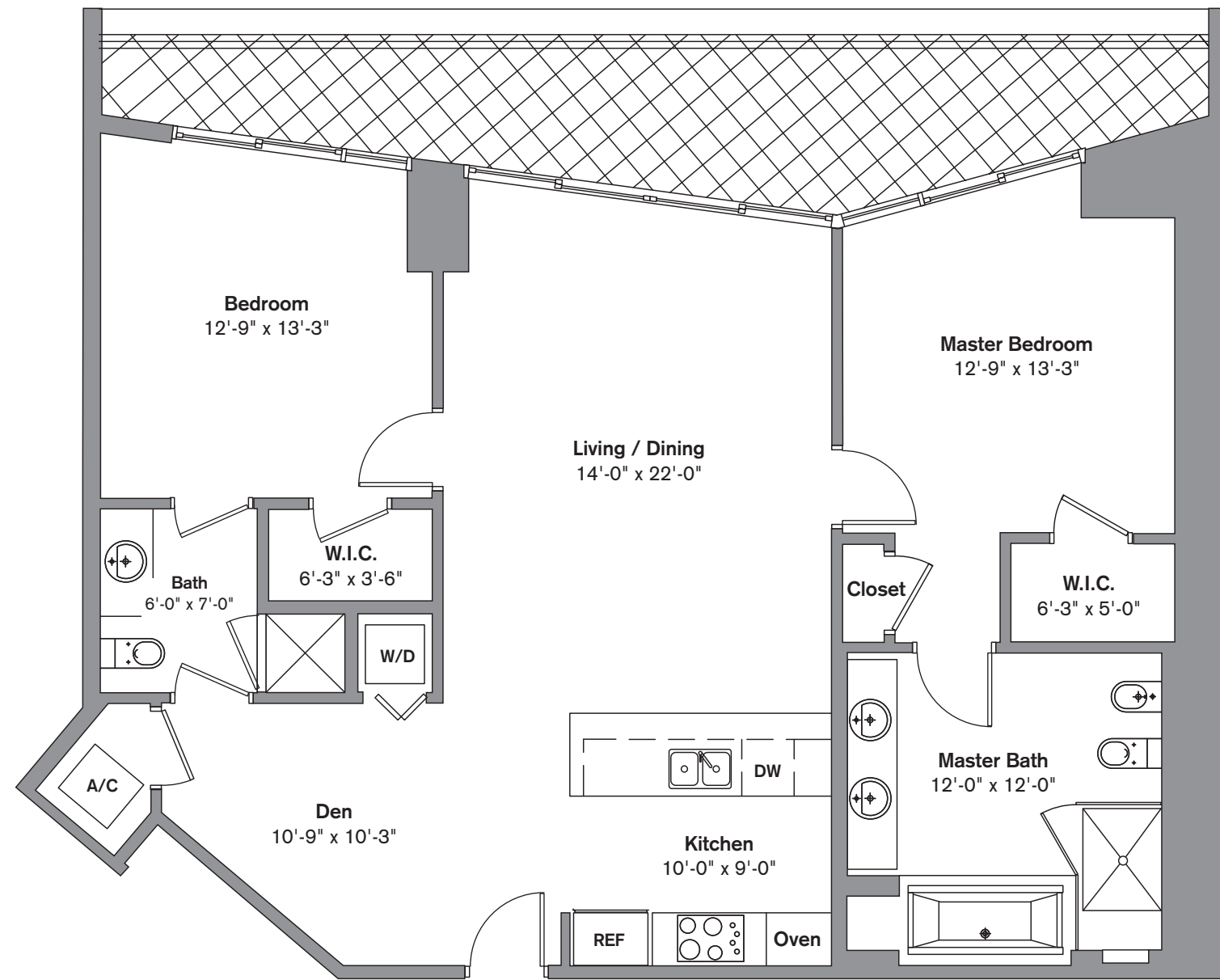
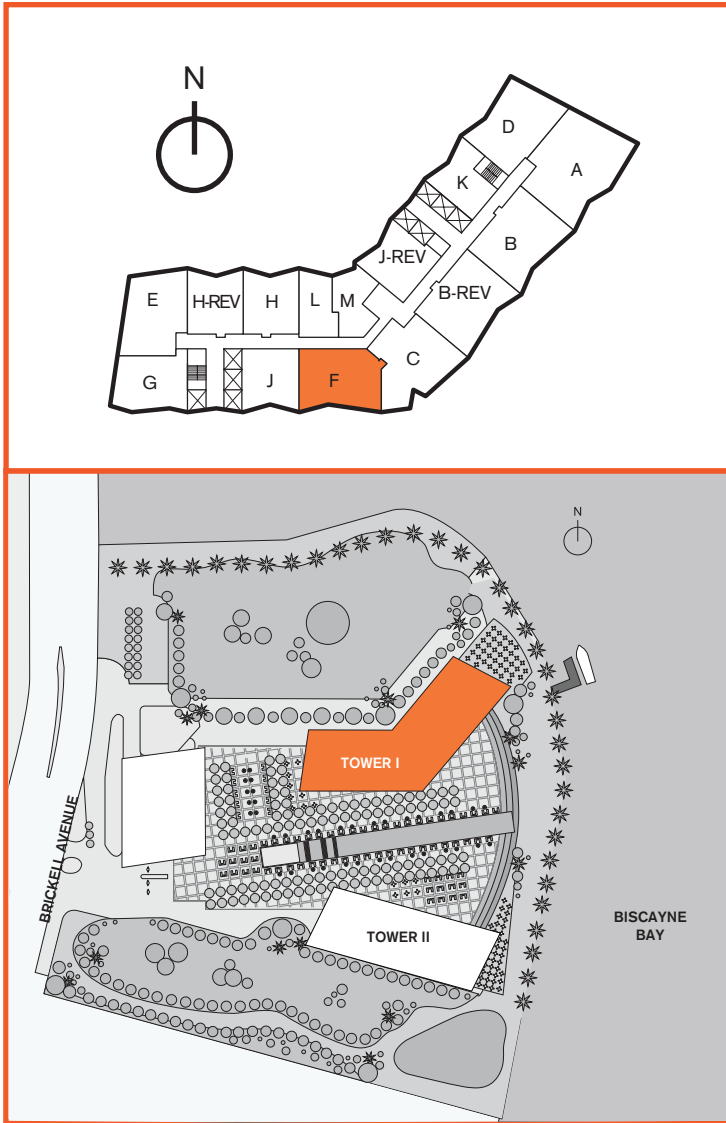
2 Bedroom / 2 Bath
Area under AC: 1,314 SF / 122.07 m²
Balcony: 133 SF / 12.35 m²
Total: 1,447 SF / 134.43 m²



Stated dimensions are measured to the exterior boundaries of the exterior walls and the centerline of interior demising walls and in fact vary from the dimensions that would be determined by using the description and definition of the "Unit" set forth in the Declaration (which generally only includes the interior airspace between the perimeter walls and excludes interior structural components). Additionally, measurements of rooms set forth on any floor plan are generally taken at the greatest points of each given room (as if the room were a perfect rectangle), without regard for any cutouts. Accordingly, the area of the actual room will typically be smaller than the product obtained by multiplying the stated length times width. All dimensions are approximate and all floor plans and development plans are subject to change.



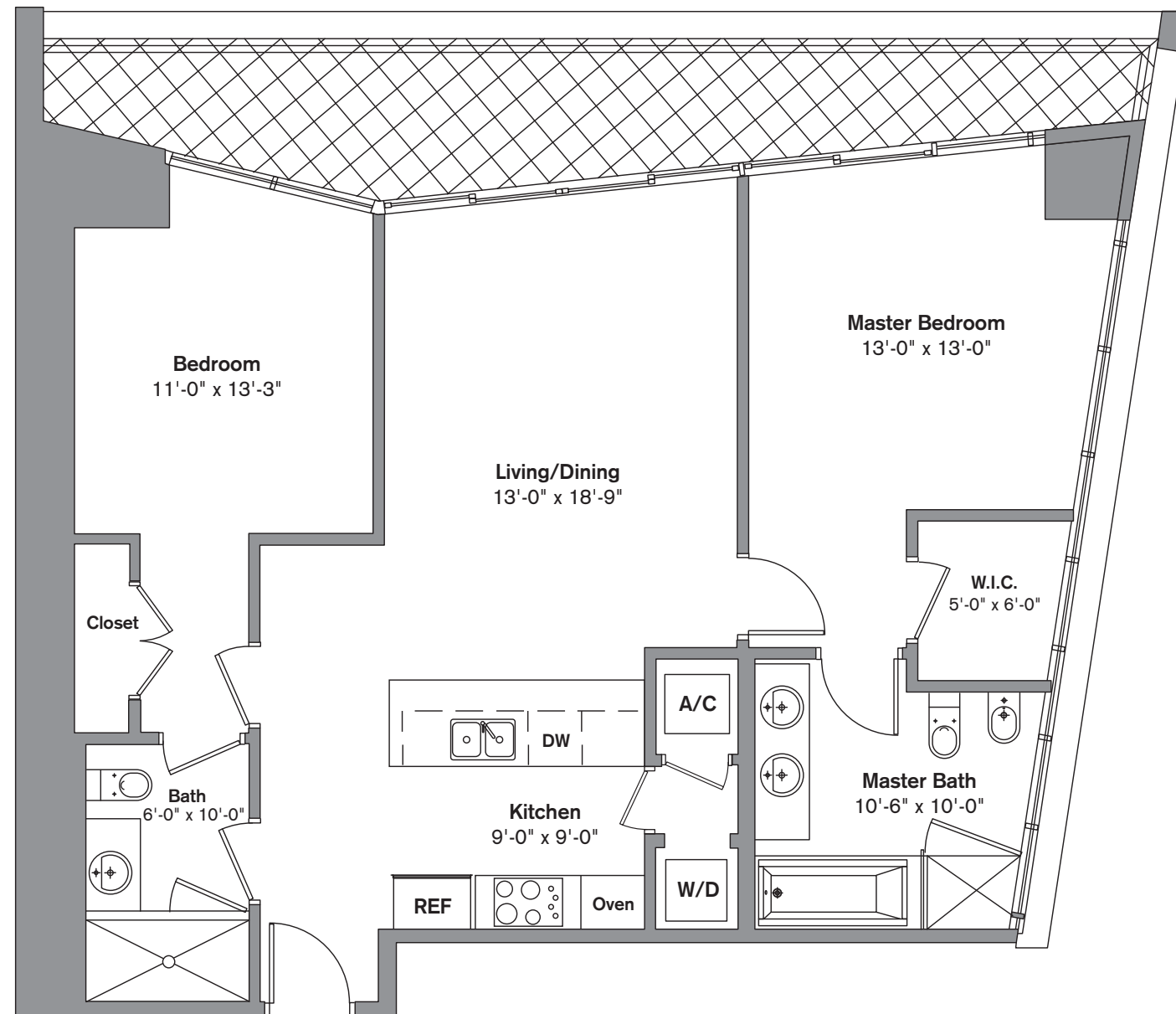
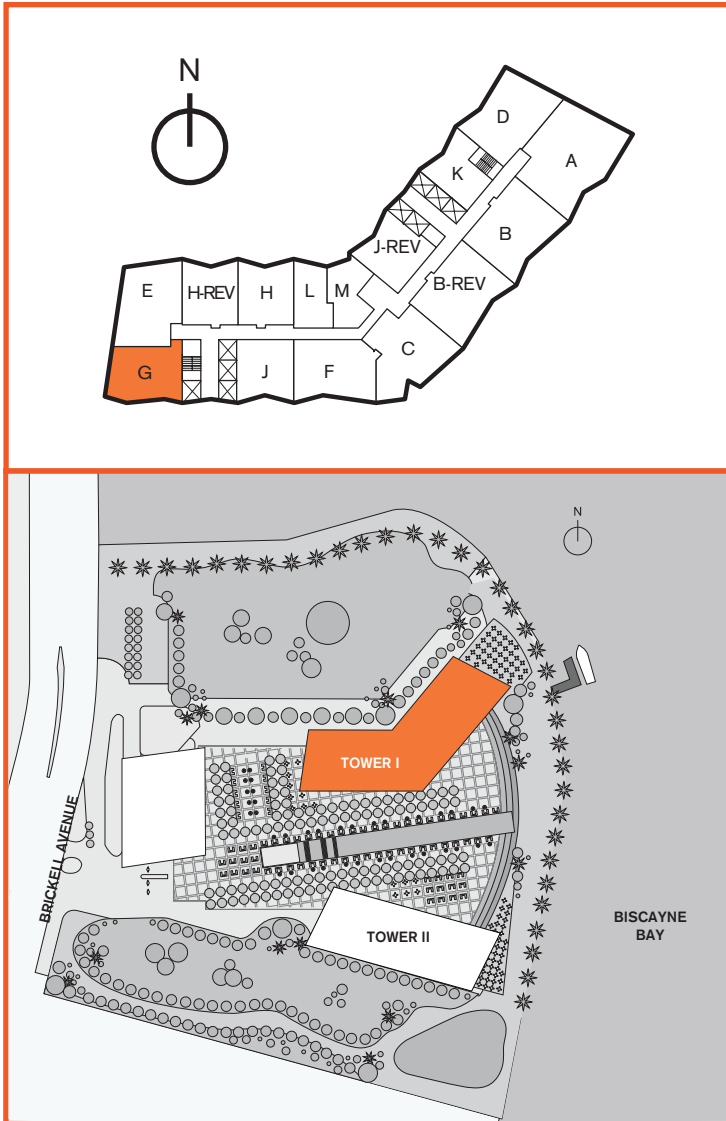
2 Bedroom / 2 Bath / Den
Area under AC: 1,312 SF / 121.88 m²
Balcony: 213 SF / 19.78 m²
Total: 1,525 SF / 141.67 m²



Stated dimensions are measured to the exterior boundaries of the exterior walls and the centerline of interior demising walls and in fact vary from the dimensions that would be determined by using the description and definition of the "Unit" set forth in the Declaration (which generally only includes the interior airspace between the perimeter walls and excludes interior structural components). Additionally, measurements of rooms set forth on any floor plan are generally taken at the greatest points of each given room (as if the room were a perfect rectangle), without regard for any cutouts. Accordingly, the area of the actual room will typically be smaller than the product obtained by multiplying the stated length times width. All dimensions are approximate and all floor plans and development plans are subject to change.



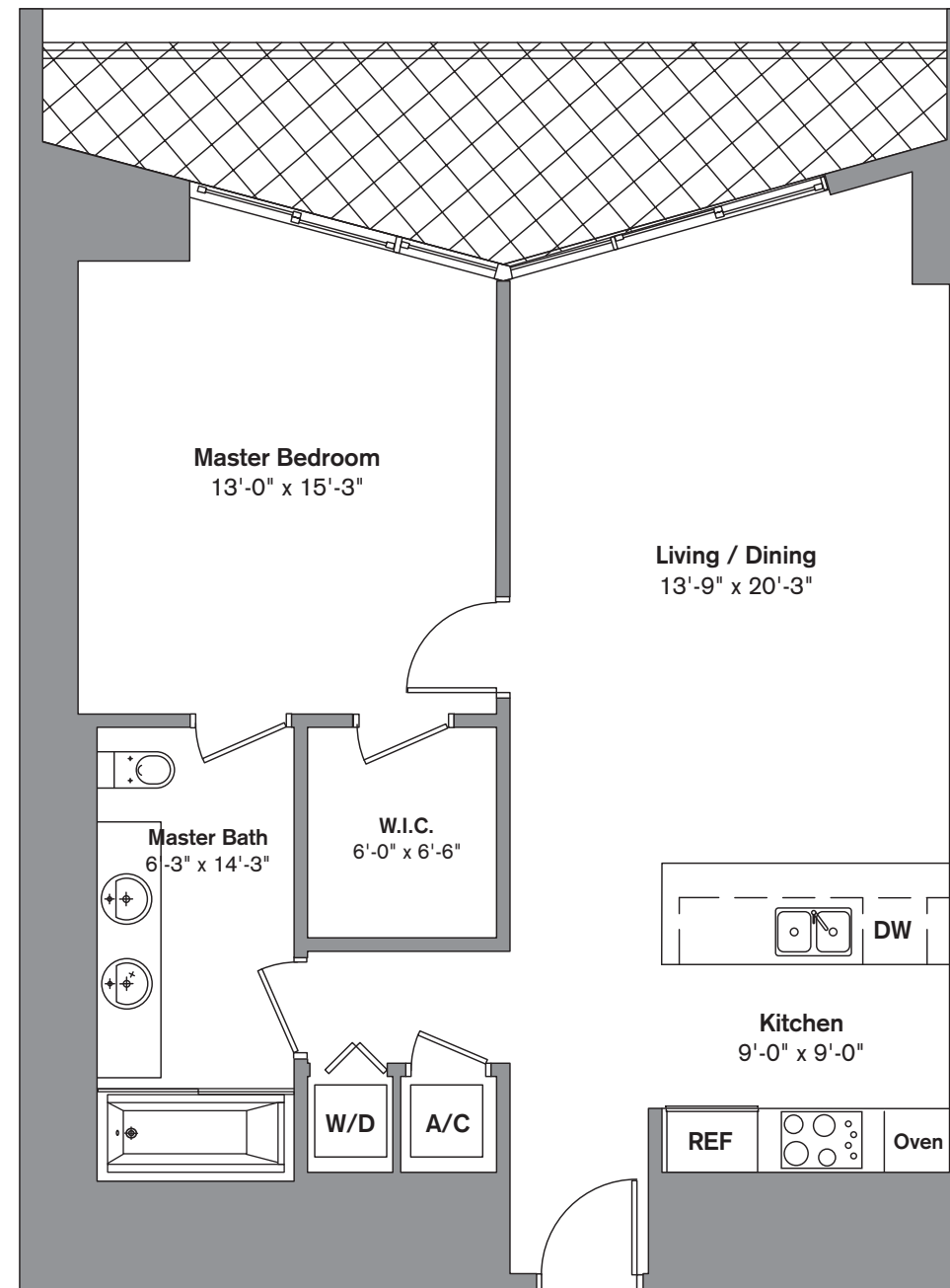
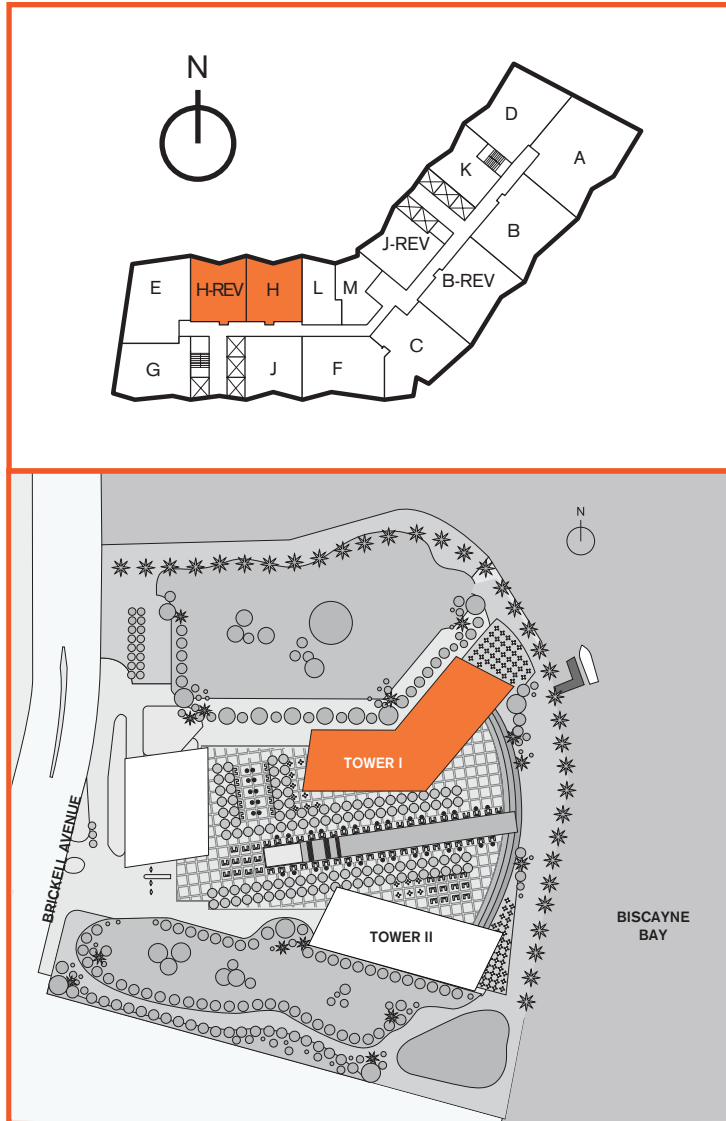
2 Bedroom / 2 Bath
Area under AC: 1,144 SF / 106.28 m²
Balcony: 186 SF / 17.27 m²
Total: 1,330 SF / 123.56 m²



Stated dimensions are measured to the exterior boundaries of the exterior walls and the centerline of interior demising walls and in fact vary from the dimensions that would be determined by using the description and definition of the "Unit" set forth in the Declaration (which generally only includes the interior airspace between the perimeter walls and excludes interior structural components). Additionally, measurements of rooms set forth on any floor plan are generally taken at the greatest points of each given room (as if the room were a perfect rectangle), without regard for any cutouts. Accordingly, the area of the actual room will typically be smaller than the product obtained by multiplying the stated length times width. All dimensions are approximate and all floor plans and development plans are subject to change.



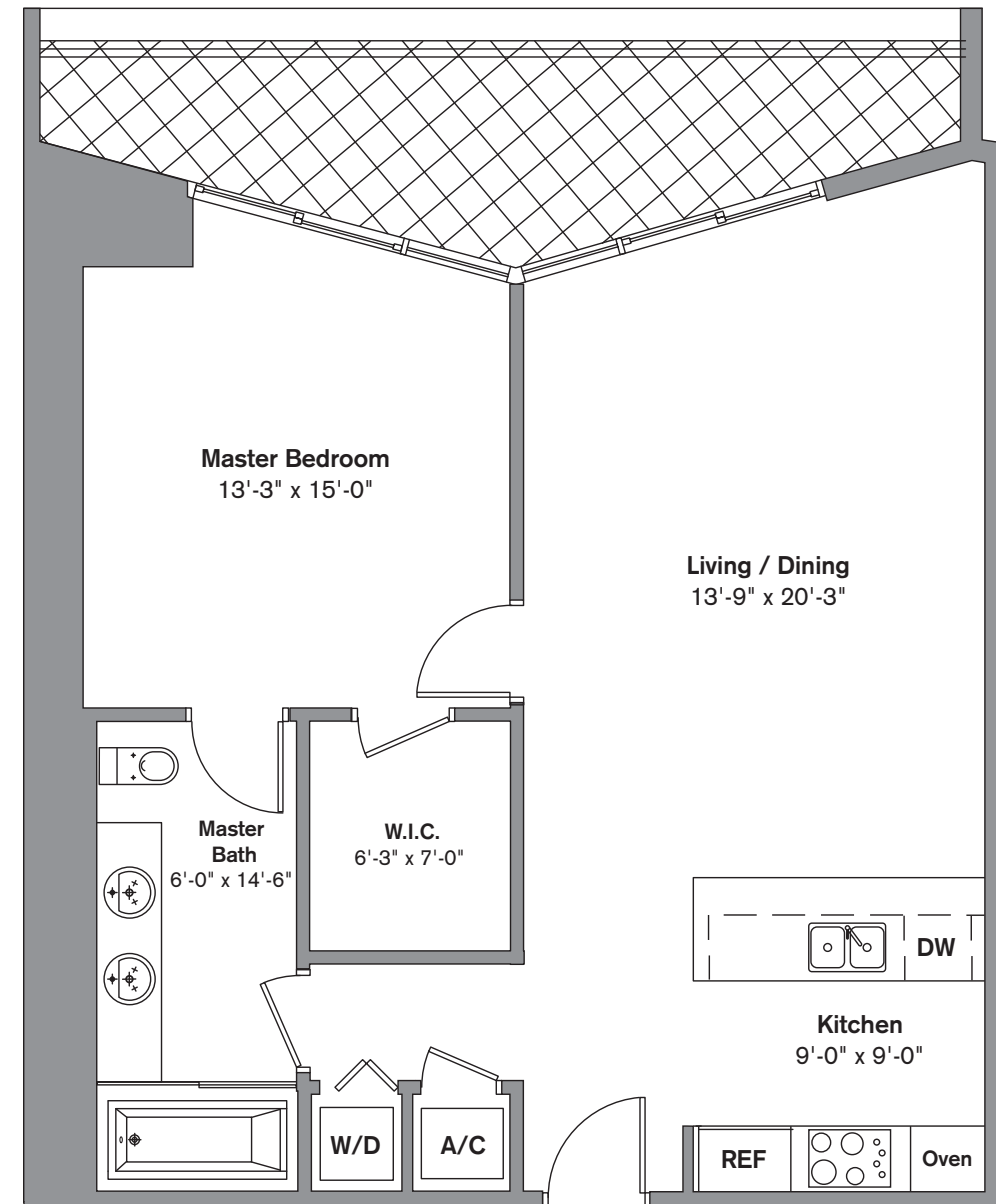
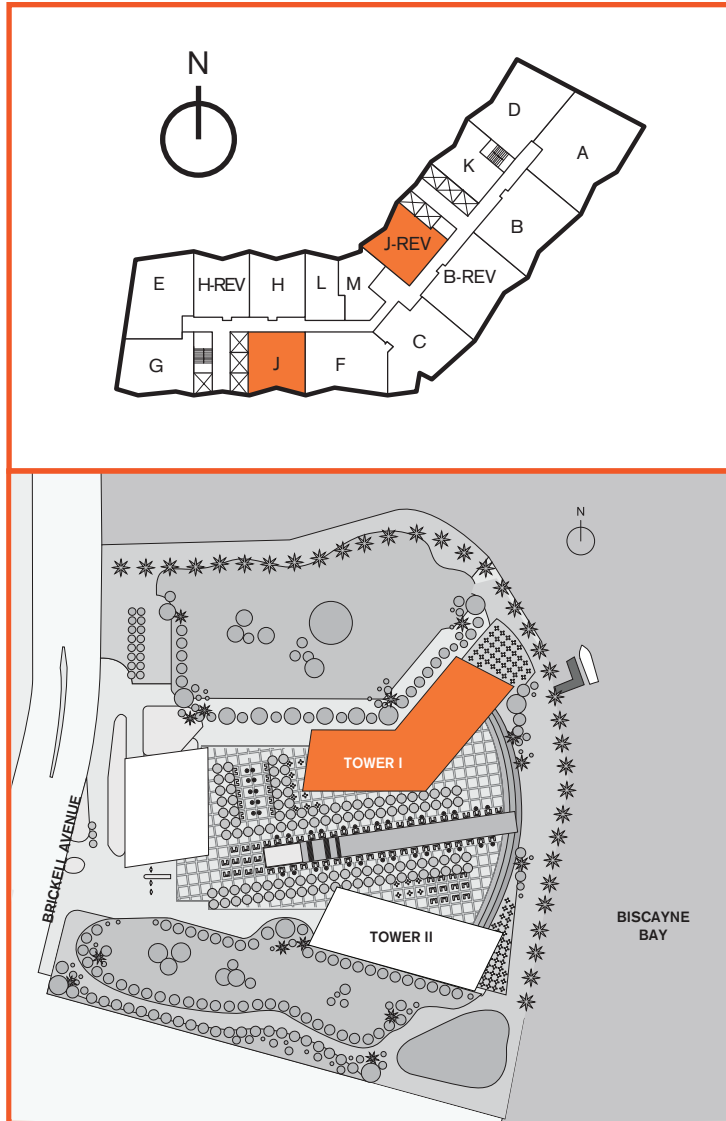
1 Bedroom / 1 Bath
 Area under AC: 947 SF / 87.97 m²
 Balcony: 144 SF / 13.37 m²
 Total: 1,091 SF / 101.35 m²



Stated dimensions are measured to the exterior boundaries of the exterior walls and the centerline of interior demising walls and in fact vary from the dimensions that would be determined by using the description and definition of the "Unit" set forth in the Declaration (which generally only includes the interior airspace between the perimeter walls and excludes interior structural components). Additionally, measurements of rooms set forth on any floor plan are generally taken at the greatest points of each given room (as if the room were a perfect rectangle), without regard for any cutouts. Accordingly, the area of the actual room will typically be smaller than the product obtained by multiplying the stated length times width. All dimensions are approximate and all floor plans and development plans are subject to change.



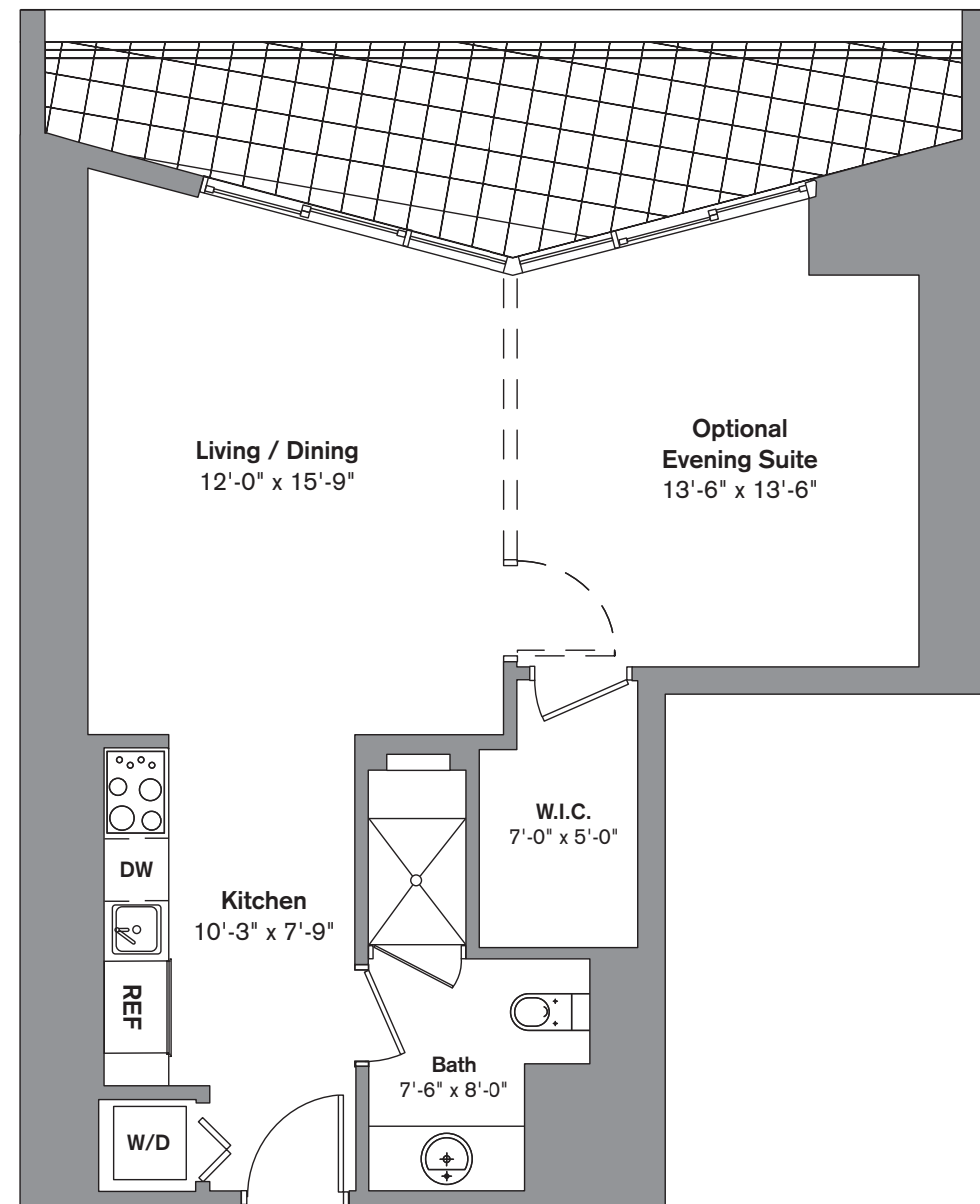
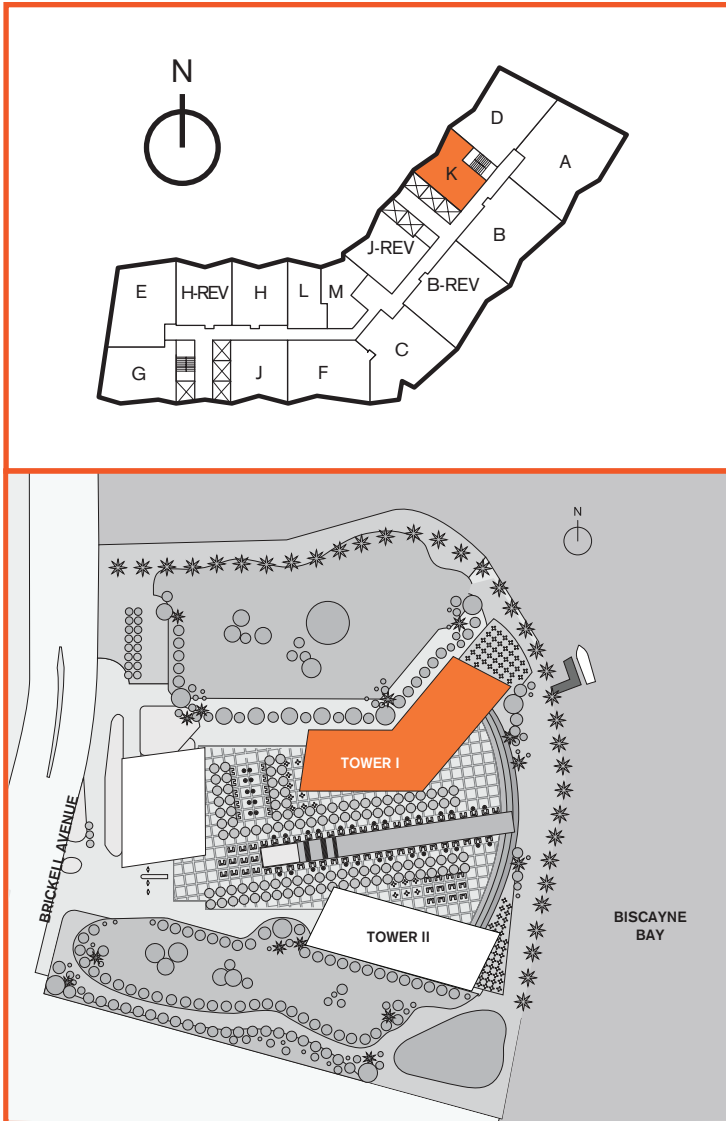
1 Bedroom / 1 Bath
Area under AC: 940 SF / 87.32 m²
Balcony: 142 SF / 13.19 m²
Total: 1,082 SF / 100.52 m²



Stated dimensions are measured to the exterior boundaries of the exterior walls and the centerline of interior demising walls and in fact vary from the dimensions that would be determined by using the description and definition of the "Unit" set forth in the Declaration (which generally only includes the interior airspace between the perimeter walls and excludes interior structural components). Additionally, measurements of rooms set forth on any floor plan are generally taken at the greatest points of each given room (as if the room were a perfect rectangle), without regard for any cutouts. Accordingly, the area of the actual room will typically be smaller than the product obtained by multiplying the stated length times width. All dimensions are approximate and all floor plans and development plans are subject to change.



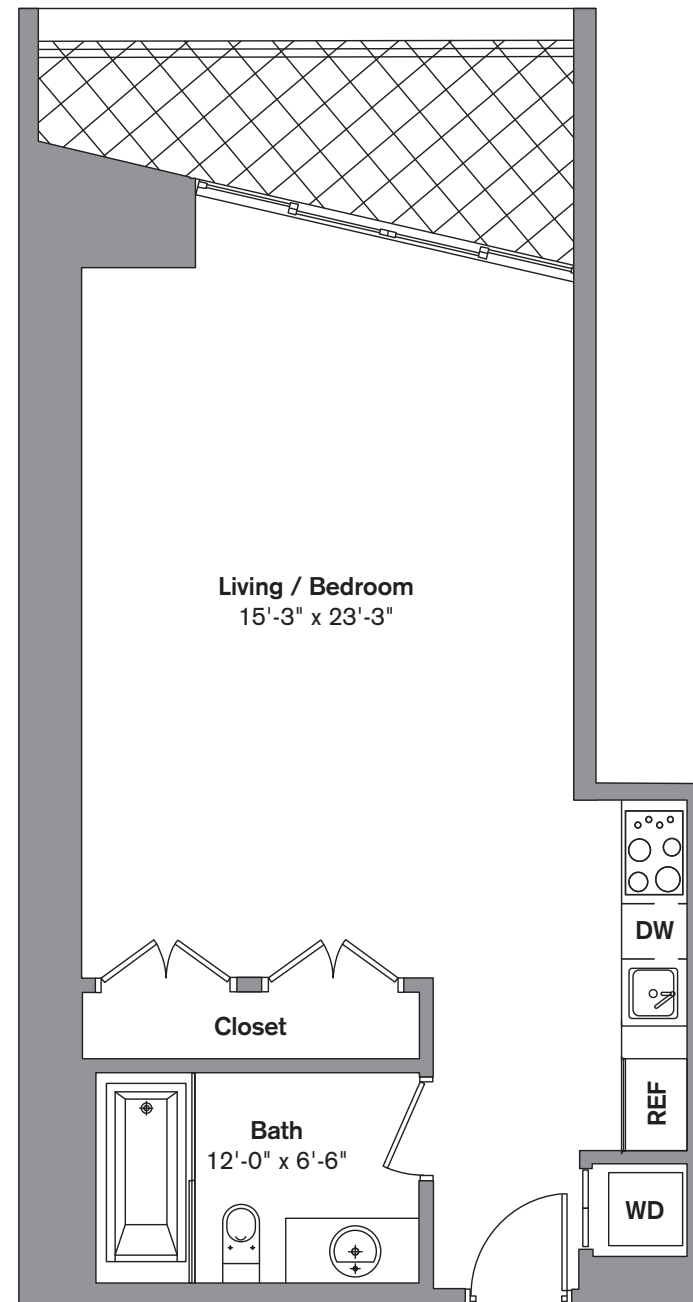
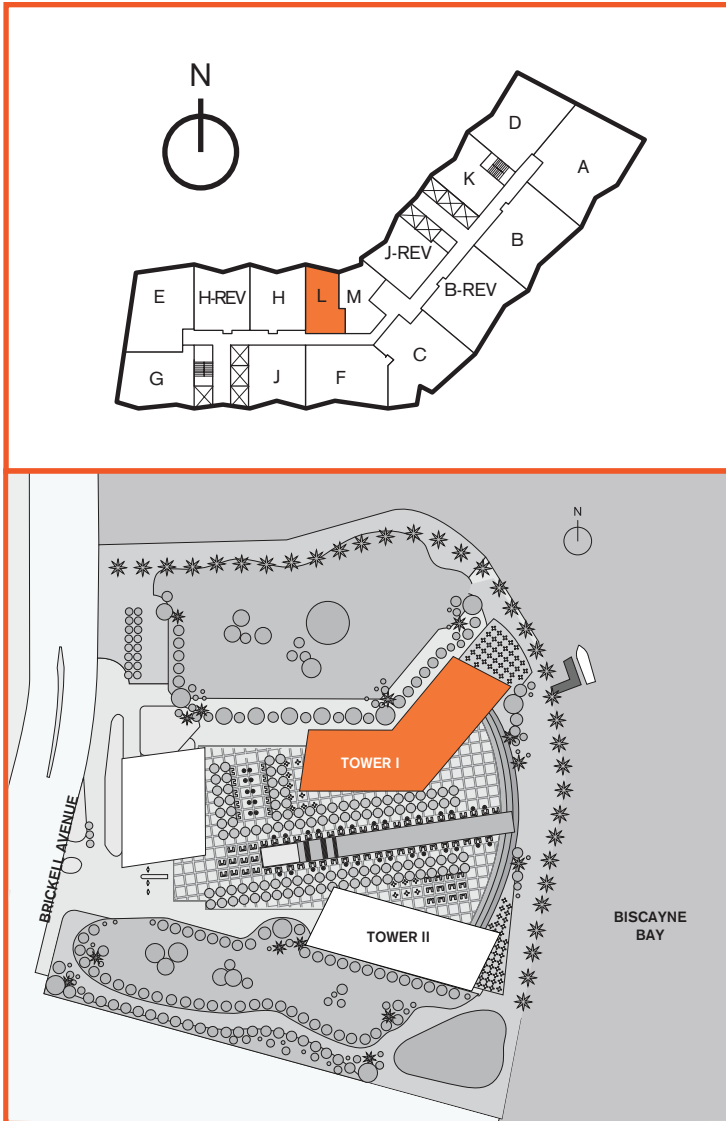
1 Bedroom / 1 Bath
 Area under AC: 726 SF / 67.44 m²
 Balcony: 138 SF / 12.82 m²
 Total: 864 SF / 80.26 m²



Stated dimensions are measured to the exterior boundaries of the exterior walls and the centerline of interior demising walls and in fact vary from the dimensions that would be determined by using the description and definition of the "Unit" set forth in the Declaration (which generally only includes the interior airspace between the perimeter walls and excludes interior structural components). Additionally, measurements of rooms set forth on any floor plan are generally taken at the greatest points of each given room (as if the room were a perfect rectangle), without regard for any cutouts. Accordingly, the area of the actual room will typically be smaller than the product obtained by multiplying the stated length times width. All dimensions are approximate and all floor plans and development plans are subject to change.

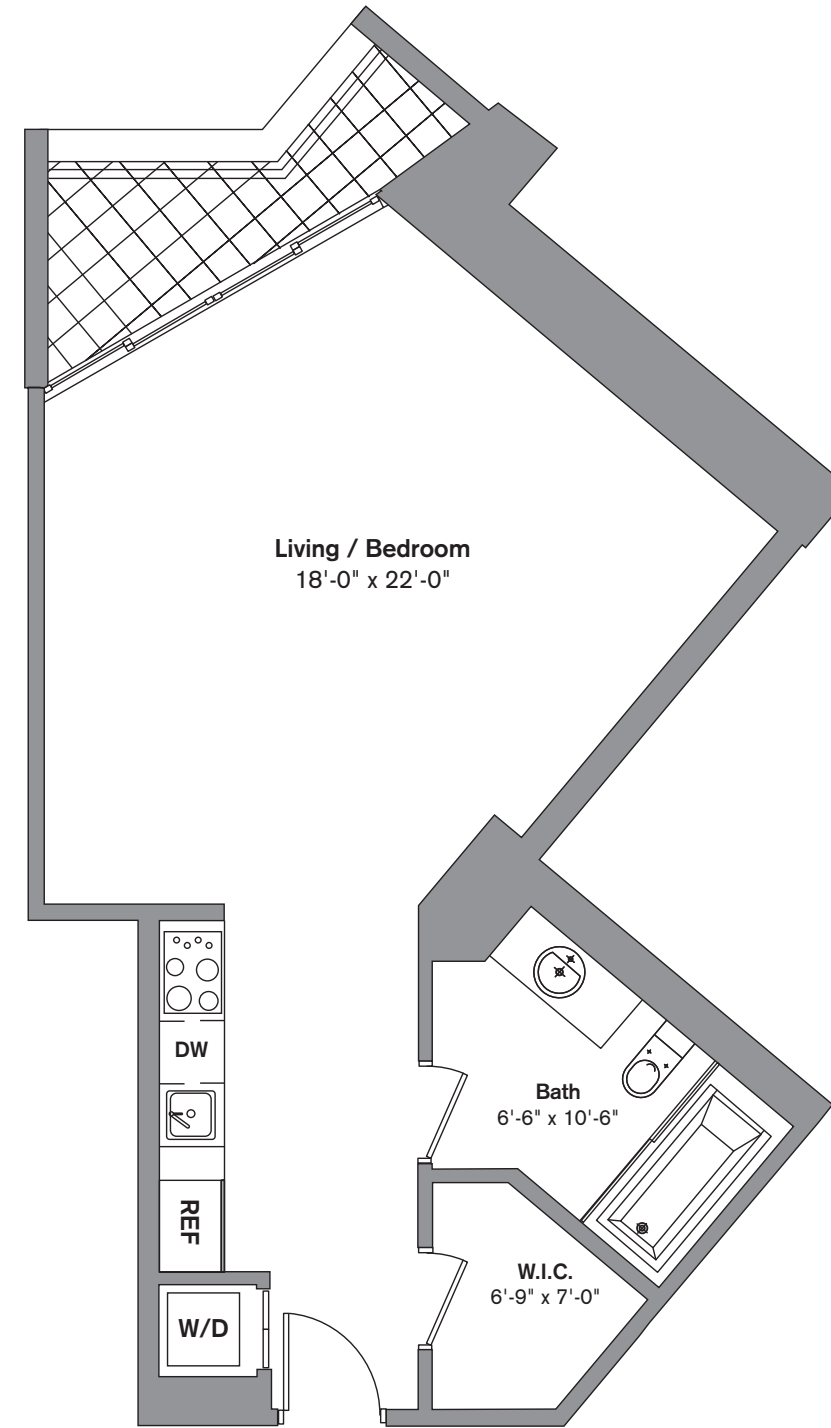
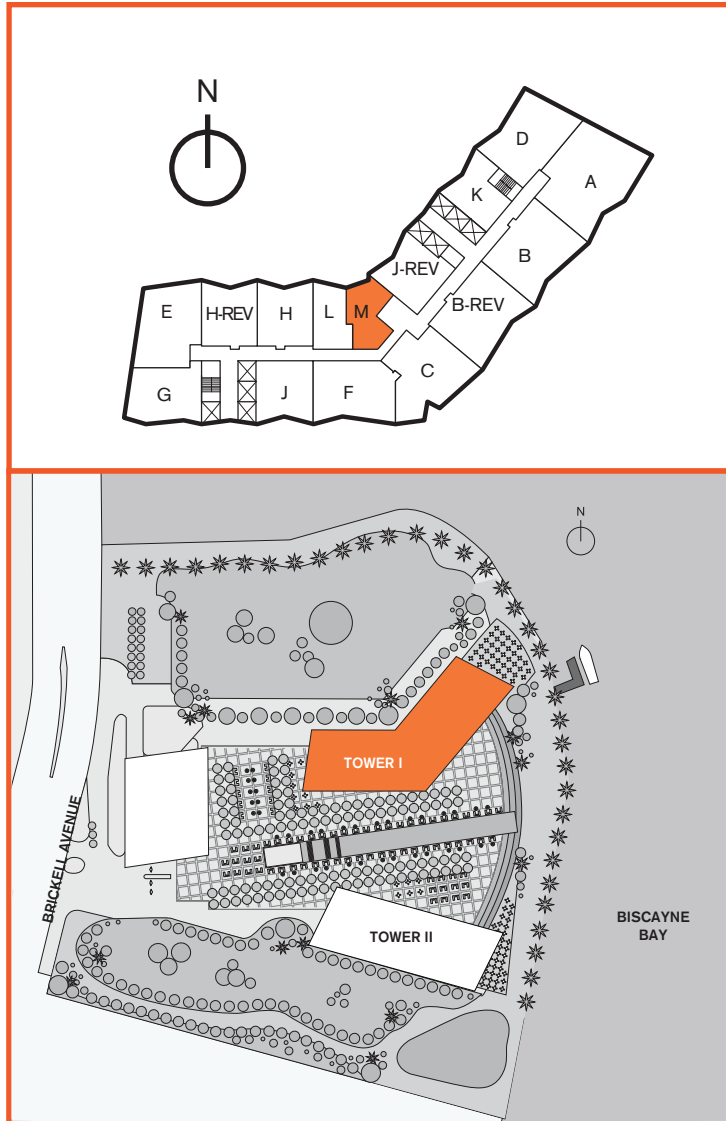


Studio
Area under AC: 640 SF / 59.45 m²
Balcony: 86 SF / 7.98 m²
Total: 726 SF / 67.44 m²



Stated dimensions are measured to the exterior boundaries of the exterior walls and the centerline of interior demising walls and in fact vary from the dimensions that would be determined by using the description and definition of the "Unit" set forth in the Declaration (which generally only includes the interior airspace between the perimeter walls and excludes interior structural components). Additionally, measurements of rooms set forth on any floor plan are generally taken at the greatest points of each given room (as if the room were a perfect rectangle), without regard for any cutouts. Accordingly, the area of the actual room will typically be smaller than the product obtained by multiplying the stated length times width. All dimensions are approximate and all floor plans and development plans are subject to change.

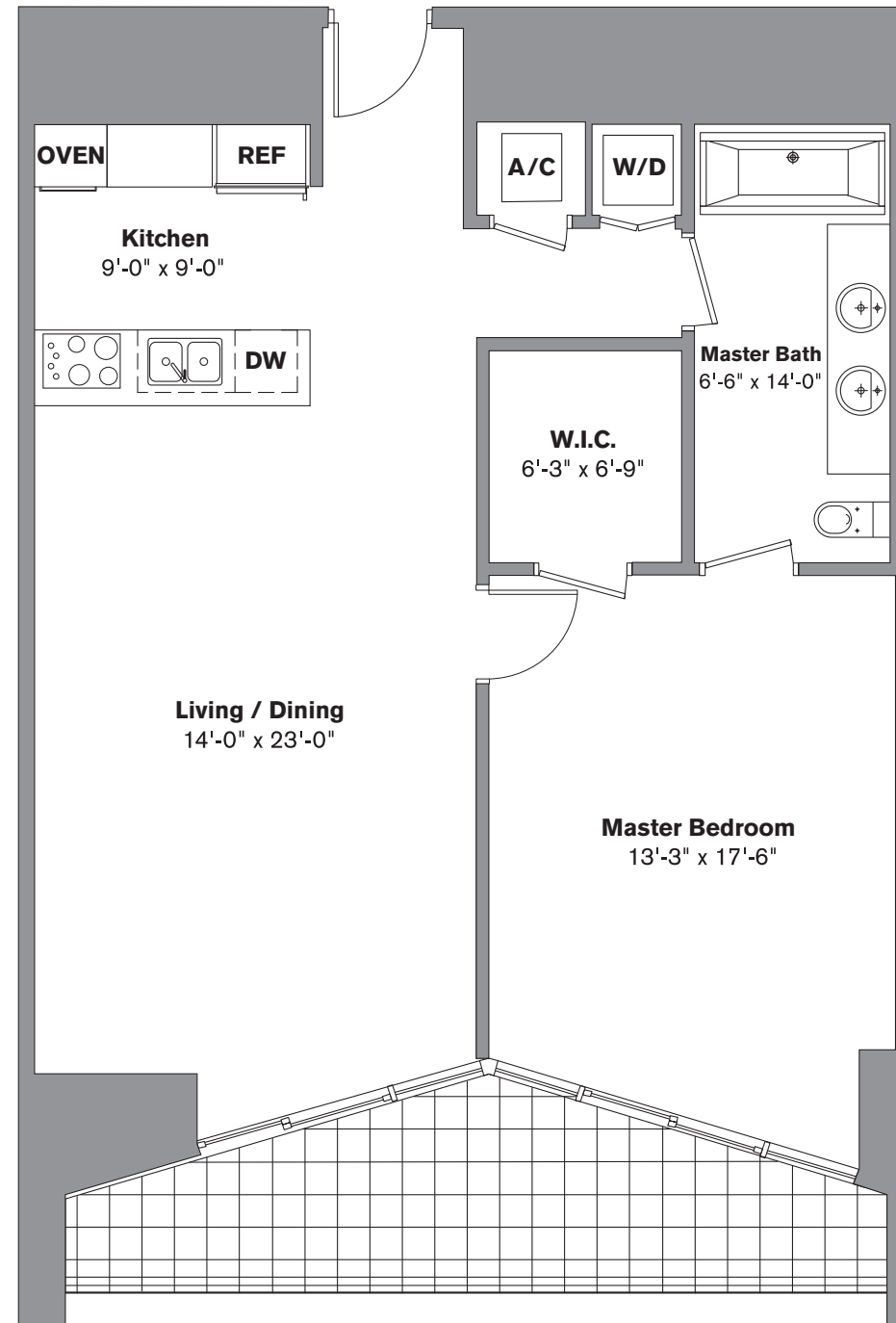
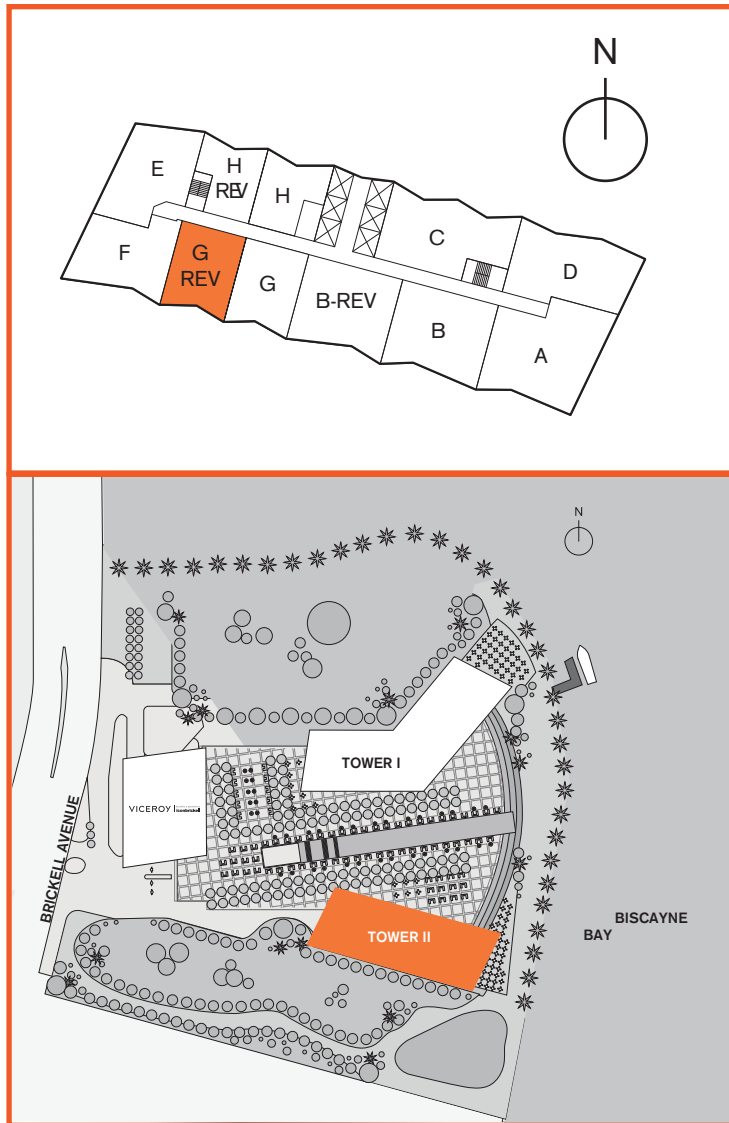
Studio
Area under AC: 675 SF / 62.70 m²
Balcony: 55 SF / 5.10 m²
Total: 730 SF / 67.81 m²



Stated dimensions are measured to the exterior boundaries of the exterior walls and the centerline of interior demising walls and in fact vary from the dimensions that would be determined by using the description and definition of the "Unit" set forth in the Declaration (which generally only includes the interior airspace between the perimeter walls and excludes interior structural components). Additionally, measurements of rooms set forth on any floor plan are generally taken at the greatest points of each given room (as if the room were a perfect rectangle), without regard for any cutouts. Accordingly, the area of the actual room will typically be smaller than the product obtained by multiplying the stated length times width. All dimensions are approximate and all floor plans and development plans are subject to change.



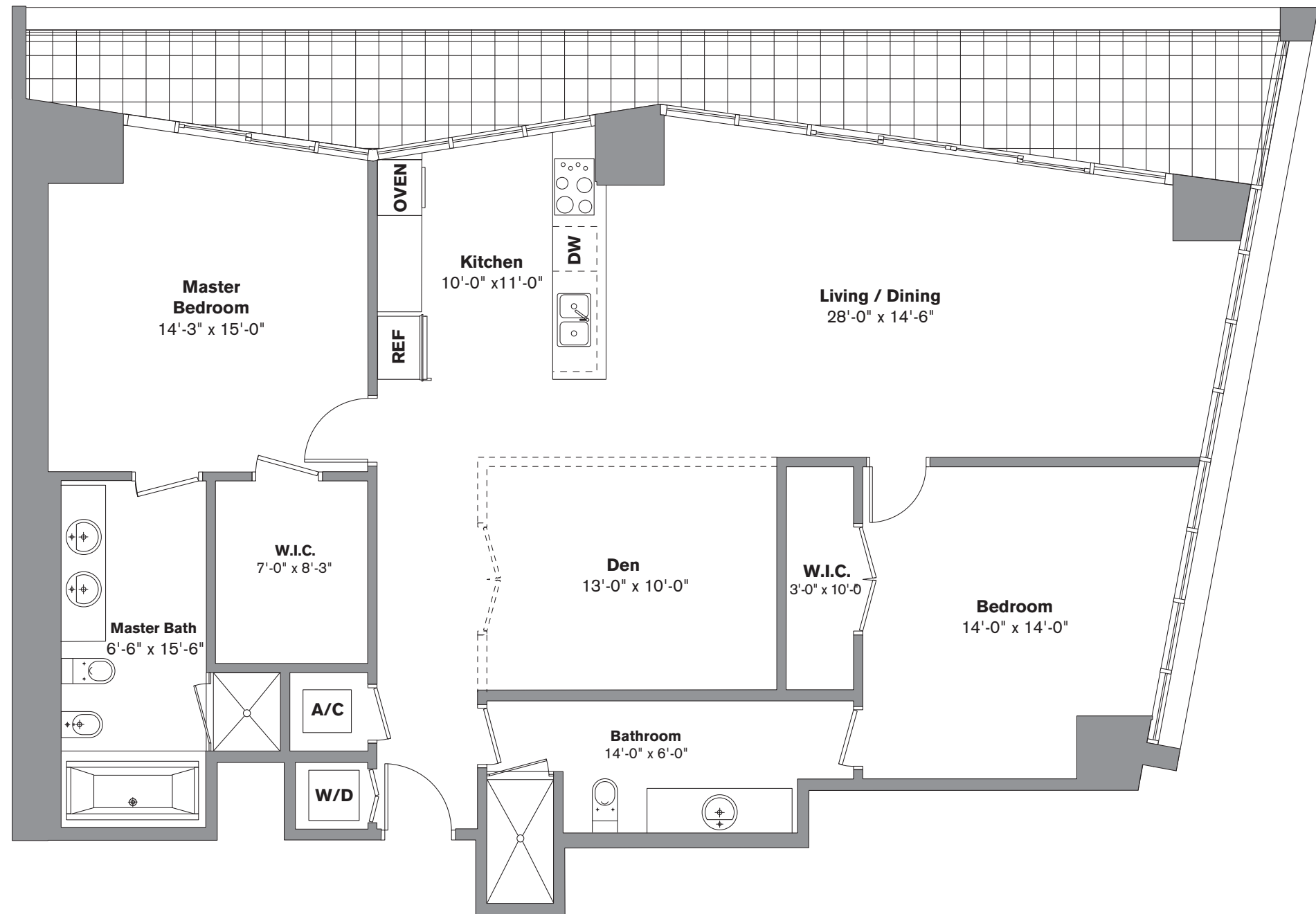
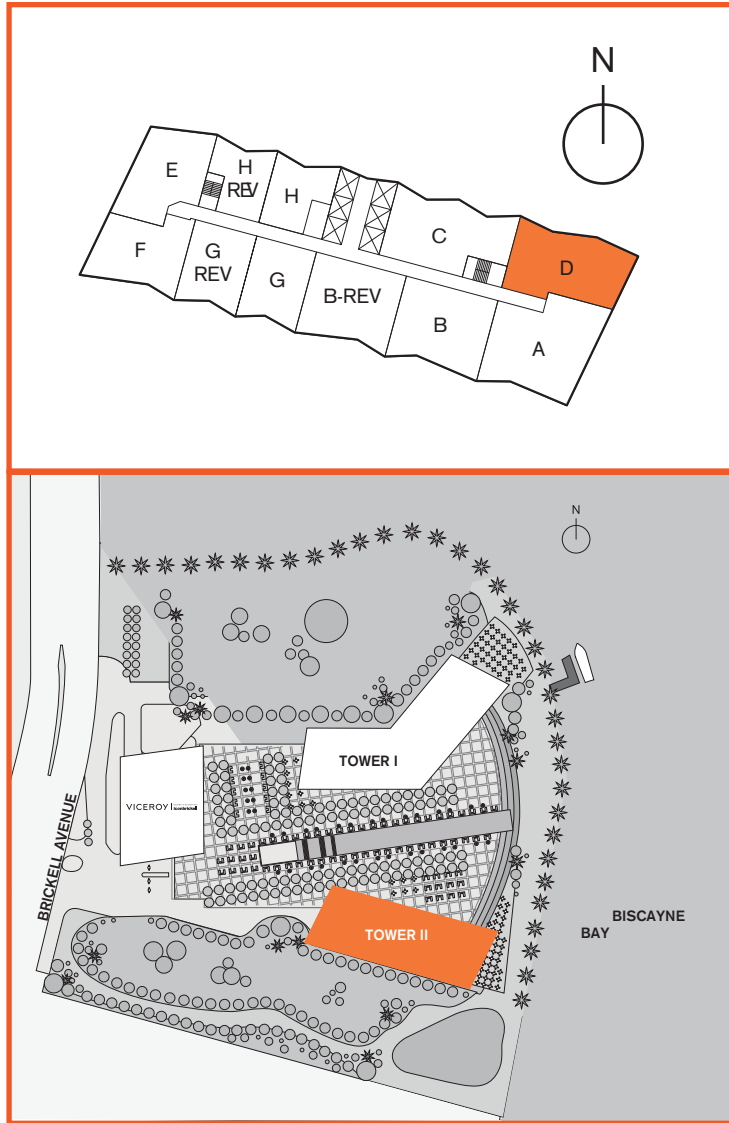
1 Bedroom / 1 Bath
Area under AC: 1,035 SF / 96.15 m²
Balcony: 148 SF / 13.74 m²
Total: 1,183 SF / 109.90 m²



Stated dimensions are measured to the exterior boundaries of the exterior walls and the centerline of interior demising walls and in fact vary from the dimensions that would be determined by using the description and definition of the "Unit" set forth in the Declaration (which generally only includes the interior airspace between the perimeter walls and excludes interior structural components). Additionally, measurements of rooms set forth on any floor plan are generally taken at the greatest points of each given room (as if the room were a perfect rectangle), without regard for any cutouts. Accordingly, the area of the actual room will typically be smaller than the product obtained by multiplying the stated length times width. All dimensions are approximate and all floor plans and development plans are subject to change.

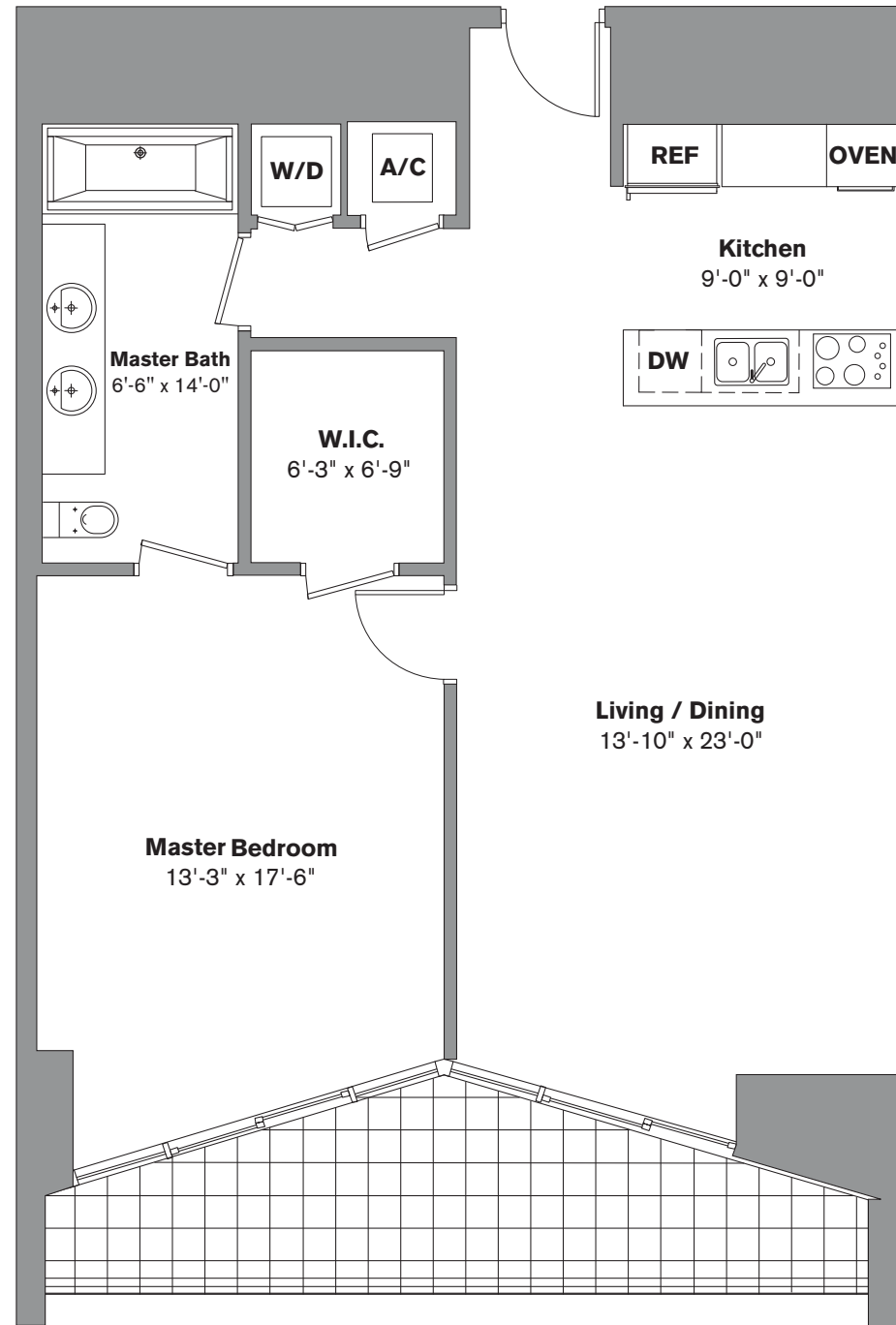
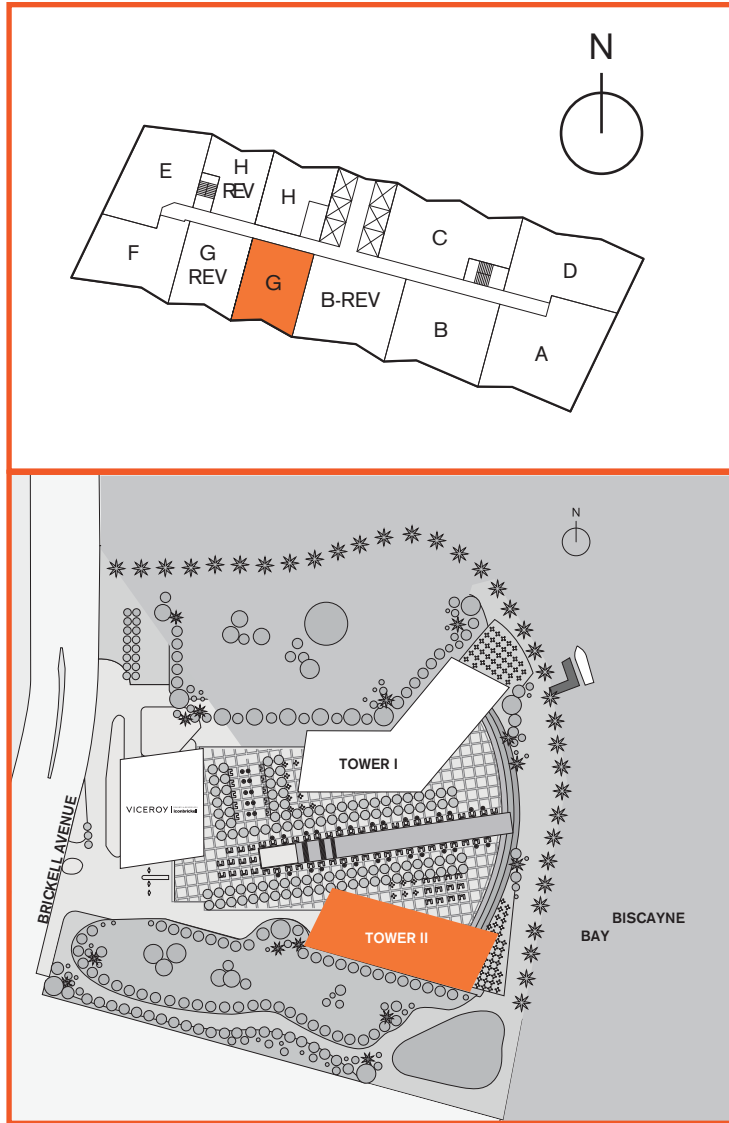


2 Bedroom / 2 Bath / Den
Area under AC: 1,654 SF / 153.66 m²
Balcony: 268 SF / 24.89 m²
Total: 1,922 SF / 178.55 m²



Stated dimensions are measured to the exterior boundaries of the exterior walls and the centerline of interior demising walls and in fact vary from the dimensions that would be determined by using the description and definition of the "Unit" set forth in the Declaration (which generally only includes the interior airspace between the perimeter walls and excludes interior structural components). Additionally, measurements of rooms set forth on any floor plan are generally taken at the greatest points of each given room (as if the room were a perfect rectangle), without regard for any cutouts. Accordingly, the area of the actual room will typically be smaller than the product obtained by multiplying the stated length times width. All dimensions are approximate and all floor plans and development plans are subject to change.

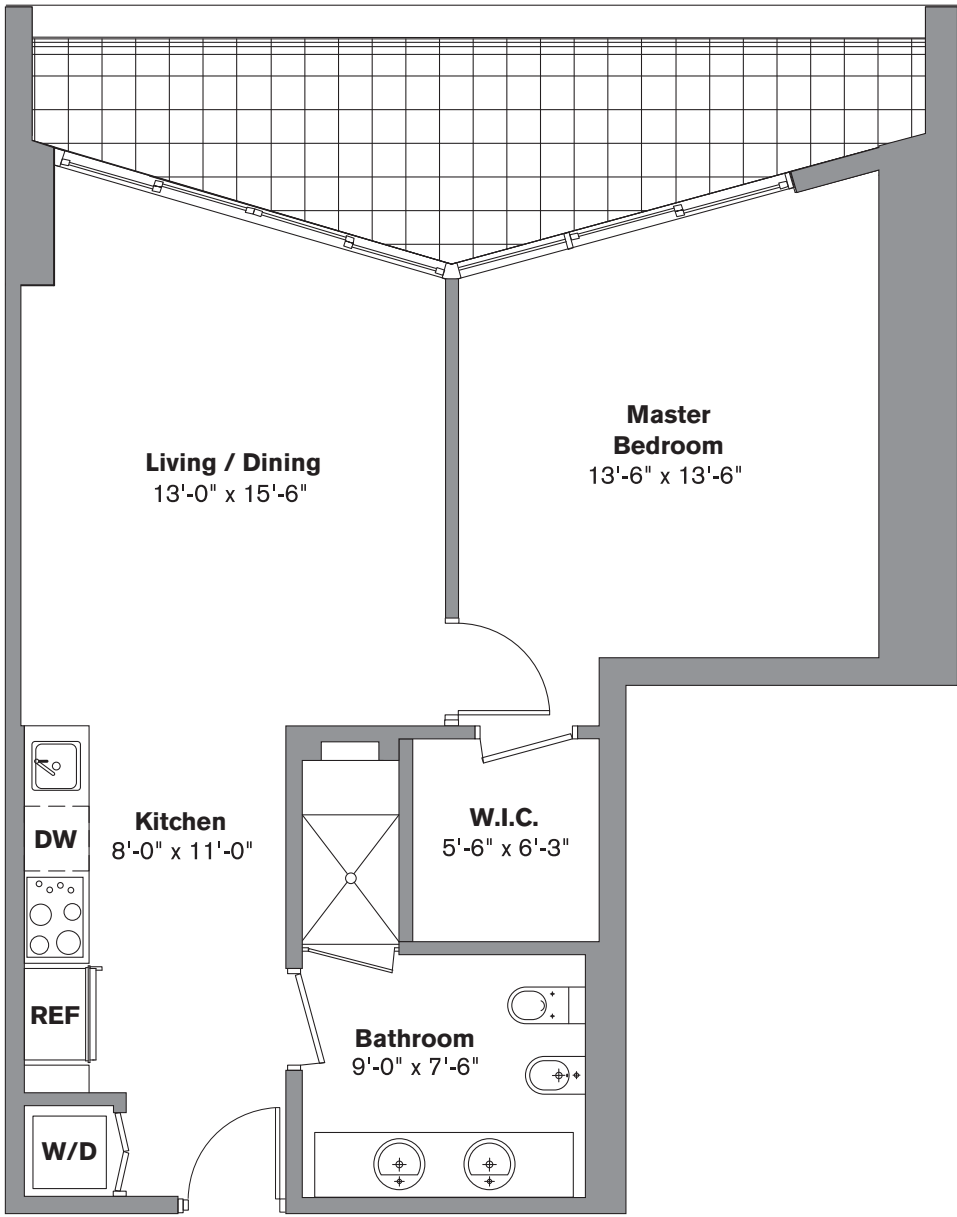
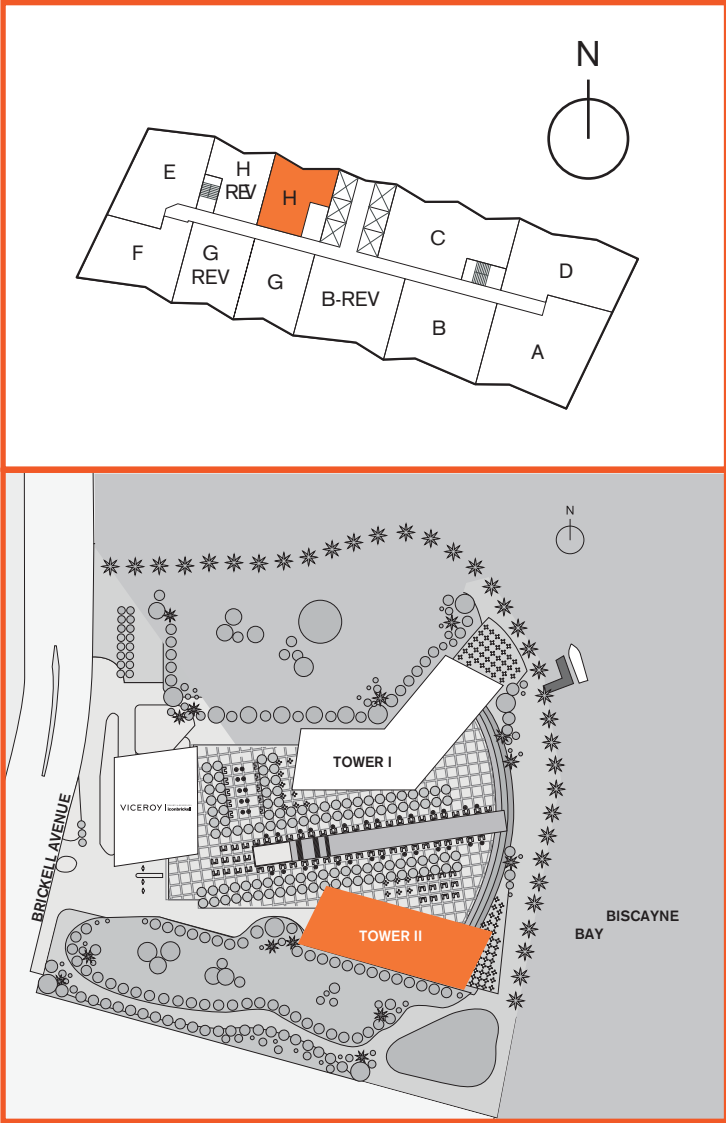
1 Bedroom / 1 Bath
Area under AC: 984 SF / 91.41 m²
Balcony: 137 SF / 12.72 m²
Total: 1,121 SF / 104.14 m²



Stated dimensions are measured to the exterior boundaries of the exterior walls and the centerline of interior demising walls and in fact vary from the dimensions that would be determined by using the description and definition of the "Unit" set forth in the Declaration (which generally only includes the interior airspace between the perimeter walls and excludes interior structural components). Additionally, measurements of rooms set forth on any floor plan are generally taken at the greatest points of each given room (as if the room were a perfect rectangle), without regard for any cutouts. Accordingly, the area of the actual room will typically be smaller than the product obtained by multiplying the stated length times width. All dimensions are approximate and all floor plans and development plans are subject to change.



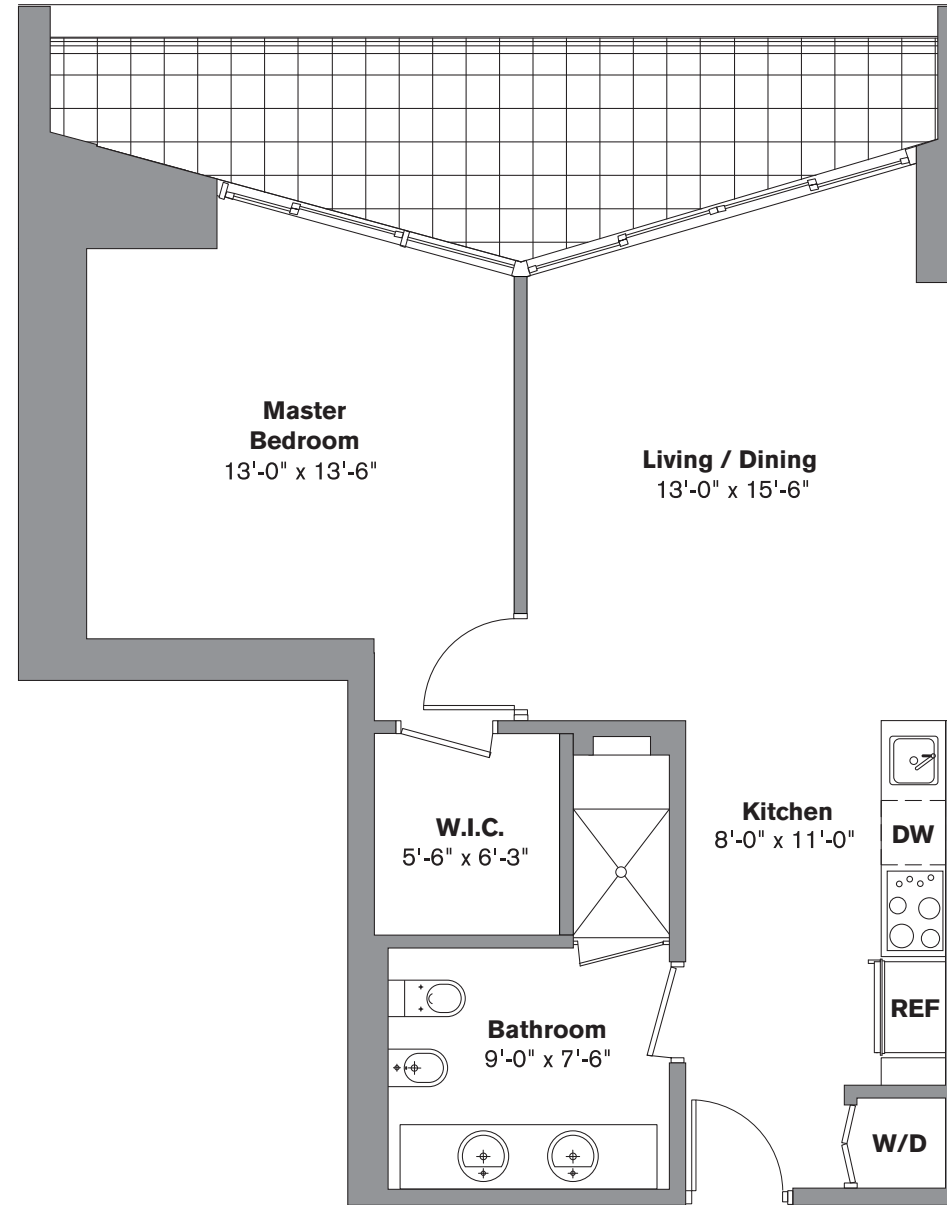
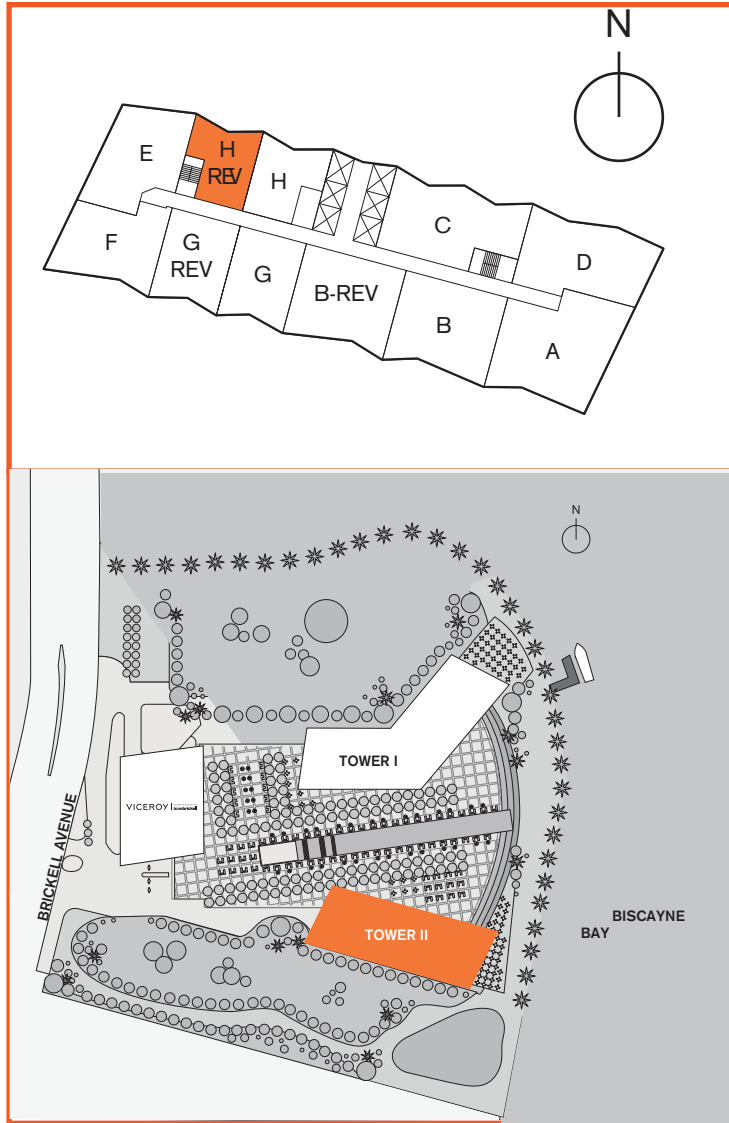
1 Bedroom / 1 Bath
Area under AC: 732 SF / 68.00 m²
Balcony: 142 SF / 13.19 m²
Total: 874 SF / 81.19 m²



Stated dimensions are measured to the exterior boundaries of the exterior walls and the centerline of interior demising walls and in fact vary from the dimensions that would be determined by using the description and definition of the "Unit" set forth in the Declaration (which generally only includes the interior airspace between the perimeter walls and excludes interior structural components). Additionally, measurements of rooms set forth on any floor plan are generally taken at the greatest points of each given room (as if the room were a perfect rectangle), without regard for any cutouts. Accordingly, the area of the actual room will typically be smaller than the product obtained by multiplying the stated length times width. All dimensions are approximate and all floor plans and development plans are subject to change.

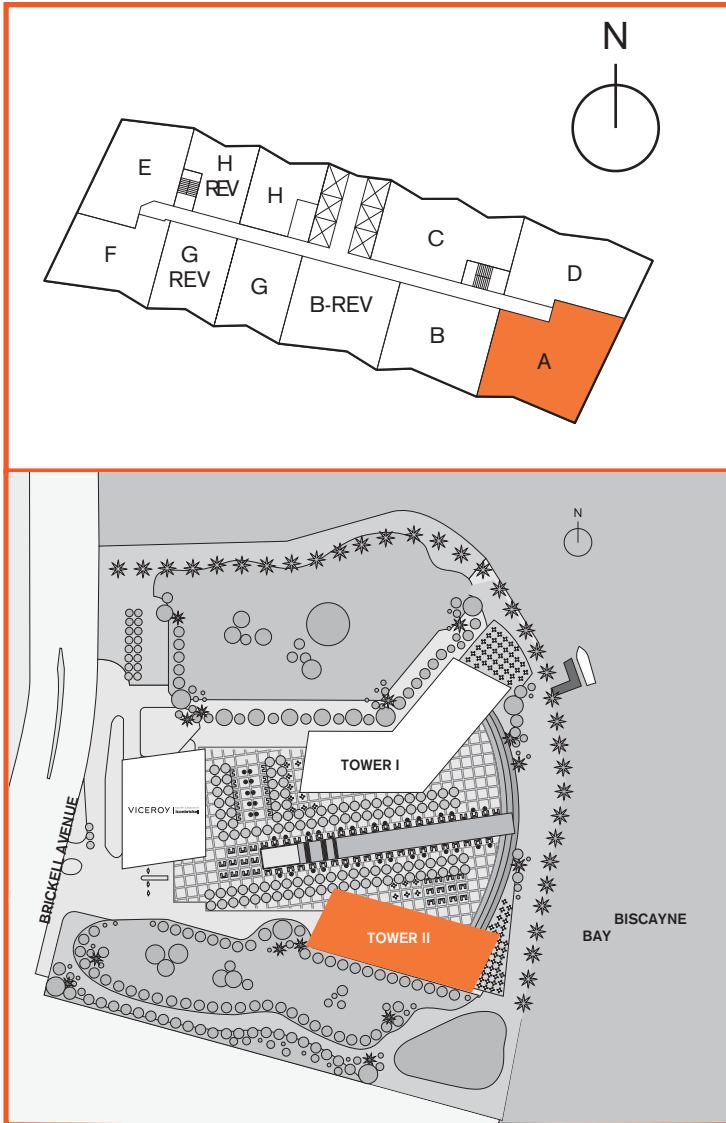


1 Bedroom / 1 Bath
Area under AC: 732 SF / 68.00 m²
Balcony: 142 SF / 13.19 m²
Total: 874 SF / 81.19 m²



Stated dimensions are measured to the exterior boundaries of the exterior walls and the centerline of interior demising walls and in fact vary from the dimensions that would be determined by using the description and definition of the "Unit" set forth in the Declaration (which generally only includes the interior airspace between the perimeter walls and excludes interior structural components). Additionally, measurements of rooms set forth on any floor plan are generally taken at the greatest points of each given room (as if the room were a perfect rectangle), without regard for any cutouts. Accordingly, the area of the actual room will typically be smaller than the product obtained by multiplying the stated length times width. All dimensions are approximate and all floor plans and development plans are subject to change.

3 Bedroom / 2 Bath
Area under AC: 1,870 SF / 173.72 m²
Balcony: 210 SF / 19.50 m²
Total: 2,080 SF / 193.23 m²

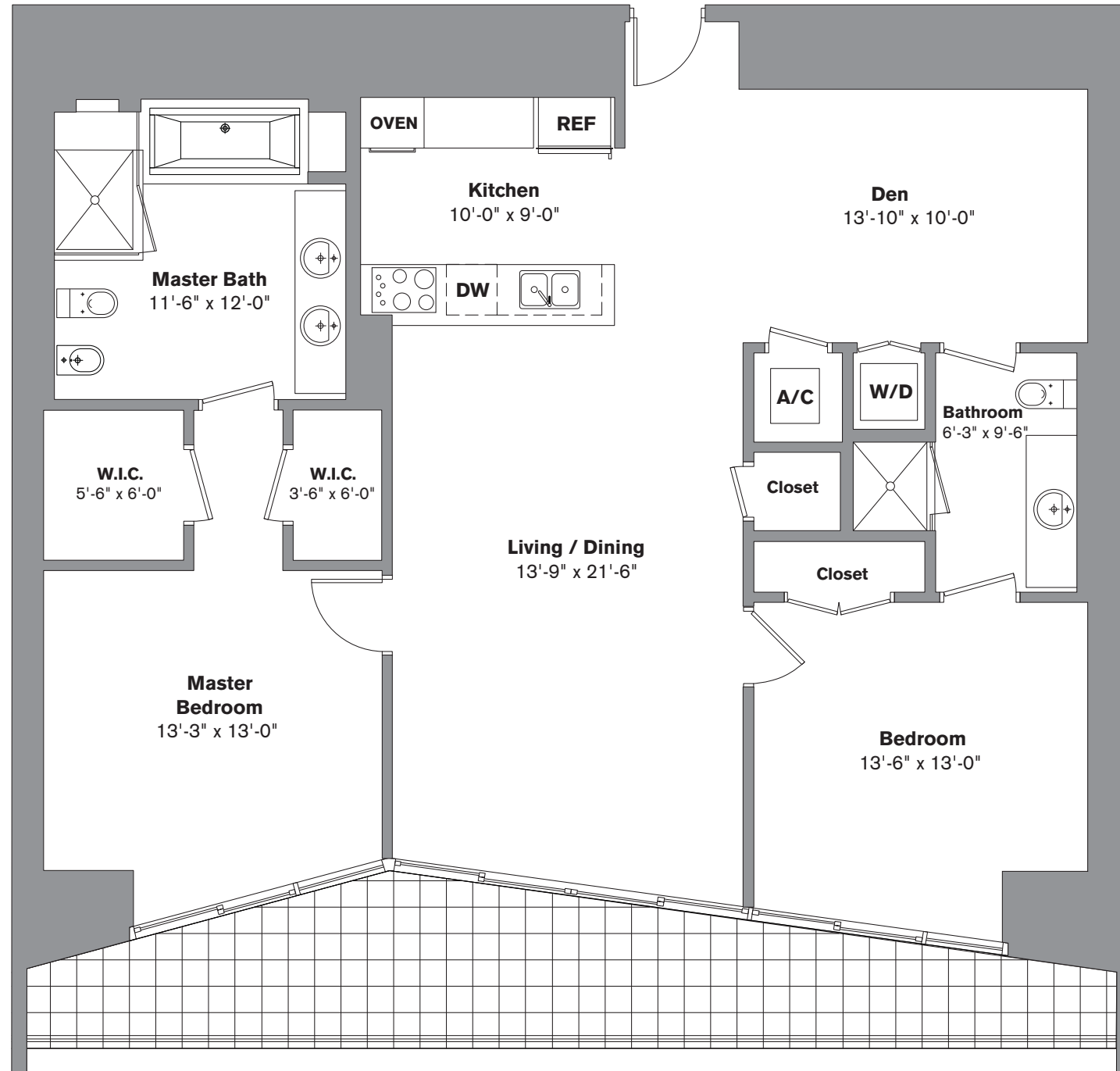
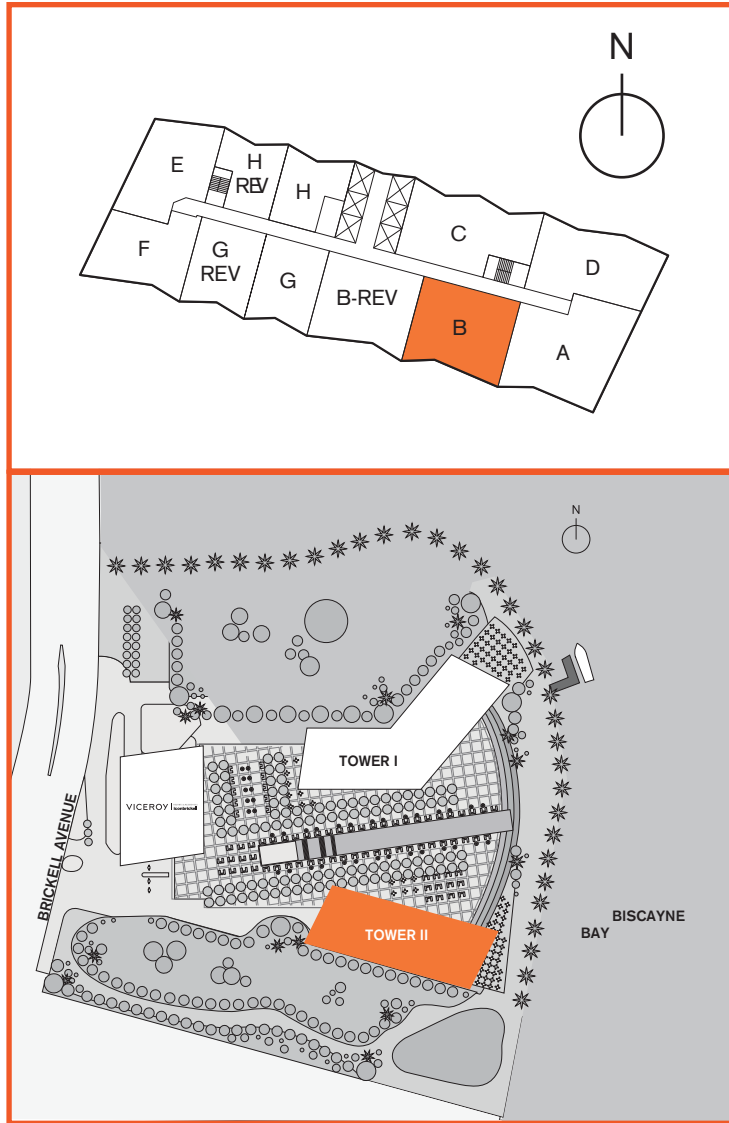


FORTUNE
Development Sales



Stated dimensions are measured to the exterior boundaries of the exterior walls and the centerline of interior demising walls and in fact vary from the dimensions that would be determined by using the description and definition of the "Unit" set forth in the Declaration (which generally only includes the interior airspace between the perimeter walls and excludes interior structural components). Additionally, measurements of rooms set forth on any floor plan are generally taken at the greatest points of each given room (as if the room were a perfect rectangle), without regard for any cutouts. Accordingly, the area of the actual room will typically be smaller than the product obtained by multiplying the stated length times width. All dimensions are approximate and all floor plans and development plans are subject to change.

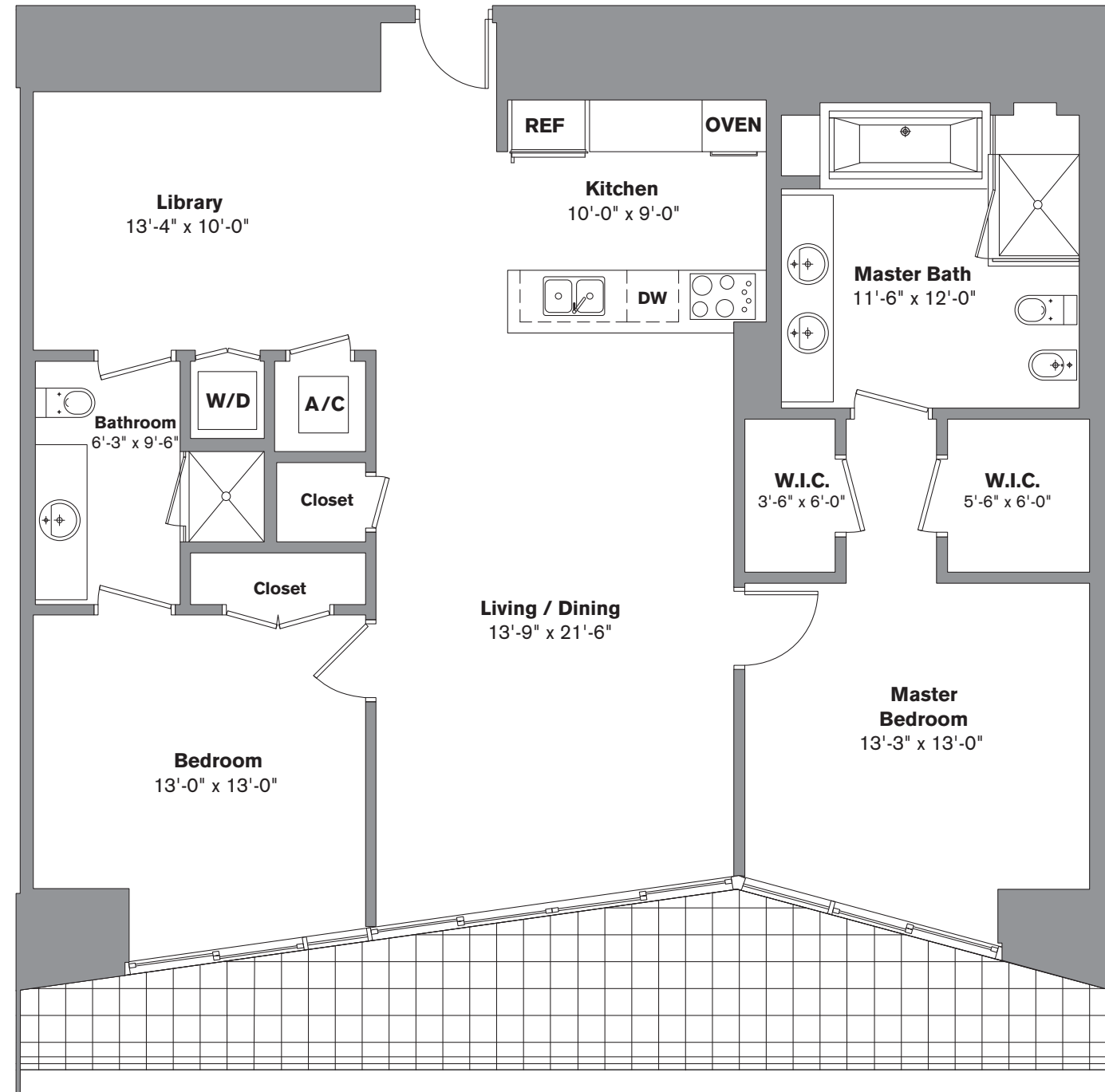
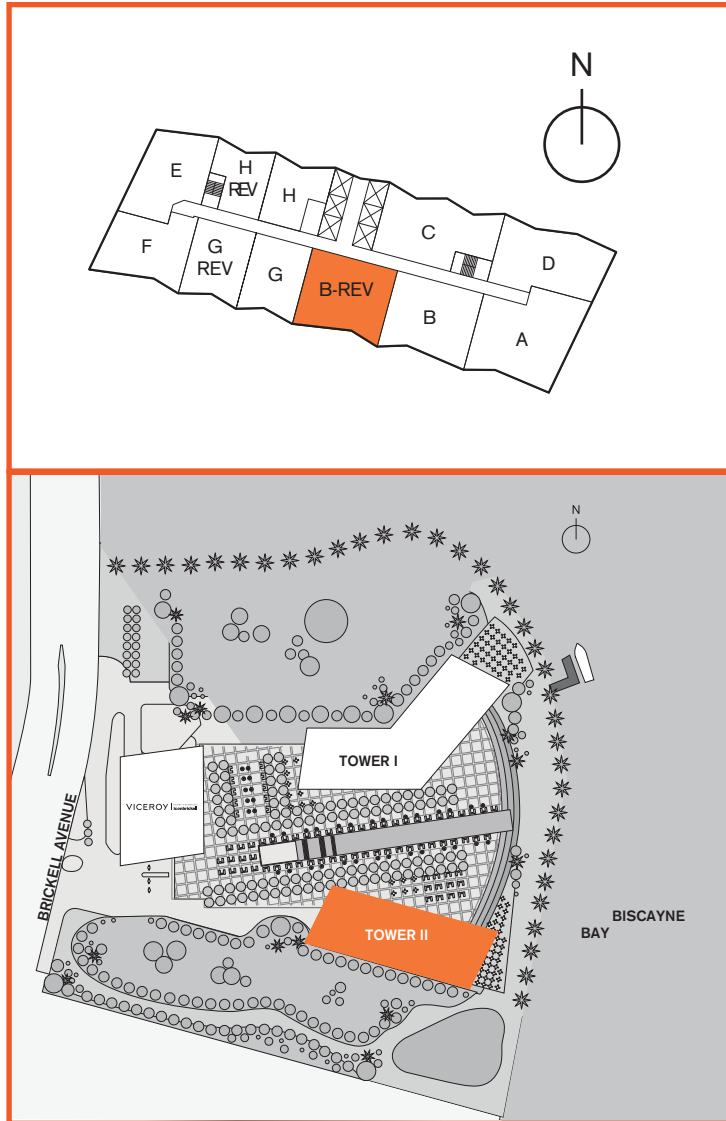
2 Bedroom / 2 Bath / Den
Area under AC: 1,518 SF / 141.02 m²
Balcony: 220 SF / 20.43 m²
Total: 1,738 SF / 161.46 m²



Stated dimensions are measured to the exterior boundaries of the exterior walls and the centerline of interior demising walls and in fact vary from the dimensions that would be determined by using the description and definition of the "Unit" set forth in the Declaration (which generally only includes the interior airspace between the perimeter walls and excludes interior structural components). Additionally, measurements of rooms set forth on any floor plan are generally taken at the greatest points of each given room (as if the room were a perfect rectangle), without regard for any cutouts. Accordingly, the area of the actual room will typically be smaller than the product obtained by multiplying the stated length times width. All dimensions are approximate and all floor plans and development plans are subject to change.



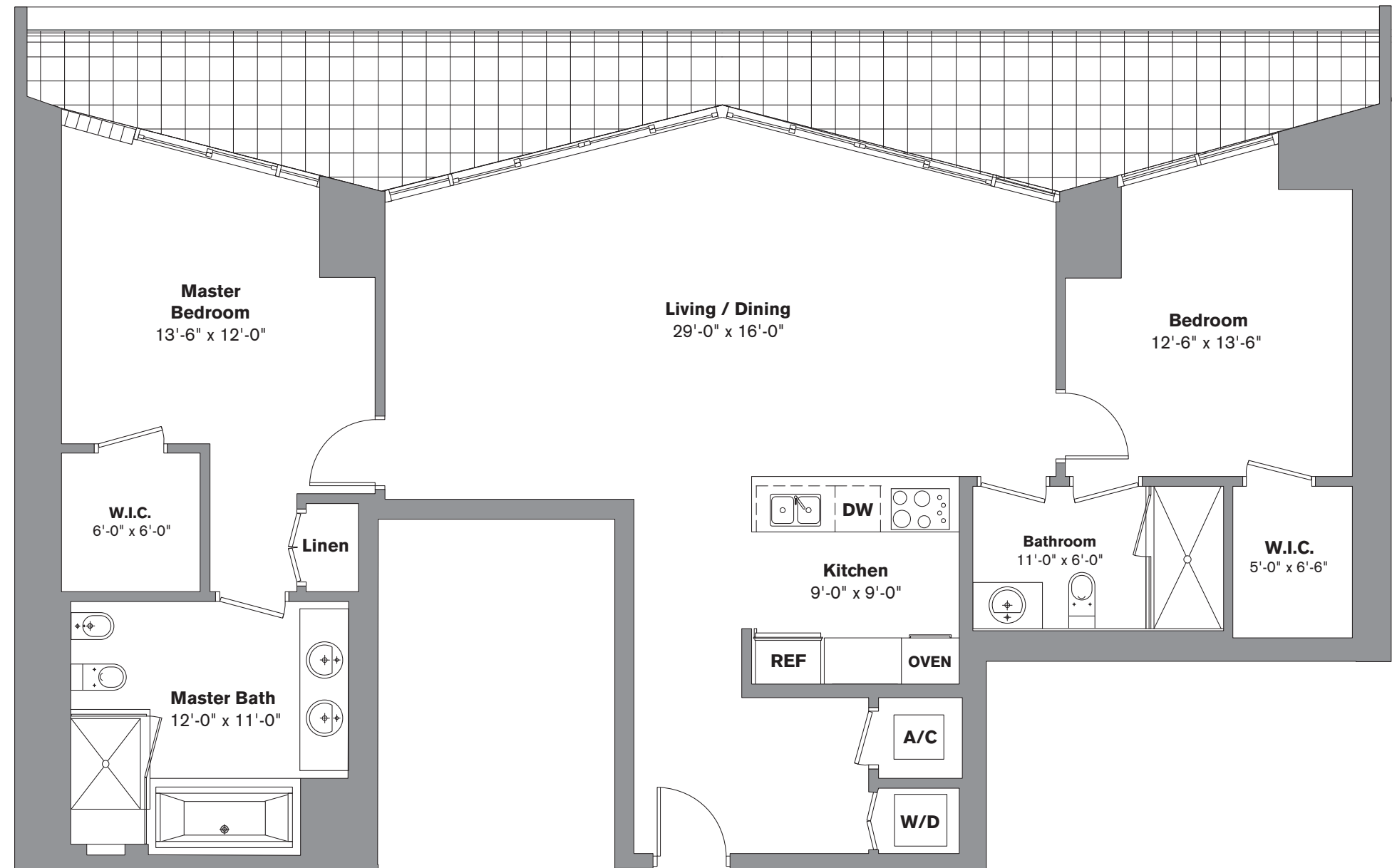
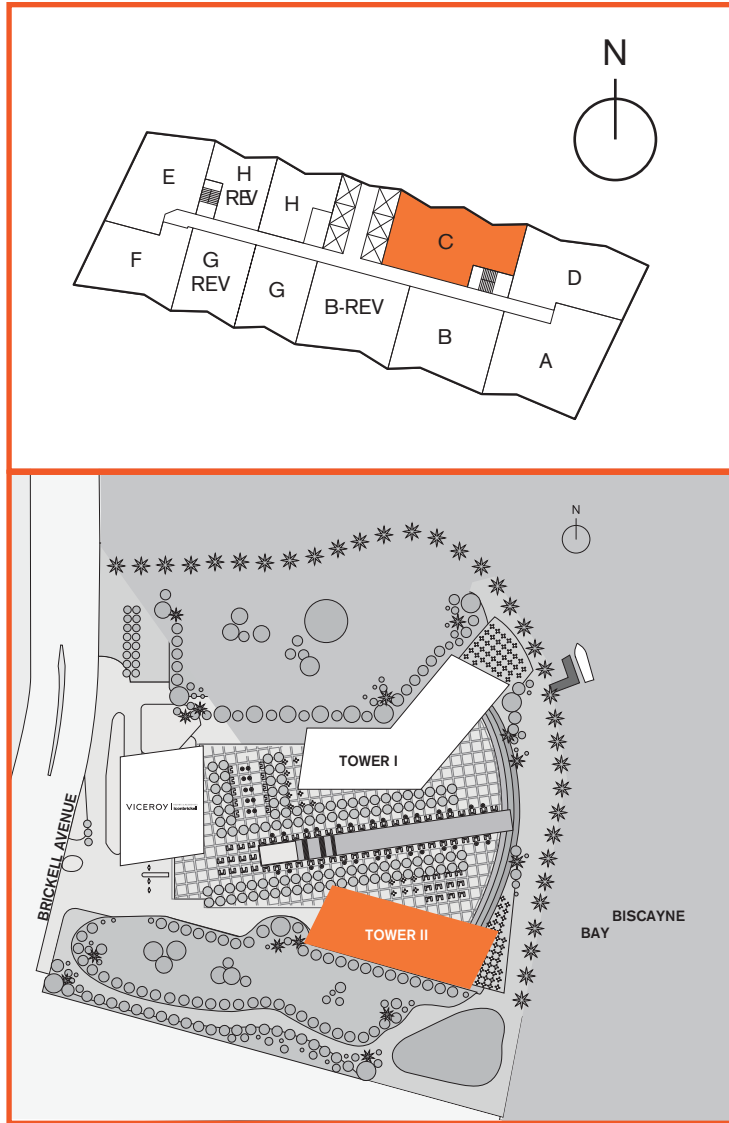
2 Bedroom / 2 Bath / Den
Area under AC: 1,450 SF / 134.70 m²
Balcony: 215 SF / 19.97 m²
Total: 1,665 SF / 154.60 m²



Stated dimensions are measured to the exterior boundaries of the exterior walls and the centerline of interior demising walls and in fact vary from the dimensions that would be determined by using the description and definition of the "Unit" set forth in the Declaration (which generally only includes the interior airspace between the perimeter walls and excludes interior structural components). Additionally, measurements of rooms set forth on any floor plan are generally taken at the greatest points of each given room (as if the room were a perfect rectangle), without regard for any cutouts. Accordingly, the area of the actual room will typically be smaller than the product obtained by multiplying the stated length times width. All dimensions are approximate and all floor plans and development plans are subject to change.



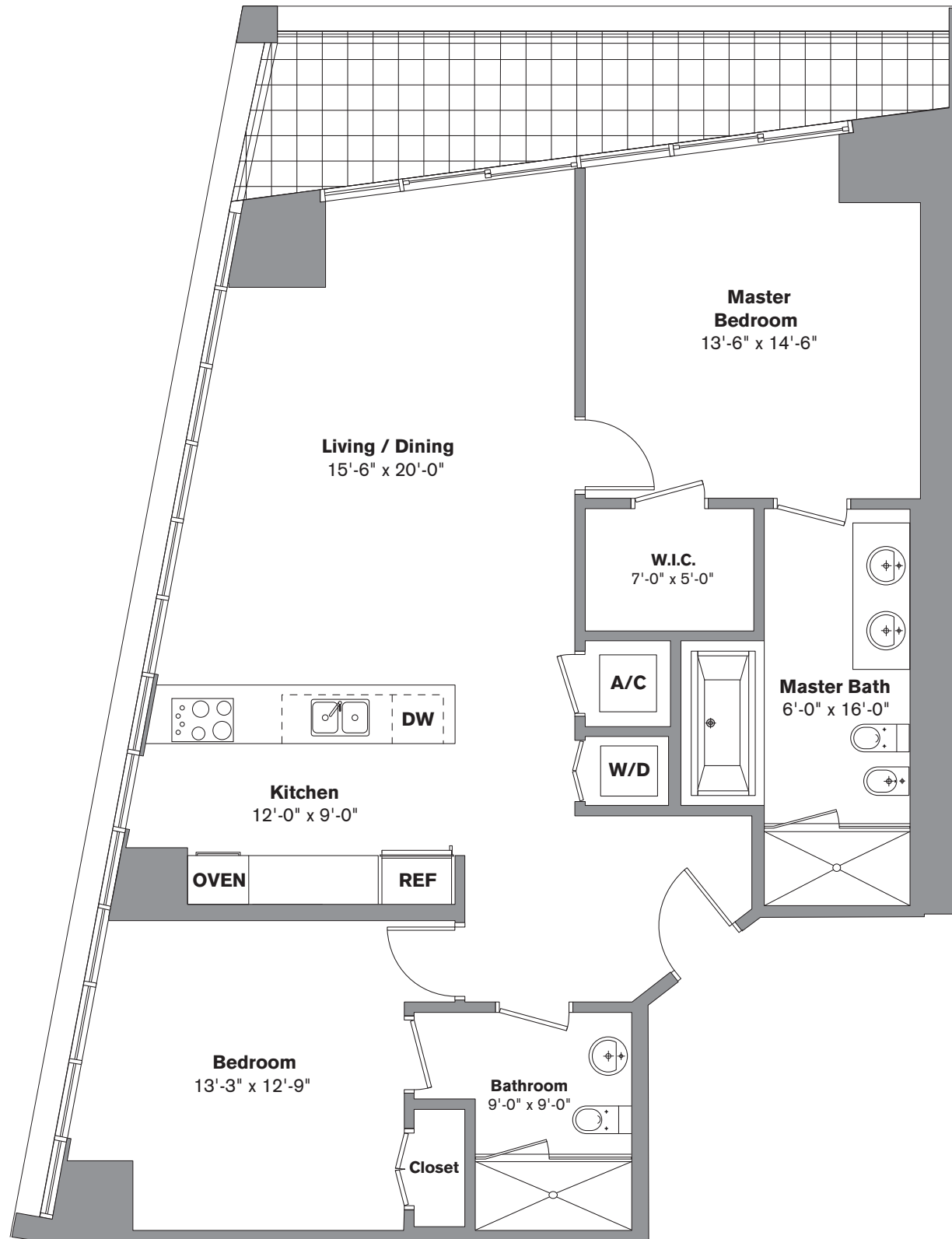
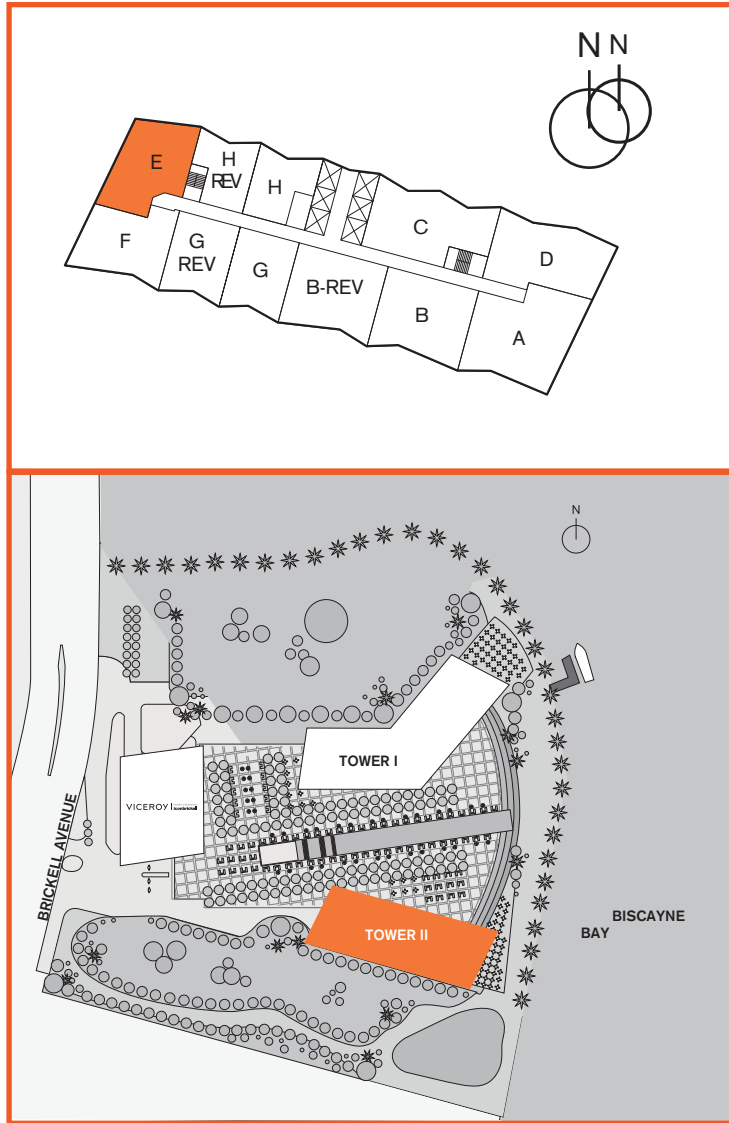
2 Bedroom / 2 Bath
Area under AC: 1,500 SF / 139.35 m²
Balcony: 300 SF / 27.87 m²
Total: 1,800 SF / 167.22 m²



Stated dimensions are measured to the exterior boundaries of the exterior walls and the centerline of interior demising walls and in fact vary from the dimensions that would be determined by using the description and definition of the "Unit" set forth in the Declaration (which generally only includes the interior airspace between the perimeter walls and excludes interior structural components). Additionally, measurements of rooms set forth on any floor plan are generally taken at the greatest points of each given room (as if the room were a perfect rectangle), without regard for any cutouts. Accordingly, the area of the actual room will typically be smaller than the product obtained by multiplying the stated length times width. All dimensions are approximate and all floor plans and development plans are subject to change.



2 Bedroom / 2 Bath
Area under AC: 1,327 SF / 123.28 m²
Balcony: 146 SF / 13.56 m²
Total: 1,473 SF / 136.84 m²

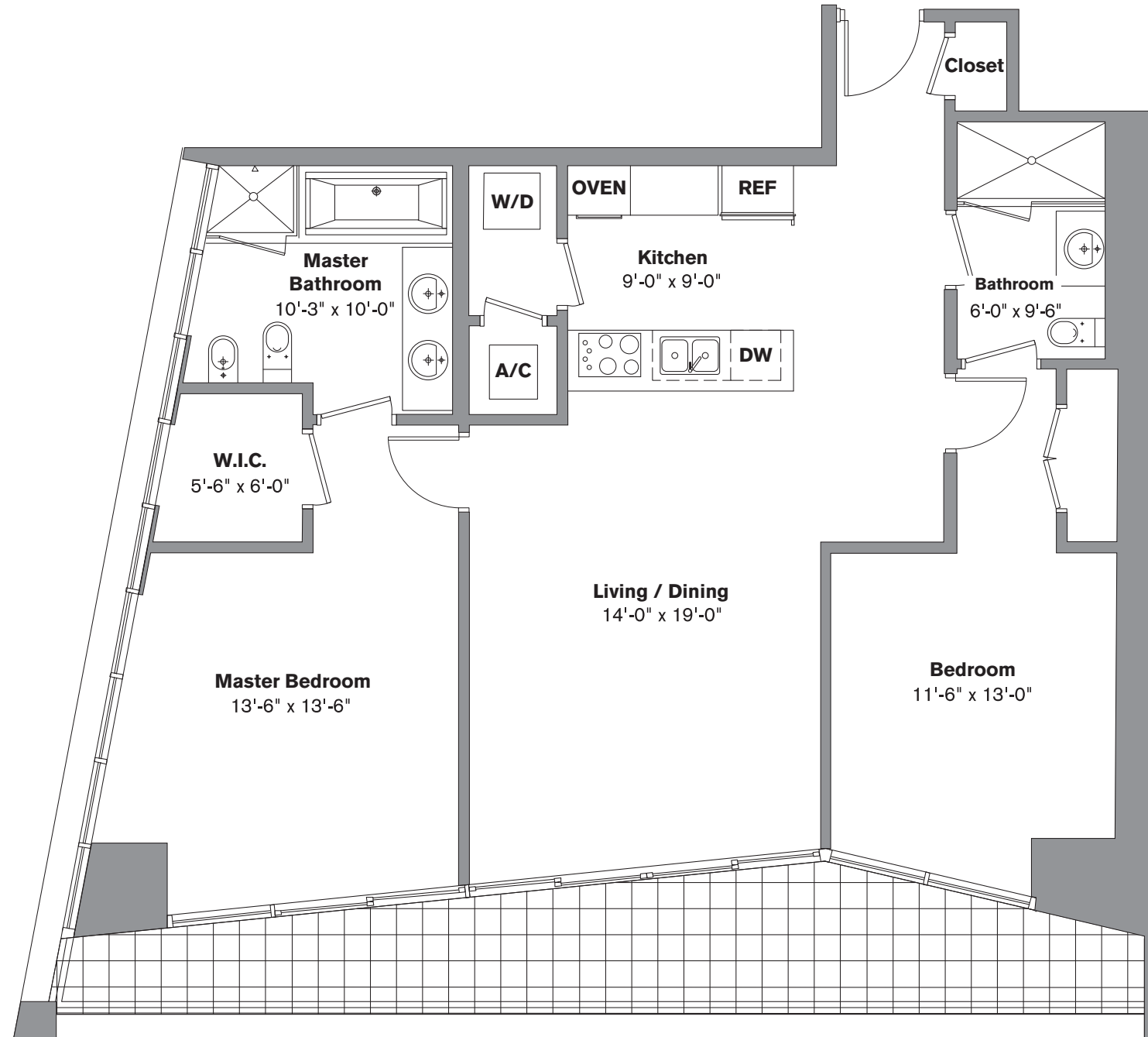
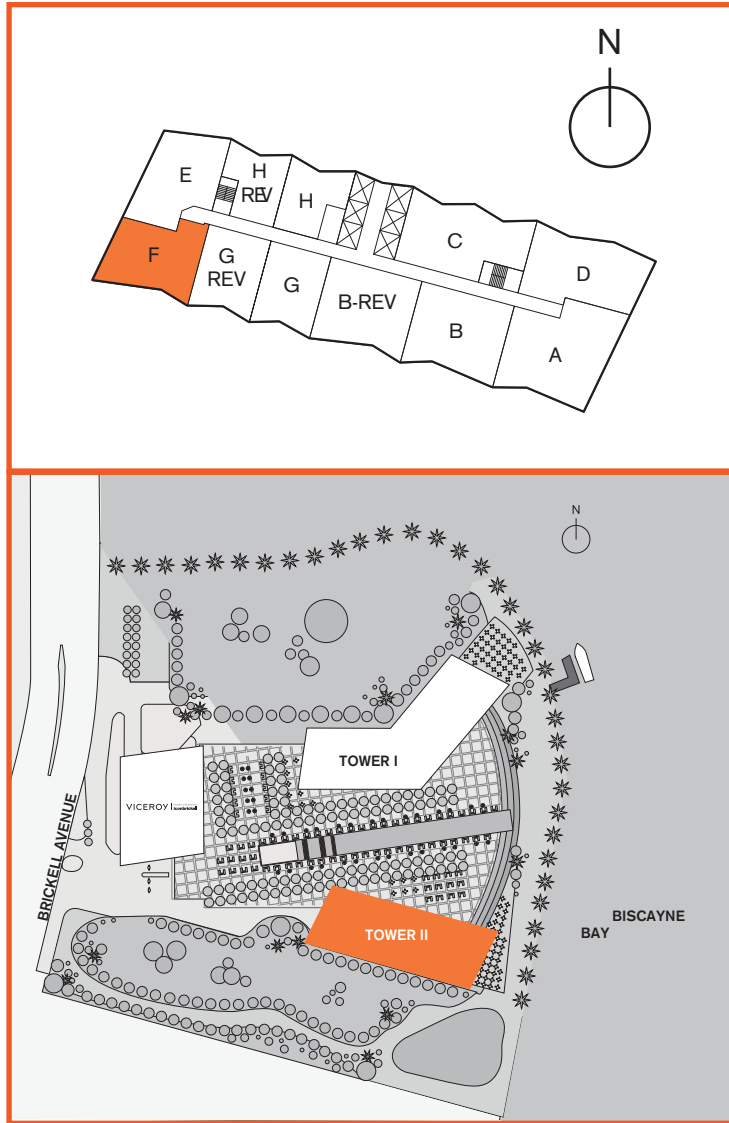


FORTUNE
Development Sales



Stated dimensions are measured to the exterior boundaries of the exterior walls and the centerline of interior demising walls and in fact vary from the dimensions that would be determined by using the description and definition of the "Unit" set forth in the Declaration (which generally only includes the interior airspace between the perimeter walls and excludes interior structural components). Additionally, measurements of rooms set forth on any floor plan are generally taken at the greatest points of each given room (as if the room were a perfect rectangle), without regard for any cutouts. Accordingly, the area of the actual room will typically be smaller than the product obtained by multiplying the stated length times width. All dimensions are approximate and all floor plans and development plans are subject to change.

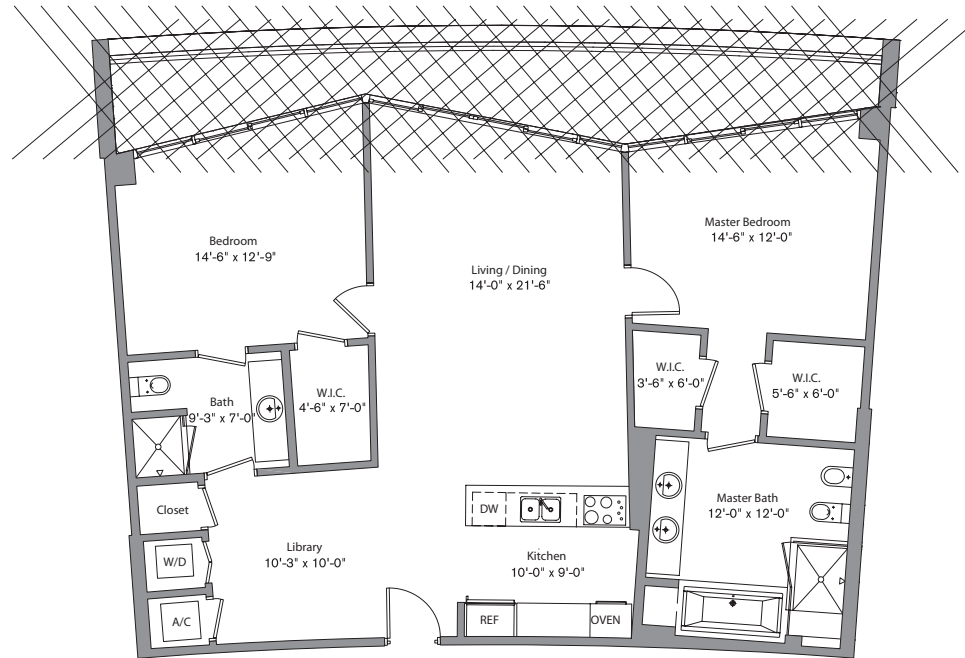
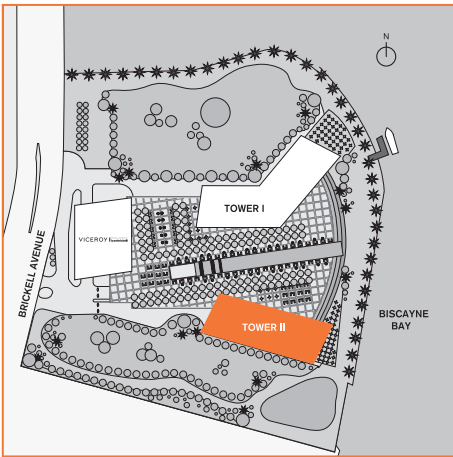
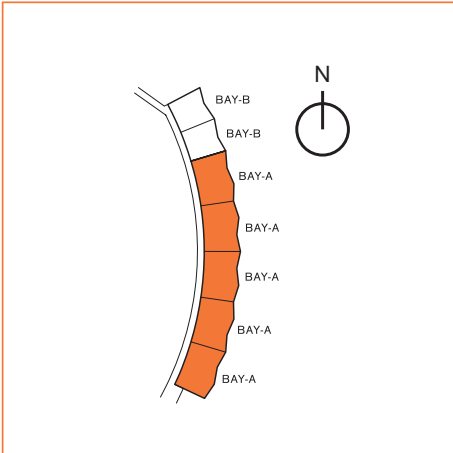
2 Bedroom / 2 Bath
Area under AC: 1,255 SF / 116.59 m²
Balcony: 200 SF / 18.58 m²
Total: 1,455 SF / 135.17 m²



Stated dimensions are measured to the exterior boundaries of the exterior walls and the centerline of interior demising walls and in fact vary from the dimensions that would be determined by using the description and definition of the "Unit" set forth in the Declaration (which generally only includes the interior airspace between the perimeter walls and excludes interior structural components). Additionally, measurements of rooms set forth on any floor plan are generally taken at the greatest points of each given room (as if the room were a perfect rectangle), without regard for any cutouts. Accordingly, the area of the actual room will typically be smaller than the product obtained by multiplying the stated length times width. All dimensions are approximate and all floor plans and development plans are subject to change.



2 Bedroom / 2 Bath / Library
 Area under AC: 1,390 SF / 129.13 m²
 Balcony: 207 SF / 19.23 m²
 Total: 1,597 SF / 148.36 m²

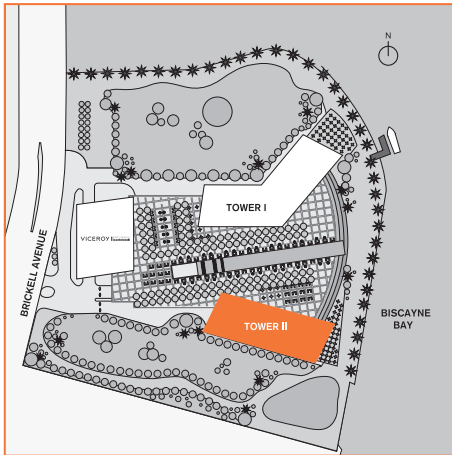
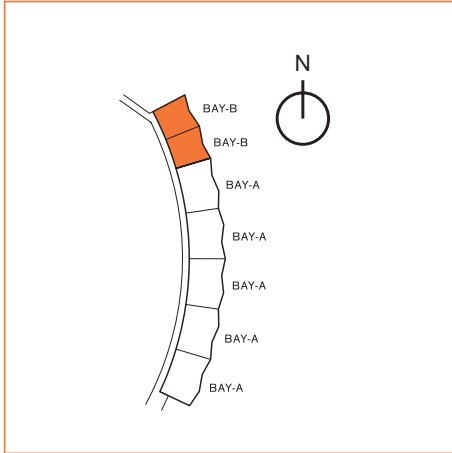


FORTUNE
Development Sales

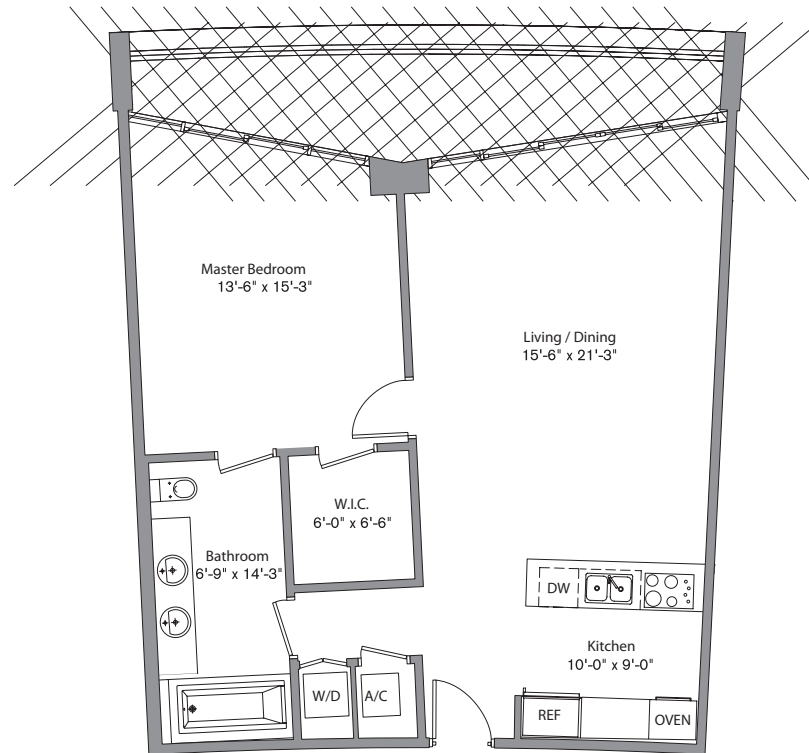


EQUAL HOUSING OPPORTUNITY

Stated dimensions are measured to the exterior boundaries of the exterior walls and the centerline of interior demising walls and in fact vary from the dimensions that would be determined by using the description and definition of the "Unit" set forth in the Declaration (which generally only includes the interior airspace between the perimeter walls and excludes interior structural components). Additionally, measurements of rooms set forth on any floor plan are generally taken at the greatest points of each given room (as if the room were a perfect rectangle), without regard for any cutouts. Accordingly, the area of the actual room will typically be smaller than the product obtained by multiplying the stated length times width. All dimensions are approximate and all floor plans and development plans are subject to change.



1 Bedroom / 1 Bath
 Area under AC: 927 SF / 86.12 m²
 Balcony: 138 SF / 12.82 m²
 Total: 1,065 SF / 98.94 m²



FORTUNE
Development Sales



Stated dimensions are measured to the exterior boundaries of the exterior walls and the centerline of interior demising walls and in fact vary from the dimensions that would be determined by using the description and definition of the "Unit" set forth in the Declaration (which generally only includes the interior airspace between the perimeter walls and excludes interior structural components). Additionally, measurements of rooms set forth on any floor plan are generally taken at the greatest points of each given room (as if the room were a perfect rectangle), without regard for any cutouts. Accordingly, the area of the actual room will typically be smaller than the product obtained by multiplying the stated length times width. All dimensions are approximate and all floor plans and development plans are subject to change.