

# TOWER UNITS

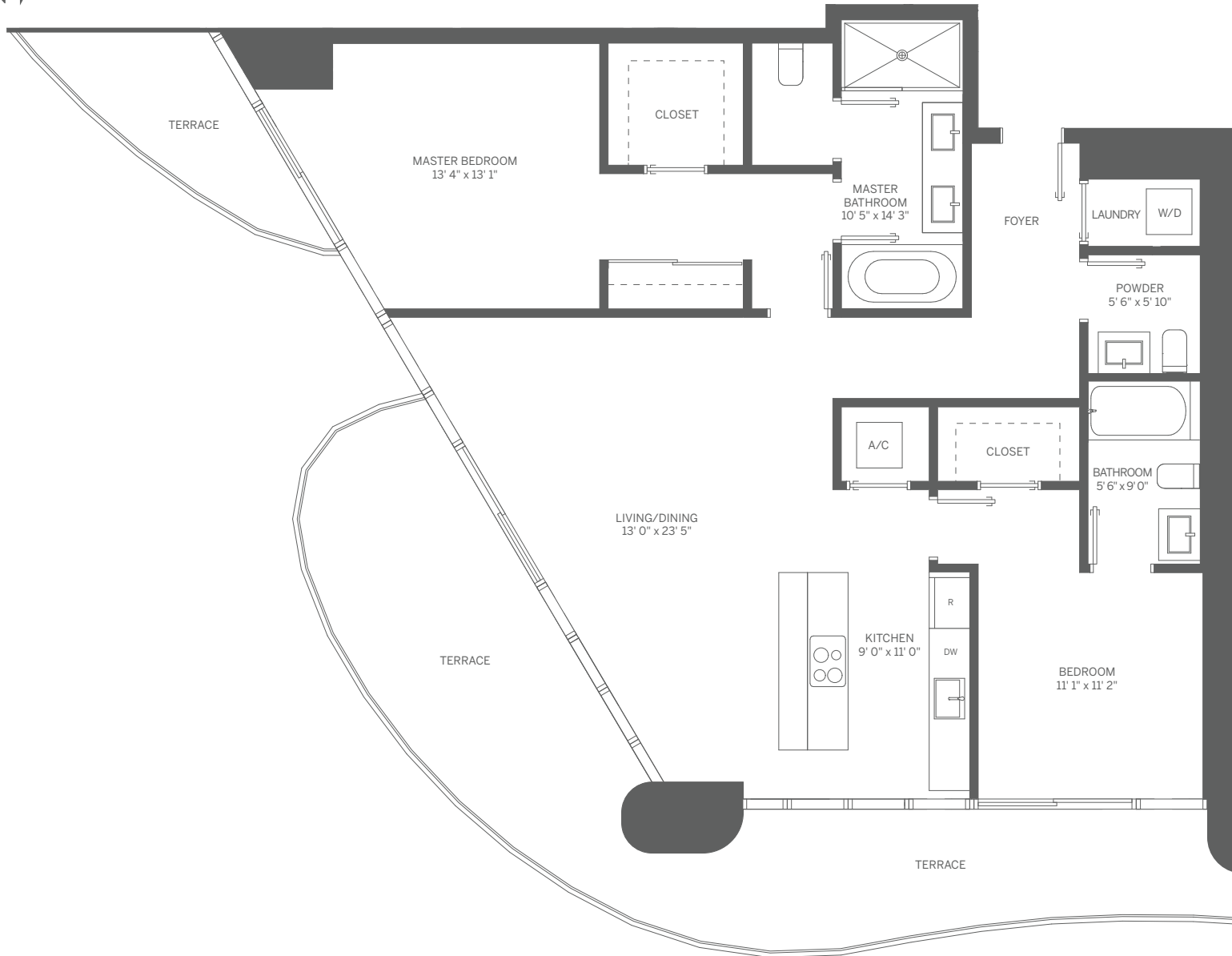
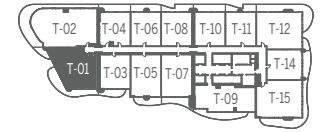
## KEY PLAN

LEVELS 19-49



BRICKELL FLATIRON

Stated dimensions are measured to the exterior boundaries of the exterior walls and the centerline of interior demising walls and in fact vary from the dimensions that would be determined by using the description and definition of the "Unit" set forth in the Declaration (which generally only includes the interior airspace between the perimeter walls and excludes interior structural components). Note that measurements of rooms set forth on this floor plan are generally taken at the greatest points of each given room (as if the room were a perfect rectangle), without regard for any cutouts. Accordingly, the area of the actual room will typically be smaller than the product obtained by multiplying the stated length times width. All dimensions are approximate and may vary with actual construction, and all floor plans and development plans are subject to change.

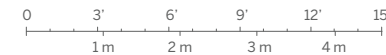


## TOWER UNIT 01 2 BEDROOM / 2.5 BATH

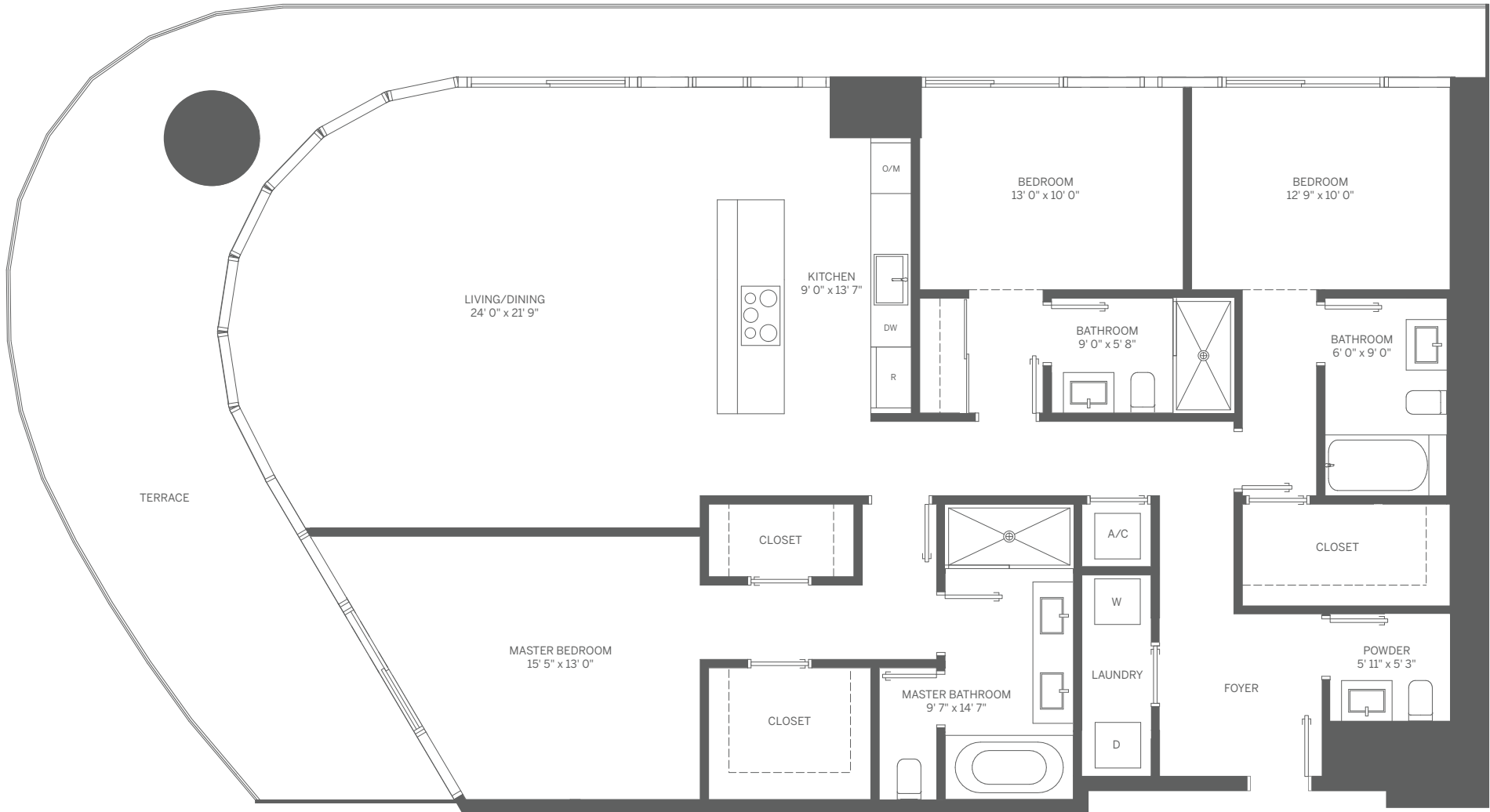
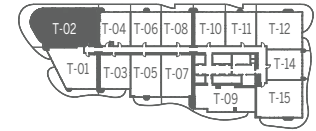
INTERIOR: 1,401 SF / 130 m<sup>2</sup>

TERRACE: 474 SF / 44 m<sup>2</sup>

TOTAL: 1,875 SF / 174 m<sup>2</sup>



Stated dimensions are measured to the exterior boundaries of the exterior walls and the centerline of interior demising walls and in fact vary from the dimensions that would be determined by using the description and definition of the "Unit" set forth in the Declaration (which generally only includes the interior airspace between the perimeter walls and excludes interior structural components). For your reference, the area of the Unit, determined in accordance with those defined unit boundaries, is 1,301 SF. Note that measurements of rooms set forth on this floor plan are generally taken at the greatest points of each given room (as if the room were a perfect rectangle), without regard for any cutouts. Accordingly, the area of the actual room will typically be smaller than the product obtained by multiplying the stated length times width. All dimensions are approximate and may vary with actual construction, and all floor plans and development plans are subject to change.

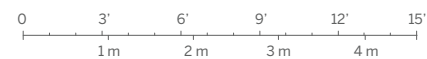


## TOWER UNIT 02 3 BEDROOM / 3.5 BATH

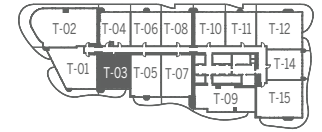
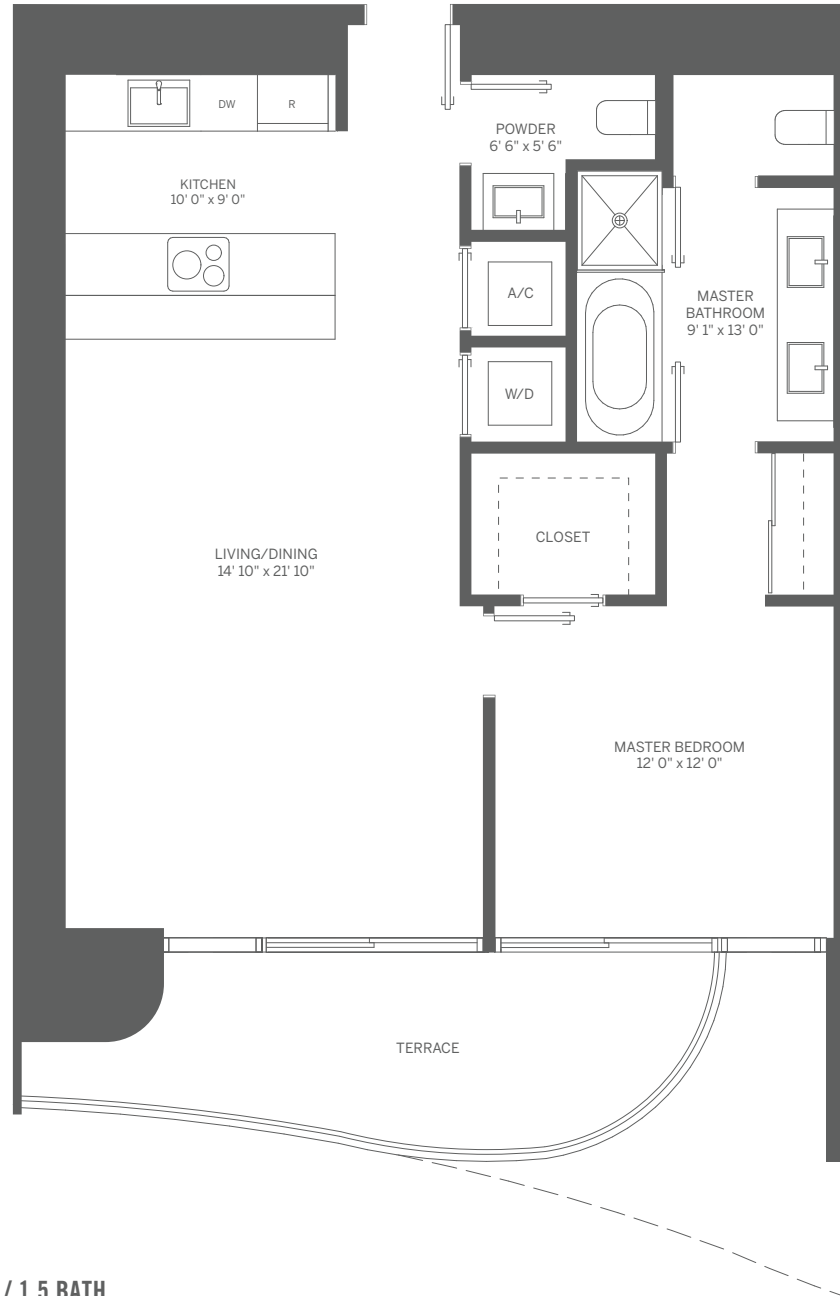
INTERIOR: 2,025 SF / 188 m<sup>2</sup>

TERRACE: 628 SF / 58 m<sup>2</sup>

TOTAL: 2,653 SF / 246 m<sup>2</sup>



Stated dimensions are measured to the exterior boundaries of the exterior walls and the centerline of interior demising walls and in fact vary from the dimensions that would be determined by using the description and definition of the "Unit" set forth in the Declaration (which generally only includes the interior airspace between the perimeter walls and excludes interior structural components). For your reference, the area of the Unit, determined in accordance with those defined unit boundaries, is 1,922 SF. Note that measurements of rooms set forth on this floor plan are generally taken at the greatest points of each given room (as if the room were a perfect rectangle), without regard for any cutouts. Accordingly, the area of the actual room will typically be smaller than the product obtained by multiplying the stated length times width. All dimensions are approximate and may vary with actual construction, and all floor plans and development plans are subject to change.



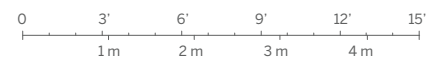
Note: Terrace: 140 SF / 13 m<sup>2</sup> on Odd Floors  
 Terrace: 211 SF / 20 m<sup>2</sup> on Even Floors

## TOWER UNIT 03 1 BEDROOM / 1.5 BATH

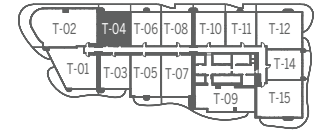
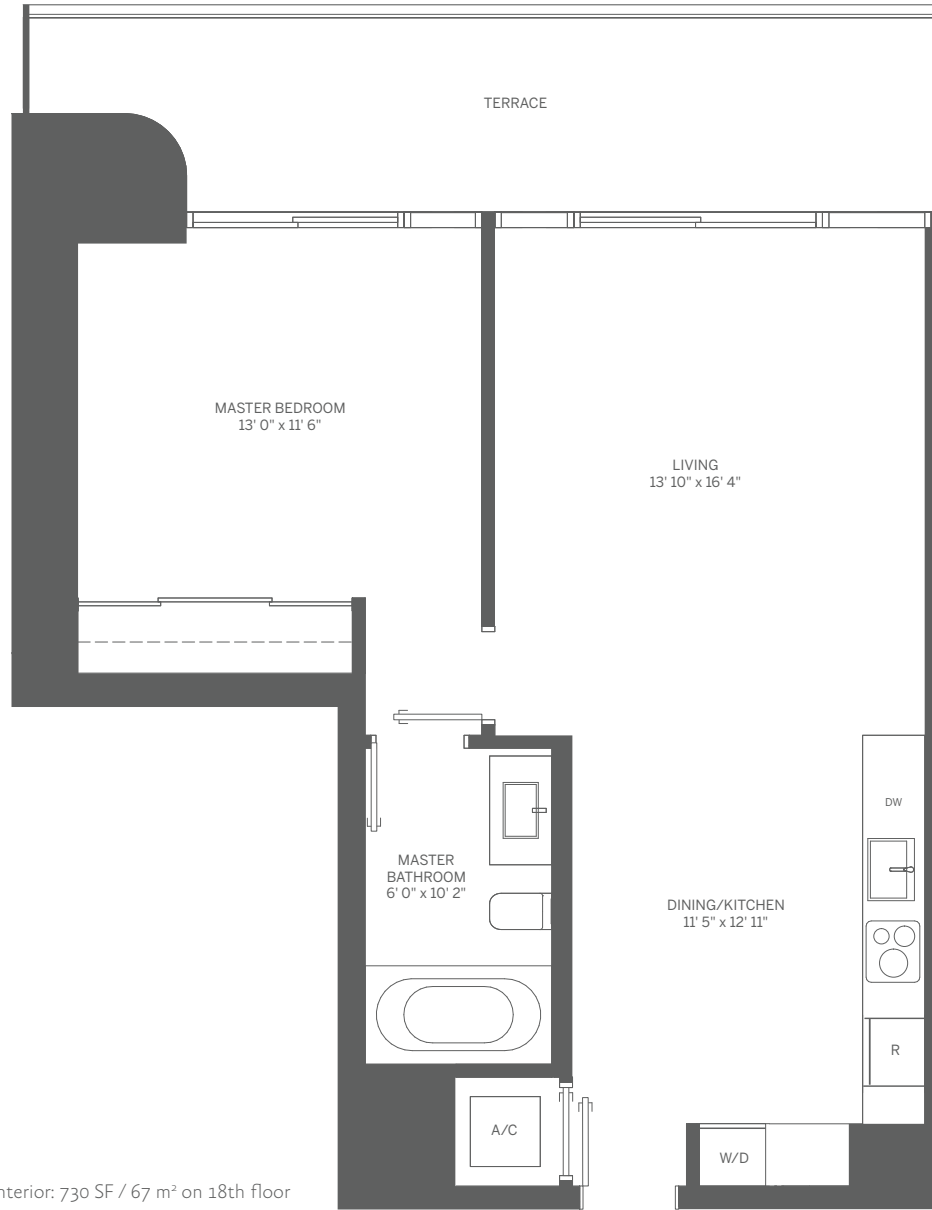
INTERIOR: 901 SF / 84 m<sup>2</sup>

TERRACE: 140 SF / 13 m<sup>2</sup>

TOTAL: 1,041 SF / 97 m<sup>2</sup>



Stated dimensions are measured to the exterior boundaries of the exterior walls and the centerline of interior demising walls and in fact vary from the dimensions that would be determined by using the description and definition of the "Unit" set forth in the Declaration (which generally only includes the interior airspace between the perimeter walls and excludes interior structural components). For your reference, the area of the Unit, determined in accordance with those defined unit boundaries, is 838 SF. Note that measurements of rooms set forth on this floor plan are generally taken at the greatest points of each given room (as if the room were a perfect rectangle), without regard for any cutouts. Accordingly, the area of the actual room will typically be smaller than the product obtained by multiplying the stated length times width. All dimensions are approximate and may vary with actual construction, and all floor plans and development plans are subject to change.



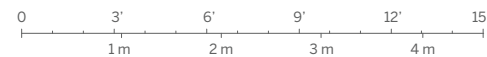
Note: Interior: 730 SF / 67 m<sup>2</sup> on 18th floor

## TOWER UNIT 04 1 BEDROOM / 1 BATH

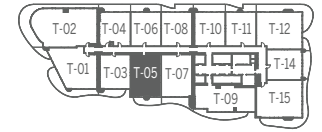
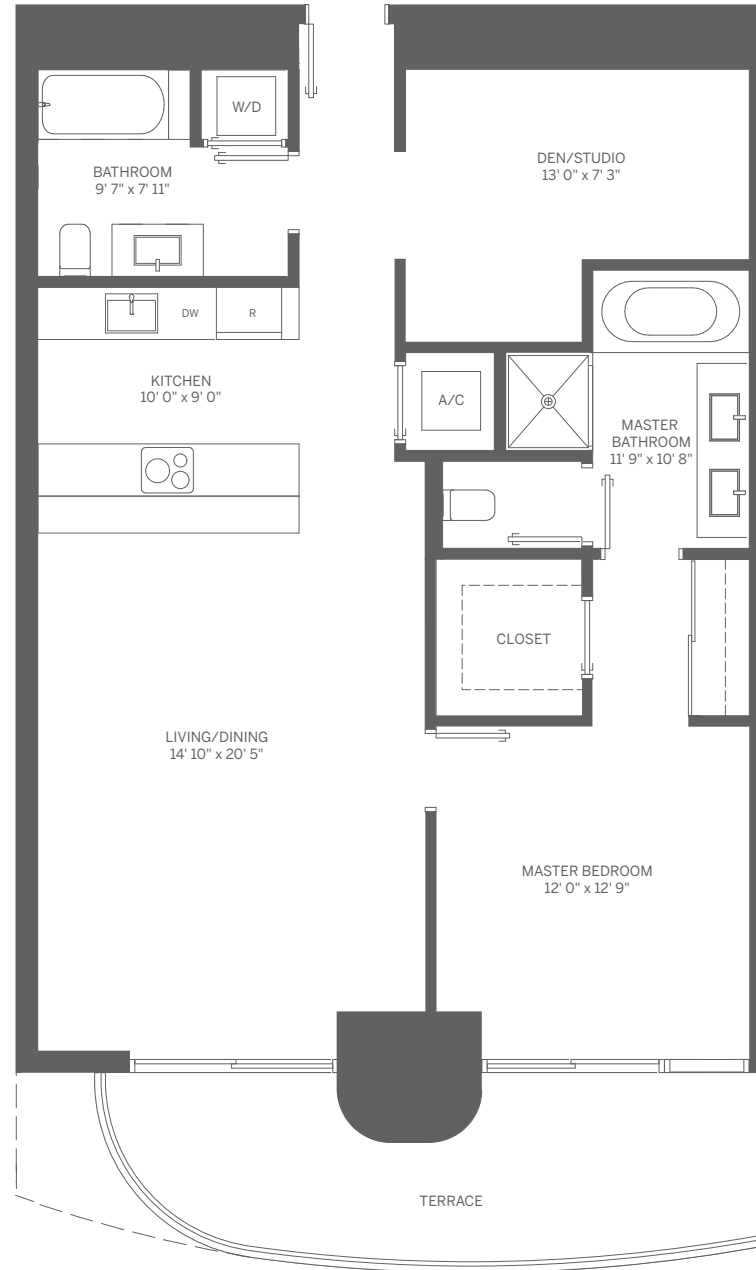
INTERIOR: 737 SF / 68 m<sup>2</sup>

TERRACE: 178 SF / 17 m<sup>2</sup>

TOTAL: 915 SF / 84 m<sup>2</sup>



Stated dimensions are measured to the exterior boundaries of the exterior walls and the centerline of interior demising walls and in fact vary from the dimensions that would be determined by using the description and definition of the "Unit" set forth in the Declaration (which generally only includes the interior airspace between the perimeter walls and excludes interior structural components). For your reference, the area of the Unit, determined in accordance with those defined unit boundaries, is 672 SF. Note that measurements of rooms set forth on this floor plan are generally taken at the greatest points of each given room (as if the room were a perfect rectangle), without regard for any cutouts. Accordingly, the area of the actual room will typically be smaller than the product obtained by multiplying the stated length times width. All dimensions are approximate and may vary with actual construction, and all floor plans and development plans are subject to change.



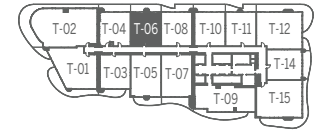
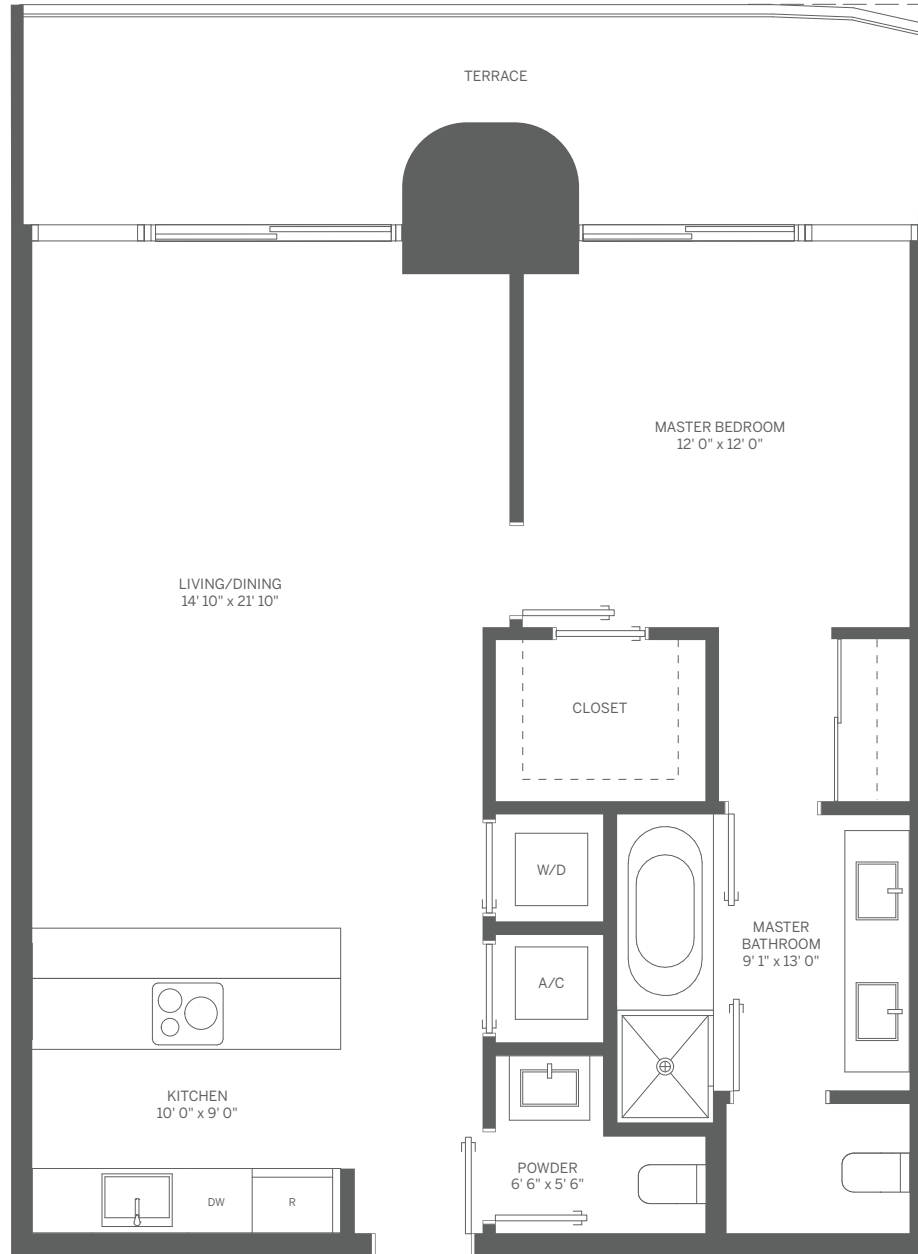
Note: Terrace: 163 SF / 15 m<sup>2</sup> on Odd Floors  
 Terrace: 184 SF / 17 m<sup>2</sup> on Even Floors

## TOWER UNIT 05 1 BEDROOM + DEN / 2 BATH

INTERIOR: 1,107 SF / 103 m<sup>2</sup>    TERRACE: 163 SF / 15 m<sup>2</sup>    TOTAL: 1,270 SF / 118 m<sup>2</sup>



Stated dimensions are measured to the exterior boundaries of the exterior walls and the centerline of interior demising walls and in fact vary from the dimensions that would be determined by using the description and definition of the "Unit" set forth in the Declaration (which generally only includes the interior airspace between the perimeter walls and excludes interior structural components). For your reference, the area of the Unit, determined in accordance with those defined unit boundaries, is 1,026 SF. Note that measurements of rooms set forth on this floor plan are generally taken at the greatest points of each given room (as if the room were a perfect rectangle), without regard for any cutouts. Accordingly, the area of the actual room will typically be smaller than the product obtained by multiplying the stated length times width. All dimensions are approximate and may vary with actual construction, and all floor plans and development plans are subject to change.

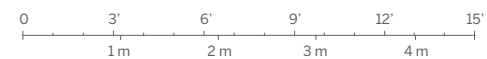


## TOWER UNIT 06 1 BEDROOM / 1.5 BATH

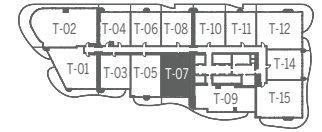
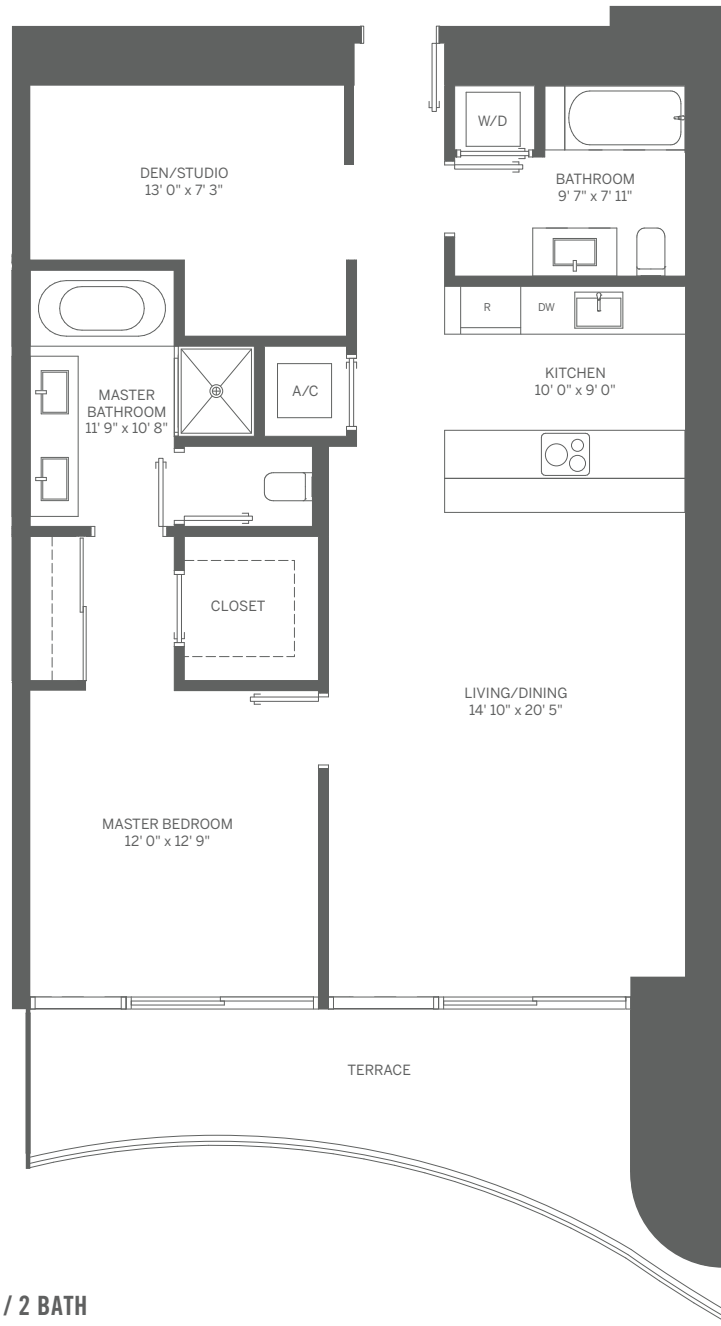
INTERIOR: 898 SF / 83 m<sup>2</sup>

TERRACE: 168 SF / 16 m<sup>2</sup>

TOTAL: 1,066 SF / 99 m<sup>2</sup>



Stated dimensions are measured to the exterior boundaries of the exterior walls and the centerline of interior demising walls and in fact vary from the dimensions that would be determined by using the description and definition of the "Unit" set forth in the Declaration (which generally only includes the interior airspace between the perimeter walls and excludes interior structural components). For your reference, the area of the Unit, determined in accordance with those defined unit boundaries, is 829 SF. Note that measurements of rooms set forth on this floor plan are generally taken at the greatest points of each given room (as if the room were a perfect rectangle), without regard for any cutouts. Accordingly, the area of the actual room will typically be smaller than the product obtained by multiplying the stated length times width. All dimensions are approximate and may vary with actual construction, and all floor plans and development plans are subject to change.



## TOWER UNIT 07 1 BEDROOM + DEN / 2 BATH

INTERIOR: 1,107 SF / 103 m<sup>2</sup>    TERRACE: 171 SF / 16 m<sup>2</sup>    TOTAL: 1,278 SF / 119 m<sup>2</sup>

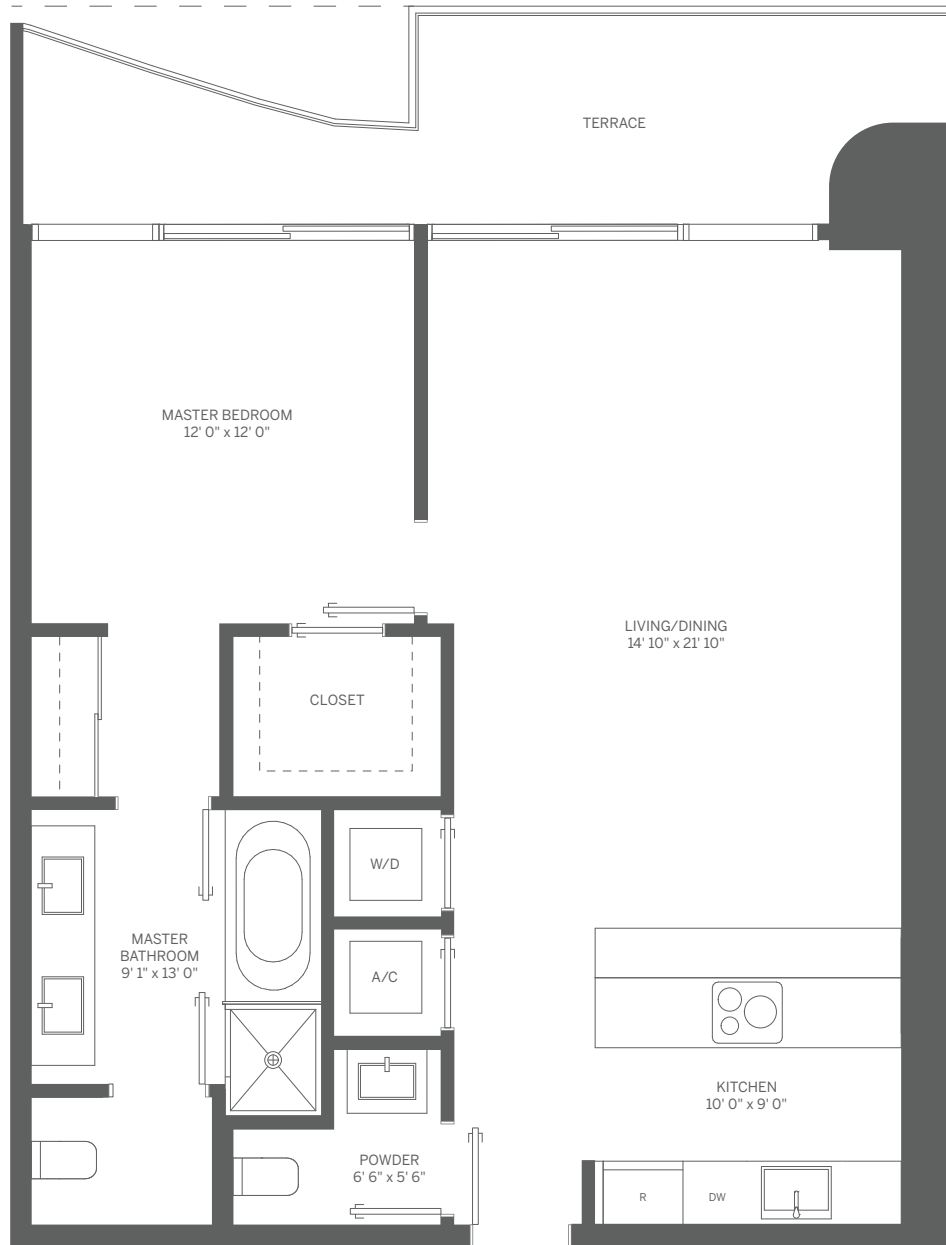


Stated dimensions are measured to the exterior boundaries of the exterior walls and the centerline of interior demising walls and in fact vary from the dimensions that would be determined by using the description and definition of the "Unit" set forth in the Declaration (which generally only includes the interior airspace between the perimeter walls and excludes interior structural components). For your reference, the area of the Unit, determined in accordance with those defined unit boundaries, is 1,037 SF. Note that measurements of rooms set forth on this floor plan are generally taken at the greatest points of each given room (as if the room were a perfect rectangle), without regard for any cutouts. Accordingly, the area of the actual room will typically be smaller than the product obtained by multiplying the stated length times width. All dimensions are approximate and may vary with actual construction, and all floor plans and development plans are subject to change.





Note: Terrace: 183 SF / 17 m<sup>2</sup> on Odd Floors  
Terrace: 153 SF / 14 m<sup>2</sup> on Even Floors

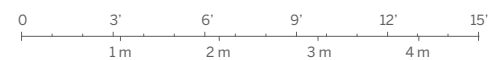


## TOWER UNIT 08 1 BEDROOM / 1.5 BATH

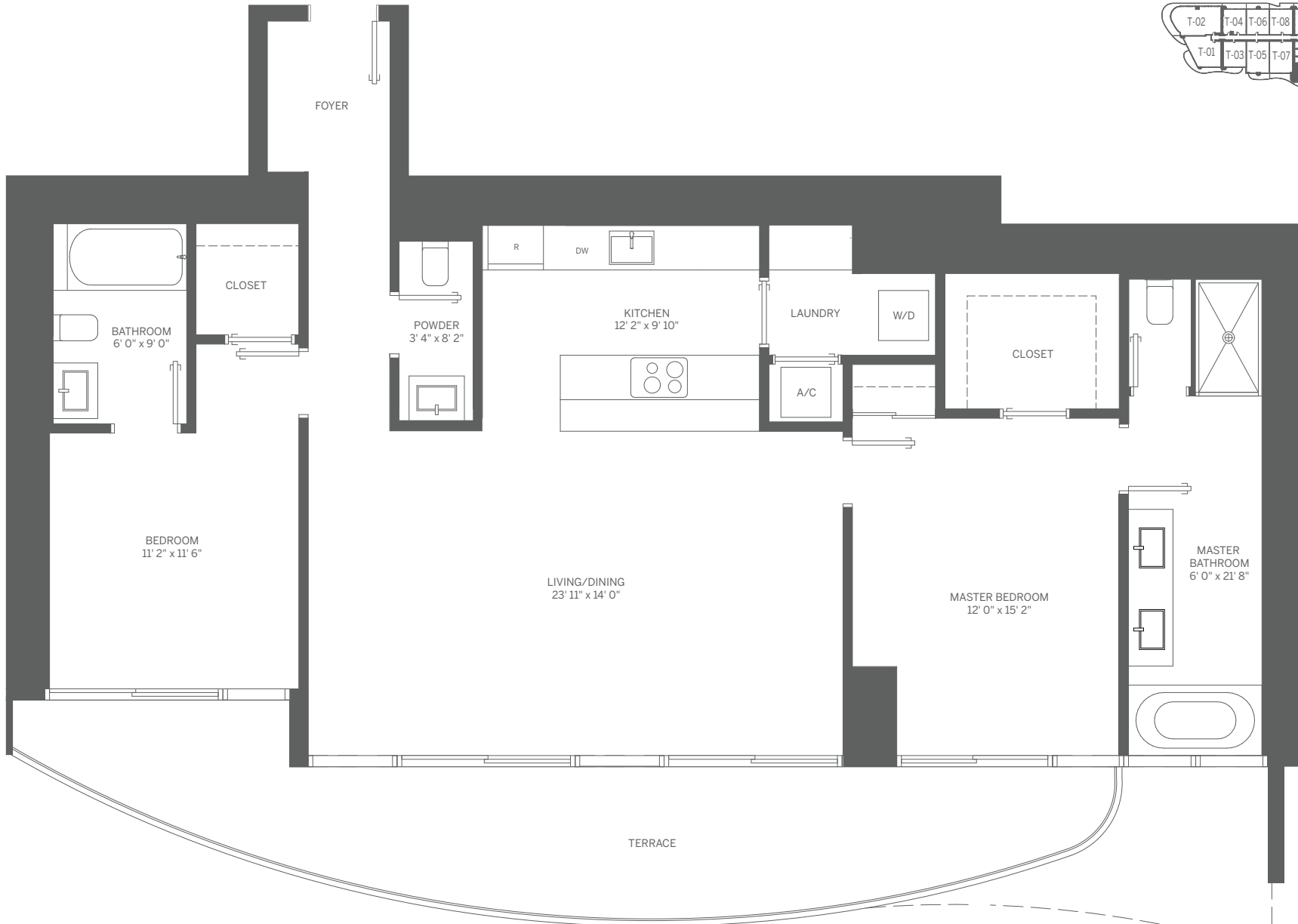
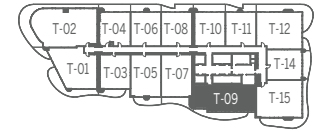
INTERIOR: 906 SF / 84 m<sup>2</sup>

TERRACE: 153 SF / 14 m<sup>2</sup>

TOTAL: 1,059 SF / 98 m<sup>2</sup>



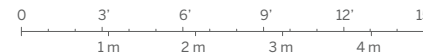
Stated dimensions are measured to the exterior boundaries of the exterior walls and the centerline of interior demising walls and in fact vary from the dimensions that would be determined by using the description and definition of the "Unit" set forth in the Declaration (which generally only includes the interior airspace between the perimeter walls and excludes interior structural components). For your reference, the area of the Unit, determined in accordance with those defined unit boundaries, is 839 SF. Note that measurements of rooms set forth on this floor plan are generally taken at the greatest points of each given room (as if the room were a perfect rectangle), without regard for any cutouts. Accordingly, the area of the actual room will typically be smaller than the product obtained by multiplying the stated length times width. All dimensions are approximate and may vary with actual construction, and all floor plans and development plans are subject to change.



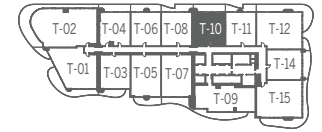
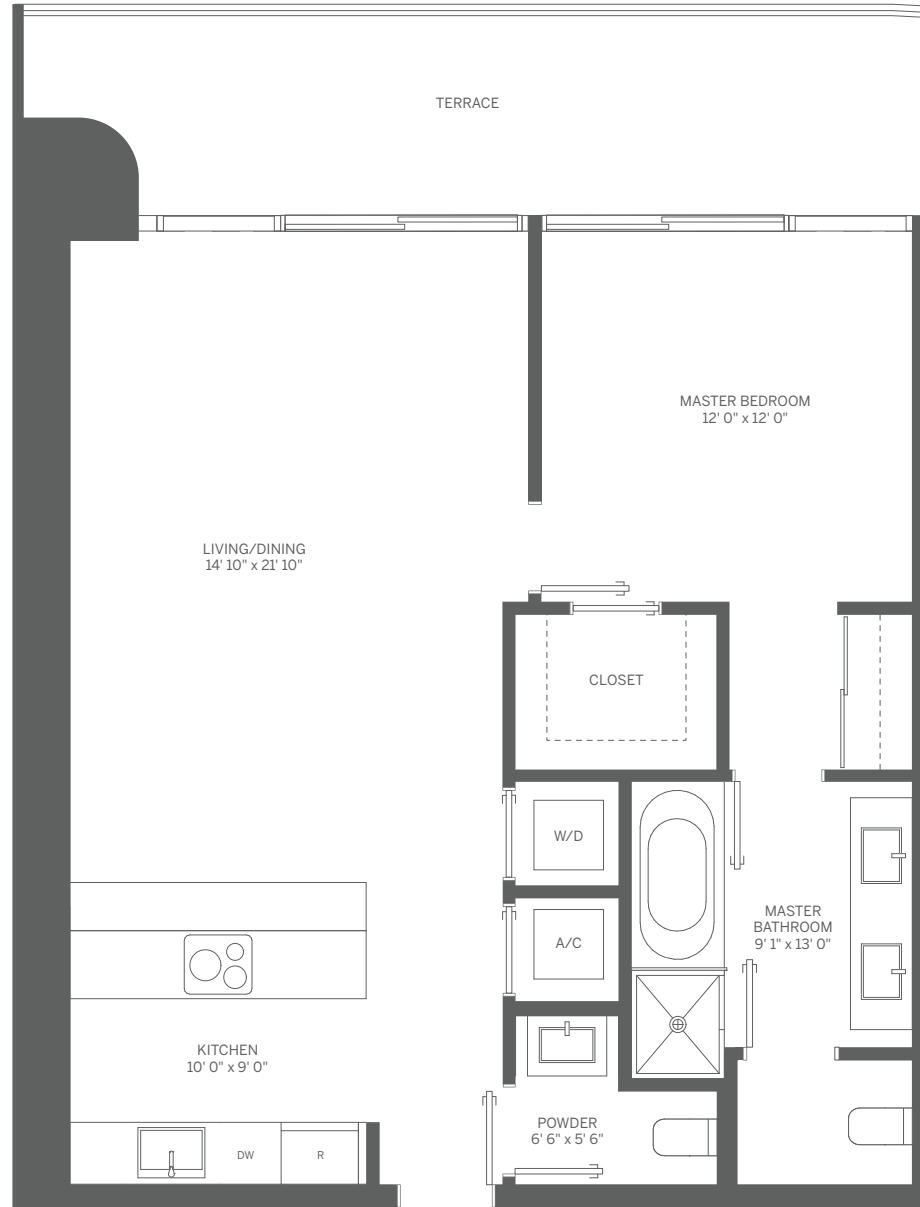
# TOWER UNIT 09 2 BEDROOM / 2.5 BATH

INTERIOR: 1,369 SF / 127 m<sup>2</sup>    TERRACE: 288 SF / 27 m<sup>2</sup>    TOTAL: 1,657 SF / 154 m<sup>2</sup>

Note: Terrace: 355 SF / 33 m<sup>2</sup> on Odd Floors  
Terrace: 288 SF / 27 m<sup>2</sup> on Even Floors



Stated dimensions are measured to the exterior boundaries of the exterior walls and the centerline of interior demising walls and in fact vary from the dimensions that would be determined by using the description and definition of the "Unit" set forth in the Declaration (which generally only includes the interior airspace between the perimeter walls and excludes interior structural components). For your reference, the area of the Unit, determined in accordance with those defined unit boundaries, is 1,253 SF. Note that measurements of rooms set forth on this floor plan are generally taken at the greatest points of each given room (as if the room were a perfect rectangle), without regard for any cutouts. Accordingly, the area of the actual room will typically be smaller than the product obtained by multiplying the stated length times width. All dimensions are approximate and may vary with actual construction, and all floor plans and development plans are subject to change.

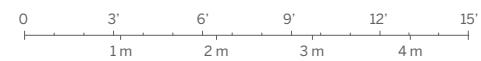


## TOWER UNIT 10 1 BEDROOM / 1.5 BATH

INTERIOR: 906 SF / 84 m<sup>2</sup>

TERRACE: 182 SF / 17 m<sup>2</sup>

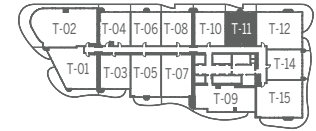
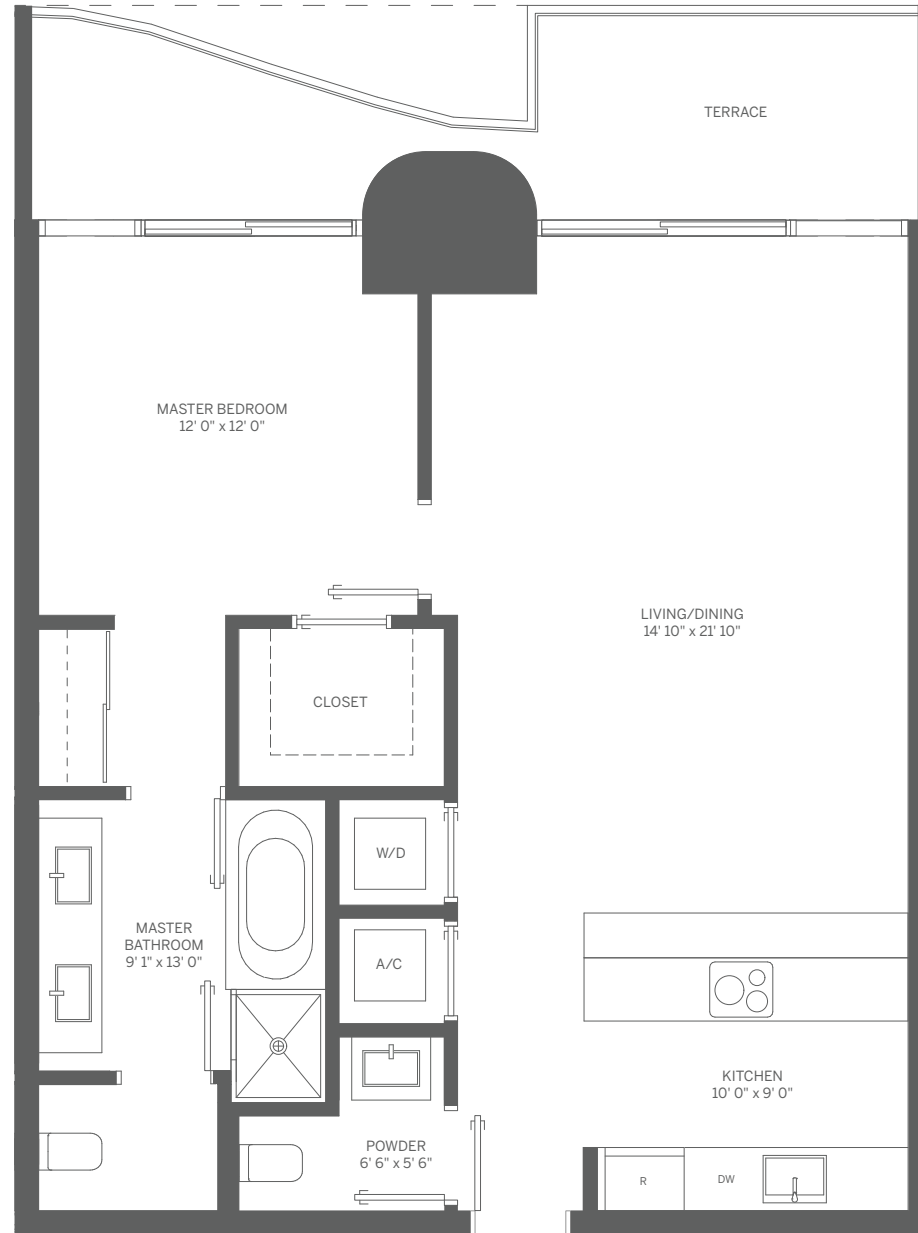
TOTAL: 1,088 SF / 101 m<sup>2</sup>



Stated dimensions are measured to the exterior boundaries of the exterior walls and the centerline of interior demising walls and in fact vary from the dimensions that would be determined by using the description and definition of the "Unit" set forth in the Declaration (which generally only includes the interior airspace between the perimeter walls and excludes interior structural components). For your reference, the area of the Unit, determined in accordance with those defined unit boundaries, is 839 SF. Note that measurements of rooms set forth on this floor plan are generally taken at the greatest points of each given room (as if the room were a perfect rectangle), without regard for any cutouts. Accordingly, the area of the actual room will typically be smaller than the product obtained by multiplying the stated length times width. All dimensions are approximate and may vary with actual construction, and all floor plans and development plans are subject to change.



Note: Terrace: 175 SF / 16 m<sup>2</sup> on Odd Floors  
Terrace: 145 SF / 13 m<sup>2</sup> on Even Floors

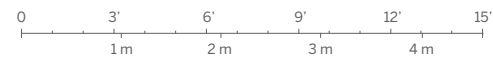


## TOWER UNIT 11 1 BEDROOM / 1.5 BATH

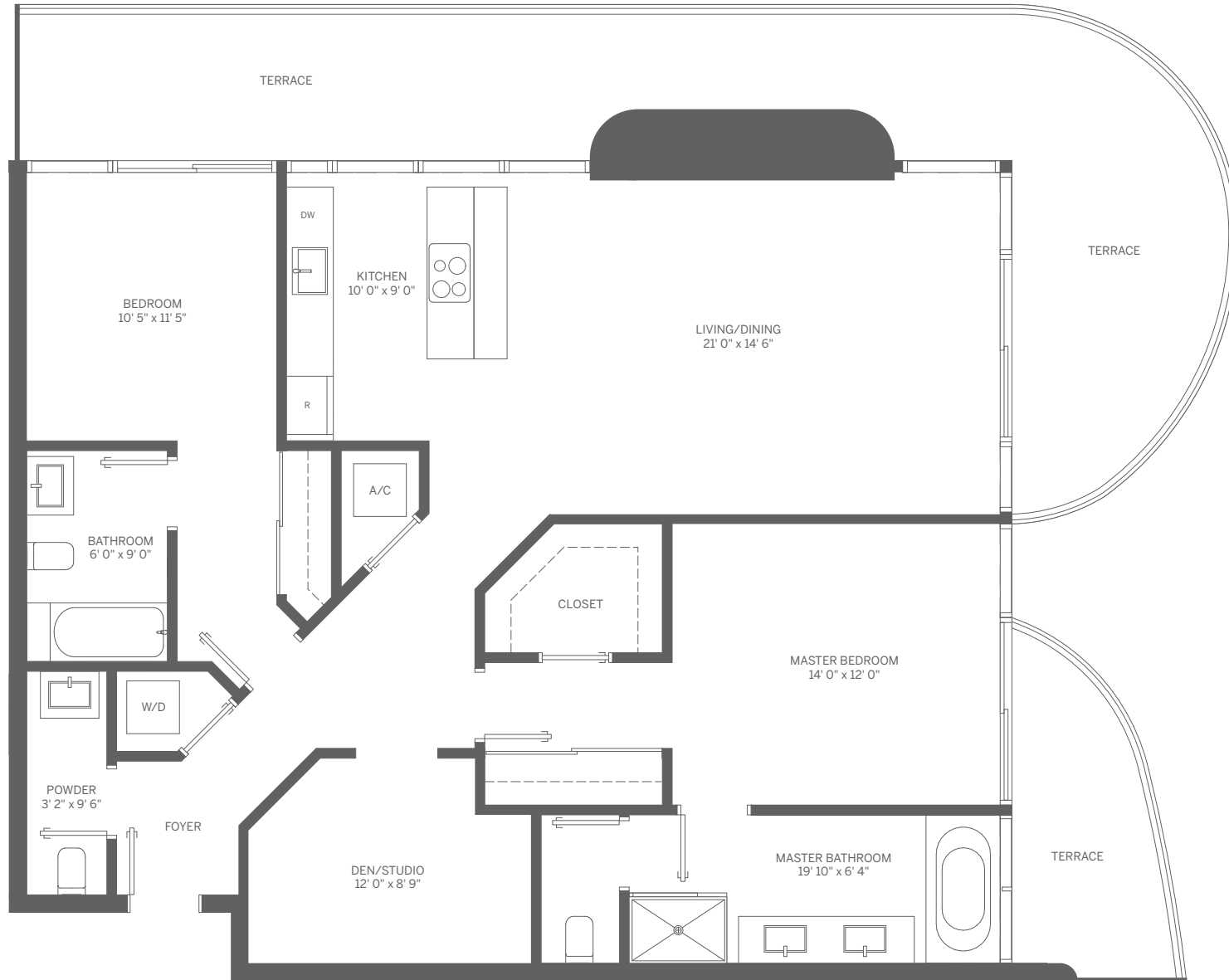
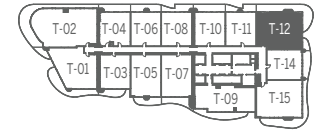
INTERIOR: 906 SF / 84 m<sup>2</sup>

TERRACE: 145 SF / 13 m<sup>2</sup>

TOTAL: 1,051 SF / 97 m<sup>2</sup>



Stated dimensions are measured to the exterior boundaries of the exterior walls and the centerline of interior demising walls and in fact vary from the dimensions that would be determined by using the description and definition of the "Unit" set forth in the Declaration (which generally only includes the interior airspace between the perimeter walls and excludes interior structural components). For your reference, the area of the Unit, determined in accordance with those defined unit boundaries, is 836 SF. Note that measurements of rooms set forth on this floor plan are generally taken at the greatest points of each given room (as if the room were a perfect rectangle), without regard for any cutouts. Accordingly, the area of the actual room will typically be smaller than the product obtained by multiplying the stated length times width. All dimensions are approximate and may vary with actual construction, and all floor plans and development plans are subject to change.

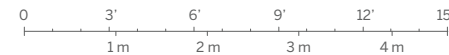


## TOWER UNIT 12 2 BEDROOM + DEN / 2.5 BATH

INTERIOR: 1,446 SF / 134 m<sup>2</sup>

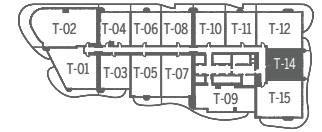
TERRACE: 506 SF / 47 m<sup>2</sup>

TOTAL: 1,952 SF / 181 m<sup>2</sup>



BRICKELL FLATIRON

Stated dimensions are measured to the exterior boundaries of the exterior walls and the centerline of interior demising walls and in fact vary from the dimensions that would be determined by using the description and definition of the "Unit" set forth in the Declaration (which generally only includes the interior airspace between the perimeter walls and excludes interior structural components). For your reference, the area of the Unit, determined in accordance with those defined unit boundaries, is 1,368 SF. Note that measurements of rooms set forth on this floor plan are generally taken at the greatest points of each given room (as if the room were a perfect rectangle), without regard for any cutouts. Accordingly, the area of the actual room will typically be smaller than the product obtained by multiplying the stated length times width. All dimensions are approximate and may vary with actual construction, and all floor plans and development plans are subject to change.

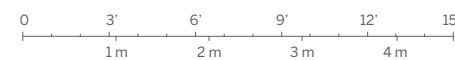


## TOWER UNIT 14 1 BEDROOM / 1.5 BATH

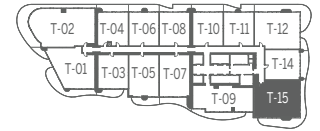
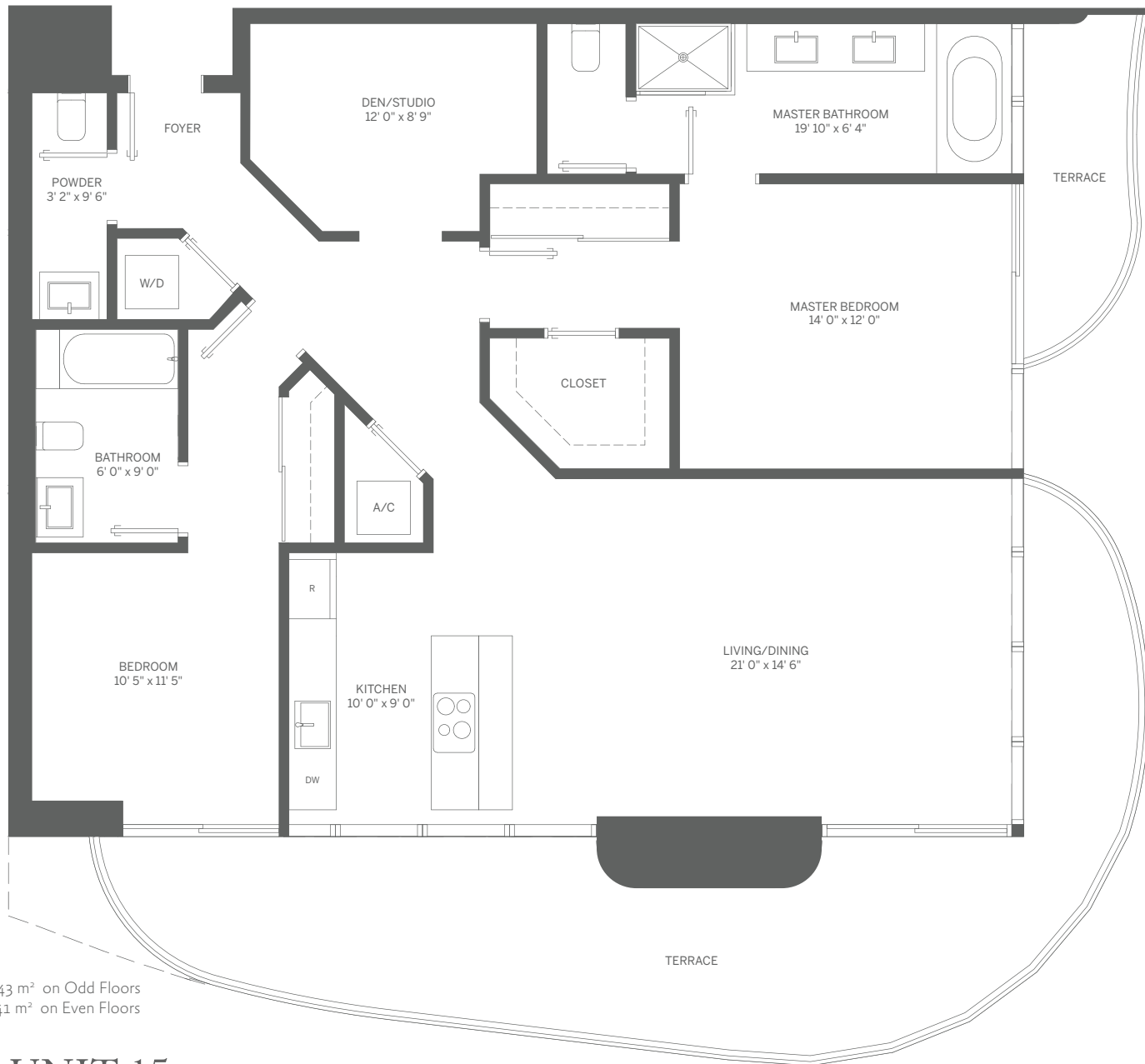
INTERIOR: 933 SF / 87 m<sup>2</sup>

TERRACE: 174 SF / 16 m<sup>2</sup>

TOTAL: 1,107 SF / 103 m<sup>2</sup>



Stated dimensions are measured to the exterior boundaries of the exterior walls and the centerline of interior demising walls and in fact vary from the dimensions that would be determined by using the description and definition of the "Unit" set forth in the Declaration (which generally only includes the interior airspace between the perimeter walls and excludes interior structural components). For your reference, the area of the Unit, determined in accordance with those defined unit boundaries, is 863 SF. Note that measurements of rooms set forth on this floor plan are generally taken at the greatest points of each given room (as if the room were a perfect rectangle), without regard for any cutouts. Accordingly, the area of the actual room will typically be smaller than the product obtained by multiplying the stated length times width. All dimensions are approximate and may vary with actual construction, and all floor plans and development plans are subject to change.



Note: Terrace: 458 SF / 43 m<sup>2</sup> on Odd Floors  
 Terrace: 438 SF / 41 m<sup>2</sup> on Even Floors

## TOWER UNIT 15 2 BEDROOM + DEN / 2.5 BATH

INTERIOR: 1,446 SF / 134 m<sup>2</sup>    TERRACE: 438 SF / 41 m<sup>2</sup>    TOTAL: 1,884 SF / 175 m<sup>2</sup>



Stated dimensions are measured to the exterior boundaries of the exterior walls and the centerline of interior demising walls and in fact vary from the dimensions that would be determined by using the description and definition of the "Unit" set forth in the Declaration (which generally only includes the interior airspace between the perimeter walls and excludes interior structural components). For your reference, the area of the Unit, determined in accordance with those defined unit boundaries, is 1,359 SF. Note that measurements of rooms set forth on this floor plan are generally taken at the greatest points of each given room (as if the room were a perfect rectangle), without regard for any cutouts. Accordingly, the area of the actual room will typically be smaller than the product obtained by multiplying the stated length times width. All dimensions are approximate and may vary with actual construction, and all floor plans and development plans are subject to change.




## PENTHOUSE UNITS KEY PLAN

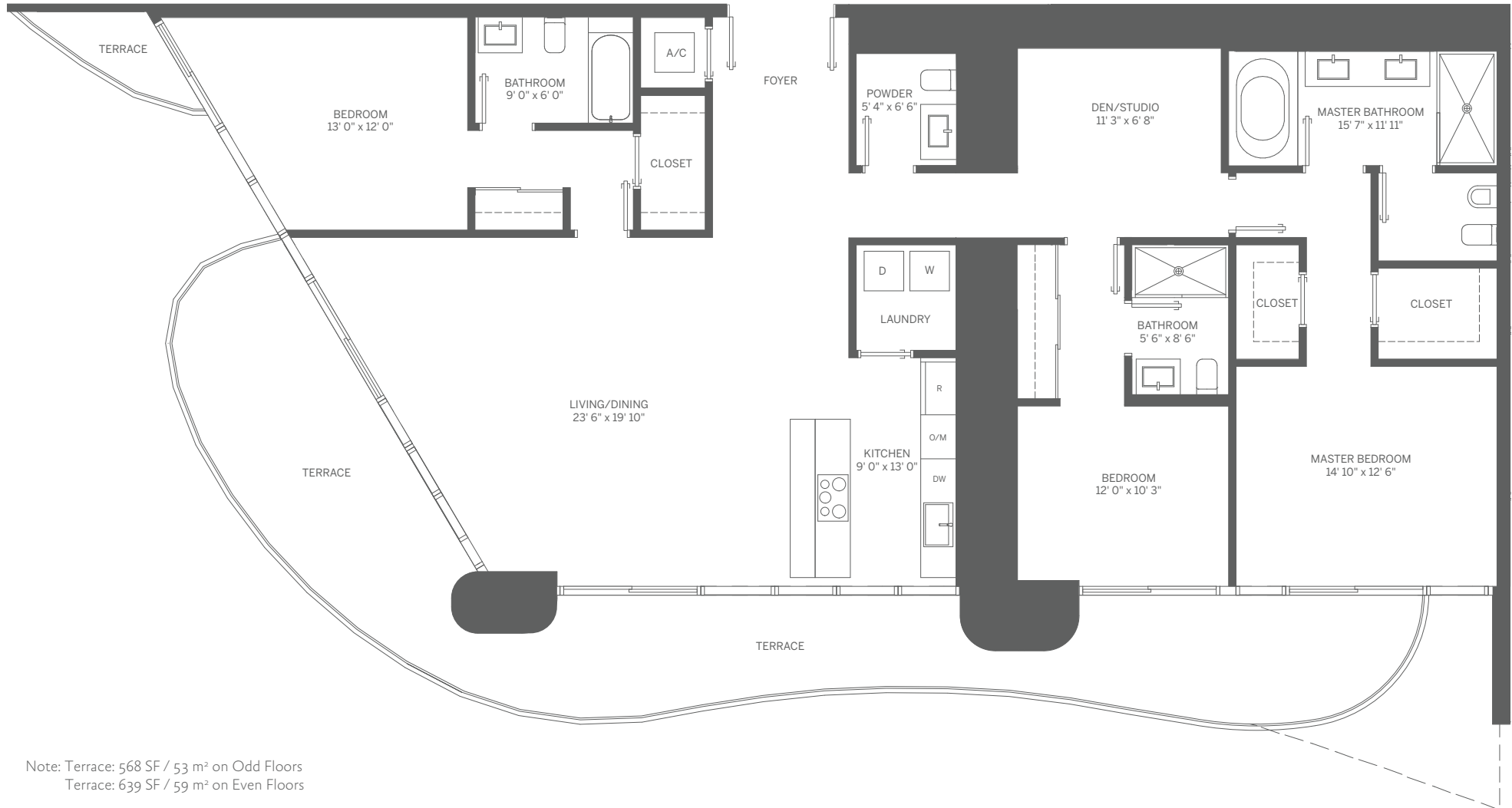
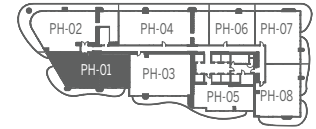
LEVELS 50-61



BRICKELL FLATIRON

 Stated dimensions are measured to the exterior boundaries of the exterior walls and the centerline of interior demising walls and in fact vary from the dimensions that would be determined by using the description and definition of the "Unit" set forth in the Declaration (which generally only includes the interior airspace between the perimeter walls and excludes interior structural components). Note that measurements of rooms set forth on this floor plan are generally taken at the greatest points of each given room (as if the room were a perfect rectangle), without regard for any cutouts. Accordingly, the area of the actual room will typically be smaller than the product obtained by multiplying the stated length times width. All dimensions are approximate and may vary with actual construction, and all floor plans and development plans are subject to change.

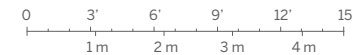




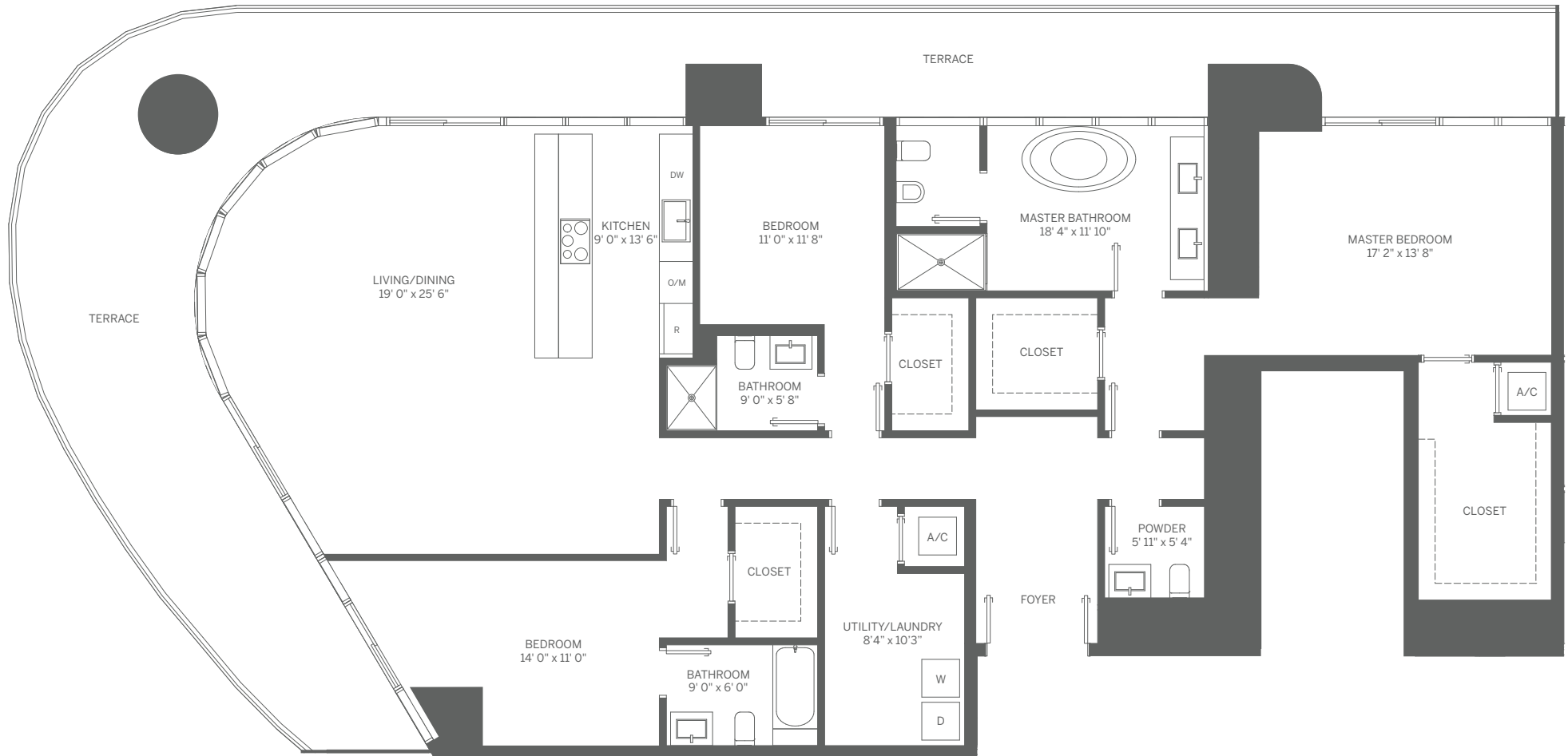
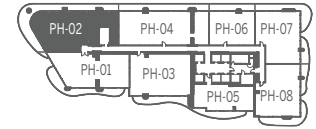
Note: Terrace: 568 SF / 53 m<sup>2</sup> on Odd Floors  
Terrace: 639 SF / 59 m<sup>2</sup> on Even Floors

## PENTHOUSE 01 3 BEDROOM + DEN / 3.5 BATH

INTERIOR: 2,123 SF / 197 m<sup>2</sup>    TERRACE: 568 SF / 53 m<sup>2</sup>    TOTAL: 2,691 SF / 250 m<sup>2</sup>



Stated dimensions are measured to the exterior boundaries of the exterior walls and the centerline of interior demising walls and in fact vary from the dimensions that would be determined by using the description and definition of the "Unit" set forth in the Declaration (which generally only includes the interior airspace between the perimeter walls and excludes interior structural components). For your reference, the area of the Unit, determined in accordance with those defined unit boundaries, is 1,986 SF. Note that measurements of rooms set forth on this floor plan are generally taken at the greatest points of each given room (as if the room were a perfect rectangle), without regard for any cutouts. Accordingly, the area of the actual room will typically be smaller than the product obtained by multiplying the stated length times width. All dimensions are approximate and may vary with actual construction, and all floor plans and development plans are subject to change.



## PENTHOUSE 02 3 BEDROOM / 3.5 BATH

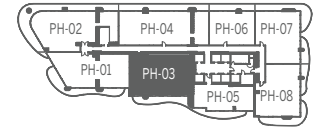
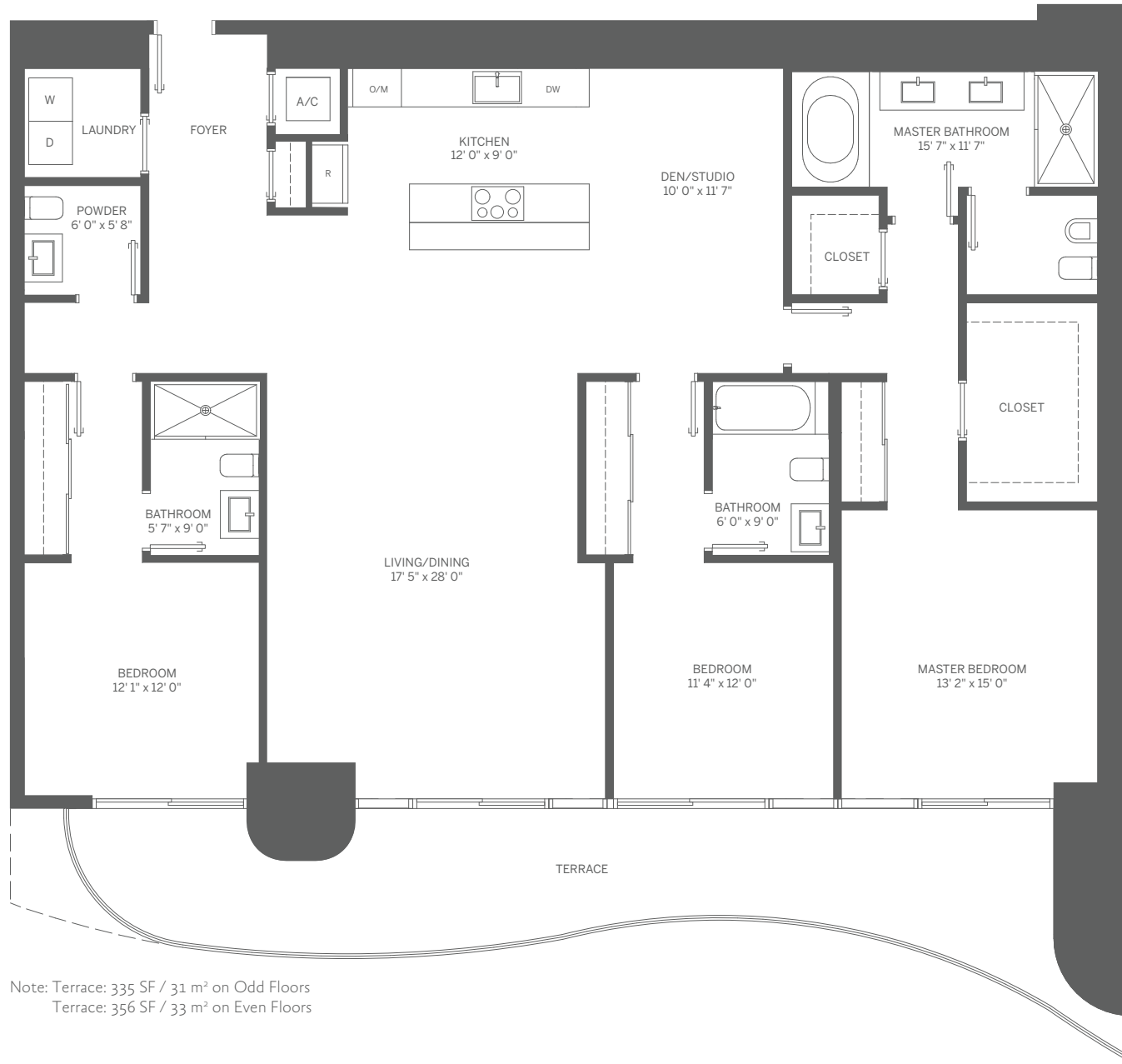
INTERIOR: 2,406 SF / 224 m<sup>2</sup>

TERRACE: 963 SF / 89 m<sup>2</sup>

TOTAL: 3,369 SF / 313 m<sup>2</sup>



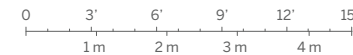
Stated dimensions are measured to the exterior boundaries of the exterior walls and the centerline of interior demising walls and in fact vary from the dimensions that would be determined by using the description and definition of the "Unit" set forth in the Declaration (which generally only includes the interior airspace between the perimeter walls and excludes interior structural components). For your reference, the area of the Unit, determined in accordance with those defined unit boundaries, is 2,255 SF. Note that measurements of rooms set forth on this floor plan are generally taken at the greatest points of each given room (as if the room were a perfect rectangle), without regard for any cutouts. Accordingly, the area of the actual room will typically be smaller than the product obtained by multiplying the stated length times width. All dimensions are approximate and may vary with actual construction, and all floor plans and development plans are subject to change.



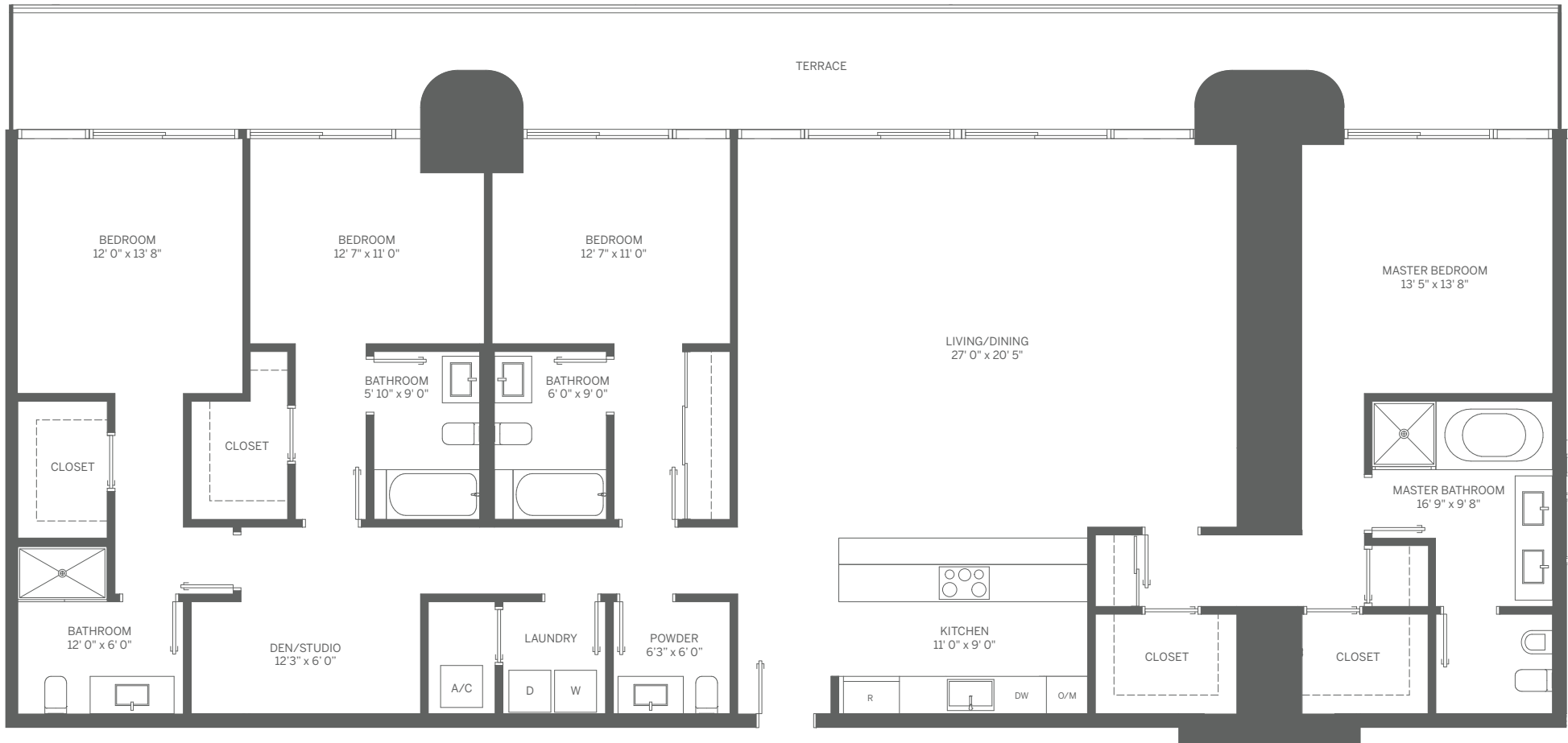
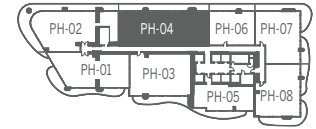
Note: Terrace: 335 SF / 31 m<sup>2</sup> on Odd Floors  
 Terrace: 356 SF / 33 m<sup>2</sup> on Even Floors

## PENTHOUSE 03 3 BEDROOM + DEN / 3.5 BATH

INTERIOR: 2,211 SF / 205 m<sup>2</sup>    TERRACE: 335 SF / 31 m<sup>2</sup>    TOTAL: 2,546 SF / 236 m<sup>2</sup>



Stated dimensions are measured to the exterior boundaries of the exterior walls and the centerline of interior demising walls and in fact vary from the dimensions that would be determined by using the description and definition of the "Unit" set forth in the Declaration (which generally only includes the interior airspace between the perimeter walls and excludes interior structural components). For your reference, the area of the Unit, determined in accordance with those defined unit boundaries, is 2,086 SF. Note that measurements of rooms set forth on this floor plan are generally taken at the greatest points of each given room (as if the room were a perfect rectangle), without regard for any cutouts. Accordingly, the area of the actual room will typically be smaller than the product obtained by multiplying the stated length times width. All dimensions are approximate and may vary with actual construction, and all floor plans and development plans are subject to change.

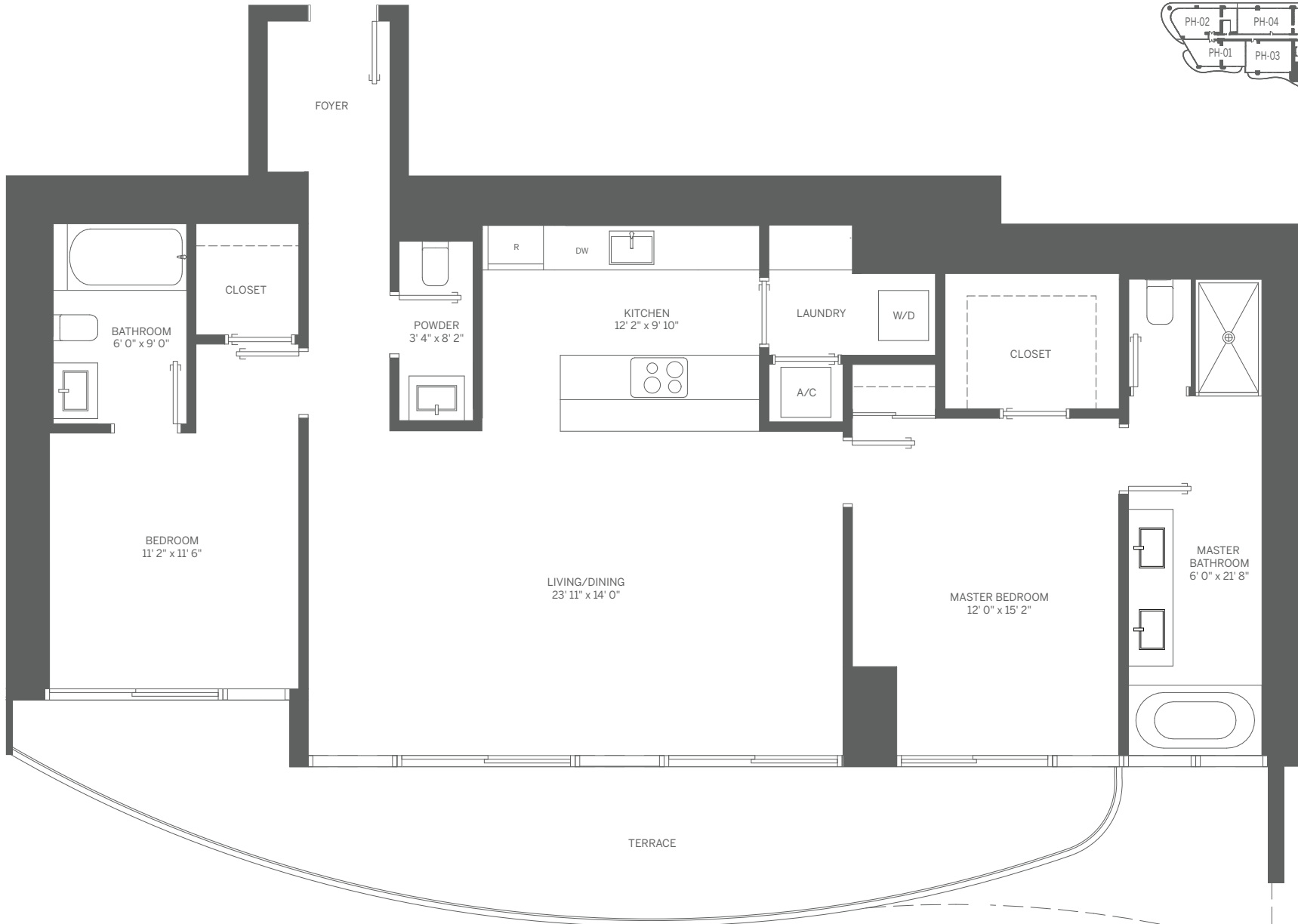
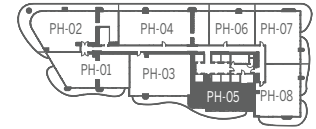


## PENTHOUSE 04 4 BEDROOM + DEN / 4.5 BATH

INTERIOR: 2,592 SF / 241 m<sup>2</sup> TERRACE: 509 SF / 47 m<sup>2</sup> TOTAL: 3,101 SF / 288 m<sup>2</sup>



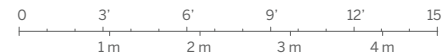
Stated dimensions are measured to the exterior boundaries of the exterior walls and the centerline of interior demising walls and in fact vary from the dimensions that would be determined by using the description and definition of the "Unit" set forth in the Declaration (which generally only includes the interior airspace between the perimeter walls and excludes interior structural components). For your reference, the area of the Unit, determined in accordance with those defined unit boundaries, is 2,406 SF. Note that measurements of rooms set forth on this floor plan are generally taken at the greatest points of each given room (as if the room were a perfect rectangle), without regard for any cutouts. Accordingly, the area of the actual room will typically be smaller than the product obtained by multiplying the stated length times width. All dimensions are approximate and may vary with actual construction, and all floor plans and development plans are subject to change.



# PENTHOUSE 05 2 BEDROOM / 2.5 BATH

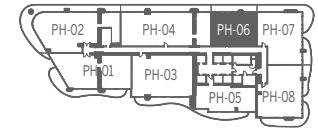
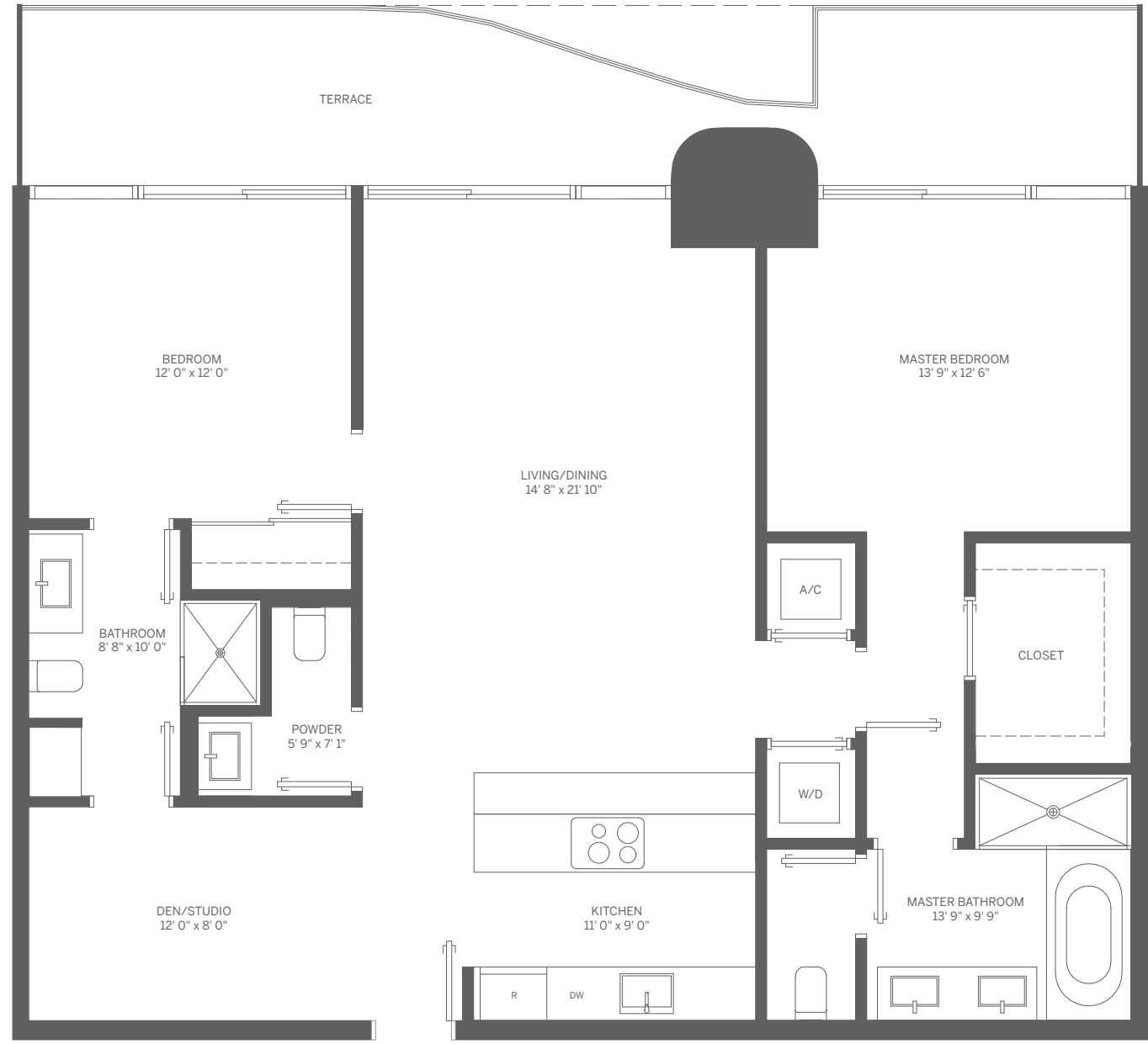
INTERIOR: 1,369 SF / 127 m<sup>2</sup>    TERRACE: 288 SF / 27 m<sup>2</sup>    TOTAL: 1,657 SF / 154 m<sup>2</sup>

Note: Terrace: 355 SF / 33 m<sup>2</sup> on Odd Floors  
Terrace: 288 SF / 27 m<sup>2</sup> on Even Floors



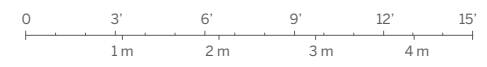
Stated dimensions are measured to the exterior boundaries of the exterior walls and the centerline of interior demising walls and in fact vary from the dimensions that would be determined by using the description and definition of the "Unit" set forth in the Declaration (which generally only includes the interior airspace between the perimeter walls and excludes interior structural components). For your reference, the area of the Unit, determined in accordance with those defined unit boundaries, is 1,253 SF. Note that measurements of rooms set forth on this floor plan are generally taken at the greatest points of each given room (as if the room were a perfect rectangle), without regard for any cutouts. Accordingly, the area of the actual room will typically be smaller than the product obtained by multiplying the stated length times width. All dimensions are approximate and may vary with actual construction, and all floor plans and development plans are subject to change.

Note: Terrace: 267 SF / 25 m<sup>2</sup> on Odd Floors  
 Terrace: 237 SF / 22 m<sup>2</sup> on Even Floors

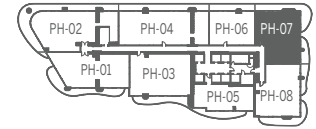


## PENTHOUSE 06 2 BEDROOM + DEN / 2.5 BATH

INTERIOR: 1,350 SF / 125 m<sup>2</sup>    TERRACE: 237 SF / 22 m<sup>2</sup>    TOTAL: 1,587 SF / 147 m<sup>2</sup>



Stated dimensions are measured to the exterior boundaries of the exterior walls and the centerline of interior demising walls and in fact vary from the dimensions that would be determined by using the description and definition of the "Unit" set forth in the Declaration (which generally only includes the interior airspace between the perimeter walls and excludes interior structural components). For your reference, the area of the Unit, determined in accordance with those defined unit boundaries, is 1,263 SF. Note that measurements of rooms set forth on this floor plan are generally taken at the greatest points of each given room (as if the room were a perfect rectangle), without regard for any cutouts. Accordingly, the area of the actual room will typically be smaller than the product obtained by multiplying the stated length times width. All dimensions are approximate and may vary with actual construction, and all floor plans and development plans are subject to change.

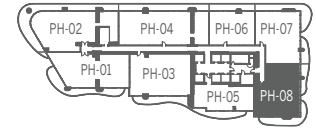
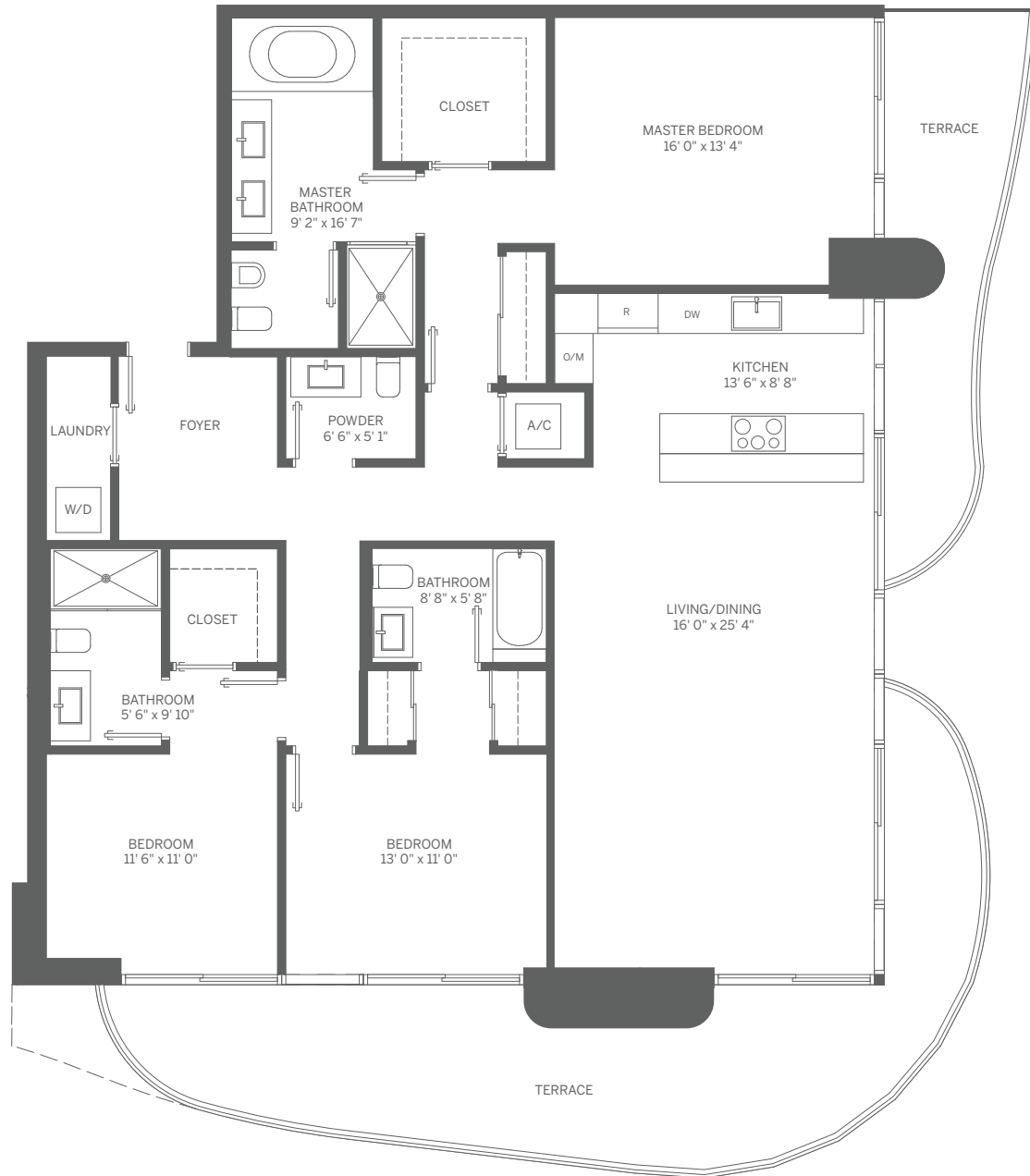


## PENTHOUSE 07 3 BEDROOM / 3.5 BATH

INTERIOR: 1,912 SF / 178 m<sup>2</sup>    TERRACE: 601 SF / 56 m<sup>2</sup>    TOTAL: 2,513 SF / 233 m<sup>2</sup>



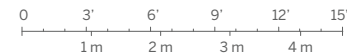
Stated dimensions are measured to the exterior boundaries of the exterior walls and the centerline of interior demising walls and in fact vary from the dimensions that would be determined by using the description and definition of the "Unit" set forth in the Declaration (which generally only includes the interior airspace between the perimeter walls and excludes interior structural components). For your reference, the area of the Unit, determined in accordance with those defined unit boundaries, is 1,809 SF. Note that measurements of rooms set forth on this floor plan are generally taken at the greatest points of each given room (as if the room were a perfect rectangle), without regard for any cutouts. Accordingly, the area of the actual room will typically be smaller than the product obtained by multiplying the stated length times width. All dimensions are approximate and may vary with actual construction, and all floor plans and development plans are subject to change.



Note: Terrace: 538 SF / 52 m<sup>2</sup> on Odd Floors  
 Terrace: 518 SF / 50 m<sup>2</sup> on Even Floors

## PENTHOUSE 08 3 BEDROOM / 3.5 BATH

INTERIOR: 1,912 SF / 178 m<sup>2</sup>    TERRACE: 518 SF / 48 m<sup>2</sup>    TOTAL: 2,430 SF / 226 m<sup>2</sup>



Stated dimensions are measured to the exterior boundaries of the exterior walls and the centerline of interior demising walls and in fact vary from the dimensions that would be determined by using the description and definition of the "Unit" set forth in the Declaration (which generally only includes the interior airspace between the perimeter walls and excludes interior structural components). For your reference, the area of the Unit, determined in accordance with those defined unit boundaries, is 1,797 SF. Note that measurements of rooms set forth on this floor plan are generally taken at the greatest points of each given room (as if the room were a perfect rectangle), without regard for any cutouts. Accordingly, the area of the actual room will typically be smaller than the product obtained by multiplying the stated length times width. All dimensions are approximate and may vary with actual construction, and all floor plans and development plans are subject to change.