

# RESIDENCE 01

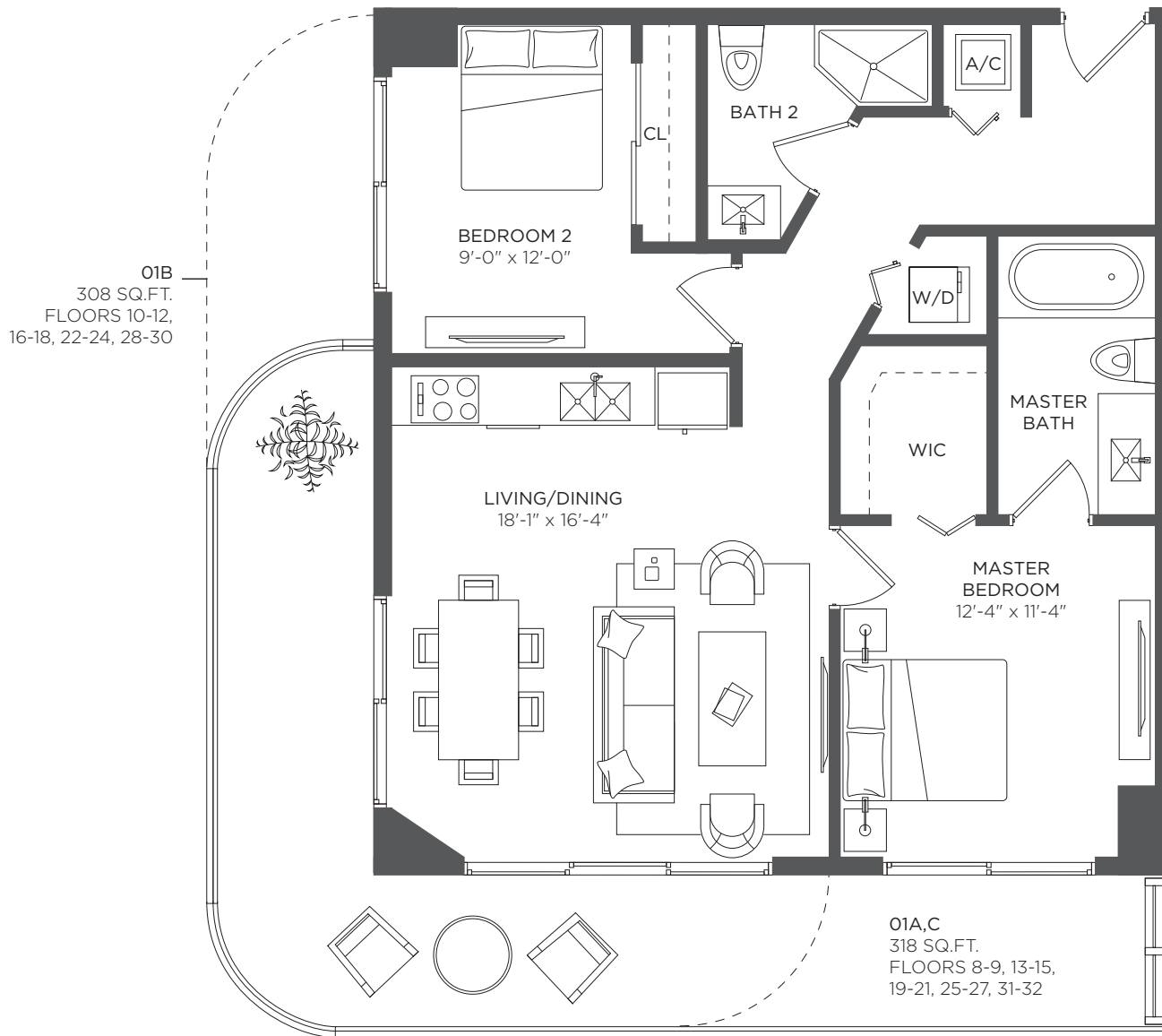
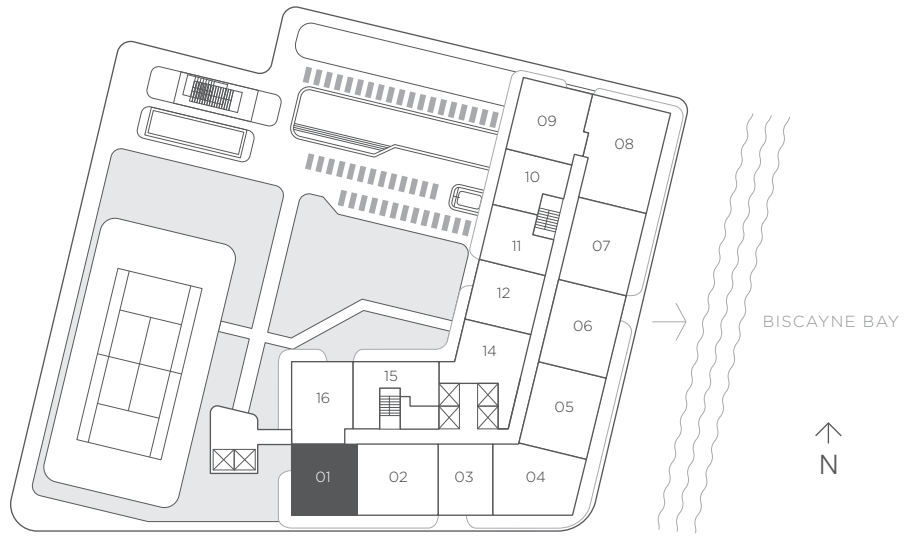
## 2 Bedrooms 2 Baths

A/C INTERIOR AREA 938 sq ft / 87.14 sq m

TERRACE AREA (O1A) 318 sq ft / 29.54 sq m

TOTAL RESIDENCE 1,256 sq ft / 116.68 sq m

FLOORS 8 - 32



# RESIDENCE 01

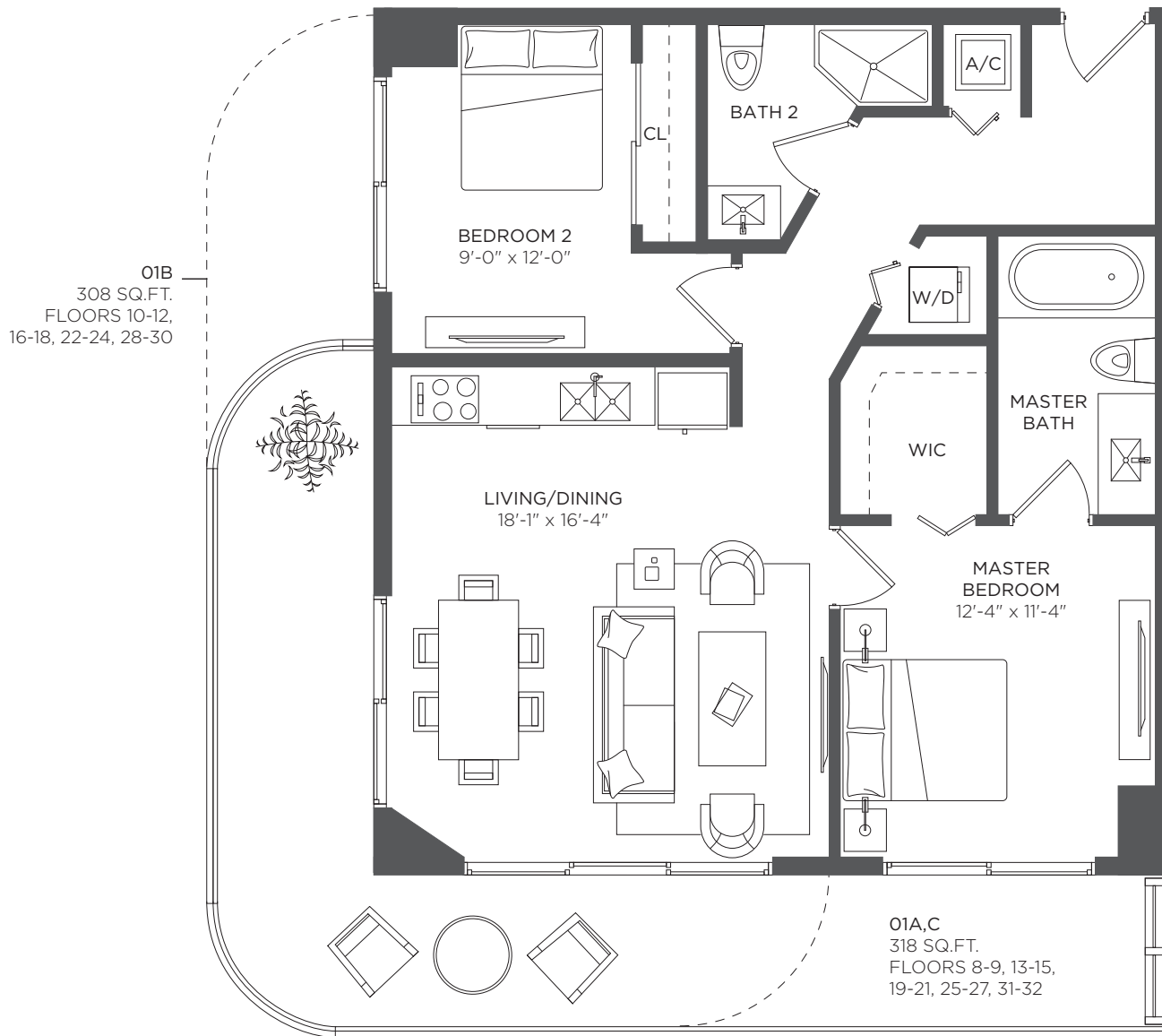
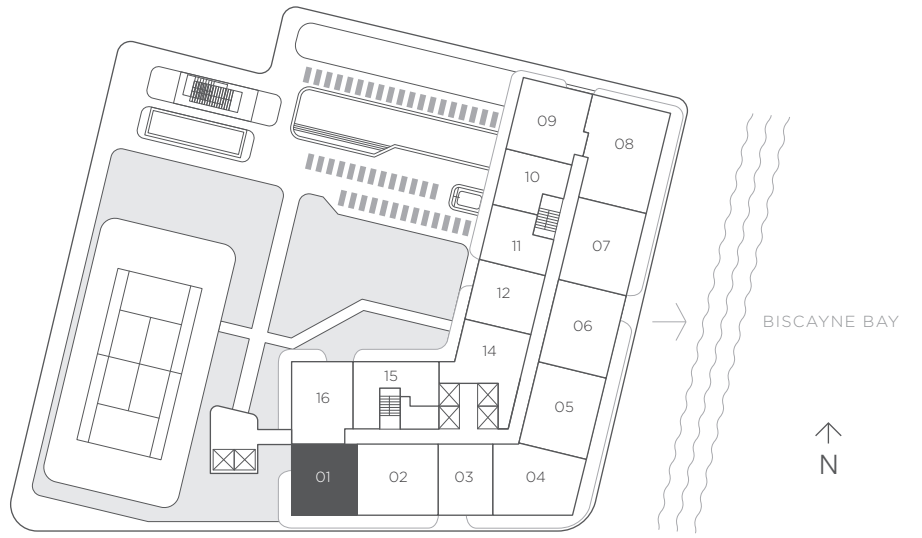
## 2 Bedrooms 2 Baths

A/C INTERIOR AREA 938 sq ft / 87.14 sq m

TERRACE AREA (O1A) 318 sq ft / 29.54 sq m

TOTAL RESIDENCE 1,256 sq ft / 116.68 sq m

FLOORS 8 - 32



# RESIDENCE 02

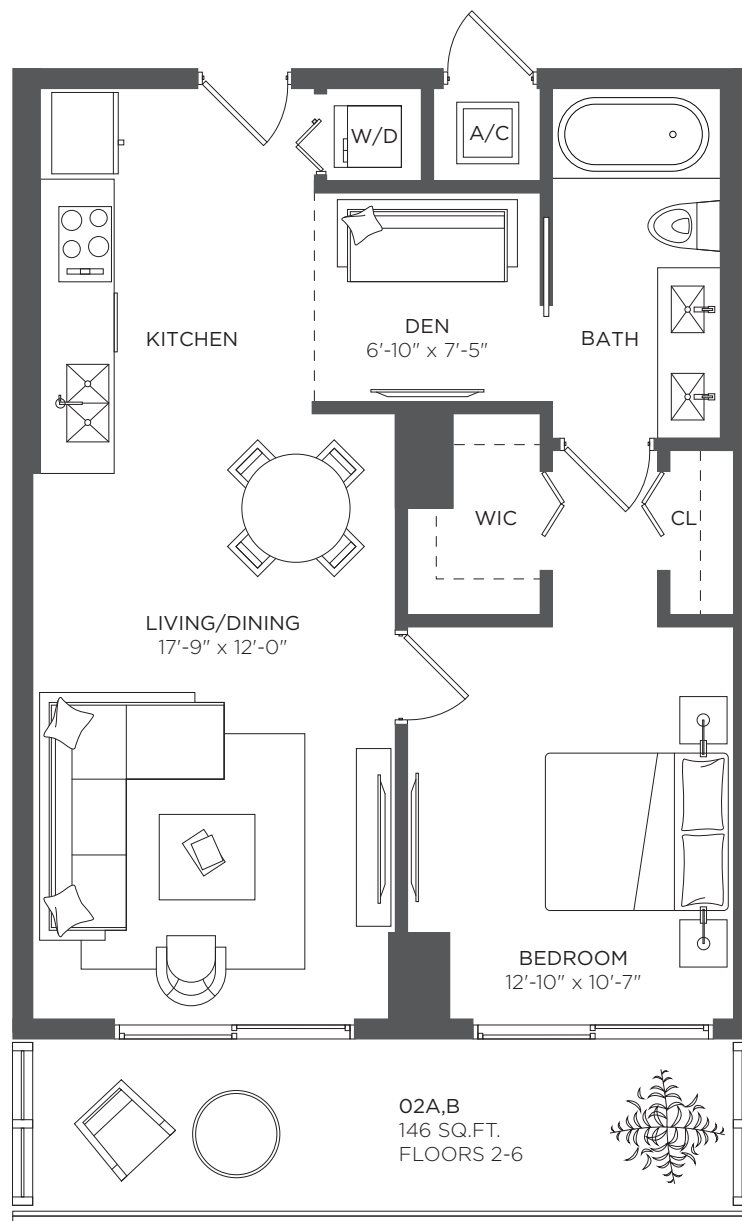
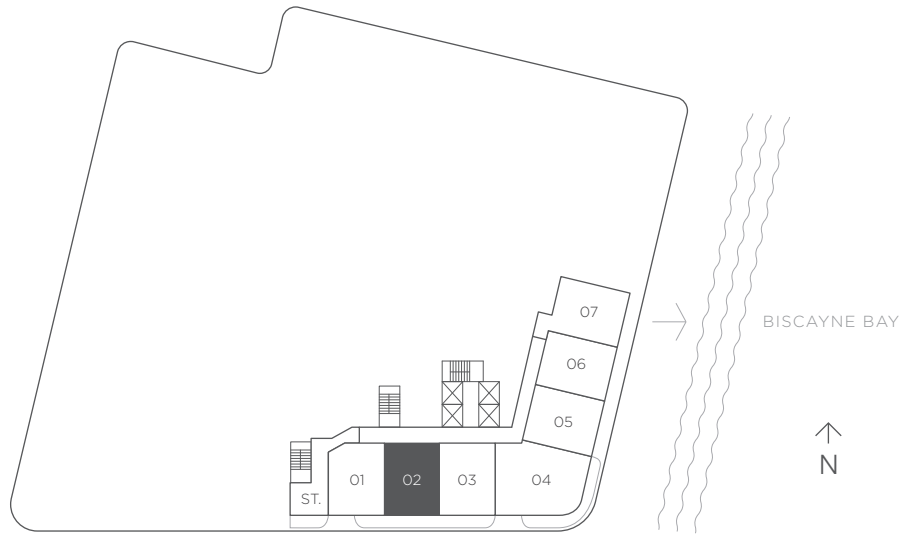
## 1 Bedroom 1 Bath + Den

A/C INTERIOR AREA 787 sq ft / 73.14 sq m

TERRACE AREA (O2A) 146 sq ft / 13.56 sq m

TOTAL RESIDENCE 933 sq ft / 86.70 sq m

FLOORS 2 - 6



# RESIDENCE 02

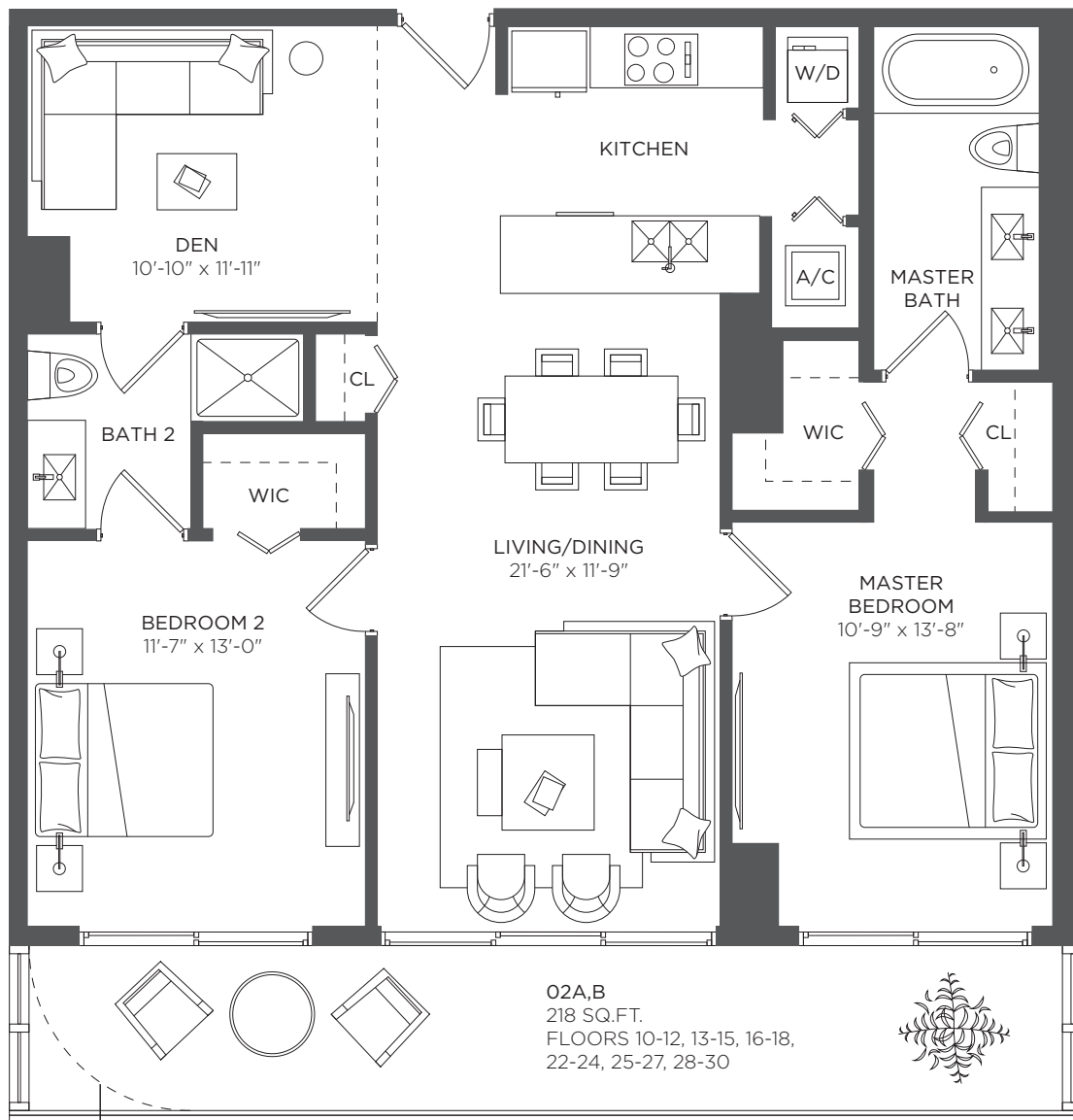
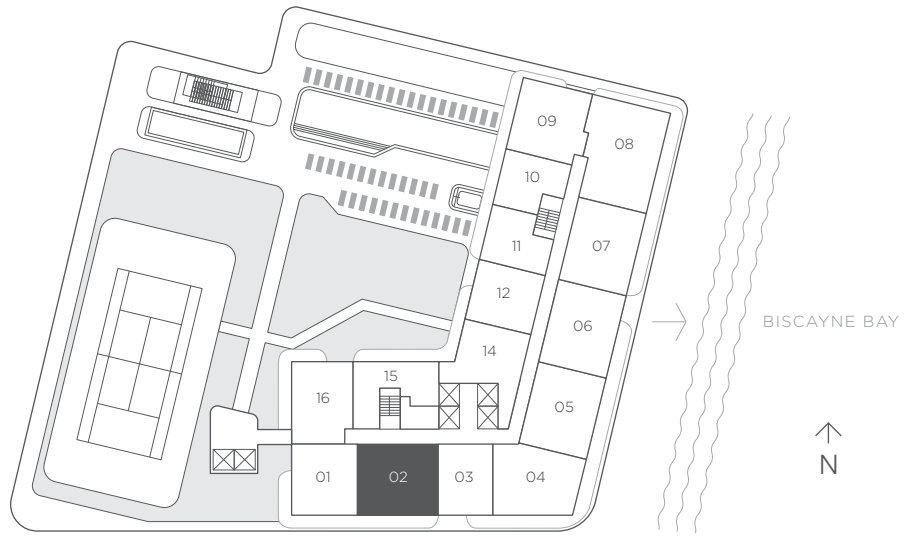
## 2 Bedrooms 2 Baths + Den

A/C INTERIOR AREA 1,171 sq ft / 108.78 sq m

TERRACE AREA (O2A) 218 sq ft / 20.25 sq m

TOTAL RESIDENCE 1,389 sq ft / 129.03 sq m

FLOORS 8 - 32



02C  
212 SQ.FT.  
FLOORS 8-9, 19-21, 31-32

Each purchaser is advised that there are various methods for calculating the square footage of a Unit, and that depending on the method of calculation, the quoted square footage of a Unit in advertising materials may vary from the square footage of a Unit as stated or described in the Prospectus and the Declaration. The dimensions of the Unit shown in these floor plans have been calculated from the exterior boundaries of the exterior walls to the centerline of interior demising walls, including common elements such as structural walls and other interior structural components of the building and in fact vary from the dimensions that would be determined by using the description and definition of the "Unit" set forth in the Prospectus and the Declaration. For your reference, the area of the Unit, determined in accordance with Unit boundaries as defined in the Prospectus and the Declaration is less than the square footage reflected here. The configuration and use of space or the floor plan design may vary from that in the Prospectus and Declaration because the Developer has reserved the right in the Prospectus to make design, dimension, specification, and plan changes at any time, in the Developer's discretion, without notice to Unit buyers. Note that measurements of rooms set forth on this floor plan are generally taken at the greatest points of each given room (as if the room were a perfect rectangle), without regard for any cutouts. Accordingly, the area of the actual room will typically be smaller than the product obtained by multiplying the stated length times width. All dimensions are approximate and may vary with actual construction, and all floor plans and development plans are subject to change. The furnishings and décor illustrated are not included with the purchase of the Unit. See Prospectus for additional information regarding what is offered with the Unit and the calculation of Unit square footage and dimensions.

# RESIDENCE 03

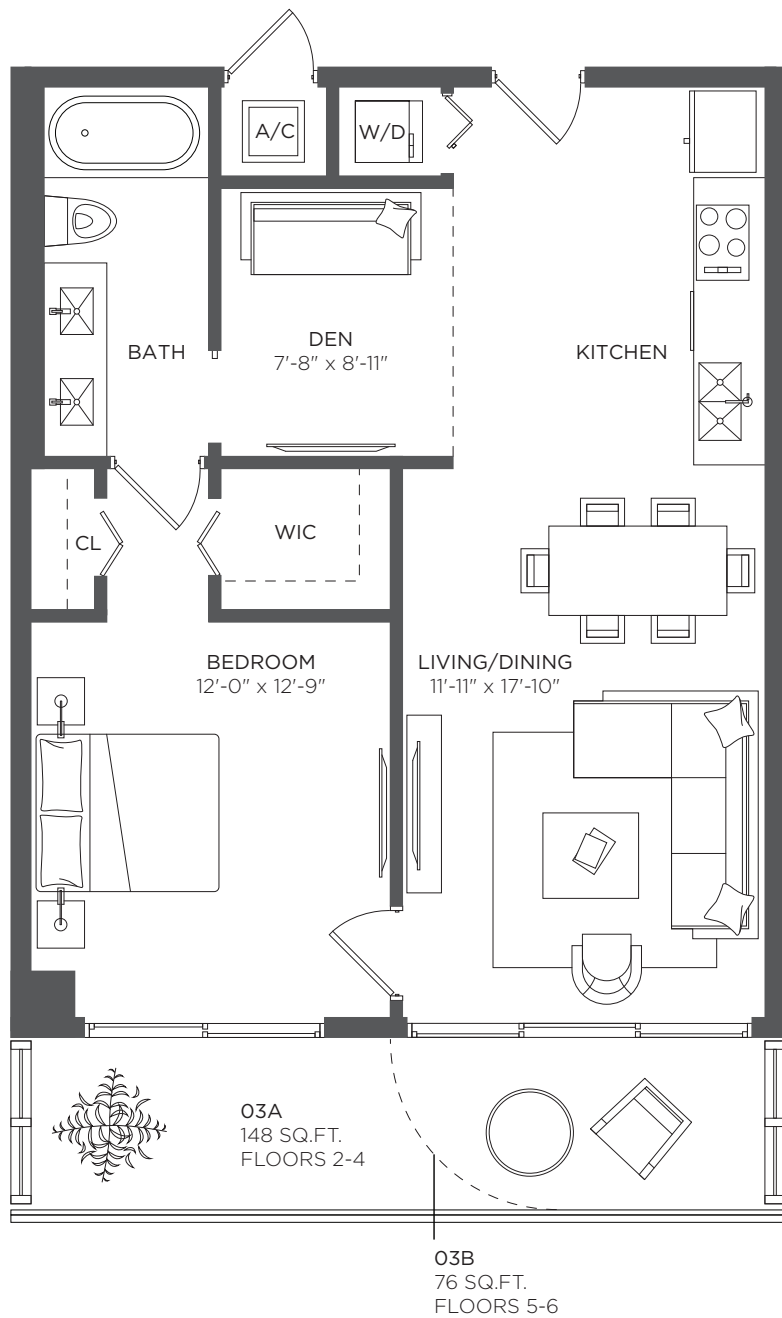
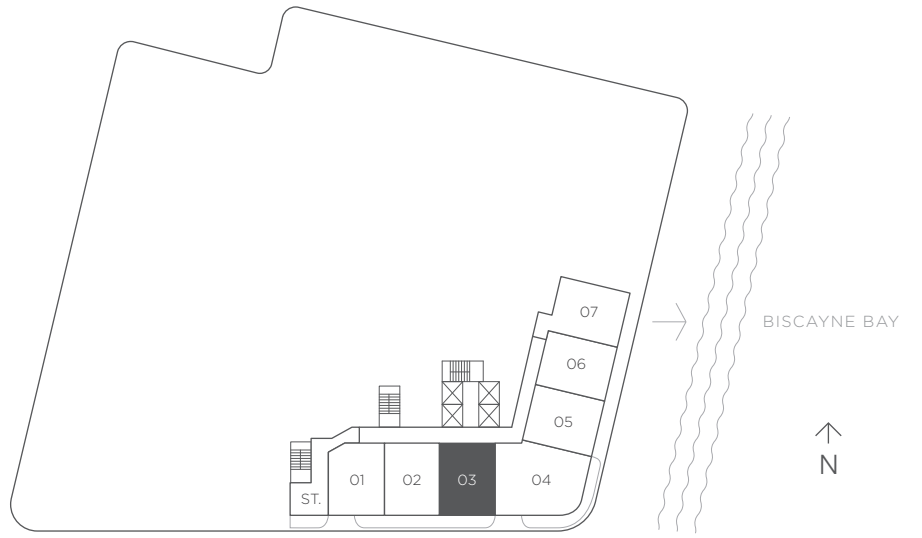
## 1 Bedroom 1 Bath + Den

A/C INTERIOR AREA 802 sq ft / 74.53 sq m

TERRACE AREA (O3A) 148 sq ft / 13.75 sq m

TOTAL RESIDENCE 950 sq ft / 88.28 sq m

FLOORS 2 - 6



# RESIDENCE 03

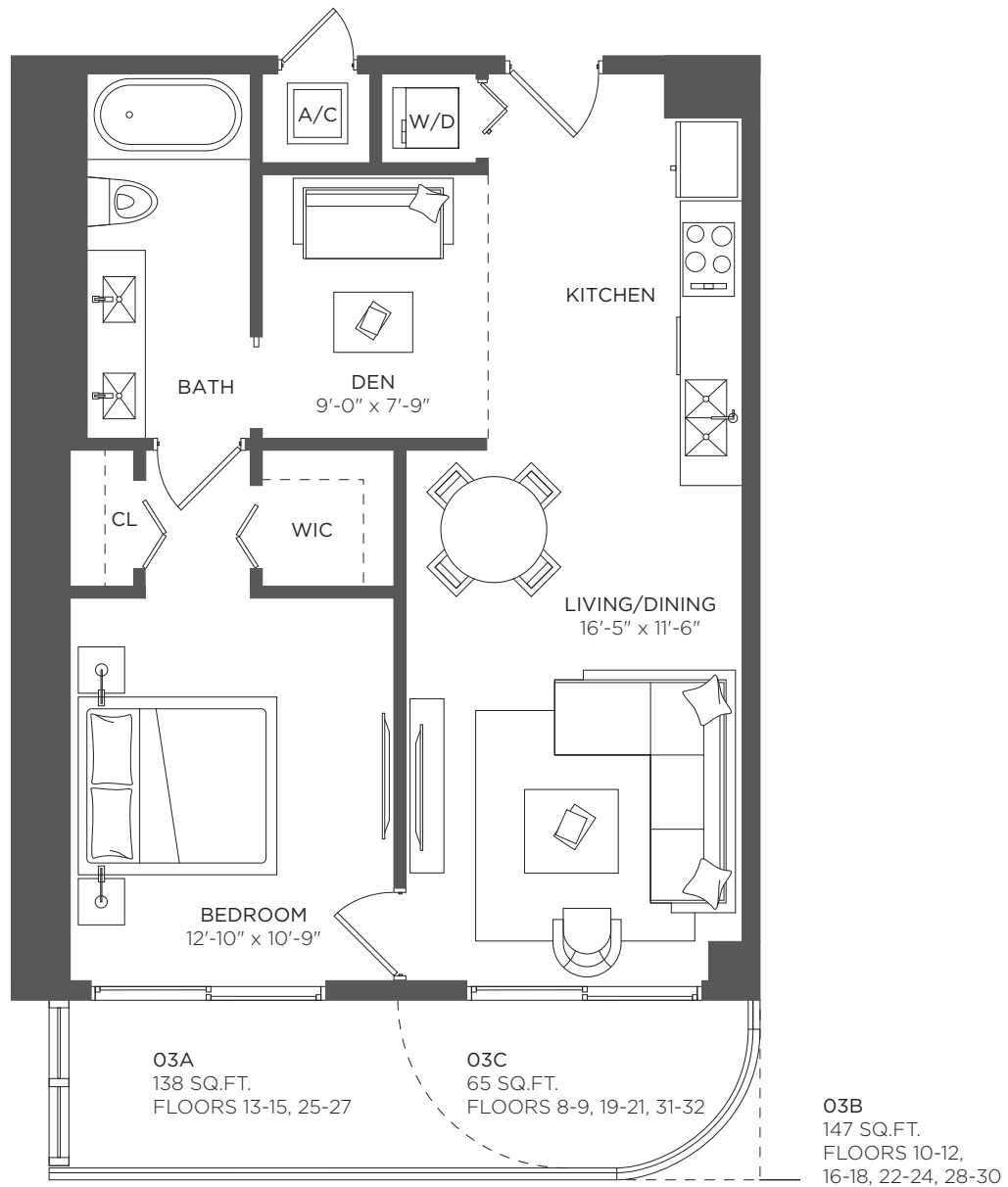
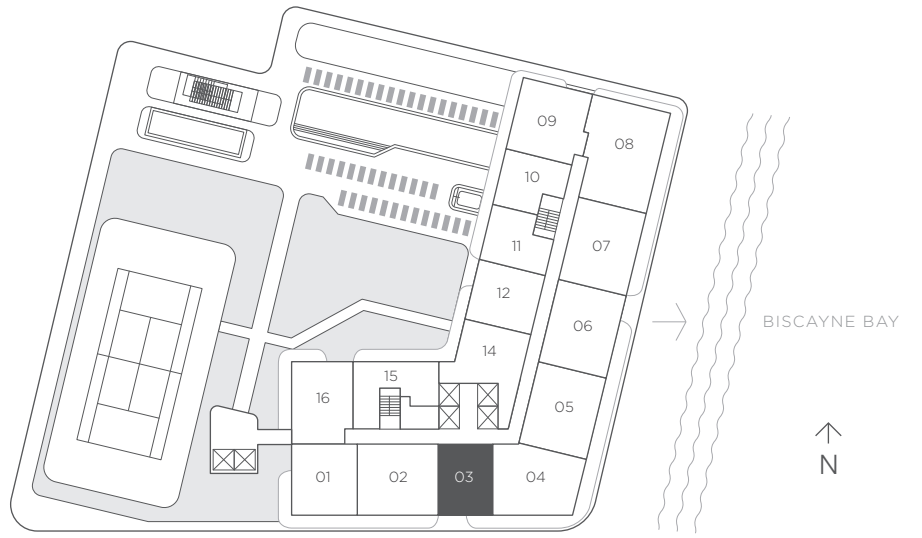
## 1 Bedroom 1 Bath + Den

A/C INTERIOR AREA 775 sq ft / 72 sq m

TERRACE AREA (O3A) 138 sq ft / 12.82 sq m

TOTAL RESIDENCE 913 sq ft / 84.82 sq m

FLOORS 8 - 32



Each purchaser is advised that there are various methods for calculating the square footage of a Unit, and that depending on the method of calculation, the quoted square footage of a Unit in advertising materials may vary from the square footage of a Unit as stated or described in the Prospectus and the Declaration. The dimensions of the Unit shown in these floor plans have been calculated from the exterior boundaries of the exterior walls to the centerline of interior demising walls, including common elements such as structural walls and other interior structural components of the building and in fact vary from the dimensions that would be determined by using the description and definition of the "Unit" set forth in the Prospectus and the Declaration. For your reference, the area of the Unit, determined in accordance with Unit boundaries as defined in the Prospectus and the Declaration is less than the square footage reflected here. The configuration and use of space or the floor plan design may vary from that in the Prospectus and Declaration because the Developer has reserved the right in the Prospectus to make design, dimension, specification, and plan changes at any time, in the Developer's discretion, without notice to Unit buyers. Note that measurements of rooms set forth on this floor plan are generally taken at the greatest points of each given room (as if the room were a perfect rectangle), without regard for any cutouts. Accordingly, the area of the actual room will typically be smaller than the product obtained by multiplying the stated length times width. All dimensions are approximate and may vary with actual construction, and all floor plans and development plans are subject to change. The furnishings and décor illustrated are not included with the purchase of the Unit. See Prospectus for additional information regarding what is offered with the Unit and the calculation of Unit square footage and dimensions.

# RESIDENCE 04

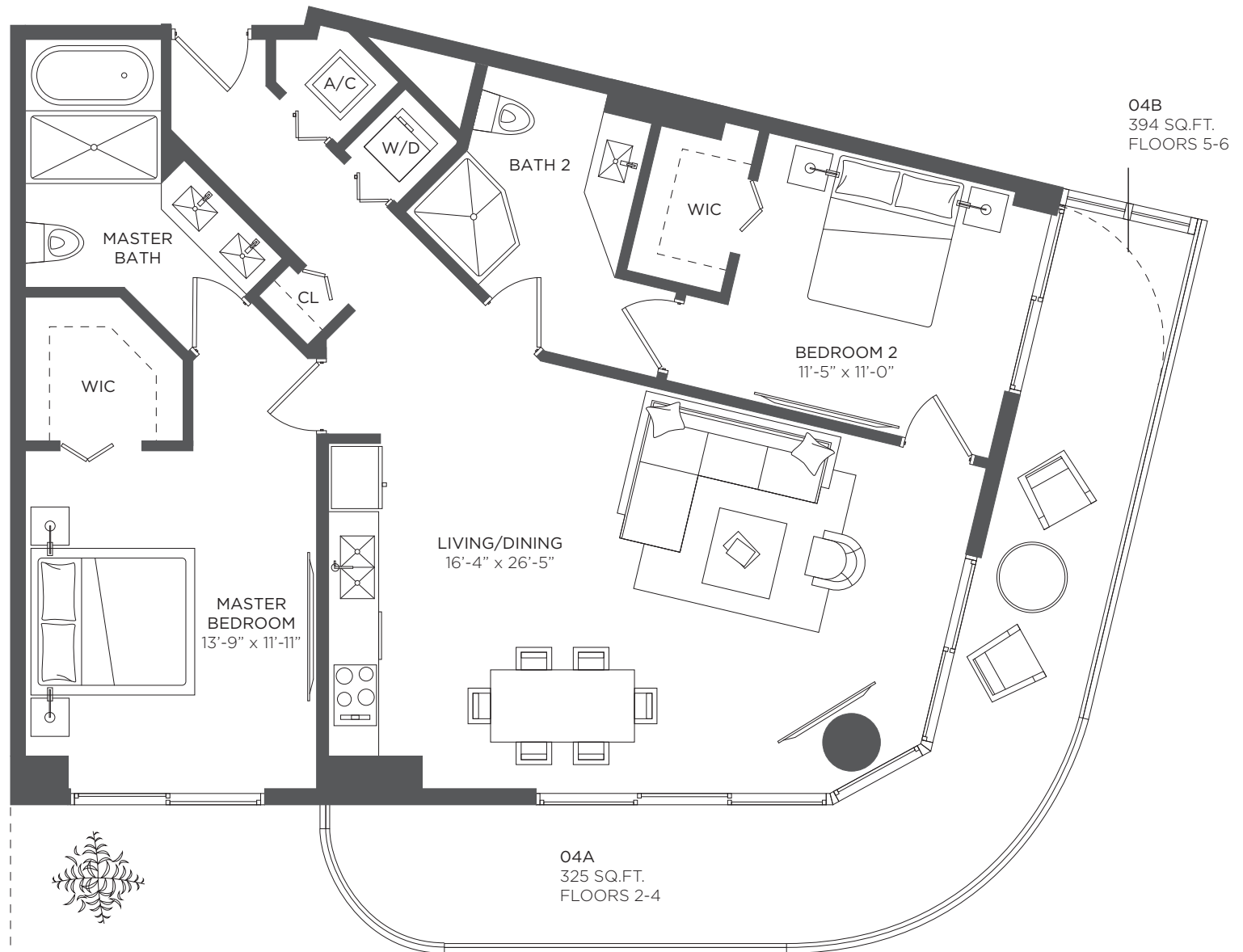
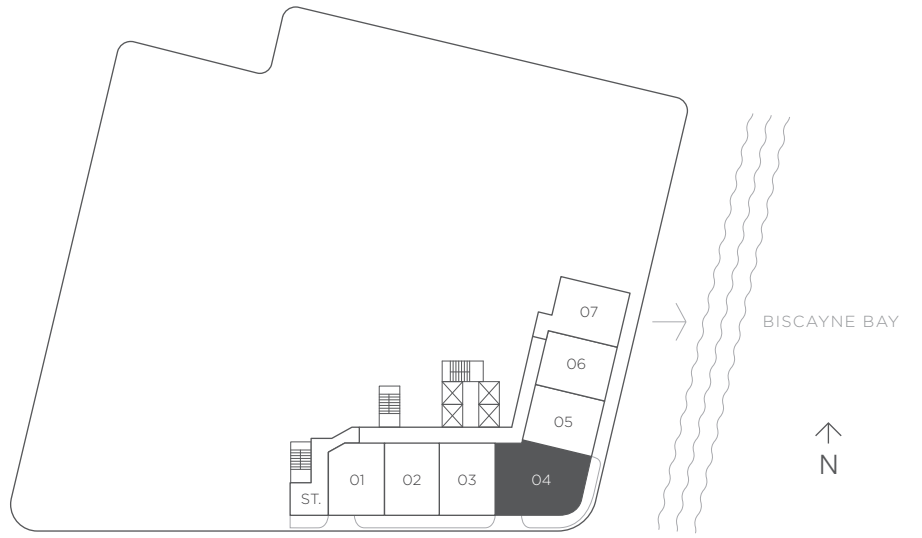
## 2 Bedrooms 2 Baths

**A/C INTERIOR AREA** 1,203 sq ft / 111.76 sq m

**TERRACE AREA (O4A)** 325 sq ft / 30.19 sq m

**TOTAL RESIDENCE** 1,528 sq ft / 141.95 sq m

FLOORS 2 - 6



Each purchaser is advised that there are various methods for calculating the square footage of a Unit, and that depending on the method of calculation, the quoted square footage of a Unit in advertising materials may vary from the square footage of a Unit as stated or described in the Prospectus and the Declaration. The dimensions of the Unit shown in these floor plans have been calculated from the exterior boundaries of the exterior walls to the centerline of interior demising walls, including common elements such as structural walls and other interior structural components of the building and in fact vary from the dimensions that would be determined by using the description and definition of the "Unit" set forth in the Prospectus and the Declaration. For your reference, the area of the Unit, determined in accordance with Unit boundaries as defined in the Prospectus and the Declaration is less than the square footage reflected here. The configuration and use of space or the floor plan design may vary from that in the Prospectus and Declaration because the Developer has reserved the right in the Prospectus to make design, dimension, specification, and plan changes at any time, in the Developer's discretion, without notice to Unit buyers. Note that measurements of rooms set forth on this floor plan are generally taken at the greatest points of each given room (as if the room were a perfect rectangle), without regard for any cutouts. Accordingly, the area of the actual room will typically be smaller than the product obtained by multiplying the stated length times width. All dimensions are approximate and may vary with actual construction, and all floor plans and development plans are subject to change. The furnishings and décor illustrated are not included with the purchase of the Unit. See Prospectus for additional information regarding what is offered with the Unit and the calculation of Unit square footage and dimensions.

# RESIDENCE 04

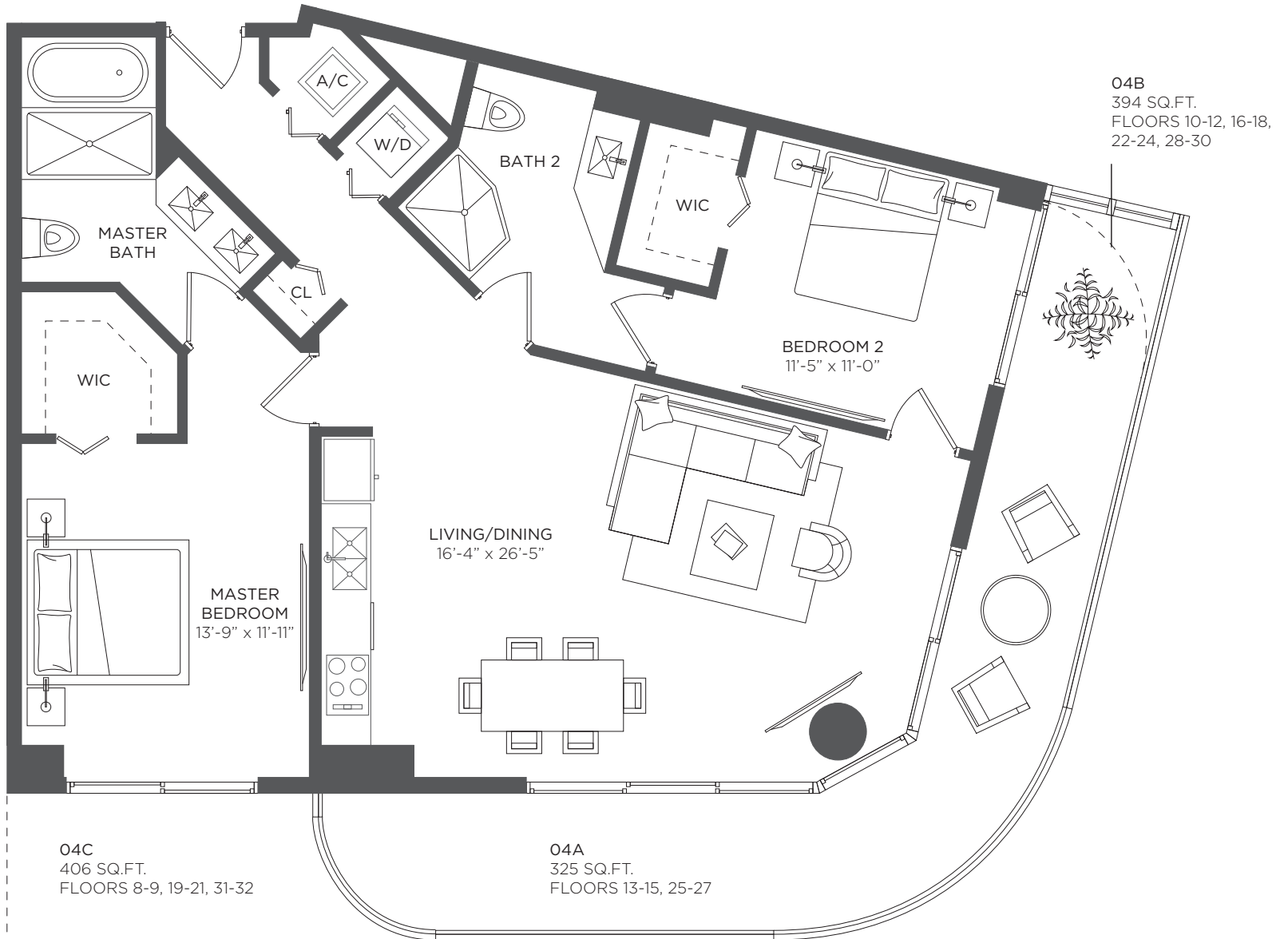
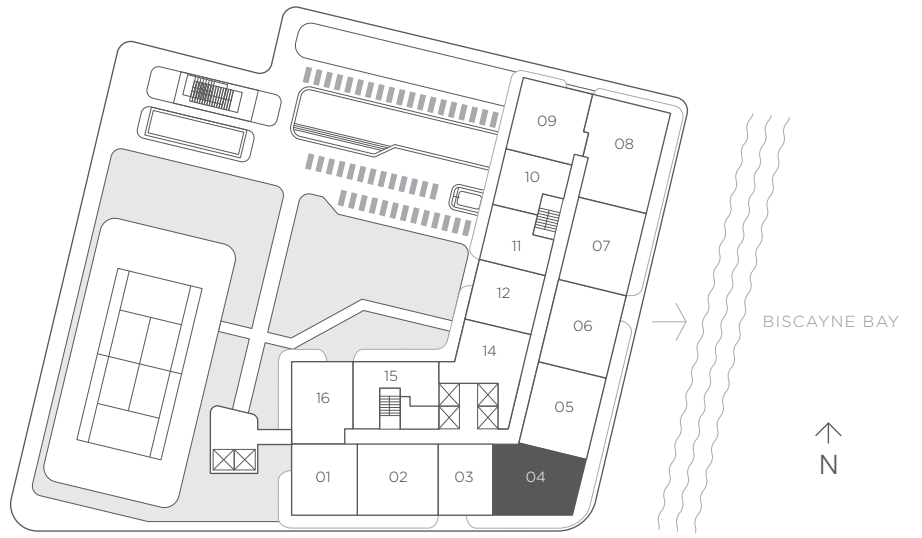
## 2 Bedrooms 2 Baths

**A/C INTERIOR AREA** 1,203 sq ft / 111.76 sq m

**TERRACE AREA (O4A)** 325 sq ft / 30.19 sq m

**TOTAL RESIDENCE** 1,528 sq ft / 141.95 sq m

FLOORS 8 - 32





# RESIDENCE 05

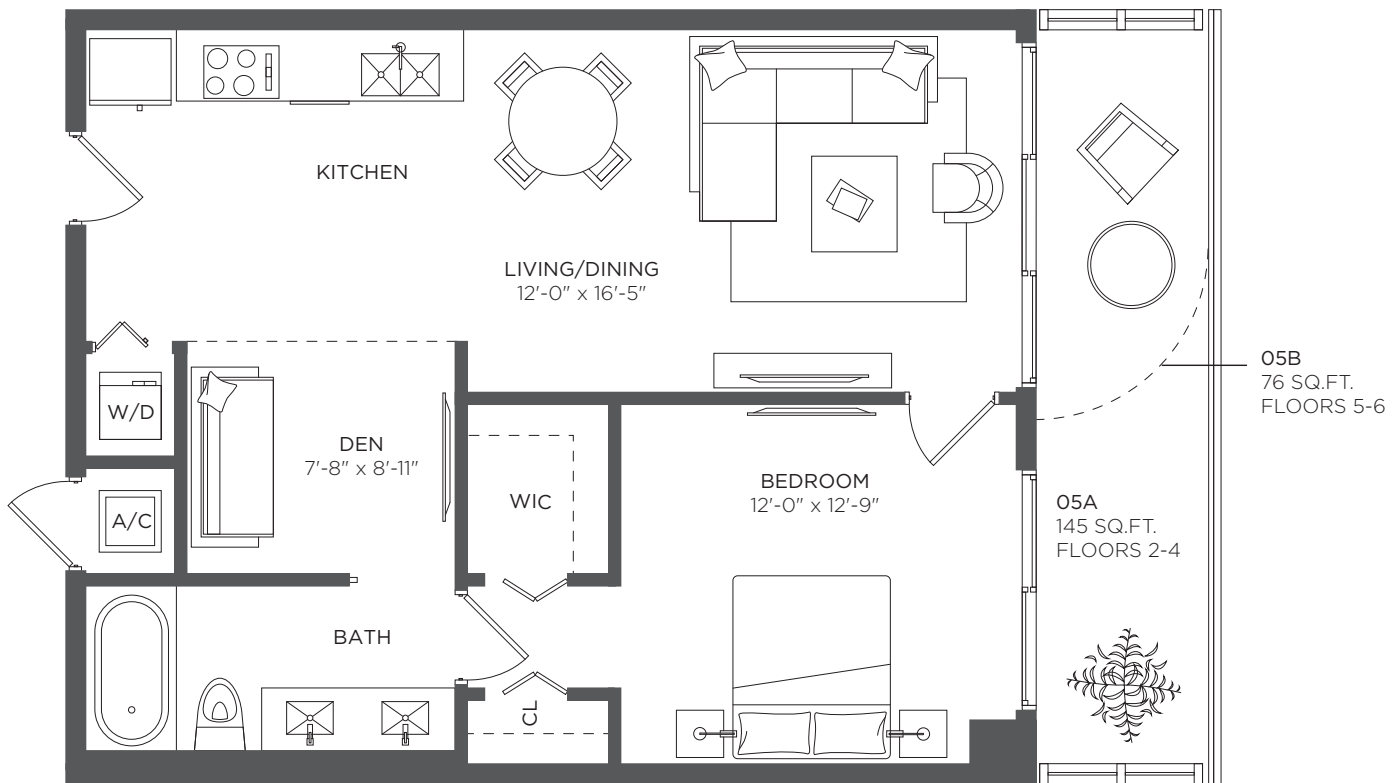
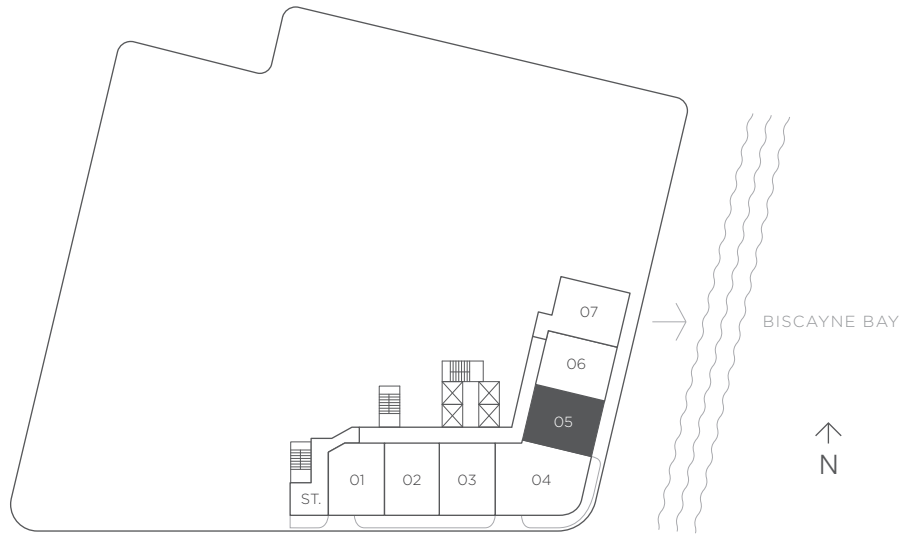
## 1 Bedroom 1 Bath + Den

**A/C INTERIOR AREA** 782 sq ft / 72.65 sq m

**TERRACE AREA (O5A)** 145 sq ft / 13.47 sq m

**TOTAL RESIDENCE** 927 sq ft / 86.12 sq m

FLOORS 2 - 6



# RESIDENCE 05

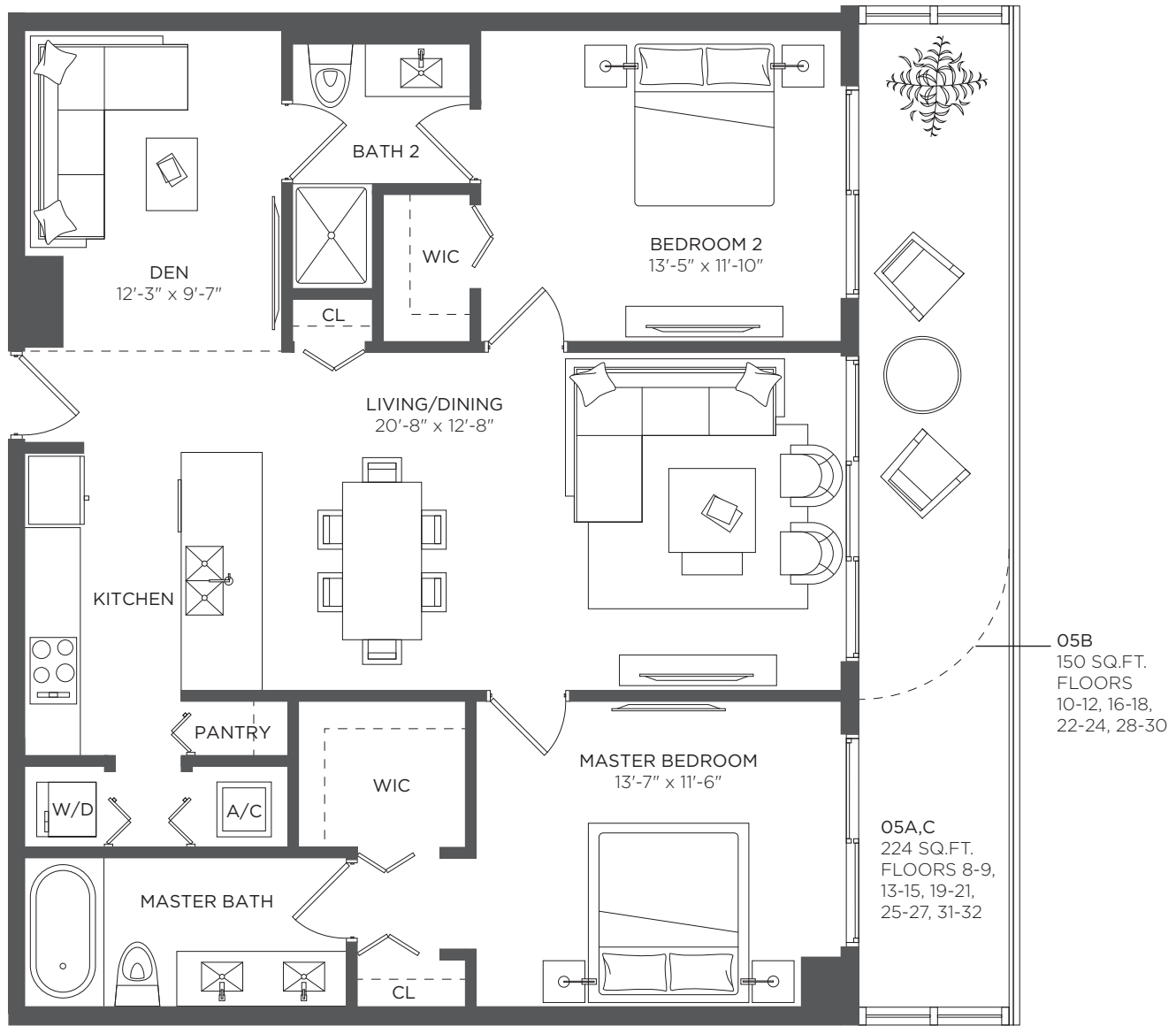
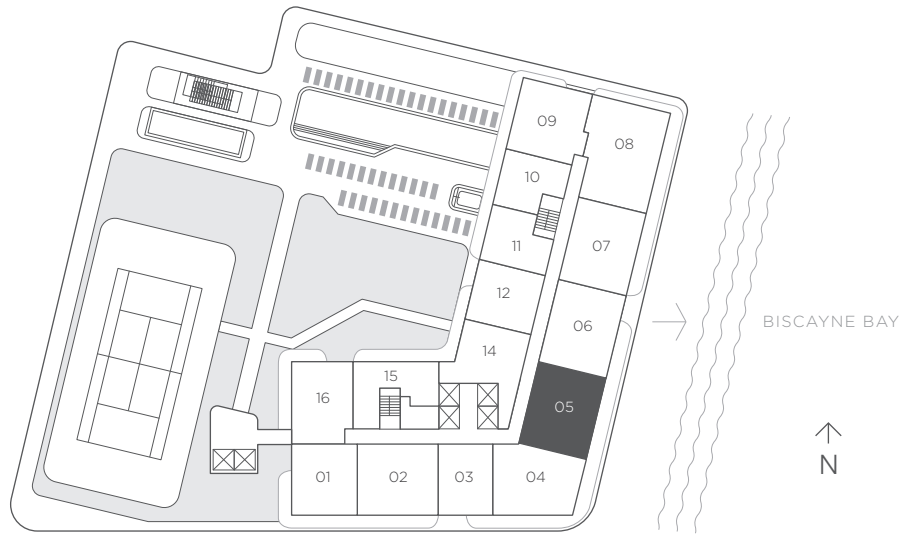
## 2 Bedrooms 2 Baths + Den

A/C INTERIOR AREA 1,205 sq ft / 111.94 sq m

TERRACE AREA (05A) 224 sq ft / 20.81 sq m

TOTAL RESIDENCE 1,429 sq ft / 132.75 sq m

FLOORS 8 - 32



Each purchaser is advised that there are various methods for calculating the square footage of a Unit, and that depending on the method of calculation, the quoted square footage of a Unit in advertising materials may vary from the square footage of a Unit as stated or described in the Prospectus and the Declaration. The dimensions of the Unit shown in these floor plans have been calculated from the exterior boundaries of the exterior walls to the centerline of interior demising walls, including common elements such as structural walls and other interior structural components of the building and in fact vary from the dimensions that would be determined by using the description and definition of the "Unit" set forth in the Prospectus and the Declaration. For your reference, the area of the Unit, determined in accordance with Unit boundaries as defined in the Prospectus and the Declaration is less than the square footage reflected here. The configuration and use of space or the floor plan design may vary from that in the Prospectus and Declaration because the Developer has reserved the right in the Prospectus to make design, dimension, specification, and plan changes at any time, in the Developer's discretion, without notice to Unit buyers. Note that measurements of rooms set forth on this floor plan are generally taken at the greatest points of each given room (as if the room were a perfect rectangle), without regard for any cutouts. Accordingly, the area of the actual room will typically be smaller than the product obtained by multiplying the stated length times width. All dimensions are approximate and may vary with actual construction, and all floor plans and development plans are subject to change. The furnishings and décor illustrated are not included with the purchase of the Unit. See Prospectus for additional information regarding what is offered with the Unit and the calculation of Unit square footage and dimensions.

# RESIDENCE 06

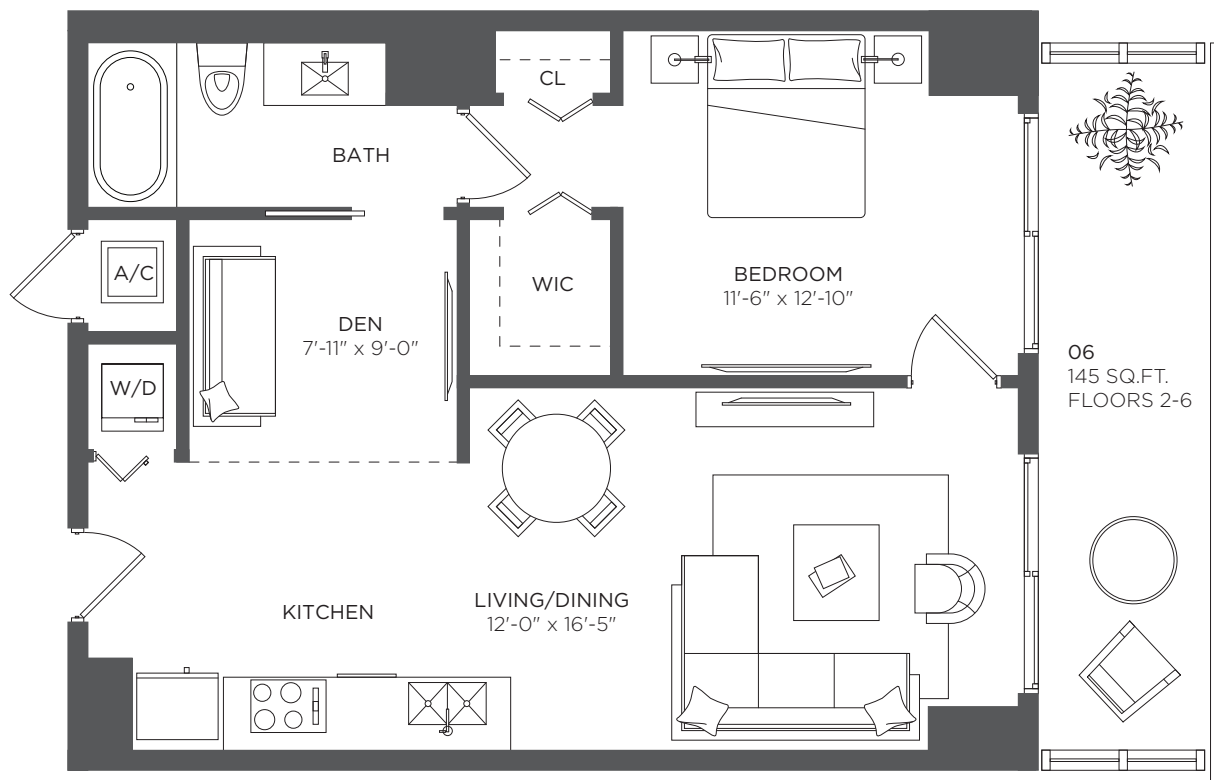
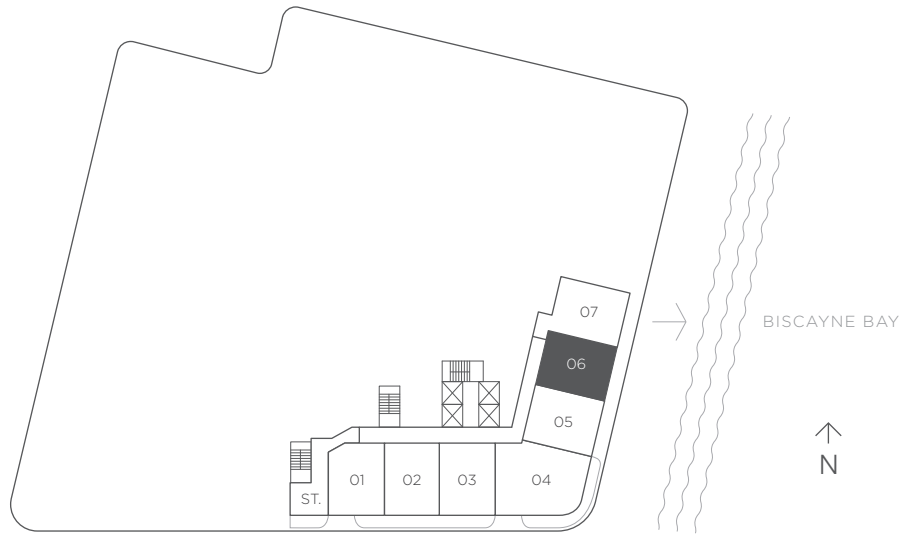
## 1 Bedroom 1 Bath + Den

A/C INTERIOR AREA 782 sq ft / 72.65 sq m

TERRACE AREA (05B) 145 sq ft / 13.47 sq m

TOTAL RESIDENCE 927 sq ft / 86.12 sq m

FLOORS 2 - 6



# RESIDENCE 06

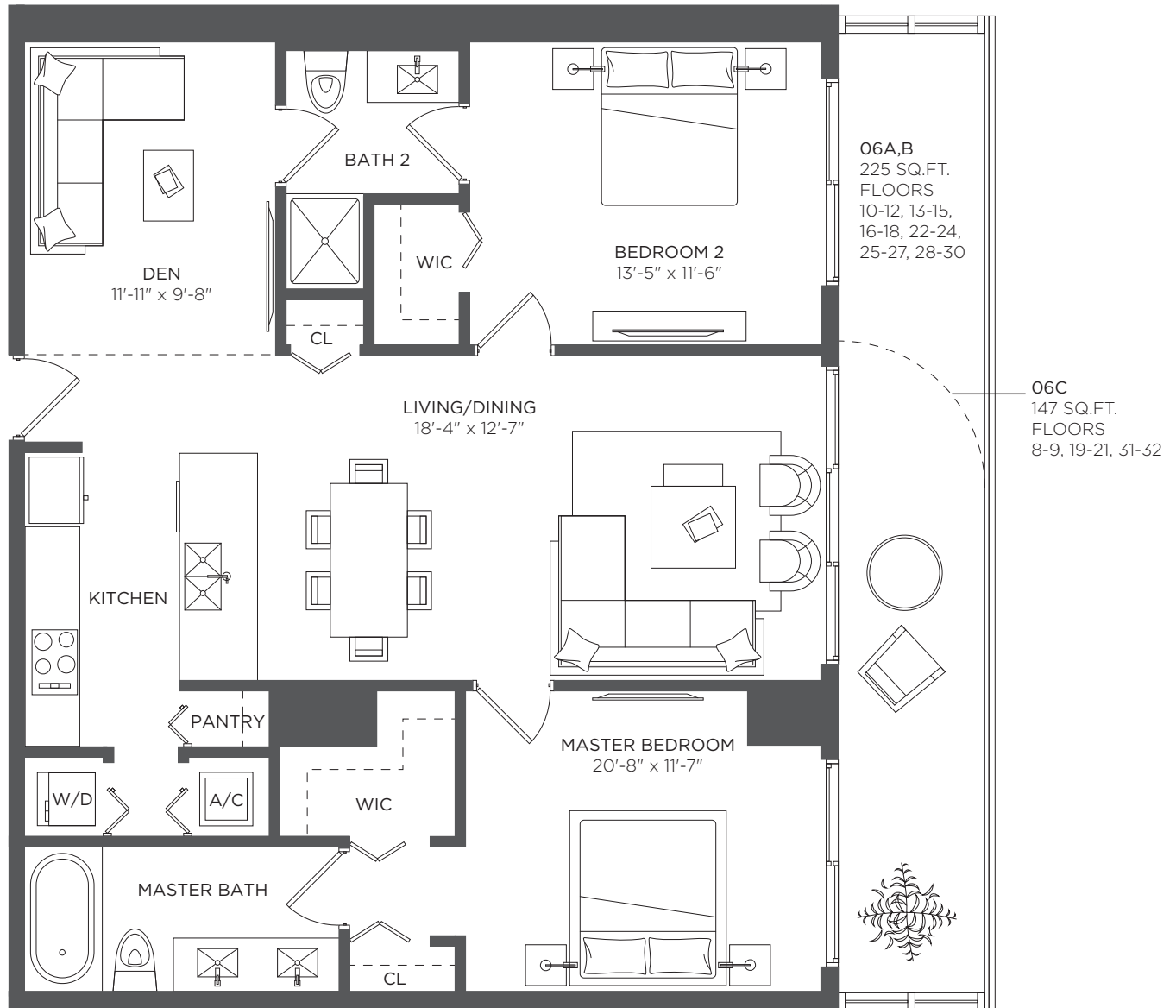
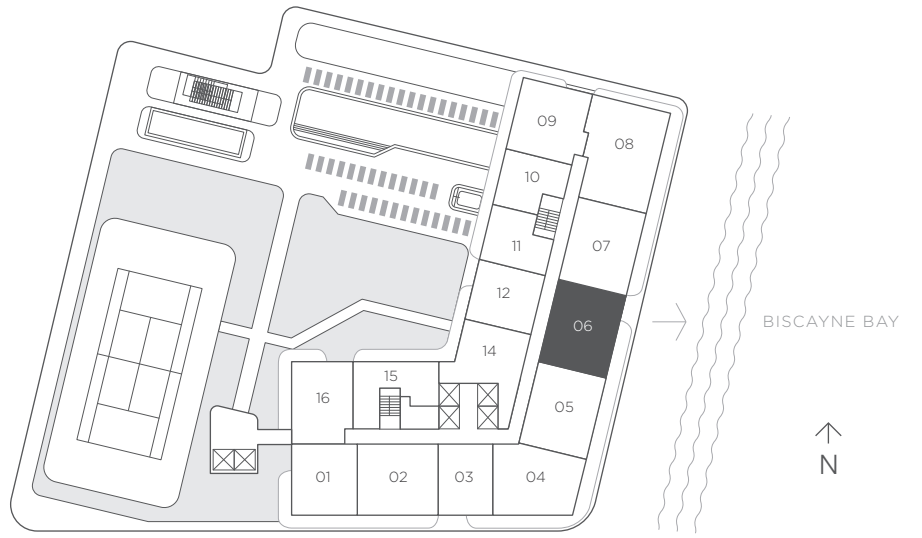
## 2 Bedrooms 2 Baths + Den

A/C INTERIOR AREA 1,212 sq ft / 112.59 sq m

TERRACE AREA (05A) 225 sq ft / 20.90 sq m

TOTAL RESIDENCE 1,437 sq ft / 133.49 sq m

FLOORS 8 - 32



# RESIDENCE 07

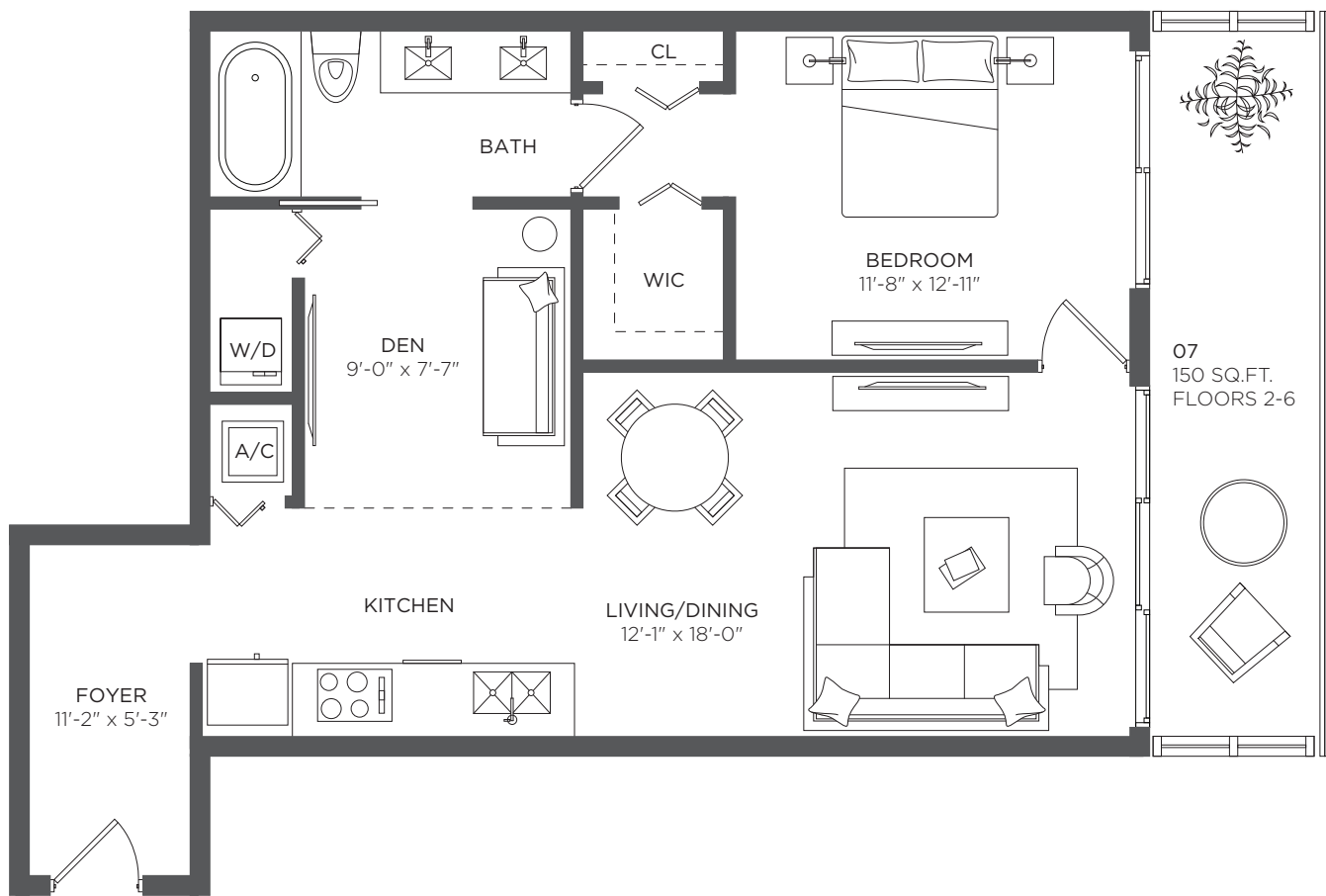
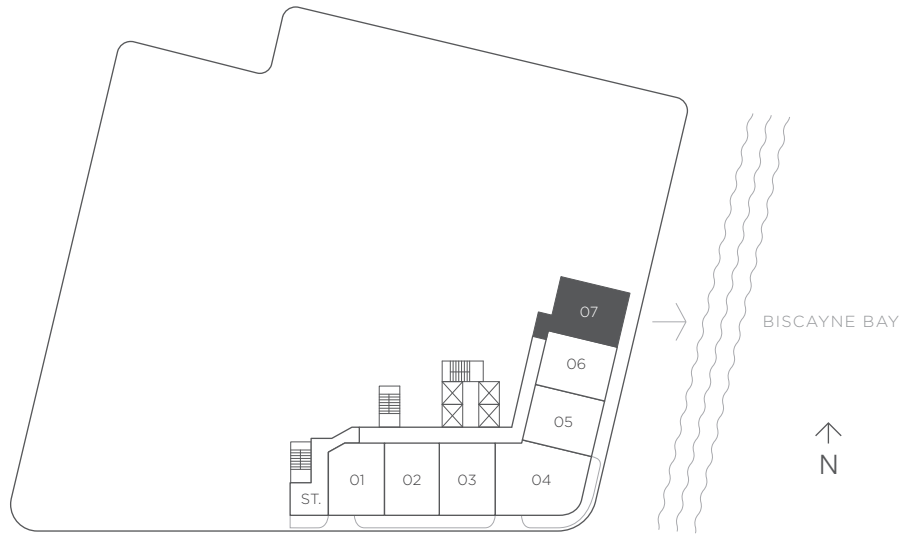
## 1 Bedroom 1 Bath + Den

A/C INTERIOR AREA 888 sq ft / 82.52 sq m

TERRACE AREA (O5C) 150 sq ft / 13.94 sq m

TOTAL RESIDENCE 1,038 sq ft / 96.46 sq m

FLOORS 2 - 6



Each purchaser is advised that there are various methods for calculating the square footage of a Unit, and that depending on the method of calculation, the quoted square footage of a Unit in advertising materials may vary from the square footage of a Unit as stated or described in the Prospectus and the Declaration. The dimensions of the Unit shown in these floor plans have been calculated from the exterior boundaries of the exterior walls to the centerline of interior demising walls, including common elements such as structural walls and other interior structural components of the building and in fact vary from the dimensions that would be determined by using the description and definition of the "Unit" set forth in the Prospectus and the Declaration. For your reference, the area of the Unit, determined in accordance with Unit boundaries as defined in the Prospectus and the Declaration is less than the square footage reflected here. The configuration and use of space or the floor plan design may vary from that in the Prospectus and Declaration because the Developer has reserved the right in the Prospectus to make design, dimension, specification, and plan changes at any time, in the Developer's discretion, without notice to Unit buyers. Note that measurements of rooms set forth on this floor plan are generally taken at the greatest points of each given room (as if the room were a perfect rectangle), without regard for any cutouts. Accordingly, the area of the actual room will typically be smaller than the product obtained by multiplying the stated length times width. All dimensions are approximate and may vary with actual construction, and all floor plans and development plans are subject to change. The furnishings and décor illustrated are not included with the purchase of the Unit. See Prospectus for additional information regarding what is offered with the Unit and the calculation of Unit square footage and dimensions.

# RESIDENCE 07

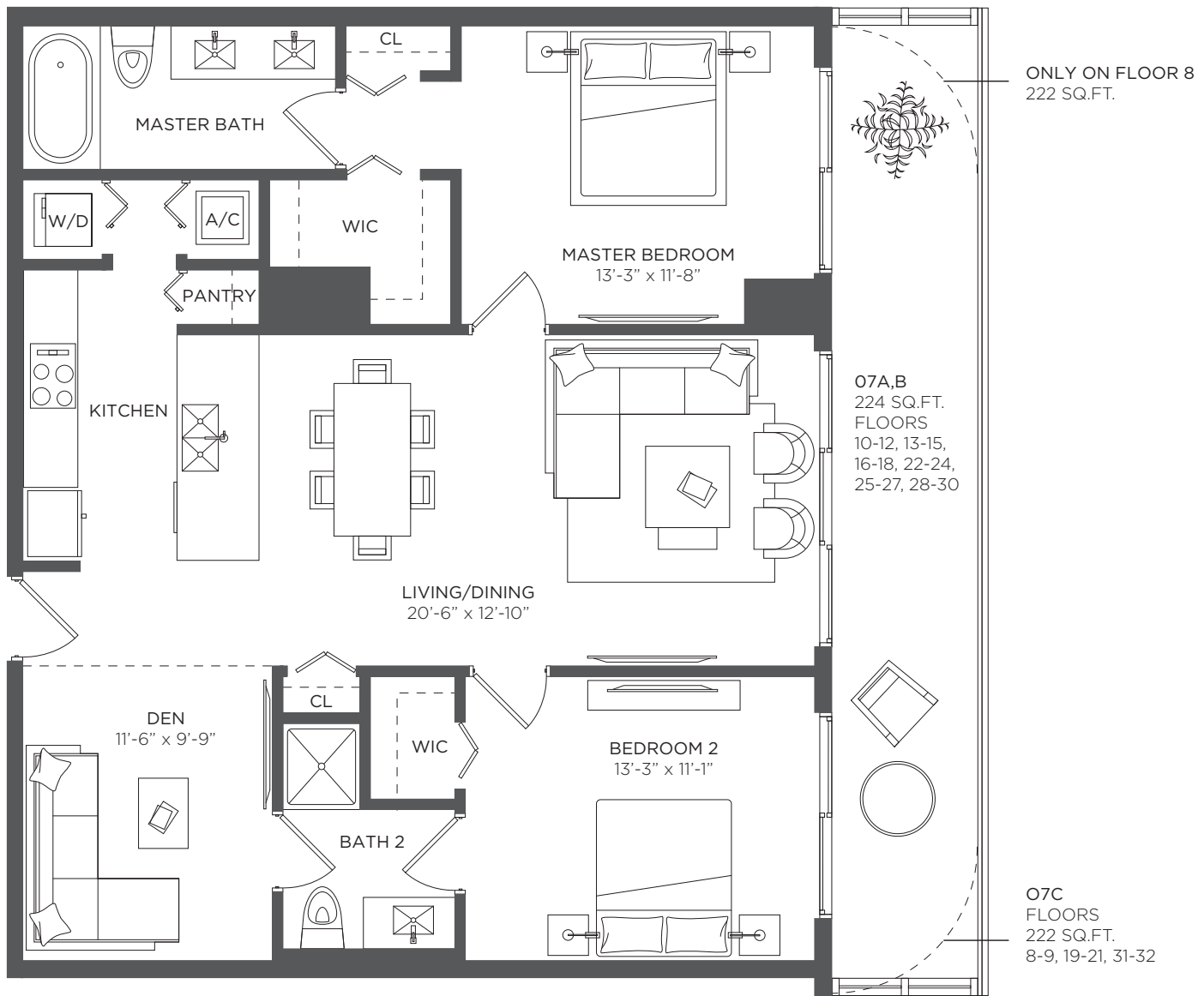
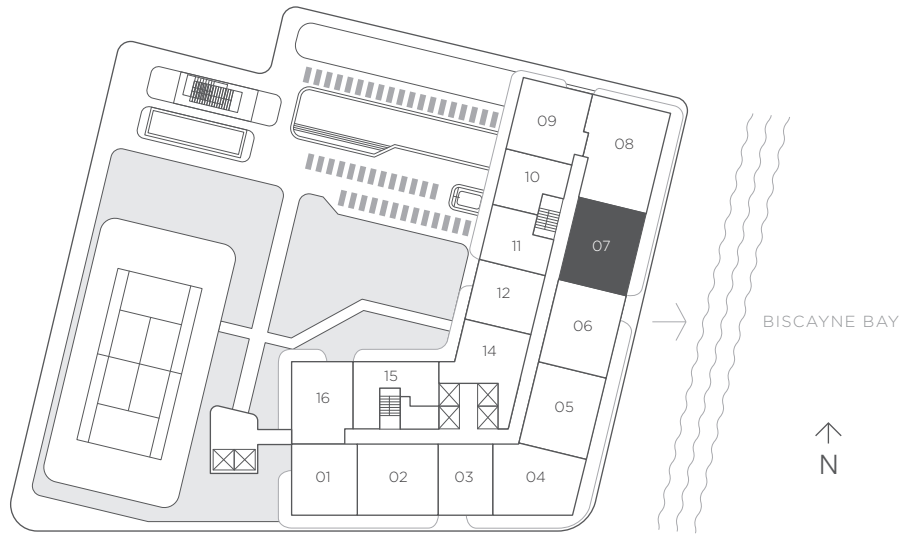
## 2 Bedrooms 2 Baths + Den

A/C INTERIOR AREA 1,198 sq ft / 111.29 sq m

TERRACE AREA (05A) 224 sq ft / 20.81 sq m

TOTAL RESIDENCE 1,422 sq ft / 132.10 sq m

FLOORS 8 - 32



Each purchaser is advised that there are various methods for calculating the square footage of a Unit, and that depending on the method of calculation, the quoted square footage of a Unit in advertising materials may vary from the square footage of a Unit as stated or described in the Prospectus and the Declaration. The dimensions of the Unit shown in these floor plans have been calculated from the exterior boundaries of the exterior walls to the centerline of interior demising walls, including common elements such as structural walls and other interior structural components of the building and in fact vary from the dimensions that would be determined by using the description and definition of the "Unit" set forth in the Prospectus and the Declaration. For your reference, the area of the Unit, determined in accordance with Unit boundaries as defined in the Prospectus and the Declaration is less than the square footage reflected here. The configuration and use of space or the floor plan design may vary from that in the Prospectus and Declaration because the Developer has reserved the right in the Prospectus to make design, dimension, specification, and plan changes at any time, in the Developer's discretion, without notice to Unit buyers. Note that measurements of rooms set forth on this floor plan are generally taken at the greatest points of each given room (as if the room were a perfect rectangle), without regard for any cutouts. Accordingly, the area of the actual room will typically be smaller than the product obtained by multiplying the stated length times width. All dimensions are approximate and may vary with actual construction, and all floor plans and development plans are subject to change. The furnishings and décor illustrated are not included with the purchase of the Unit. See Prospectus for additional information regarding what is offered with the Unit and the calculation of Unit square footage and dimensions.

# RESIDENCE 08

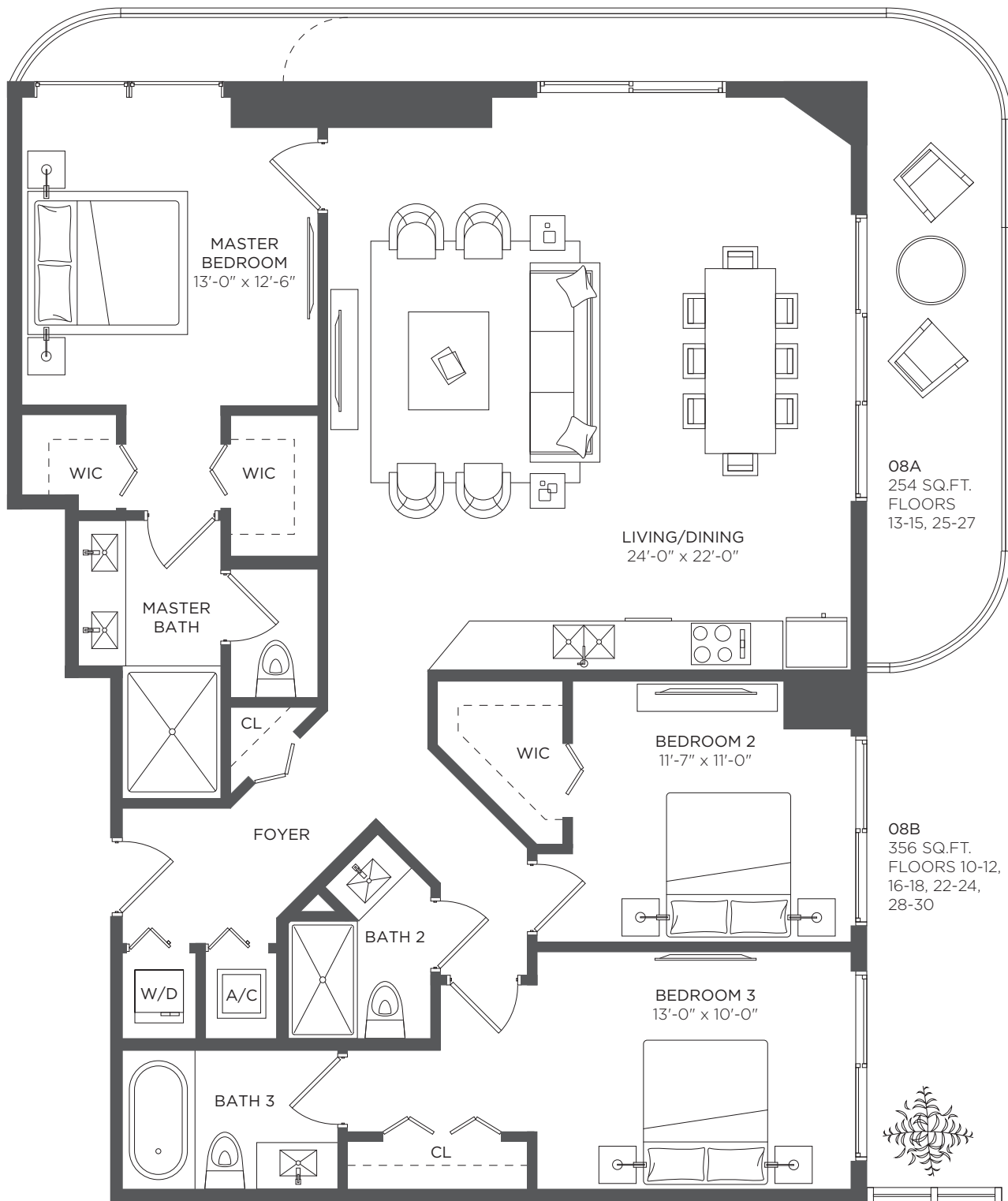
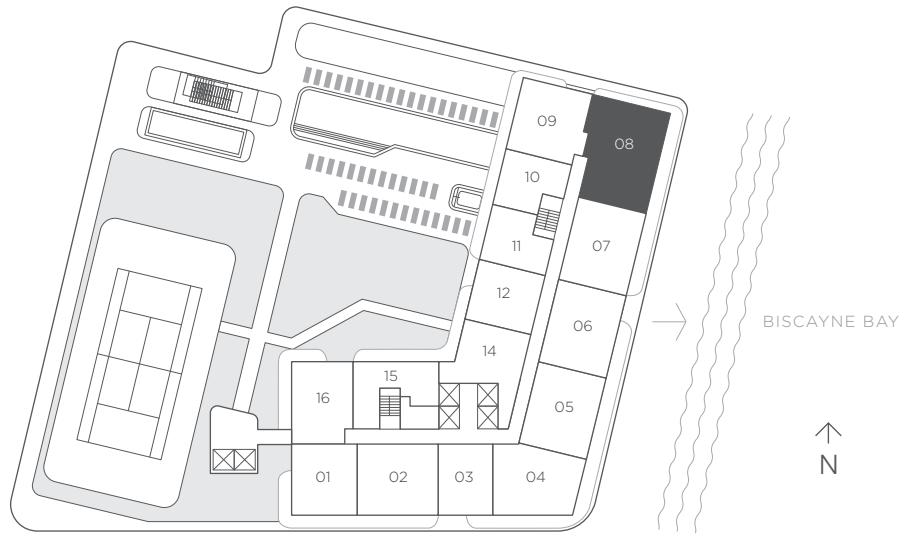
## 3 Bedrooms 3 Baths

**A/C INTERIOR AREA** 1,596 sq ft / 148.27 sq m

**TERRACE AREA (06A)** 254 sq ft / 23.59 sq m

**TOTAL RESIDENCE** 1,850 sq ft / 171.86 sq m

FLOORS 8 - 32



Each purchaser is advised that there are various methods for calculating the square footage of a Unit, and that depending on the method of calculation, the quoted square footage of a Unit in advertising materials may vary from the square footage of a Unit as stated or described in the Prospectus and the Declaration. The dimensions of the Unit shown in these floor plans have been calculated from the exterior boundaries of the exterior walls to the centerline of interior demising walls, including common elements such as structural walls and other interior structural components of the building and in fact vary from the dimensions that would be determined by using the description and definition of the "Unit" set forth in the Prospectus and the Declaration. For your reference, the area of the Unit, determined in accordance with Unit boundaries as defined in the Prospectus and the Declaration is less than the square footage reflected here. The configuration and use of space or the floor plan design may vary from that in the Prospectus and Declaration because the Developer has reserved the right in the Prospectus to make design, dimension, specification, and plan changes at any time, in the Developer's discretion, without notice to Unit buyers. Note that measurements of rooms set forth on this floor plan are generally taken at the greatest points of each given room (as if the room were a perfect rectangle), without regard for any cutouts. Accordingly, the area of the actual room will typically be smaller than the product obtained by multiplying the stated length times width. All dimensions are approximate and may vary with actual construction, and all floor plans and development plans are subject to change. The furnishings and décor illustrated are not included with the purchase of the Unit. See Prospectus for additional information regarding what is offered with the Unit and the calculation of Unit square footage and dimensions.

# RESIDENCE 09

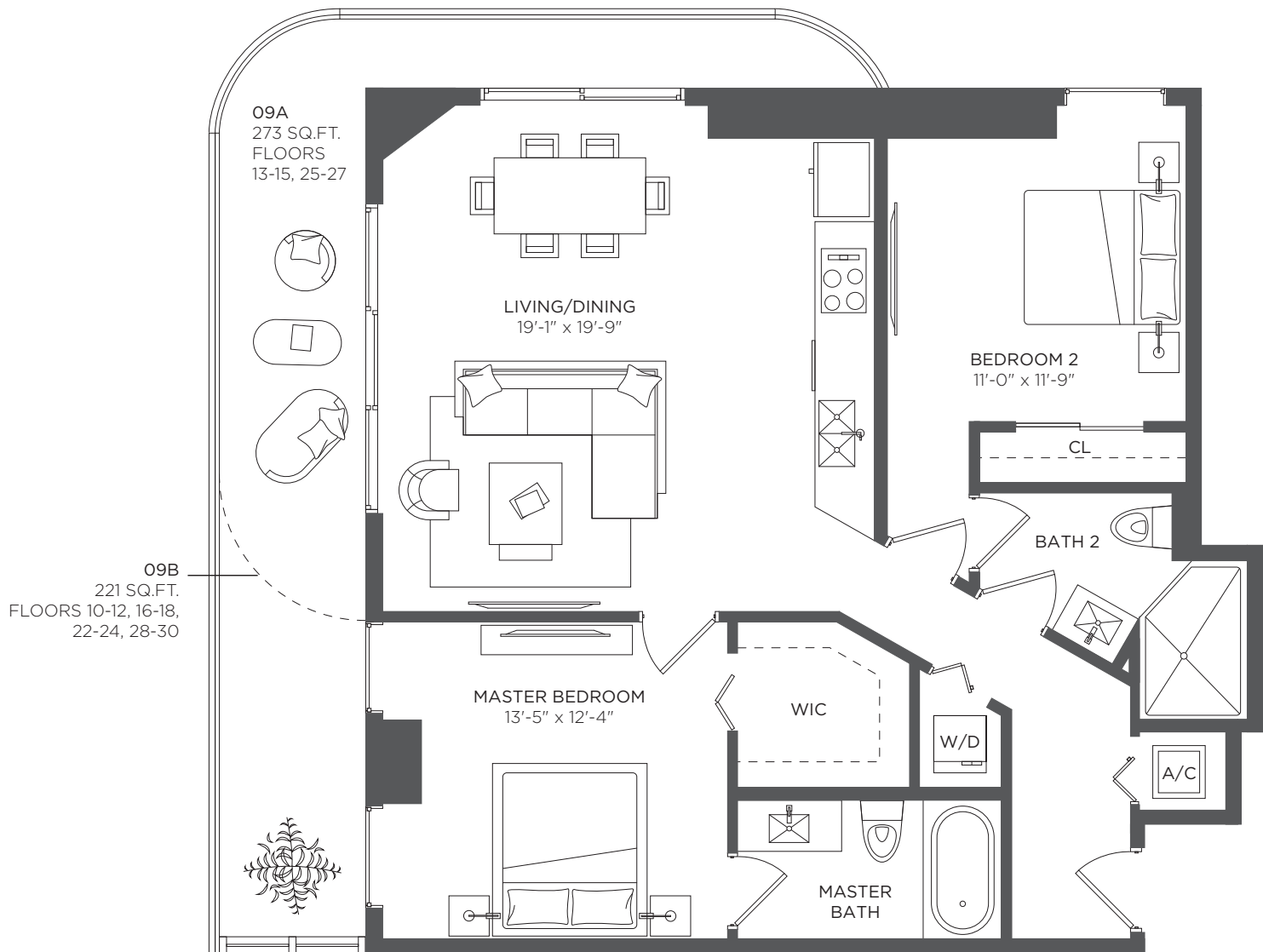
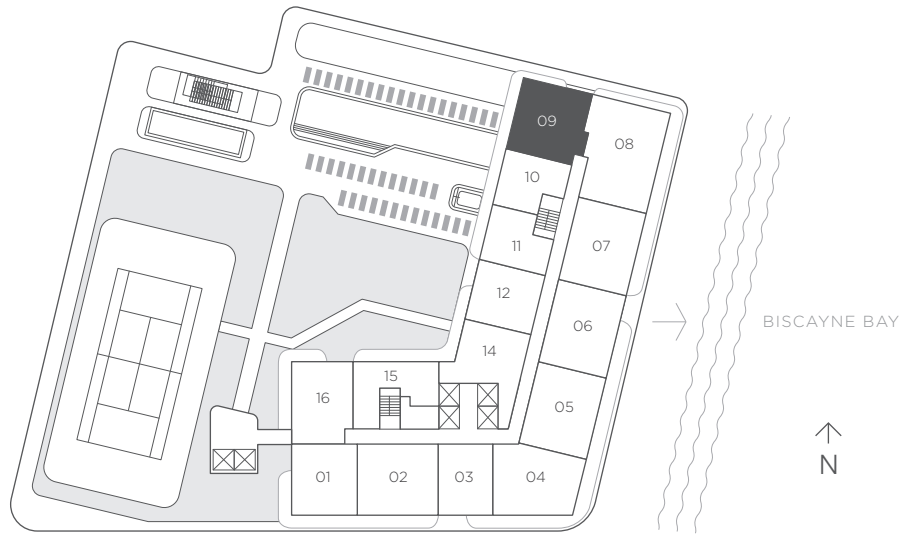
## 2 Bedrooms 2 Baths

**A/C INTERIOR AREA** 1,104 sq ft / 102.60 sq m

**TERRACE AREA (07A)** 273 sq ft / 25.36 sq m

**TOTAL RESIDENCE** 1,377 sq ft / 127.96

FLOORS 8 - 32





# RESIDENCE 10

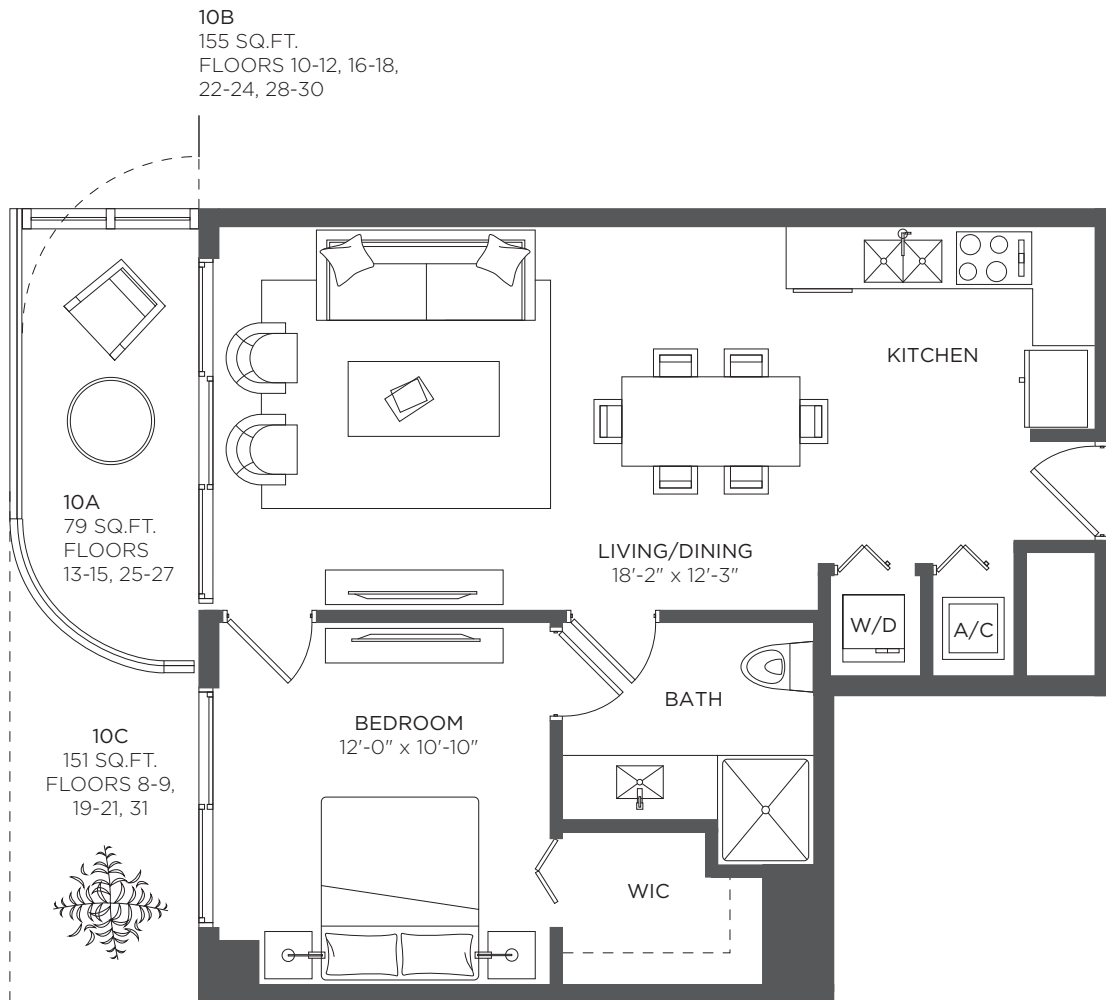
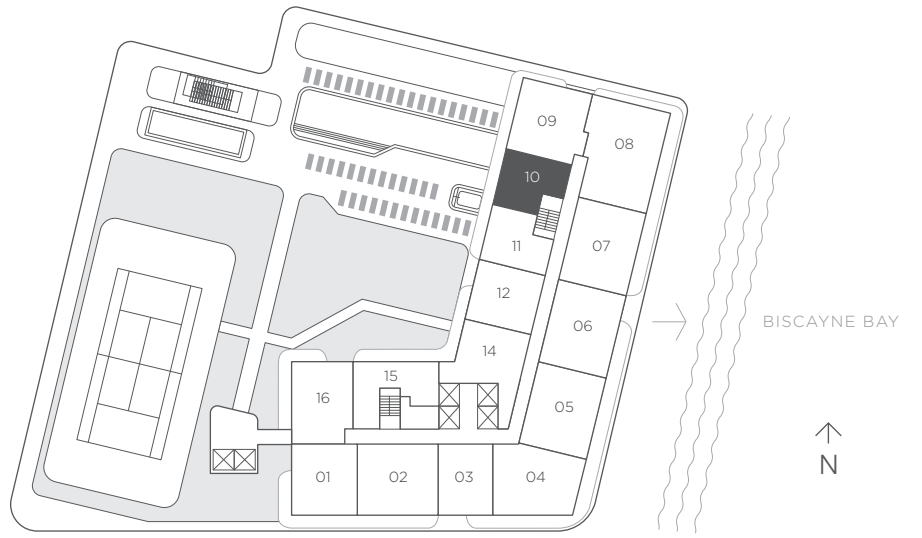
## 1 Bedroom 1 Bath

**A/C INTERIOR AREA** 681 sq ft / 63.26 sq m

**TERRACE AREA (08A)** 79 sq ft / 7.33 sq m

**TOTAL RESIDENCE** 760 sq ft / 70.59 sq m

FLOORS 8 - 32



# RESIDENCE 11

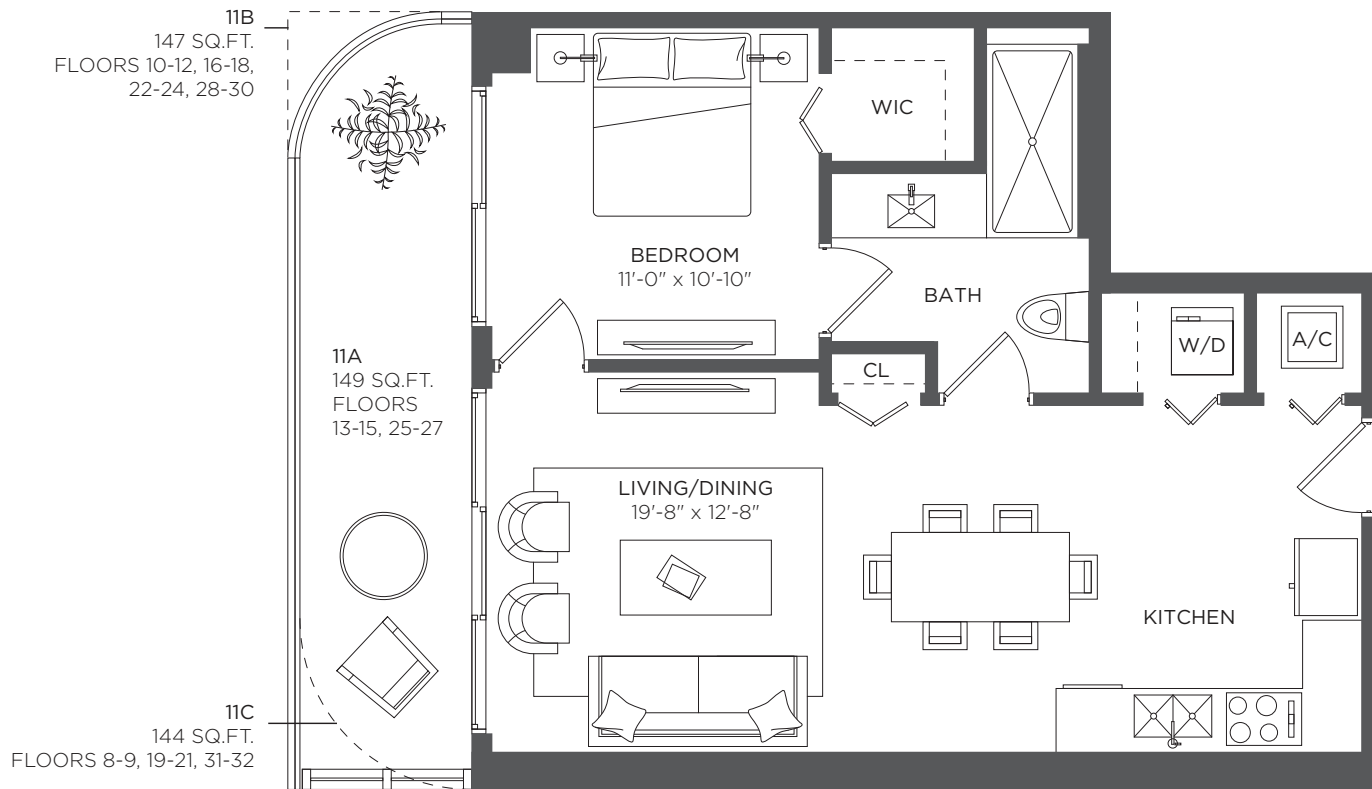
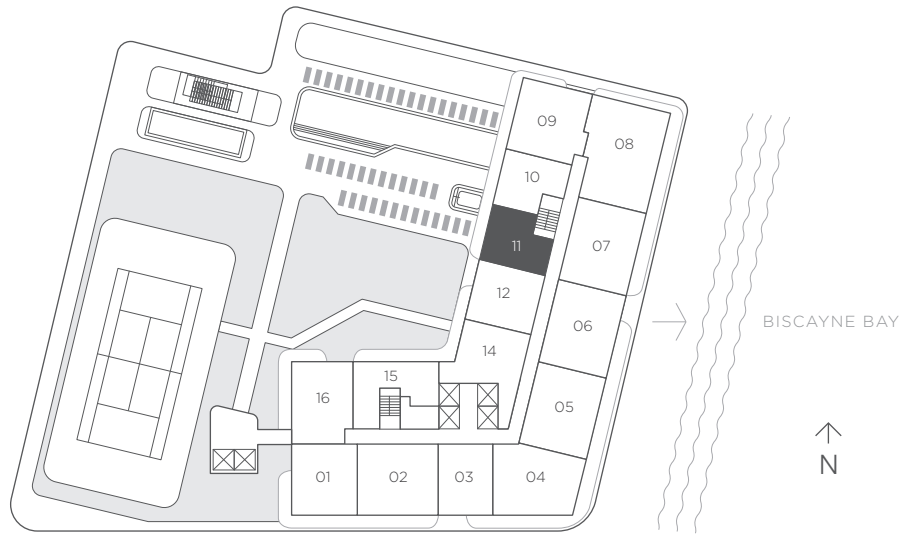
## 1 Bedroom 1 Bath

**A/C INTERIOR AREA** 690 sq ft / 64.10 sq m

**TERRACE AREA (09A)** 149 sq ft / 13.84 sq m

**TOTAL RESIDENCE** 839 sq ft / 77.94 sq m

FLOORS 8 - 32



# RESIDENCE 12

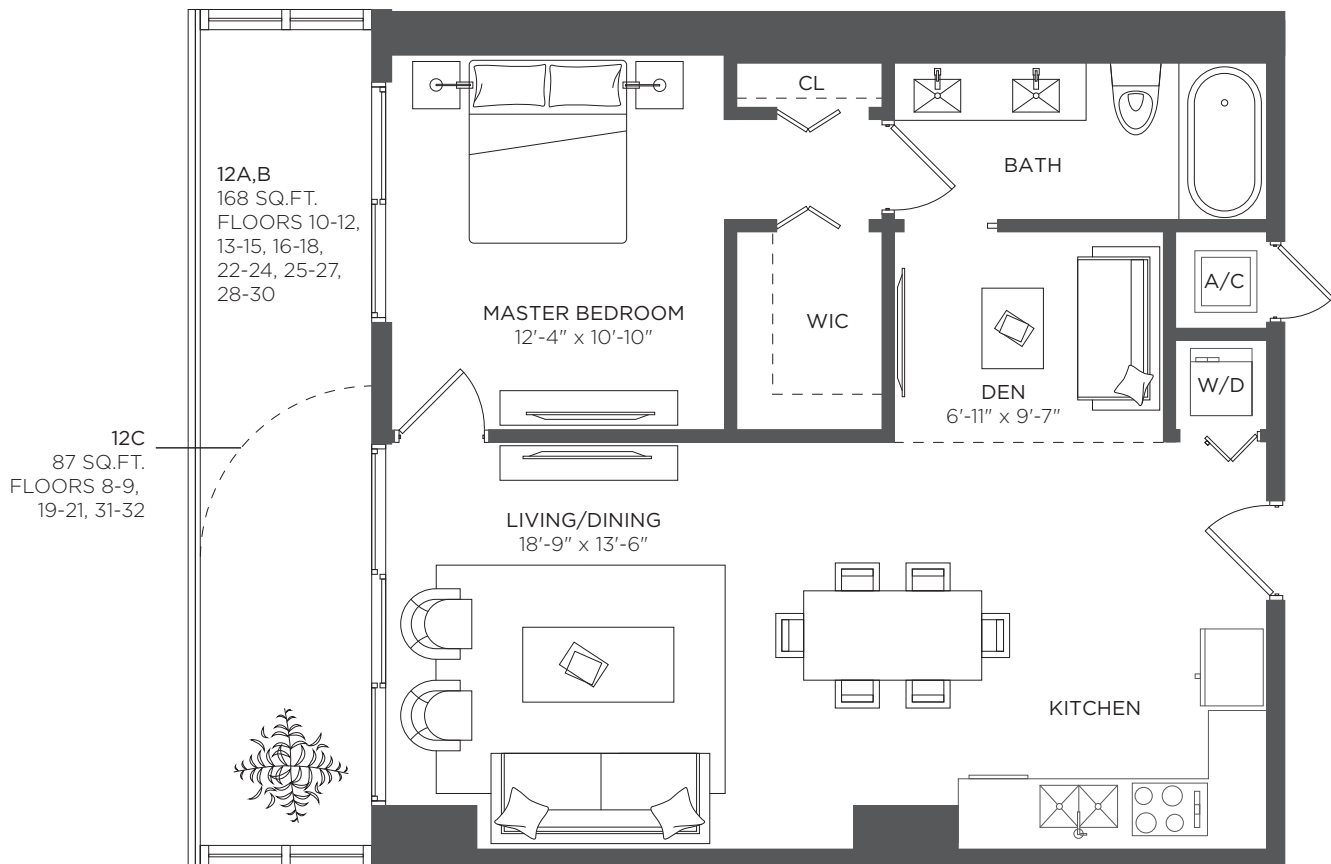
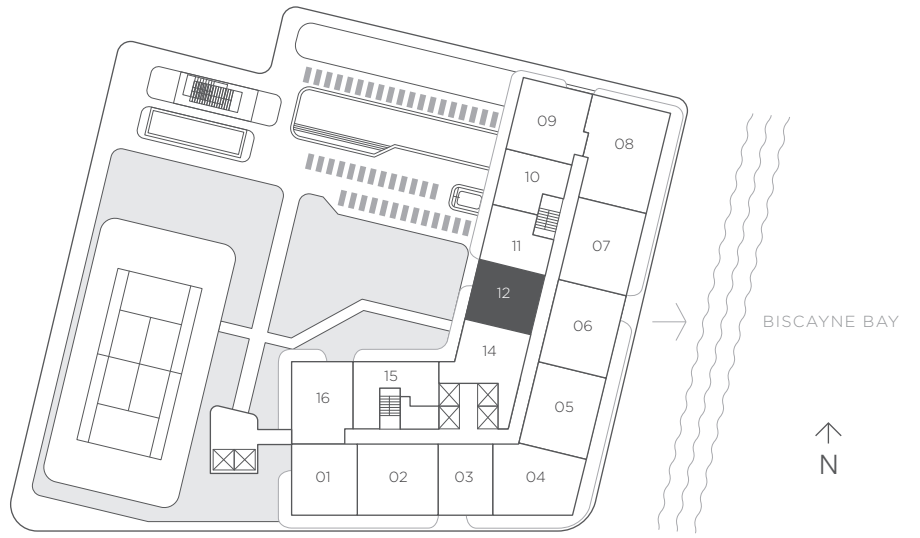
## 1 Bedroom 1 Bath + Den

A/C INTERIOR AREA 845 sq ft / 78.50 sq m

TERRACE AREA (10A) 168 sq ft / 15.60 sq m

TOTAL RESIDENCE 1,013 sq ft / 94.10 sq m

FLOORS 8 - 32



# RESIDENCE 14

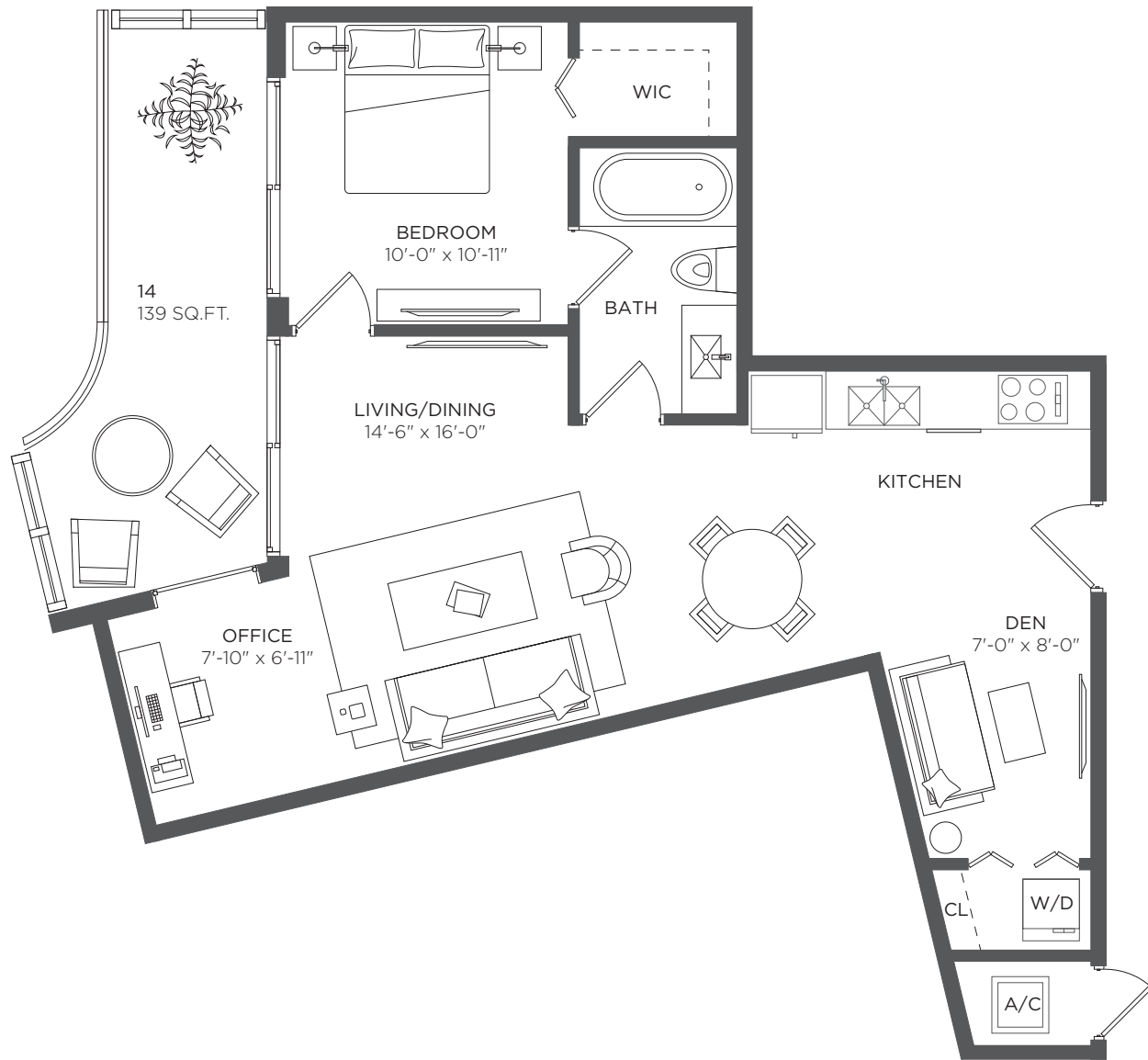
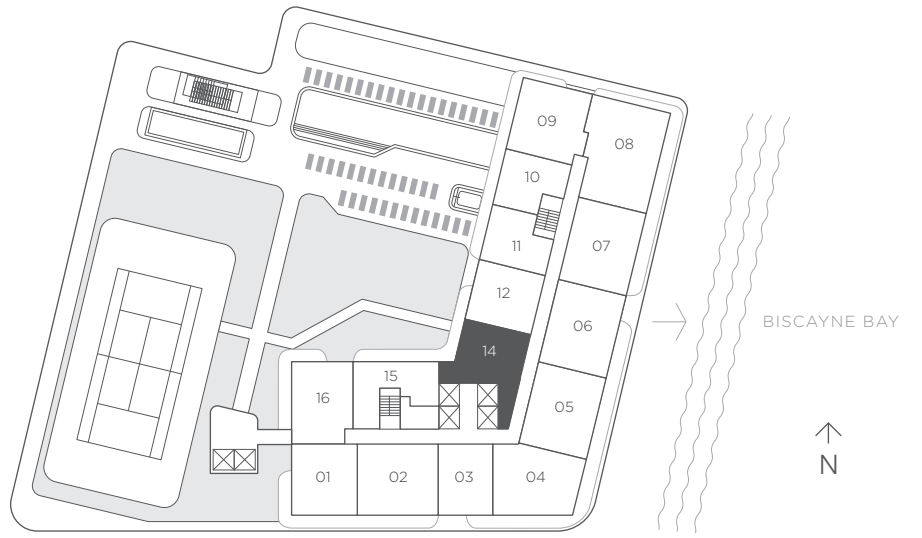
## 1 Bedroom 1 Bath + Den

A/C INTERIOR AREA 838 sq ft / 77.85 sq m

TERRACE AREA (11A) 139 sq ft / 12.91 sq m

TOTAL RESIDENCE 977 sq ft / 90.76 sq m

FLOORS 8 - 32



# RESIDENCE 14

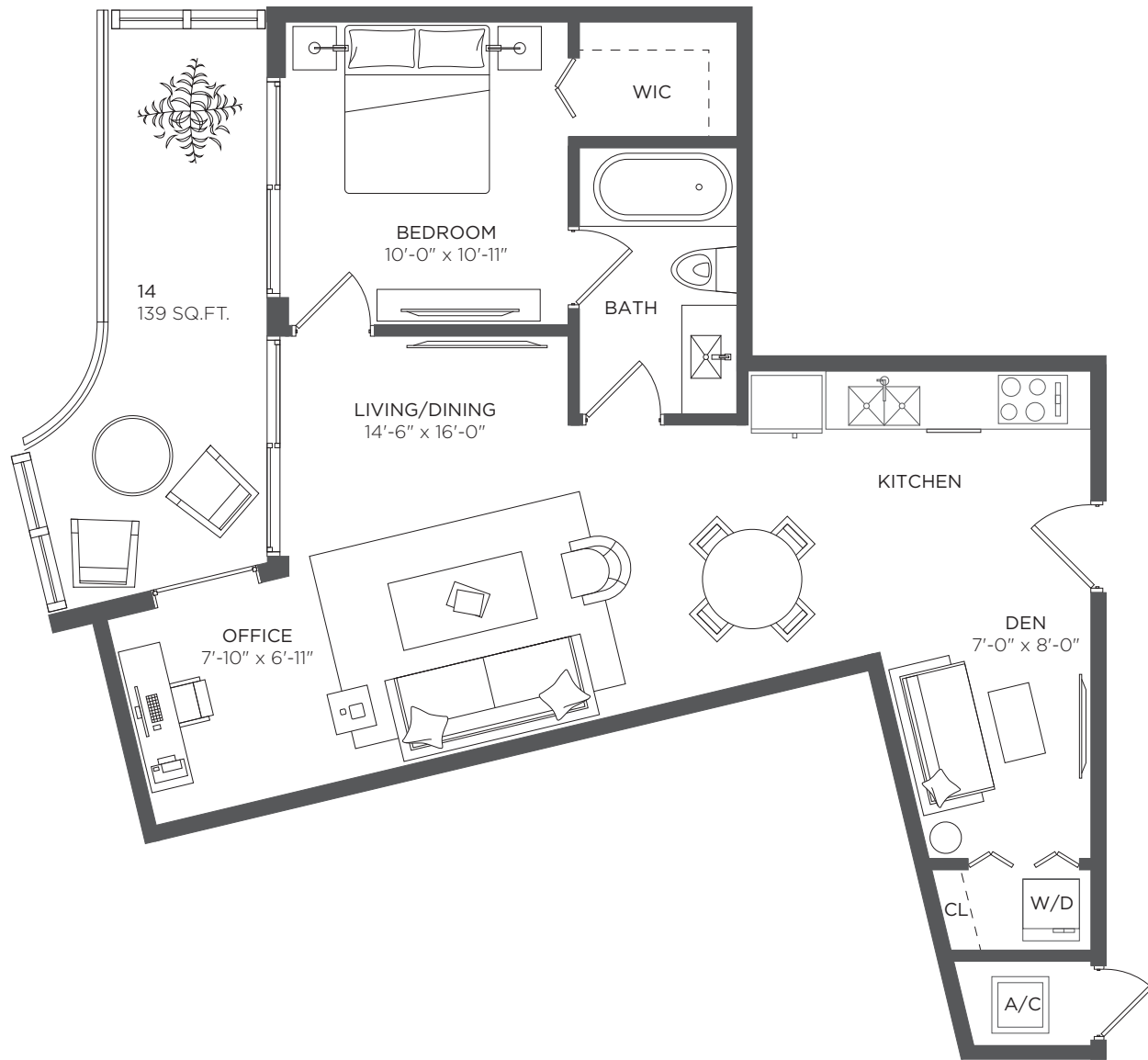
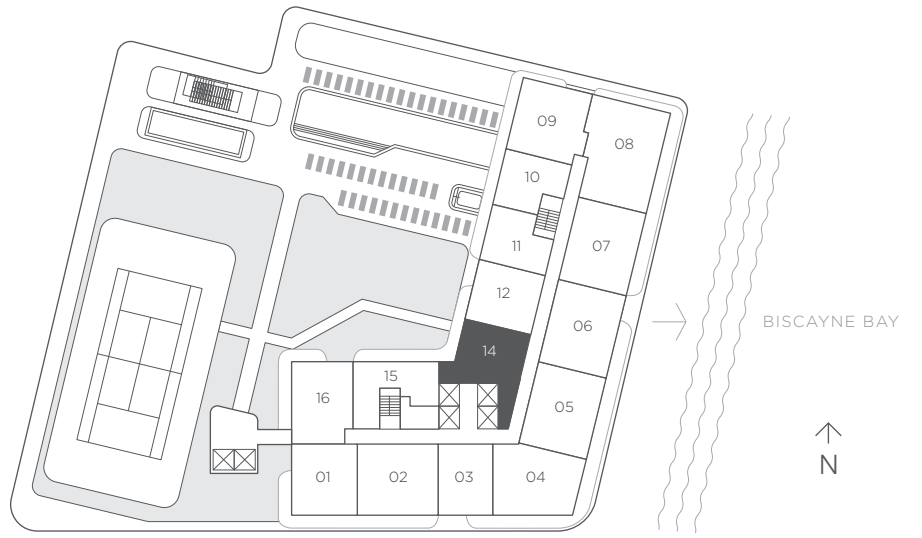
## 1 Bedroom 1 Bath + Den

A/C INTERIOR AREA 838 sq ft / 77.85 sq m

TERRACE AREA (11A) 139 sq ft / 12.91 sq m

TOTAL RESIDENCE 977 sq ft / 90.76 sq m

FLOORS 8 - 32



# RESIDENCE 15

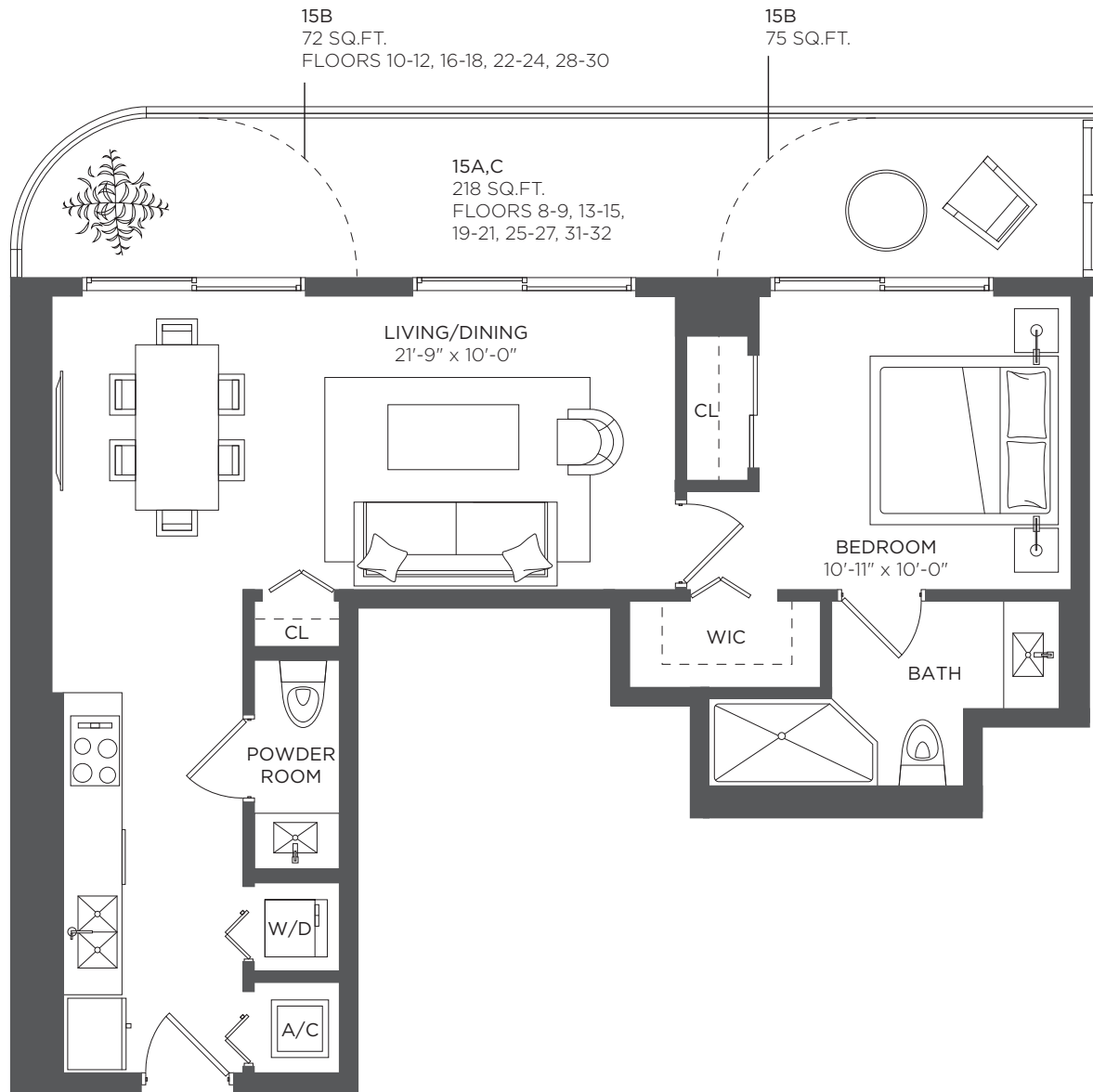
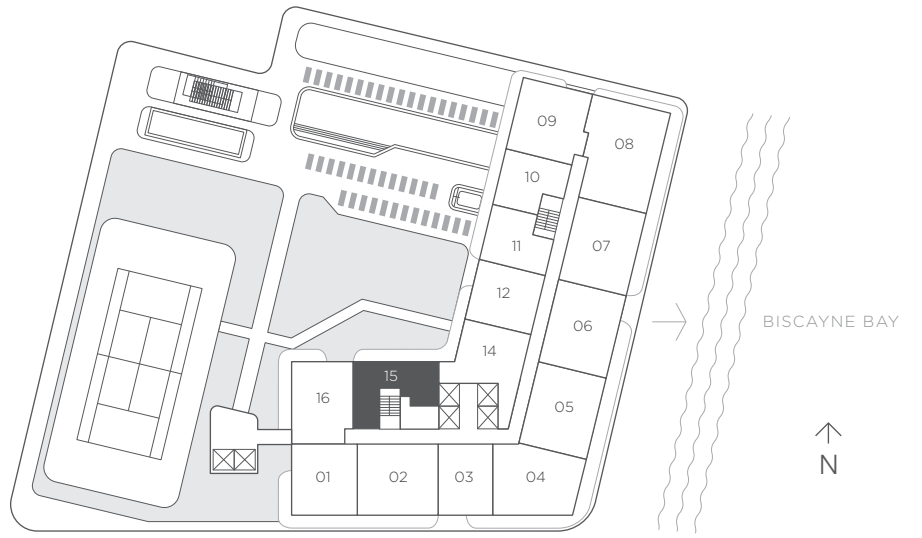
## 1 Bedroom 1.5 Baths

**A/C INTERIOR AREA** 779 sq ft / 72.37 sq m

**TERRACE AREA (12A)** 218 sq ft / 20.25 sq m

**TOTAL RESIDENCE** 997 sq ft / 92.62 sq m

FLOORS 8 - 32



# RESIDENCE 16

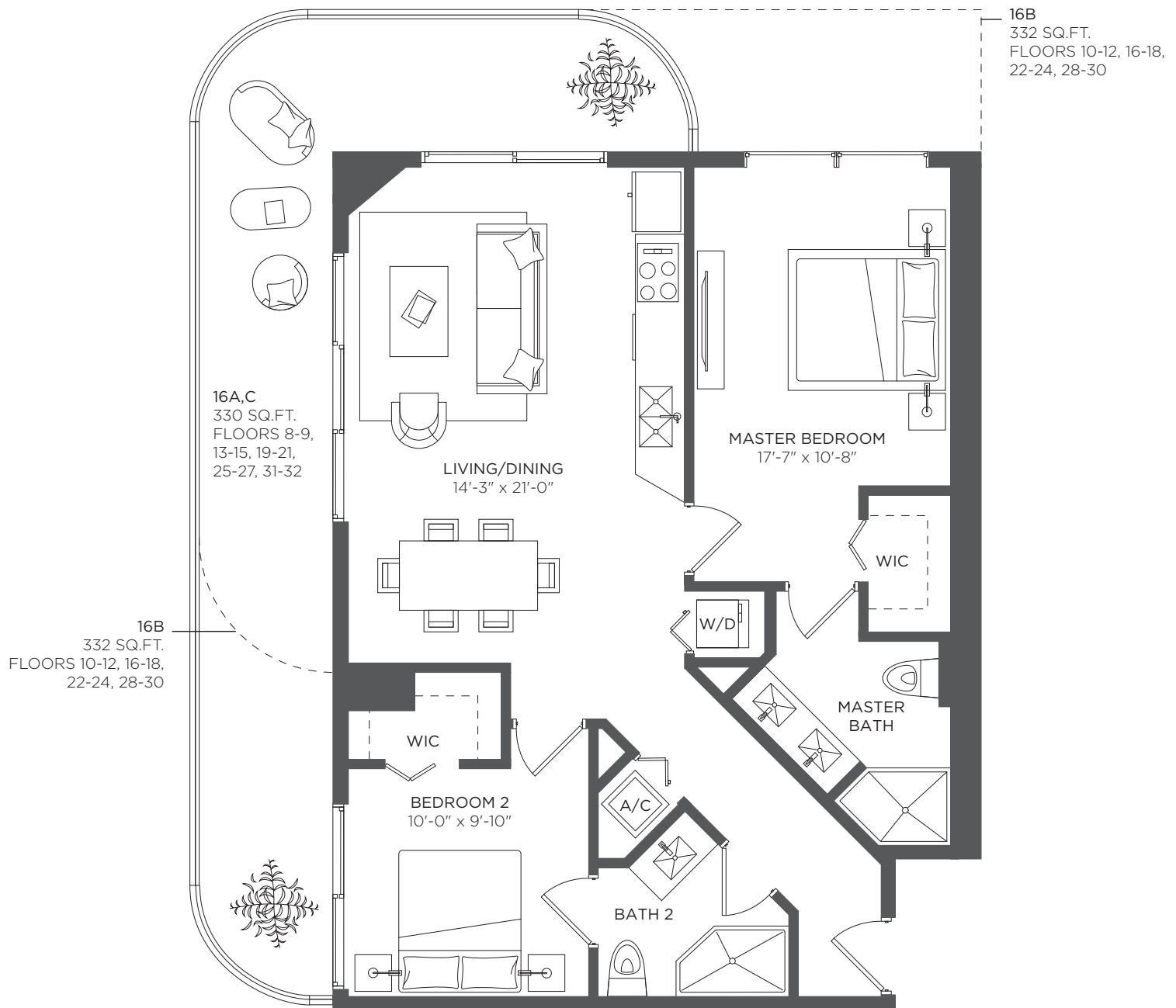
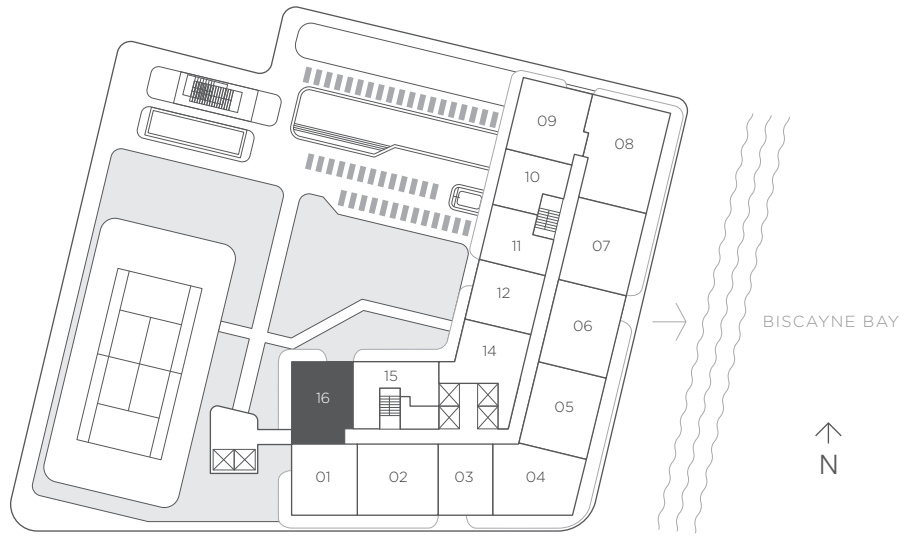
## 2 Bedrooms 2 Baths

**A/C INTERIOR AREA** 982 sq ft / 91.23 sq m

**TERRACE AREA (14A)** 330 sq ft / 30.65 sq m

**TOTAL RESIDENCE** 1,322 sq ft / 121.88 sq m

FLOORS 8 - 32



# STUDIO

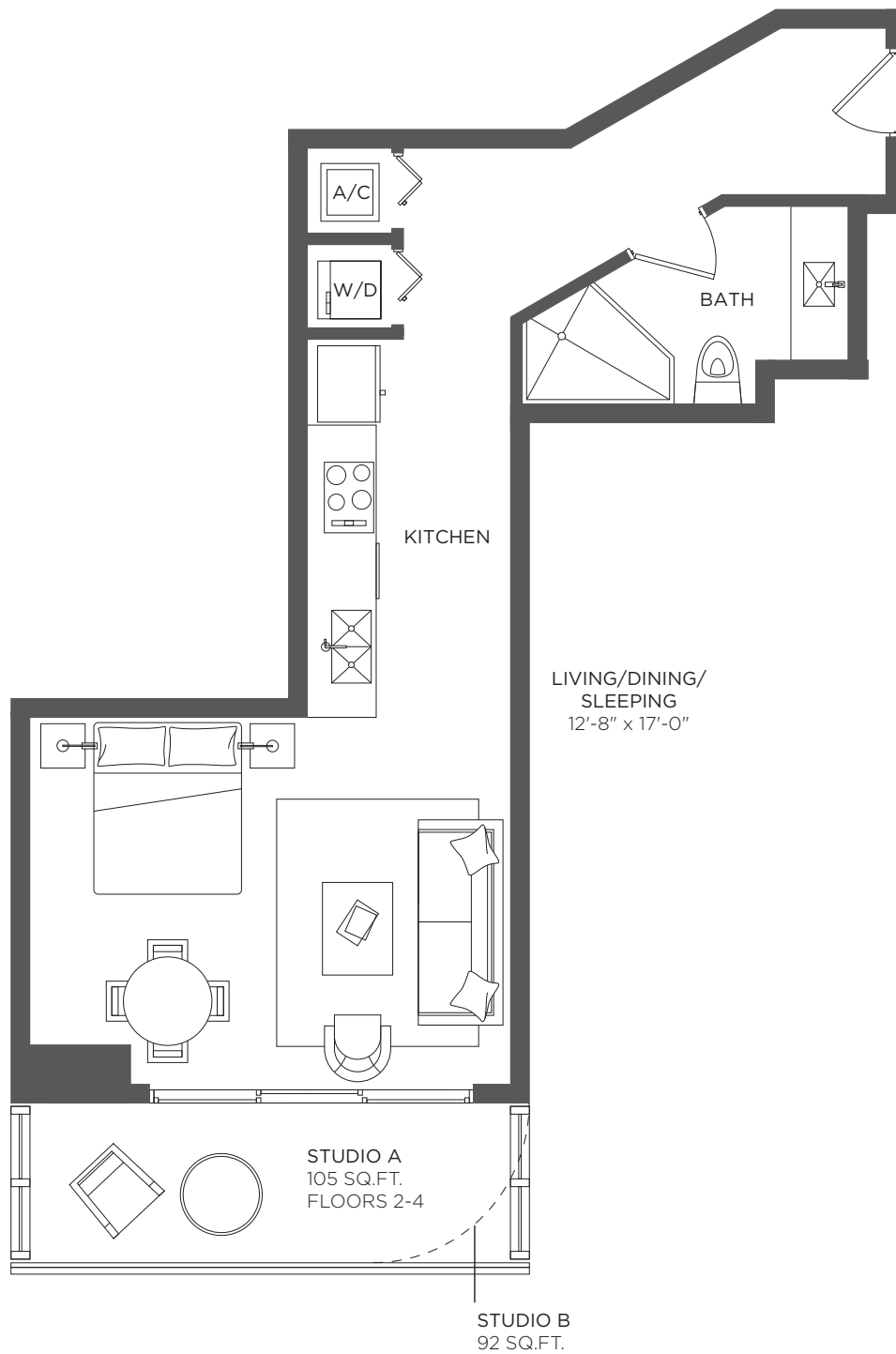
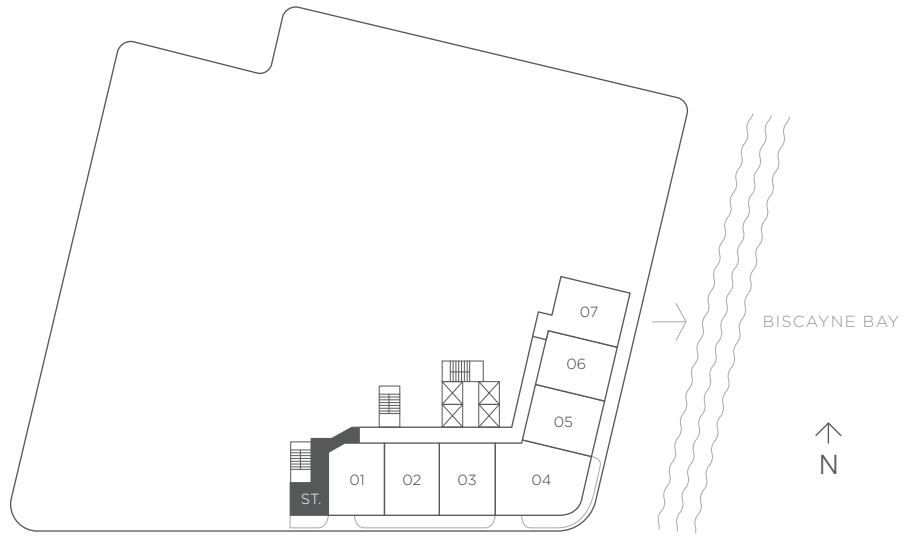
## Studio

A/C INTERIOR AREA 556 sq ft / 51.67 sq m

TERRACE AREA 105 sq ft / 9.75 sq m

TOTAL RESIDENCE 661 sq ft / 61.42 sq m

FLOORS 2 - 6



Each purchaser is advised that there are various methods for calculating the square footage of a Unit, and that depending on the method of calculation, the quoted square footage of a Unit in advertising materials may vary from the square footage of a Unit as stated or described in the Prospectus and the Declaration. The dimensions of the Unit shown in these floor plans have been calculated from the exterior boundaries of the exterior walls to the centerline of interior demising walls, including common elements such as structural walls and other interior structural components of the building and in fact vary from the dimensions that would be determined by using the description and definition of the "Unit" set forth in the Prospectus and the Declaration. For your reference, the area of the Unit, determined in accordance with Unit boundaries as defined in the Prospectus and the Declaration is less than the square footage reflected here. The configuration and use of space or the floor plan design may vary from that in the Prospectus and Declaration because the Developer has reserved the right in the Prospectus to make design, dimension, specification, and plan changes at any time, in the Developer's discretion, without notice to Unit buyers. Note that measurements of rooms set forth on this floor plan are generally taken at the greatest points of each given room (as if the room were a perfect rectangle), without regard for any cutouts. Accordingly, the area of the actual room will typically be smaller than the product obtained by multiplying the stated length times width. All dimensions are approximate and may vary with actual construction, and all floor plans and development plans are subject to change. The furnishings and décor illustrated are not included with the purchase of the Unit. See Prospectus for additional information regarding what is offered with the Unit and the calculation of Unit square footage and dimensions.