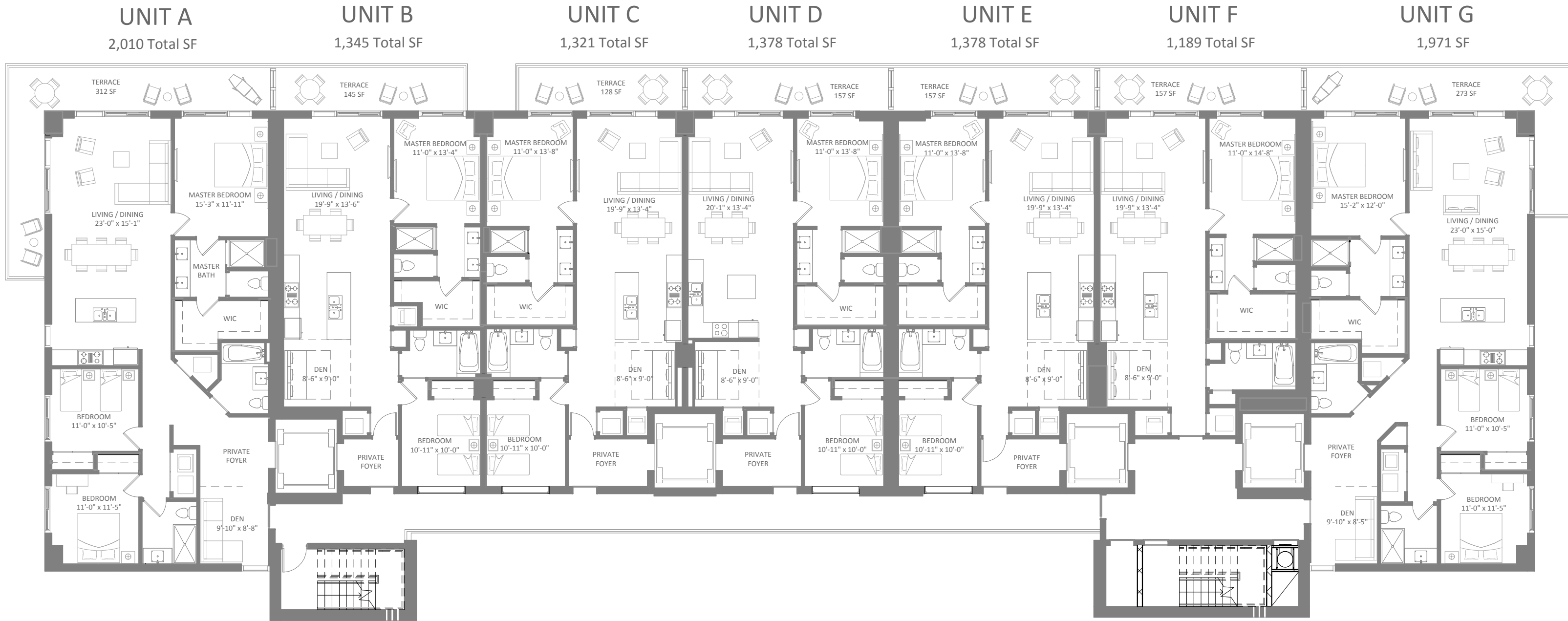


# SOUTH TOWER - OVERALL TYPICAL FLOOR PLAN



Total square footage includes terrace

# THE HARBOUR

## NORTH TOWER - KEY PLAN

### UNIT G

1,971 Total SF

### UNIT F

1,189 Total SF

### UNIT E

1,378 Total SF

### UNIT D

1,378 Total SF

### UNIT C

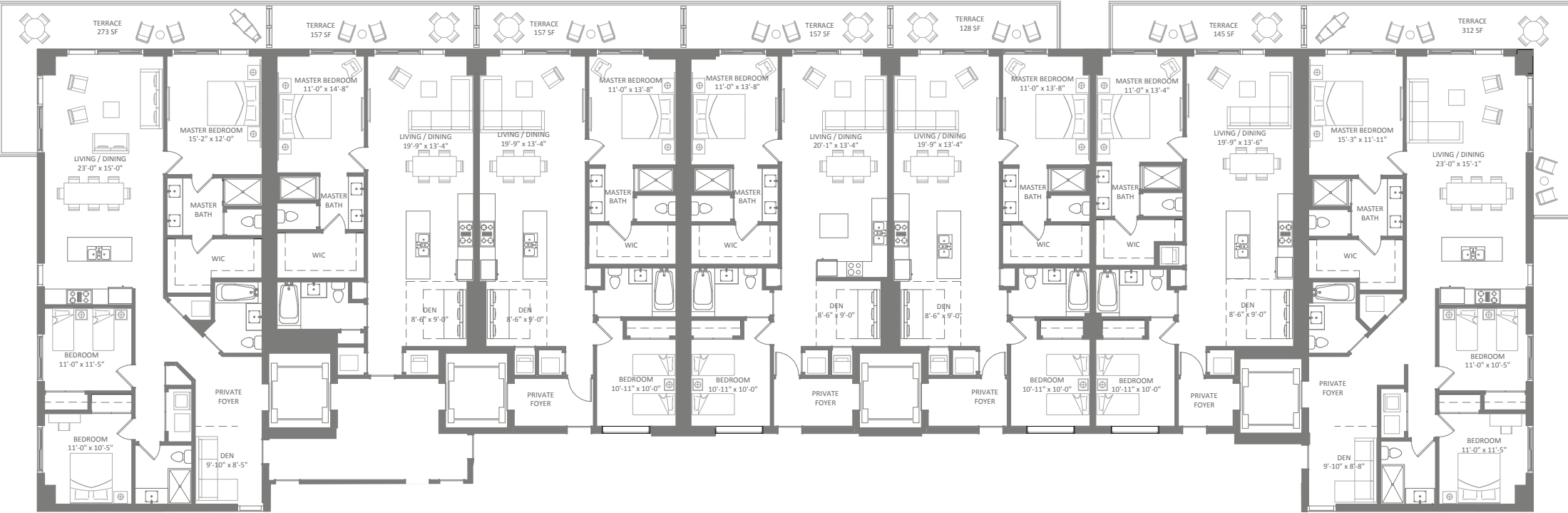
1,321 Total SF

### UNIT B

1,345 Total SF

### UNIT A

2,010 Total SF



Total square footage includes terrace